

Out of use since 1922, the Olympia as she was when the Navy turned her over to the Cruiser Olympia Association. Note the absence of the forward turret and all guns.

Courtesy Cruiser Olympia Assoc.



The U.S.S. Olympia as she appears today.

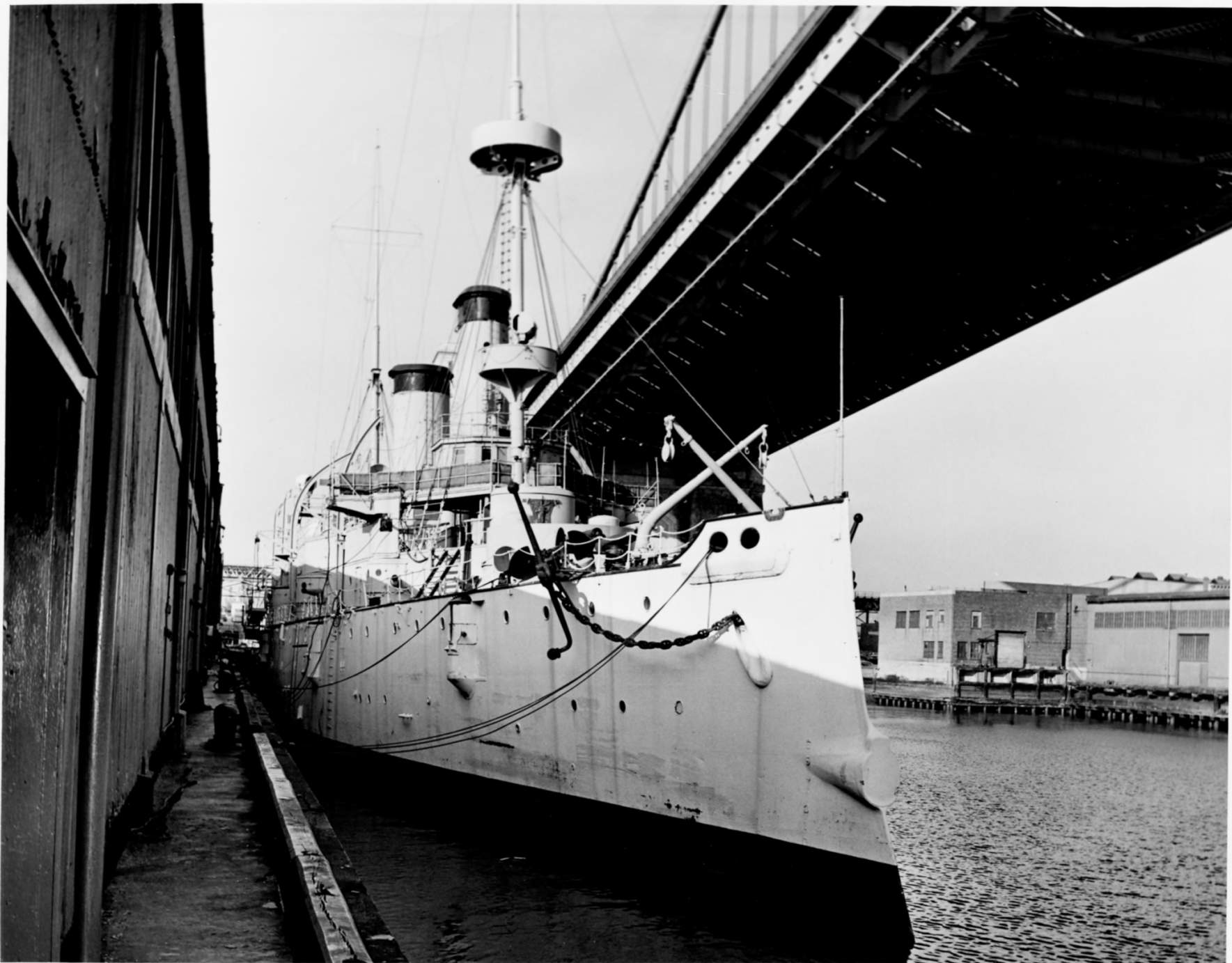
Philadelphia

GY

PA

NPS Photo, 1963

PHOTOGRAPHY
HISTORICAL



UNITED STATES DEPARTMENT OF THE INTERIOR
NATIONAL PARK SERVICE

NATIONAL REGISTER OF HISTORIC PLACES
PROPERTY PHOTOGRAPH FORM

(Type all entries - attach to or enclose with photograph)

STATE

Pennsylvania

COUNTY

Philadelphia

FOR NPS USE ONLY

ENTRY NUMBER

DATE

SEE INSTRUCTIONS

1. NAME

COMMON: U.S.S. Olympia

AND/OR HISTORIC: U.S.S. Olympia

2. LOCATION

STREET AND NUMBER:

Pier 11 North, North Delaware Avenue

CITY OR TOWN:

Philadelphia

STATE:

Pennsylvania

CODE

42

COUNTY:

Philadelphia

CODE

101

3. PHOTO REFERENCE

PHOTO CREDIT: none

DATE OF PHOTO: 1973

NEGATIVE FILED AT:

not registered

4. IDENTIFICATION

DESCRIBE VIEW, DIRECTION, ETC.

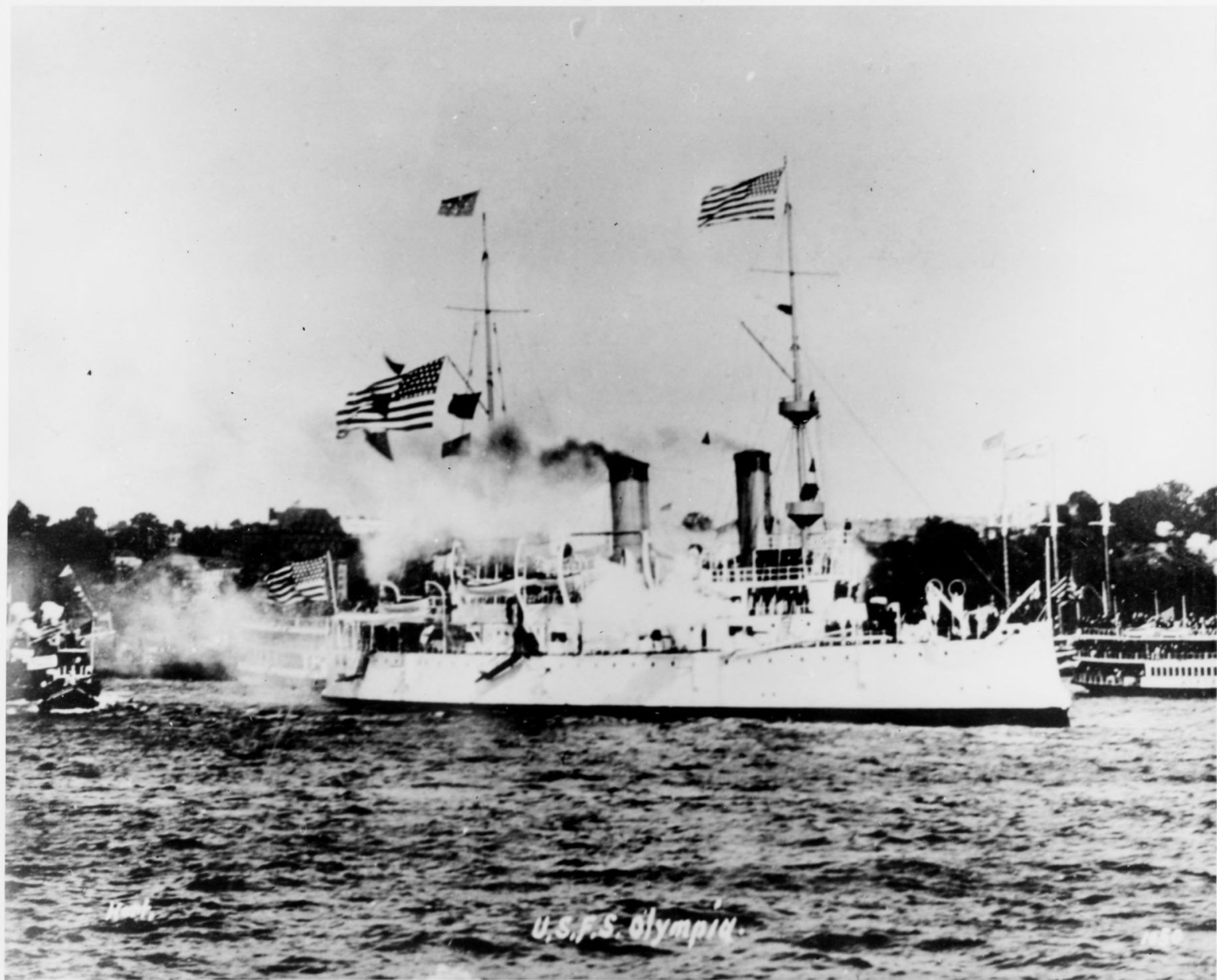
View of the bow, facing aft.



USS OLYMPIA

The U.S.S. Olympia around 1897, somewhat before her immortal role at Manila Bay.

Courtesy Cruiser Olympia Assoc..



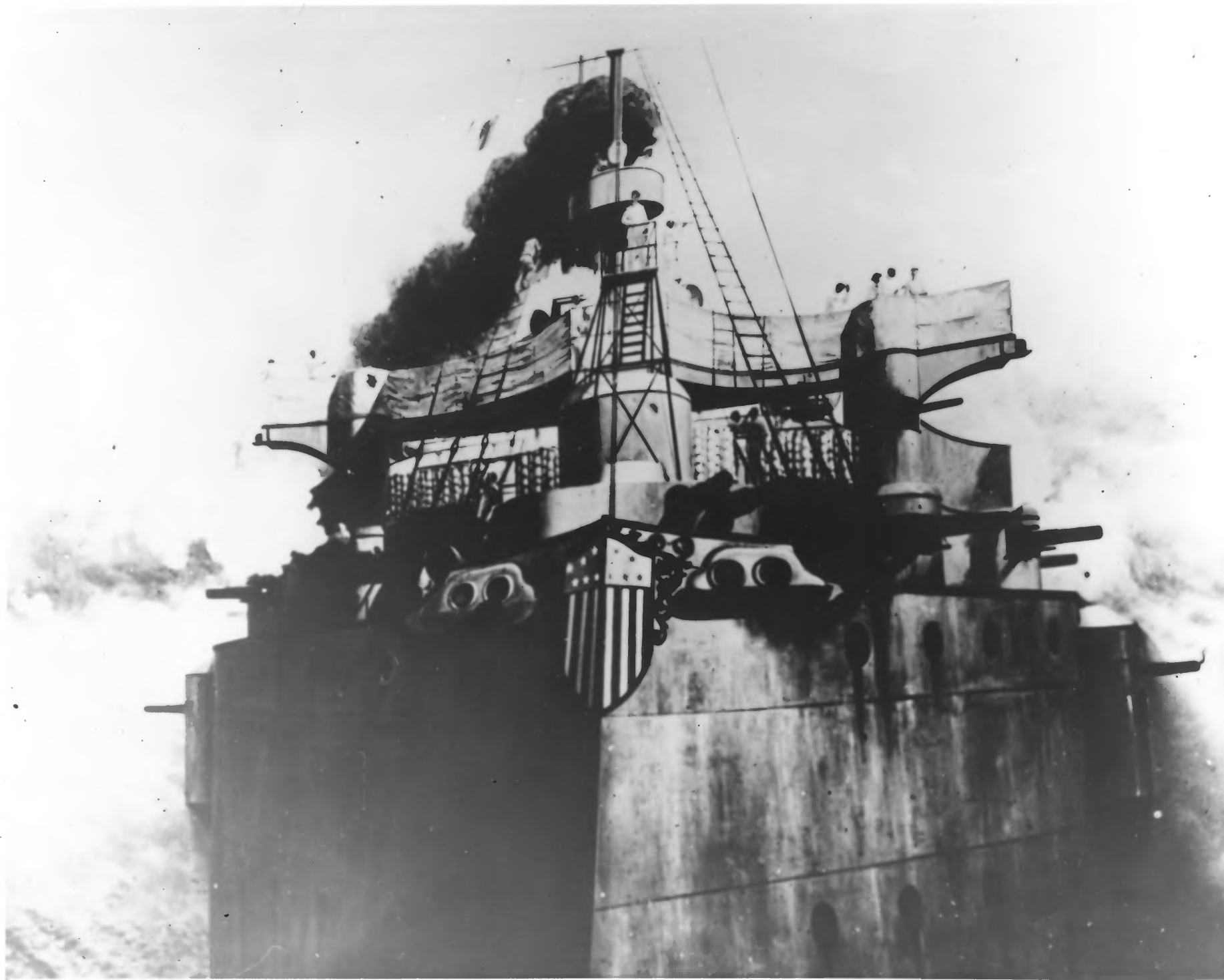
11-11

U.S.F.S. Olympiad

11-11

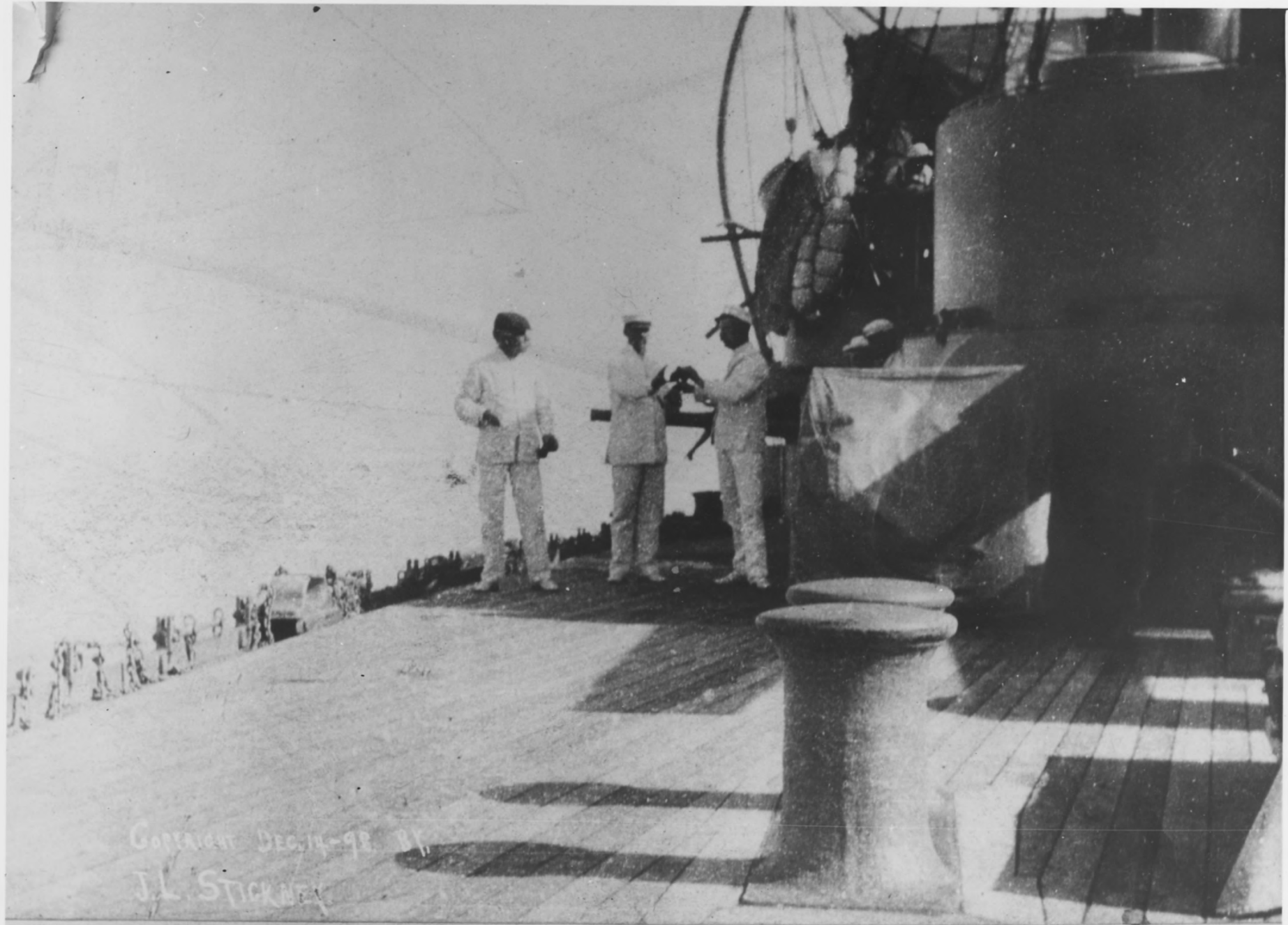
The U.S.S. Olympia, the vessel that led the American fleet to victory in Manila Bay on May 1, 1898, entering New York harbor after returning from the Philippines in 1899. Note Admiral George Dewey's flag atop the rear mast.

Courtesy Cruiser Olympia Assoc.



148
The U. S. S. Olympia in action during the Battle of Manila Bay, May 1, 1898.

Courtesy U. S. Navy



COPYRIGHT DEC. 14-98 P.M.
J.L. STICKNEY

With cordial Holiday greetings.
Christmas, 1898. Joseph L. Stickney.

Comodore George Dewey, wearing his golfer's cap, on the U. S. S. Olympia after the first attack on the Spanish fleet. Captain C. V. Gridley, Commander of the Olympia, is in the center.

Photo by Joseph L. Stickney,
May 1, 1898. Courtesy Cruiser
Olympia Committee