



UNITED STATES DEPARTMENT OF THE INTERIOR
NATIONAL PARK SERVICE

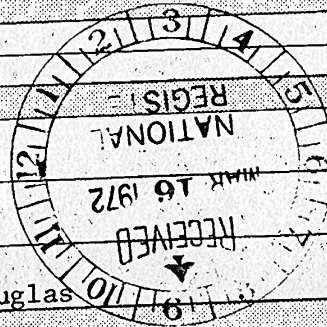
NATIONAL REGISTER OF HISTORIC PLACES
PROPERTY PHOTOGRAPH FORM

(Type all entries - attach to or enclose with photograph)

STATE Nebraska	
COUNTY Douglas	
FOR NPS USE ONLY	
ENTRY NUMBER	DATE
	AUG 25 1972

SEE INSTRUCTIONS

1. NAME			
COMMON:	Joslyn (George A.) Mansion		
AND/OR HISTORIC:			
2. LOCATION			
STREET AND NUMBER: 3902 Davenport Street			
CITY OR TOWN: Omaha			
STATE:	CODE	COUNTY:	CODE
Nebraska	31	Douglas	055
3. PHOTO REFERENCE			
PHOTO CREDIT:	Nebraska State Historical Society		
DATE OF PHOTO:	May 1971		
NEGATIVE FILED AT:	Nebraska State Historical Society 1500 "R" Street, Lincoln, Nebraska		
4. IDENTIFICATION			
DESCRIBE VIEW, DIRECTION, ETC. Joslyn (George A.) Mansion, full south (front) elevation of the main building. View towards the north.			





UNITED STATES DEPARTMENT OF THE INTERIOR
NATIONAL PARK SERVICE

NATIONAL REGISTER OF HISTORIC PLACES

PROPERTY PHOTOGRAPH FORM

(Type all entries - attach to or enclose with photograph)

STATE Nebraska	
COUNTY Douglas	
FOR NPS USE ONLY	
ENTRY NUMBER	DATE
121	AUG 25 1972

SEE INSTRUCTIONS

1. NAME

COMMON: Joslyn (George A.) Mansion

AND/OR HISTORIC:

2. LOCATION

STREET AND NUMBER:

3902 Davenport Street

CITY OR TOWN:

Omaha

STATE:

Nebraska

CODE:

31

COUNTY:

Douglas

CODE

055

3. PHOTO REFERENCE

PHOTO CREDIT: Nebraska State Historical Society

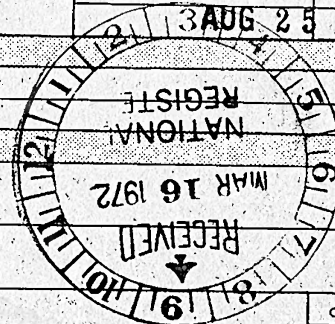
DATE OF PHOTO: May 1971

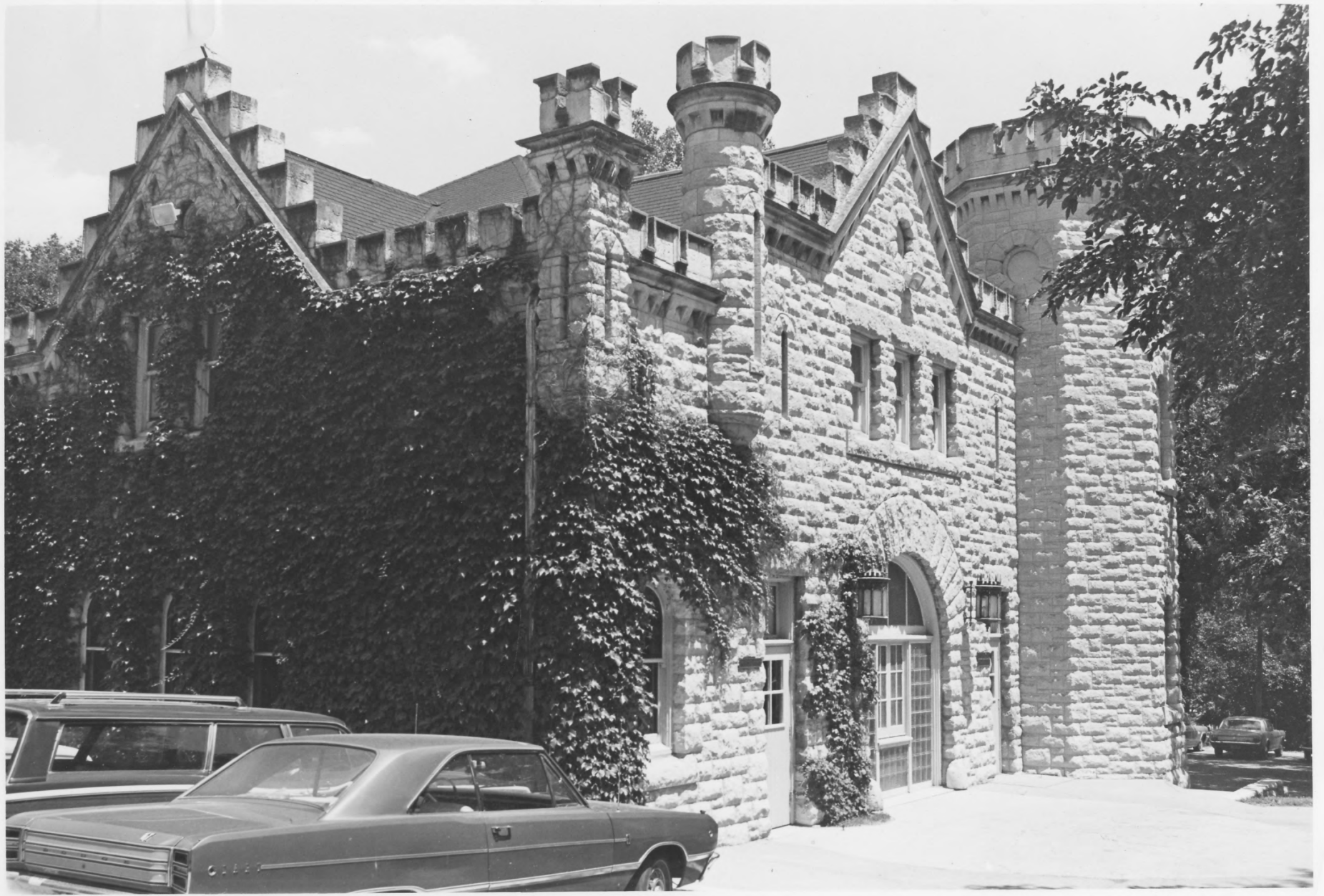
NEGATIVE FILED AT: Nebraska State Historical Society
1500 "R" Street, Lincoln, Nebraska

4. IDENTIFICATION

DESCRIBE VIEW, DIRECTION, ETC.

Joslyn (George A.) Mansion, view of the east (side) elevation of the main building. View towards the west.





UNITED STATES DEPARTMENT OF THE INTERIOR
NATIONAL PARK SERVICE

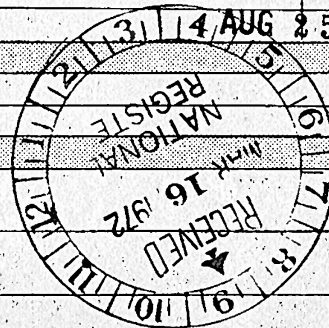
NATIONAL REGISTER OF HISTORIC PLACES
PROPERTY PHOTOGRAPH FORM

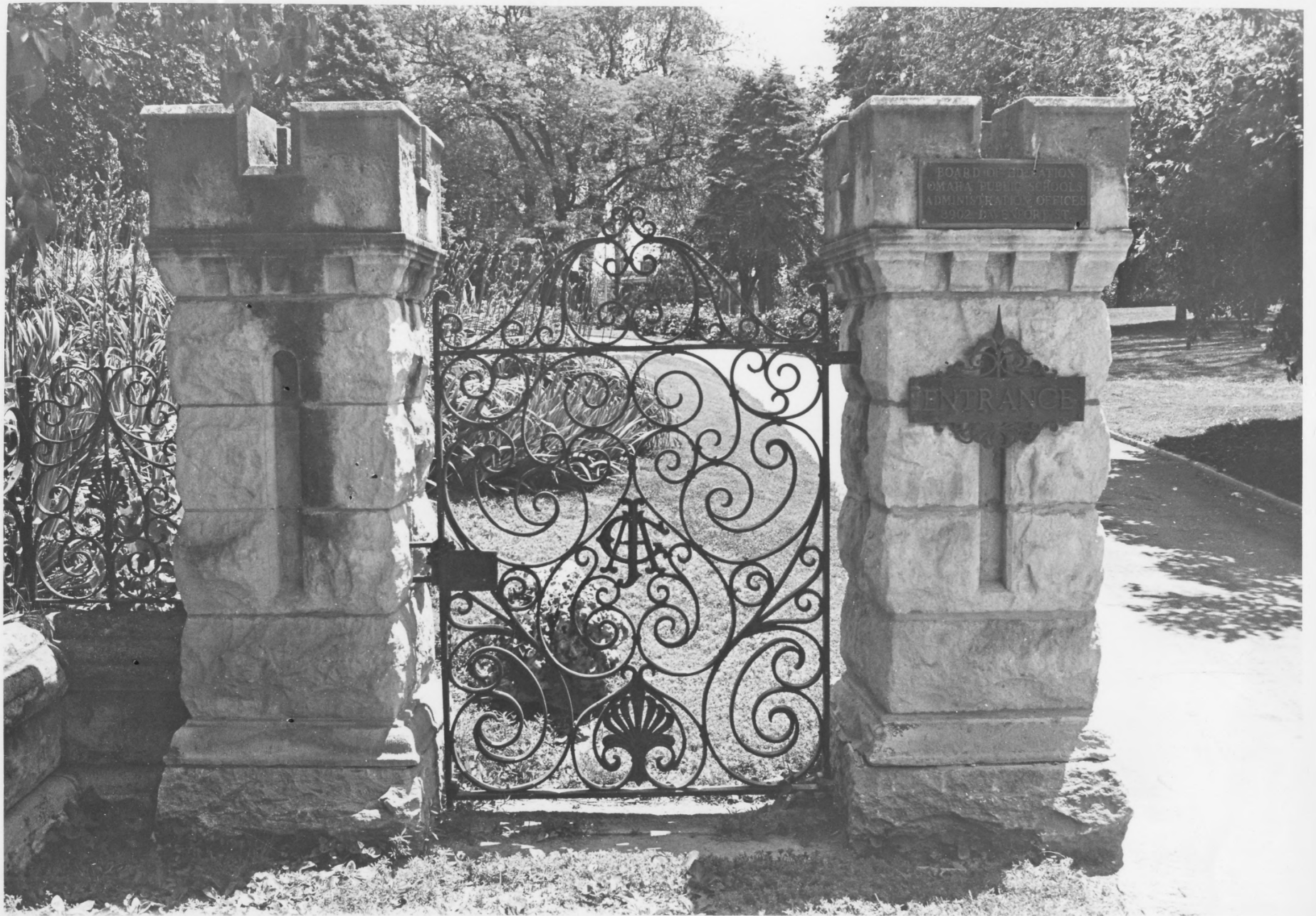
(Type all entries - attach to or enclose with photograph)

STATE Nebraska	
COUNTY Douglas	
FOR NPS USE ONLY	
ENTRY NUMBER	DATE
31	14 AUG 25 1972

SEE INSTRUCTIONS

1. NAME			
COMMON: Joslyn (George A.) Mansion		AND/OR HISTORIC:	
2. LOCATION			
STREET AND NUMBER: 3902 Davenport Street			
CITY OR TOWN: Omaha			
STATE: Nebraska	CODE 31	COUNTY: Douglas	CODE 055
3. PHOTO REFERENCE			
PHOTO CREDIT: Nebraska State Historical Society			
DATE OF PHOTO: May 1971			
NEGATIVE FILED AT: Nebraska State Historical Society 1500 "R" Street, Lincoln, Nebraska			
4. IDENTIFICATION			
DESCRIBE VIEW, DIRECTION, ETC. Joslyn (George A.) Mansion, view of the carriage house north (side) and west (front) elevations. View towards the southeast.			





BOARD OF EDUCATION
OMAHA PUBLIC SCHOOLS
ADMINISTRATIVE OFFICES
2902 DAVIS STREET

ENTRANCE

UNITED STATES DEPARTMENT OF THE INTERIOR
NATIONAL PARK SERVICE

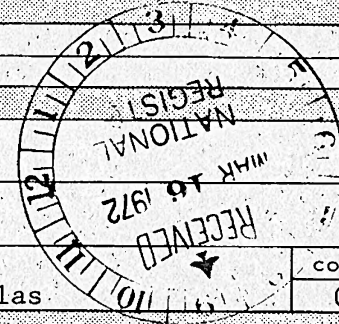
NATIONAL REGISTER OF HISTORIC PLACES
PROPERTY PHOTOGRAPH FORM

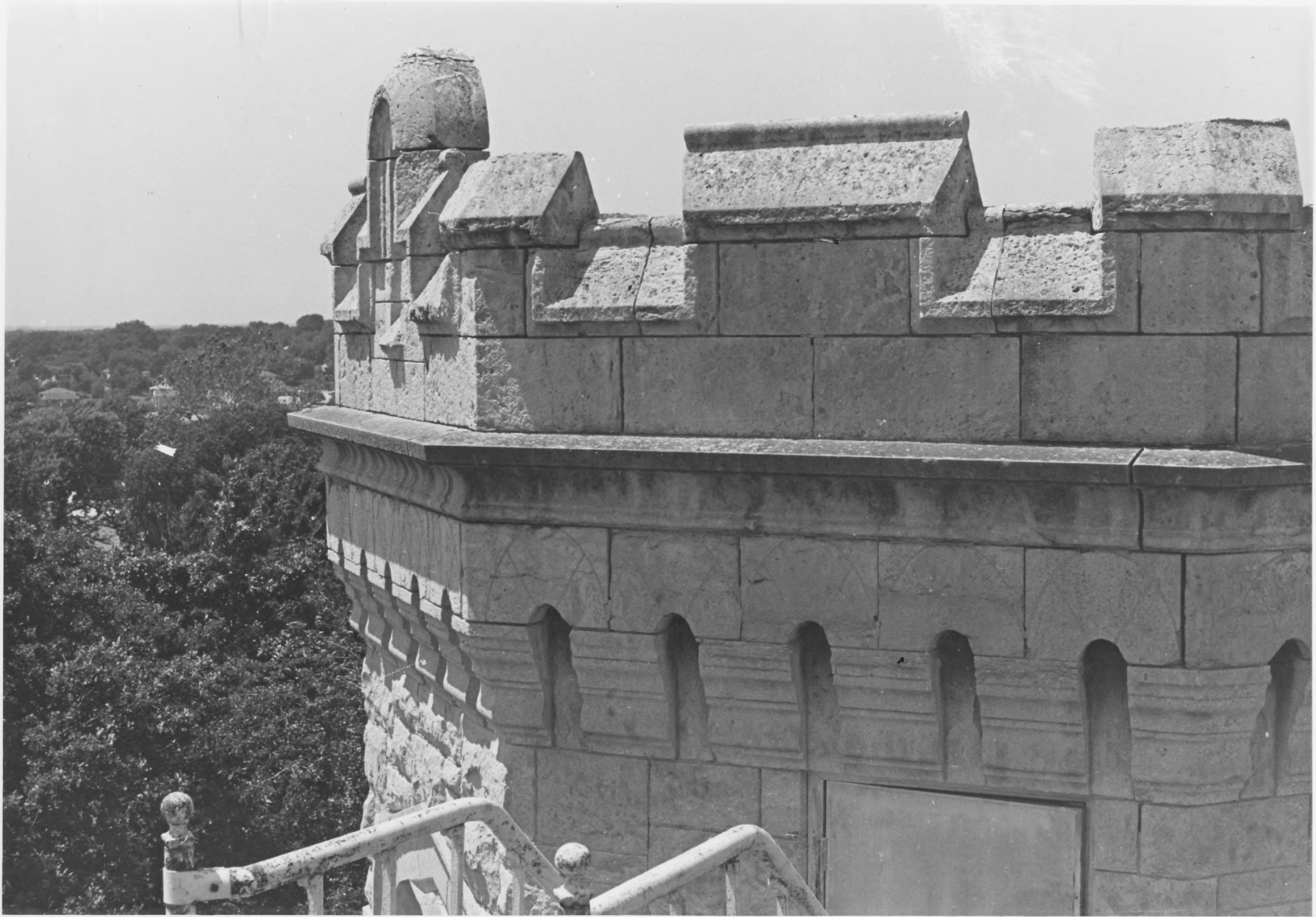
(Type all entries - attach to or enclose with photograph)

STATE Nebraska	
COUNTY Douglas	
FOR NPS USE ONLY	
ENTRY NUMBER	DATE
	AUG 25 1972

SEE INSTRUCTIONS

1. NAME			
COMMON:	Joslyn (George A.) Mansion		
AND/OR HISTORIC:			
2. LOCATION			
STREET AND NUMBER:			
3902 Davenport Street			
CITY OR TOWN:			
Omaha			
STATE:	CODE	COUNTY:	CODE
Nebraska	31	Douglas	055
3. PHOTO REFERENCE			
PHOTO CREDIT:	Nebraska State Historical Society		
DATE OF PHOTO:	May 1971		
NEGATIVE FILED AT:	Nebraska State Historical Society 1500 "R" Street, Lincoln, Nebraska		
4. IDENTIFICATION			
DESCRIBE VIEW, DIRECTION, ETC.			
Joslyn (George A.) Mansion, detail of the side entrance gate. View towards the east.			





UNITED STATES DEPARTMENT OF THE INTERIOR
NATIONAL PARK SERVICE

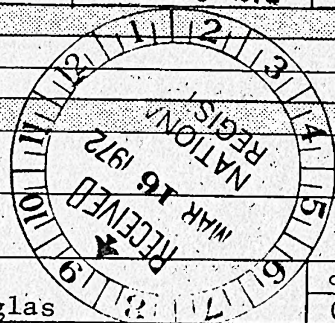
NATIONAL REGISTER OF HISTORIC PLACES
PROPERTY PHOTOGRAPH FORM

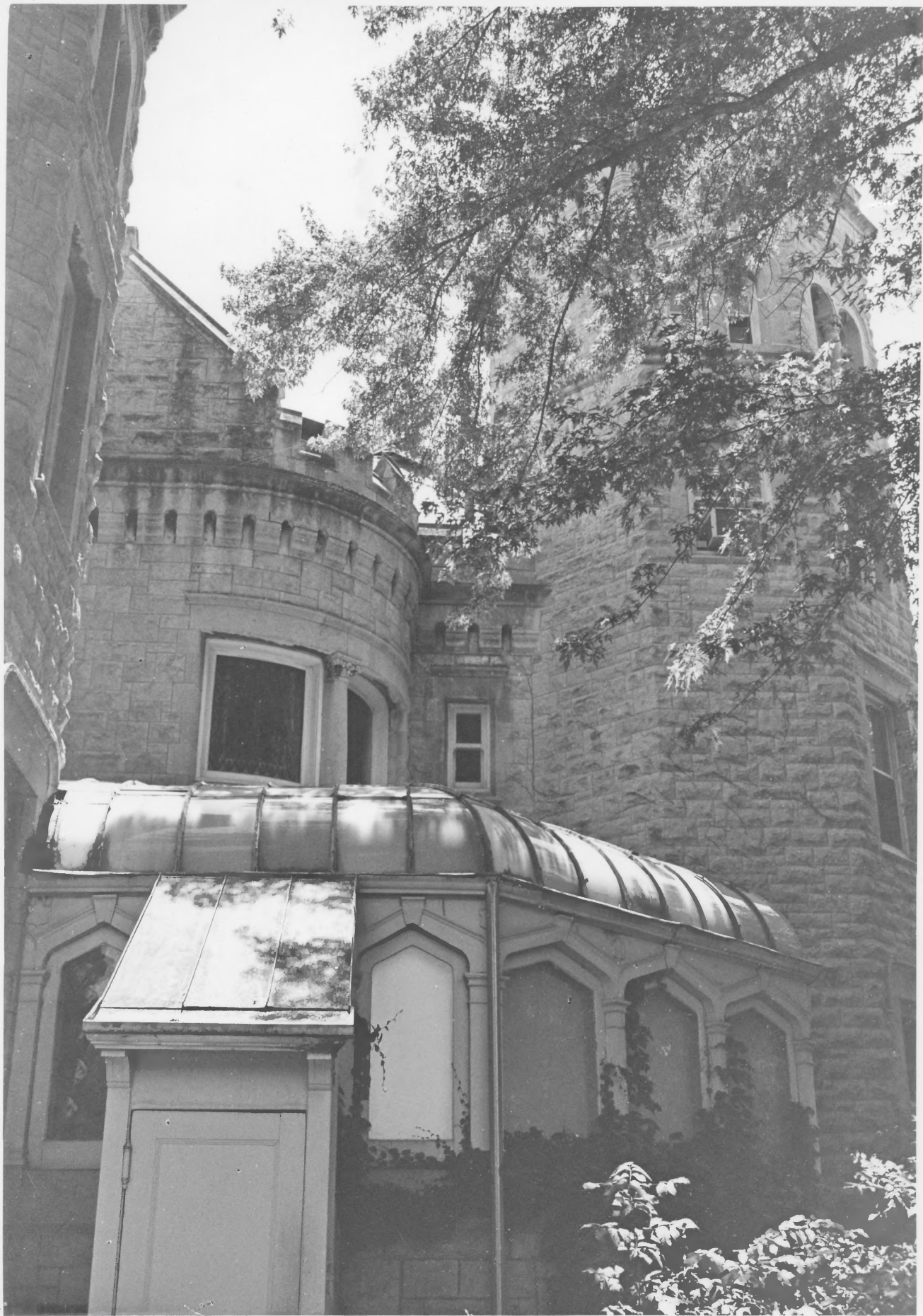
(Type all entries - attach to or enclose with photograph)

STATE Nebraska	
COUNTY Douglas	
FOR NPS USE ONLY	
ENTRY NUMBER AUG 25 1972	DATE

SEE INSTRUCTIONS

1. NAME			
COMMON:		Joslyn (George A.) Mansion	
AND/OR HISTORIC:			
2. LOCATION			
STREET AND NUMBER:			
		3902 Davenport Street	
CITY OR TOWN:			
		Omaha	
STATE:		CODE	COUNTY:
Nebraska		31	Douglas
			CODE 055
3. PHOTO REFERENCE			
PHOTO CREDIT:		Nebraska State Historical Society	
DATE OF PHOTO:		May 1971	
NEGATIVE FILED AT:		Nebraska State Historical Society 1500 "R" Street, Lincoln, Nebraska	
4. IDENTIFICATION			
DESCRIBE VIEW, DIRECTION, ETC.			
<p>Joslyn (George A.) Mansion, detail of the stonework in the southeast turret. View towards the northeast.</p>			





UNITED STATES DEPARTMENT OF THE INTERIOR
NATIONAL PARK SERVICE

**NATIONAL REGISTER OF HISTORIC PLACES
PROPERTY PHOTOGRAPH FORM**

(Type all entries - attach to or enclose with photograph)

STATE Nebraska	
COUNTY Douglas	
FOR NPS USE ONLY	
ENTRY NUMBER	DATE
	AUG 25 1972

SEE INSTRUCTIONS

1. NAME			
COMMON:	Joslyn (George A.) Mansion		
AND/OR HISTORIC:			
2. LOCATION			
STREET AND NUMBER: 3902 Davenport Street			
CITY OR TOWN: Omaha			
STATE:	CODE	COUNTY:	CODE
Nebraska	31	Douglas	055
3. PHOTO REFERENCE			
PHOTO CREDIT:	Nebraska State Historical Society		
DATE OF PHOTO:	May 1971		
NEGATIVE FILED AT:	Nebraska State Historical Society 1500 "R" Street, Lincoln, Nebraska		
4. IDENTIFICATION			
DESCRIBE VIEW, DIRECTION, ETC. Joslyn (George A.) Mansion, partial east (side) elevation of the main building showing the solarium. View towards the west.			

