

373

United States Department of the Interior  
National Park Service



# National Register of Historic Places Registration Form

This form is for use in nominating or requesting determinations for individual properties and districts. See instructions in National Register Bulletin, *How to Complete the National Register of Historic Places Registration Form*. If any item does not apply to the property being documented, enter "N/A" for "not applicable." For functions, architectural classification, materials, and areas of significance, enter only categories and subcategories from the instructions. **Place additional certification comments, entries, and narrative items on continuation sheets if needed (NPS Form 10-900a).**

### 1. Name of Property

historic name Frank Evans High School

other names/site number Spartanburg High School, Frank Evans Junior High School

### 2. Location

street & number 142 S Dean Street

not for publication

city or town Spartanburg

vicinity

state South Carolina code SC county Spartanburg code 083 zip code 29302

### 3. State/Federal Agency Certification

As the designated authority under the National Historic Preservation Act, as amended,

I hereby certify that this x nomination     request for determination of eligibility meets the documentation standards for registering properties in the National Register of Historic Places and meets the procedural and professional requirements set forth in 36 CFR Part 60.

In my opinion, the property x meets     does not meet the National Register Criteria. I recommend that this property be considered significant at the following level(s) of significance:

    national     statewide x local

Elysha M. Johnson 5/3/2012  
Signature of certifying official/Title Date

State or Federal agency/bureau or Tribal Government

In my opinion, the property     meets     does not meet the National Register criteria.

Signature of commenting official Date

Title State or Federal agency/bureau or Tribal Government

### 4. National Park Service Certification

I hereby certify that this property is:

- entered in the National Register  determined eligible for the National Register
- determined not eligible for the National Register  removed from the National Register

    other (explain):    

per Elysha M. Johnson 6-27-12  
Signature of the Keeper Date of Action

**5. Classification**

**Ownership of Property**  
(Check as many boxes as apply.)

- private
- public - Local
- public - State
- public - Federal

**Category of Property**  
(Check only **one** box.)

- building(s)
- district
- site
- structure
- object

**Number of Resources within Property**  
(Do not include previously listed resources in the count.)

Contributing	Noncontributing	
1	0	buildings
0	0	sites
0	0	structures
0	0	objects
1	0	<b>Total</b>

**Name of related multiple property listing**  
(Enter "N/A" if property is not part of a multiple property listing)

N/A

**Number of contributing resources previously listed in the National Register**

0

**6. Function or Use**

**Historic Functions**  
(Enter categories from instructions.)

Education/school  
\_\_\_\_\_  
\_\_\_\_\_  
\_\_\_\_\_  
\_\_\_\_\_  
\_\_\_\_\_  
\_\_\_\_\_

**Current Functions**  
(Enter categories from instructions.)

Vacant/Not In Use  
\_\_\_\_\_  
\_\_\_\_\_  
\_\_\_\_\_  
\_\_\_\_\_  
\_\_\_\_\_  
\_\_\_\_\_

**7. Description**

**Architectural Classification**  
(Enter categories from instructions.)

Late 19<sup>th</sup> and 20<sup>th</sup> Century Revivals:  
Collegiate Gothic  
\_\_\_\_\_  
\_\_\_\_\_  
\_\_\_\_\_  
\_\_\_\_\_

**Materials**  
(Enter categories from instructions.)

foundation: Brick  
walls: Brick  
Stone  
Cast Stone  
Stucco  
roof: Asphalt

---

### **Narrative Description**

(Describe the historic and current physical appearance of the property. Explain contributing and noncontributing resources if necessary. Begin with a **summary paragraph** that briefly describes the general characteristics of the property, such as its location, setting, size, and significant features.)

### **Summary Paragraph**

Completed in 1922, with additions completed in 1925 and 1928, the Frank Evans High School is a three-story masonry building located at 142 South Dean Street, in the heart of downtown Spartanburg, South Carolina. The original building was designed by G. Lloyd Preacher and Company, of Augusta, Georgia. Lockwood, Greene and Company and J. Frank Collins, both of Spartanburg, designed the additions. The school exemplifies the development of education in the city of Spartanburg and is an excellent example of the Collegiate Gothic style of the 1920s.

---

### **Narrative Description**

The east elevation, or the South Dean Street façade, is the original portion of the building built in 1922 as the original entry. The three story façade is seven bays wide with the tower-like center bay containing the main arched opening, inset entry, and decorated surround. The bays on either end contain windows only on the ground floor but contain large solid fields/panels of elaborate diapered brickwork surmounted by large escutcheon on the parapet. The façade is primarily cream-colored pressed brick with granite below the first floor windows, a horizontal granite band at the second floor level, a cast stone belt course at the windowsill on the second and third floor, and a soldier course band above the third floor windows. Buttresses, setback at the corners, separate each bay and a pair flanks the main entrance on either side. The parapet features a small lozenge in the center of each bay and a round cast stone ornament at the top of each buttress. The original wood windows were twelve-over-one in groups of five units but were replaced in the 1981 renovation with fixed aluminum frame windows. Large granite steps lead up to the entry with thin double hung windows on either side of the entry door and arched window at the second level. The steps split north and south halfway down with an ornate terra cotta and stone balustrade. A decorative stone tablet engraved with, "Frank Evans High School" overlays a Gothic blind arch panel or field above the entry door opening. The stone detailing extends to the crenellated parapet above the entry in a pattern similar to Gothic window tracery. The arched window and arched transom window above the door at the entry are original.

The south elevation, or the East Kennedy Street façade, is the portion of the building, or annex, built as an addition in 1925. The intention of maintaining the same character as the original portion of the building, and the details and ornamentation on the façade addition make it virtually indistinguishable from the main building. The façade is thirteen bays wide with the second, seventh, and twelfth bays utilized as entrances to the building. The entrance in the center later became the main entry to the building. Many of the window bays are consistent with the five units originally on the east elevation; however, the window bays on both sides of the central entry and one side of the other entries on the south elevation contained only four units. All three entries on the south elevation have similar, slightly arched openings, decorated surrounds, inset entries, and paired buttresses similar to the original front elevation. The main tower-like entry in the center features a large central oriel window spanning the second and third floors adorned with various decorative carvings and relief panels. The top of the bay window features stone battlements, a quatrefoil in the center, surmounted by a clock face. The side entrances feature similar arched openings and inset entries, but the decorated surround extends to the third floor above which is a stacked brick pattern.

The west elevation, or South Converse Street façade, is also part of the 1925 addition and exhibits many of the same characteristics as the previous elevations. The façade is three bays wide with the third elevation containing a similar diapering brick pattern as the east elevation and no windows on the ground floor. The west elevation for the gymnasium is also visible but setback from the street and indicates the variance between the 1925 addition and the new gymnasium addition in 1928. While similar in character and material, the buttresses are much thinner and the cast stone bands are no longer present. The façade is simply adorned with brick windowsills and a brick soldier course at the upper levels. The windows are typically two-unit window bays varying in height. The stucco addition to the side of the gymnasium and the drop off in front of the gymnasium façade were added during the 1981 renovation.

The north elevation, or the East Broad Street façade, is the result of the 1922 original building, the 1925 addition, the 1928 new gymnasium addition and renovation, and the 1981 drop off and lobby additions and renovation. The first three bays are the end of the original 1922 building with similar character, five unit window bays, and a decorative surround and stone relief at the entry. The recessed portion between the original building and the gymnasium is the north façade of the auditorium. The stucco stair and elevator tower was added during the 1981 renovation, along with the first floor lobby space, and were not a part of the original building. The brick stairwell to the right of the auditorium entry was added during the 1928 gymnasium renovation to connect the lower locker rooms to the upper space. The north elevation of the gymnasium is similar in character to the west elevation but contains only three windows above the second floor. As previously stated, the stucco drop off, first floor lobby, and painted mural were all additions during the 1981 renovations and were not part of the original building.

The building extends for a full block along Kennedy Street and one wing extends for a short distance along Converse Street. It is organized along two double loaded corridors with classrooms and offices on either side on all three floors. Enclosed stairways with large two story windows occur at the two side entrances on the east façade and the entrance on the west façade at the ends of each hallway. The original high school structure, or wing adjacent to Dean Street, contained sixteen classrooms, two large study halls, a gymnasium, an auditorium, a science room and laboratory, and an art department. The second floor was regarded as the main floor with the principal's office located directly inside the Dean Street lobby and the main entrances to the auditorium across the hallway. The two lobby spaces both contain the original plaster moldings above the current dropped ceiling. The original entry lobby contains the original quarry floor and coffered ceiling. Original terrazzo is still present in the hallways but was patched significantly during the 1981 renovation. The existing stairways are original with the exception of the floor covering over the terrazzo.

The central part of the building, connecting to both wings, consists of the supplemental spaces such as the cafeteria, two-story gymnasium, and auditorium, renovated and expanded during the 1928 addition. Accessible from the second and third floor, the gymnasium contains the original wood floors with the "E" logo and eagle in the center. Balconies are suspended from the overall trusses on both sides of the court with a larger elevated seating area at the end of the court. The theatre auditorium is also accessible from the second floor and a balcony from the third floor. At the time of construction, it contained the latest technology often unseen at the time including a moving picture machine and drop curtain for the auditorium. The auditorium seats about 900, with an ample stage area of forty by ninety feet. The stage's proscenium arch is elaborately decorated, engraved surround with a cartouche at the center. The facility stills contains the original wood floor, original light fixtures, and auditorium seats with "EHS" in the seat supports.

**8. Statement of Significance**

**Applicable National Register Criteria**

(Mark "x" in one or more boxes for the criteria qualifying the property for National Register listing.)

- A Property is associated with events that have made a significant contribution to the broad patterns of our history.
- B Property is associated with the lives of persons significant in our past.
- C Property embodies the distinctive characteristics of a type, period, or method of construction or represents the work of a master, or possesses high artistic values, or represents a significant and distinguishable entity whose components lack individual distinction.
- D Property has yielded, or is likely to yield, information important in prehistory or history.

**Criteria Considerations**

(Mark "x" in all the boxes that apply.)

Property is:

- A Owned by a religious institution or used for religious purposes.
- B removed from its original location.
- C a birthplace or grave.
- D a cemetery.
- E a reconstructed building, object, or structure.
- F a commemorative property.
- G less than 50 years old or achieving significance within the past 50 years.

**Areas of Significance**

(Enter categories from instructions.)

Architecture

**Period of Significance**

1922-1928

**Significant Dates**

1922

1925

1928

**Significant Person**

(Complete only if Criterion B is marked above.)

**Cultural Affiliation**

**Architect/Builder**

Preacher, G. Lloyd / Palmer-Spivey Company

Lockwood, Greene and Company / Palmer-Spivey

Construction

Collins, J. Frank / Bryson & Webber

**Period of Significance (justification)**

The period of significance for the Frank Evans High School includes the three building campaigns that occurred: 1922, 1925, and 1928. In spite of the loss of the original windows, and some interior alterations, the building has architectural integrity from these three historic and significant building campaigns.

**Criteria Considerations (explanation, if necessary)**

**Statement of Significance Summary Paragraph** (Provide a summary paragraph that includes level of significance and applicable criteria.)

The Frank Evans High School, located in Spartanburg, South Carolina, is eligible for listing in the National Register of Historic Places under Criterion C for its architecture. Built in the 1920s, the three-story building faces Dean Street and is bordered by Kennedy and Converse Streets. The building is architecturally significant as an excellent example of the Collegiate Gothic Style often characteristic of educational institutions in the early twentieth century. The building is the combined work of two prominent architects and one significant architecture-engineering firm: G. Lloyd Preacher (a South Carolina native working in Georgia); the Boston and Spartanburg firm of Lockwood, Greene and Company; and Spartanburg architect J. Frank Collins.

**Narrative Statement of Significance** (Provide at least one paragraph for each area of significance.)

### *Architecture*

In 1921, architect G. Lloyd Preacher, of G. Lloyd Preacher & Company in Augusta, Georgia, designed the concept for Frank Evans High School and established the master plan for the site chosen to be in the center of the city's population. The original section of the school is an excellent example of Preacher's work. Preacher graduated in 1904 with a degree in engineering and architecture from Clemson College.<sup>1</sup> Preacher's success in Augusta led him to establish an office in Atlanta to develop his southeastern practice. During his career, he designed 417 buildings in seven states, including eighty seven schools between the years 1911 and 1930.<sup>2</sup> The most well known schools include F.L. Stanton Elementary, Capitol View Elementary, Whitefoord Elementary, and Joseph Brown Junior High schools in Atlanta. Other significant projects include Atlanta City Hall and the Carnegie Hall in Atlanta, the Imperial Theatre and Lamar Building in Augusta, and numerous hotels and apartment buildings. In South Carolina, his designs included both the McCormick (1922-23) and Allendale (1921-22) county courthouses, the Fort Sumter Hotel in Charleston (1923), and an Industrial School Building at the John De La Howe School near Willington in McCormick County (1925).

With the intention of developing the best high school in the state,<sup>3</sup> the master plan encompassed the entire block from Converse Street to Dean Street. It was a school for the future, designed to eventually accommodate the children for a city with 50,000 people. Preacher designed the first wing to be built facing Dean Street with the intention that succeeding units would be constructed in a way as not to disturb the first. The result would be a first class campus for education.

For a total cost of \$270,000 for the first phase, the completed building did not disappoint – the *Spartanburg Herald* acclaimed it to be “one of the most handsomest and most complete high school buildings in the South”.<sup>4</sup> Construction was completed by Palmer Spivey Company, of Augusta, Georgia, and the school officially opened on April 11, 1922. The three-story building housed a corridor of classrooms on each floor, an auditorium, and a gymnasium. With the school being

<sup>1</sup> *The Spartanburg Herald* (Spartanburg, S.C.) “Bryson and Webber, With Bid of \$48,307, Are Awarded Gym Contract,” September 20, 1927, 12.

<sup>2</sup> New Georgia Encyclopedia, “G. Lloyd Preacher (1882-1972),” <http://www.georgiaencyclopedia.org/nge/Home.jsp> (accessed September 27, 2011).

<sup>3</sup> *The Spartanburg Herald*, “New High School Plans Accepted,” May 19, 1920, 5.

<sup>4</sup> *The Spartanburg Herald*, “Formal Opening Frank Evans High School Tomorrow,” April 9, 1922, 1.

constructed during the time of segregation, the remainder of the \$300,000 original budget was used to build a ten-room, brick modern school building for the colored children on West Henry Street.

As school enrollment and city population continued to increase, the growth led to the approval for the first addition to Frank Evans High School in August 1924. The prominent Boston architecture and engineering firm of Lockwood, Greene and Company, having recently established a southern headquarters in Spartanburg, secured the addition project. Frank Roberts, architect, and M.E. Sullivan, engineer, attended the initial design presentations.<sup>5</sup> Lockwood, Greene and Company opened an office in Spartanburg in 1923, described as a district headquarters for work in the South.<sup>6</sup> The firm played a key role in the development of the early cotton mill industry in Spartanburg County, dating back to 1882 when Amos Lockwood designed the first Pacolet Mill for Spartan Mills. Due to its proximity to the Southern Railroad, its central location to gray cloth production, and the renewal of old contacts, Spartanburg was a prime location for a new office and thrived on new work. The firm designed the Spartanburg Memorial Auditorium, Cleveland Junior High School, a major extension for Spartanburg County Hospital, and a new dormitory for Converse College.

The classroom addition to the high school was designed by Lockwood, Greene and Company to connect to the south wing of the existing building and extend to the old Converse Street building. The new annex, as the addition would be known, added twenty six rooms and was called to have the same character as the original building.<sup>7</sup> It was constructed for a total cost of approximately \$150,000 and enabled the high school to serve around 2,500 students, more than doubling its previous capacity. The addition opened on September 14, 1925 and housed seventh graders in its first year due to overflow at the grammar schools.<sup>8</sup>

The second addition, the new gymnasium and auditorium renovation, was designed in 1927 by J. Frank Collins and officially opened on September 17, 1928.<sup>9</sup> Collins was one of Spartanburg's leading architects during the first half of the twentieth century and also an established artist. He practiced architecture in Spartanburg between 1910 and 1957 but was known to create other forms of art until his death in 1969. He is known for several prominent houses in Spartanburg's Converse Heights neighborhood (a historic district listed in the National Register in 2007), as well as a number of school and community projects. Also a Freemason in practice, he was commissioned to design the Masonic temple in downtown Spartanburg. Other works include the Duncan Park Stadium, Southside Elementary School, and the Coca-Cola Bottling Company in Spartanburg.

During the new gymnasium and auditorium renovation, a portion of the existing gymnasium was torn down before the addition of seventy feet by 128 feet was added. A choral stage was constructed on the north side of the gymnasium expanding the total seating capacity to 2,400 people. The new ground floor below the main gymnasium included locker rooms, a cafeteria, and an auxiliary gymnasium. Two stairways were also constructed on either side of the auditorium stage to connect

<sup>5</sup> *The Spartanburg Herald*, August 13, 1924.

<sup>6</sup> Samuel Lincoln, *Lockwood Greene: The History of an Engineering Business, 1832-1958* (Brattleboro, Vt.: The Stephen Greene Press, 1960), 456, 477.

<sup>7</sup> *The Spartanburg Herald*, August 13, 1924.

<sup>8</sup> *The Spartanburg Herald*, "School and Colleges of City Make Ready for New Term to Open Next Month," August 20, 1925, 10.

<sup>9</sup> *The Spartanburg Herald*, "Spartanburg Schools Open on Sept. 17; Expect an Increased Enrollment," September 2, 1928, 19.

the locker rooms to the main gymnasium.<sup>10</sup> Bryson and Webber, a local contracting firm, built the addition for approximately \$50,000.<sup>11</sup>

From the original concept by G. Lloyd Preacher, the new high school embodies the principles of the Collegiate Gothic Style, which thrived from 1890 to 1930. The style is based on the forms and details of the Gothic style of the middle ages and greatly inspired by precedents in England. When architects Walter Cope and John Stewardson of Philadelphia were hired to design an entire campus for Bryn Mawr College in 1895, they based their design on the Gothic colleges at Oxford and Cambridge.<sup>12</sup> The Collegiate Gothic style became characterized by Gothic forms and white limestone moldings for entrances, window surrounds, buttress caps, and parapets. The new style quickly spread to numerous colleges in the Northeast and around the country in a national trend that celebrated higher education.

Other examples of local secondary schools and higher education buildings in South Carolina designed in the Collegiate Gothic Style are relatively few in number, some of which have been previously listed in the National Register of Historic Places. A number of educational buildings were designed in the style by architect William Augustus Edwards, a native of South Carolina, including the ca. 1904 Winnie Davis Hall at Limestone College (Gaffney, Cherokee County, listed in 1977), and the 1913 addition to the Withers Building at Winthrop College (Rock Hill, York County, listed in 1981). Other National Register listed examples in South Carolina include the 1925 Woodruff High School by Frank and Joseph Cunningham (Woodruff, Spartanburg County, listed in 2006), the 1927 Wardlaw Junior High School designed by J. B. Urquhart (Columbia, Richland County, listed in 1984) and the 1921 Old Batesburg-Leesville High School by Jesse Wessinger (Leesville, Lexington County, listed in 1982).

---

**Developmental history/additional historic context information** (if appropriate)

Prior to the construction of the current building, Converse Street High School, built in 1897, was located on the portion of the site adjacent to Converse Street. The site was selected in the center of the city's population to best accommodate the new high school. The original school was a six classroom structure with an auditorium and housed ten teachers and less than 200 students. At a time when school attendance was not mandatory, the graduating class in 1901 had eight members.<sup>13</sup>

The late nineteenth century and early twentieth century was a time of expansion and population growth for Spartanburg. In the years between 1890 and 1916, according to U.S. census figures, Spartanburg's population more than tripled, from 3,253 to 11,395. The number of Spartanburg county textile plants grew from eight to more than twenty, most within a ten-mile radius of the city.<sup>14</sup> In 1910, Clinchfield Coal, another major corporation, announced it was relocating its headquarters to Spartanburg. With the growth of the city came significant growth in the school system. It was envisioned that a new high school could meet the need for both the population growth and the growth in the education curriculum for the future.

---

<sup>10</sup> *The Spartanburg Herald*, "Award of High School Gymnasium Contract Postponed Until Today," September 16, 1927, 5.

<sup>11</sup> *The Spartanburg Herald*, September 20, 1927.

<sup>12</sup> John Breihan, "Loyola's Collegiate Gothic Architecture," Loyola University, <http://www.loyola.edu/academics/history/architecture/cga.html> (accessed December 27, 2011).

<sup>13</sup> Spartanburg High School Student Handbook (Spartanburg, SC: Spartanburg High School, 1949).

<sup>14</sup> Vernon Foster, ed., *Spartanburg: Facts, Reminiscences, Folklore* (Spartanburg, SC: The Reprint Company, 1998), 299.



The new school was not only a symbol of the superior education in Spartanburg but also a symbol of the work of Frank Evans. Long time superintendent and educator, Frank Evans (1861-1938) was recognized throughout the South as a leader in public education. When he was first called to Spartanburg schools, the town had between 6,000 and 8,000 inhabitants and two school buildings.<sup>15</sup> By the time the new high school opened, the city schools had grown to six buildings and over 100 teachers. With the help of E. S. Tennent, Chairman of the board of trustees, the trustees unanimously made the decision to name the new high school Frank Evans High School building.<sup>16</sup> *The Spartanburg Herald* later named him Spartanburg's "most distinguished citizen" when he passed away.<sup>17</sup>

The curriculum growth and change paralleled the physical growth of the facilities as programs offered increased from two to five from which to choose, with electives in each. Dr. Evans' primary concern was the quality of instruction and the need to ensure buildings, equipment, and supplies were adequate. Dr. Evans changed the name of the school to Spartanburg High School in 1933. By 1939, the high school contained only grades nine through eleven after two new junior high schools were built in the city. The school later expanded to a twelve-grade program with the first graduating class in 1950.

The school was renamed Evans Junior High School in 1959 when the new Spartanburg High School on Dupre Drive was built. The most significant event during the building's tenure as a junior high school was the integration of schools. In the fall of 1966, two black students attended Evans, and by 1970, Evans was totally integrated.<sup>18</sup> The gymnasium also served as the temporary home of the basketball team of the University of South Carolina at Spartanburg. By the fall of 1971, USC–Spartanburg was up to an enrollment of 819 students with a staff of fifty five, including forty six faculty members. While playing at Evans Junior High School, the team introduced new team colors and a new name (the "Rifles") to differentiate themselves from their counterparts on the Columbia campus. The Palmetto Athletic Conference was formed as the basketball team continued to play in the building until the opening of their new facility in 1973.

In the summer of 1978, when the downtown location was no longer desirable for school purposes, Spartanburg County government purchased the building. County council selected the local design firm Westmoreland, McGarity, and Pitts in 1979 to begin preliminary plans to renovate the building. Founded in 1945 as Harold Woodward, Architect, the firm evolved into Westmoreland, McGarity and Pitts, Inc., a well-known local architecture firm. The firm specialized in education and municipal facilities. The firm underwent two mergers with other firms and is now known as McGarity Gilmore Forester | Spiegle.

After several years and a \$2.2 million renovation, including an extensive renovation of the air conditioning and heating systems, the former school building was dedicated as the Spartanburg Human Resource Center. The construction was completed by Sherman Construction Company and primarily included new interior partitions and restrooms. The renovation also included the addition of a drop-off and first floor lobby between the gymnasium and east wing of the annex and the addition of a stair and elevator shaft and second floor entry on the north side of the auditorium connecting to the original 1922 building. After the renovation was completed, the building was to function as a

<sup>15</sup> *The Spartanburg Herald*, "School Trustees Approve Plans for New Addition," August 13, 1924, 5.

<sup>16</sup> *The Spartanburg Herald*, "Frank Evans High School Has Opening," April 11, 1922, 7.

<sup>17</sup> *The Spartanburg Herald*, August 13, 1924.

<sup>18</sup> *The Spartanburg Herald*, August 20, 1925.

service center to house the Department of Social Services, Food Stamps, Senior Citizen Center, United Way, and other related agencies.

At present, the building is vacant and rehabilitation plans are in progress by the owner.

---

### 9. Major Bibliographical References

---

**Bibliography** (Cite the books, articles, and other sources used in preparing this form.)

- Breihan. "Loyola's Collegiate Gothic Architecture" Loyola University, <http://www.loyola.edu/academics/history/architecture/cga.html>, accessed 16 March 2012.
- Foster, Vernon, ed. *Spartanburg: Facts, Reminiscences, Folklore*. Spartanburg, SC: The Reprint Company, 1998.
- "G. Lloyd Preacher (1882-1972)." *New Georgia Encyclopedia*. <http://www.georgiaencyclopedia.org/nge/Home.jsp>, accessed September 27, 2011.
- Lincoln, Samuel. *Lockwood Greene: The History of an Engineering Business, 1832-1958*. Brattleboro, Vermont: The Stephen Greene Press, 1960.
- Spartanburg High School: Student Handbook*. Spartanburg, SC: Spartanburg High School, 1949.
- The Spartanburg Herald*, "Award of High School Gymnasium Contract Postponed Until Today," September 16, 1927, 5.
- The Spartanburg Herald*, "Bryson and Webber, With Bid of \$48,307, Are Awarded Gym Contract," September 20, 1927, 12.
- The Spartanburg Herald*, "Formal Opening Frank Evans High School Tomorrow," April 9, 1922, 1.
- The Spartanburg Herald*, "Frank Evans High School Has Opening," April 11, 1922, 7.
- The Spartanburg Herald*, "New High School Plans Accepted," May 19, 1920, 5.
- The Spartanburg Herald*, "Renovation of Evans May be Done in Phases," December 29, 1977, B1.
- The Spartanburg Herald*, "School and Colleges of City Make Ready for New Term to Open Next Month," August 20, 1925, 10.
- The Spartanburg Herald*, "School Trustees Approve Plans for New Addition," August 13, 1924, 5.
- The Spartanburg Herald*, "Spartanburg's New High School Building," March 9, 1921, 1.
- The Spartanburg Herald*, "Spartanburg Schools Open on Sept. 17; Expect an Increased Enrollment," September 2, 1928, 19.
- The Spartanburg Herald*, "The New High School," March 12, 1922, 4.

**Previous documentation on file (NPS):**

preliminary determination of individual listing (36 CFR 67 has been requested)  
 previously listed in the National Register  
 previously determined eligible by the National Register  
 designated a National Historic Landmark  
 recorded by Historic American Buildings Survey # \_\_\_\_\_  
 recorded by Historic American Engineering Record # \_\_\_\_\_  
 recorded by Historic American Landscape Survey # \_\_\_\_\_

**Primary location of additional data:**

State Historic Preservation Office  
 Other State agency  
 Federal agency  
 Local government  
 University  
 Other  
Name of repository: S.C. Department of Archives & History

Historic Resources Survey Number (if assigned): \_\_\_\_\_

**10. Geographical Data**

**Acreage of Property** 4.59 acres  
(Do not include previously listed resource acreage.)

**UTM References**

(Place additional UTM references on a continuation sheet.)

1	<u>17</u>	<u>415349</u>	<u>3867597</u>	3	<u>          </u>	<u>          </u>	<u>          </u>
	Zone	Easting	Northing		Zone	Easting	Northing
2	<u>          </u>	<u>          </u>	<u>          </u>	4	<u>          </u>	<u>          </u>	<u>          </u>
	Zone	Easting	Northing		Zone	Easting	Northing

**Verbal Boundary Description** (Describe the boundaries of the property.)

The boundary of the Frank Evans High School property is shown as the heavy black line on the attached portion of a Spartanburg County Tax Map, Parcel #7-12-22-004, reproduced at a scale of 1" = 120'. It is bounded on the east by South Dean Street, on the south by East Kennedy Street, on the west by South Converse Street, and on the north by East Broad Street and developed land owned by others.

**Boundary Justification** (Explain why the boundaries were selected.)

The boundary contains the historic Frank Evans High School footprint and its immediate surroundings.

**11. Form Prepared By**

name/title Jill H. Rodgers, Assoc. AIA  
organization McMillan Pazdan Smith Architecture date 2 May 2012  
street & number 127 Dunbar Street telephone (864) 585-5678  
city or town Spartanburg state SC zip code 29306  
e-mail Jill.rodgers@mcmillanpazdansmith.com / dlove@mcmillanpazdansmith.com

---

**Additional Documentation**

---

Submit the following items with the completed form:

- **Maps:** A **USGS map** (7.5 or 15 minute series) indicating the property's location.

A **Sketch map** for historic districts and properties having large acreage or numerous resources. Key all photographs to this map.

- **Continuation Sheets**
- **Additional items:** (Check with the SHPO or FPO for any additional items.)

---

**Photographs:**

---

Submit clear and descriptive photographs. The size of each image must be 1600x1200 pixels at 300 ppi (pixels per inch) or larger. Key all photographs to the sketch map.

The following information is the same for all photographs:

Name of Property: Frank Evans High School

City or Vicinity: Spartanburg

County: Spartanburg State: South Carolina

Photographer: Jill H. Rodgers

Date Photographed: October 2011

Location of Original  
Digital Images:  
McMillan Pazdan Smith Architecture, Spartanburg, South Carolina

Description of Photograph(s) and number:

1. East elevation, looking west
2. Detail of Stone Relief, east elevation entry
3. East elevation, looking northwest
4. South elevation, looking north at center entrance
5. South elevation, looking north at entrance on left
6. South elevation, looking northeast
7. Detail of Side entrance, south elevation
8. Detail of Center entrance, south elevation
9. South elevation, looking northwest
10. West elevation, looking southeast
11. Portion of north elevation and west elevation, looking southeast
12. North elevation, façade detail
13. North elevation, looking south
14. Detail of clock above center entrance, south elevation

15. Detail of diapering pattern in brickwork, east elevation
16. Detail of decorative rosette at entrance, east elevation
17. Detail of oriel window at center entrance, south elevation
18. Proscenium arch and stage in auditorium, looking from balcony
19. Auditorium seating and balcony, looking from stage
20. Detail of row of seats in auditorium
21. Original ceiling light fixture in auditorium
22. Detail of decoration on proscenium arch, auditorium
23. Decorative column capital (Corinthian style), interior
24. Gymnasium interior
25. Gymnasium interior, bleachers at end of basketball court
26. Typical interior stairwell
27. Lobby at entrance on east elevation
28. Original ceiling details revealed above later dropped ceiling

---

**Property Owner:**

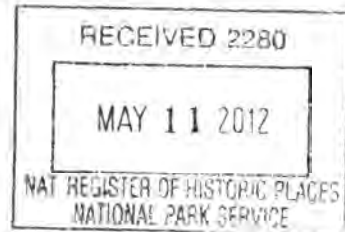
(Complete this item at the request of the SHPO or FPO.)

---

name Spartanburg Community College  
street & number 800 Brisack Road telephone (864) 592-4600  
city or town Spartanburg state SC zip code 29303

**Paperwork Reduction Act Statement:** This information is being collected for applications to the National Register of Historic Places to nominate properties for listing or determine eligibility for listing, to list properties, and to amend existing listings. Response to this request is required to obtain a benefit in accordance with the National Historic Preservation Act, as amended (16 U.S.C. 460 et seq.).

**Estimated Burden Statement:** Public reporting burden for this form is estimated to average 18 hours per response including time for reviewing instructions, gathering and maintaining data, and completing and reviewing the form. Direct comments regarding this burden estimate or any aspect of this form to the Office of Planning and Performance Management, U.S. Dept. of the Interior, 1849 C. Street, NW, Washington, DC.



Friday, 4 May 2012

Ms. Carol Shull  
Interim Keeper, National Register of Historic Places  
U.S. Department of the Interior  
National Park Service  
1201 Eye (I) Street, NW, 8th Floor  
Washington, DC 20005

Dear Ms. Shull:

Here are the National Register nominations for the E.W. Montgomery Warehouse in Greenville County and the Frank Evans High School in Spartanburg County, South Carolina, approved by the South Carolina State Board of Review.

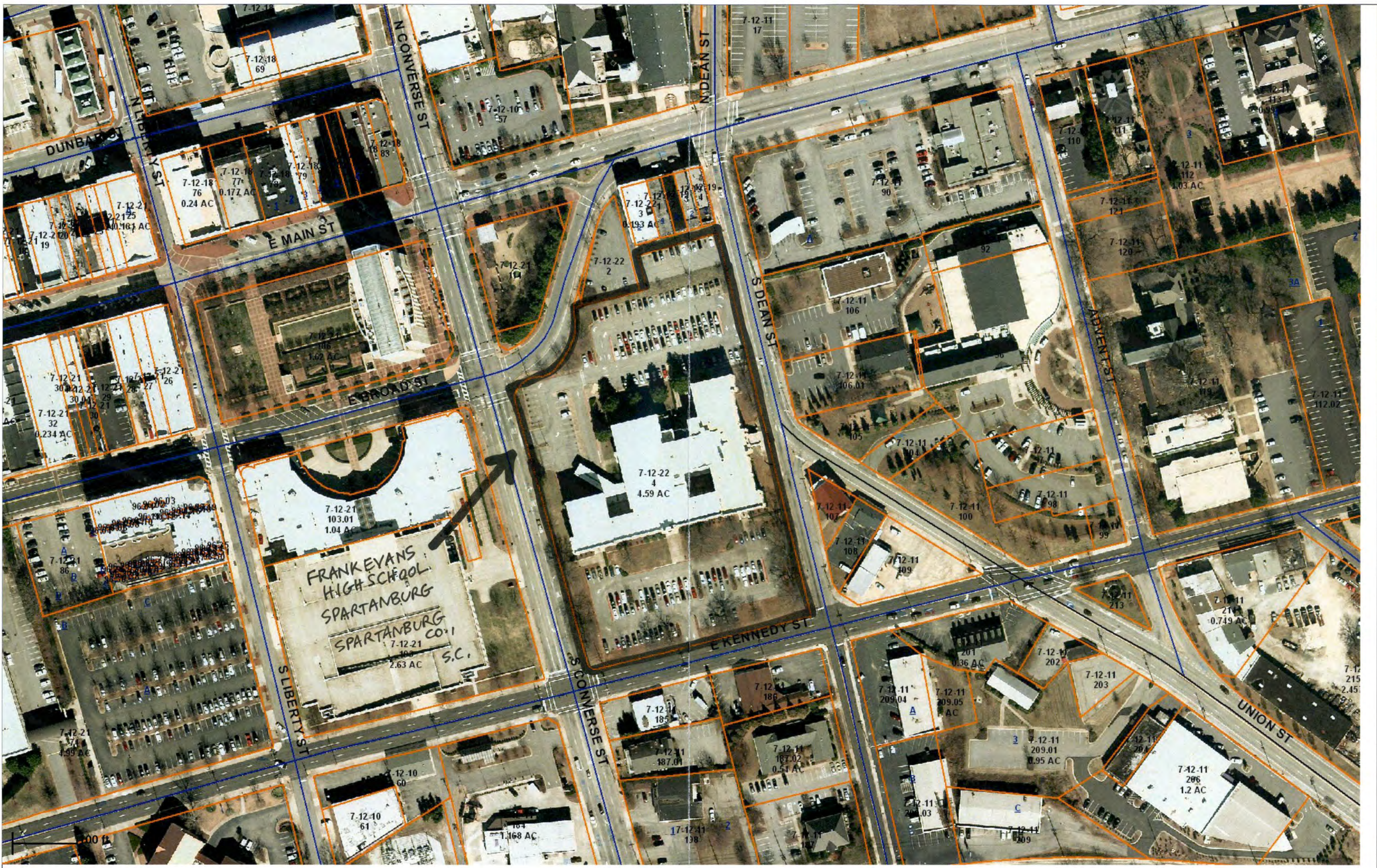
We are now submitting these nominations for formal listing in the Register.

If I may be of further assistance, please do not hesitate to contact me at the address below, call me at (803) 896-6182, fax me at (803) 896-6167, or e-mail me at [power@scdah.state.sc.us](mailto:power@scdah.state.sc.us). I hope to hear from you soon.

Sincerely,

A handwritten signature in black ink, appearing to read "J. Tracy Power".

J. Tracy Power, Ph.D.  
Historian and National Register Co-Coordinator  
State Historic Preservation Office



1" = 120'

Frank Evans High School, Spartanburg, SC

UNITED STATES DEPARTMENT OF THE INTERIOR  
NATIONAL PARK SERVICE

NATIONAL REGISTER OF HISTORIC PLACES  
EVALUATION/RETURN SHEET

REQUESTED ACTION: NOMINATION

PROPERTY NAME: Evans, Frank, High School

MULTIPLE NAME:

STATE & COUNTY: SOUTH CAROLINA, Spartanburg

DATE RECEIVED: 5/11/12      DATE OF PENDING LIST: 6/11/12  
DATE OF 16TH DAY: 6/26/12      DATE OF 45TH DAY: 6/27/12  
DATE OF WEEKLY LIST:

REFERENCE NUMBER: 12000373

REASONS FOR REVIEW:

APPEAL: N    DATA PROBLEM: N    LANDSCAPE: N    LESS THAN 50 YEARS: N  
OTHER: N    PDIL: N    PERIOD: N    PROGRAM UNAPPROVED: N  
REQUEST: N    SAMPLE: N    SLR DRAFT: N    NATIONAL: N

COMMENT WAIVER: N

ACCEPT     RETURN     REJECT    6.27.12 DATE

ABSTRACT/SUMMARY COMMENTS:

**Entered in  
The National Register  
of  
Historic Places**

RECOM./CRITERIA \_\_\_\_\_

REVIEWER \_\_\_\_\_ DISCIPLINE \_\_\_\_\_

TELEPHONE \_\_\_\_\_ DATE \_\_\_\_\_

DOCUMENTATION see attached comments Y/N see attached SLR Y/N

If a nomination is returned to the nominating authority, the nomination is no longer under consideration by the NPS.





1. Frank Evans High School  
142 S. Dean Street, Spartanburg  
Spartanburg County, South Carolina

East elevation, looking west



2. Frank Evans High School  
142 S. Dean Street, Spartanburg  
Spartanburg County, South Carolina

Detail of stone relief, east elevation entry



3. Frank Evans High School  
142 S. Dean Street, Spartanburg  
Spartanburg County, South Carolina

East elevation, looking northwest



4. Frank Evans High School  
142 S. Dean Street, Spartanburg  
Spartanburg County, South Carolina

South elevation, looking north at center entrance



5. Frank Evans High School  
142 S. Dean Street, Spartanburg  
Spartanburg County, South Carolina

South elevation, looking north at entrance on left



6. Frank Evans High School  
142 S. Dean Street, Spartanburg  
Spartanburg County, South Carolina

South elevation, looking northeast



7.

Frank Evans High School  
142 S. Dean Street, Spartanburg  
Spartanburg County, South Carolina

Detail of side entrance, south elevation



8.

Frank Evans High School  
142 S. Dean Street, Spartanburg  
Spartanburg County, South Carolina

Detail of center entrance, south elevation





9.

Frank Evans High School  
142 S. Dean Street, Spartanburg  
Spartanburg County, South Carolina

South elevation, looking northwest



10. Frank Evans High School  
142 S. Dean Street, Spartanburg  
Spartanburg County, South Carolina

West elevation, looking southeast



11. Frank Evans High School  
142 S. Dean Street, Spartanburg  
Spartanburg County, South Carolina

Portion of north elevation and west elevation, looking southeast



12. Frank Evans High School  
142 S. Dean Street, Spartanburg  
Spartanburg County, South Carolina

North elevation, façade detail



13. Frank Evans High School  
142 S. Dean Street, Spartanburg  
Spartanburg County, South Carolina

North elevation, looking south



13. Frank Evans High School  
142 S. Dean Street, Spartanburg  
Spartanburg County, South Carolina

North elevation, looking south



14. Frank Evans High School  
142 S. Dean Street, Spartanburg  
Spartanburg County, South Carolina

Detail of clock above center entrance, south elevation



15. Frank Evans High School  
142 S. Dean Street, Spartanburg  
Spartanburg County, South Carolina

Detail of diapering pattern in brickwork, east elevation





16. Frank Evans High School  
142 S. Dean Street, Spartanburg  
Spartanburg County, South Carolina

Detail of decorative rosette at entrance, east elevation



17. Frank Evans High School  
142 S. Dean Street, Spartanburg  
Spartanburg County, South Carolina

Detail of oriel window at center entrance, south elevation



18. Frank Evans High School  
142 S. Dean Street, Spartanburg  
Spartanburg County, South Carolina

Proscenium arch and stage in auditorium, looking from balcony



19. Frank Evans High School  
142 S. Dean Street, Spartanburg  
Spartanburg County, South Carolina

Auditorium seating and balcony, looking from stage



20.

Frank Evans High School  
142 S. Dean Street, Spartanburg  
Spartanburg County, South Carolina

Detail of row of seats in auditorium



21. Frank Evans High School  
142 S. Dean Street, Spartanburg  
Spartanburg County, South Carolina

Original ceiling light fixture in auditorium



22. Frank Evans High School  
142 S. Dean Street, Spartanburg  
Spartanburg County, South Carolina

Detail of decoration on proscenium arch, auditorium



23. Frank Evans High School  
142 S. Dean Street, Spartanburg  
Spartanburg County, South Carolina

Decorative capital on column supporting balcony in auditorium





24. Frank Evans High School  
142 S. Dean Street, Spartanburg  
Spartanburg County, South Carolina

Gymnasium interior



25. Frank Evans High School  
142 S. Dean Street, Spartanburg  
Spartanburg County, South Carolina

Gymnasium interior, bleachers at end of basketball court



26.

Frank Evans High School  
142 S. Dean Street, Spartanburg  
Spartanburg County, South Carolina

Typical interior stairwell



27. Frank Evans High School  
142 S. Dean Street, Spartanburg  
Spartanburg County, South Carolina

Lobby at entrance on east elevation



28. Frank Evans High School  
142 S. Dean Street, Spartanburg  
Spartanburg County, South Carolina

Original ceiling details revealed above later dropped ceiling



FRANK EVANS  
HIGH SCHOOL  
SPARTANBURG,  
S.C.  
UTM REFERENCE  
17J 415349/386797

PRODUCED BY THE UNITED STATES GEOLOGICAL SURVEY CONTROL BY USGS, NOS/NOAA, AND SOUTH CAROLINA GEODETIC SURVEY COMPILED FROM AERIAL PHOTOGRAPHS TAKEN 1976 FIELD CHECKED 1977. MAP EDITED 1988 PROJECTION LAMBERT CONFORMAL CONIC GRID: 1000-METER UNIVERSAL TRANSVERSE MERCATOR. ZONE 17 100000-FOOT STATE GRID TICKS SOUTH CAROLINA NORTH ZONE UTM GRID DECLINATION 02° WEST 1983 MAGNETIC NORTH DECLINATION 4° WEST VERTICAL DATUM NATIONAL GEODETIC VERTICAL DATUM OF 1929 HORIZONTAL DATUM 1927 NORTH AMERICAN DATUM To place on the predicted North American Datum of 1983, move the projection lines as shown by dashed corner ticks (10 meters west and 15 meters south) There may be private inholdings within the boundaries of any Federal and State Reservations shown on this map Gray tint indicates area in which selected buildings are shown

**PROVISIONAL MAP**  
Produced from original manuscript drawings. Information shown as of date of field check



SCALE 1:24 000  
CONTOUR INTERVAL 3 METERS  
CONTROL ELEVATIONS SHOWN TO THE NEAREST 0.1 METER  
OTHER ELEVATIONS SHOWN TO THE NEAREST METER  
To convert meters to feet multiply by 3.2808  
To convert feet to meters multiply by .3048

THIS MAP COMPLIES WITH NATIONAL MAP ACCURACY STANDARDS  
FOR SALE BY U. S. GEOLOGICAL SURVEY, RESTON, VIRGINIA 22092

1	2	3	1 Inman
2	3	4	2 Valley Falls
3	4	5	3 Compens
4	5	6	4 Wellford
5	6	7	5 Parcelle
6	7	8	6 Reidville
7	8		7 Moore
8			8 Glenn Springs

ADJOINING 7.5' QUADRANGLE NAMES

CONTOURS AND ELEVATIONS IN METERS  
ROAD LEGEND

Improved Road  
Unimproved Road  
Trail  
Interstate Route U.S. Route State Route

SPARTANBURG, S. C.  
PROVISIONAL EDITION 1983

34081-418-TM-024

