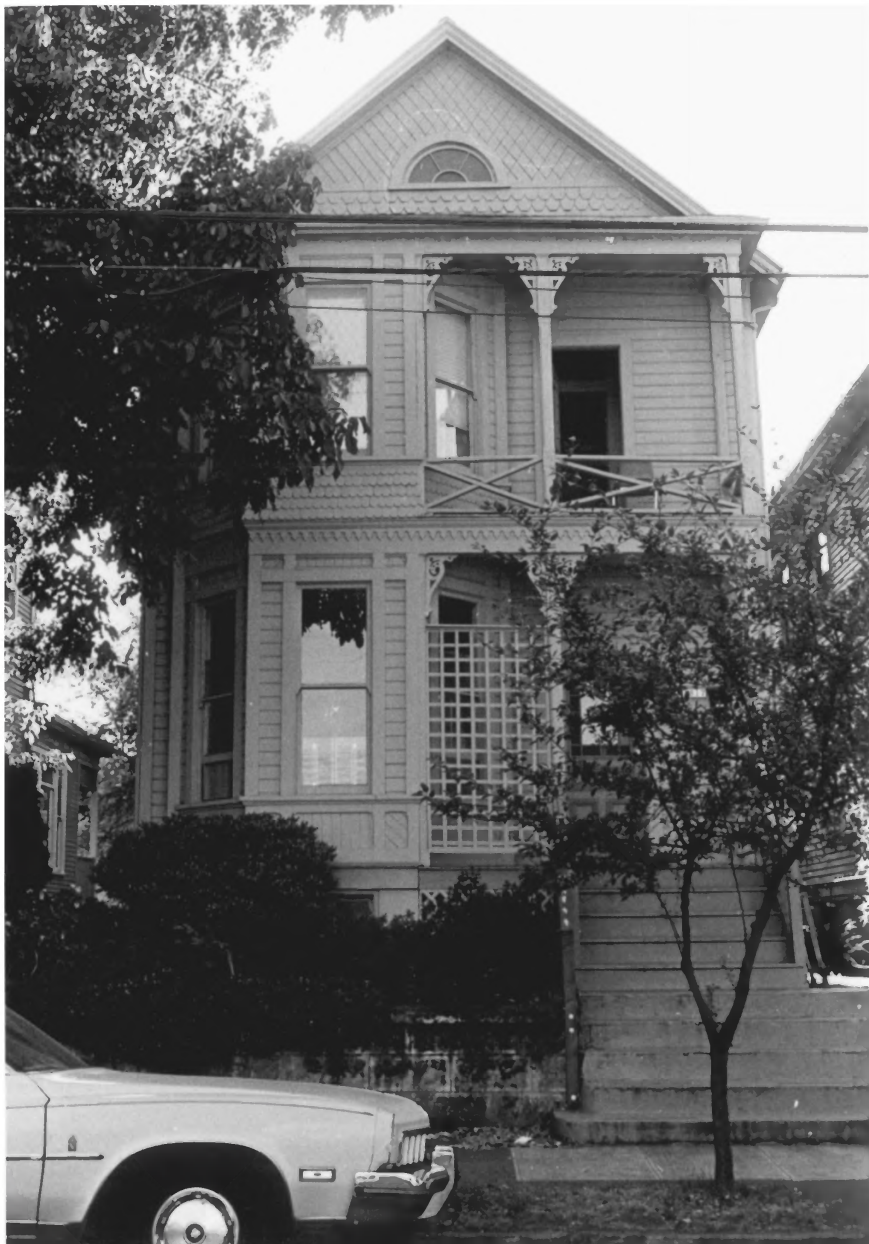




- 1 Bartman, Gustave House / 1817 S.E. 12th
- 2 Portland, Oregon, Multnomah County
- 3 Smith, Patrick
- 4 August 1988
- 5 Roll S-11 # 20
- 6 Looking southwest at east elevation
- 7 # 1 of 2

Portland Eastside MPS



- 1 Bartman, Gustave House / 1817 S.E. 12th
- 2 Portland, Oregon, Multnomah County
- 3 Smith, Patrick
- 4 August 1988
- 5 Roll 5-11 # 22
- 6 Looking west at east elevation.
- 7 # 2 OF 2

Portland Eastside mps