



Hensley Settlement, Willie  
Gibbons Farm, near Cubbage,  
Bell County, Ky.

National Park Service, May 1974  
Cumberland Gap NHP

Photo 2 - View of Woodshed, House,  
and Smokehouse. Facing South.

JAN 8 1980

DEC 9 1976





Willie Gibbons Barn

H-2

Hensley Settlement, Willie Gibbons  
Barn, near Cabbage, Bell County,  
Ky.

National Park Service, May 1974  
Cumberland Gap NHP

Photo 3 - Looking west across main  
part of structure.

JAN 8 1980

DEC 9 1976



H-3

WILLIE GIBBONS GRANARY

Hensley Settlement, Willie  
Gibbons Granary, near Cabbage,  
Bell County, Ky.  
National Park Service, May 1974,  
Cumberland Gap, NHP

Photo 4 - Front view - looking  
generally north

JAN 8 1980

DEC 9 1976







H-4

WILLIE GIBBONS SMOKEHOUSE

Hensley Settlement, Willie  
Gibbons Smokehouse, Near Cabbage,  
Bell County, Ky.

National Park Service, January,  
1974

JAN 8 1980

Cumberland Gap NHP

Photo 5 - Facing front of  
Smokehouse - view generally north.

DEC 9 1976



WILLIE GIBBONS

HENHOUSE

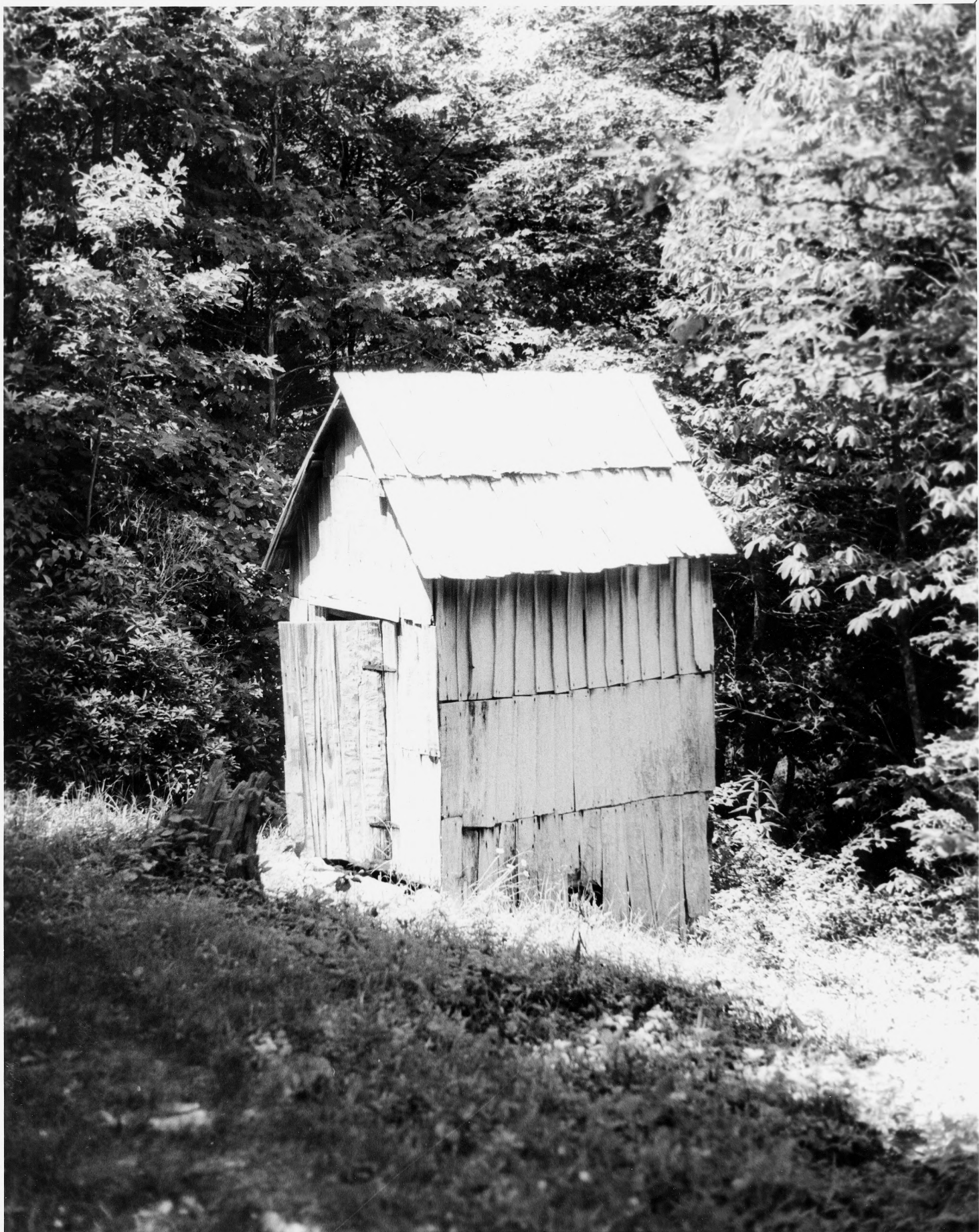
H 5

Hensley Settlement, Willie  
Gibbons Henhouse, near Cabbage,  
Bell County, Ky.  
National Park Service, January,  
1974

Cumberland Gap NHP  
Photo 6 - Looking generally west  
view of building and main door

JAN 8 1980

DEC 9 1976



Hensley Settlement, Willie  
Gibbons Outhouse, near Cubbage,  
Bell County, Ky.

National Park Service, January,  
1974

JAN 8 1980

Cumberland Gap NHP

Photo 7 - Facing generally  
northwest, view of front of  
structure

12/9/76





# H-7

WILLIE GIBBONS

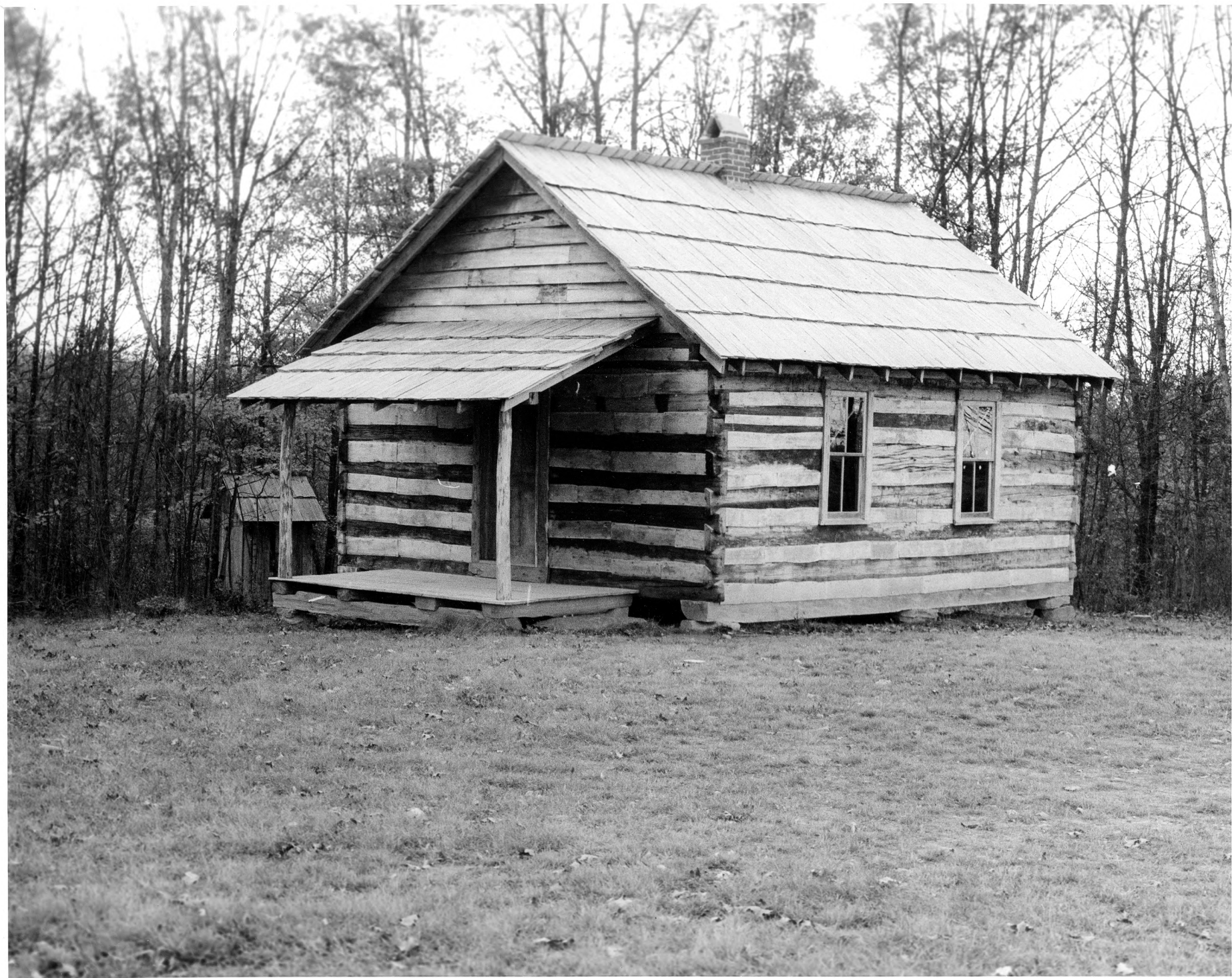
SPRING-HOUSE

Hensley Settlement, Brush  
~~Mountain School House~~, near  
Cabbage, Bell County, Ky.  
National Park Service, May, 1974  
Cumberland Gap NHP

Photo 8 - View of entrance,  
facing generally east.

JAN 8 1980

DEC 9 1976



Hensley Settlement, Brush

Mountain School House, near  
Cubbage, Bell County, Ky.

National Park Service, May 1974

JAN 8 1980

Cumberland Gap NHP

Photo 9 - View of front and side,  
showing porch and front door,  
facing south.

DEC 9 1976







Hensley Settlement, Liege  
Hensley House, near Cabbage,  
Bell County, Ky.  
National Park Service, November,  
1974

JAN 8 1980

Cumberland Gap NHP  
Photo 10 - Front viewing facing  
generally north.

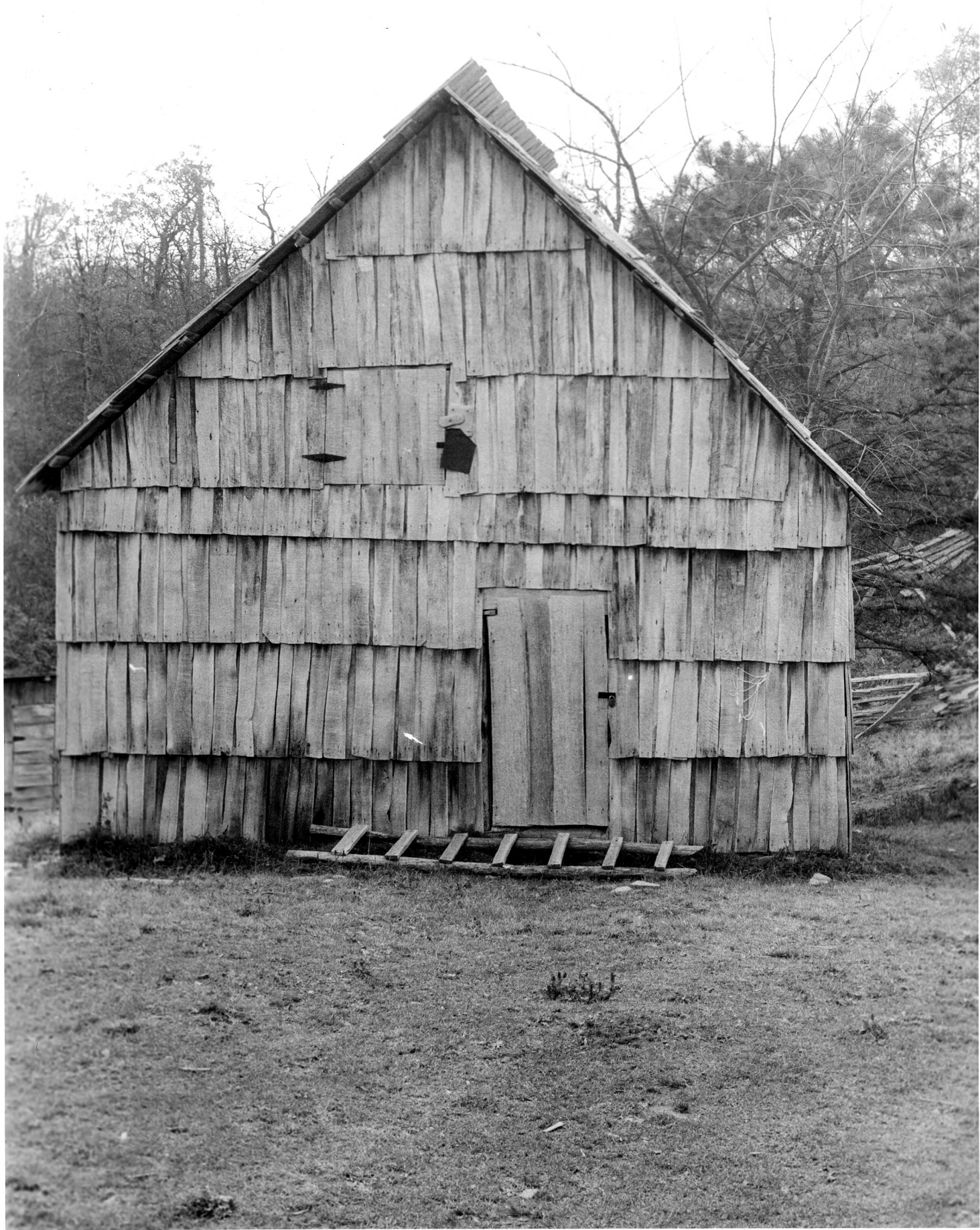
DEC 9 1976



Hensley Settlement, Lige  
Gibbons Farm, near Cabbage,  
Bell County, Ky. JAN 8 1980  
National Park Service, May, 1974

Cumberland Gap NHP  
Photo 11 - View of farmstead,  
showing house, barn, and cornerib,  
facing southeast.

DEC 9 1976



Hensley Settlement, Lige Gibbons  
Barn, near Cabbage, Bell County,  
Ky.

National Park Service, May 1974  
Cumberland Gap NHP JAN 8 1980

Photo 12 - Front view, facing  
southwest

DEC 9 1976





Hensley Settlement, Lige Gibbons  
Hen House, near Cabbage, Bell  
County, Ky.

National Park Service, May, 1974

JAN 8 1980

Cumberland Gap NHP

Photo 13 - Front view, facing  
generally south.

DEC 9 1976



Hensley Settlement, Lige Gibbons  
Corn Crib, near Cabbage, Bell  
County, Ky.

National Park Service, May 1974,

Cumberland Gap NHP

Photo 14 - Front view, facing  
southwest

JAN 8 1980 DEC 9 1976







Hensley Settlement, Lige Gibbons  
Outhouse, near Cabbage, Bell  
County, Ky.

National Park Service, May 1974,

JAN 8 1980

Cumberland Gap NHP

Photo 15 - Front view, facing  
southwest

DEC 9 1976



Hensley Settlement, Sherman  
Hensley House #1, near Cabbage,  
Bell County, Ky.  
National Park Service, November,  
1974

JAN 8 1980

Cumberland Gap NHP  
Photo 16 - View of one corner,  
facing generally north

DEC 9 1976



Hensley Settlement, Sherman  
Hensley House #2, near Cabbage,  
Bell County, Ky.  
National Park Service, November,  
1974

JAN 8 1980

Cumberland Gap NHP  
Photo 17 - Front view, facing  
generally north

DEC 9 1976





Hensley Settlement, Sherman  
Hensley Corn Crib, near Cubbage,  
Bell County, Ky.  
National Park Service, November,  
1974

JAN 8 1980

Cumberland Gap NHP  
Photo 18 - View of broad side,  
facing generally east.

DEC 9 1976



Hensley Settlement, Sherman  
Hensley Hen House, near Cubbage,  
Bell County, Ky.

National Park Service, November,  
1974

JAN 8 1980

Cumberland Gap NHP  
Photo 19 - View of side and front  
end, facing generally east.

DEC 9 1976







Hensley Settlement, Wallace  
Hensley House (H18), near Cabbage,  
Bell County, Ky.

National Park Service, October,  
1975

JAN 8 1980

Cumberland Gap NHP

Photo 20 - View of chimney and  
fallen logs, facing east

DEC 9 1976



Hensley Settlement, Willie  
Gibbons Apple Hole, near Cabbage,  
Bell County, Ky.

National Park Service, November,  
1974

JAN 8 1980

Cumberland Gap NHP  
Photo 21 - View of opening with  
cover raised, facing east

DEC 9 1976



Hensley Settlement, Willie Gibbons  
Hog House, near Cabbage, Bell  
County, Ky.

National Park Service, November,  
1974

JAN 8 1980

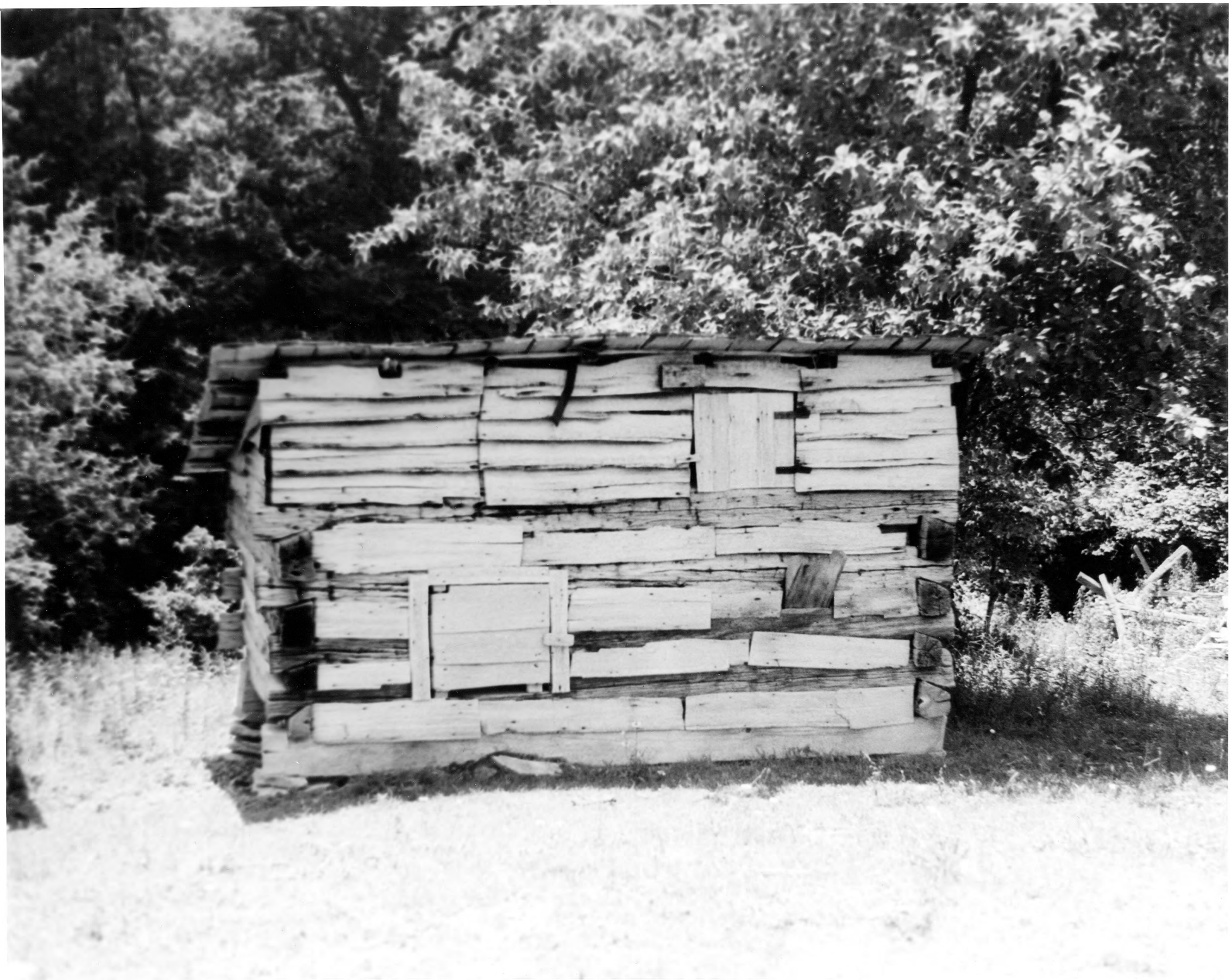
Cumberland Gap NHP

Photo 22 - Front view, facing  
generally east

DEC 9 1976

JAN 8 1980





Hensley Settlement, Lige Gibbons  
Hog Pen, near Cabbage, Bell  
County, Ky.

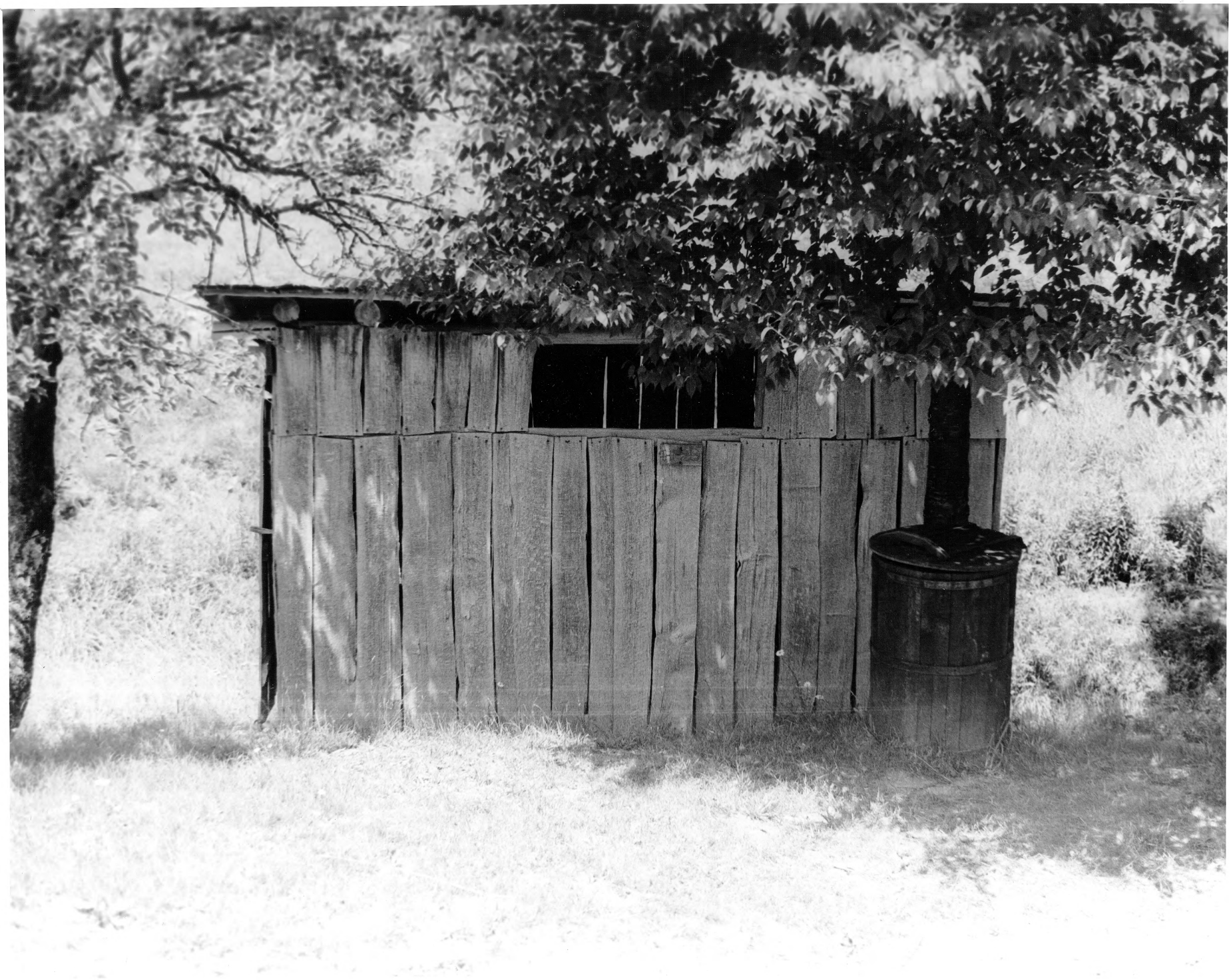
National Park Service, May 1974,

JAN 8 1980

Cumberland Gap NHP

Photo 23 - Front view, facing  
generally south

DEC 9 1976



H-25

WILLIE GIBBONS

WOODSHED

Hensley Settlement, Willie  
Gibbons Woodshed, near Cabbage,  
Bell County, Ky.

JAN 8 1980

National Park Service, May 1974

Cumberland Gap NHP

Photo 24 - Side view, facing  
generally west

DEC 9 1976







Hensley Settlement, Willie Gibbons  
Blacksmith Shop, near Cabbage,  
Bell County, Ky.  
National Park Service, May 1974

JAN 8 1980

Cumberland Gap NHP

Photo 25 - Broadside view  
showing chimney, windows; facing  
generally west

DEC 9 1976



Hensley Settlement, Finley  
Hensley House, near Cabbage,  
Bell County, Ky.

National Park Service, May, 1974

JAN 8 1980

Cumberland Gap NHP DEC 9 1976

Photo 26 - View of broad side  
showing main entrance, facing  
northwest



Hensley Settlement, Hensley Settlement,  
near Cubbage, Bell County,  
Ky.

National Park Service, May, 1974

JAN 8 1980

Cumberland Gap NHP

Photo 27 - View of west end of  
settlement, showing Willie Gibbons  
Sheep Barn, road and fields,  
facing southwest

DEC 9 1976





Hensley Settlement, Willie  
Gibbons Sheep Barn, near Cubbage,  
Bell County, Ky.

National Park Service, May 1974

Cumberland Gap NHP

JAN 8 1980

Photo 28 - End view showing  
door, facing northwest

DEC 9 1976

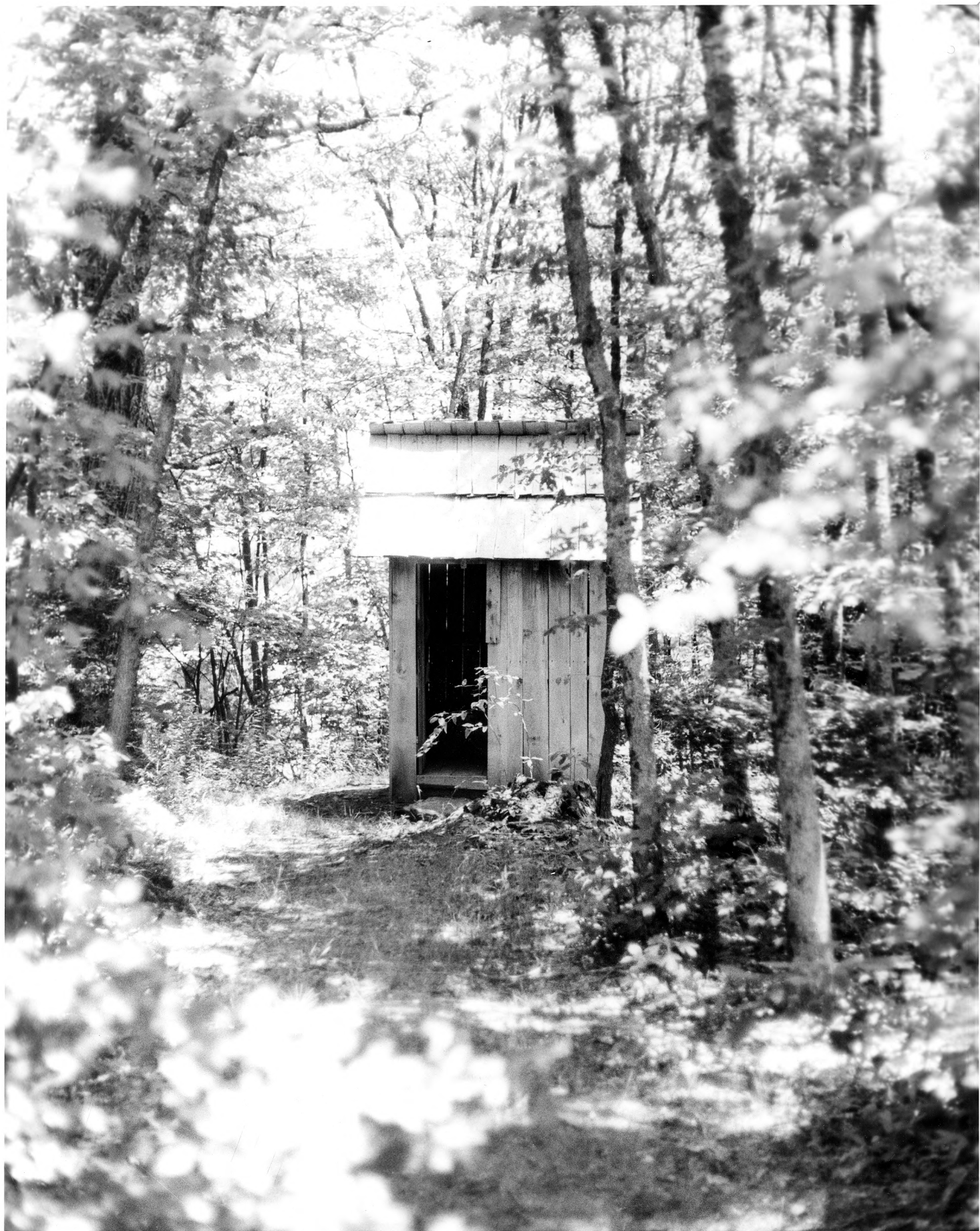


Hensley Settlement, Brush  
Mountain School Outhouse #1,  
near Cubbage, Bell County, Ky.  
National Park Service  
Cumberland Gap NHP

Photo 29 - Front view, facing  
generally south      JAN      8      1980

DEC 9      1976





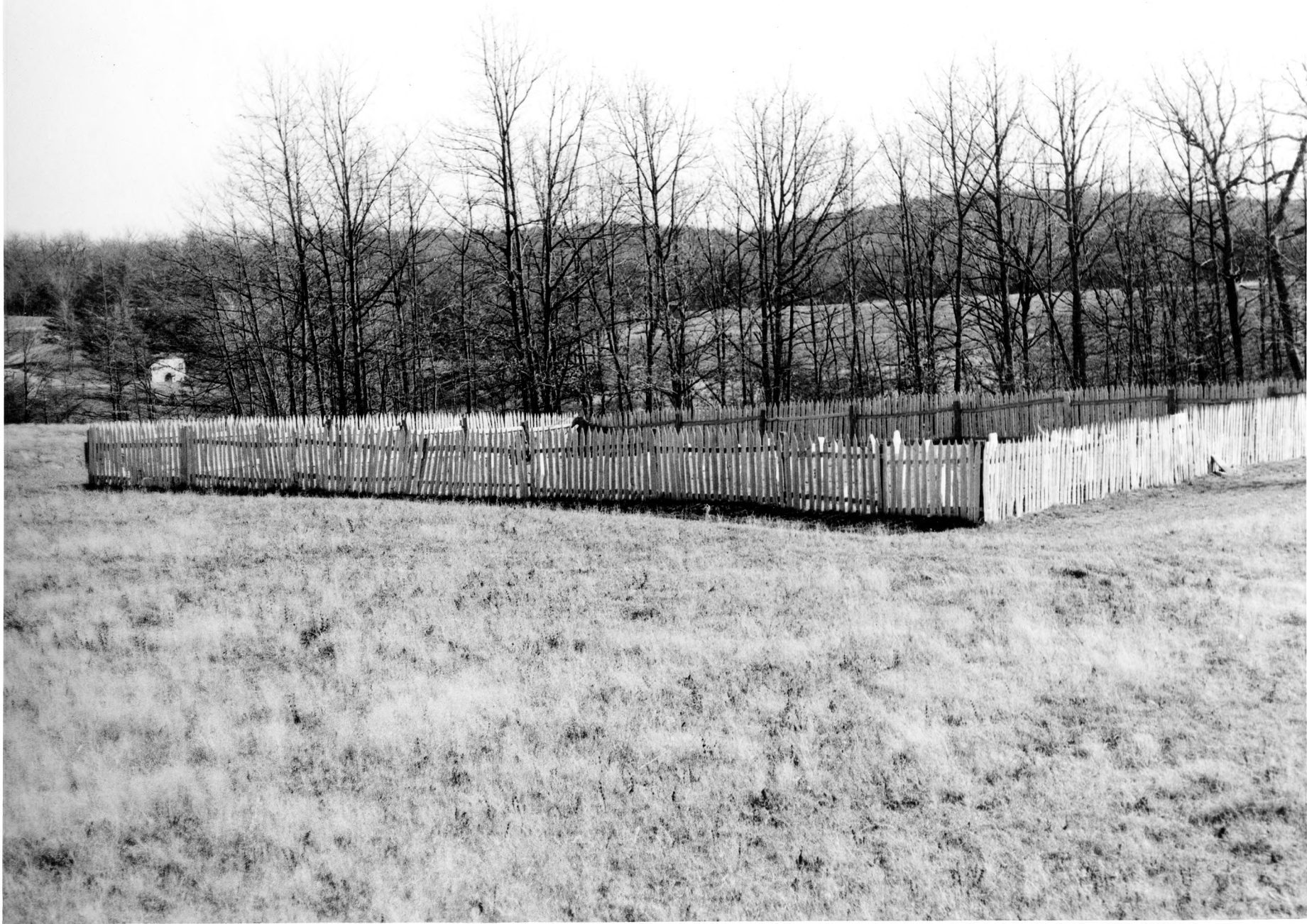


Hensley Settlement, Brush  
Mountain Outhouse #2, near  
Cabbage, Bell County, Ky.  
National Park Service, May, 1974

JAN 8 1980

Cumberland Gap NHP  
Photo 30 - Front view, facing  
generally south

DEC 9 1976



Hensley Settlement, Hensley  
Graveyard, near Cubbage, Bell  
County, Ky.

National Park Service, November,  
1974

JAN 8 1980

Cumberland Gap NHP

Photo 31 - View of enclosure from  
outside, facing east

DEC 9 1976





Hensley Settlement, Gillis Lee  
House (H-37), near Cubbage,  
Bell County, Ky.

National Park Service, October,  
1975

JAN

8 1980

Cumberland Gap NHP  
Photo 32 - Chimney stones,  
facing southwest

DEC 9 1976



Hensley Settlement, Oscar Hensley  
House (H-38), near Cubbage, Bell  
County, Ky.

National Park Service, October,  
1975

JAN 8 1980

Cumberland Gap NHP

Photo 33 - View of east end

facing southwest

DEC 9 1976





Hensley Settlement, Sherman  
Hensley Stock Pen (H-39), near  
Cubbage, Bell County, Ky.  
National Park Service, October,  
1975

JAN 8 1980

Cumberland Gap NHP  
Photo 34 - One section of rails,  
facing generally east

DEC 9 1976



Hensley Settlement, Sherman  
Hensley Smokehouse, near Cabbage,  
Bell County, Ky.

National Park Service December  
1974 **JAN 8 1980**

Cumberland Gap NHP

Photo 35 - Front of building  
showing doorway, facing northwest

**DEC 9 1976**





Hensley Settlement, Wallace  
Hensley Barn (H-41), near  
Cubbage, Bell County, Ky.  
National Park Service, October,  
1975

JAN 8 1980

Cumberland Gap NHP  
Photo 36 - View of site facing  
southeast (no remains visible)

DEC 9 1976



Hensley Settlement, Grant Hensley  
Cabin (H-42), near Cabbage,  
Bell County, Ky.

National Park Service, October,  
1975

JAN 8 1980

Cumberland Gap NHP

Photo 37 - Chimney stones on  
ground, facing southeast

DEC 9 1976





Liege Gibbons Farm  
Cumberland Gap National Historical Park  
Bell Co., KY  
View from W  
Sept. 1995



Finley Hensley House

IDLCS 07068

Cumberland Gap National Historical Park

Bell Co., KY

View from NW

Sept. 1995





Park Hensley House

● Cumberland Gap National Historical Park

Bell Co., KY

View from E

Sept. 1995



Bert Hensley House

IDLCS 07060

Cumberland Gap National Historical Park

Bell Co., KY

View from NW

Sept. 1995