



TC
BARCLAY

ACME

VACUUMS

R.J. LIQUORS

R.J.

ACME

KARATE

COFFEE SHOP

LUNCHEONETTE

South Village

Trenton, Mercer Co., NJ

Credit: Charles H. Ashton, Heritage Studies,
Inc., Feb. 1982

Negative at NJSHP0

View W of Lalor Streetscape, dominated by #9;
#'s 7 and 8 visible at L.

Photo 1

2-6



South Village

Trenton, Mercer Co., NJ

Credit: Charles H. Ashton, Heritage Studies,
Inc., Feb. 1982

Negative at NJSHP0

View NW along Lalor Street; L-R #'s 7,8,9

Photo 2



South Village
Trenton, Mercer Co., NJ
Credit: Charles H. Ashton, Heritage Studies,
Inc., Feb. 1982
Negative at NJSHP0
View E of Lalor Streetscape; cemetery at
R, #'s 7-9 at center.

Photo 3

2-7



South Village
Trenton, Mercer Co., NJ
Credit: Charles H. Ashton, Heritage Studies,
Inc., Feb. 1982
Negative at NJSHP0
View NE of Stokely Streetscape; L-R #'s 3C-
3A, 5A. Compare with 1900 view (Photo R-1).
Note ghost of conveyor to #6, 2nd floor
extreme R.

Photo 4

1-15A



South Village

Trenton, Mercer Co., NJ

Credit: Charles H. Ashton, Heritage Studies,
Inc., Feb. 1982

Negative at NJSHP0

View NW across Lalor Street and Canal bed of
#'s 9 (L) and 5B and C (background,
extreme R).

Photo 5

2-19



South Village
Trenton, Mercer Co., NJ
Credit: Charles H. Ashton, Heritage Studies,
Inc., Feb. 1982
View NE on Stokley Avenue; R-L #'s 3A-C.

Photo 6

1-16A



South Village

Trenton, Mercer Co., NJ

Credit: Charles H. Ashton, Heritage Studies,
Inc., Feb. 1982

Negative at NJSHP0

View NE across Stokley Avenue of #5A.

Photo 7

2-9



South Village

Trenton, Mercer Co., NJ

Credit: Charles H. Ashton, Heritage Studies,
Inc., Feb. 1982.

Negative at NJSHP0

View NW showing S facade of (L-R) #'s 5A, 5B,
and 5C. Joint between 5B and 5C visible be-
tween 3rd and 4th bays from R. Canal bed is
visible in foreground.

Photo 8



South Village
Trenton, Mercer Co., NJ
Credit: Charles H. Ashton, Heritage Studies,
Inc., Feb. 1982
Negative at NJSHPO
Detail of conversion of conveyor opening to
windows, 2nd floor of 5A, S facade.

Photo 9

1-12A



South Village

Trenton, Mercer Co., NJ

Credit: Charles H. Ashton, Heritage Studies,
Inc., Feb. 1982.

Negative at NJSHP0

Conversion of large opening to windows, mid-
dle bay of S facade, 5C.

Photo 10

1-6A



South Village

Trenton, Mercer Co., NJ

Credit: Charles H. Ashton, Heritage Studies,
Inc., Feb. 1982

Negative filed at NJSHPD

View NE across Stokely Avenue of W (front)
and S (side) facades of #6; 5A in background

Photo 11

2-14



ATLANTIC

100

10

Cadillac

1967 F-100

1968

60 Dodge

South Village
Trenton, Mercer Co., NJ
Credit: Charles H. Ashton, Heritage Studies,
Inc., Feb. 1982
Negative at NJSHPO
View NW of rear (E) and side (S) facades of
#6; 5A at R.

Photo 12

2-12



South Village

Trenton, Mercer Co., NJ

Credit: Charles H. Ashton, Heritage Studies,
Inc., Feb. 1982.

Negative at NJSHPD

View NW across Lalor Street of S facade of
#7; #8 is at R, above which is blank W
facade of S stairtower of #9. Approximate
match possible with Photo 14.

Photo 13



South Village
Trenton, Mercer Co., NJ
Credit: Charles H. Ashton, Heritage Studies,
Inc., Feb. 1982
Negative at NJSHPO
View NE along Stokely Avenue of W facade of
#7. Approximate match possible with Photo
13.

Photo 14



South Village

Trenton, Mercer Co., NJ

Credit: Charles H. Ashton, Heritage Studies
Inc., Feb. 1982

Negative at NJSHPO

View NE from Lalor Street of S facade of #8;
#9 also visible to R showing one of two
projecting stair towers and W facade of
main mass of building.

Photo 15

2-17



South Village

Trenton, Mercer Co., NJ

Credit: Charles H. Ashton, Heritage Studies,
Inc., Feb. 1982.

Negative at NJSHP0

View NE across Lalor Street and Canal bed of
E facade of #9. Note piers and panels on
floors 3-5 only (also visible in Photo 15).
At extreme R, #'s 5B and 5C visible.

Photo 16

2-4



South Village

Trenton, Mercer Co., NJ

Credit: Charles H. Ashton, Heritage Studies,
Inc., Feb. 1982.

Negative at NJSHP0

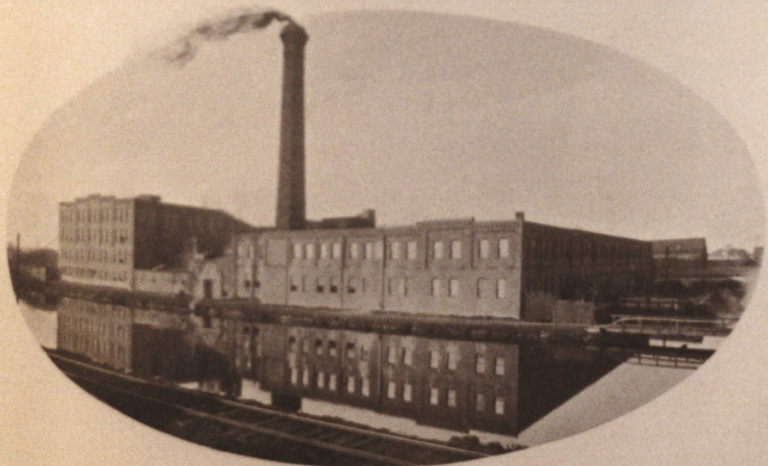
Typical interior corridor with rehabilita-
tion nearly complete.

Photo 17

1-17A



SOUTH-WEST VIEW.



NORTH-EAST VIEW.

TRENTON FIRE CLAY AND PORCELAIN COMPANY,
TRENTON, NEW JERSEY.

South Village

Trenton, Mercer Co., NJ

Credit: Charles H. Ashton, Heritage Studies, Inc. (See below for source)

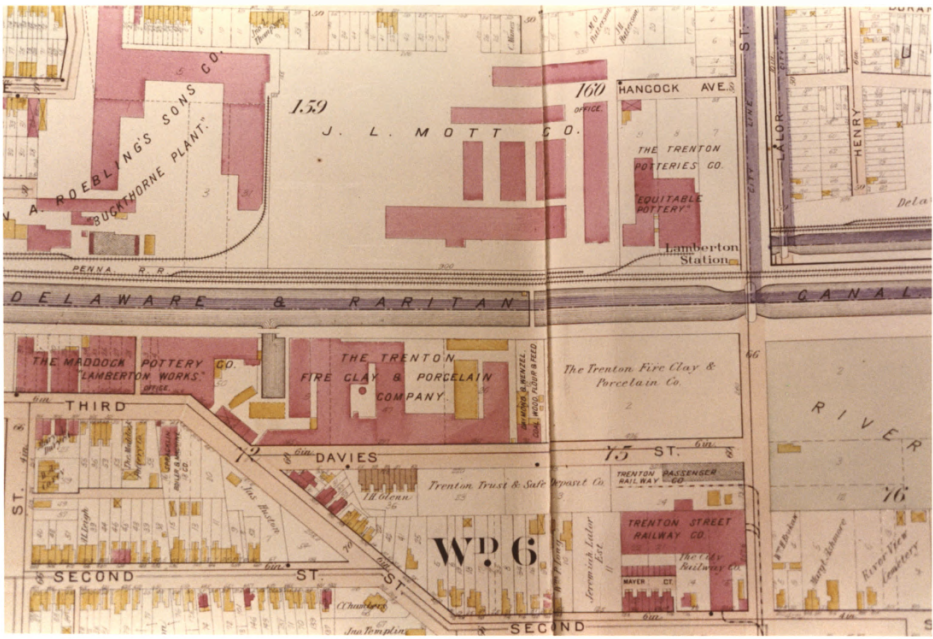
March 1982

Negative at NJSHP0

Reproduction of p. 69 of Wolf (see Bibliography), originally published in 1900. The upper ("south-west") view is taken looking across Davies Street toward the northeast; the building on the left with the monitor roof is 3A. Behind it, at right angles, is believed to be what became the northern component of 4 (the southern part was not built until 1914). Note the absence of 5A; the coal pile at extreme right; and the wooden picket fence at the sidewalk line.

The lower ("north-east") view shows no buildings now standing. At extreme left is the west facade of the northern part of 4; to the right of it are the buildings which stood between 4 and 2. Note towpath bridge at far right.

Photo R-1



A. ROEBLING'S SONS CO.
BUCKTHORNE PLANT.

159

J. L. MOTT CO.

160

HANCOCK AVE

THE TRENTON POTTERIES CO.

EQUITABLE POTTERY

Lamberton Station

DELAWARE & RARITAN

CANAL

THE MADDOCK POTTERY CO.
"LAMBERTON WORKS."

THE TRENTON
FIRE CLAY & PORCELAIN
COMPANY.

The Trenton Fire Clay & Porcelain Co.

THIRD

DAVIES

15 ST.

RIVER

ST.

W.P. 6

SECOND

ST.

Trenton Trust & Safe Deposit Co

TRENTON PASSENGER RAILWAY CO

TRENTON STREET RAILWAY CO

RAVER CT

REAR VIEW LUMBERY

SECOND

South Village

Trenton, Mercer Co., NJ

Credit: Charles H. Ashton, Heritage Studies, Inc. (See below for source)

March 1932

Negative at NJSHP0

Reproduction of Lathrop's Atlas (see Bibliography), pl. 11, originally published in 1905. North is at left, pink buildings are brick, yellow are frame. In the five years since Photo R-1, Daymond & Wenzel have appeared (now Building 6); 5A and 5B have been built, and a brick circular kiln stood east of 3 (beneath the word "CLAY"). The southern part of the site was vacant.

Photo R-2

THE J. L. MOTT IRON WORKS
Mfrs of Best Taps, Fixtures, etc.

CONTRACT MATCHED REPORT TO ALL MINUTE COPY-
FROM AN APPROXIMATE 2000 1/2 SQUARE FEET. COAL - LIGHT BLUE
ROCKY COARSE & BLUE 1/2 IN. - 1/2 IN. IN SIZE. AS KNOWN
IN BLUE. WITH CITY WATER. BEST TAPERS IN WHOLE OR PART
IN BLUE. ALSO - 1/2 IN. COAL BY CITY TRUCKS OR RAILROAD
TRUCKS. IN ALL PLACES. LABORERS FOR WAGON AND
TRUCKS. THE CHIEF CLERK WITH BUREAU CITY THE
25th FEB 1888.

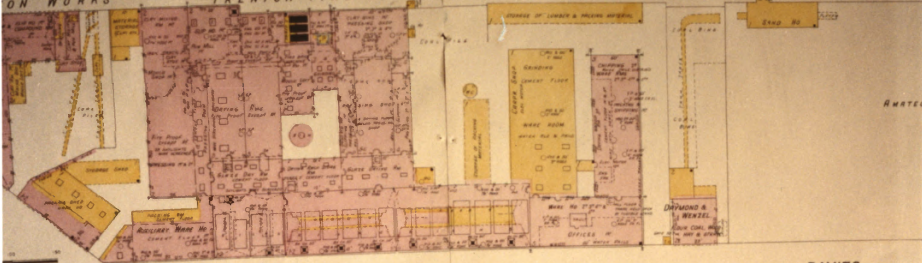
Delaware and Raritan Canal

TRENTON FIRE CLAY
Mfrs of Fire Bricks

CLAY & BRICK BATHING &
WATER SUPPLY. WATER IS TO
BE USED FOR COOKING & THE WARE
SHOULD BE DRY. ALL BRICK
SHOULD BE CITY WATER. ALL
THE BRICK BATHING 1/2 IN.
& ALL THE BRICK COAL

ON WORKS

TRENTON FIRE CLAY & PORCELAIN CO.



178

DAVIES

DAVIES
181

South Village

Trenton, Mercer Co., NJ

Credit: Charles H. Ashton, Heritage Studies, Inc. (See below for source)

March, 1982

Negative at NJSHPD

Reproduction of Sanborn's map of 1908, showing north half of site. North is at left, brick buildings are pink, frame buildings are yellow. Functions of individual spaces are given. The canal basin has been replaced by a coal pile, and a wooden storage building has been added east of 3. The shed dormers on 3C show clearly as dotted lines; compare with monitor on 3A and B. Daymond & Wenzel now had an elevated tram serving their coal bins. The legend truncated by the right margin reads, "Amateur Base and Foot Ball Field." Grandstands (farther south) were at Lalor Street.

Photo R-3

248

DAVIES

2

3RD

RYDER PL. BRIDGE

(LAMBERTON WORKS)

TRENTON FIRE CLAY & PORCELAIN CO
MFRS OF FIRE BRICK & PORCELAIN SPECIALTIES

J. L. MOTT CO. OWNER.
Admittance Refused - Diagram from Plans

Delaware & Raritan Canal

248

NOTE: ALL WORKS HEREIN SHOWN ARE APPROXIMATELY LOCATED FROM AERIAL PHOTOGRAPHS TAKEN IN 1938. THE LOCATION OF THE CANAL IS SHOWN AS APPROXIMATE. THE LOCATION OF THE CANAL IS SHOWN AS APPROXIMATE. THE LOCATION OF THE CANAL IS SHOWN AS APPROXIMATE.

249

251

South Village

Trenton, Mercer Co., NJ

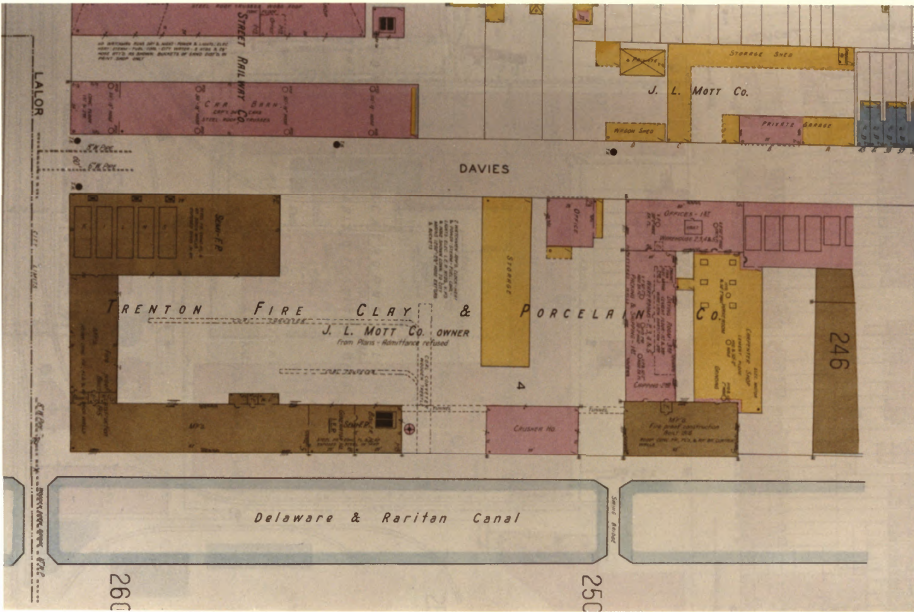
Credit: Charles H. Ashton, Heritage Studies, Inc. (See below for source)

March 1982

Negative at NJSHPO

Reproduction of Sanborn's map of 1927, showing north half of site. North is at right, brick buildings are pink, frame buildings are yellow, fireproof and semi-fireproof buildings are olive drab and are labelled as such. Significant changes have occurred in the previous 19 years; the eastern part of 2 has been extended to connect with 1; another circular kiln has been added; and the fireproof southern element of 4 has replaced several small wooden buildings. Note in legend that Mott is shown as the owner. This photo adjoins Photo R-5.

Photo R-4



STREET RAILWAY

ALL DISTANCES FROM LOT'S, ROAD, RIVER & CANAL, SHALL BE MEASURED FROM CORNER OF LOT, UNLESS OTHERWISE SPECIFIED. ALL DISTANCES FROM CORNER OF LOT, UNLESS OTHERWISE SPECIFIED, SHALL BE MEASURED FROM CORNER OF LOT.

J. L. MOTT Co.

STORAGE SHED

PRINTS GARAGE

WAGON SHED

LALOR

DAVIES

TRENTON FIRE CLAY & PORCELAIN CO.

J. L. MOTT Co. OWNER
from Plans - Resolutions refused

PORCELAIN

CO.

STORAGE

Office

Office - 1st

246

CRUSHER NO. 1

Fire proof construction

Delaware & Raritan Canal

260

250

STREET RAILWAY

South Village

Trenton, Mercer Co., NJ

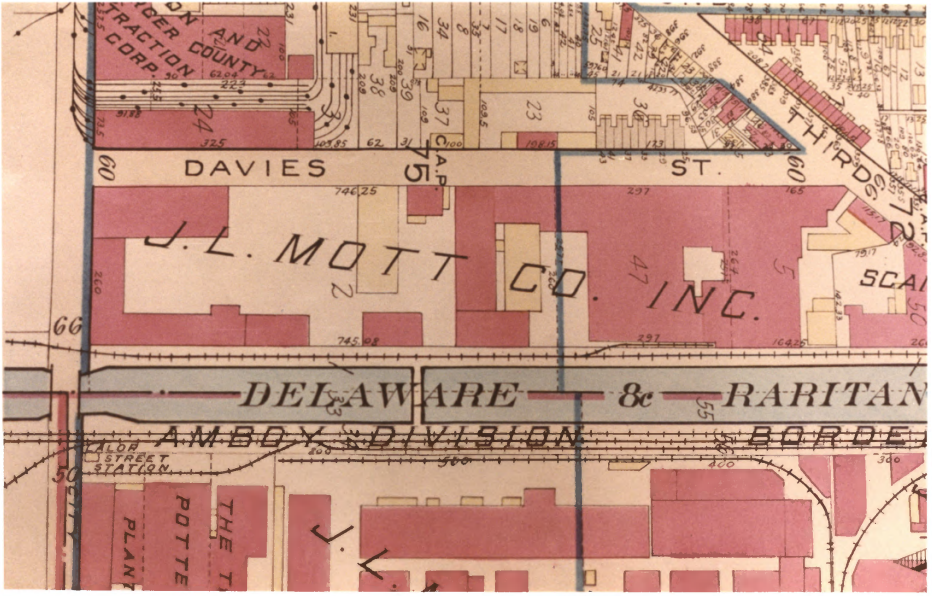
Credit: Charles H. Ashton, Heritage Studies, Inc. (See below for source)

March 1982

Negative at NJSHPO

Reproduction of Sanborn's map of 1927 showing southern half of site. North is at right, color key is the same as Photo R-4 (which this adjoins). All development south of 6 has taken place since 1908. Daymond & Wenzel (6) is now an office; the coal tram is not shown. East of 5B, 5C has been constructed; to the south, the crusher house (11), wooden storage building (gone), boiler/generator (10), and manufacturing buildings (7,8, and 9) are all shown. Elevated coal conveyors extend down the center of the yard.

Photo R-5



TRUCK AND TRACTION CORP.

DAVIES ST.

ST.

THIRD ST.

J.L. MOTT

CO. INC.

SCA...

DELAWARE & RARITAN

AMBOY DIVISION

STREET STATION

THE POTTE PLANT

South Village

Trenton, Mercer Co., NJ

Credit: Charles H. Ashton, Heritage Studies, Inc. (See below for source)

March 1982

Negative at NJSHP0

Reproduction of Franklin Survey map of 1930. North is to right, pink denotes brick, yellow indicated frame. The information on this map is not as detailed as that on the previous two, but is revealing nonetheless. There is now rail service on the west side of the canal, but more important, "Trenton Fire Clay and Porcelain" is nowhere to be seen.

Photo R-6



South Village
Trenton, Mercer Co., NJ
Credit: Charles H. Ashton, Heritage Studies, Inc. (See
below for source)
March 1982
Negative at NJSHPO

Reproduction of photo published in Trenton magazine in 1937
(see Bibliography). North is at upper left corner, south
is at lower right. Although the article this photo
accompanies was about the canal, the photo chosen to il-
lustrate it fortuitously shows all buildings then standing
(except #8) in the strip parallel to the canal and to the
left of it; the building truncated by the lower margin,
with four roof stacks, is #7. Note the similarities in
style of 11 (due east of 6) to 7 (in Photo 13). The coal
conveyor leading from the coal pile (bottom center) to the
powerhouse (10) is discernible; north of 7 appears to be
more coal, although the site had been unused for seven
years when this photo was taken (note the absence of
smoke). The two "milk bottle" kilns can just barely
be seen east of 3, and at least eight others (belonging
to other firms) can be seen in the neighborhood.

Photo R-7



South Village

Trenton, Mercer Co., NJ

Credit: Charles H. Ashton, Heritage Studies, Inc. (See below for source)

March 1982

Negative at NJSHP0

Reproduction of aerial photo taken c. 1977, looking almost due north. The filled-in canal bed is on the right. Significant changes have occurred in the 40 years since Photo R-7; Stokely-Van Camp has come and gone, but their conveyors connecting 7 to 6 and 9, and 6 to 5A, remain. The buildings (including the circular kilns) between 4 and 2 are gone, as are the coal piles and their conveyors. Large (double width) openings can be seen on the first floor of 5A, some of which have since been converted back to paired segmental-arch windows. Note the drastic changes elsewhere in the area, especially north of the site, partially the result of fires in the 1970's. Mature trees on the east side of Stokely Avenue form a buffer between the industrial buildings and the rowhouses across the street.

Photo R-8