



Laws Spring

Kaibab National Forest, 14 miles northeast of
Williams, Arizona

Photo by Thomas R. Cartledge

Photo date: 1983

Negative location: Kaibab National Forest,
Williams, Arizona

View: looking east at perennial pool

Photo number: 1

"S.B.W. 1883"

"RAE" "JB" "UPRR"
"AP 1868 ****"

"WWW" "CSM" "AWW"
"UPRWED 1868"

"C.R.M. 1883"

"SA WALKER 1883"

"LAWS SPRING"

Laws Spring

Kaibab National Forest, 14 miles northeast of
Williams, Arizona

Photo by Thomas R. Cartledge

Photo date: 1983

Negative location: Kaibab National Forest,
Williams, Arizona

View: looking east showing locations of inscriptions

Photo number: 2

A black and white photograph of a concrete marker. The marker is a rectangular block of concrete with a porous, pitted texture. It is painted with the words "LAWS" and "SPRING" in large, bold, sans-serif capital letters, stacked vertically. The marker is positioned on a light-colored, sandy or gravelly ground. To the left of the marker, there is a dark, cylindrical object, possibly a pipe or a piece of equipment. In the upper left corner, a wire mesh fence is visible. The overall scene appears to be an outdoor, possibly military or surveying, site.

LAWS
SPRING

"Laws Spring" - inscription
Kaibab National Forest, 14 miles northeast of
Williams, Arizona
Photo by Thomas R. Cartedge
Photo date: 1983
Negative location: Kaibab National Forest,
Williams, Arizona
View: specific location shown in Photo no. 2
Photo number: 3

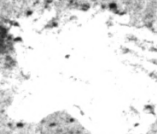
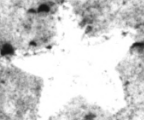
ALWAYS

WORNED
1968

"WWW" "CSM" "AWW" "UPRWED" "1868" - inscriptions
Kaibab National Forest, 14 miles northeast of
Williams, Arizona
Photo by Thomas R. Cartledge
Photo date: 1983
Negative location: Kaibab National Forest,
Williams, Arizona
View: specific location shown in Photo no. 2
Photo number. 4

RAE

JP
UPPER
APR 1968



"RAE" "JB" "UPRR" "AP 1868" and three stars -
inscriptions

Kaibab National Forest, 14 miles northeast of
Williams, Arizona

Photo by Thomas Cartledge

Photo date: 1983

Negative location: Kaibab National Forest,
Williams, Arizona

View: specific location shown in Photo no. 2

Photo number: 5



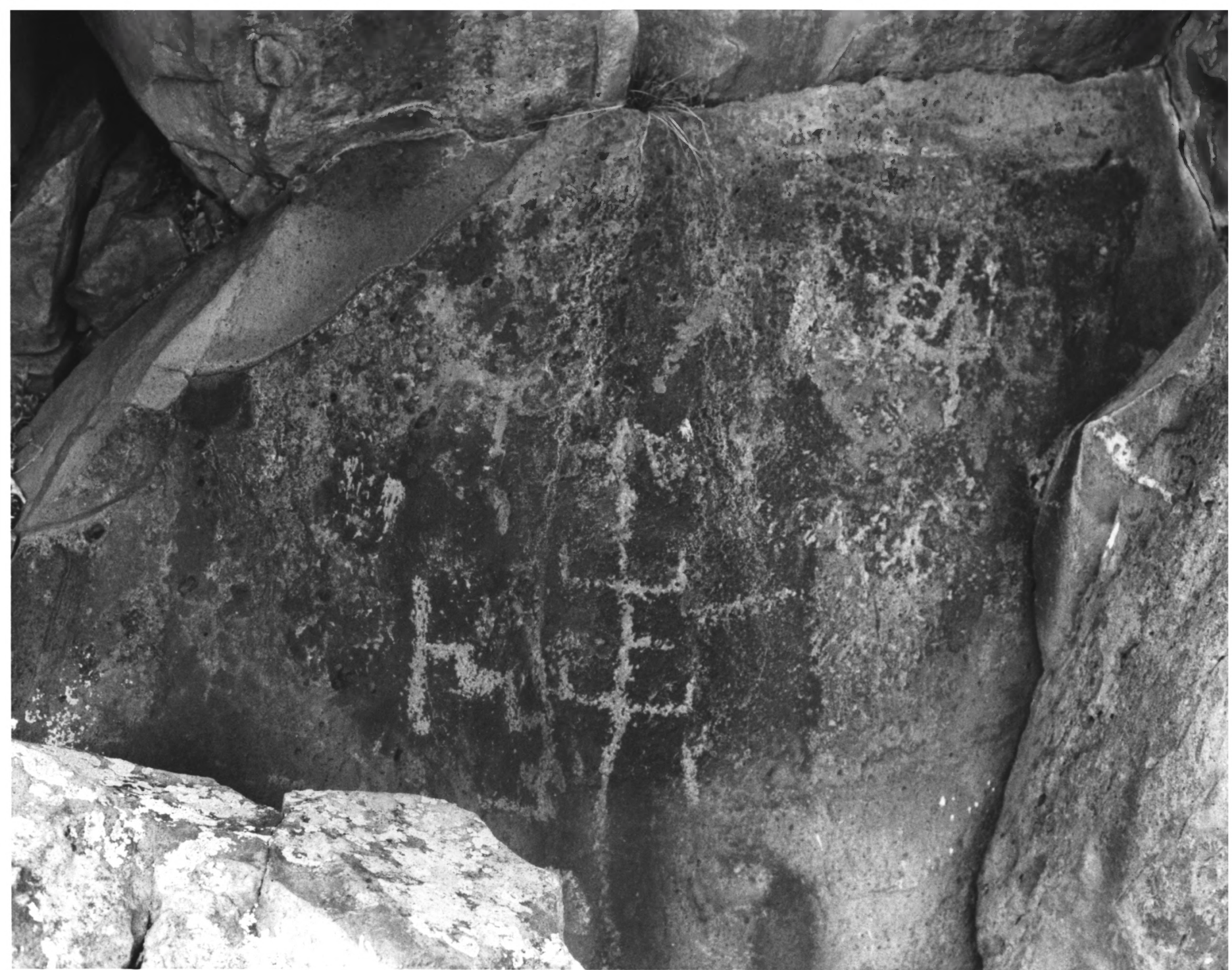
"S.B.W. 1883" - inscription
Kaibab National Forest, 14 miles northeast of
Williams, Arizona
Photo by Thomas R. Cartledge
Photo date: 1983
Negative location: Kaibab National Forest,
Williams, Arizona
View: specific location shown in Photo no. 2
Photo number: 6



"C.R.M. 1883" - inscription
Kaibab National Forest, 14 miles northeast of
Williams, Arizona
Photo by Thomas R. Cartledge
Photo date: 1983
Negative location: Kaibab National Forest,
Williams, Arizona
View: specific location shown in Photo no. 2
Photo number 7

SANDWALKER
1883

"S A WALKER 1883" - inscription
Kaibab National Forest, 14 miles northeast of
Williams, Arizona
Photo by Thomas R. Cartledge
Photo date: 1983
Negative location: Kaibab National Forest,
Williams, Arizona
View: specific location shown in Photo no. 2
Photo number: 8



Prehistoric petroglyphs

Kaibab National Forest, 14 miles northeast of
Williams, Arizona

Photo by Thomas R. Cartledge

Photo date: 1983

Negative location: Kaibab National Forest,
Williams, Arizona

View: example of petroglyphs on bluffs above
Laws Spring

Photo number: 9



ALOE GARDNER Photographer.

311 Seventh Street, Washington.

ACROSS THE CONTINENT ON THE KANSAS PACIFIC RAILROAD.

"Laws Tank, on the western slope of the Mogoyon Range, Arizona"

Kaibab National Forest, 14 miles northeast of Williams, Arizona

Photo by Alexander Gardner

Photo date: 1868

Negative location: Boston Public Library

View: looking north at camp area. Laws Spring at base of two large trees in center middle ground.

Photo number: 10



Laws Spring

Kaibab National Forest, 14 miles northeast of
Williams, Arizona

Photo by Thomas R. Cartledge

Photo date: 1983

Negative location: Kaibab National Forest,
Williams, Arizona

View: looking north at same area shown in
Gardner's 1868 photo.

Photo number: 11