

2013

NATIONAL REGISTER OF HISTORIC PLACES REGISTRATION FORM

This form is for use in nominating or requesting determinations of eligibility for individual properties or districts. See instructions in "Guidelines for Completing National Register Forms" (National Register Bulletin 16). Complete each item by marking "x" in the appropriate box or by entering the requested information. If an item does not apply to the property being documented, enter "N/A" for "not applicable." For functions, styles, materials, and areas of significance, enter only the categories and subcategories listed in the instructions. For additional space use continuation sheets (Form 10-900a). Type all entries.

1. Name of Property

historic name R.P. Sorrells House
other names/site number

2. Location

street & number 220 Prince Avenue
city, town Athens (n/a) vicinity of
county Clarke code GA 059
state Georgia code GA zip code 30601

(n/a) not for publication

3. Classification

Ownership of Property:

- private
- public-local
- public-state
- public-federal

Category of Property

- building(s)
- district
- site
- structure
- object

Number of Resources within Property:

	<u>Contributing</u>	<u>Noncontributing</u>
buildings	2	0
sites	0	0
structures	0	0
objects	0	0
total	2	0

Contributing resources previously listed in the National Register: 0

Name of related multiple property listing: n/a

4. State/Federal Agency Certification

As the designated authority under the National Historic Preservation Act of 1966, as amended, I hereby certify that this nomination meets the documentation standards for registering properties in the National Register of Historic Places and meets the procedural and professional requirements set forth in 36 CFR Part 60. In my opinion, the property meets the National Register criteria. () See continuation sheet.

Elizabeth A. Lyon
Signature of certifying official

12/6/91
Date

Elizabeth A. Lyon
State Historic Preservation Officer,
Georgia Department of Natural Resources

In my opinion, the property () meets () does not meet the National Register criteria. () See continuation sheet.

Signature of commenting or other official

Date

State or Federal agency or bureau

5. National Park Service Certification

**Entered in the
National Register**

I, hereby, certify that this property is:

entered in the National Register

Delores Byers 1/22/92

determined eligible for the National Register

determined not eligible for the National Register

removed from the National Register

other, explain:

see continuation sheet

for
Signature, Keeper of the National Register Date

6. Function or Use

Historic Functions:

DOMESTIC:single dwelling

Current Functions:

COMMERCE:professional

7. Description

Architectural Classification:

Late 19th and 20th Century Revivals:Neoclassical Revival

Materials:

foundation	brick
walls	weatherboard
roof	asphalt
other	n/a

Description of present and historic physical appearance:

The R.P. Sorrells House is located in the city of Athens, Clarke County, in northeast Georgia. The house is located on a major highway that was once lined with substantial 19th-century houses but has been encroached upon by mid-20th-century commercial development to the point where only isolated historic houses remain.

The structure is a two-story, wood-framed, building designed using a combination of Queen-Anne and Neoclassical Revival features. The exterior retains its brick foundation, clapboard, brick chimneys, a large hipped roof with a variety of dormers, cornices with dentils and brackets, front and side bay windows, and central entrance with elliptical fanlight and sidelights. Various window configurations, oval and semi-circular windows and vents remain. The front entrance stained glass windows contain a fleur-de-lis symbol. Dormers feature sunburst and decorative shingles. The one-story front porch and the small side porch are not the original porch configurations, but may be remnants of the original porch. The porch reflects a classical design with Tuscan order columns, pilasters, and a dentiled cornice (photographs 1-5).

The interior features a central hall with large rooms on either side. Interior wood moldings, corner blocks with paterae, wood floors, paneled and beaded wainscoting, interior transom windows, and pocket and paneled doors are intact. Seven mantels with cast-iron fireboxes and tile also illustrate the two architectural styles. The classical mantels incorporate columns and modillions; the Victorian-inspired mantels use arched over-mirrors with curvilinear wood detailing. An example of the extensive craftsmanship is the elaborate main stairway with a wood screen, ornamental brackets, turned balusters, newel posts, and drops. A coffin lift was added in the early 20th-century

United States Department of the Interior
National Park Service

**National Register of Historic Places
Continuation Sheet**

Section 7

when the house was used as a funeral home. The coffin crank system remains (photograph 6-13).

The house sits on a gently sloping lot. The front yard is newly landscaped and bordered by a white picket fence. A one-story, frame, former servants quarters with a gabled, tin roof is located at the rear of the lot. The side and rear areas are used for parking. The building is located next to the Joseph Henry Lumpkin House already listed on the National Register.

8. Statement of Significance

Certifying official has considered the significance of this property in relation to other properties:

nationally statewide locally

Applicable National Register Criteria:

A B C D

Criteria Considerations (Exceptions): N/A

A B C D E F G

Areas of Significance (enter categories from instructions):

Architecture

Period of Significance:

c. 1907.

Significant Dates:

c. 1907.

Significant Person(s):

n/a

Cultural Affiliation:

n/a

Architect(s)/Builder(s):

n/a

National Register of Historic Places
Continuation Sheet

Section 8

Significance of property, justification of criteria, criteria considerations, and areas and periods of significance noted above:

Narrative statement of significance (areas of significance)

The R. P. Sorrells house is significant in architecture as an example of the turn-of-the-century combination of Queen Anne and Neoclassical Revival styles. The symmetrical form of the house, elliptical fanlights, porch columns, and interior wainscoting are classical influences, while the decorative gables, front and side bay windows, various window configurations, and interior foyer screen illustrates Victorian design influences. The interior detailing is also reflective of the two styles. The fireplace mantels use either columns, swags and urns, or arched wood mantles with overmirrors and filigree ornamentation. The interior craftsmanship is evident by the pocket doors, reeded window and door moldings with paterae, cornice and floor moldings, paneled doors, a decorative staircase with brackets, wainscoting, turned newel posts, and drops. The house was built by Dr. R. P. Sorrells in c. 1907. It was later purchased by George Mason, a cotton buyer, in 1913. In the early 20th-century, the house became McDorman's Funeral Home. In recent years it contained law offices until 1988 when the building was rehabilitated for use as a travel agency. The house retains its integrity and is significant as an excellent example of the turn-of-the-century combination of Queen Anne and Neoclassical Revival styles. Combining styles was fairly commonplace in Georgia towns at the turn-of-the-century, and the R. P. Sorrells house is an especially good example of this practice because the two styles are relatively distinguishable. The nominated property is also representative of the large houses that once lined Prince Avenue.

National Register Criteria

The property meets Criteria C because the house is an example of a eclectic combination of details from two popular national styles--the Queen Anne and Neoclassical Revival--commonly used in Georgia during the early 20th century. The house is design with symmetrical massing, a front one-story porch with columns, bay windows, stained and leaded glass windows, fanlights, ornamented gables, and dormers. This structures embodies many fine characteristics of American craftsmanship from its exterior design to its interior detailing including original wood mantels with overmirrors, tile, cast-iron fireboxes, moldings, wainscoting, turned stairway balusters, and a central hall screen with elaborate spindlework. The house is a good example of using elements from two different styles. This practice commonly occurred in Georgia communities during the early 20th century.

National Register of Historic Places
Continuation Sheet

Section 8

Period of significance (justification, if applicable)

c. 1907 - house was built. (Assume servant's house built at the same time).

Contributing/Noncontributing Resources (explanation, if applicable)

2 - main house, servant's house.

9. Major Bibliographic References

Hackney, Shelia. "R.P. Sorrells House." Historic Property Information Form, May 5, 1990. On file at the Historic Preservation Section, Department of Natural Resources, Atlanta, Georgia.

Previous documentation on file (NPS): () N/A

- preliminary determination of individual listing (36 CFR 67) has been requested
- previously listed in the National Register
- previously determined eligible by the National Register
- designated a National Historic Landmark
- recorded by Historic American Buildings Survey #
- recorded by Historic American Engineering Record #

Primary location of additional data:

- State historic preservation office
- Other State Agency
- Federal agency
- Local government
- University
- Other, Specify Repository:

Georgia Historic Resources Survey Number (if assigned):

10. Geographical Data

Acreage of Property less than one acre.

UTM References

A) Zone 17 Easting 279880 Northing 3760140

Verbal Boundary Description

The proposed boundary follows the current legal boundaries and encompasses the rectangular lot on which the building sits.

Boundary Justification

The nominated property consists of the remaining city lot historically associated with the house. It includes the house, and the servant's house.

11. Form Prepared By

name/title Lisa Raflo, National Register Specialist
organization Office of Historic Preservation, Georgia Department of
Natural Resources
street & number 205 Butler Street, S.E., Suite 1462
city or town Atlanta **state** Georgia **zip code** 30334
telephone 404-656-2840 **date** December 5, 1991

(HPS form version 11-02-90)

United States Department of the Interior
National Park Service

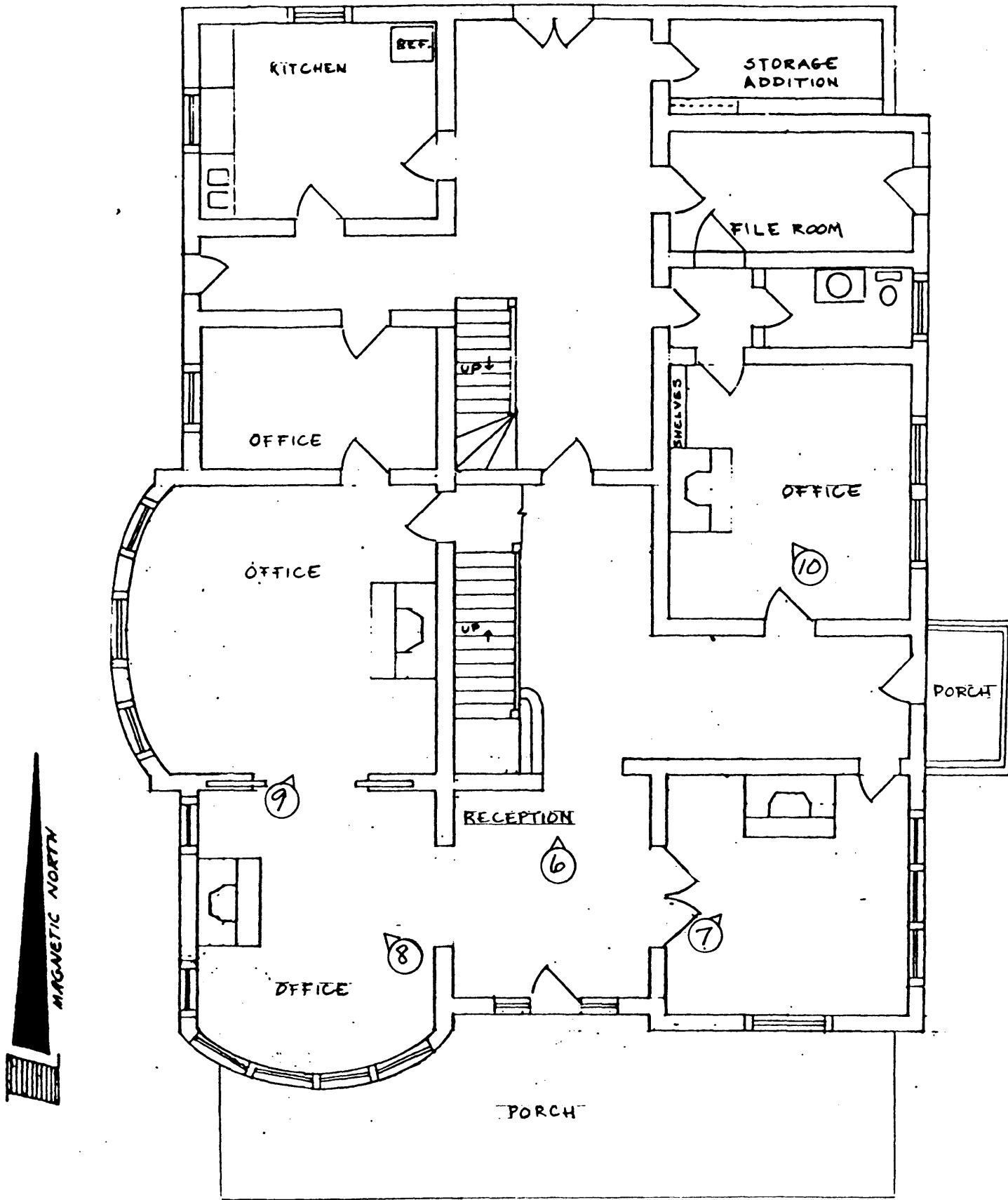
National Register of Historic Places
Continuation Sheet

Photographs

Name of Property: R.P. Sorrells House
City or Vicinity: Athens
County: Clarke County
State: Georgia
Photographer: James R. Lockhart
Negative Filed: Georgia Department of Natural Resources
Date Photographed: 1/91

Description of Photograph(s):


- 1 of 13: Front facade; photographer facing north.
- 2 of 13: Front and side view; photographer facing northwest.
- 3 of 13: Front and side view; photographer facing northeast.
- 4 of 13: East facade, side porch; photographer facing west.
- 5 of 13: Rear view; photographer facing southwest.
- 6 of 13: Interior central hallway; photographer facing north.
- 7 of 13: Front room, classical fireplace mantel; photographer facing northeast.
- 8 of 13: Front room, Victorian-influenced fireplace mantel, pocket doors; photographer facing northwest.
- 9 of 13: Side room, classical fireplace mantel; photographer facing northeast.
- 10 of 13: Side room, simple fireplace mantel; photographer facing northwest.
- 11 of 13: Upstairs hallway; photographer facing north.
- 12 of 13: Upstairs front room, fireplace mantel; photographer facing southwest.
- 13 of 13: Upstairs front room, fireplace mantel; photographer facing northeast.



R. P. Sorrells House, Athens, Clarke Co.,
Georgia

Sketch Map - First Floor


Scale: none

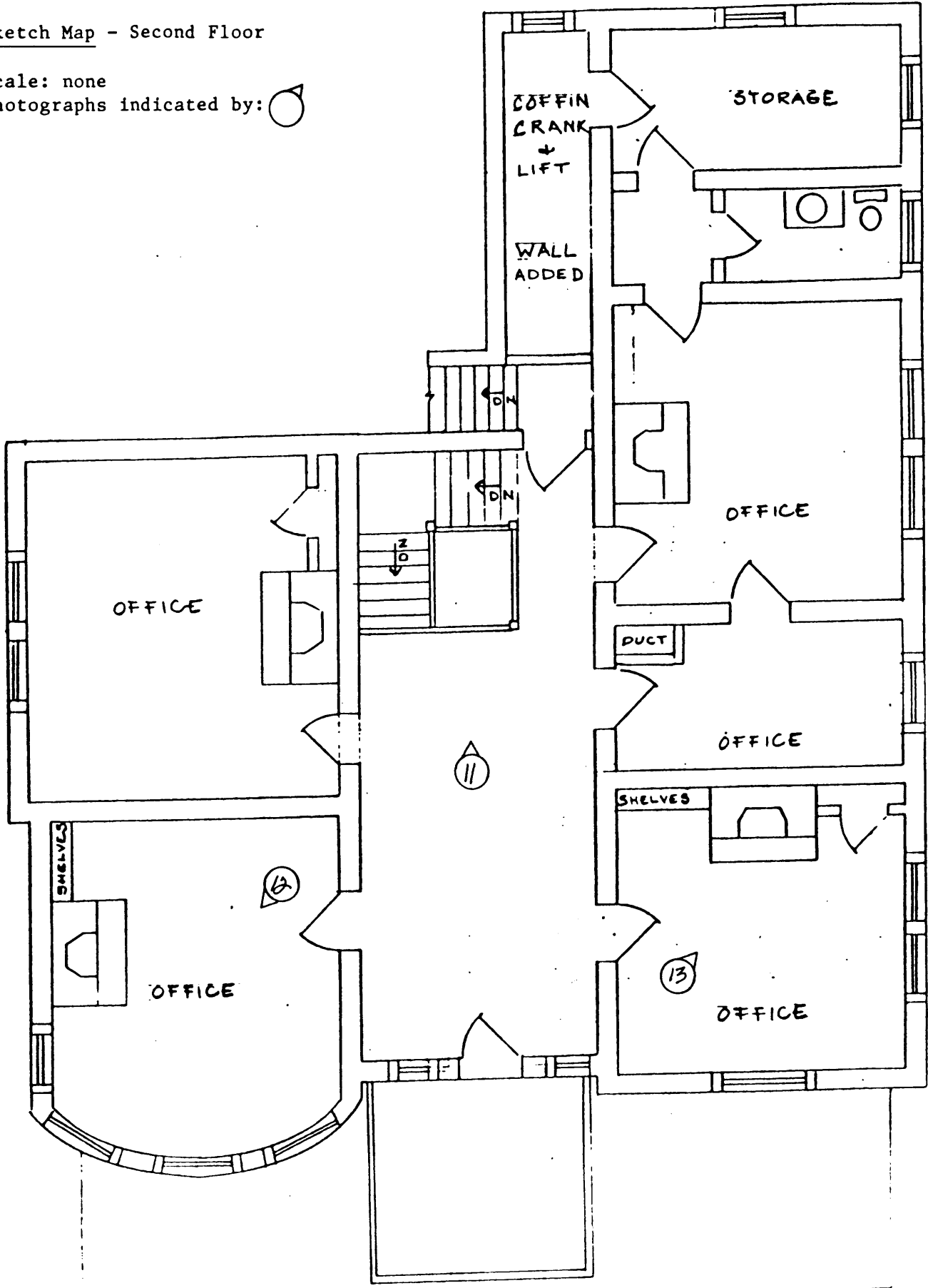
Photographs indicated by: 

R. P. Sorrells House, Athens, Clarke Co.,
Georgia

Sketch Map - Second Floor

Scale: none

Photographs indicated by: 




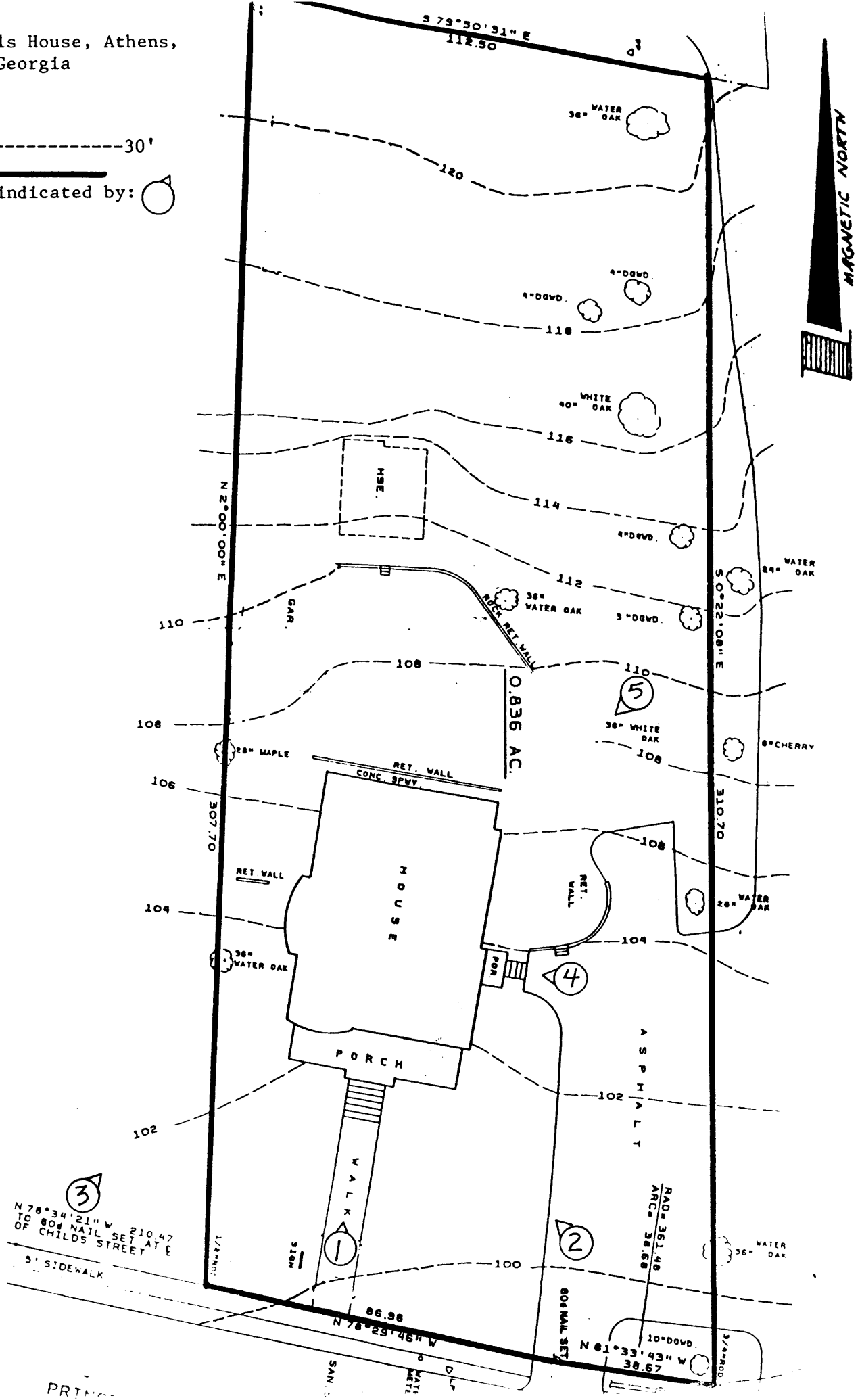
R. P. Sorrells House, Athens, Clarke Co., Georgia

Plat Map

Scale: 0"-----30'

Boundary: 

Photographs indicated by: 



PRINCIPAL