

JAN 0 2 1990

0012

FORM A - AREA

MASSACHUSETTS HISTORICAL COMMISSION  
80 BOYLSTON STREET, BOSTON, MA 02116

Area Letter Form numbers in this Area

NC-B	
------	--

Town Newton (Newton Centre, Chestnut Hill)

Name of Area (if any) Commonwealth Avenue  
Historic District

Present Use residential, commercial

General Date or Period 1890s-1930s

General Condition good

Acreage 2,433,615 sq.ft. / c55.86 Acres

Recorded by Candace Jenkins/Susan Abele

Organization Newton Historical Comm.

Date 1/1987; rev. 5/1988

Photos (3"x3" or 3"x5" black & white) Indicate on back of each photo street addresses for buildings shown. Staple to left side of form.

Sketch Map. Draw a general map of the area indicating properties within it. Number each property for which individual inventory forms have been completed. Label streets including route numbers, if any. Indicate north. (Attach a separate sheet if space here is not sufficient).

see attached map

UTM REFERENCE A/19/318 230 14689450  
B/19/318 250 14689570  
C/19/321 200 14689600  
D/19/321 280 14689510  
E/19/319 110 14689110

USGS QUADRANGLE NEWTON

SCALE 1:25,000

NATIONAL REGISTER CRITERIA STATEMENT (if applicable)

The Commonwealth Avenue Historic District possesses integrity of location, design, setting, materials, workmanship, feeling and association. It is significant for its powerful influence on the development of central Newton as it made previously remote areas easily accessible. It is also important as a picturesque, curving boulevard lined by well-detailed turn-of-the-century residences. The district thus meets criteria A and C of the NRHP

ARCHITECTURAL SIGNIFICANCE Describe important architectural features and evaluate in terms of other areas within the community.

Commonwealth Avenue was laid out in Newton in the 1890s as a broad boulevard with a 30' center strip initially used for a double-track electric railroad. Like other such roads in the Boston area (Beacon Street in Brookline and Commonwealth Avenue in Boston), it was developed with residential structures and small commercial nodes at the intersection of major cross streets. It was unique however in its curvilinear route traversing varied and hilly terrain. Those picturesque qualities along with the city's intense dislike for apartment blocks led to its development with substantial single family homes rather than the more characteristic multi-family dwellings.

(see continuation sheet)

HISTORICAL SIGNIFICANCE Explain historical importance of area and how the area relates to the development of other areas of the community.

By the last quarter of the nineteenth century substantial development had taken place in the villages along the Circuit Railroad, however the city's mid-section between the rail lines remained sparsely settled. North-south connections between the rail lines were improved when, in 1891, the street railway extended its route along Walnut Street and up Homer Street to Newton Centre, but further development was hindered by the lack of a major east-west route through the middle of Newton. In the early 90s ambitious landowners and developers began to promote construction of such a route and a Boulevard Commission was established by the Mayor to study the project. Although several routes were considered, a group of landowners known as the Newton Boulevard Syndicate were willing to give cash contributions and land in lieu of betterments in order to secure their desired route between Chestnut Hill and Centre Street. Their plans prevailed, and an interim report of the Commission submitted the project to the City for surveys and estimates in 1893. The final report issued a few months later, upheld the earlier proposal and extended the boulevard to the western boundary of Newton at the Charles River in Auburndale. Final plans for the boulevard were drawn by Newton City Engineer Albert Noves, but the influence of Frederick Law Olmsted, who designed

BIBLIOGRAPHY and/or REFERENCES

(see continuation sheet)

INVENTORY FORM CONTINUATION SHEET

MASSACHUSETTS HISTORICAL COMMISSION  
Office of the Secretary, Boston

Community: Newton (Newton Centre)	Form No: NC-B
Property Name: Commonwealth Avenue H.D.	

Indicate each item on inventory form which is being continued below.

### ARCHITECTURAL SIGNIFICANCE (cont.)

Most of the structures on the eastern half of Commonwealth Avenue (between Chestnut Hill Reservoir and Walnut Street) were erected fairly soon after its completion, and tend to date from the 1890s to 1920s. A handful of earlier 2nd Empire style houses are included as well. The earliest styles that appear in any numbers are the Queen Anne, Shingle, and Classical Revival. The majority of houses however are traditional two story Colonial Revival style structures with symmetrical facades. The Craftsman style is also well represented with bungalow, foursquare and two-family forms. The Tudor Revival style is less common, and only a few houses of French or Spanish derivation are present. Intrusions are generally confined to a handful of later Capes, Ranches or Split Levels as the area was already well developed by the mid-20th century.

Some of the most elaborate houses in the district appear at its eastern end and include a group of well-detailed Classical Revival style structures as well as the city's finest example of the Spanish Colonial Revival style which is described later in this text. The **Moses H. Gulesian House, 85 Commonwealth Avenue** (c1900) is the easternmost of three adjacent Classical Revival style houses. It is a large 2 1/2 story clapboard clad residence whose cubic mass is enclosed by a hipped red tile roof with modillion cornice. The symmetrical three bay facade is centered on a projecting pedimented pavilion supported on Composite columns. The full entablature of this element projects across the facade where it is supported on engaged corner columns; the entry is framed by a leaded elliptical fan and sidelights as well as pilasters. The adjacent **Agustus Foucar House, 95 Commonwealth Avenue** (1901) presents a more severe Neo-classical design. It is also a cubic 2 1/2 story structure enclosed by a hip roof, but here the low pitched roof is extended laterally to form open, quatrastyle, Tuscan porches. The full entablature which encircles the house is decorated with classical wreaths in the frieze area. A balustraded verandah ascended by a double stair enhances the air of formality. The **Philip Hartley House, 103 Commonwealth Avenue** (1901) is similar to the others with its blocky 2 1/2 story form, hip roof and clapboard siding. Here the three bay facade is centered on a pedimented pavilion with imposing two-story, semi-circular, Ionic porch crowned by anthemion cresting.

A small number of Queen Anne and Shingle Style houses punctuate the predominant classically derived character of the district. One of the finest and most prominent is the **Frank Schirmer House, 332 Commonwealth Avenue** (1895) which occupies a large, elevated lot at the corner of Wachusett Road. It is a well-conceived example of the Shingle Style whose asymmetrical, 2 1/2 story form is enclosed by intersecting gable

INVENTORY FORM CONTINUATION SHEET

MASSACHUSETTS HISTORICAL COMMISSION  
Office of the Secretary, Boston

Community: Newton (Newton Centre)	Form No: NC-B
Property Name: Commonwealth Avenue H.D.	

Indicate each item on inventory form which is being continued below.

Architectural Significance (cont.)

roofs and whose wall surfaces are sheathed with a combination of shingles at the upper stories and rough cut stone at the lower story. Other fine features include a verandah with heavy stone piers and leaded, stained glass windows. The **Harry C. Ayer House, 833 Commonwealth Avenue** (1897) is a fairly simple example of the Queen Anne style located near the western end of the district. It is a 2 1/2 story shingled structure enclosed by a steep gable roof. The asymmetrical facade is dominated by a large cross-gable with overhang and an over-scale pedimented dormer. The eastern half of the first story is cut-away to form a recessed verandah. Most windows contain diamond-pane over single-pane sash. The **Frank Robinson House, 295 Commonwealth Avenue** (1897) dates from the same period as the two preceding examples but has begun to assume some of the classical symmetry and detail of the increasingly popular Colonial Revival style. It is a 2 1/2 story shingle clad structure enclosed by a gable roof with two hip roof dormers flanking a large gable dormer with recessed Palladian window. The symmetrical three bay facade is centered on an entry framed by exceptionally wide leaded-glass sidelights and flanked by bay windows. Three evenly spaced windows light the overhanging second story, while three-part windows in elegantly bowed shingle frames light the overhanging gables.

One of the earliest examples of the Colonial Revival style in the district is provided by the **George A. Ward House, 305 Commonwealth Avenue** (1896). This cubic, 2 1/2 story dwelling is enclosed by a hip roof with hipped dormers on the side slopes and a gabled dormer with Palladian window on the front slope. The symmetrical five bay facade is centered on an entry with sidelights and elegantly detailed Tuscan porch with balustraded roof. The enfaming outer bays are gently swelled, and first story windows are headed by broad lintel shelves. A balustraded porch sets the house off from the the yard, while a picket fence with scalloped profile and arched gateway defines the corner lot.

Typical 20th century examples of the Colonial Revival style are provided by **393 Commonwealth Avenue** (1915, James Purdon, architect) and **739 Commonwealth Avenue** (1923, Harry Morton Ramsay, architect). The former is a two story brick structure enclosed by hip roof with modillions and three hip dormers. Its symmetrical three bay facade is centered on the entry with arched fanlight and attached columned porch. Quadrupled windows flank the entry and three paired windows are at the second story. Balustraded sunporches are appended to both side elevations. The later is a two

INVENTORY FORM CONTINUATION SHEET

MASSACHUSETTS HISTORICAL COMMISSION  
Office of the Secretary, Boston

Community: Newton (Newton Centre)	Form No: NC-B
Property Name: Commonwealth Avenue H.D.	

Indicate each item on inventory form which is being continued below.

Architectural Significance (cont.)

story brick structure enclosed by a gable roof with two hipped dormers. The symmetrical three bay facade is focused on a pedimented center pavilion that contains the entry which is detailed with side lights and an elliptical fan as well as a curved columned porch. The entry is headed by a three part window with a solid fan carved with urn and swags. The three part windows flanking the entry are similarly detailed. A balustraded sunporch and chimney rise along one side elevation. Formal brick residences such as these define much of the character of Commonwealth Avenue.

The Craftsman style is well represented by two adjacent houses at **603 and 607 Commonwealth Avenue** (1917, 1920). The former is a 1 1/2 story shingle bungalow enclosed by an overshoot gable roof which is pierced by a shed dormer with gabled end sections. The overshoot roof with exposed rafter ends is supported on heavy Tuscan columns and forms a recessed porch. The latter is a two story shiplap structure enclosed by a hip roof with exposed rafter ends and a central hip dormer. The offset entry has an elegant glazed porch with pergola roof. A bow window flanks the entry and pergola roof sunporch is attached to one side along with a chimney.

A good example of the Tudor Revival style is provided by **808 Commonwealth Avenue** (c1907). This 2 1/2 story house faces gable end to the street. It is clad with shingle at the first story, stucco at the second and fanciful half-timbering in the gable fields. Its offset entry has a projecting half-timbered porch. Wide bargeboards and a pinnacle trim the facade gable. Windows contain 8/8 sash. **386 Commonwealth Avenue** (1912, Coolidge and Carlson) provides an example of French influenced design. This stucco clad house rises two stories to an overhanging hip tile roof with exposed rafter ends. Its symmetrical three bay facade is focused on an oddly curving entry that reflects the fluidity of the Art Nouveau movement. The Spanish Colonial style is represented by a similarly massed house at **321 Commonwealth Avenue** (1922, John Barnard). It is a stuccoed two story house with a tile hipped roof. Its planar five bay facade is centered on an unadorned round arched entry which is flanked by full length round arched windows with multi-pane sash. A full two story wing with similar windows project from the south while a lower wing with a secondary entry is located to the north. The John H. Johnson House, 71 Commonwealth Avenue (c1915) is the finest example of this style in the city. Its fully developed features include Baroque facade gables, varied rooflines and ventilators with their own red tile roofs. The main facade is symmetrically designed with a recessed Tuscan entryway flanked by projecting pavilions that break through the roofline with curving Baroque gables. A glazed sunporch extends from the right elevation while an open pergola porch is located to the left. This stuccoed house with arched window openings is enclosed by a red tile roof.

Staple to Inventory form at bottom

INVENTORY FORM CONTINUATION SHEET

MASSACHUSETTS HISTORICAL COMMISSION  
Office of the Secretary, Boston

Community: Newton (Newton Centre)	Form No: NC-B
Property Name: Commonwealth Avenue H.D.	

Indicate each item on inventory form which is being continued below.

### Architectural Significance (cont.)

Commercial buildings in the area are represented by the Burns Real Estate Office at **242 Commonwealth Avenue** (1922), a cubic one story structure with stuccoed walls and a hip tile roof, and the two story Tudor Revival block at **626 Commonwealth Avenue** (1918) on the corner of Centre Street.

**Verbal Boundary Description and Justification:** The Commonwealth Avenue Historic District includes the eastern half of the roadway from Boston College on the east to Walnut Street on the west. Specifically, the boundaries follow the lot lines of the 188 properties on that section of road, on portions of Rice Street and Waban Hill Road, as shown on the attached Engineering Map. The boundaries recognize the influential role of Commonwealth Avenue on the development of central Newton, the picturesque qualities of the boulevard and the cohesive architectural character of the turn-of-the-century houses which line it. The eastern boundary has been drawn to exclude commercial and college buildings, while the western boundary excludes increasing numbers of modern houses. The concentration of earlier houses at the eastern end reflects the east-west development of Commonwealth Avenue after its opening in 1895. The district has been expanded from the Commonwealth Avenue corridor onto Rice Street and Waban Hill Road to include a small number of particularly well designed period houses.

### HISTORICAL SIGNIFICANCE (cont.)

Commonwealth Avenue in Brighton and Beacon Street in Brookline is clearly felt in the curving two lane roadway. Olmsted was aware of the Newton Boulevard, but the degree of his actual involvement, if any, is unknown. Construction began in 1894 and the Newton Boulevard, or Commonwealth Avenue as it soon came to be known, was opened on October 11, 1895.

Early development in areas abutting the Commonwealth Avenue Historic District included the Montvale Road area (designed in 1894 by Olmsted, Olmsted and Eliot) and Eastborne and Westborne Road, both before 1907. These were followed by Manet Road, Old Colony Road and the Bay State Development, as well as the beginnings of Boston College (1909: CH-B). Development in older areas of Chestnut Hill and Newton Centre was also stimulated, but fewer than twenty houses were actually built on Commonwealth Avenue between the Brighton line and Walnut Street before 1907. Development between 1907 and 1917 was brisk, particularly in the mid-teens, when over thirty new houses

INVENTORY FORM CONTINUATION SHEET

MASSACHUSETTS HISTORICAL COMMISSION  
Office of the Secretary, Boston

Community: Newton (Newton Centre)	Form No: NC_B
Property Name: Commonwealth Avenue H.D.	

Indicate each item on inventory form which is being continued below.

Historical Significance (cont.)

were built and development of property adjacent to Commonwealth Avenue on the north side also began to increase. Although some larger lots have been further subdivided over the years, building on the initial division of lots along Commonwealth Avenue to Walnut Street was virtually complete in the twenties. A newspaper article from the Newton Graphic, July 6, 1923, records what was said to be the sale of the last exclusive building lot on this section of Commonwealth Avenue. Purchase price for the land was 50 cents a foot.

The Shingle style house at **332 Commonwealth Avenue** (1895), one of the earliest and finest, was built by Frank A Schirmer, senior member of the firm of F. A. Schirmer & Co., bankers and brokers of Boston. Schirmer's house is on a prominent corner lot at the intersection of Wachusett Road and Hammond Street on the south side of Commonwealth Avenue. Across Commonwealth on the opposite corner Newton Boulevard Syndicate member Geroge Arthur Ward built a stylish Colonial Revival house, **305 Commonwealth Avenue (1896)**, with a matching fence to mark the corner. The large Neo-Classical houses, **85, 95 and 103 Commonwealth Avenue** were built 1900-01, also by well-to-do businessmen. Although there were more modest homes on Commonwealth Avenue, these important houses set the style and tone for later development.

There are no building permits to document the architects for nineteenth century buildings and few if any for twentieth century buildings built before 1915. Documentation for later buildings is somewhat better. Individual architects are known for the following houses: **282 Commonwealth Avenue** (1920) Clifford Allbright, **393 Commonwealth Avenue** (1916) James Purdon, **321 Commonwealth Avenue** (1921) John Barnard, **386 Commonwealth Avenue** (1912) Coolidge and Carlson, **373 Commonwealth Avenue** (1915) C. J. Bateman, and **423 Commonwealth Avenue** (1925) Edward B. Stratton. The work of the most prolific architect of the early twentieth century in Newton, Harry Morton Ramsay, is better documented and he is responsible for the greatest number of houses on Commonwealth Avenue. Houses at **151, 175, 182, 412, 436, 450, 496, 603, 607, 716, 739, 742, 781, 784, 789, 819, 868 Commonwealth Avenue** are all known to be by Ramsay and others are possible but not confirmed by building permits. All were built within the first three decades of the twentieth century. Ramsay worked in a range of styles, Craftsman, Colonial Revival and Tudor Revival, but the Colonial Revival houses, often in brick, are typical on Commonwealth Avenue.

Stable to Inventory form at bottom

INVENTORY FORM CONTINUATION SHEET

MASSACHUSETTS HISTORICAL COMMISSION  
Office of the Secretary, Boston

Community: Newton (Newton Centre)	Form No: NC-B
Property Name: Commonwealth Avenue H.D.	

Indicate each item on inventory form which is being continued below.

Historical Significance (cont.)

Little is known about Harry Morton Ramsay (1886-1962), who was first listed in the Boston Directory in 1909. He moved to Newton in 1923, taking up residence at 18 Nathan Road, just off Commonwealth Avenue near the intersection of Centre Street. (At least ten houses on Nathan Road, including his own, were also designed by him.) When he died in 1962 there was no mention in the paper of his long career. Ramsay's wife, Grace E. Moore, who is said to have worked with him, died in 1967 and again there was no mention of their work. Houses designed by Ramsay can be found in all of the subdivisions along Commonwealth Avenue, particularly in the Bay State Development, and in many others throughout Newton, such as Homestead Road in Waban where he designed all the houses, this time in the Tudor Revival style. Individual houses, such as 44 Bullough Park in Newtonville and 240 Windsor Road in Waban (W-L) are also of interest.]

Both commercial and apartment development on Commonwealth Avenue are limited. Two apartment houses were built in Chestnut Hill before 1907, but there was a general dislike for apartments among Newton residents, and there was no further construction of multi-story apartment buildings along Commonwealth Avenue until recent years. The few commercial buildings that exist were all constructed between 1914 and 1922, before passage of the zoning ordinance in December 1922. Near Centre Street, **555**

**Commonwealth Avenue** was designed by architect Edward B. Stratton and built in 1914. Its original owners, the Vitalait Laboratories of New England, were bacteriologists. Subsequent owners included James Gibson Real Estate (picture Newton Directory 1929) and several other real estate companies. A one story block was built at **543-551**

**Commonwealth Avenue** (F. A. Norcross, architect) in 1916 and two, one story blocks, one at **554-564** and one at **624-628** (Harry Morton Ramsay, architect), were built in 1918. A two story block at **630-634 Commonwealth Avenue** (adjacent to the block at 624-628), designed by Edward B Stratton and built in 1921, marked the corner of Commonwealth Avenue and Centre Street. These small blocks have housed a variety of small convenience shops such as hairdressers, food stores, drug stores etc. In Chestnut Hill, at the corner of Manet Road, John T. Burns established an office at **242**

**Commonwealth Avenue**. Built in 1922, it was designed by Boston architect Thomas Byrd Epps. The Burns office, which is still in business, played an important role in the early 20th century development of Newton.

INVENTORY FORM CONTINUATION SHEET

MASSACHUSETTS HISTORICAL COMMISSION  
Office of the Secretary, Boston

Community: Newton (Newton Centre)	Form No: NC-B
Property Name: Commonwealth Avenue H. D.	

Indicate each item on inventory form which is being continued below.

Historical Significance (cont.)

With the exception of this small commercial area located at the intersection of Commonwealth Avenue and Centre Street and the Boston College Campus at the eastern end in Chestnut Hill, Commonwealth Avenue remains generally residential, with single family houses predominating. The impressive turn-of-the century and early twentieth century houses have in some places been interspersed by a ranches, split-levels or capes, but very little has been built since the middle of the 20th century. Large turn-of-the century houses and Colonial Revival houses, most often in brick, set the style and leave a lasting impression of the Commonwealth Avenue Historic District.

**BIBLIOGRAPHY/REFERENCES**

Building Department Records, Commonwealth Avenue  
City Directories and Atlases  
*Newton's 19th Century Architecture: Newton, Oak Hill, Chestnut Hill, and Commonwealth Avenue*  
*Beautiful Newton, Newton War Memorial*  
Newton Graphic, 6 July 1923

Staple to Inventory form at bottom

NEWTON, MASS. MULTIPLE RESOURCE AMENDMENT - 1988 - COMMONWEALTH AVENUE HISTORIC DISTRICT

<u>Street Address</u>	<u>SBL</u>	<u>Area(s)</u>	<u>Historic Name</u>	<u>Form #</u>	<u>Date</u>	<u>Style</u>	<u>Status</u>
	73-40-23	15555	Vacant Lot				
	64-41-1	8500	Vacant Lot				
	63-13-17	9586	Vacant Lot				
	61-13-10	4812	Vacant Lot				
	61-11-2	6759	Vacant Lot				
	61-13-6	8976	Vacant Lot				
112 Bullough Park	24-41-14	12688	house w/attached garage		1924	CR	c
93 Cedar St.	64-36-1	18371	house garage	NC-114	1865	Mansard	c nc
1045 Centre St.	13-34-6	9815	house w/attached garage		1935	Tudor	c
1074 Centre St.	61-30-1	15634	house garage	NC-610	1884	QA	c c
15 Chestnut Ter.	61-2-1	40051	Newton Tennis Club Tennis Courts		1895	CR	c c
53 Commonwealth Ave.	63-1-12	51965	house outbuilding		1913	Craftsman	c c
71 Commonwealth Ave.	63-1-13	32986	house pool/cabana outbuilding garage	CH-011	1910	Sp. Col.	c nc nc c
85 Commonwealth Ave.	63-8-44	24265	Moses H. Gulesian House arbor	CH-24A	1900	Neo-classical	c c
95 Commonwealth Ave.	63-8-45	13000	Agustus Foucar House	CH-25	1901	Neo-classical	c
103 Commonwealth Ave.	63-8-46	13693	Philip Hartley House garage	CH-26	1901	Neo-Classical	c nc
109 Commonwealth Ave.	63-8-47	7825	house garage	CH-27	1907	Craftsman	c c
115 Commonwealth Ave.	63-8-48	10140	house garage		c1920	CR/Crafts.	c nc

NEWTON, MASS. MULTIPLE RESOURCE AMENDMENT - 1988 - COMMONWEALTH AVENUE HISTORIC DISTRICT

119	Commonwealth Ave.	63-8-49	11986	house garage		1916	CR	c
127	Commonwealth Ave.	63-8-50	12014	house w/att garage		1915	CR	c
137	Commonwealth Ave.	63-8-51	12014	house garage		c1925	CR	c
143	Commonwealth Ave.	63-8-52	10162	house garage		1925	Tudor	c
151	Commonwealth Ave.	63-8-53	10165	house w/attached garage		1937	CR	c
159	Commonwealth Ave.	63-8-27	7269	house w/att garage		1935	Garrison Col.	c
175	Commonwealth Ave.	63-8-25	8430	Aquino Memorial Foundation garage		1920	CR	c
176	Commonwealth Ave.	63-13-16	8598	house garage		1917	Craftsman	c
182	Commonwealth Ave.	63-13-15	8154	house garage		1917	CR	c
185	Commonwealth Ave.	63-8-24	5132	house w/attached garage		1929	Tudor	c
188	Commonwealth Ave.	63-13-14	8613	house		1917	CR	c
191	Commonwealth Ave.	63-8-23	11196	house w/attached garage		1923	CR	c
194	Commonwealth Ave.	63-13-13	13083	house garage		1919	Craftsman	c
197	Commonwealth Ave.	63-8-22	13355	house w/attached garage		1955	CR	nc
200	Commonwealth Ave.	63-13-12	10886	house		1923	Craftsman	c
209	Commonwealth Ave.	63-8-20	20338	Appartment Block		1969	Modern	nc
214	Commonwealth Ave.	61-12-13	10097	house garage		1926	Craftsman	c
219	Commonwealth Ave.	63-8-19	10347	The Chestnut Hill	CH-28	1899	Tudor	c
226	Commonwealth Ave.	61-12-12	6978	house		1927	CR	c
233 -5	Commonwealth Ave.	61-11-1	7191	house w/att garage		1918	Craftsman	c
242	Commonwealth Ave.	61-13-11	7452	Burns Real Estate		1924	Sp. Col.	c
249	Commonwealth Ave.	61-11-3	6128	house		1916	CR	c
254	Commonwealth Ave.	61-13-9	6330	house	CH-30	1894	CR	c

**NEWTON, MASS. MULTIPLE RESOURCE AMENDMENT - 1988 - COMMONWEALTH AVENUE HISTORIC DISTRICT**

255	Commonwealth Ave.	61-11-4	8560	house outbuilding		1916	CR	c nc
260	Commonwealth Ave.	61-13-8	7488	house garage	CH-31	1903	CR	c nc
261	Commonwealth Ave.	61-11-5	8131	house garage		1916	Craftsman	c c
266	Commonwealth Ave.	61-13-7	7688	house garage	CH-32	1902	CR	c c
267	Commonwealth Ave.	61-11-6	10000	house garage		1916	Craftsman	c c
279	Commonwealth Ave.	61-10-11	12260	house garage		1915	Craftsman	c c
282	Commonwealth Ave.	61-13-5	14300	house garage		1921	CR	c c
287	Commonwealth Ave.	61-10-12	10120	house outbuilding		c1950	Ranch	nc nc
294	Commonwealth Ave.	61-14-5	12134	house garage		1921	Craftsman	c c
295	Commonwealth Ave.	61-10-13	12550	Frank Robinson House	CH-33	1897	QA	c
300	Commonwealth Ave.	61-14-4	20199	house garage	CH-34	1897	QA	c c
305	Commonwealth Ave.	61-10-1	12000	George A. Ward House garage fence	CH-35	1898	CR	c c c
310	Commonwealth Ave.	61-14-3	16105	house garage		1914	CR/Crafts.	c c
321	Commonwealth Ave.	61-9-5	27167	house w/attached garage		1921	Sp. Col.	c
332	Commonwealth Ave.	61-8-5	34561	Frank Schirmer House	CH-36	1895	QA	c
333	Commonwealth Ave.	61-9-6	26369	house w/attached garage fence		1915	CR	c c

## NEWTON, MASS. MULTIPLE RESOURCE AMENDMENT - 1988 - COMMONWEALTH AVENUE HISTORIC DISTRICT

336	Commonwealth Ave.	61-8-4	18000	house		1940	Ranch	no
340	Commonwealth Ave.	61-8-3	16046	house w/attached garage		1929	CR	c
341	Commonwealth Ave.	61-9-7	12862	house garage		1914	CR	c c
349	Commonwealth Ave.	61-9-8	27548	house outbuilding		1916	Sp. Col.	c no
360	Commonwealth Ave.	61-8-2	19950	house		1911	Craftsman	c
361	Commonwealth Ave.	61-9-9	21770	house Carriage House	CH-37	1896	QA/Shingle	c c
372	Commonwealth Ave.	61-8-1A	17334	house w/attached garage		1983	Modern	no
373	Commonwealth Ave.	73-39-16	27248	house garage pool/cabana		1915	Sp. Col.	c c no
386	Commonwealth Ave.	61-8-1	32232	house garage Garden Stairs Greenhouse ruin		1912	French/AN	c c c no
393	Commonwealth Ave.	73-39-1	30372	house garage		1916	CR	c c
405	Commonwealth Ave.	73-40-22	18000	house garage		1916	CR	c c
412	Commonwealth Ave.	61-5-14	12906	house garage		1916	Craftsman	c c
418	Commonwealth Ave.	61-5-13	12886	house garage		1916	CR	c c
423	Commonwealth Ave.	73-40-1	15678	house garage pool		1925	CR	c c no
424	Commonwealth Ave.	61-5-12	12751	house		1916	Craftsman	c

**NEWTON, MASS. MULTIPLE RESOURCE AMENDMENT - 1988 - COMMONWEALTH AVENUE HISTORIC DISTRICT**

				garage					c
430	Commonwealth Ave.	61-5-11	12570	house garage		1916	CR		c c
436	Commonwealth Ave.	61-5-10	12381	house garage		1917	Tudor		c c
439	Commonwealth Ave.	73-41-24	15859	house garage		1928	CR		c c
449	Commonwealth Ave.	73-41-1	22551	house garage		1922	CR		c c
450	Commonwealth Ave.	61-5-9	25758	house garage		1920	CR		c c
460	Commonwealth Ave.	61-5-8	16189	house	NC-173	1897	QA/CR		c
470	Commonwealth Ave.	61-5-6	12360	house garage		1936	CR		c c
496	Commonwealth Ave.	61-3-37	7045	house w/attached garage		1911	Dutch Col.		c
504	Commonwealth Ave.	61-3-36	5558	house garage		1923	Craftsman		c nc
516	Commonwealth Ave.	61-3-35	8331	house garage	NC-174	1897	CR		c nc
517	Commonwealth Ave.	73-45-13	11191	house garage		1900	QA		c c
518	Commonwealth Ave.	61-3-34	9000	house garage	NC-175	1896	CR		c nc
520 -22	Commonwealth Ave.	61-3-30	7130	house garage		1923	Craftsman		c c
521	Commonwealth Ave.	73-45-14	5863	house garage		1923	Craftsman		c nc
524 -526	Commonwealth Ave.	61-3-29	7766	house garage		1924	CR		c c

NEWTON, MASS. MULTIPLE RESOURCE AMENDMENT - 1988 - COMMONWEALTH AVENUE HISTORIC DISTRICT

527	Commonwealth Ave.	73-45-15	6849	house garage		1927	Craftsman	c nc
528 -30	Commonwealth Ave.	61-3-28	10725	house garage garage		1923	Craftsman	c nc c
533 -35	Commonwealth Ave.	73-45-16	9911	house garage	NC-176	1896	CR	c nc
534 -36	Commonwealth Ave.	61-3-27	10040	house garage		1929	CR	c c
538 -40	Commonwealth Ave.	61-3-26	10456	house w/attached garage		1954	CR	nc
539 -41	Commonwealth Ave.	73-45-18	3743	house outbuilding		1984	Modern	nc nc
542	Commonwealth Ave.	61-3-25	6761	house w/attached garage		1939	CR	nc
543 -549	Commonwealth Ave.	73-45-19	5585	Stores		1916	Commercial	c
546	Commonwealth Ave.	61-3-24	7471	house		1939	CR	nc
548 -550	Commonwealth Ave.	61-3-23	6890	house w/attached garage		1939	CR	nc
552 -64	Commonwealth Ave.	61-3-22	13000	Commercial Block		1917	Commercial	c
555	Commonwealth Ave.	73-48-10	6790	Vitalait Laboratory		1914	Sp. Col.	c
565 -67	Commonwealth Ave.	73-48-12	7150	house outbuilding	NC-177	1886	QA	c nc
569 -71	Commonwealth Ave.	73-48-13	9510	house garage		1926	CR	c c
577 -79	Commonwealth Ave.	73-48-14	9750	house garage		1926	CR	c c
583 -85	Commonwealth Ave.	73-48-15	9900	house garage		1926	CR	c c
599	Commonwealth Ave.	73-50-5	5408	house Fence		1916	Craftsman	c c
603	Commonwealth Ave.	73-50-6	6034	house garage		1917	Craftsman	c c

NEWTON, MASS. MULTIPLE RESOURCE AMENDMENT - 1988 - COMMONWEALTH AVENUE HISTORIC DISTRICT

607	Commonwealth Ave.	73-50-7	6008	house garage		1917	Craftsman	c
615	Commonwealth Ave.	73-50-8	11132	house w/attached garage		1934	Garrison	c
624 -628	Commonwealth Ave.	61-1-5	3164	Commercial Block		1918	Commercial	c
629	Commonwealth Ave.	73-50-9	17100	house		1891	QA	c
630 -38	Commonwealth Ave.	61-1-6	4347	Commercial Block		1921	Commercial	c
647	Commonwealth Ave.	13-34-7	27236	house formerly 11 Grafton St.	NC-292A	c.1855	Italianate	c
650	Commonwealth Ave.	64-41-2	22890	house outbuilding outbuilding		1886	Shingle	c nc nc
661	Commonwealth Ave.	13-34-8	36748	house formerly 19 Grafton St. outbuilding	NC-179	1866	Mansard	c c
667	Commonwealth Ave.	13-34-9	10011	house w/attached garage		1963	Ranch	nc
683	Commonwealth Ave.	13-34-10	15225	house garage		c.1920	CR	c nc
684	Commonwealth Ave.	64-39-3	5320	house		c1920	Renovated	nc
692	Commonwealth Ave.	64-39-2	9492	house garage	NC-180	1896	CR	c c
693	Commonwealth Ave.	13-33-6	7211	house garage		1914	CR	c nc
700	Commonwealth Ave.	64-39-1	7669	house	NC-181	1898	QA	c
707	Commonwealth Ave.	13-33-7	11138	house garage		1912	Dutch/Crafts.	c c
710	Commonwealth Ave.	64-38-8	12070	house garage		1919	Dutch Col.	c nc
715	Commonwealth Ave.	13-33-8	9092	house garage		1919	CR	c c
716	Commonwealth Ave.	64-38-7	13345	house garage		1919	CR	c c
724	Commonwealth Ave.	64-38-6	11958	house		1919	CR	c

**NEWTON, MASS. MULTIPLE RESOURCE AMENDMENT - 1988 - COMMONWEALTH AVENUE HISTORIC DISTRICT**

				garage					
725	Commonwealth Ave.	13-33-1	12790	house garage		1922	Dutch Col.		c
739	Commonwealth Ave.	13-32-26	13542	house garage		1923	CR		c
742	Commonwealth Ave.	64-37-6	16917	house garage		1923	CR		c
				fence					c
750	Commonwealth Ave.	64-37-5	12544	house garage		1920	CR		c
758	Commonwealth Ave.	64-37-4	13300	house garage		c1930	Tudor		c
766	Commonwealth Ave.	64-37-3	13120	house garage		1926	Classical		c
767	Commonwealth Ave.	13-30-15	13420	house	NC-182	1895	QA		c
774	Commonwealth Ave.	64-37-2	11800	house garage		1926	CR		c
775	Commonwealth Ave.	13-30-16	15190	house garage	NC-183	1900	CR		c
781	Commonwealth Ave.	13-30-17	14576	house garage		1923	Tudor		c
784	Commonwealth Ave.	64-37-1	12400	house garage		1925	Tudor		c
				pool					nc
789	Commonwealth Ave.	13-30-1	11580	house garage		1924	CR		c
799	Commonwealth Ave.	13-29-9	10210	house garage		1916	Craftsman		c
805	Commonwealth Ave.	13-29-10	17130	house	NC-184	1900	Colonial		c

NEWTON, MASS. MULTIPLE RESOURCE AMENDMENT - 1988 - COMMONWEALTH AVENUE HISTORIC DISTRICT

				garage					
808	Commonwealth Ave.	64-36-16	21540	house garage	NC-185	1900	Tudor		c c
811	Commonwealth Ave.	13-29-11	16690	house w/attached garage		1946	Tudor		nc
816	Commonwealth Ave.	64-36-15	14840	house garage		1921	Renovated		nc nc
819	Commonwealth Ave.	13-29-12	16680	house garage		1924	Craftsman		c nc
				pool					nc
822	Commonwealth Ave.	64-36-14	10277	house garage		1924	CR		c c
825	Commonwealth Ave.	13-29-13	17070	house w/attached garage		1951	Ranch		nc
830	Commonwealth Ave.	64-36-13	9357	house w/attached garage		1922	Dutch Col.		c
833	Commonwealth Ave.	13-29-14	11409	house garage	NC-186	1897	QA		c nc
841	Commonwealth Ave.	24-43-23	9000	house		1913	CR		c
842	Commonwealth Ave.	64-21-3	11539	house garage		1923	CR		c c
849	Commonwealth Ave.	24-43-24	9395	house garage		1917	Dutch Col.		c nc
850	Commonwealth Ave.	64-21-2	9240	house garage		1923	CR		c nc
855	Commonwealth Ave.	24-43-25	9649	house outbuilding		1916	Craftsman		c nc
856	Commonwealth Ave.	64-21-1	10240	house garage		1922	Dutch Col.		c nc
861	Commonwealth Ave.	24-43-26	9607	house garage pool		1913	Craftsman		c c nc

NEWTON, MASS. MULTIPLE RESOURCE AMENDMENT - 1988 - COMMONWEALTH AVENUE HISTORIC DISTRICT

863	Commonwealth Ave.	24-43-27	10813	house garage	1913	CR	c nc
868	Commonwealth Ave.	64-20-18	11890	house	1921	CR	c
874	Commonwealth Ave.	64-20-17	19770	house w/ attached garage greenhouse	1919	Tudor	c nc
877	Commonwealth Ave.	24-43-4	10496	house garage	1923	Craftsman	c nc
882	Commonwealth Ave.	64-20-16	13680	house garage	1919	CR	c nc
887	Commonwealth Ave.	24-43-5	8300	house garage fence	1920	Dutch Col.	c c c
894	Commonwealth Ave.	64-9-8	12850	house garage	1921	CR	c c
895	Commonwealth Ave.	24-43-6	9135	house garage	1919	CR	c c
902	Commonwealth Ave.	64-9-7	9700	house garage	1921	Craftsman	c c
905	Commonwealth Ave.	24-42-6	8400	house	1924	CR	c
910	Commonwealth Ave.	64-9-6	11250	house garage	1921	CR	c c
911	Commonwealth Ave.	24-42-7	9159	house garage	1924	CR	c nc
917	Commonwealth Ave.	24-42-8	9404	house garage	1920	Craftsman	c c
918	Commonwealth Ave.	64-9-5	11450	house w/attached garage	1922	Dutch Col.	c
926	Commonwealth Ave.	64-9-4	11350	house garage	1922	CR/Crafts.	c c
929	Commonwealth Ave.	24-42-9	9520	house garage	c1920	CR	c c

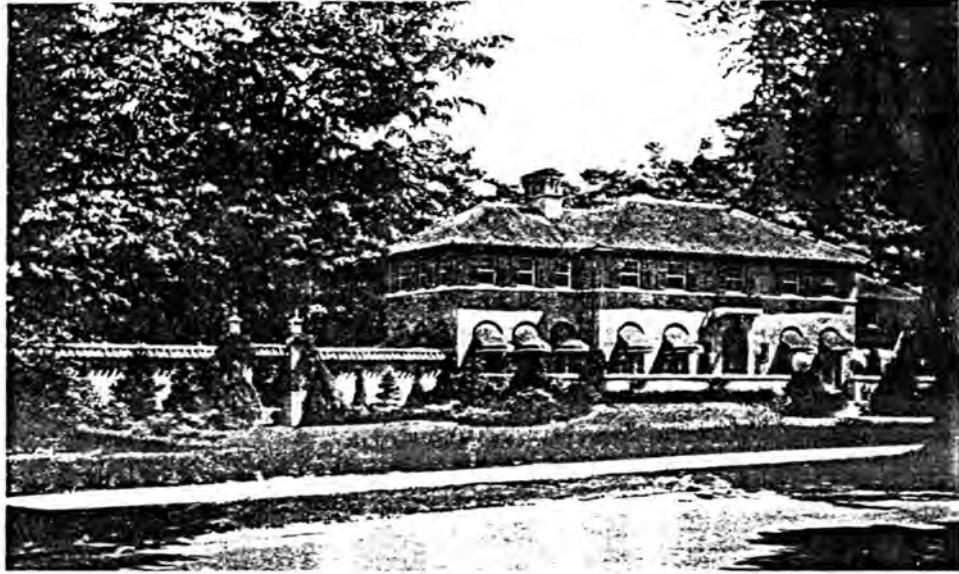
NEWTON, MASS. MULTIPLE RESOURCE AMENDMENT - 1988 - COMMONWEALTH AVENUE HISTORIC DISTRICT

934	Commonwealth Ave.	64-9-3	10900	house garage		1922	CR	c
Dep 01								c
935	Commonwealth Ave.	24-41-12	9122	house w/attached garage		1958	Ranch	nc
940	Commonwealth Ave.	64-9-2	9350	house w/attached garage		1925	CR	c
943	Commonwealth Ave.	24-41-13	10592	house		1927	CR	c
950	Commonwealth Ave.	64-9-1	9575	house garage		1922	Dutch Col.	c
44	Grafton St.	64-40-1	15089	house		1917	CR	c
47	Grafton St.	64-39-4	8750	house		1909	Craftsman	c
92	Grant Ave.	61-5-5	11161	house	NC-294	1896	CR	c
98	Grant Ave.	61-5-4	9616	house garage	NC-295	1896	QA	c
65	Hammond St.	61-15-6	18851	house		1938	CR	c
87	Hobart Rd.	61-5-15	14256	house		1939	Tudor	c
75	Prentice Rd.	73-41-23	15390	house		1928	Tudor	c
11	Rice St.	61-1-2	8322	house w/attached garage	NC-606	1887	QA	c
14	Rice St.	61-30-4	9343	house garage	NC-605	1896	CR	c
15	Rice St.	61-1-3	7253	house	NC-604	1888	QA/Shingle	c
20	Rice St.	61-30-3	10200	house	NC-607	1907	QA	c
21	Rice St.	61-1-4	10084	house garage		1890	QA	c
26	Rice St.	61-30-2	8559	house garage	NC-609	1896	QA/CR	c
63	Sumner St.	61-1-1	9032	house	NC-640	1895	CR	c
64	Sumner St.	61-2-14	12331	house pool		1912	CR	c
14	Waban Hill Rd.	63-2-8	10227	house		1904	QA	c
19	Waban Hill Rd.	63-2-7	8403	house		1896	Shingle	c
59 -61	Westbourne Rd.	73-45-12	12555	house garage	NC-725	1897	QA	c

NEWTON, MASS. MULTIPLE RESOURCE AMENDMENT - 1988 - COMMONWEALTH AVENUE HISTORIC DISTRICT

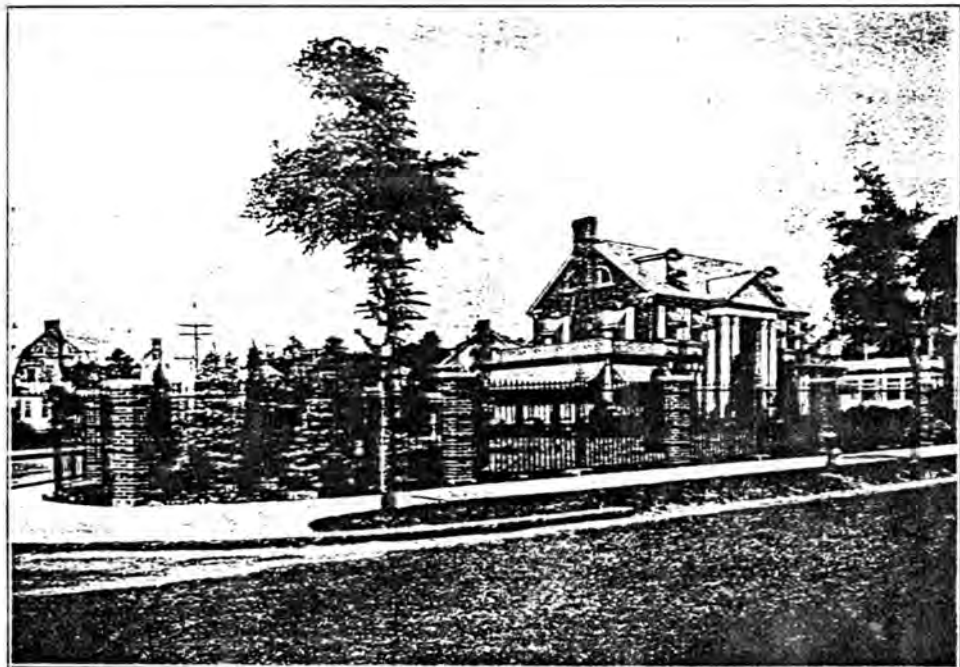
Number of buildings	186	Sum of square feet in field "area"	
Number of contributing buildings	170	(Streets not included)	2433615
Number of non-contributing buildings	16		
Number of structures	128	Number of vacant lots	6
Number of contributing structures	89		
Number of non-contributing structures	46		
Number of contributing objects	7		

PHOTOGRAPH FROM NEWTON WAR MEMORIAL NEWTON GRAPHIC PUBLISHING CO., NEWTON, MASS., n.d.



WILLIAM J. KENNEDY  
THREE TWENTY ONE COMMONWEALTH AVENUE CHESTNUT HILL

PHOTOGRAPH FROM NEWTON WAR MEMORIAL, NEWTON GRAPHIC PUBLISHING CO., NEWTON, MASS. n.d.



CHARLES D. WEATHERS  
SEVEN FORTY TWO COMMONWEALTH AVENUE NEWTON CENTRE

PHOTOGRAPH FROM NEWTON WAR MEMORIAL, NEWTON GRAPHIC PUBLISHING CO., NEWTON, MASS. n.d.



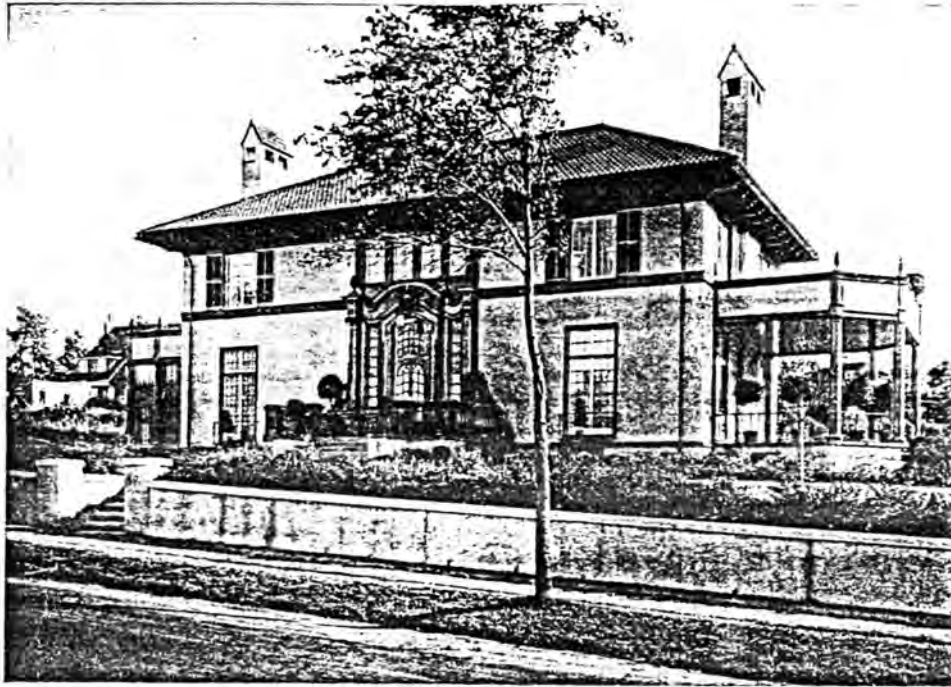
CHARLES E. JEFFREY, Jr.  
SEVEN TWENTY FIVE COMMONWEALTH AVENUE NEWTON CENTRE

PHOTOGRAPH FROM NEWTON WAR MEMORIAL, NEWTON GRAPHIC PUBLISHING CO., NEWTON, MASS. n.d.

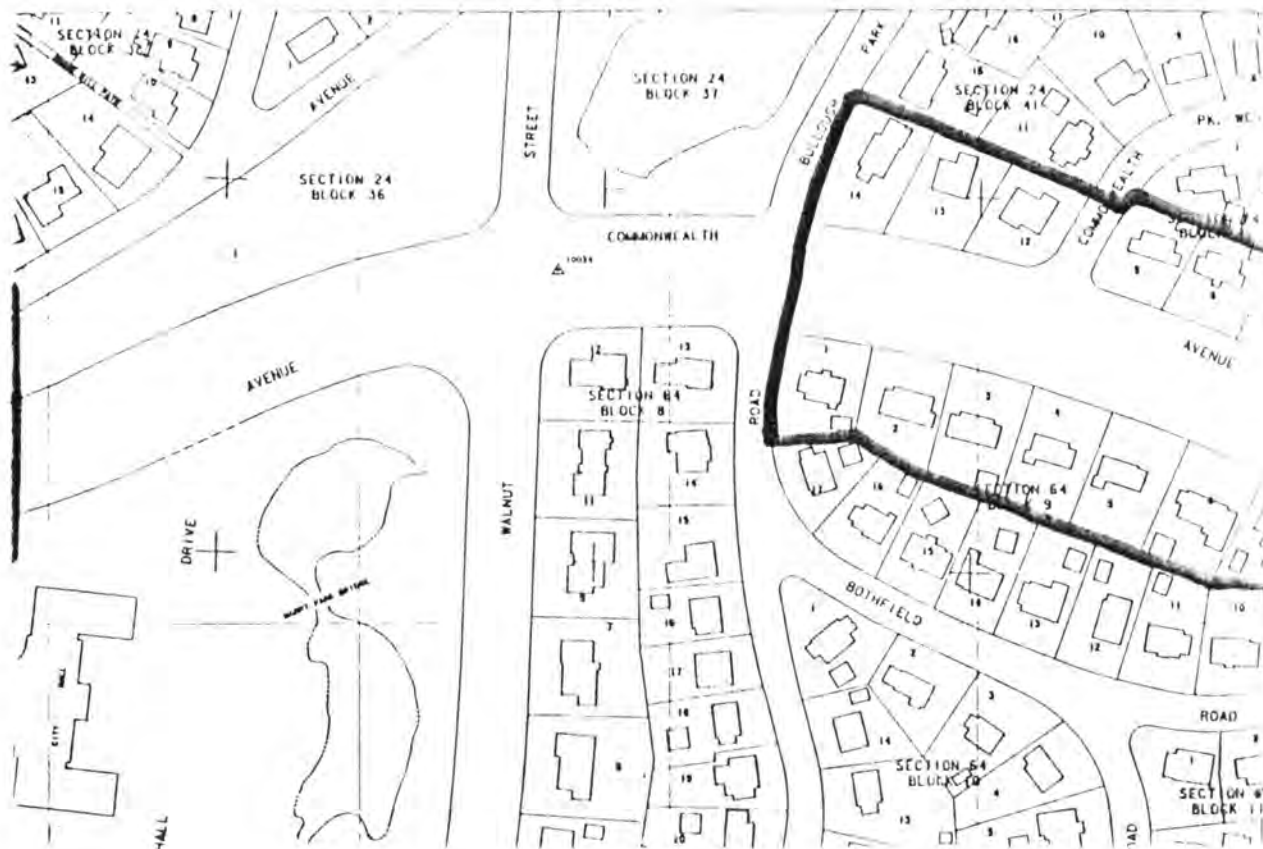


WILLIAM F. DAVIS  
SEVEN EIGHTY NINE COMMONWEALTH AVENUE NEWTON CENTRE

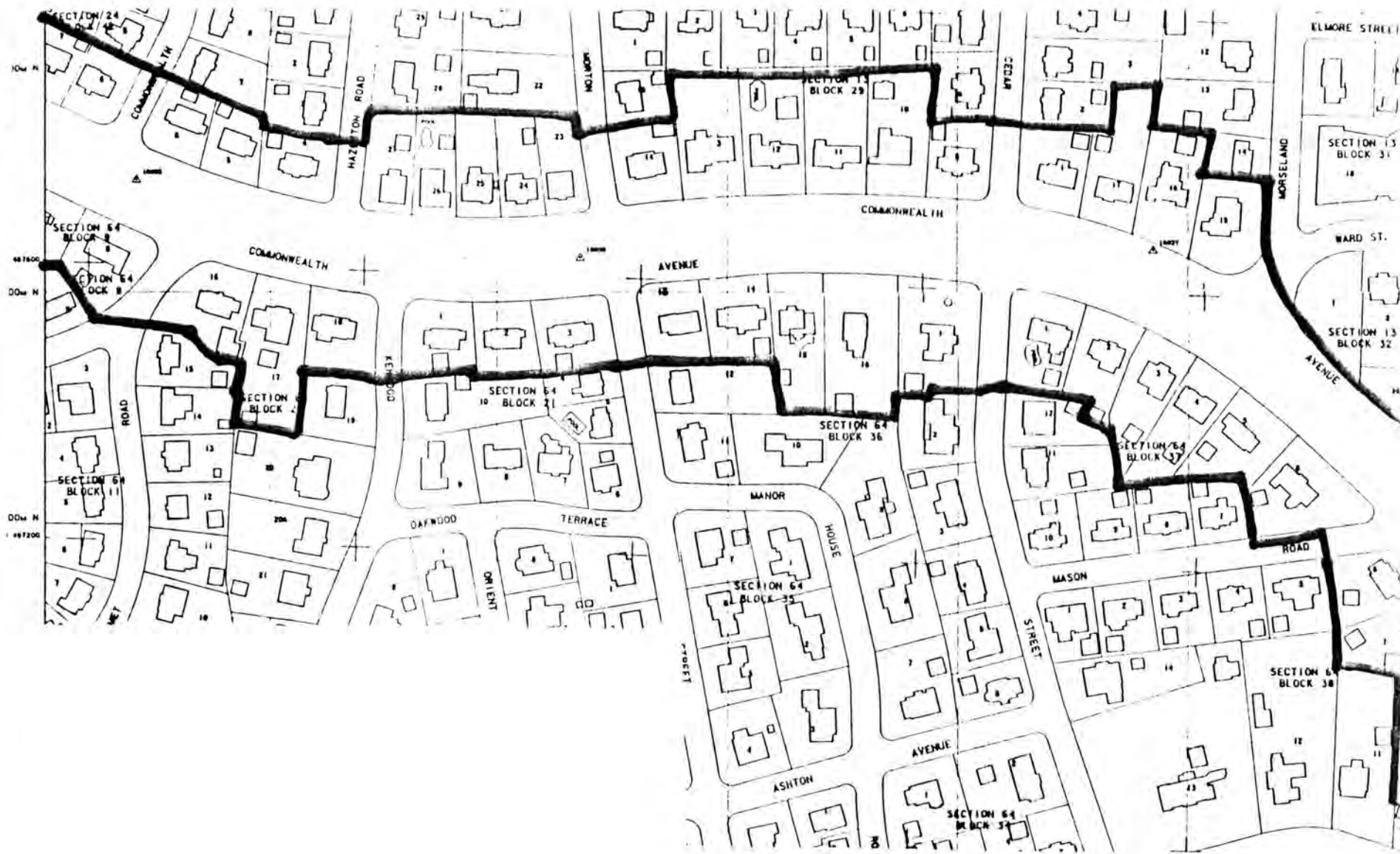
NEWTON, MASS. - MRA : PHOTOGRAPH FROM BEAUTIFUL NEWTON, NEWTON  
GRAPHIC PUBLISHING CO., NEWTON, MASS., n.d.



RESIDENCE OF JAMES BROWN, COMMONWEALTH AVENUE, NEWTON CENTRE



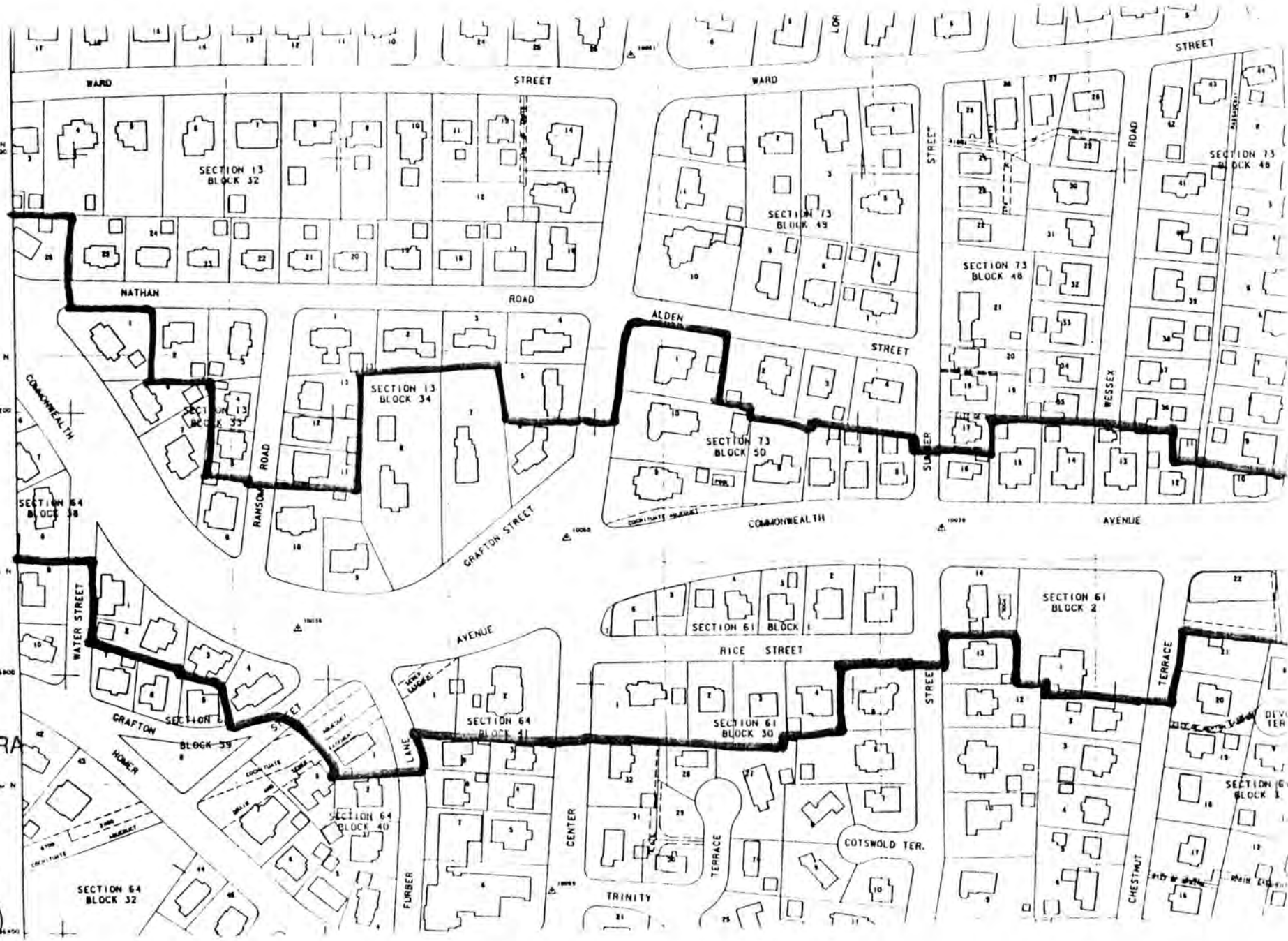
Newton, MA-MRA  
Commonwealth Avenue Historic  
District  
Engineering Map 1979  
Scale: 1"=1000" Reduced 64 %  
Page: 72, 73, 74, 75, 76, 77



Newton, MA-MRA

Comm. Ave. H.D.

Page 2 of 6 (Map page #73)

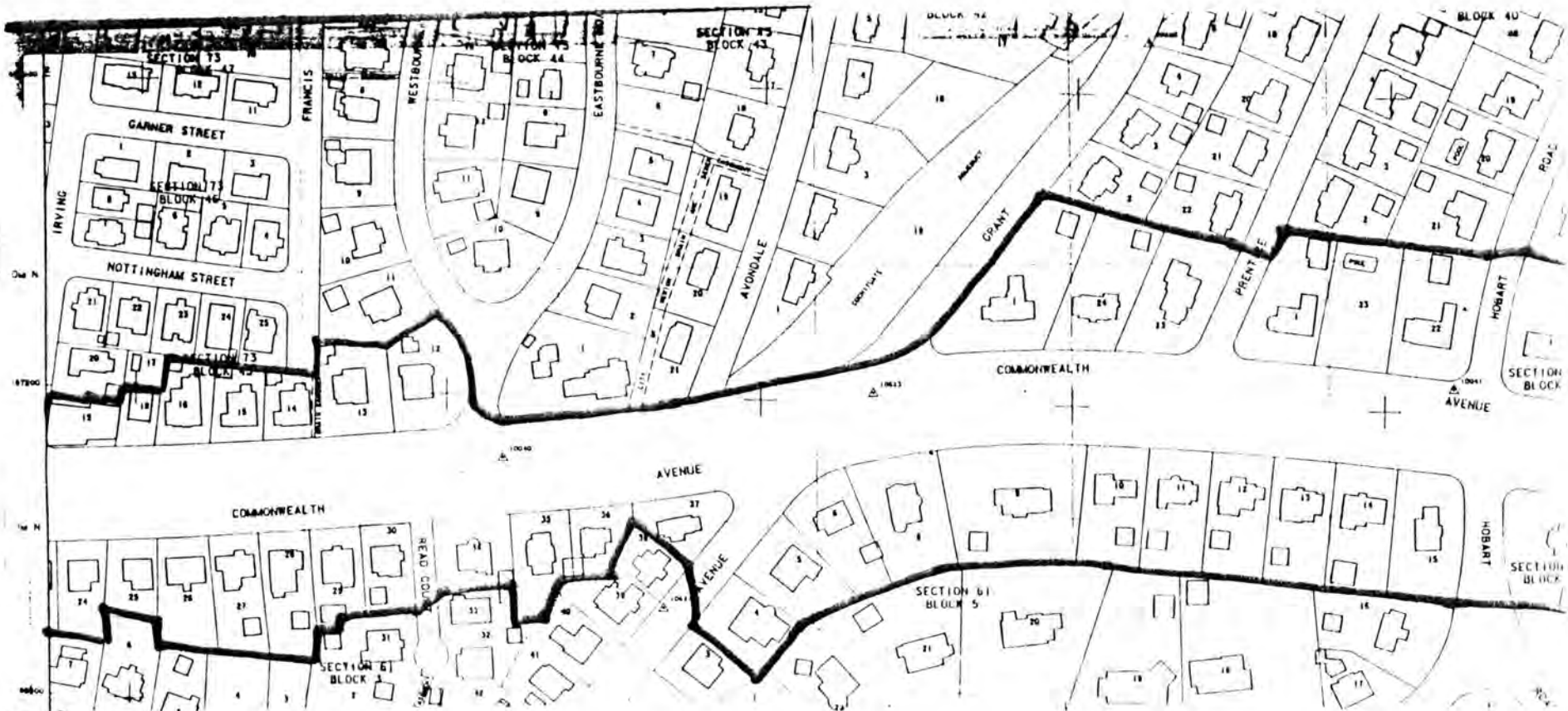


Newton, MA-MRA

Comm. Ave.  
H.D.

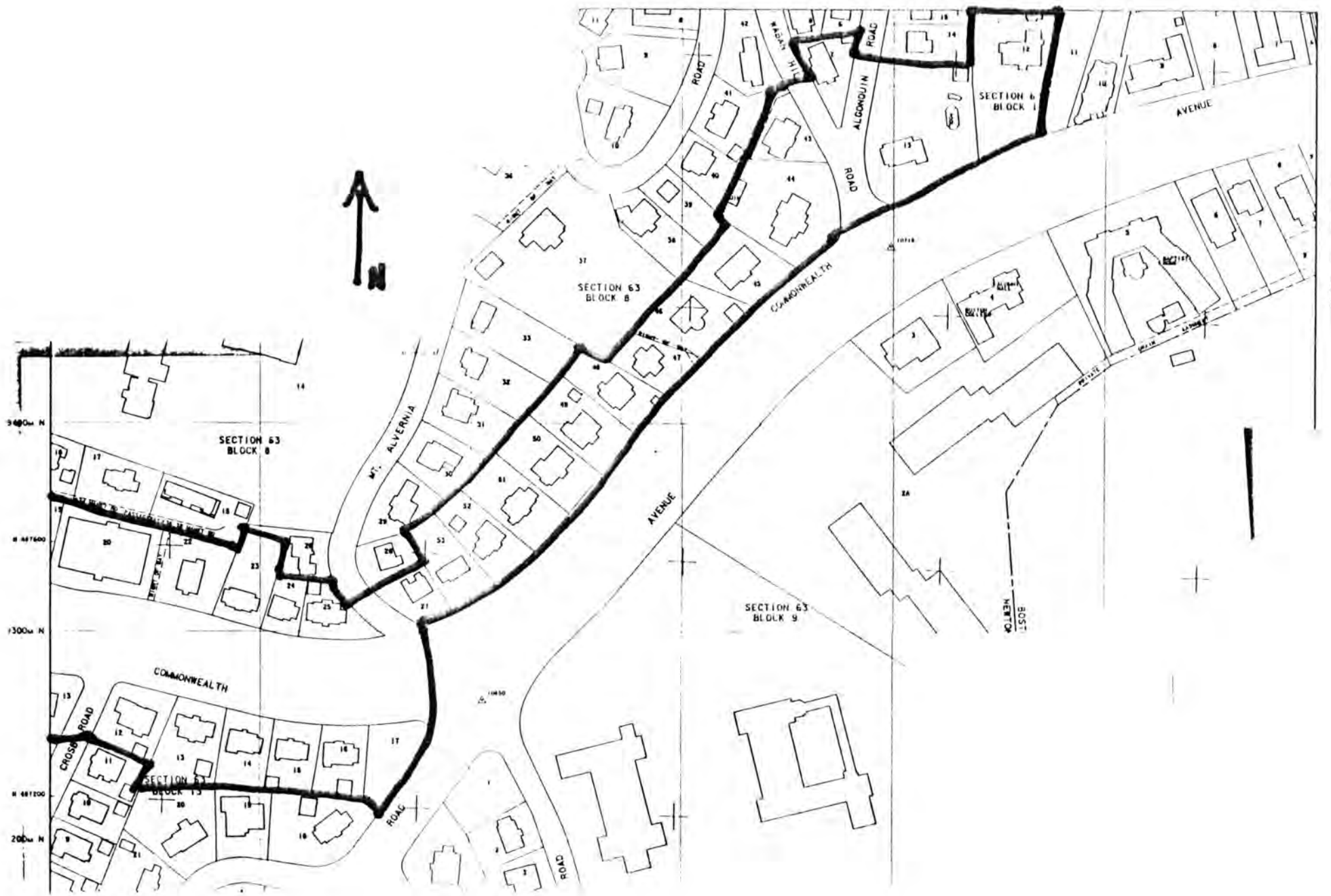
Page 3 of 6

(Map page #14)



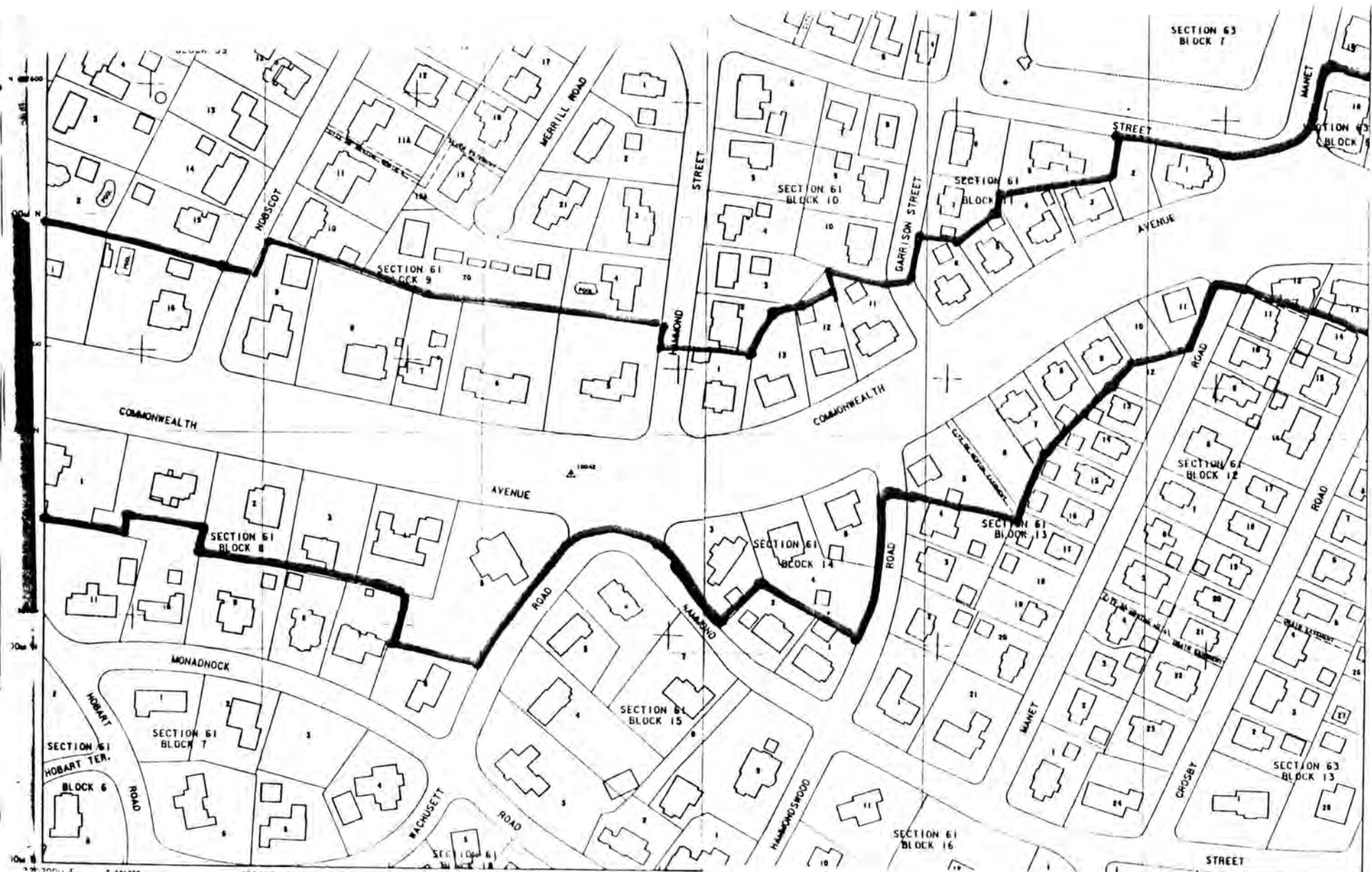
Jewton, MA-MRA

Comm. Ave. H.D.  
Page 4 of 4 (Mappage #75)



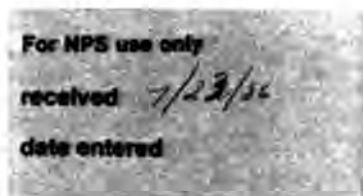
Newton, MA-MRA

Comm. Ave. H.D.  
 Page 6 of 6 (Map page #77)



United States Department of the Interior  
National Park Service

National Register of Historic Places  
Inventory—Nomination Form



Continuation sheet

Item number

Page

Multiple Resource Area  
Thematic Group

Name Newton MRA  
State Middlesex County, MA

Nomination/Type of Review

Date/Signature

121. Whittemore's Tavern--  
Bourne House

Entered in the  
National Register

for Keeper

Melrose Byers 9/4/86

Attest

122. Working Boys Home

Entered in the  
National Register

for Keeper

Melrose Byers 9/4/86

Attest

123. Brae-Burn Historic District

Entered in the  
National Register

for Keeper

Melrose Byers 2/16/90

Attest

124. Commonwealth Avenue Historic District

Entered in the  
National Register

for Keeper

Melrose Byers 2/16/90

Attest

125. Day Estate Historic District

Entered in the  
National Register

for Keeper

Melrose Byers 2/16/90

Attest

126. Gray Cliff Historic District  
(Boundary Increase)

Entered in the  
National Register

for Keeper

Melrose Byers 2/16/90

Attest

127. Monadnock Road Historic District

Entered in the  
National Register

for Keeper

Melrose Byers 2/16/90

Attest

128. Morton Road Historic District

Entered in the  
National Register

for Keeper

Melrose Byers 2/16/90

Attest

\* 129. Newton Highlands Historic District  
(Boundary Increase)

for Keeper

Betty L. Savage 02/16/90

Attest

\* 130. Newtonville Historic District  
(Boundary Increase)

Administrative Review

for Keeper

Betty L. Savage 2/16/90

Attest

UNITED STATES DEPARTMENT OF THE INTERIOR  
NATIONAL PARK SERVICE

NATIONAL REGISTER OF HISTORIC PLACES  
EVALUATION/RETURN SHEET

REQUESTED ACTION: NOMINATION

PROPERTY NAME: Commonwealth Avenue Historic District

MULTIPLE NAME: Newton MRA

STATE & COUNTY: MASSACHUSETTS, Middlesex

DATE RECEIVED: 1/02/90      DATE OF PENDING LIST: 1/17/90  
DATE OF 16TH DAY: 2/02/90      DATE OF 45TH DAY: 2/16/90  
DATE OF WEEKLY LIST:

REFERENCE NUMBER: 90000012

NOMINATOR: STATE

REASONS FOR REVIEW:

APPEAL: N DATA PROBLEM: N LANDSCAPE: N LESS THAN 50 YEARS: N  
OTHER: N PDIL: N PERIOD: N PROGRAM UNAPPROVED: N  
REQUEST: N SAMPLE: N SLR DRAFT: N NATIONAL: N

COMMENT WAIVER: N

ACCEPT     RETURN     REJECT    2/16/90 DATE

Entered in the  
National Register

ABSTRACT/SUMMARY COMMENTS:

RECOM./CRITERIA \_\_\_\_\_  
REVIEWER \_\_\_\_\_  
DISCIPLINE \_\_\_\_\_  
DATE \_\_\_\_\_

DOCUMENTATION see attached comments Y/N see attached SLR Y/N

---

CLASSIFICATION

count       resource type

---

STATE/FEDERAL AGENCY CERTIFICATION

---

FUNCTION

historic       current

---

DESCRIPTION

architectural classification  
 materials  
 descriptive text

---

SIGNIFICANCE

Period      Areas of Significance--Check and justify below

Specific dates      Builder/Architect  
Statement of Significance (in one paragraph)

summary paragraph  
 completeness  
 clarity  
 applicable criteria  
 justification of areas checked  
 relating significance to the resource  
 context  
 relationship of integrity to significance  
 justification of exception  
 other

---

BIBLIOGRAPHY

---

GEOGRAPHICAL DATA

acreage       verbal boundary description  
 UTM's       boundary justification

---

ACCOMPANYING DOCUMENTATION/PRESENTATION

sketch maps     USGS maps     photographs     presentation

---

OTHER COMMENTS

Questions concerning this nomination may be directed to

\_\_\_\_\_ Phone \_\_\_\_\_

Signed \_\_\_\_\_ Date \_\_\_\_\_



Commonwealth Avenue H.D Newton, MA-MRA

808 Commonwealth Avenue  
Newton, MA

C. Jenkins

4/87

req. @ Jackson Homestead

87/8-14



Commonwealth Avenue H.D. -  
607 Commonwealth Avenue  
Newton, MA

Newton, MA-MRA

C. Jenkins

1/87

req. @ Jackson Homestead

87-2-31A



Commonwealth Avenue H.D.  
386 Commonwealth Avenue  
Newton, MA

Newton, MA-MRA

C. Jenkins

1/87

neg. @ Jackson Homestead

87-2-29

**JOHN T. BURNS**  
A SOLO INC.  
**REAL ESTATE**  
SEE US FIRST

Commonwealth Avenue H.D.

242 Commonwealth Avenue  
Newton, MA

Newton, MA-MRA

C. Jenkins

1/87

req. @ Jackson Homestead

87-2-27



Commonwealth Avenue H.D.

789 Commonwealth Avenue

Newton, MA-MRA

Newton, MA

C. Jenkins

4/87

req. @ Jackson Homestead

87/5-13



Commonwealth Avenue H.S.  
321 Commonwealth Avenue  
Newton, MA

Newton, MA-MRA

C. Jenkins

1/87

neg. @ Jackson Homestead

87-2-28



BRODRICK BROS.  
REALTORS

MLS

THE SHIRT & TIE  
& GAITHER

Commonwealth Avenue H D -  
630 - 634 Commonwealth Avenue  
Newton MA.

Newton, MA-MRA

C Jenkins

1/87

neg. @ Jackson Homestead

87-2-33



Commonwealth Avenue H-D  
603 Commonwealth Avenue  
Newton, MA

Newton, MA-MRA

C. Jenkins  
1/87  
reg. C Jackson Homestead

87-2-30A



Commonwealth Ave. H.D.  
661 Commonwealth Avenue  
Newton

Newton, MA-MRA

neg. @ Jackson Homestead



Commonwealth Avenue H.D.  
John H. Johnson House  
71 Commonwealth Ave.  
Newton, MA

Newton, MA-MRA

C. Jenkins

1/87

negative - Jackson Homestead  
new - north

NCB CH-011

82/10-31



Commonwealth Ave H.D  
95 Commonwealth Ave.  
Newton

Newton, MA-MRA

req. @ Jackson Homestead



Commonwealth Ave. H.D.  
518 Commonwealth Ave  
Newton

Newton, MA-MRA

req. @ Jackson Homestead



Newton, MA-MRA

Commonwealth Avenue H.D.  
555 Commonwealth Avenue  
Newton, MA

C. Jenkins

1/87

neg. @ Jackson Homestead

87-2-30



Newton, MA-MRA

Commonwealth Ave H.D.  
700 Commonwealth Ave.  
Newton

neg. @ Jackson Homestead

#33

VIA  
CERTIFIED MAIL  
RETURN RECEIPT REQUESTED

BF  
Newton 20<sup>th</sup> c.  
MRA file

1073 Centre Street  
Newton Center, MA. 02159  
February 21, 1989

RECEIVED

FEB 23 1989

MASS. HIST. COMM

Valerie A. Talmage, Executive Director  
State Historic Preservation Officer  
Massachusetts Historical Commission  
80 Boylston Street  
Boston, Massachusetts 02116

Re: 650 Commonwealth Ave. (Newton)  
Re: Historic District

Dear Ms. Talmage:

Your letter (form letter) dated January 30, 1989, addressed to me at a former temporary Florida address was just forwarded--too late to attend the public meeting at Newton City Hall on February 16, 1989.

In response to your letter and the Memorandum to Property Owners from Betsy Friedberg, National Register Director, Mr. Ludwin and I have discussed the proposed listing of the property at 650 Commonwealth Avenue and I herewith submit the enclosed notarized statement in objection to the listing of this property in the National Register of Historic Places.

Please see that this objection is presented at the March 8, 1989, meeting of the Commission at the Worcester Historical Society and also to other interested parties.

Yours truly,

Irene D. Ludwin, Trustee

Enclosure: Affidavit

CC: Betsy Friedberg, National Register Director  
Massachusetts Historical Commission

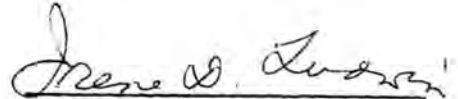
AFFIDAVIT OF OWNER

OBJECTING TO

LISTING OF PROPERTY IN NATIONAL REGISTER OF HISTORIC PLACES  
UNDER NATIONAL HISTORIC PRESERVATION ACT AND 36CFR, PART 60.


Re: 650 Commonwealth Avenue, Newton Center, Massachusetts

I, Irene D. Ludwin, Trustee, owner of the property at  
650 COMMONWEALTH AVENUE, NEWTON CENTER, MASSACHUSETTS, 02159,  
hereby OBJECT to the proposed listing of this property with the  
National Register of Historic Places.



Irene D. Ludwin, Trustee  
1073 Centre Street  
Newton Center, Ma. 02159

Date: 2-21-89

Notary: 

Notary Public, State of Florida

My Commission expires: My Commission Expires Sept. 18, 1992

Bonded Thru Troy Fain - Insurance Inc.