



Fort Robinson and Red Cloud Agency

Crawford, Nebraska, Dawes County

Stephen Lissandrello, 8/75

Historic Sites Survey, NPS

Facing north to restored 1887 Officer's  
Quarters (Bldg. 96).



Fort Robinson and Red Cloud Agency

Crawford, Nebraska, Dawes County

Stephen Lissandrello, 8/75

Historic Sites Survey, NPS

Facing north to 1887 Officer's Quarters  
(Bldgs 91-95).





Fort Robinson and Red Cloud Agency

Crawford, Nebraska, Dawes County

Stephen Lissandrello, 8/75

Historic Sites Survey, NPS

Facing north to 1909 Veterinary Hospital  
(Bldg. 80).



Fort Robinson and Red Cloud Agency

Crawford, Nebraska, Dawes County

Stephen Lissandrello, 8/75

Historic Sites Survey, NPS

Facing west to (left, Bldg. 71) 1908

Cavalry Stable and (right, Bldg. 64)

1891 Cavalry Stable.



Fort Robinson and Red Cloud Agency

Crawford, Nebraska, Dawes County

Stephen Lissandrello, 8/75

Historic Sites Survey, NPS

Facing east towards 1875 Officer's  
Quarters (Bldgs 3-6).



Fort Robinson and Red Cloud Agency

Crawford, Nebraska, Dawes County

Stephen Lissandrello, 8/75

Historic Sites Survey, NPS

Facing south towards reconstructed (left  
Bldg. 12) 1874 Adjutant and (right, Bldg.  
14) 1874 Guard House.





Fort Robinson and Red Cloud Agency

Crawford, Nebraska, Dawes County

Stephen Lissandrello, 8/75

Historic Sites Survey, NPS

Facing east to 1884 Wheelwright's Shop.



NEBRASKA

HISTORICAL

MARKER



## RED CLOUD AGENCY

Red Cloud Agency was established here in 1875 for Chief Red Cloud and his Oglala band, as well as for other northern plains Indians, totaling nearly 13,000. Their earlier agency had been located off the North Platte near Fort Laramie. The agencies served as issuing points for supplies to the Sioux, Cheyenne and Arapaho, authorized in exchange for land ceded to the U.S. in 1868. Dr. J. J. Saville, nominated by the Episcopal Church, was appointed the first agent.

A faction of Agency Indians, joined with visiting hostiles, harassed Saville and his thirty to forty employees, threatened cowboys, and rode through the unfinished stockade shooting out windows. After the establishment of nearby Camp Robinson in March 1874, the agency remained a powder keg. In October 1874, for example, hostiles chopped down the new agency flagpole and threatened to destroy both the agency and the military camp.

During the Indian war of 1876, the agency served as the center for non-hostiles. After the treaty ceding the Black Hills to the U.S. was signed here in 1876, and the death of Crazy Horse in 1877, the agency was relocated to the Pine Ridge Agency, Dakota Territory.

Nebraska State Historical Society

Fort Robinson and Red Cloud Agency

Crawford, Nebraska, Dawes County

Stephen Lissandrello, 8/75

Historic Sites Survey, NPS

Facing north to Red Cloud Agency site.

Note marker in left center placing camp structure.



Fort Robinson and Red Cloud Agency

Crawford, Nebraska, Dawes County

Stephen Lissandrello, 8/75

Historic Sites Survey, NPS

Facing east to multiple-dwelling 1909  
Officer's Quarters (Bldg. 99).



Fort Robinson and Red Cloud Agency

Crawford, Nebraska, Dawes County

Stephen Lissandrello, 8/75

Historic Site Survey, NPS

Facing North to front entrances, 1909 duplex Officer's Quarters (Bldg. 85 on map).





FT. ROBINSON & RED CLOUD AGENCY

Crawford, Nebraska

Photographer: Sally Pearce, 7/12/83

Negatives: at NPS, Rocky Mt. Region

View: Bldg. #32, Post Headquarters



FT. ROBINSON & RED CLOUD AGENCY

Crawford, Nebraska

Photographer: Sally Pearce

Negatives: at NPS, Rocky Mt. Region

View: 1874 Officer's Row



FT. ROBINSON & RED CLOUD AGENCY

Crawford, Nebraska

Photographer: Sally Pearce, 7/12/83

Negatives: at NPS, Rocky Mt. Region

View: Bldg. #101, Post Gymnasium



FT. ROBINSON & RED CLOUD AGENCY

Crawford, Nebraska

Photographer: Sally Pearce 7/12/83

Negatives: at NPS, Rocky Mt. Region

View: Bldgs. #42-47, Officer's Qtrs.

(1874)





VETERINARY HOSPITAL

FT. ROBINSON & RED CLOUD AGENCY

Crawford, Nebraska

Photographer: Sally Pearce, 7/12/83

Negatives: at NPS, Rocky Mt. Region

View: Bldg. #124, Vet Hospital



FT. ROBINSON & RED CLOUD AGENCY

Crawford, Nebraska

Photographer: Sally Pearce, 7/12/83

Negatives: at NPS, Rocky Mt. Region

View: Red Cloud Agency, showing  
markers, facing north



FT. ROBINSON & RED CLOUD AGENCY

Crawford, Nebraska

Photographer: Sally Pearce, 7/12/83

Negatives: at NPS, Rocky Mt. Region

View: Red Cloud Agency, looking to

Red Cloud's Village, facing west



FT. ROBINSON & RED CLOUD AGENCY

Crawford, Nebraska

Photographer: Sally Pearce, 7/12/83

Negatives: at NPS, Rocky Mt. Region

View: Site of POW Camp, facing south





FT. ROBINSON & RED CLOUD AGENCY

Crawford, Nebraska

Photographer: Sally Pearce, 7/12/83

Negatives: at NPS, Rocky Mt. Region

View: Camp Camby Site, facing south



FT. ROBINSON & RED CLOUD AGENCY

Crawford, Nebraska

Photographer: Sally Pearce, 7/12/83

Negatives: At NPS, Rocky Mt. Region

View: The Farm, Dairy Barn on right,  
slaughterhouse on left

NEBRASKA  
HISTORICAL MARKER

### THE FORT ROBINSON CEMETERY

The first recorded interment in the Fort Robinson Cemetery was that of James Brown, July 2, 1875, and the last Larry Dean Wittse, July 19, 1945. Among the 258 interments listed in Fort Robinson Cemetery records are two officers, Markland Williamson and James A. Swift, two Army scouts known throughout the West, Moses "California Joe" Milroy (Cluster's favorite scout) and Baptiste "Little Bear" Garnier; nine men killed in the tragic Cheyenne Outbreak (January, 1879); two Congressional Medal of Honor recipients, Emanuel Stange and George Jordan; and a number of women and children, the dependents of service personnel.

Its location at the confluence of Soldier Creek and the White River made the Fort Robinson Cemetery subject to frequent flooding. In 1928 E. A. Brimmon, chronicler of the West, visited the cemetery and was shocked to find that it was over-run with weeds and underbrush. Later caretakers were appointed, and the cemetery was well maintained until the post closed.

When the United States Army abandoned Fort Robinson in 1916, the remaining 245 graves, 85 of which were listed as unknown, were moved to Fort McPherson National Cemetery near Maxwell, Nebraska.

Copyright Nebraska State Historical Society, 1978

FT. ROBINSON & RED CLOUD AGENCY

Crawford, Nebraska

Photographer: Sally Pearce, 7/12/83

Negatives: at NPS, Rocky Mt. Region

View: Ft. Robinson Cemetery Site

facing southwest



FT. ROBINSON & RED CLOUD AGENCY

Crawford, Nebraska

Photographer: Sally Pearce, 7/12/83

Negatives: at NPS, Rocky Mt. Region

View: The Farm, slaughterhouse





FT. ROBINSON & RED CLOUD AGENCY

Crawford, Nebraska

Photographer: Sally Pearce, 7/12/83

Negatives: at NPS, Rocky Mt. Region

View: Building #49, Bandleader's Qtrs.



FT. ROBINSON & RED CLOUD AGENCY

Crawford, Nebraska

Photographer: Sally Pearce, 7/12/83

Negatives: at NPS, Rocky Mt. Region

View: 1887 Officer's Row - Adobe



FT. ROBINSON & RED CLOUD AGENCY

Crawford, Nebraska

Photographer: Sally Pearce, 7/12/83

Negatives: at NPS, Rocky Mt. Region

View: Bldgs. #4-9, 1887 Adobe

Officer's Quarters



FT. ROBINSON & RED CLOUD AGENCY

Crawford, Nebraska

Photographer: Sally Pearce, 7/12/83

Negatives: at NPS, Rocky Mt. Region

View: Bldgs. #4C, 7C, garages





FT. ROBINSON & RED CLOUD AGENCY

Crawford, Nebraska

Photographer: Sally Pearce, 7/12/83

Negatives: at NPS, Rocky Mt. Region

View: Bldg. #38, Barracks



FT. ROBINSON & RED CLOUD AGENCY

Crawford, Nebraska

Photographer: Sally Pearce, 7/12/83

Negatives: at NPS, Rocky Mt. Region

View: Bldg. #1, Commanche Hall,

Bachelor Off. Qtrs.



FT. ROBINSON & RED CLOUD AGENCY

Crawford, Nebraska

Photographer: Sally Pearce, 7/12/83

Negatives: at NPS, Rocky Mt. Region

View: Bldgs. #10, 12 - Officer Qtrs.

(former latrines)



LT. COL. EDWIN C. HARDY

FT. ROBINSON & RED CLOUD AGENCY

Crawford, Nebraska

Photographer: Sally Pearce, 7/12/83

Negatives: at NPS, Rocky Mt. Region

View: Bldg. #15, Officer's Quarters





FT. ROBINSON & RED CLOUD AGENCY

Crawford, Nebraska

Photographer: Sally Pearce, 7/12/83

Negatives: at NPS, Rocky Mt. Region

View: Bldg. #16, Officer's Quarters



FT. ROBINSON & RED CLOUD AGENCY

Crawford, Nebraska

Photographer: Sally Pearce, 7/12/83

Negatives: at NPS, Rocky Mt. Region

View: Bldg. #19, Officer's Quarters



FT. ROBINSON & RED CLOUD AGENCY

Crawford, Nebraska

Photographer: Sally Pearce, 7/12/83

Negatives: at NPS, Rocky Mt. Region

View; Bldg. #17, Commanding Officer's  
Quarters (1909)





FT. ROBINSON & RED CLOUD AGENCY

Crawford, Nebraska

Photographer: Sally Pearce, 7/12/83

Negatives: at NPS, Rocky Mt. Region

View: Building #308, Assembly, Mess Hall





FT. ROBINSON & RED CLOUD AGENCY

Crawford, Nebraska

Photographer: Sally Pearce, 7/12/83

Negatives: at NPS, Rocky Mt. Region

View: Bldgs. #309, NCO Quarters

#310. Pest House



FT. ROBINSON & RED CLOUD AGENCY

Crawford, Nebraska

Photographer: Sally Pearce, 7/12/83

Negatives: at NPS, Rocky Mt. Region

View: Bldg. #311, Hosp. Stwd. Qtrs.



FT. ROBINSON & RED CLOUD AGENCY

Crawford, Nebraska

Photographer: Sally Pearce, 7/12/83

Negatives: at NPS, Rocky Mt. Region

View: Bldg. #201, Powder Magazine



FT. ROBINSON & RED CLOUD AGENCY

Crawford, Nebraska

Photographer: Sally Pearce, 7/12/83

Negatives: at NPS, Rocky Mt. Region

View: Bldg. #27, Firehouse





FT. ROBINSON & RED CLOUD AGENCY

Crawford, Nebraska

Photographer: Sally Pearce, 7/12/83

Negatives: at NPS, Rocky Mt. Region

View: Bldg. #119, Stable Guard



FT. ROBINSON & RED CLOUD AGENCY

Crawford, Nebraska

Photographer: Sally Pearce, 7/12/83

Negatives: at NPS, Rocky Mt. Region

View: Bldg. #109, 1891 Cavalry

Stable



FT. ROBINSON & RED CLOUD AGENCY

Crawford, Nebraska

Photographer: Sally Pearce, 7/12/83

Negatives: at NPS, Rocky Mt. Region

View: Bldgs, #103, 104 - 1908

Cavalry Stables



FT. ROBINSON & RED CLOUD AGENCY

Crawford, Nebraska

Photographer: Sally Pearce, 7/12/83

Negatives: at NPS, Rocky Mt. Region

View: Bldg. #121, Stable Guard





FT. ROBINSON & RED CLOUD AGENCY

Crawford, Nebraska

Photographer: Sally Pearce, 7/12/83

Negatives: at NPS, Rocky Mt. Region

View: hay barns, looking southwest



FT. ROBINSON & RED CLOUD AGENCY

Crawford, Nebraska

Photographer: Sally Pearce, 7/12/83

Negatives: at NPS, Rocky Mt. Region

View: Bldgs. #106, 105 Cavalry

Stables - 1908



FT. ROBINSON & RED CLOUD AGENCY

Crawford, Nebraska

Photographer: Sally Pearce, 7/12/83

Negatives: at NPS, Rocky Mt. Region

View: Bldg. #123, Vet. Hosp. Annex



FT. ROBINSON & RED CLOUD AGENCY

Crawford, Nebraska

Photographer: Sally Pearce. 7/12/83

Negatives: At NPS, Rocky Mt. Region

View: Bldg. #307, Sleeping Qtrs.





FT. ROBINSON & RED CLOUD AGENCY

Crawford, Nebraska

Photographer: Sally Pearce, 7/12/83

Negatives: at NPS, Rocky Mt. Region

View: Bldgs. #114, 115, Blacksmith  
Shops



FT. ROBINSON & RED CLOUD AGENCY

Crawford, Nebraska

Photographer: Sally Pearce, 7/12/83

Negatives: at NPS, Rocky Mt. Region

View: Bldgs. #305, Sale Barn

#304, Broodmare & shipping stable



FT. ROBINSON & RED CLOUD AGENCY

Crawford, Nebraska

Photographer: Sally Pearce, 7/12/83

Negatives: at NPS, Rocky Mt. Region

View: Bldg. #229, Wheelwright's Shop



FT. ROBINSON & RED CLOUD AGENCY

Crawford, Nebraska  
Negatives: at NPS, Rocky Mt. Region  
Photographer: Sally Pearce, 7/12/83

View: #48, CCC Swimming Pool





POST PLAYHOUSE

GETTING MARRIED

FT. ROBINSON & RED CLOUD AGENCY

Crawford, Nebraska

Photographer: Sally Pearce, 7/12/83

Negatives: at NPS, Rocky Mt. Region

View: Bldg. #223, QM store



FT. ROBINSON & RED CLOUD AGENCY

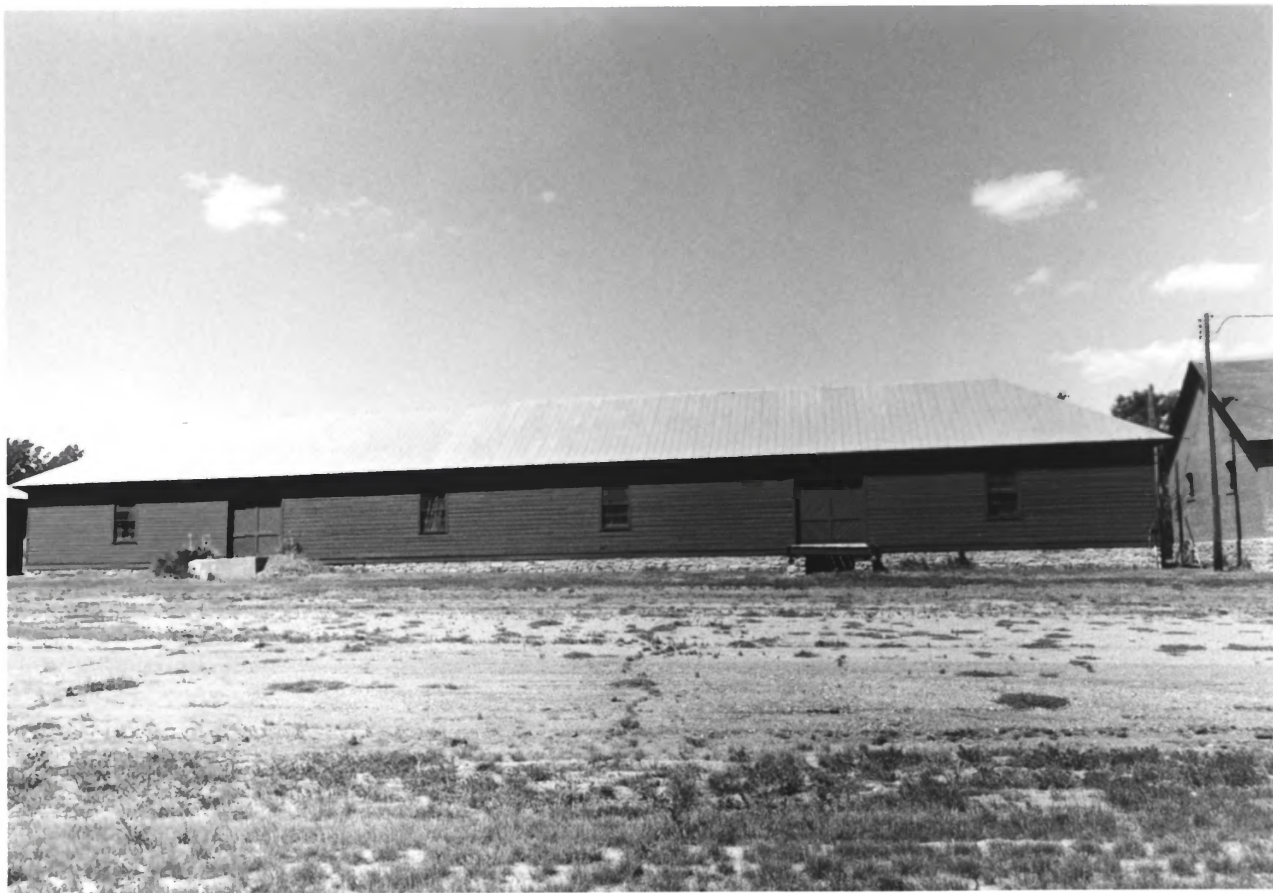
Crawford, Nebraska

Photographer: Sally Pearce, 7/12/83

Negatives: at NPS, Rocky Mt. Region

View: Bldg. #223, QM Stores

(Post Playhouse)



FT. ROBINSON & RED CLOUD AGENCY

Crawford Nebraska

Photographer: Sally Pearce, 7/12/83

Negatives: at NPS, Rocky Mt. Region

View: Bldg. #222, QM Store



FT. ROBINSON & RED CLOUD AGENCY

Crawford, Nebraska

Photographer: Sally Pearce, 7/12/83

Negatives: at NPS, Rocky Mt. Region

View: Bldg. #239, QM Shop





FT. ROBINSON & RED CLOUD AGENCY

Crawford, Nebraska

Photographer: Sally Pearce, 7/12/83

Negatives: at NPS, Rocky Mt. Region

View: #302, water towers.



FT. ROBINSON & RED CLOUD AGENCY

Crawford, Nebraska

Photographer: Sally Pearce 7/12/83

Negatives: at NPS, Rocky Mt. Region

View: Bldgs. #220-221, Granary



FT. ROBINSON & RED CLOUD AGENCY

Crawford, Nebraska

Photographer: Sally Pearce, 7/12/83

Negatives: at NPS, Rocky Mountain Reg.

View: Bldg. #244, Implement Shed



FT. ROBINSON & RED CLOUD AGENCY

Crawford, Nebraska

Photographer: Sally Pearce, 7/12/83

Negatives: at NPS, Rocky Mt. Region

View: Bldg. #240, Paint Storage





FT. ROBINSON & RED CLOUD AGENCY

Crawford, Nebraska

Photographer: Sally Pearce, 7/12/83

Negatives: at NPS, Rocky Mt. Region

View: Bldg. #225 - Concession

intrusion



FT. ROBINSON & RED CLOUD AGENCY

Crawford, Nebraska

Photographer: Sally Pearce

Negatives: at NPS, Rocky Mt. Region

View: 1886 Percy Homestead - non-

contributing to district



FT. ROBINSON & RED CLOUD AGENCY

Crawford, Nebraska

Photographer: Sally Pearce, 7/12/83

Negatives: at NPS, Rocky Mt. Region

View: Swimming Pool (intrusion)



FT. ROBINSON & RED CLOUD AGENCY

Crawford, Nebraska

Photographer: Sally Pearce, 7/12/83

Negatives: at NPS, Rocky Mt. Region

View: The Farm, hay barn, facing

southwest





FT. ROBINSON & RED CLOUD AGENCY

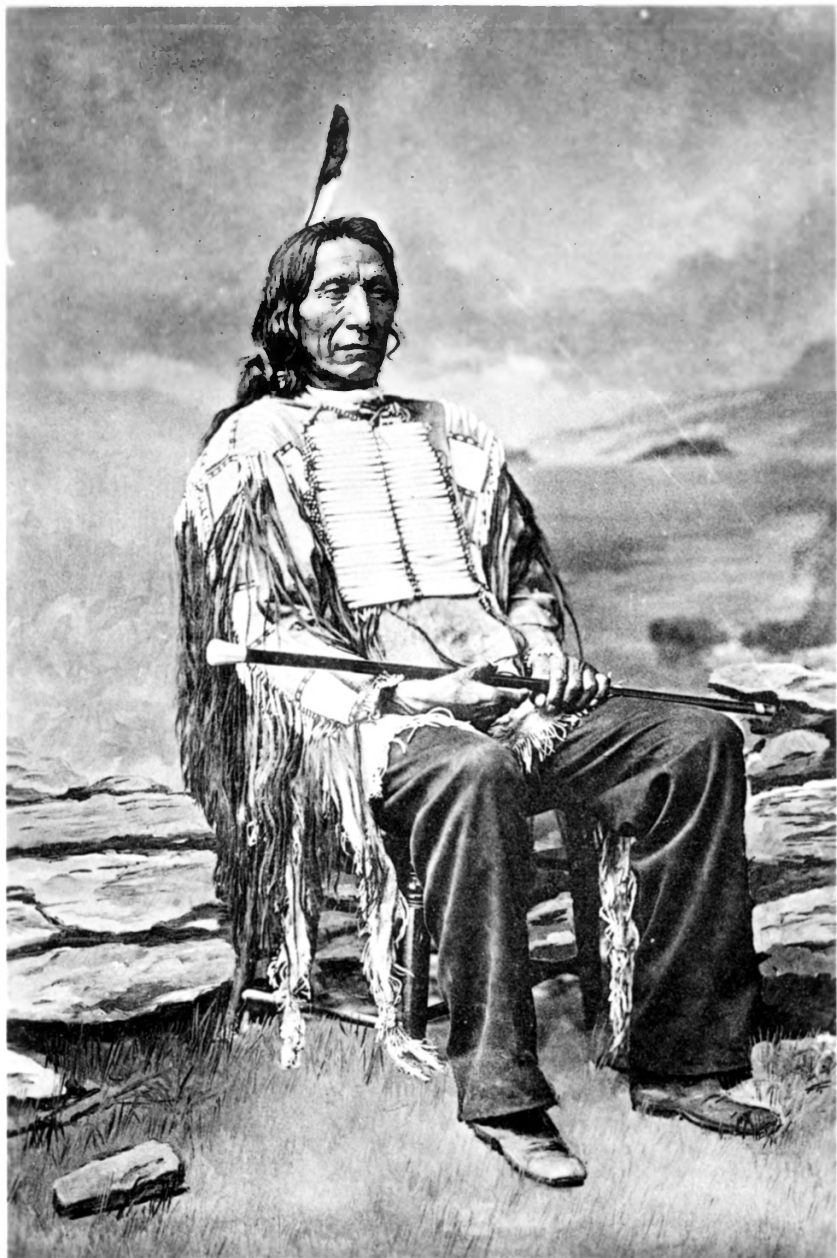
Crawford, Nebraska

Photographer: Sally Pearce, 7/12/83

Negatives: at NPS, Rocky Mt. Region

View: Bldgs. #138 Recon. Adjutant's

Office; #140 Recon. Guard House



Red Cloud. From The Indians of North America; Life

Pictures in Photo-Gravure, copyright 1895 by A. Witte-

man, New York. Collections of the Library of Congress.

