



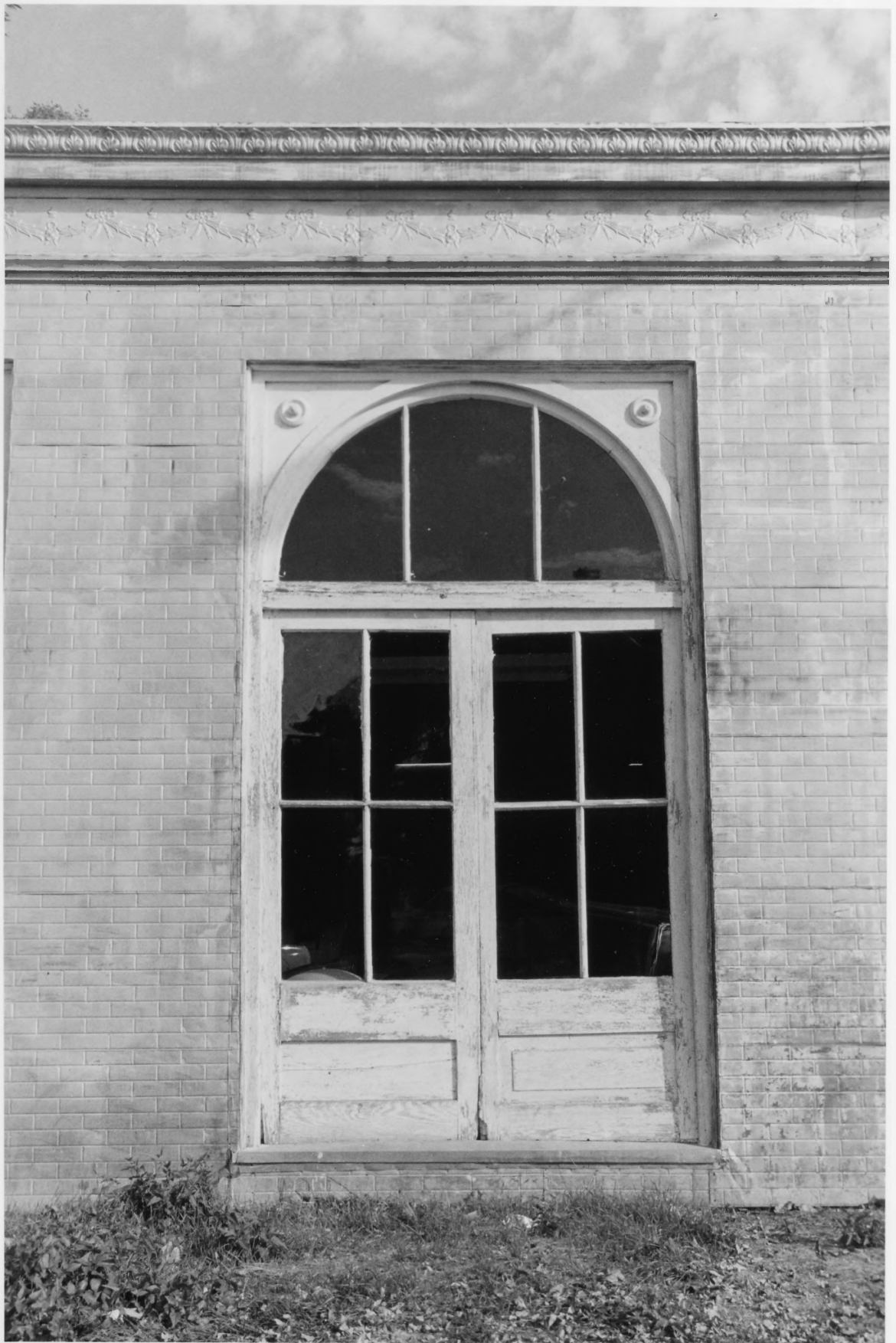
KRESAL Wind Mill Company
(NETHS # 0706:A-16)
NEBRASKA City, OTOE County, Ne.

PHOTO BY JONI G. GILKERSON
NEBRASKA STATE HISTORICAL SOCIETY
SEPTEMBER, 1991 (NHS 9110/11:11)

VIEW LOOKING NORTH NORTHEAST
SHOWING SOUTH (MAIN) FACE.

PHOTO # 1 OF 6

11/8
4/29/4



4094
B/14

KITCAL WINDMILL COMPANY
(NEHBS # 0706:A-16)

NEBRASKA CITY, OTTOE COUNTY, NE.

PHOTO BY JONI G. GILKERSON
NEBRASKA STATE HISTORICAL SOCIETY
SEPTEMBER, 1991 (NEHBS 9110/91:14)

VIEW LOOKING NORTH SHOWING
DOOR/WINDOW DETAIL ON
SOUTH (MAIN) FACADE.

PHOTO # 2 OF 6



4094
A/4

Kregel Wind Mill Company
(NEHBS # 0706: A-16)
NEBRASKA CITY, OTOE COUNTY, NE

PHOTO BY JONI G. GILKERSON
NEBRASKA STATE HISTORICAL SOCIETY
NOVEMBER, 1991 (NSHS 9111/26:4)

INTERIOR VIEW LOOKING NORTHEAST
SHOWING FRONT OFFICE ORNED WITH
ORIGINAL FURNISHINGS.
PHOTO # 3 OF 6



4094

A/34

KIRGAL Wind Mill Company

(NHS # 0706:A-16)

NEBRASKA City, OTOE County, NE

PHOTO BY JONI G. GILKERSON

NEBRASKA STATE HISTORICAL SOCIETY

NOVEMBER, 1991 (NHS 9111/26:34)

INTERIOR VIEW LOOKING NORTHEAST
SHOWING MAIN FACTORY SPACE INCLUDING CENTRAL
COLUMN SUPPORT SYSTEM AND CEILING JOISTS.

PHOTO # 4 OF 6



4094

A/37 Kresal Wind Mill Company

(NeHS # 0106: A-16)

NEBRASKA CITY, OTTOE COUNTY, NE

PHOTO BY JONI G. GILKERSON

NEBRASKA STATE HISTORICAL SOCIETY

NOVEMBER, 1991 (NGHS 9111/26:37)

INTERIOR VIEW LOOKING NORTHEAST
SHOWING MAIN FACTORY SPACE
WITH MONITOR AND EQUIPMENT
POWER DRIVE SYSTEM.

PHOTO # 5 OF 6



4094
A/36

Kriegal Wind Mill Company
(NEHBS # 0106: A-16)
NEBRASKA CITY, OTTOE COUNTY, NE

PHOTO BY JON I. G. GILKERSON
NEBRASKA STATE HISTORICAL SOCIETY
NOVEMBER, 1991 (NSHS 9111/26: 36)

INTERIOR VIEW LOOKING NORTHWEST
SHOWING MAIN FACTORY SPACE
WITH MONITOR AND EQUIPMENT
POWER DRIVE SYSTEM.

PHOTO #6 OF 6