

"Ocean to Ocean" Highway Bridge

Yuma, Yuma County, Arizona

# /  
DEC 5 1978

Photo Credit Yuma Historical Society

3 March 1915

Copy negative filed at History of Engineering  
Program, Texas Tech University

Main span of "Ocean to Ocean" Bridge being  
moved into position on 3 March 1915.

SEP 11 1979



"Ocean to Ocean" Highway Bridge

Yuma, Yuma County, Arizona

#2  
DEC 5 1978

Photo Credit Yuma Historical Society

SEP 11 1979

April 1915

Copy negative filed at History of Engineering  
Program, Texas Tech University

North to view of one of the first automobiles  
crossing the "Ocean to Ocean" Bridge in  
April 1915.

1914.

BUILT BY

OMAHA STRUCTURAL  
STEEL WORKS.

JOHN W. TOWLE, PRES.

B. A. MCCLAIN, SUP'T. CONST.

U.S. INDIAN DEPARTMENT

CATO SELLS, COMMISSIONER.

LOSON L. ODLE, SUPERINTENDENT.

"Ocean to Ocean" Highway Bridge

#3

Yuma, Yuma County, Arizona DEC 5 1978

Photo Credit History of Engineering Program,  
Texas Tech University, Lubbock, TX  
27 May 1978

SEP 11 1979

Negative filed at History of Engineering  
Program, Texas Tech University

Detail of bridge erector's nameplate at north  
end of main truss span of bridge.



"Ocean to Ocean" Highway Bridge

#4

Yuma, Yuma County, Arizona

DEC 5 1978

Photo Credit History of Engineering Program,  
Texas Tech University, Lubbock, TX

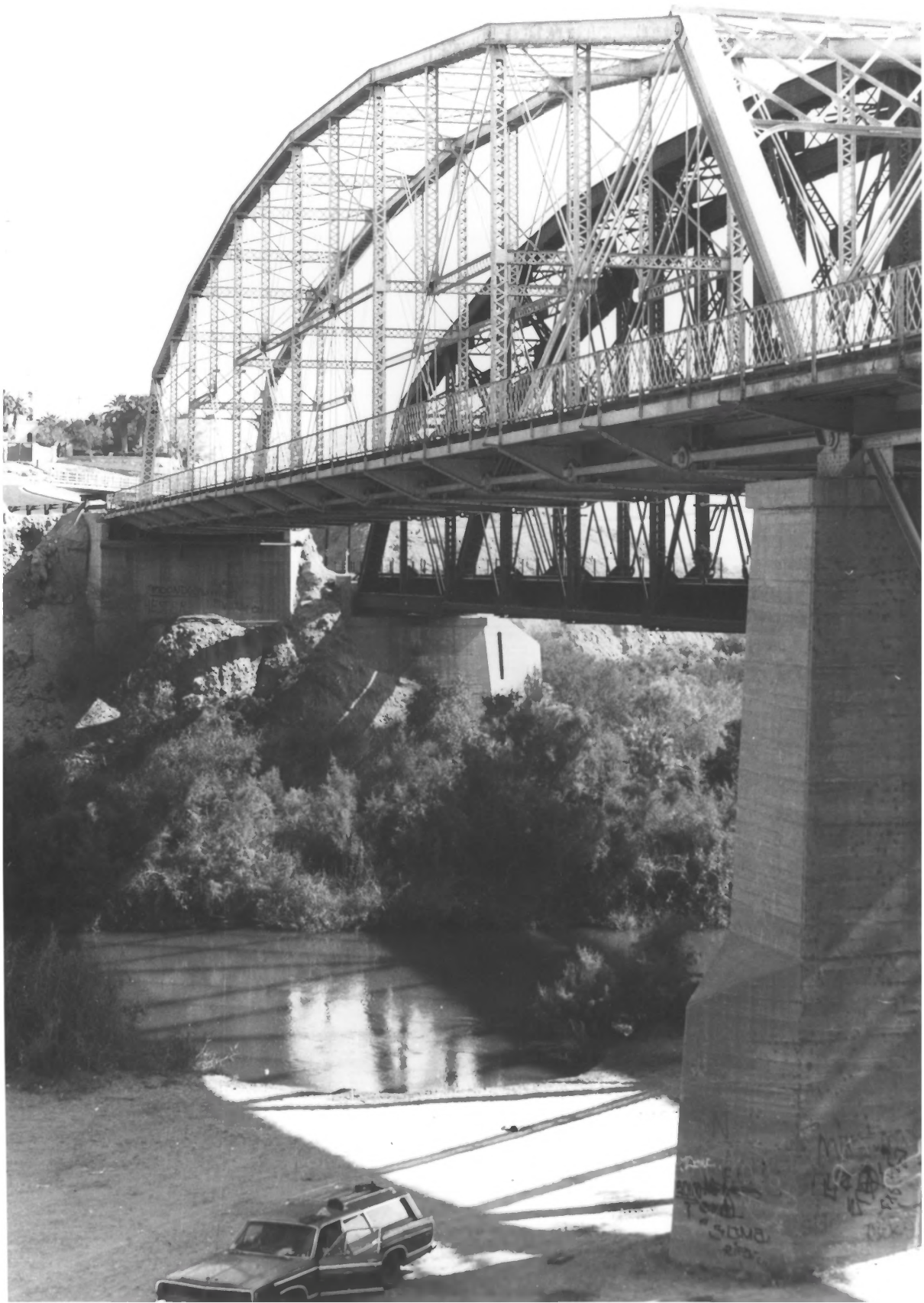
27 May 1978

Negative filed at History of Engineering  
Program, Texas Tech University

South southeast to general view of bridge

SEP 11 1979





"Ocean to Ocean" Highway Bridge

DEC 5

#5  
1978

Yuma, Yuma County, Arizona

Photo Credit History of Engineering Program,  
Texas Tech University, Lubbock, TX

27 May 1978

SEP 11 1979

Negative filed at History of Engineering  
Program, Texas Tech University

North northeast to full view of main span of  
bridge and 60-foot concrete pier



52) 8533 OCEAN-TD-OCEAN BRIDGE (ARIZONA VENTILATOR ~~ADDS~~)