



Svenson Blacksmith Shop
1796 Exchange Street
Astoria, Clatsop County, Oregon

1 of 13

South (front) elevation from
Exchange Street

South Front. Asphalt shingles
applied in 1923. Note last
wooden sidewalk in Astoria.

Andrew Cier Studio Photo, 1986
Hobson Building
Astoria, OR 97103



Svenson Blacksmith Shop
1796 Exchange Street
Astoria, Clatsop County, Oregon

2 of 13

South and east elevations from
intersection of Exchange and 18th
Streets

Note Columbia River Maritime
Museum on extreme right.

Andrew Cier Studio Photo, 1986
Hobson Building
Astoria, OR 97103



Svenson Blacksmith Shop
1796 Exchange Street
Astoria, Clatsop County, Oregon

3 of 13

East and north elevations from inter-
section of 18th and Duane Streets

Andrew Cier Studio Photo, 1986
Hobson Building
Astoria , Oregon 97103



Svenson Blacksmith Shop
1796 Exchange Street
Astoria, Clatsop County, Oregon

4 of 13

North elevation from Duane Street

Andrew Cier Studio Photo, 1986
Hobson Building
Astoria , OR 97103



Svenson Blacksmith Shop
1796 Exchange Street
Astoria, Clatsop County, Oregon

5 of 13
North and west elevations from
Duane Street

West side. Note on right is
Astoria Column, NRHP. On left
is Clatsop County fair grounds
barn.

Andrew Cier Studio Photo, 1986
Hobson Building
Astoria, OR 97103



Svenson Blacksmith Shop
1796 Exchange Street
Astoria, Clatsop County, Oregon

6 of 13

West and south elevations from
Exchange Street

Andrew Cier Studio Photo, 1986
Hobson Building
Astoria, OR 97103



Svenson Blacksmith Shop
1796 Exchange Street
Astoria, Clatsop County, Oregon

7 of 13

Interior view: looking SW from
front of upper story.

Andrew Cier Studio Photo, 1986
Hobson Building
Astoria, OR 97103



Svenson Blacksmith Shop
1796 Exchange Street
Astoria, Clatsop County, Oregon

8 of 13 Note roof trusses
Interior view: looking south to
automobile entrance at front of upper
story. Concrete floor poured in 1923

Andrew Cier Studio Photo, 1986
Hobson Building
Astoria, OR 97103



Svenson Blacksmith Shop
1796 Exchange Street
Astoria, Clatsop County, Oregon

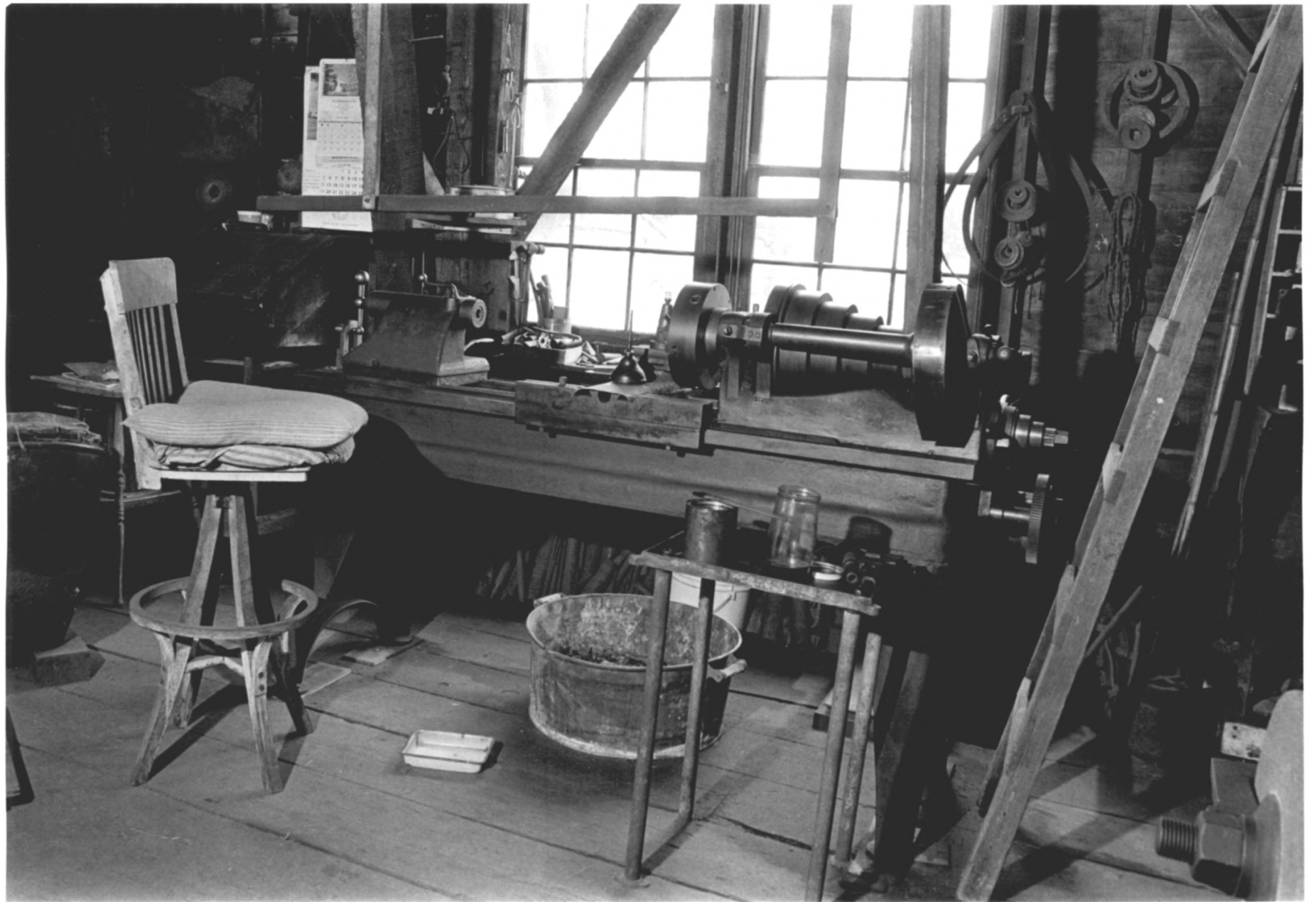
9 of 13

Interior view: looking SE from east
side of lower story

Note forge in foreground; timber bra-
cing for reinforced floor above

Andrew Cier Studio Photo, 1986
Hobson Building
Astoria, OR 97103

Note Mr. Svenson's jacket & hat
still hanging on nail near
heating stove. Also, timber
bracing when concrete floor was
poured above.

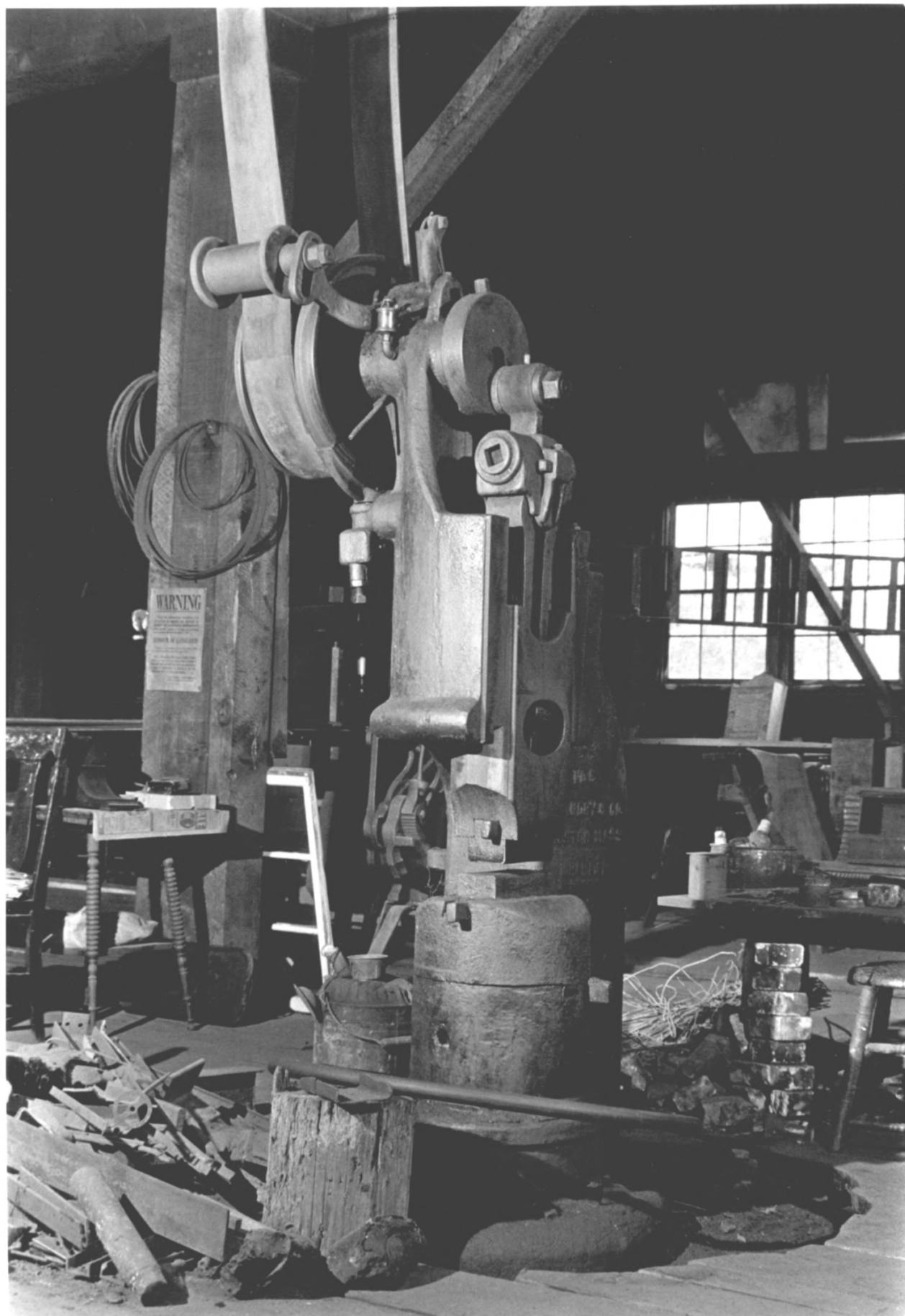


Svenson Blacksmith Shop
1796 Exchange Street
Astoria, Clatsop County, Oregon

10 of 13

Interior view: looking east from
east side of lower story
Note blacksmith's metal lathe

Andrew Cier Studio Photo, 1986
Hobson Building
Astoria, OR 97103

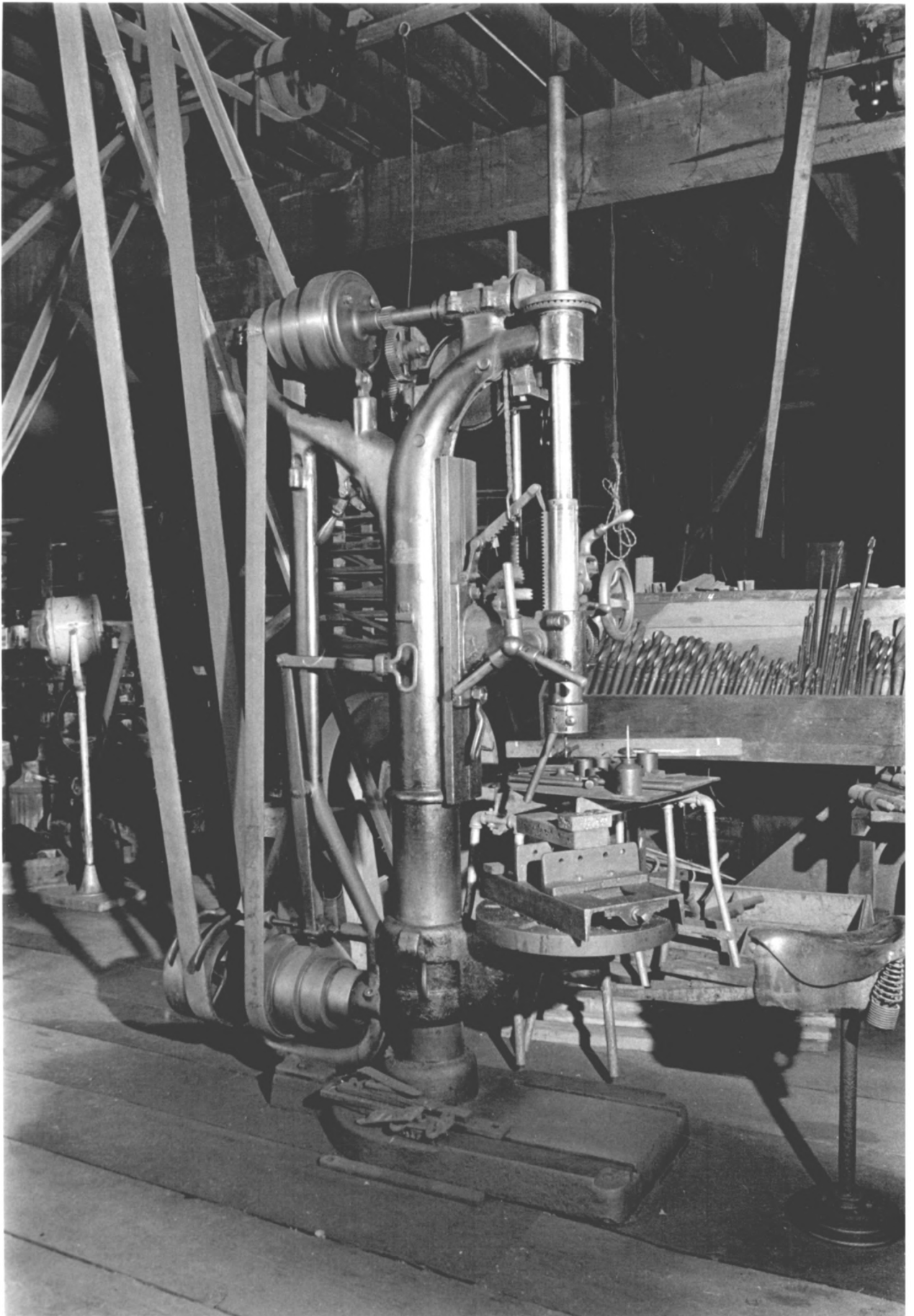


Svenson Blacksmith Shop
1796 Exchange Street
Astoria, Clatsop County, Oregon

11 of 13

Interior view: machinery detail
Power hammer used for wrought iron
work

Andrew Cier Studio Photo, 1986
Hobson Building
Astoria, OR 97103

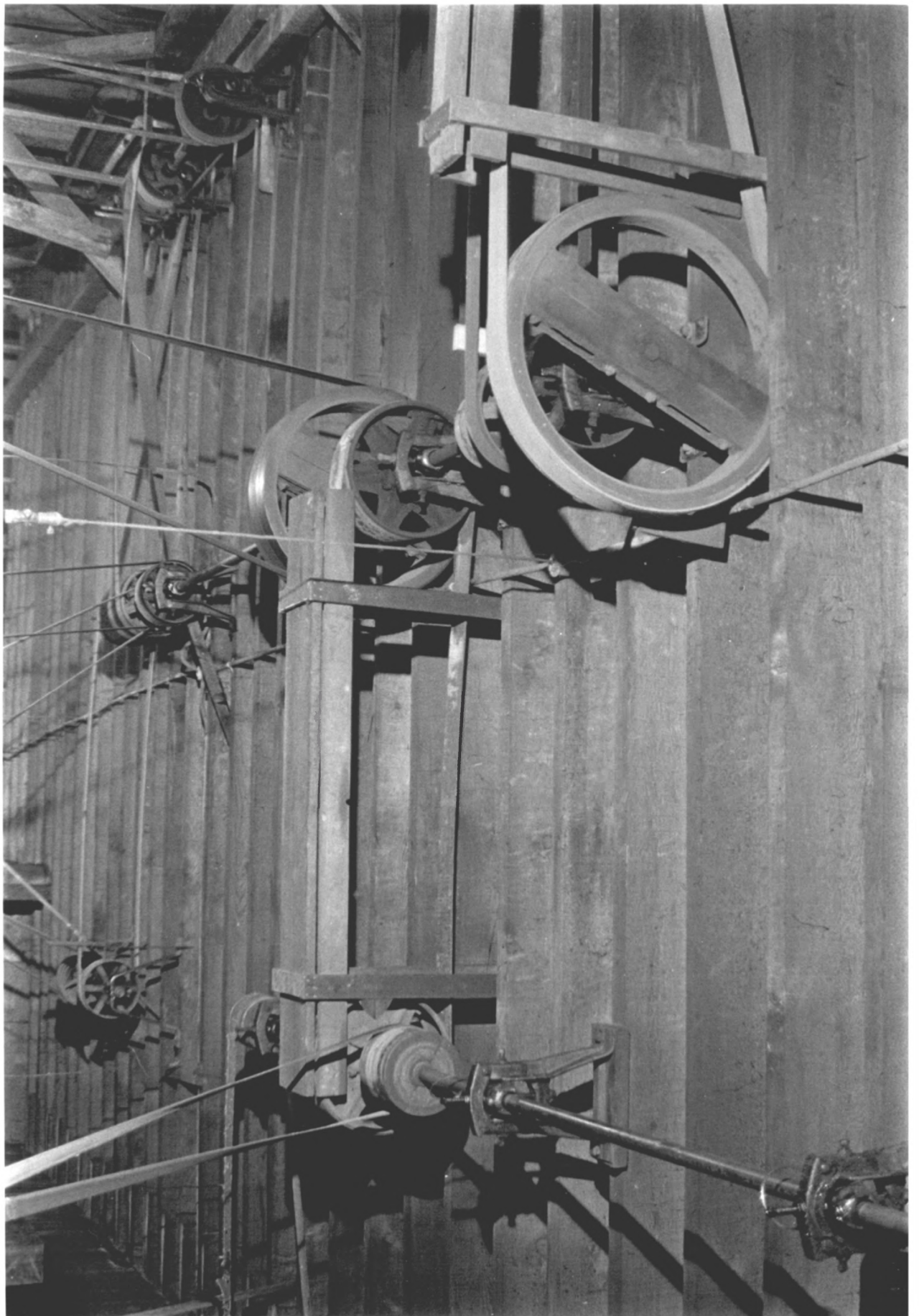


Svenson Blacksmith Shop
1796 Exchange Street
Astoria, Clatsop County, Oregon

12 of 13

Interior view: Drill press and
array of drill bits

Andrew Cier Studio Photo, 1986
Hobson Building
Astoria, OR 97103



Svenson Blacksmith Shop
1796 Exchange Street
Astoria, Clatsop County, Oregon

13 of 13

Interior view: detail of overhead
line shafting, belts and pulleys
driven by electric motor to operate
equipment

Andrew Cier Studio Photo, 1986
Hobson Building
Astoria, Or 97103