



Washburn Fair-Oaks Historic District
Luther Farrington House
2100 Stevens Ave. So., Mpls.
Charles W. Nelson
1977

Minnesota Historical Society, 690
Cedar St., St. Paul, Minn.
East (front) Facade
02016/17

NOV 29 1977

FEB 17 1978

PHOTO #1 of 15
Hennepin Co.



Washburn Fair Oaks Historic District
Luther Farrington House (left)

2100 Stevens Avnue

John Crosby House (right)

2104 Stevens Avenue

Minneapolis, Minnesota

NOV 29 1977

Charles W. Nelson

9/77

Minnesota Historical Society

690 Cedar Street

St. Paul, Minnesota

SW perspective (rear)

02017/6A

FEB 17 1978

PHOTO #2 of 15
Hennepin Co.



Washburn Fair-Oaks Historic District
Streetscape showing John Crosby and
Luther Farrington Houses

(2104, 2100 Stevens Ave. So., resp.)

Minneapolis, MN

Charles W. Nelson

1977

Minnesota Historical Society, 690

Cedar Street, St. Paul, MN

Southeast perspective

02016/15

NOV 29 1977

PHOTO # 3015
Hennepin Co.

FEB 17 1978



Washburn Fair-Oaks Historic District
John Crosby House
2104 Stevens Ave. So., Mpls.
Charles W. Nelson
1977

NOV 29 1977

Minnesota Historical Society, 690
Cedar Street, St. Paul, Minn.
Northeast perspective (front)
02016/16

PHOTO #4215

FEB 17 1978

HENNEPIN Co.



Washburn Fair Oaks Historic District
Caroline Crosby House
2105 First Avenue South
Minneapolis, Minnesota

Charles W. Nelson NOV 29 1977
9/77

Minnesota Historical Society
690 Cedar Street
St. Paul, Minnesota FEB 17 1978
Northwest perspective (front)

PHOTO #5 of 15
Hennepin Co.



Washburn Fair Oaks Historic District
Charles S. Pillsbury House
100 East 22nd Street
Minneapolis, Minnesota

Charles W. Nelson
9/77

FEB 17 1978

Minnesota Historical Society
690 Cedar Street.
St. Paul, Minnesota
West facade

02017/1A

NOV 29 1977

PHOTO # 6 of 15
Hennepin Co.



Washburn Fair-Oaks Historic District
Charles S. Pillsbury house
100 East 22nd St., Minneapolis

Charles W. Nelson
1977

FEB 17 1978

Minnesota Historical Society, 690
Cedar St., St. Paul, Minnesota

South (Front) facade
02016/20

NOV 29 1977

PHOTO # 7 of 15
Henspin Co.



Washburn Fair Oaks Historic District
Charles S. Pillsbury House
100 East 22nd Street
Minneapolis, Minnesota

Charles W. Nelson
9/77

NOV 29 1977

Minnesota Historical Society
690 Cedar Street
St. Paul, Minnesota

FEB 17 1978

Northeast perspective (rear)

PHOTO # 8815

Hennepin Co.



Washburn Fair Oaks Historic District
Charles S. Pillsbury House
100 East 22nd Street

Minneapolis, Minnesota
Charles W. Nelson
9/77

FEB 17 1978

Minnesota Historical Society
690 Cedar Street
St. Paul, Minnesota

NOV 29 1977

Interior/Living Room (looking east)
02017/8A

PHOTO # 9 215

Hennepin Co.



Washburn Fair Oaks Historic District
Charles S. Pillsbury Home
100 East 22nd Street

Minneapolis, Mn.
Charles W. Nelson
9/77

NOV 29 1977

Minnesota Historical Society
690 Cedar Street
St. Paul, Minnesota

FEB 17 1978

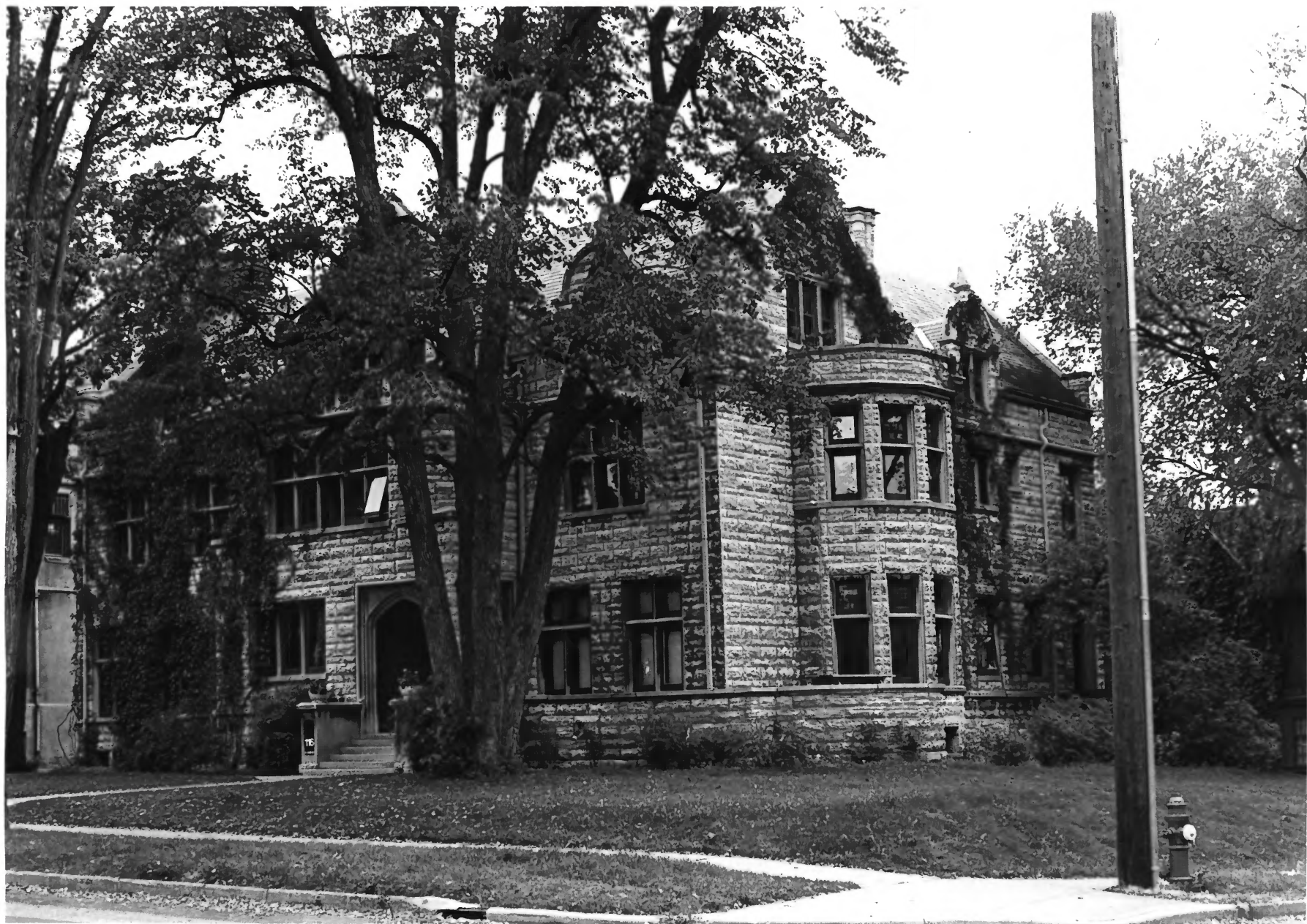
Interior/Fireplace Mantel in Library
02017/14A

PHOTO # 10 215
HENNESPIN CO.



Washburn Fair Oaks Historic District
Charles S. Pillsbury House
100 East 22nd Street
Minneapolis, Minnesota
Charles W. Nelson FEB 17 1978
9/77
Minnesota Historical Society
690 Cedar Street
St. Paul, Minnesota NOV 29 1977
Interior/Staircase
02017/11A

PHOTO # 11815
Hennipin
Co.



Washburn Fair-Oaks Historic District
Alfred F. Pillsbury House
116 E. 22nd Street, Minneapolis, MN
Charles W. Nelson
1977

FEB 17 1978

Minnesota Historical Society, 690
Cedar St., St. Paul, Minn.

Southeast Perspective
02016/10

NOV 29 1977

PHOTO #12 & 15

HENNEPIN CO.



Washburn Fair Oaks Historic District
Alfred F. Pillsbury House
116 East 22nd Street
Minneapolis, Minnesota NOV 29 1977
Charles W. Nelson
9/77

Minnesota Historical Society
690 Cedar Street FEB 17 1978
St. Paul, Minnesota
Northwest perspective (rear)
02017/4A

PHOTO #13 of 15
HENNIPIN Co.



Washburn Fair-Oaks Historic District
Edward C. Gale House
2115 Stevens Avenue South, Minneapolis
Charles W. Nelson
1977

FEB 17 1978

Minnesota Historical Society, 690
Cedar St., St. Paul, Minn.
Southwest perspective
02016/9

NOV 29-1977

PHOTO # 14215
HENNIPPIN Co.



Washburn Fair-Oaks Historic District
Eugene Merrill House
2116 2nd Ave. So., Mpls., Minn.
Charles W. Nelson
1977

FEB 17 1978

Minnesota Historical Society, 690
Cedar St., St. Paul, Minn.

Southeast perspective
02016/12

NOV 29 1977

PHOTO # 15 g 15

Hennepin Co.