



La Luz Pottery Factory

La Luz, New Mexico

Ellen Threinen

February, 1979

New Mexico Historic Preservation Program

view to the south, looking down into La Luz

Canyon

Photo 1 ~~4~~ 7

MAR 28 1979

*Otero County, N.M.*

MAY 29<sup>POE</sup> 1979

LA LUZ  
POTTERY



La Luz Pottery Factory

La Luz, New Mexico

MAR 28 1979

Ellen Threinen

February, 1979

New Mexico Historic Preservation Program

view to the east of residence

Photo 247

*DOE*  
MAY 29 1979



La Luz Pottery Factory

La Luz, New Mexico

MAR 28 1979

Ellen Threinen, *Otero County, N.M.*  
February, 1979

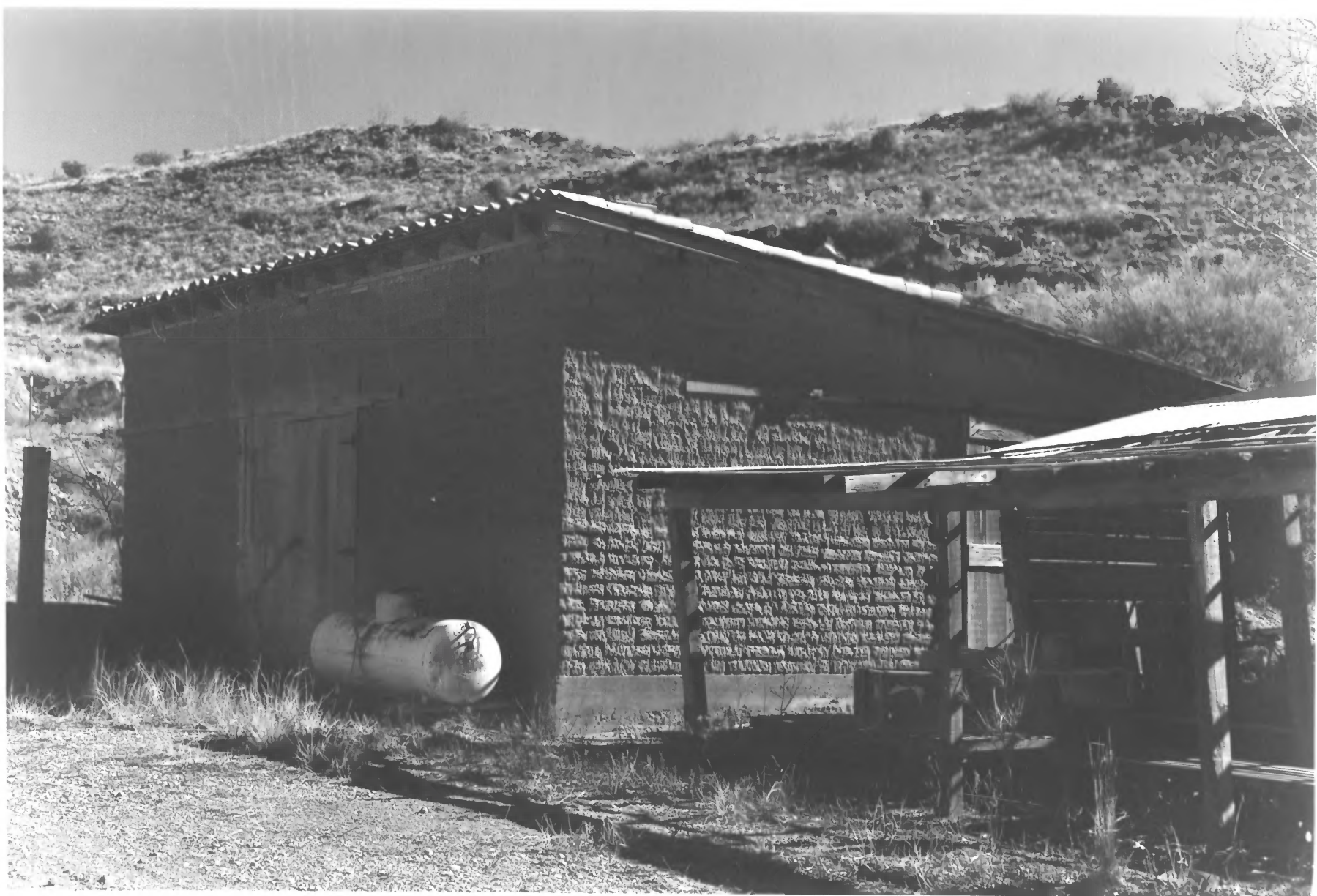
New Mexico Historic Preservation Program

view to the north of clay processing machinery

MAY 29 1979

Photo 347

*DOE*



La Luz Pottery Factory

La Luz, New Mexico

MAR 28 1979

Ellen Threinen

*Otero County* <sup>POE</sup>

MAY 29 1979

February, 1979

New Mexico Historic Preservation Program

view to the northwest of adobe warehouse

Photo 487





La Luz Pottery Factory

La Luz, New Mexico

MAR 28 1979

Ellen Threinen

February, 1979

*Otero County, N.M.*

New Mexico Historic Preservation Program

view to northeast of kiln and chimney

Photo 5 *17*

*DOE*  
MAY 29 1979



La Luz Pottery Factory

La Luz, New Mexico

Ellen Threinen

February, 1979

New Mexico Historic Preservation Program

view to the southeast of large stone house

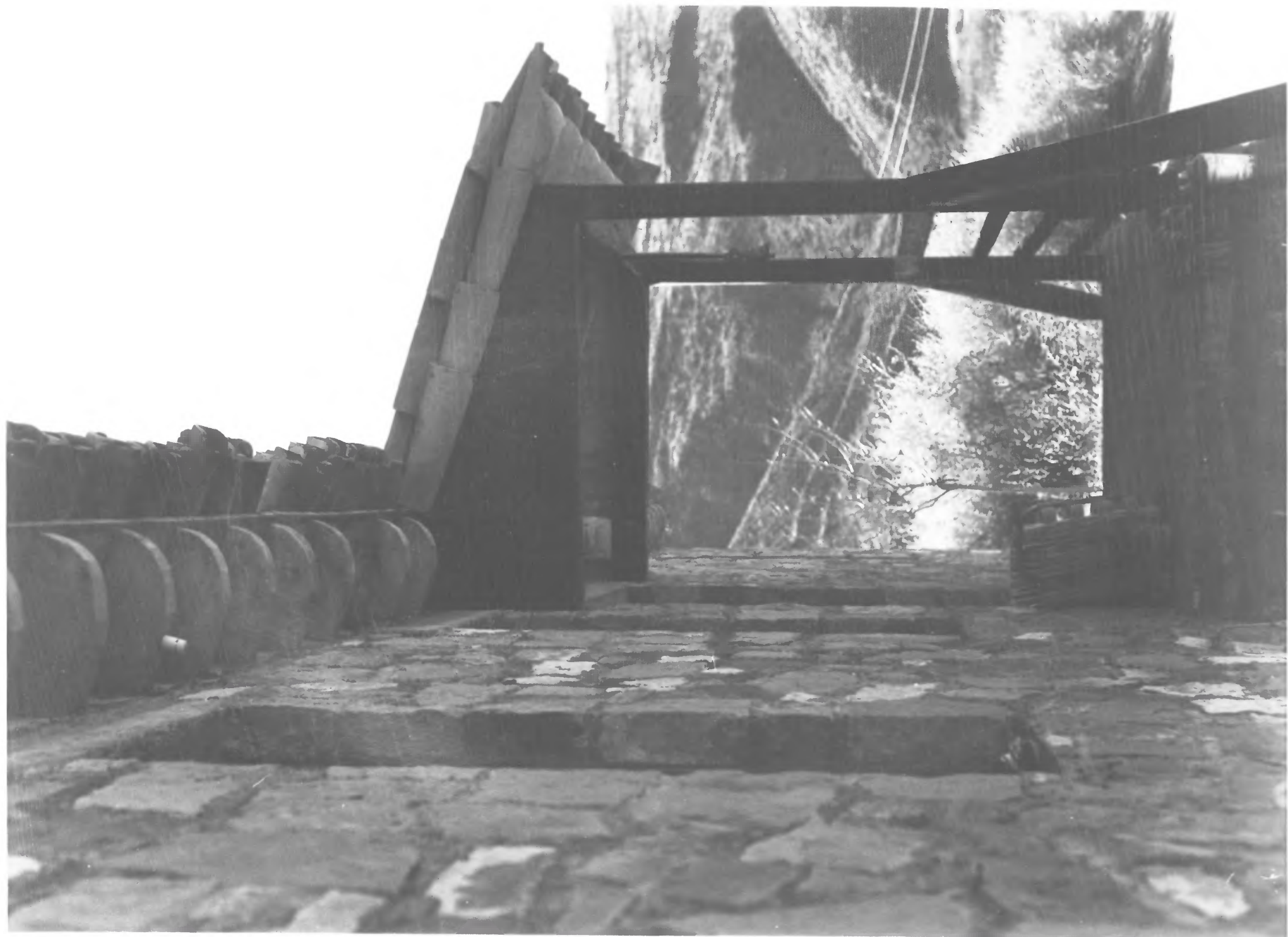
Photo 647

MAY 29 1979

MAR 28 1979

*Otero County, N.M.*

*DOE*



La Luz Pottery Factory

La Luz, New Mexico

MAR 28 1979

Ellen Threinen

February, 1979

*Otero County, N.M.*

New Mexico Historic Preservation Program

detail of north facade of large stone house

Photo 777

*DOE*  
MAY 29 1979