



Shilling Avenue Historic District (site 7)
42/44/46 North Shilling Avenue
Blackfoot, Bingham County, Idaho

Photograph by Jennifer Eastman Attebery
June 1983

Negative on file at the Idaho State Historical Society,
610 North Julia Davis Drive, Boise, Idaho

View from northwest



Shilling Avenue Historic District (site 8)
16 North Shilling Avenue
Blackfoot, Bingham County, Idaho

Photograph by Jennifer Eastman Attebery
June 1983

Negative on file at the Idaho State Historical Society,
610 North Julia Davis Drive, Boise, Idaho

View from north



E JUDICIAL ST

Shilling Avenue Historic District (sites 10, 9, 11)
10 South University/263 East Bridge/000 block South Stout
Blackfoot, Bingham County, Idaho

Photograph by Jennifer Eastman Attebery
June 1983

Negative on file at the Idaho State Historical Society,
610 North Julia Davis Drive, Boise, Idaho

View from southwest



Shilling Avenue Historic District (site 9)
263 East Bridge
Blackfoot, Bingham County, Idaho

Photograph by Jennifer Eastman Attebery
June 1983

Negative on file at the Idaho State Historical Society,
610 North Julia Davis Drive, Boise, Idaho

View from southwest



Shilling Avenue Historic District (site 12)
000 block South Shilling Avenue
Blackfoot, Bingham County, Idaho

Photograph by Jennifer Eastman Attebery
June 1983

Negative on file at the Idaho State Historical Society,
610 North Julia Davis Drive, Boise, Idaho

View from north



Shilling Avenue Historic District (site 13)

108 South University

Blackfoot, Bingham County, Idaho

Photograph by Jennifer Eastman Attebery

June 1983

Negative on file at the Idaho State Historical Society,
610 North Julia Davis Drive, Boise, Idaho

View from north



COURTHOUSE ANNEX
& CIVIC CENTER
R.F. W. WATSON
RIFLEMAN
TENNIS

Shilling Avenue Historic District (site 14)
120 South Shilling Avenue
Blackfoot, Bingham County, Idaho

Photograph by Jennifer Eastman Attebery
June 1983

Negative on file at the Idaho State Historical Society,
610 North Julia Davis Drive, Boise, Idaho

View from north



Shilling Avenue Historic District (sites 15, 16)
210/246 South Shilling Avenue
Blackfoot, Bingham County, Idaho

Photograph by Jennifer Eastman Attebery
June 1983

Negative on file at the Idaho State Historical Society,
610 North Julia Davis Drive, Boise, Idaho

View from north



Shilling Avenue Historic District (site 18)

286 South Shilling Avenue

Blackfoot, Bingham County, Idaho

Photograph by Jennifer Eastman Attebery

June 1983

Negative on file at the Idaho State Historical Society,
610 North Julia Davis Drive, Boise, Idaho

View from north

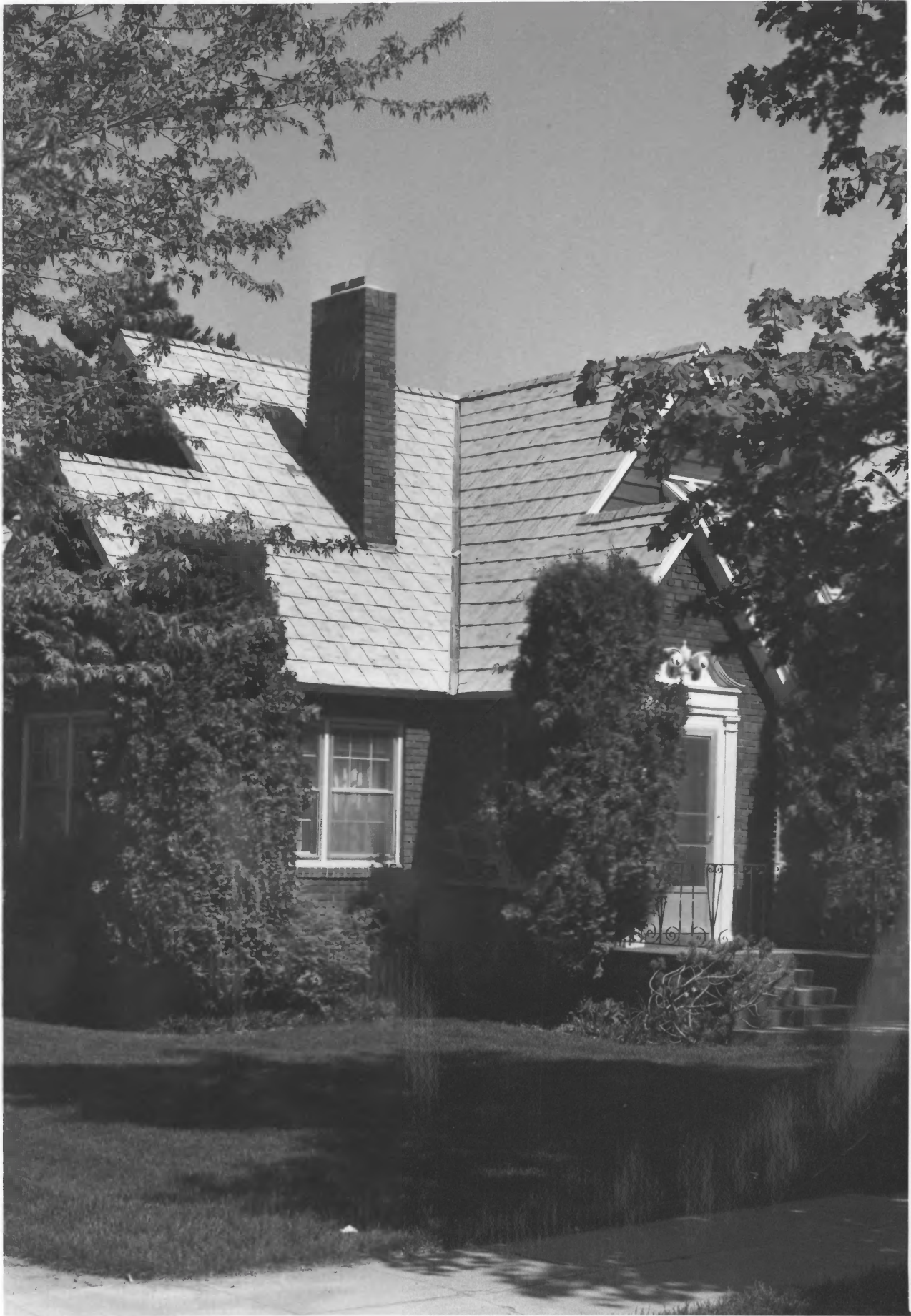


Shilling Avenue Historic District (sites 27, 26)
19/39 North Shilling Avenue
Blackfoot, Bingham County, Idaho

Photograph by Jennifer Eastman Attebery
June 1983

Negative on file at the Idaho State Historical Society,
610 North Julia Davis Drive, Boise, Idaho

View from southeast



Shilling Avenue Historic District (site 28)
9 North Shilling Avenue
Blackfoot, Bingham County, Idaho

Photograph by Jennifer Eastman Attebery
June 1983

Negative on file at the Idaho State Historical Society
610 North Julia Davis Drive, Boise, Idaho

View from south



Shilling Avenue Historic District (site 29)

7 South Shilling Avenue

Blackfoot, Bingham County, Idaho

Photograph by Jennifer Eastman Attebery

June 1983

Negative on file at the Idaho State Historical Society,
610 North Julia Davis Drive, Boise, Idaho

View from southeast



Shilling Avenue Historic District (site 30)
27 South Shilling Avenue
Blackfoot, Bingham County, Idaho

Photograph by Jennifer Eastman Attebery
June 1983

Negative on file at the Idaho State Historical Society,
610 North Julia Davis Drive, Boise, Idaho

View from south



DEAN
WILLIAMS
LAW OFFICES

5
3

Shilling Avenue Historic District (site 31)

53 South Shilling Avenue

Blackfoot, Bingham County, Idaho

Photograph by Jennifer Eastman Attebery

June 1983

Negative on file at the Idaho State Historical Society,
610 North Julia Davis Drive, Boise, Idaho

View from east



Shilling Avenue Historic District (site 34)
211 South Shilling Avenue
Blackfoot, Bingham County, Idaho

Photograph by Duane Garrett
December 1978

Negative on file at the Idaho State Historical Society,
610 North Julia Davis Drive, Boise, Idaho

View from southeast



Shilling Avenue Historic District (site 35)

251 South Shilling Avenue

Blackfoot, Bingham County, Idaho

Photograph by Jennifer Eastman Attebery

June 1983

Negative on file at the Idaho State Historical Society,
610 North Julia Davis Drive, Boise, Idaho

View from east



Shilling Avenue Historic District (site 36)

285 South Shilling Avenue

Blackfoot, Bingham County, Idaho

Photograph by Jennifer Eastman Attebery

June 1983

Negative on file at the Idaho State Historical Society,
610 North Julia Davis Drive, Boise, Idaho

View from southeast



Shilling Avenue Historic District (site 37)

20 Court Street

Blackfoot, Bingham County, Idaho

Photograph by Duane Garrett

December 1978

Negative on file at the Idaho State Historical Society,
610 North Julia Davis Drive, Boise, Idaho

View from northeast



Shilling Avenue Historic District (sites 37, 38, 39, 40)
20 Court Street, 252/280/320 East Main Street
Blackfoot, Bingham County, Idaho

Photograph by Duane Garrett
December 1978

Negative on file at the Idaho State Historical Society,
610 North Julia Davis Drive, Boise, Idaho

View from north



Shilling Avenue Historic District (site 40)

320 East Main Street

Blackfoot, Bingham County, Idaho

Photograph by Duane Garrett

December 1978

Negative on file at the Idaho State Historical Society,
610 North Julia Davis Drive, Boise, Idaho

View from north