



1813

Joseph R. Bowles House

Portland, Oregon

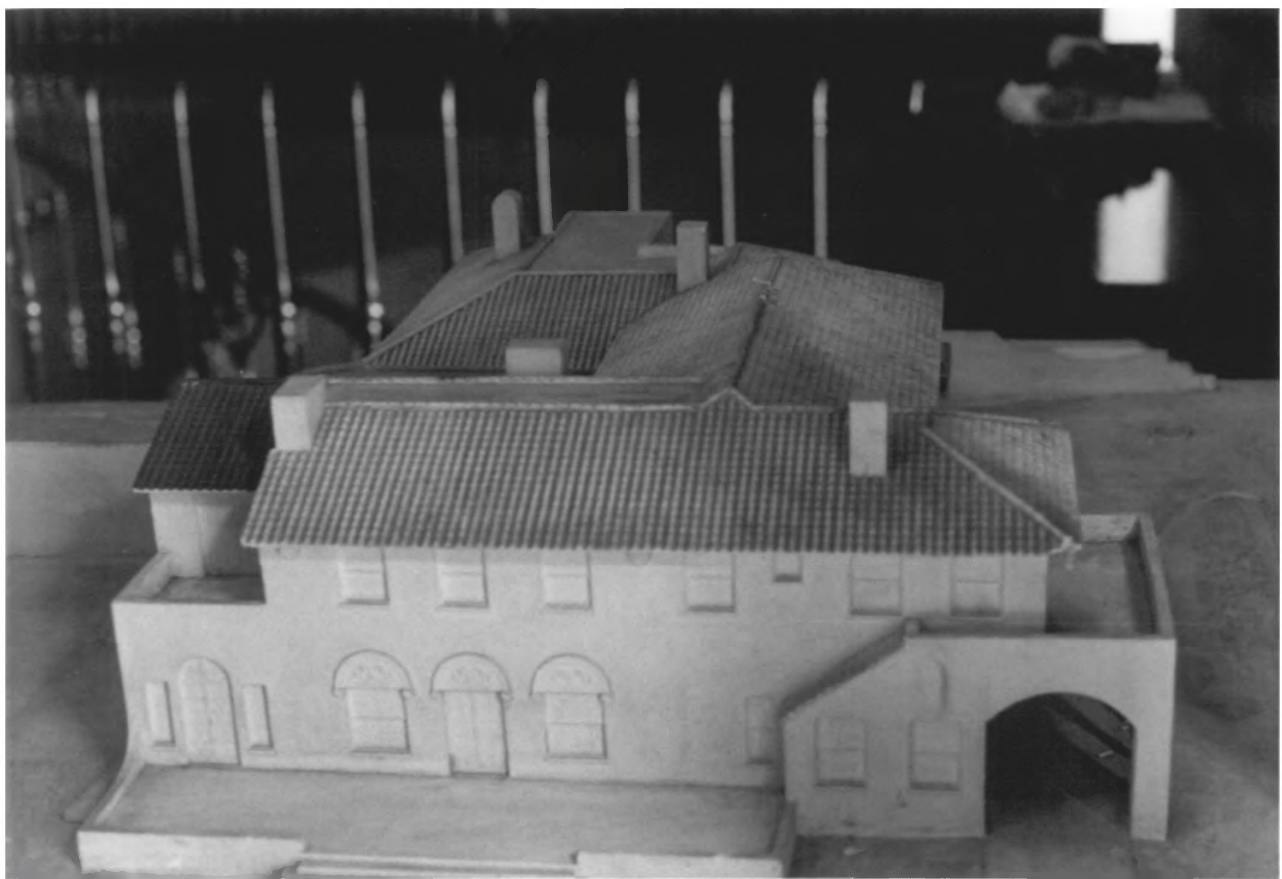
Multnomah County

Photo: Sheila Finch

October 1977

Negative: Office of Sheila Finch-Architect, Portland, Oregon

Original scale model in possession of owner. View from east showing the family side to the right with sun room and master suite balcony; the service wing with porte-cochere to the left. The garage appears in the lower left. The green houses are out of the picture in the foreground.



Joseph R. Bowles House

Portland, Oregon

Photo: Sheila Finch

Negative: Office of Sheila Finch-Architect, Portland, Oregon

Multnomah County

October 1977

Original scale model in possession of the owner. View from the north showing the family wing with facade porte-cochere, study, living room and sun room on the lower level.

2 of 13



3913

Joseph R. Bowles House

Portland, Oregon

Multnomah County

Photo: Sheila Finch

October 1977

Negative: Office of Sheila Finch-Architect, Portland, Oregon

Main stair of black walnut with brass and walnut newels. The original velvet cover is to protect the walnut handrail. Walnut beamed ceiling.



4413

Joseph R. Bowles House

Portland, Oregon

Multnomah County

Photo: Sheila Finch

October 1977

Negative: Office of Sheila Finch-Architect, Portland, Oregon

Southwest corner of house showing side porte-cochere with garage in distance.

Daughter's suite on second floor; pantry on first floor.





5g13

Joseph R. Bowles House

Portland, Oregon

Multnomah County

Photo: Sheila Finch

October 1977

Negative: Office of Sheila Finch-Architect, Portland, Oregon

This is a copy of an earlier photograph. Original photo by Columbia Studios, Portland, Oregon. Negative no. 7209-7 not available. Date between 1953, when the swimming ladder was installed, and 1964, when the ladder was removed and the pool covered.

View of the atrium courtyard showing the reflecting pool.



6913

Joseph R. Bowles House

Portland, Oregon

Multnomah County

Photo: Sheila Finch

October 1977

Negative: Office of Sheila Finch-Architect, Portland, Oregon

East view of house showing atrium courtyard. Pool covered and fountain added in 1964. Stained glass window on stair landing.



7913

Joseph R. Bowles House

Portland, Oregon

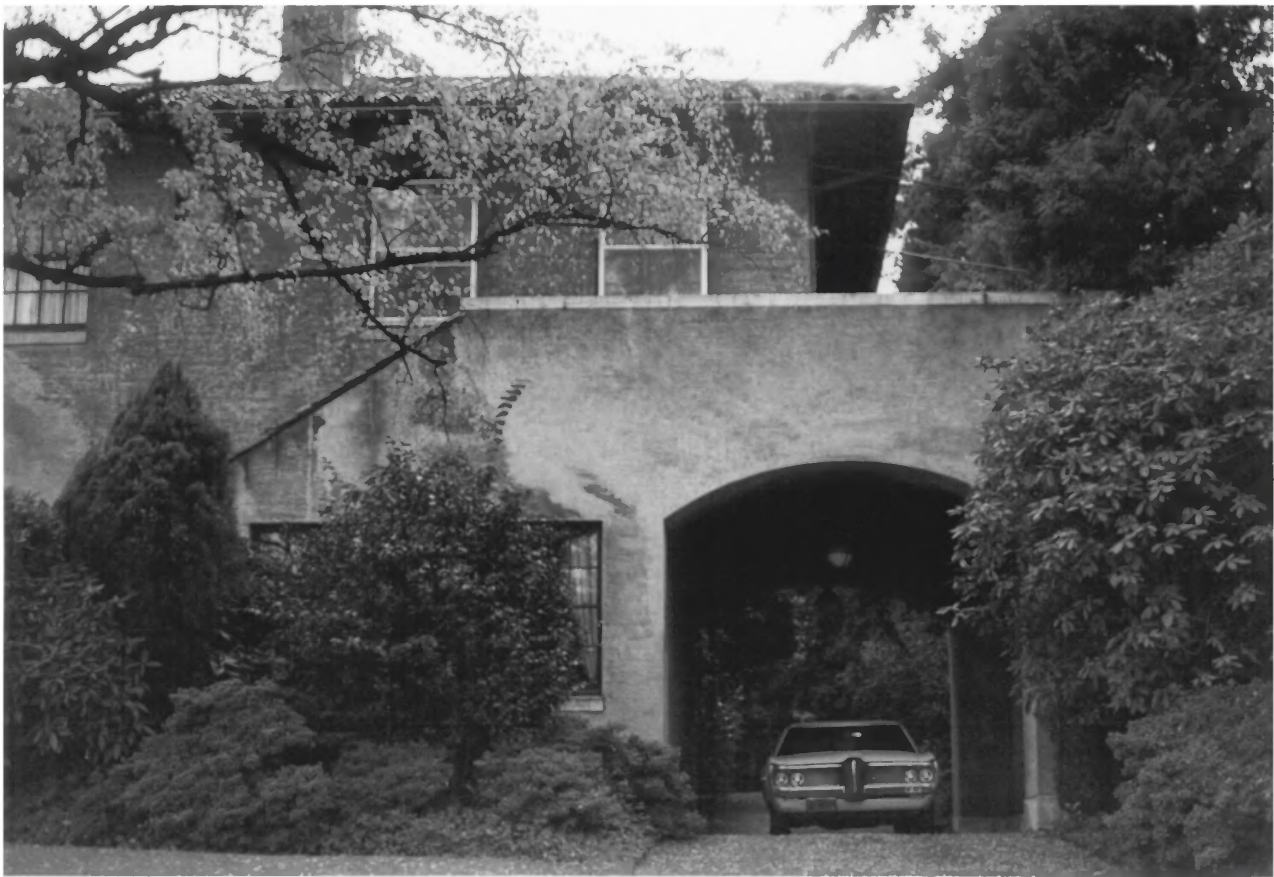
Multnomah County

Photo: Sheila Finch

October 1977

Negative: Office of Sheila Finch-Architect, Portland, Oregon

Living room fireplace of black Italian marble. The wrought iron fire screen is original.



8913

Joseph R. Bowles House

Portland, Oregon

Multnomah County

Photo: Sheila Finch

October 1977

Negative: Office of Sheila Finch-Architect, Portland, Oregon

North side, west end of house. Facade porte-cochere and study on first floor, guest suite on second floor.





9913

Joseph R. Bowles House

Portland, Oregon

Multnomah County

Photo: Sheila Finch

October 1977

Negative: Office of Sheila Finch-Architect, Portland, Oregon

Dining room showing black walnut paneling and beamed ceiling.

Chandelier by Orsenigo of New York.



10 7 13

Joseph R. Bowles House

Portland, Oregon

Multnomah County

Photo: Sheila Finch

October 1977

Negative: Office of Sheila Finch-Architect, Portland, Oregon

North side, east end of house. Master suite on second floor. Living room terrace and sun room on first floor.



11 9 13

Joseph R. Bowles House

Portland, Oregon

Multnomah County

Photo: Sheila Finch

October 1977

Negative: Office of Sheila Finch-Architect, Portland, Oregon

West side of large greenhouse; smaller greenhouse at right



Joseph R. Bowles House

Portland, Oregon

Photo: Sheila Finch

Negative: Office of Sheila Finch-Architect, Portland, Oregon

Painted walnut organ screen in living room. Chandelier by Orsenigo of New York.

Multnomah County

October 1977

12 2 13





Joseph R. Bowles House

Portland, Oregon

Photo: Sheila Finch

Negative: Office of Sheila Finch-Architect, Portland, Oregon

Sun room fountain with glazed tile backdrop.

Multnomah County

October 1977

13 13