

UNITED STATES DEPARTMENT OF THE INTERIOR
NATIONAL PARK SERVICE

FOR NPS USE ONLY	
RECEIVED	FEB 25 1980
DATE ENTERED	APR 11 1980

**NATIONAL REGISTER OF HISTORIC PLACES
INVENTORY -- NOMINATION FORM**

DEPRESSION-ERA BUILDINGS

CONTINUATION SHEET

ITEM NUMBER

PAGE 1 of 6

NAME: Early Winters Ranger Station Work Center

LOCATION: Okanogan National Forest, Winthrop Ranger District; Congressional District 4; Vicinity of Winthrop, Washington (53); Okanogan County (047)

ADDRESS: USDA Forest Service
Okanogan National Forest
1240 Second Avenue South
Okanogan, WA 98840

CLASSIFICATION/CATEGORY: District

DESCRIPTION:

Condition

Excellent Altered Original Site

Early Winters Work Center, Ranger Station Office #2002 (Visitor Center): 1936-37; 36'x30'; rectangular, 1-1/2 story, wood frame, poured concrete foundation, basement, high gable roof, offset intersecting gable on south (main) facade, shed-roofed bay with center porch gable on north (rear) elevation, random rubble interior chimney, center north slope of roof. Horizontal clapboard (1x12 resawn siding) exterior, vertical board and batten on all gable ends. Six-over-six double-hung sash windows, singly and in combinations of two with mullions; ground level windows on south, east, and west elevations, and upper level window in south-facing intersecting gable flanked by decorative vertical board shutters, each having a simple pine tree symbol cut out in upper third. Main entry, center of south facade, recessed in left-hand corner of intersecting gable. Porch supported by three 8x8 timber posts having curving flush brackets affixed; two straight flagstone steps, open flagged platform access single-leaf wood door with three vertical panels, six-light window and hand-forged latch, latch plate and lock plate: rear entry, center north elevation, beneath center porch gable supported by two 8x8 timber posts and six heavy curving flush brackets. Single-leaf wood door, identical to main entry, accessed by two straight stone steps, open flagged platform. Wood shingled roof replaced by textured metal materials. Structure now used as visitor information center and museum.

UNITED STATES DEPARTMENT OF THE INTERIOR
NATIONAL PARK SERVICE

FOR NPS USE ONLY

RECEIVED

DATE ENTERED

**NATIONAL REGISTER OF HISTORIC PLACES
INVENTORY -- NOMINATION FORM**

DEPRESSION-ERA BUILDINGS

CONTINUATION SHEET

ITEM NUMBER

PAGE 2 of 6

Early Winters Work Center, Ranger's Residence #1003 and Garage: 1936-37; 25'x36'8"; irregular, 1-1/2 story, wood frame, poured concrete foundation, basement high gable roof, offset gable on south (main) facade, center gable-projecting 1-1/2 story bay--on north (rear) elevation, two hip-roofed dormers on rear slope of roof; exterior end chimney, coursed rubble, center, west gable end. Horizontal clapboard to eaves--main body of house--random coursed stone facing to eaves on projecting offset and center gables, vertical board, plain battens on all gable ends. Upper level of north-projecting gabled bay exhibits 12 x 12 exterior framing, corner uprights and lintels, exposed edges scrolled. The two vertical beams, ends chamfered, extend ca 4" below the horizontal cross members: carved ovoid pendants, (wood) ca 10" diameter, are affixed to base. Six-over-six double-hung sash windows, singly and in combinations of two with mullions, six-light horizontal casements; ground level windows, (except north projecting bay), upper level south offset gable window flanked by functional z-braced vertical board shutters. Main entry, center south facade, recessed, left-hand corner offset gable, corner of gable roof supported by 8x8 post; accessed by three straight flagged steps, flagstone platform; side entry, off-center on east gable end. A gabled breezeway extends from east gable end to adjacent garage; semi-enclosed by low vertical board railing, the breezeway covers the house's side entry, the exterior steps descending to the basement and a single-leaf wood-panel door at rear of garage. The vertical boards of the railing are punctuated at intervals with small, well-defined pine tree cutouts. Original roof materials, split cedar shakes, with cedar shingles on ridge end eaves, replaced with textured metal material. The garage is a square (20'x20'), wood frame, gable-roofed structure of two vehicle capacity. Horizontal clapboard exterior walls. Two doors extend across east gable end.

Early Winters Work Center, P.A.'s Residence #1004 (House #2): 1938; 35'6"x25'; rectangular, 1 story, wood frame, poured concrete foundation, basement, high gable roof, intersecting gable offset on south (main) facade, exterior end chimney, random rubble, off-center on west gable end, random rubble interior chimney off-center on south slope of roof. Horizontal clapboard, 1x12 resawn siding, exterior, vertical board and batten on all gable ends. Six-over-six double-hung sash windows, singly and in combinations of two with mullions. Main entry, offset in south-facing intersecting gable, accessed by two straight flagstone steps: entry uncovered. The main door surround is formed by 8x8 timbers, the lintel carved and scrolled, the sides routed in form parallel lines as pilasters. No decoration. Original 16" cedar shingle roof materials replaced by textured metal material.

UNITED STATES DEPARTMENT OF THE INTERIOR
NATIONAL PARK SERVICE

FOR NPS USE ONLY

RECEIVED

DATE ENTERED

**NATIONAL REGISTER OF HISTORIC PLACES
INVENTORY -- NOMINATION FORM**

DEPRESSION-ERA BUILDINGS

CONTINUATION SHEET

ITEM NUMBER

PAGE 3 of 6

Early Winters Work Center, Warehouse #2201: 1937-38; 76'x38'; rectangular, 1 1/2 story, wood frame, poured concrete foundation, partial basement, wood-shingled high gable roof, center gables, north and south elevations with gabled porch extending from center gable, south (main) facade; random rubble interior chimney, off-center on ridgeline, offset on north slope of roof. Horizontal clapboard (1x12 resawn pine siding) exterior, vertical board and batten all gable ends. Nine-light casement windows, singly and in combinations of three, four, and five with mullions ground level, mullion windows, three divisions of six lights vertical, center each gable end. Vertical board, slide-opening loading door, raised entry, center of center gable, and slightly offset each side of center gable on main body of structure on south facade. Pyramidal configuration of three broadly shaped pine tree cutouts of equal size on east and west gable ends, one on either side of upper level window and one above, below peak of roof. (Cut from vertical wall materials, battens interrupted.) Plank loading docks with straight side steps originally placed beneath the left and right slide-opening doors on south facade removed; cement loading dock, double straight side steps, cement, with simple board railings, low gabled porch, center of center gable, south facade, more recent additions.

Early Winters Work Center, Machine Storage Building #2311: 1937-38; 32'x40'; rectangular, 1 story, wood frame, poured concrete foundation, wood-shingled high gable roof, random rubble interior chimney, offset on west slope of roof. Horizontal clapboard (1x12 resawn pine siding) exterior, double end boards, vertical boards, plain battens every other board on gable ends. Mullion window, six divisions, nine lights lower divisions, six lights upper divisions on south gable end; nine-light casements on east elevation. Two double-leaf vertical boards slide-opening doors, each leaf having a nine-light window, extend across center of west (main) facade interspaced with three 10x10 timber posts; one double-leaf vertical boards slide-opening door, each leaf having a nine-light window entered with three light window in upper quarter, center north gable end. Louvered ventilator immediately below peak of roof, north and south gable ends. No decoration. No obvious exterior alteration.

Early Winters Work Center, Gas House #2501: 1938; 14'x16'; rectangular, 1 story, wood frame, poured concrete foundation, wood-shingled high gable roof. Horizontal clapboard (1x12 resawn pine siding) exterior, vertical boards, angular cut, battens on gable ends. Nine-light casement windows. Anterior (south) wall is recessed, roof-supported by two pair of three squared timber posts with slightly curving corner brackets--forms cover for pump island and

**United States Department of the Interior
National Park Service**

**National Register of Historic Places
Inventory—Nomination Form**

DEPRESSION-ERA BUILDINGS
Continuation sheet

Item number

Page 4 of 6

service area. Open concrete loading dock, random rubble faced, 6'x7'9", accessed by three straight stone steps originally abutted gas house on the east: loading dock and steps remain, with additional concrete loading or storage space extending to east--the entire concrete construction is now covered with a gabled roof which intersects the center of the east slope of the gas house roof, and is enclosed on the north and east with horizontal clapboard exterior walls; remaining open on the south elevation. A single broadly-shaped pine tree cutout is centered on the south gable end of the gas house proper.

Early Winters Work Center, Barn #2402: 1938; 45'x37'; rectangular, 1-1/2 story, wood frame, poured concrete foundation, wood-shingled high gable roof, shed-roofed bay, center, west (main) facade, shed-roofed extension, two bays in width, intersected by a center gable on east (rear) elevation. Horizontal clapboard (1x12 resawn pine siding) exterior, vertical boards, battens every other board on gable ends. Nine-light casement windows, ground level; mullion window, three divisions of six lights vertical, upper level, north and south gable ends. Large slide-opening vertical board door, center, west facade; large slide-opening vertical board door, off-center (right), north gable end, wood-panel dutch door, center, north gable end; wood-panel dutch door, off-center (left), east elevation, uncovered double-leaf hinge-opening vertical board bay door, each leaf having a six light window, center, upper level center gable end, east elevation.

Post and rail corral fence encloses barn on north east and south, with stock loading chute immediately adjacent to barn on south gable end; west-facing stock gate adjacent to barn on north; hand hewn log watering trough located at midpoint of fence line on north side.

Interior storage rooms for feed, loose hay, bedding straw, and tack in addition to five tie stalls. All interior wood surfaces accessible to stock are beveled or chamfered to prevent possible injury. No decoration. No obvious exterior alterations.

Early Winters Work Center, Powerhouse/ Painthouse #2613: 1937-38; 9'x6"x11'6"; rectangular, 1 story, wood frame, poured concrete foundation, wood-shingled high gable roof. Horizontal clapboard (1x12 resawn pine siding) exterior, vertical boards, plain battens every other board on gable ends. Six-light wood casement windows. Lattice door, center, north and south gable ends. Square opening,

1000-10-900-a
1000-10-900-a

**United States Department of the Interior
National Park Service**

**National Register of Historic Places
Inventory—Nomination Form**



DEPRESSION-ERA BUILDINGS

Continuation sheet

Item number

Page 5 of 6

screened, recessed, lower left, south facade. Louvered ventilator in shape of simple pine tree, center, north and south gable ends--built as designed. No obvious exterior alteration.

SIGNIFICANCE:

The Early Winters Ranger Station, (now Work Center) typifies the construction projects undertaken by the Civilian Conservation Corps and signifies the aid to the local community provided by the emergency work-relief program through employment of youth and experienced craftsmen, purchase of building materials and camp supplies, and personal expenditures of enrollees. The property represents the Forest Service's presence in the locality, as the headquarters for field operation, and denotes, via the physical facilities required to carry out the agency's expanding responsibilities, the critical transition in the Service's development from custodial superintendence to extensive resource management. The Early Winters Ranger Station exemplifies the rustic architectural idiom developed by the Forest Service, Pacific Northwest Region, to impart Forest Service identity and to represent its purposes and ideals, and signifies the agency's particular interpretation of a singular expression of early twentieth century American architectural thought. Possessing superior qualities of design and execution, the Work Center is an outstanding example of an architectural location invested with special aesthetic and associative values by the agency that created it.

The Early Winters Ranger Station manifests the principles of comprehensive site planning initiated by the Forest Service during the Depression, through spatial arrangement, functional organization, architectural unity from complimentary building materials and forms, and landscaping to integrate the building site and complex, and signifies an important advance in administrative site development.

GEOGRAPHICAL DATA

Acreege: Less than 10 acres

UTM Reference:

<u>Point</u>	<u>Zone</u>	<u>Easting</u>	<u>Northing</u>
A	10	689485	5385380

**United States Department of the Interior
National Park Service**

**National Register of Historic Places
Inventory—Nomination Form**

DEPRESSION-ERA BUILDINGS

Continuation sheet

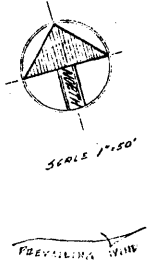
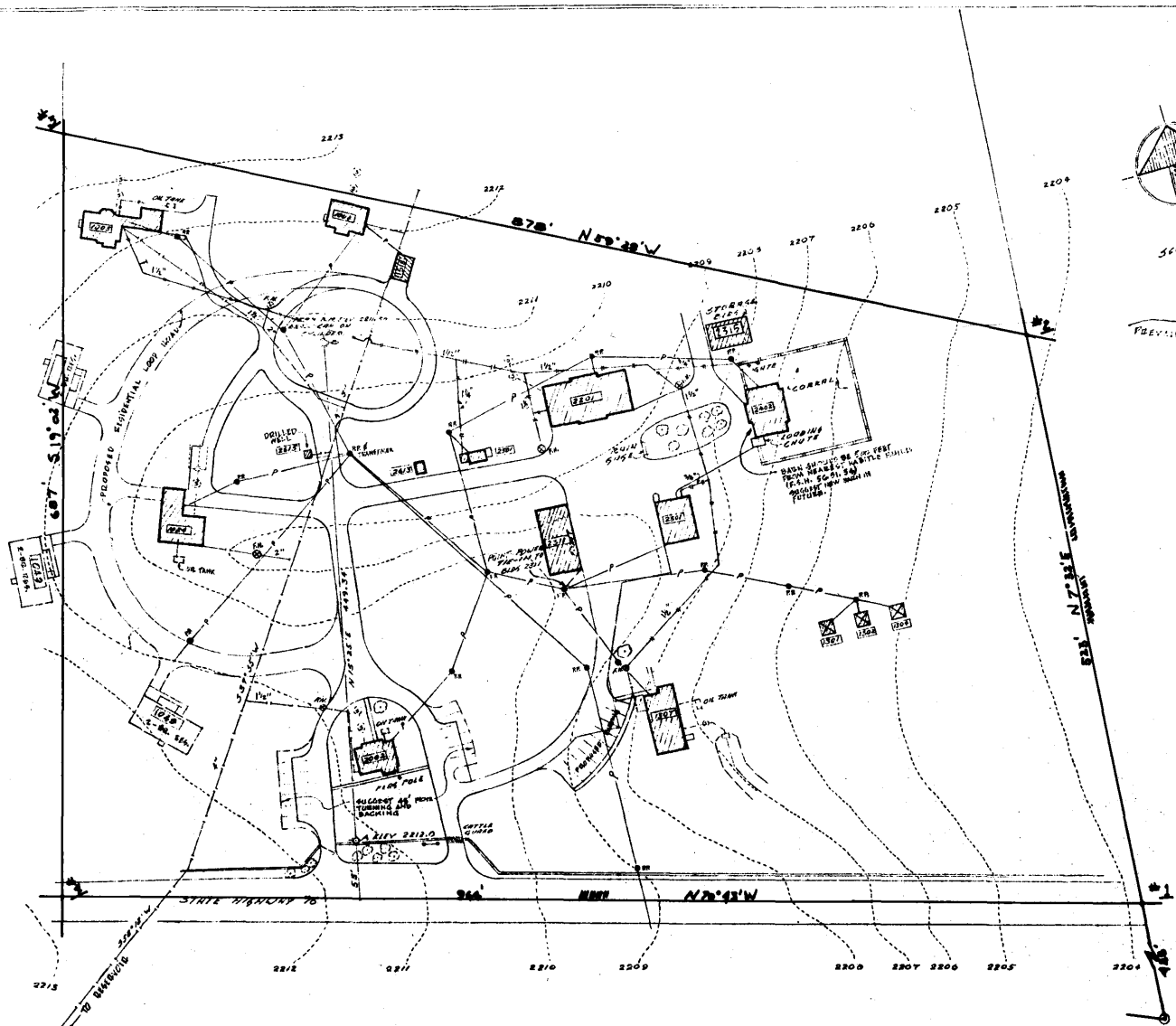
Item number

Page 6 of 6

VERBAL BOUNDARY DESCRIPTION

Early Winters "3-C" Administrative Site

Sections 23 and 26, T: 36N, R19E, W.M. Commencing at corner #12 H.E.S. #250 Okanogan County, Washington, thence 420 N7° 32' E to point #1, the center line of former State Highway #16 now vacated, thence 523 feet N 7° 32' E to point #2, thence 878 ft. N 59° 28' W to point #3, thence 687 ft. S 19° 02' W to point #4, thence 964 ft. N 70° 43' W to point #1, the point of beginning.



SITE PLAN SYMBOLS

- 2206 --- EXISTING CONTOUR
- 2" --- EXISTING WATER LINE & SIZE
- 2" --- PROPOSED WATER LINE & SIZE
- ⊙ P.M. FIRE HYDRANT
- ⊙ SEPTIC TANK
- P --- POWER LINES & POLES
- ⊙ DITCH MARK & ELEV.
- ⊙ EXISTING TREES

• LEGEND •

BUILD NO.	DESCRIPTION	A.S. PLAN NO.	PLAN NO.
2002	OFFICE	2218.0	109
1003	RES. HOUSE (BANKERS)	2218.1	210
1004	RESIDENCE (R.C.O.)	2218.2	321
1024	RESIDENCE (T.M.R.)	2218.3	
1307	CARR. HOUSE	2218.4	465
2301	GAS & OIL	2218.5	517
2301	W.D. HOUSE	2218.6	609
2301	W.D. HOUSE & GARAGE	2218.7	715
2402	BORN	2218.8	813
2613	PAINT HOUSE	2218.9	979
1301	BUNK HOUSE	2219.0	
1302	BUNK HOUSE	2219.1	
1304	BUNK HOUSE	2219.2	
2311	EQUIPMENT STORAGE 70X60'	2219.3	887 R.W. 2
1518	GARAGE (16X22 FOR BPS. 1004)	2219.4	(ADJUSTED)
2615	PUMP HOUSE	2219.5	
2315	STORAGE BUILDING	2219.6	
1048	RESIDENCE (PROPOSED)	2219.7	
1049	RESIDENCE (FUTURE)	2219.8	



NOTE: PROVIDE TRAFFIC GUARDS AT ALL PLACES NECESSARY TO CONFINE TRAFFIC TO DRIVeways & PARKING AREAS.
 REVISED APR. 21, 1964
 FROM 10667 149. W.B.K.

APPROVED:	DESIGNED BY:	DATE:
REC	DRN	DATE
0	APPROVED	DATE
E	APPROVED	DATE

U.S. DEPARTMENT OF AGRICULTURE
 FOREST SERVICE
OKANOGAN NATIONAL FOREST
 THE PACIFIC NORTHWEST REGION

SITE DEVELOPMENT PLAN
SABLY WINTERS RANGER STATION
 PASAYTEN RANGER DISTRICT
 SHAL. 23 W 26 II SEC. 16, R. 19 E. W.M.
 SCALE 1" = 50'