



Chase County

Clover Cliff Ranch House

Elmdale, Kansas

Cornelia Wyma Aug. 23, 1976

Kansas State Historical Society

View of the south facade from the
south

No. 1 78

NOV 9 1977

DEC 9 1976



Clover Cliff Ranch House

Elmdale, Kansas

Cornelia Wyma Aug. 23, 1976

Kansas State Historical Society

View of the west side from the
northwest

No. 2 28

DEC 9 1976

NOV 9 1977



CLOVERCLIFF
1883

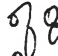
Clover Cliff Ranch House

Elmdale, Kansas

Larry Jochims July 2, 1975

Kansas State Historical Society

Detail of the date and name stone
from the south

No. 3 

NOV 9 1977

DEC 9

1976



Clover Cliff Ranch House

Elmdale, Kansas

Cornelia Wyma Aug. 27, 1976

Kansas State Historical Society

Detail of the main entry from
the south

No. 4 *78*

DEC 9 1976

NOV 9 1977

Chase Co.



Chase Co.

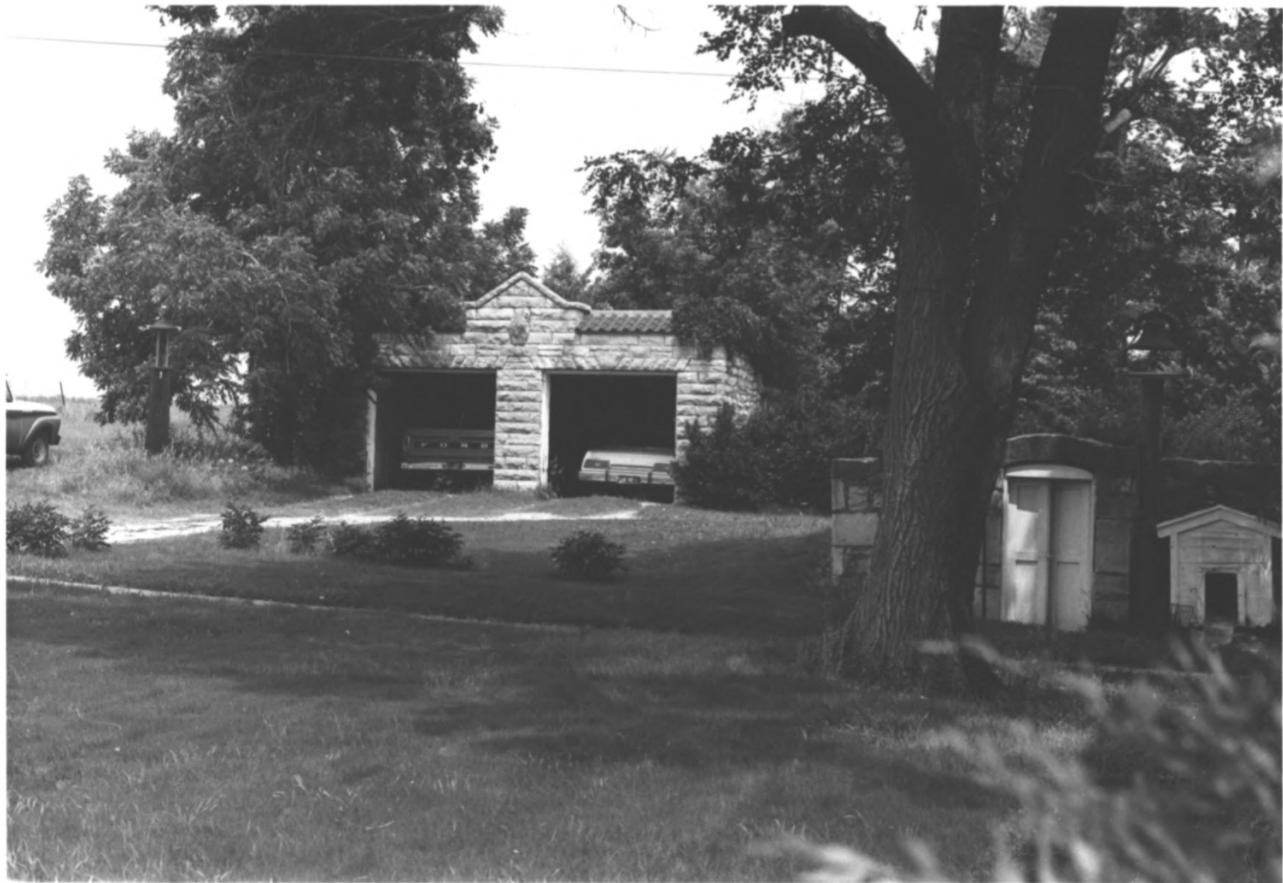
Clover Cliff Ranch House
Elmdale, Kansas

Larry Jochims July 2, 1975
Kansas State Historical Society
View of the smokehouse from the
southwest

DEC 9 1976

No. 5 of 8

NOV 9 1977



Chase Co.

Clover Cliff Ranch House

Elmdale, Kansas

Larry Jochims July 2, 1975

Kansas State Historical Society

View of garage from south

No. 6 078

DEC 9 1976

NOV 9 1977



PRATHOR RANCH ELMDALE KAN

Chase County

Clover Cliff Ranch House

Elmdale, Kansas

Unknown photographer and date

Photo archives, Kansas State

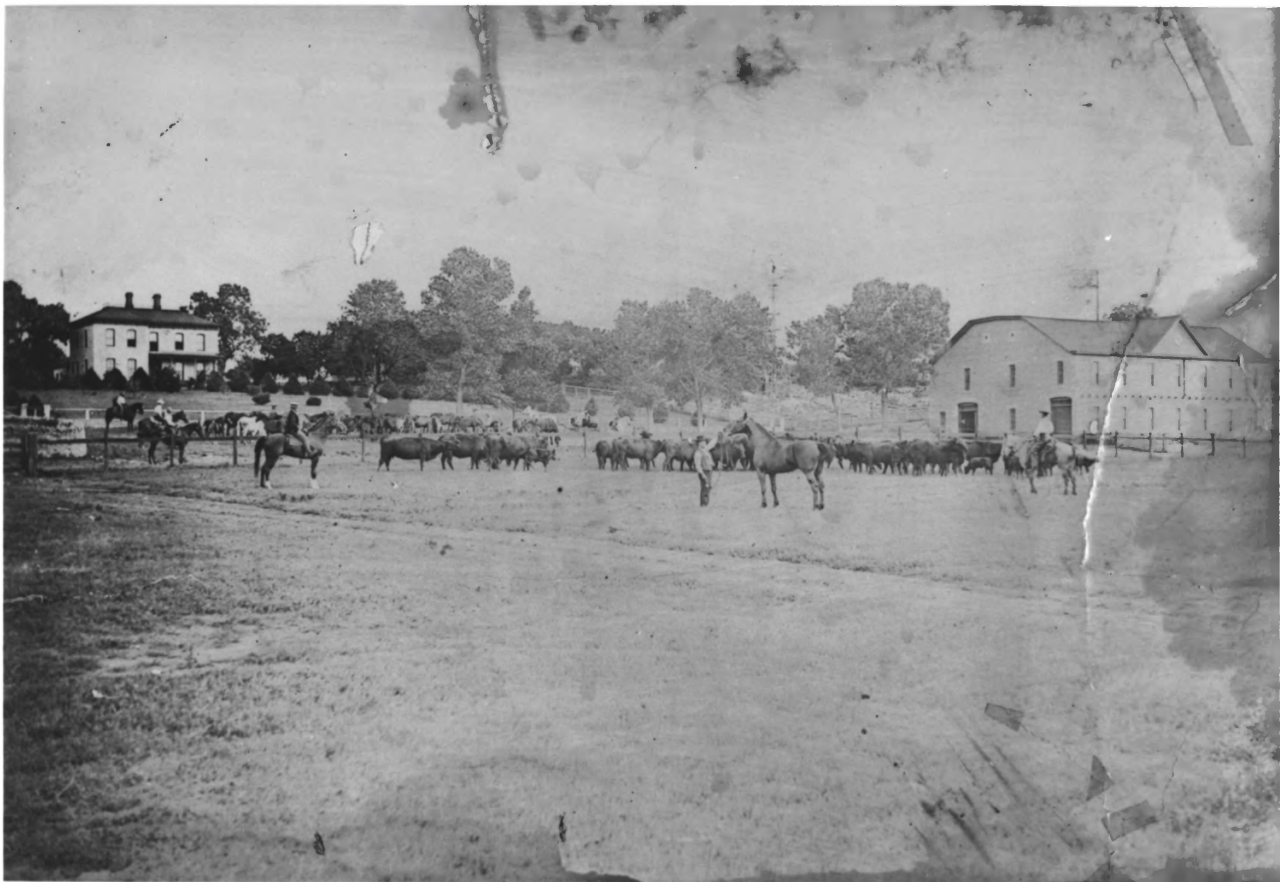
Historical Society

View from south around 1914

No. 7078

DEC 9 1976

NOV 9 1977



Chase County

Clover Cliff Ranch House

Elmdale, Kansas

Unknown photographer, ca. 1900

Photo archives, Kansas State

Historical Society'

View from south, barn to right no

longer stands

no. 8 78

DEC 9 1976

NOV 9 1977