

RECEIVED
APR 24 1990

825

NATIONAL REGISTER OF HISTORIC PLACES REGISTRATION FORM

This form is for use in nominating or requesting determinations of eligibility for individual properties or districts. See instructions in "Guidelines for Completing National Register Forms" (National Register Bulletin 16). Complete each item by marking "x" in the appropriate box or by entering the requested information. If an item does not apply to the property being documented, enter "N/A" for "not applicable." For functions, styles, materials, and areas of significance, enter only the categories and subcategories listed in the instructions. For additional space use continuation sheets (Form 10-900a). Type all entries.

1. Name of Property

historic name Robert Craig Plantation
other names/site number

2. Location

street & number 1504 Five Forks Trickum Road
city, town Lawrenceville (x) vicinity of
county Gwinnett code GA 135
state Georgia code GA zip code 30245

(n/a) not for publication

3. Classification

Ownership of Property:

- private
- public-local
- public-state
- public-federal

Category of Property

- building(s)
- district
- site
- structure
- object

Number of Resources within Property:

	<u>Contributing</u>	<u>Noncontributing</u>
buildings	1	1
sites	2	0
structures	0	0
objects	1	0
total	4	1

Contributing resources previously listed in the National Register: 0

Name of related multiple property listing: n/a

4. State/Federal Agency Certification

As the designated authority under the National Historic Preservation Act of 1966, as amended, I hereby certify that this nomination meets the documentation standards for registering properties in the National Register of Historic Places and meets the procedural and professional requirements set forth in 36 CFR Part 60. In my opinion, the property meets the National Register criteria. () See continuation sheet.

Elizabeth A. Lyon
Signature of certifying official

4/19/90
Date

Elizabeth A. Lyon
Deputy State Historic Preservation Officer,
Georgia Department of Natural Resources

In my opinion, the property () meets () does not meet the National Register criteria. () See continuation sheet.

Signature of commenting or other official

Date

State or Federal agency or bureau

5. National Park Service Certification

I, hereby, certify that this property is:

- entered in the National Register
- determined eligible for the National Register
- determined not eligible for the National Register
- removed from the National Register
- other, explain:
- see continuation sheet

Amy Federman 6/8/90

Signature, Keeper of the National Register Date

6. Function or Use

Historic Functions:

DOMESTIC:single dwelling
AGRICULTURE:agricultural field

Current Functions:

DOMESTIC:single dwelling

7. Description

Architectural Classification:

Mid-19th century
Other: Plantation Plain

Materials:

foundation stone
walls wood:weatherboard
roof asbestos
other

Description of present and historic physical appearance:

The c. 1830s Robert Craig Plantation consists of a two-story, frame, Plantation Plain main house with a modern garage, as well as the family cemetery (photographs 1,2,3,5,11). The Craig property is located along Five Forks Trickum Road near Lawrenceville, Gwinnett County, approximately 22 miles from Atlanta, Georgia. The main house has the typical floor plan, two rooms on each floor with a central hall and, on the first floor, a one-story front porch and a single story rear shed containing a kitchen and a den. There are brick end chimneys on the house and a historic iron fence in the front yard. On the interior, the house retains most of its original, unembellished workmanship including hand-planed wall, ceiling and floor boards, the original staircase, and doors. Its most elaborate details are the four historic mantels, two on each floor. The house rests on a fieldstone foundation on land which still includes several acres of woodland and pasture. Due to long ownership by the same family, the approximate location of many of the former outbuildings is known, giving the site archaeological potential. The property is located in a rapidly developing area of a fast-growing county. Changes to the house itself have been minimal: modernizing the heating and cooling systems, the kitchen, bathrooms, and adding a utility room.

The two-story house is five bays wide with a central doorway (photograph 1). The four paneled front entrance features a narrow transom and a line of windows along the top portion of the door. The front shed roof porch is approximately twelve feet deep and runs the full length of the house. The six porch supports are simple, square columns. The 9/9 windows are the original except in the rear addition of the house (photographs 6,10). Door and window trim is plain. The rear portion of the house is one-story high with a shed roof. The two

United States Department of the Interior
National Park Service

**National Register of Historic Places
Continuation Sheet**

Section 7

red brick end chimneys are five feet wide and two feet deep and are tapered towards the top (photographs 2,4).

The interior first floor arrangement contains a central foyer, two large rooms to either side of the foyer and a long narrow room along the rear. The foyer is a small dark room with doors to either side, an opening toward the back, and a narrow set of stairs. The foyer walls are faced with wide pine boards which varying in size from approximately 8 to 14 inches. Heart-pine flooring and six panel doors are throughout the original portion of the house. The four wooden fireplace mantels feature modest classical ornamentation (photographs 7,8,9,10). An opening in back of the foyer leads to the kitchen and den (photographs 4,5).

The house is of wood frame, mortise-and-tenon construction with forged metal nails. The foundation is fieldstone (photograph 6). The house sits on the peak of a rolling hill facing directly northwest. The area in front of the house is relatively clear, however, the property is ringed by hardwoods and pines. The rear property has large clearings with random pine growth. A historic iron fence borders a small section of the front yard (photographs 1,2,3). A small cemetery, located southwest of the house, includes the headstones of Robert Craig, his wife, and other family members (photograph 11).

8. Statement of Significance

Certifying official has considered the significance of this property in relation to other properties:

nationally statewide locally

Applicable National Register Criteria:

A B C D

Criteria Considerations (Exceptions): N/A

A B C D E F G

Areas of Significance (enter categories from instructions):

architecture
agriculture

Period of Significance:

1830s-1875

Significant Dates:

1830s

Significant Person(s):

n/a

Cultural Affiliation:

n/a

Architect(s)/Builder(s):

n/a

National Register of Historic Places
Continuation Sheet

Section 8

Significance of property, justification of criteria, criteria considerations, and areas and periods of significance noted above:

Narrative statement of significance (areas of significance)

The Craig Plantation is significant in agriculture and architecture as a mid-19th century prosperous farm. This property provides an excellent example of the type of early development found in Gwinnett County.

AGRICULTURE

The Robert Craig Plantation is significant in agriculture because it represents one of the last remaining, intact plantation establishments from the antebellum era in a county which is quickly becoming developed. It was from this plantation house tract that a moderate-sized cotton and corn plantation was operated under slave labor. While all the historic outbuildings indicative of the various activities which took place here are gone, their known locations add to the interpretation of its history. The plantation represents an antebellum diversified farming operation, at one point consisting of 2140 acres and 86 slaves at a total value of \$61,600. The house and remaining 23 acres are all that remain of this once thriving farm operation. The Craig Plantation produced a variety of crops including cotton, corn, and wheat. Horses, cattle, sheep, and hogs were also raised. The Craig Plantation represents one of the few remaining farm complexes in Gwinnett County that were commonly found in Georgia during the mid-19th century.

ARCHITECTURE

The property is significant in architecture because the main house is an excellent example of the Plantation Plain type house which was so popular in the late antebellum period in Georgia. Constructed c. 1830s, it was a type of house that small farmers and plantation owners could easily produce. The building shows the typical use of mortise-and-tenon frame construction. The house design is long and narrow with symmetrically arranged windows, porch columns, and two end chimneys. The interior floor plan contains a central foyer with two large rooms on either side. Two bedrooms are located upstairs. The interior ornamentation is minimal. The four fireplace mantels illustrate simple classical detailing. Heart-pine flooring is throughout the original part of the house. Portions of the foyer and upstairs also feature heart-pine paneling. In addition to the building's design, the plantation setting is a contributing factor which enhances the property's significance. The surrounding landscape--pasture land and woods--contributes to the character of the

National Register of Historic Places
Continuation Sheet

Section 8

historic resource, suggesting a setting similar to when it was an active farm. The historic iron fence and the small family cemetery also contribute to the historic farm scene. The Craig Plantation is characteristic of a mid-19th century prosperous farm property. The farmhouse, cemetery, and surrounding acreage provides an example of the type of southern plantation found in rural Georgia during the mid-1800s. The house is one of the few examples of Plantation Plain type architecture remaining in Gwinnett County.

National Register Criteria

These areas of significance support the property's eligibility under National Register Criteria A and C.

Under Criteria A, the property represents the broad patterns of history by its intact farm house, surrounding pasture land, and known sites of former outbuildings and slave cabins. The Craig plantation illustrates a typical rural farm found in central Georgia and exemplifies the type of farm layout used during the mid-19th century. Despite heavy development within Gwinnett County, the setting of the Craig Plantation has remained intact.

The property meets Criteria C because the Craig Plantation is a good example of a mid-19th century Plantation Plain type house. It displays a symmetrical facade, a two-story main house with one-story front and rear sheds, a low-pitched gable roof, and a central door with transom. The property possesses distinctive characteristics of a rural farm complex. The house is only one element representing the particular type and method of construction used during this time period. The surrounding field area, outbuilding sites, and family cemetery are all contributing factors to this historic farm setting.

Archaeology potential

The Robert Craig Plantation has the potential for archaeological artifacts from operating as a farm complex for over 100 years. The property may contain information about an active agricultural plantation with known sites of three barns measuring approximately 30'x 80', a large frame and clapboard barn, tenant houses, a loom room, two smokehouses, and an area where supposedly supplies were hidden during the Civil War. The sites of approximately 20 slave cabin sites are located within the pasture area behind the Craig house. These sites might yield information about 19th c. plantation lifestyles. However, it is not possible to fully document this information at this time and no formal archaeology has been done on the property.

National Register of Historic Places
Continuation Sheet

Section 8

Criteria Considerations (if applicable)

The Craig family cemetery is an integral part of this rural farm. The family cemetery is located approximately 400 feet from the plantation house. The ten family burials are marked by stone markers. Robert Craig and his wife are buried there, along with other family members.

Period of significance (justification, if applicable)

1830s - construction of the Robert Craig Plantation house.
1875 - death of Robert Craig

Contributing/Noncontributing Resources

Contributing

1 building (house)
2 sites (cemetery, landscape/farm setting)
1 object (fence)

Noncontributing

1 building (garage)

Developmental history/historic context (if applicable)

Robert Craig and his wife Nancy Adair Craig were early settlers in the southern part of Gwinnett County. According to a Gwinnett County history, the Craigs established their farm between 1822 and 1827 on land located about 2.5 miles southwest of Lawrenceville. The construction date of their Plantation Plain type farmhouse is estimated in the early 1830s. The house became the focal point of a thriving plantation where cotton, corn, and wheat were harvested and horses, cattle, sheep and hogs were raised.

The first indication as to the size of the Craig Plantation is in a Gwinnett County Tax Digest of 1860, which accounts for 1600 acres and 66 slaves totaling \$59,900. The Gwinnett County Tax Digest of 1861 indicates Craig owning 2140 acres and 86 slaves at a total value of \$61,600. The Gwinnett County Tax Digest of 1864 shows Craig plantation totaling 1600 acres, 70 slaves at a value of \$106,390.

Robert Craig was considered one of the most successful planters that ever lived in the county. J. C. Flanigan's History of Gwinnett

**National Register of Historic Places
Continuation Sheet**

Section 8

County indicates that Craig "worked hard, lived frugally, accumulated a competency, and left a large estate to his sons and daughters. It was not unusual for him to gather 104 horse loads of corn on his plantation that extended eight or ten miles across the county..." Robert Craig also served as one of the road commissioners who cut the road from Stone Mountain to Hudson's store in the Yellow River Community.

Robert Craig died in 1875 and is buried in the family cemetery. The property remained in the hands of the Craig family until June, 1960 when it was purchased by a Don Martin. Martin subsequently sold it to the current owner, William Matthews in December, 1960.

According to descendants of Robert Craig, approximately 20 slave cabin foundations were still standing until the 1940s-50s.

9. Major Bibliographic References

Govin, Georgina. "Historic Property Information Form - Robert Craig Plantation." 1986. On file at the Historic Preservation Section, Georgia Department of Natural Resources, Atlanta, Georgia.

Hughes, Phyllis K. Gwinnett Historical Society, Inc., Lawrenceville, Georgia. Telephone interview by Lisa Raflo, March 23, 1990.

Previous documentation on file (NPS): (x) N/A

- () preliminary determination of individual listing (36 CFR 67) has been requested
- () previously listed in the National Register
- () previously determined eligible by the National Register
- () designated a National Historic Landmark
- () recorded by Historic American Buildings Survey #
- () recorded by Historic American Engineering Record #

Primary location of additional data:

- (x) State historic preservation office
- () Other State Agency
- () Federal agency
- () Local government
- () University
- () Other, Specify Repository:

Georgia Historic Resources Survey Number (if assigned):

10. Geographical Data

Acreage of Property 23 acres

UTM References

- A) Zone 16 Easting 775620 Northing 3756760
- B) Zone 16 Easting 775760 Northing 3756920
- C) Zone 16 Easting 775950 Northing 3756260
- D) Zone 16 Easting 776060 Northing 3756690

Verbal Boundary Description

The National Register property includes the house, one modern outbuilding, the Craig family cemetery, and the property surrounding them. The property is marked on the enclosed sketch map.

Boundary Justification

The nominated property is all that has remained associated with the house and which is owned by the current owner at this location with the addition of the family-owned cemetery lot.

11. Form Prepared By

name/title Lisa Raflo, National Register Researcher
organization Historic Preservation Section, Georgia Department of Natural Resources
street & number 205 Butler Street, S.E., Suite 1462
city or town Atlanta **state** Georgia **zip code** 30334
telephone 404-656-2840 **date** April 18, 1990

**United States Department of the Interior
National Park Service**

**National Register of Historic Places
Continuation Sheet**

Photographs _____ Page 1
Section number _____

Robert Craig Plantation
Lawrenceville, Gwinnett County, Georgia
Photographer: James R. Lockhart
Negative filed with the Georgia Department of Natural Resources
Date photographed: October 1989

Description:

1 of 11: Front facade view of the Robert Craig house and surrounding landscape; photographer facing southeast.

2 of 11: Front facade and northeast side facade view and the historic iron fence; photographer facing south.

3 of 11: Front facade and southwest side facade view of the Robert Craig house, also includes the historic iron fence; photographer facing east.

4 of 11: Rear facade view of the Robert Craig house, includes rear one-story, 1960s addition; photographer facing north.

5 of 11: Rear facade view of the Robert Craig house and garage ; photographer facing west.

6 of 11: Brick end chimney and fieldstone foundation of the Robert Craig house, photographer facing northeast.

7 of 11: Interior view of living room, classically inspired mantel piece; photographer facing north.

8 of 11: First floor bedroom; photographer facing west.

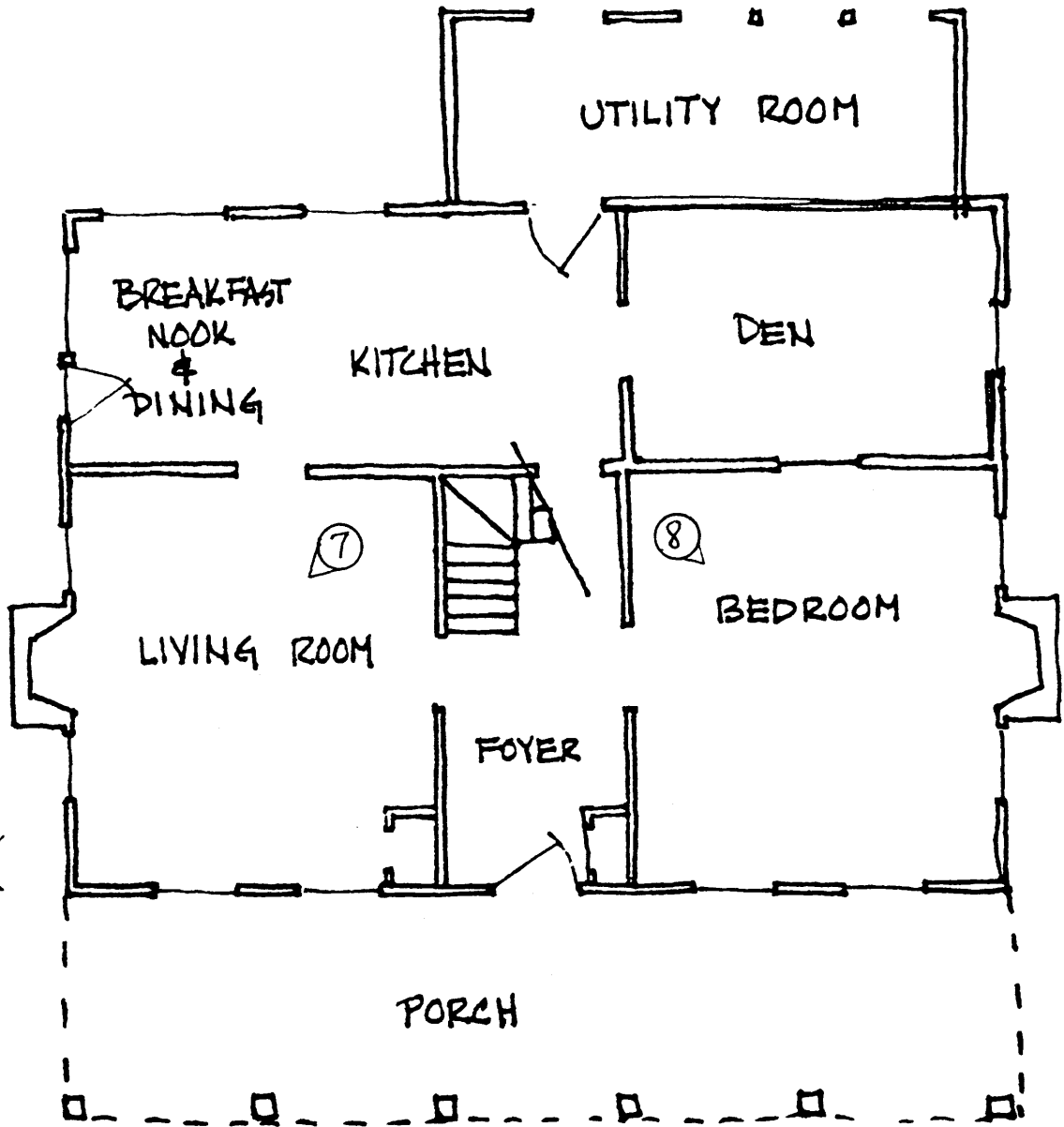
9 of 11: Second floor bedroom; photographer facing south.

10 of 11: Second floor bedroom, 9/9 pane windows; photographer facing north.

11 of 11: Craig family cemetery; photographer facing south.

5

4



6

NORTH

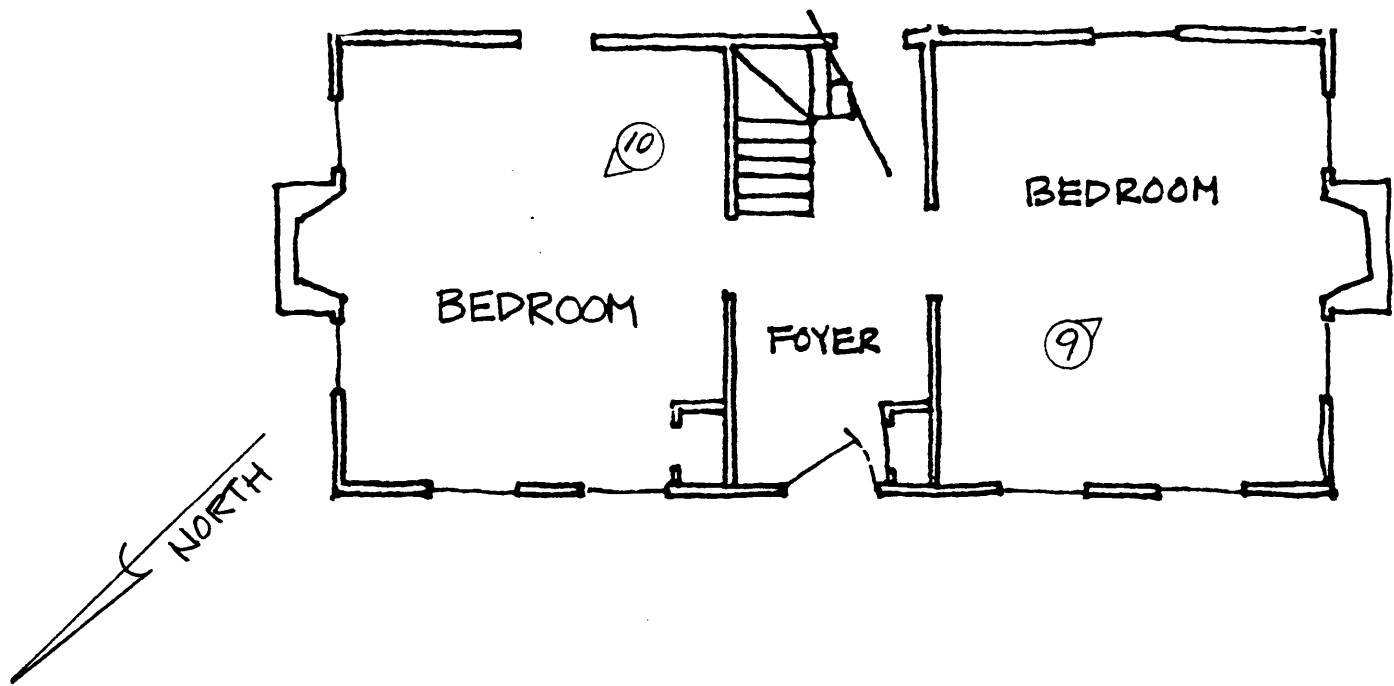
PLAN PREPARED
 BY
 GEORGINA GOVIN

Robert Craig Plantation,
 Lawrenceville, Gwinnett County,
 Georgia

FLOOR PLAN - First Floor
 Scale: none
 Photos: indicated by




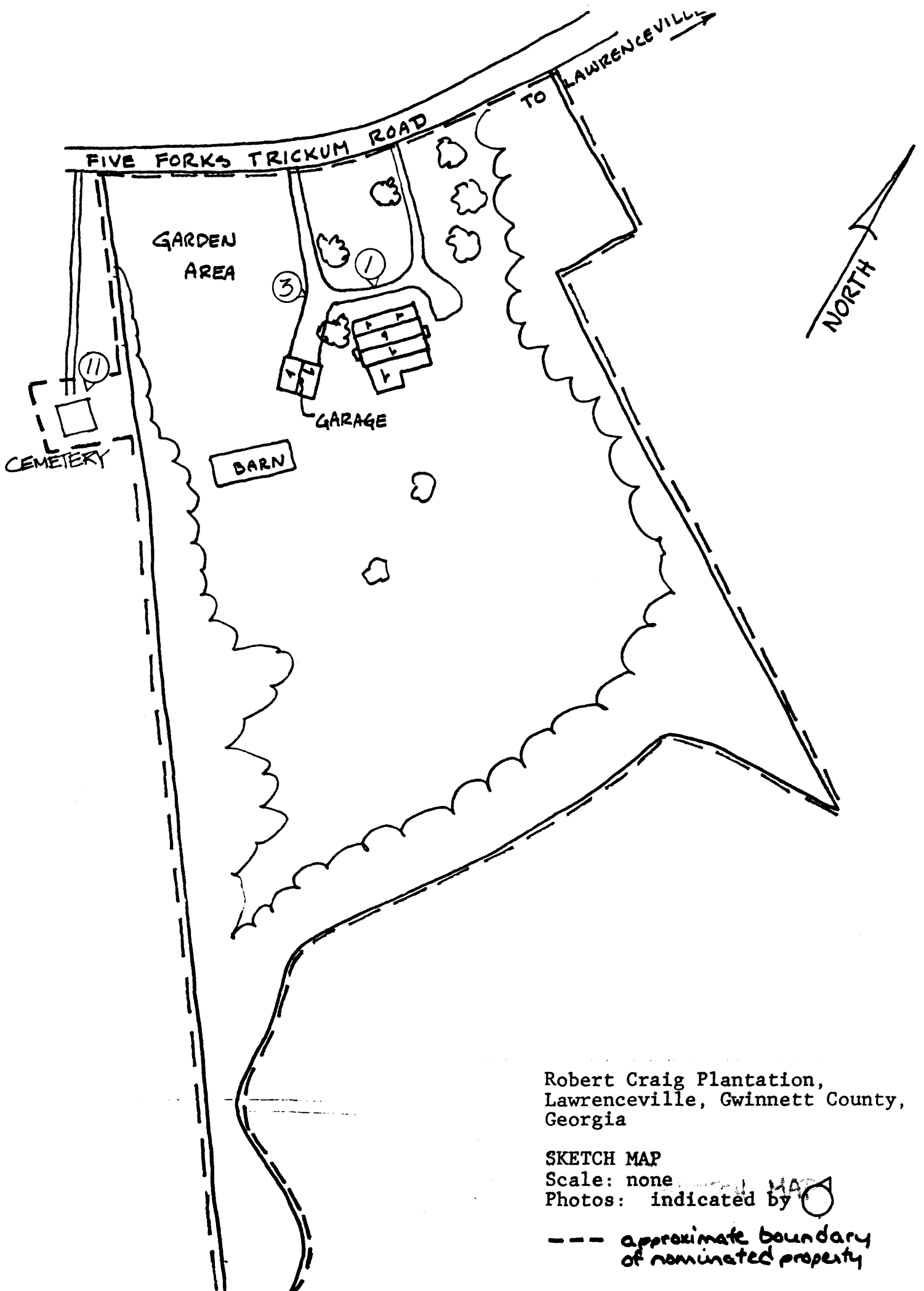
2



PLAN PREPARED
BY
GEORGINA GOVIN

Robert Craig Plantation,
Lawrenceville, Gwinnett County,
Georgia


FLOOR PLAN - Second Floor
Scale: none
Photos: indicated by 



Robert Craig Plantation,
Lawrenceville, Gwinnett County,
Georgia

SKETCH MAP

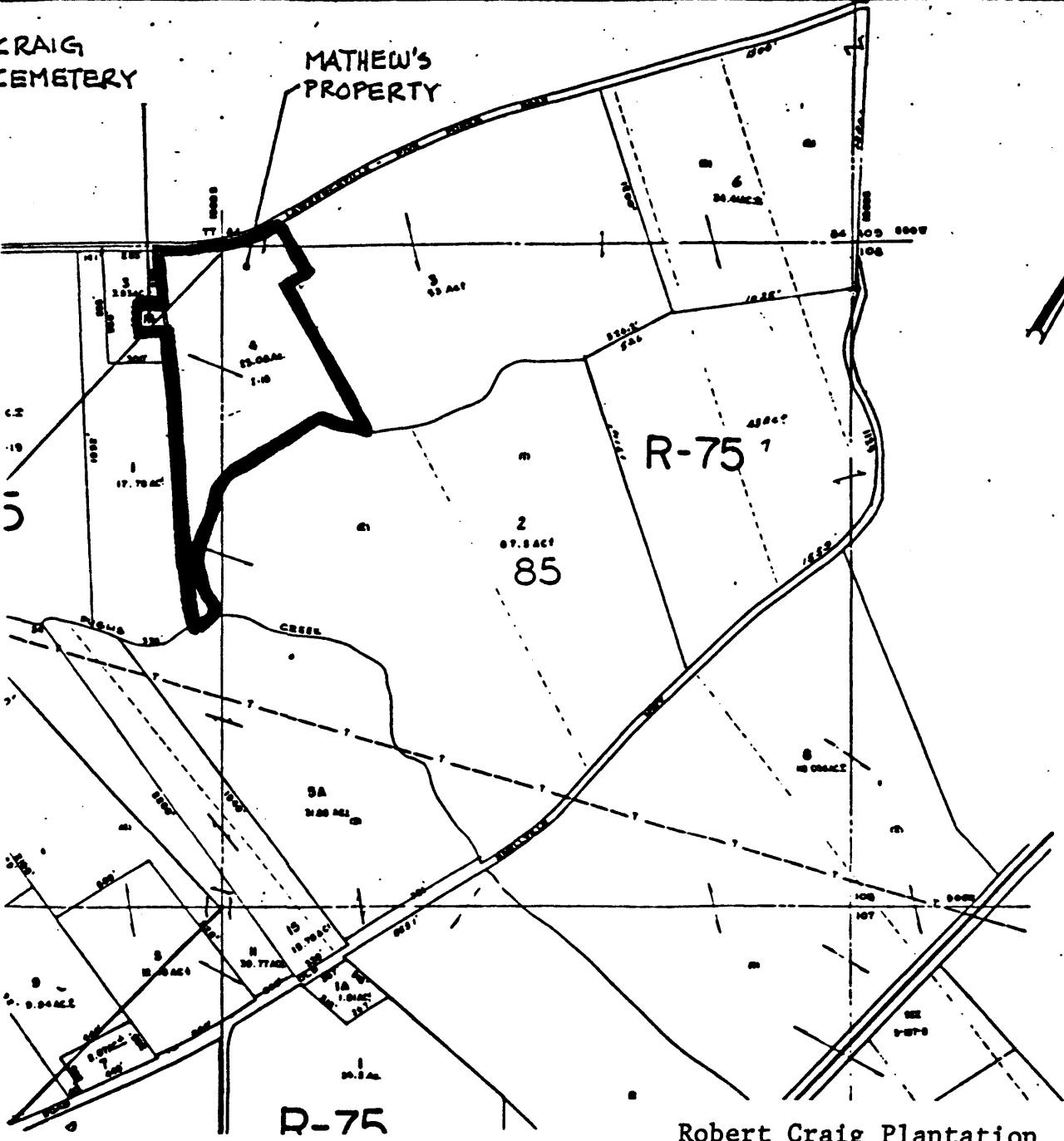
Scale: none

Photos: indicated by 

--- approximate boundary
of nominated property

CRAIG
CEMETERY

MATHEW'S
PROPERTY



Robert Craig Plantation,
Lawrenceville, Gwinnett County,
Georgia

PLAT MAP
Scale: 1" _____ 880'
Property Boundary: **_____**