



LONSDALE HISTORIC DISTRICT  
Cumberland and Lincoln, Rhode Island

Date: 1980

Photographer: Pamela Kennedy

Negative filed at: Rhode Island Historical  
Preservation Commission  
150 Benefit Street  
Providence, RI 02903

View: Mill #3, the earliest extant mill at Lonsdale;  
north side showing single remaining rubblestonw  
ell at center, second ell rebuilt in brick at  
right.

Photo #1

#1



24  
LONSDALE HISTORIC DISTRICT  
Cumberland and Lincoln, Rhode Island

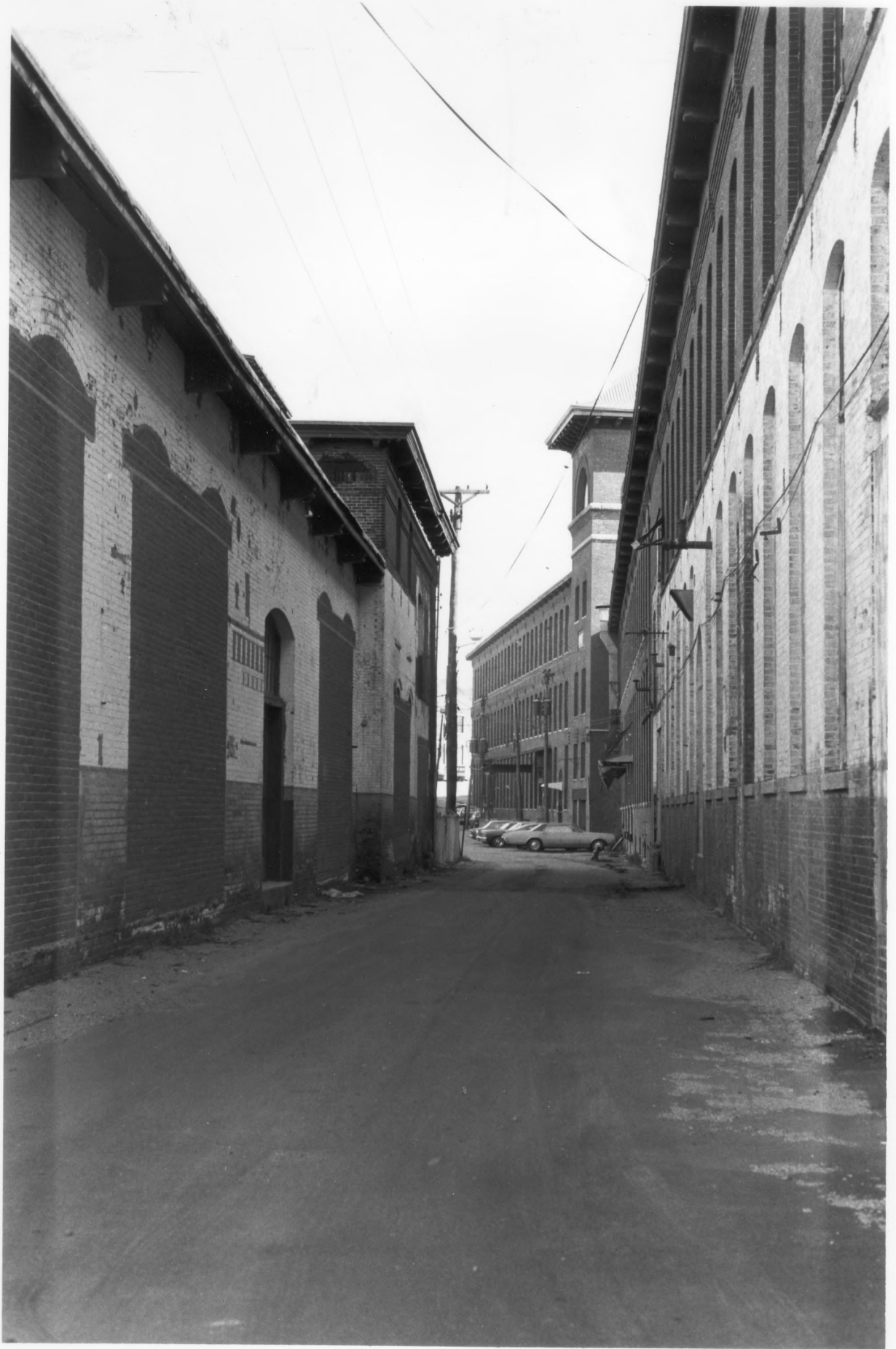
Date: 1980

Photographer: Pamela Kennedy

Negative filed at: Rhode Island Historical  
Preservation Commission  
150 Benefit Street  
Providence, RI

View: Lonsdale Mill (1901), from southeast corner,  
showing center tower and curve of the building  
line.

Photo #2



LONSDALE HISTORIC DISTRICT  
Cumberland and Lincoln, Rhode Island

Date: 1980

Photographer: Pamela Kennedy

Negative filed at: Rhode Island Historical  
Preservation Commission  
150 Benefit Street  
Providence, RI

View: Passageway between 1901 Lonsdale Mill (right)  
and auxiliary buildings (left).

Photo #3

#3



12#  
LONSDALE HISTORIC DISTRICT  
Cumberland and Lincoln, Rhode Island

Date: 1980

Photographer: Pamela Kennedy

Negative filed at: Rhode Island Historical  
Preservation Commission  
150 Benefit Street  
Providence, RI

View: Lonsdale Mill Office (probably 1901).

Photo #4





54  
LONSDALE HISTORIC DISTRICT  
Cumberland and Lincoln, Rhode Island

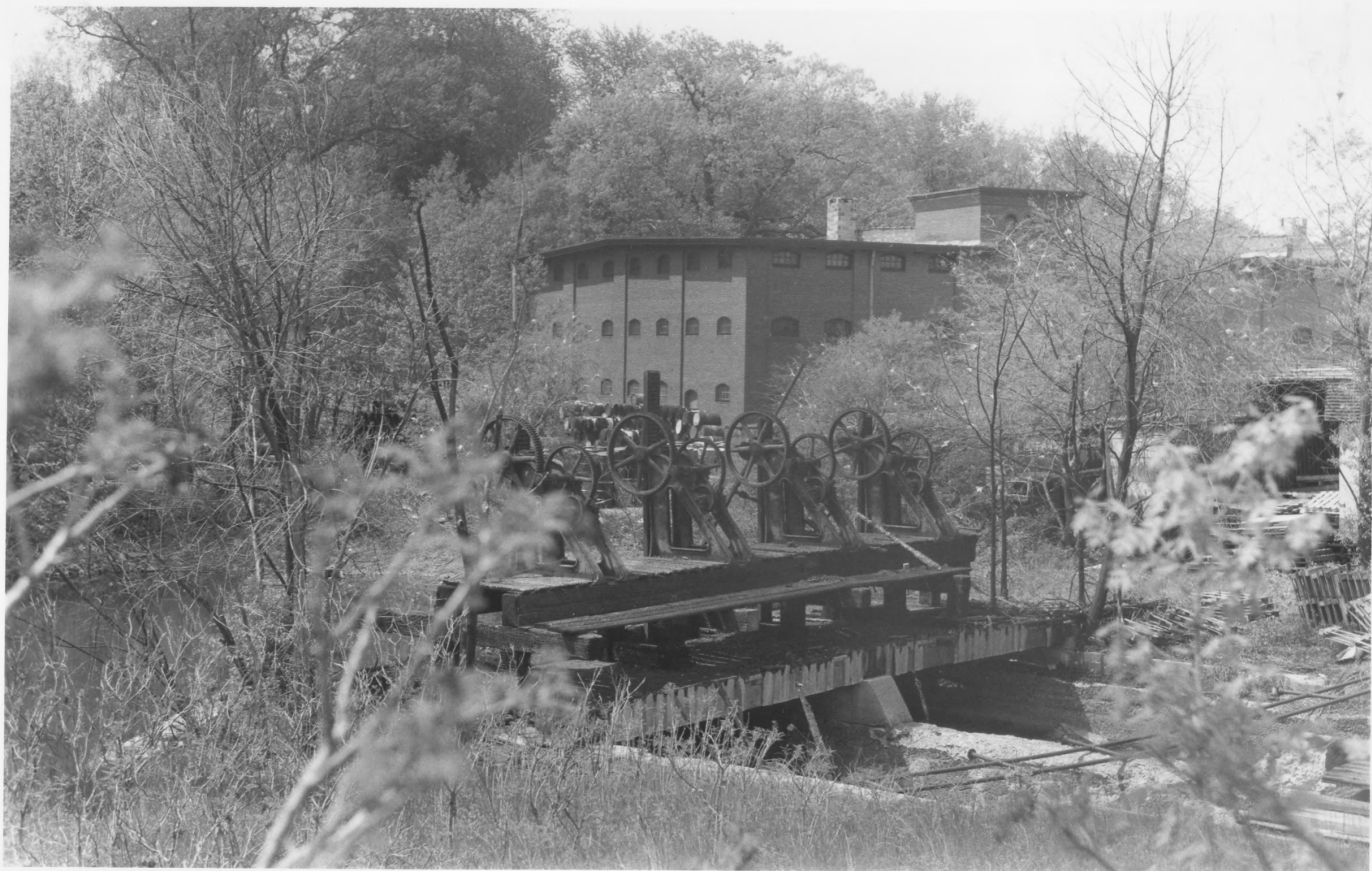
Date: 1980

Photographer: Pamela Kennedy

Negative filed at: Rhode Island Historical  
Preservation Commission  
150 Benefit Street  
Providence, RI

View: Vacant mill at Lonsdale; set over the mill  
canal, the structure appears to have been  
part of the company's bleaching and dyeing  
operations.

Photo #5



7\*

LONSDALE HISTORIC DISTRICT  
Cumberland and Lincoln, Rhode Island

Date: 1980

Photographer: Pamela Kennedy

Negative filed at: Rhode Island Historical  
Preservation Commission  
150 Benefit Street  
Providence, RI

View: Watergate at Lonsdale; built over the power canal, the gate controlled the flow of water through the canal; the gatehouse has not survived and the hoists are now exposed to the weather. Lonsdale Warehouse in the background.

Photo #6



#7  
LONSDALE HISTORIC DISTRICT  
Cumberland and Lincoln, Rhode Island

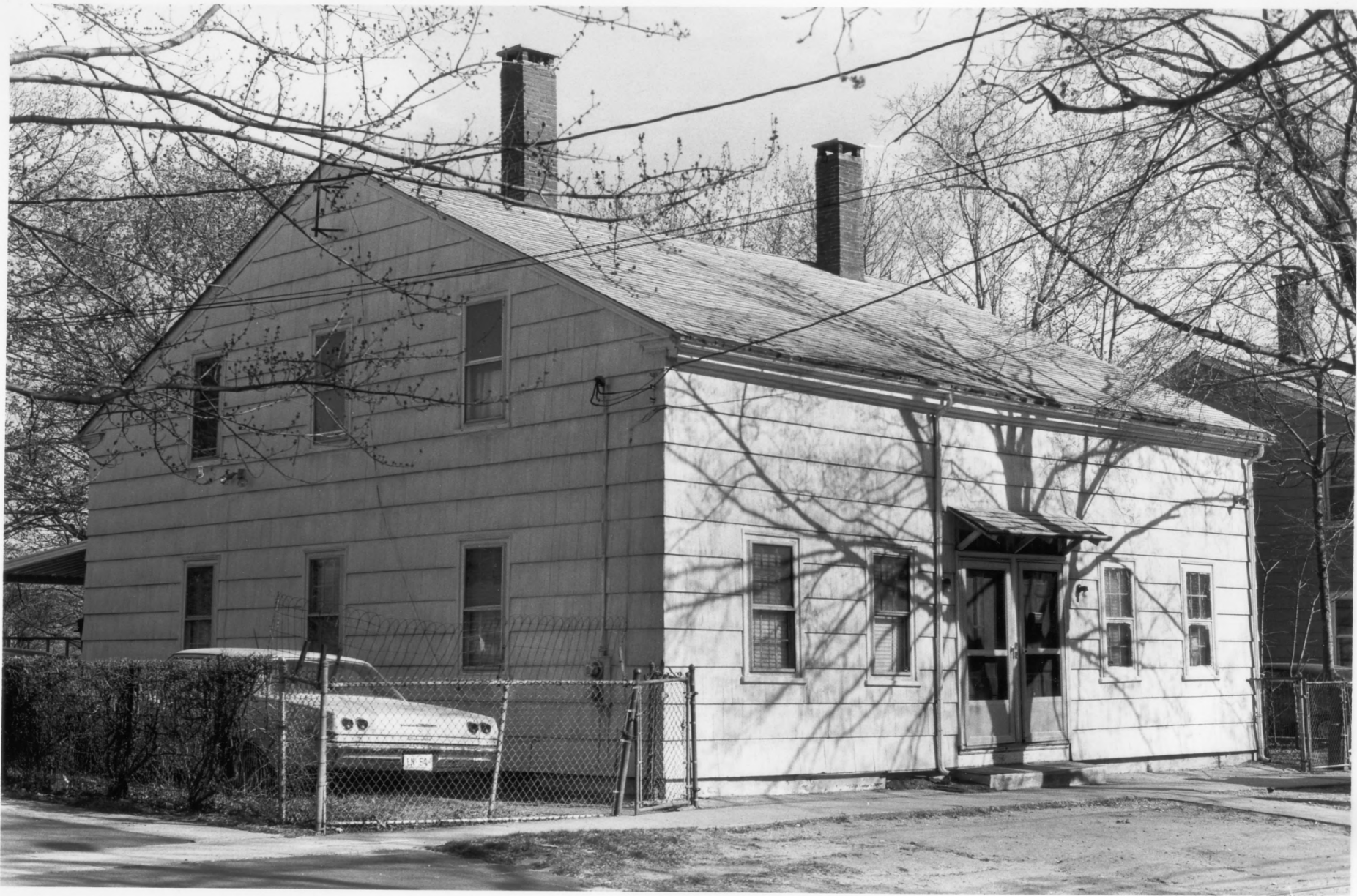
Date: 1980

Photographer: Pamela Kennedy

Negative filed at: Rhode Island Historical  
Preservation Commission  
150 Benefit Street  
Providence, RI

View: Lonsdale Dam and Railroad Bridge, from the  
Lincoln side, looking toward Cumberland.  
The rail line is carried atop the dam.

Photo #7



LONSDALE HISTORIC DISTRICT  
Cumberland and Lincoln, Rhode Island

Date: 1980

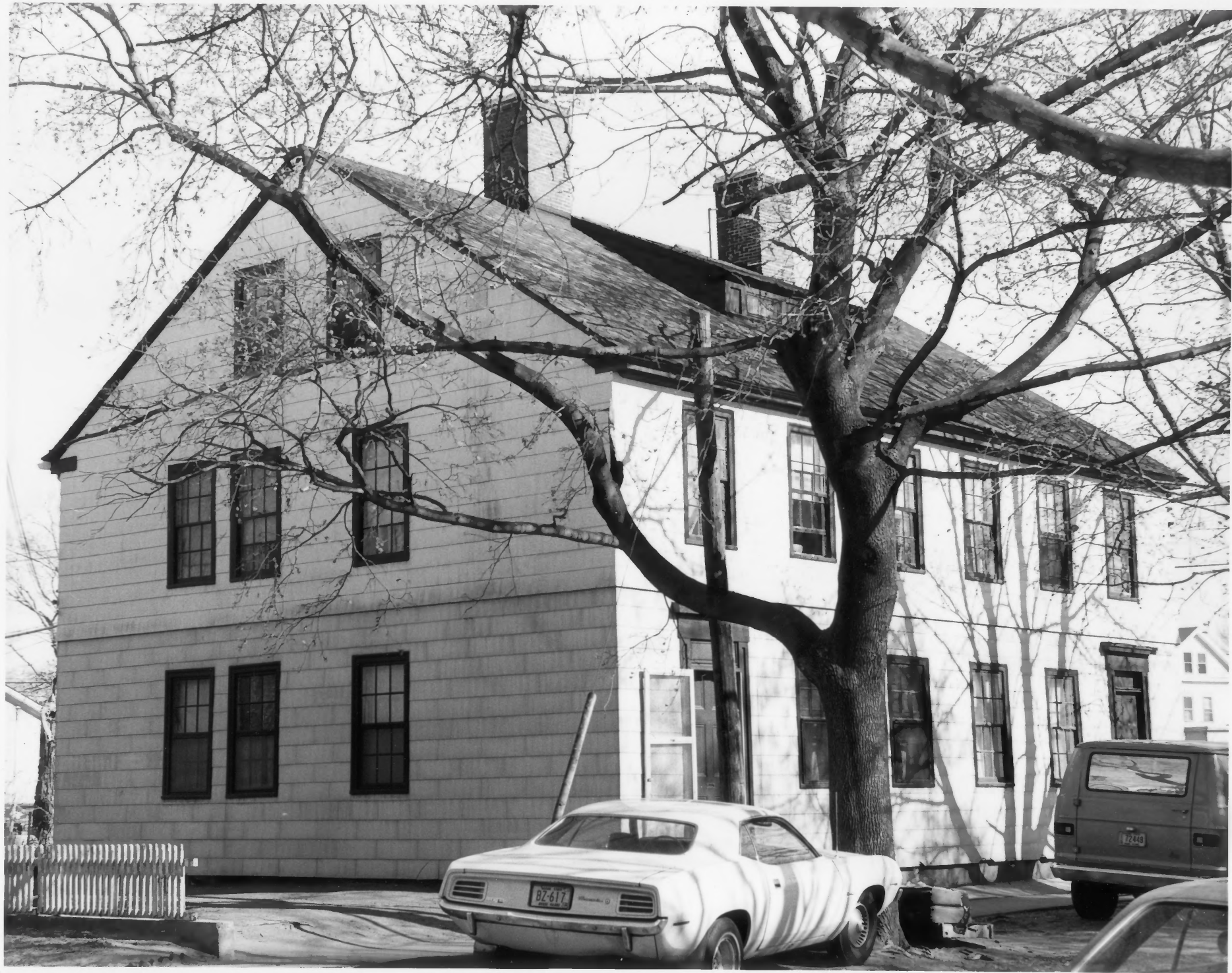
Photographer: Pamela Kennedy

Negative filed at: Rhode Island Historical  
Preservation Commission  
150 Benefit Street  
Providence, RI

View: 117-119 Main Street (Lincoln), from the  
northwest.

Photo #8





64

LONSDALE HISTORIC DISTRICT  
Cumberland and Lincoln, Rhode Island

Date: 1980

Photographer: Pamela Kennedy

Negative filed at: Rhode Island Historical  
Preservation Commission  
150 Benefit Street  
Providence, RI

View: 109-111 Main Street (Lincoln), from the  
northwest.

Photo #9



7/4

LONSDALE HISTORIC DISTRICT  
Cumberland and Lincoln, Rhode Island

Date: 1980  
Photographer: Pamela Kennedy  
Negative filed at: Rhode Island Historical  
Preservation Commission  
150 Benefit Street  
Providence, RI

View: Lonsdale Baptist Church, Lonsdale Avenue  
(Lincoln), from the northeast.

Photo #10



11/4

LONSDALE HISTORIC DISTRICT  
Cumberland and Lincoln, Rhode Island

Date: 1975

Photographer: Walter Nebiker

Negative filed at: Rhode Island Historical  
Preservation Commission  
150 Benefit Street  
Providence, RI

View: The Ann & Hope Mill, Mill Street (Cumberland),  
from the northwest.

Photo #11



7/12

LONSDALE HISTORIC DISTRICT  
Cumberland and Lincoln, Rhode Island

Date: 1975

Photographer: Walter Nebiker

Negative filed at: Rhode Island Historical  
Preservation Commission  
150 Benefit Street  
Providence, RI

View: Lonsdale Tenements, later Warehouses, off  
Cross Street (Cumberland), from the southwest.

Photo #12





CROSS # 1 ROAD

NORTH  
R.I.  
114  
→

#13

LONSDALE HISTORIC DISTRICT  
Cumberland and Lincoln, Rhode Island

Date: 1975

Photographer: Walter Nebiker

Negative filed at: Rhode Island Historical  
Preservation Commission  
150 Benefit Street  
Providence, RI

View: Lonsdale Mill Houses, west side of Broad  
Street, from southeast.

Photo #13



#14

LONSDALE HISTORIC DISTRICT  
Cumberland and Lincoln, Rhode Island

Date: 1975

Photographer: Walter Nebiker

Negative filed at: Rhode Island Historical  
Preservation Commission  
150 Benefit Street  
Providence, RI

View: Lonsdale Overseers' Houses, south side of  
Blackstone Street, from northwest.

Photo #14



#15

LONSDALE HISTORIC DISTRICT  
Cumberland and Lincoln, Rhode Island

Date: 1975

Photographer: Walter Nebiker

Negative filed at: Rhode Island Historical  
Preservation Commission  
150 Benefit Street  
Providence, RI

View: Lonsdale Mill Houses, north side of Blackstone  
Terrace, from wouthwest.

Photo #15



LONSDALE HISTORIC DISTRICT  
Cumberland and Lincoln, Rhode Island

Date: 1975

Photographer: Walter Nebiker

Negative filed at: Rhode Island Historical  
Preservation Commission  
150 Benefit Street  
Providence, RI

View: Lonsdale Superintendant's House, corner of  
Blackstone and Broad Streets, from southwest.

Photo #16