

DEC 12 1988

3187

DEC 13 1988

KENTUCKY HISTORIC RESOURCES INVENTORY

Site No. Jo-63

1. Historic Name(s) **Flat Gap School**

Original Owner _____

2. Present Name **Flat Gap Elementary**

3. Location **Flat Gap, Ky.**

4. Owner's Name **Johnson County Board of Education**

5. Owner's Address **Paintsville, Ky.**

22. ADD/County **BIG SANDY / JOHNSON** 0 5 8

23. U.S.G.S. Quadrant (15'/75') **Redbush** G.I.S. Mod.

24. UTM Reference 1 7 | 3 3 4 1 4 0 | 4 2 0 0 2 4 0

Zone Easting Northing

25. Coordinate Accuracy

26. Prehistoric Site Object
Historic Site Structure
 Building Other

6. Open to Public Yes No

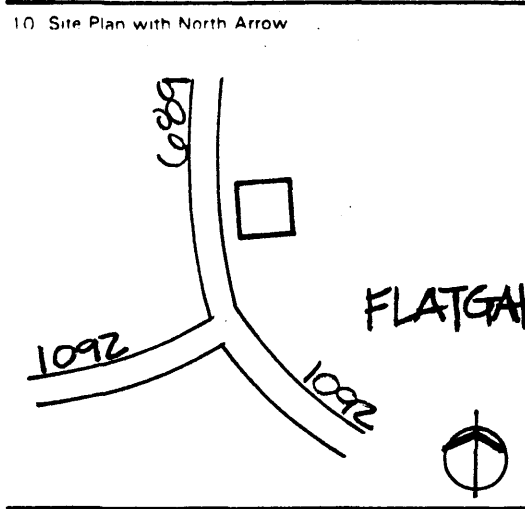
7. Visible from road Yes No

8. Ownership Private
Local
State
Federal

9. Local Contact/Organization **JOHNSON COUNTY HISTORIC SITES SURVEY COMMITTEE**

27. National Register District Name:

28. Significance Evaluation **National Register Crit.** D



11. Architect **Unknown**

12. Builder **WPA**

13. Date **1936-38** A. B.

14. Style A. WPA
B. Class. Revival

15. Original Use **School** I

16. Present use **Same**

17. Condition **Good** B

29. Status Date _____

National Landmark

National Register

Landmark Certificate

Kentucky Survey

Local Landmark

HABS/HAER

30. Historic Theme Primary
Secondary
Other

31. Endangered Yes
No

32. Preservation Project Status

18. Description

Facade divided into three major sections by projecting central bay; side bays composed of sections of three windows each; ashlar stone; flat roof; central entrance flanked by rounded stone columns and elongated rectangular windows

To the rear is a more recent one story concrete block addition which does not intrude on the view of the front.

(Continue on Back)

No. Stories **2** C

Single Pile _____ NA

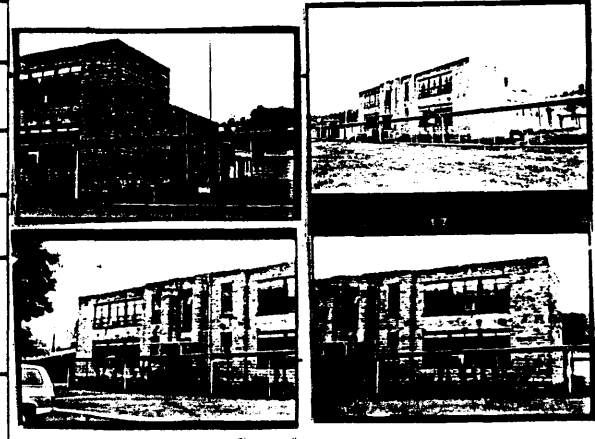
Double Pile _____

Floor Plan **NA**

Structural Fabric **Stone** A. B.

Decorative Fabric **Ashlar bond** A. B.

Roof Form **Flat**



19. History

This building was erected by the WPA about 1936-38. There was a Flat Gap Academy much earlier. On March 3, 1884, a board of directors was appointed incorporating the Flat Gap High School Company

Roll No. **6**

Picture No. **25-27**

Direction **13: 17-19**

34. Prepared by: **HELEN POWELL**

20. Significance The Flat Gap Elementary School is significant under Criterion C because of the architectural elements it displays through its association with the Works Progress

35. Organization **CARMAN AND POWELL, INC.**

36. Date **1983**

21. Source of Information **Administration, a national Federal aid program from 1930-1941.**
Pat Patton

37. Revision Dates _____ 38. Staff Review _____

**KENTUCKY HISTORIC RESOURCE INVENTORY SUPPLEMENT
BOUNDARY AND LOCATION INFORMATION**

Historic Property Name Flat Gap School Site # Jo-63

Multiple Resource/Thematic Nomination Title MULTIPLE RESOURCES OF JOHNSON COUNTY

U.T.M. Coordinates - List multiple UTMs if property is ten or more acres.

A. _____ D. _____

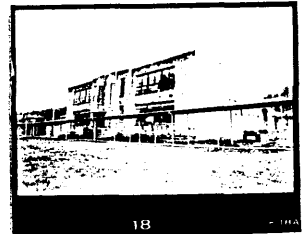
B. _____ E. _____

C. _____ F. _____

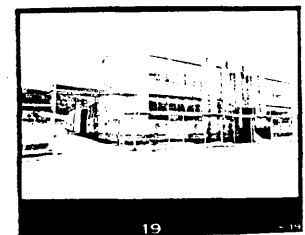
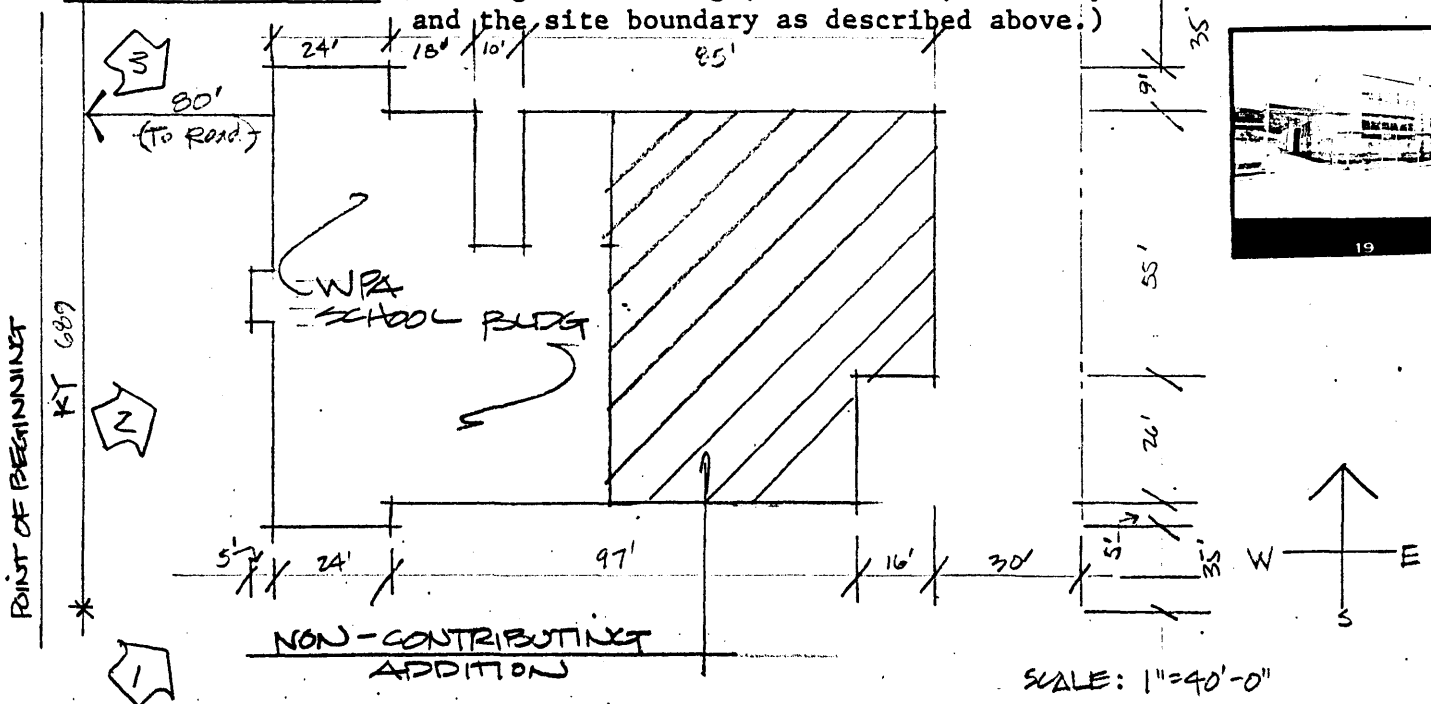
Verbal Boundary Description _____ Acreage .94

From a point in the right of way of KY 689, then east 247 feet to a point; then north 165 feet to a point; then west 247 feet to a point; then south 165 feet to the point of beginning.

The boundary includes all of the space associated with the school and includes one contributing building.



Sketch of Site Plan (Showing outbuildings, structures, landscape features and the site boundary as described above.)



Official Courthouse Property Reference:

United States Department of the Interior
National Park ServiceNational Register of Historic Places
Continuation SheetEast Main Street Historic District
Wilmore-Jessamine County, KentuckySection number 7 Page 9

and warehouse building completed in 1919. A one-story building housing the scales was located in what is now a parking lot between the office/warehouse and the railroad. The milling company used the first floor of the south side of the building facing E. Main as an office. The remainder of the building served as a flour and feed warehouse until Glass Milling sold the building to Asbury College in 1937. In the early twentieth century, East Main Street was known as the Glass Mill Turnpike. See the history of Glass Mill in Section 8.

The City of Wilmore bought the building for use as a City Hall and Police Department headquarters in 1973. Both the south and east-facing facades of this two story, five-bay, Tyrone limestone building are visible from E. Main Street. Window openings on the first floors of both facades have been reduced in size.

South side of East Main Street (from east to west)13. 334 E. Main Street.

Wilmore Mercantile, a general store incorporated in 1910 with J.R. Dorman as president, owned this building from 1914 until 1919. The two-story, three-bay building is the only commercial building in Wilmore with arched windows in the upper story. The first floor display windows are protected by a flat-roofed porch supported by slender metal columns. The first floor storefront retains the original central entrance flanked by display windows. The windows' size and the material around them have been altered by the use of modern materials.

14. 330 E. Main Street.

Modern metal sheeting covers the original facade of this one-story, three-bay, brick building. It retains the original central recessed entry, but has modern plate glass display windows.

15. 328 E. Main Street.

This one-story, three-bay, brick building retains its central entrance and display windows which have clerestories. Modern metal covers the exterior.

16. 324-326 E. Main Street.

This two story, four-bay, brick building retains the original openings for display windows and its metal posts. The second story windows have stone lintels and sills.