



#A-1 OFFICE

Clackamas Lake Ranger Station, Historic District
Government Camp, Oregon

Photographer: S. Couche, August 1979,
U.S. Forest Service

Camera Direction: North toward south and east
elevation.

Clackamas County

MAR 11 1981

APR 22 1981



#B-1 PROTECTIVE ASSISTANT'S RESIDENCE

Clackamas Lake Ranger Station, Historic District
Government Camp, Oregon

Photographer: S. Couche, August 1979,
U.S. Forest Service

Camera Direction: West toward east and north
elevations.

Clackamas MAR 11 1981
County APR 22 1981



#E-1 DISTRICT RANGER'S RESIDENCE

Clackamas Lake Ranger Station, Historic District
Government Camp, Oregon

Photographer: S. Couche, August 1979,
U.S. Forest Service

Camera Direction: East toward west and north
elevations.

Clackamas County

MAR 11 1981

APR 22 1981



#E-2 DISTRICT RANGER'S RESIDENCE

Clackamas Lake Ranger Station, Historic District
Government Camp, Oregon

Photographer: S. Couche, August 1979,
U.S. Forest Service

Camera Direction: South toward east elevation.

*Clackamas
County*

MAR 11 1981
MAR 2 1981



#E-3 DISTRICT RANGER'S RESIDENCE

Clackamas Lake Ranger Station, Historic District
Government Camp, Oregon

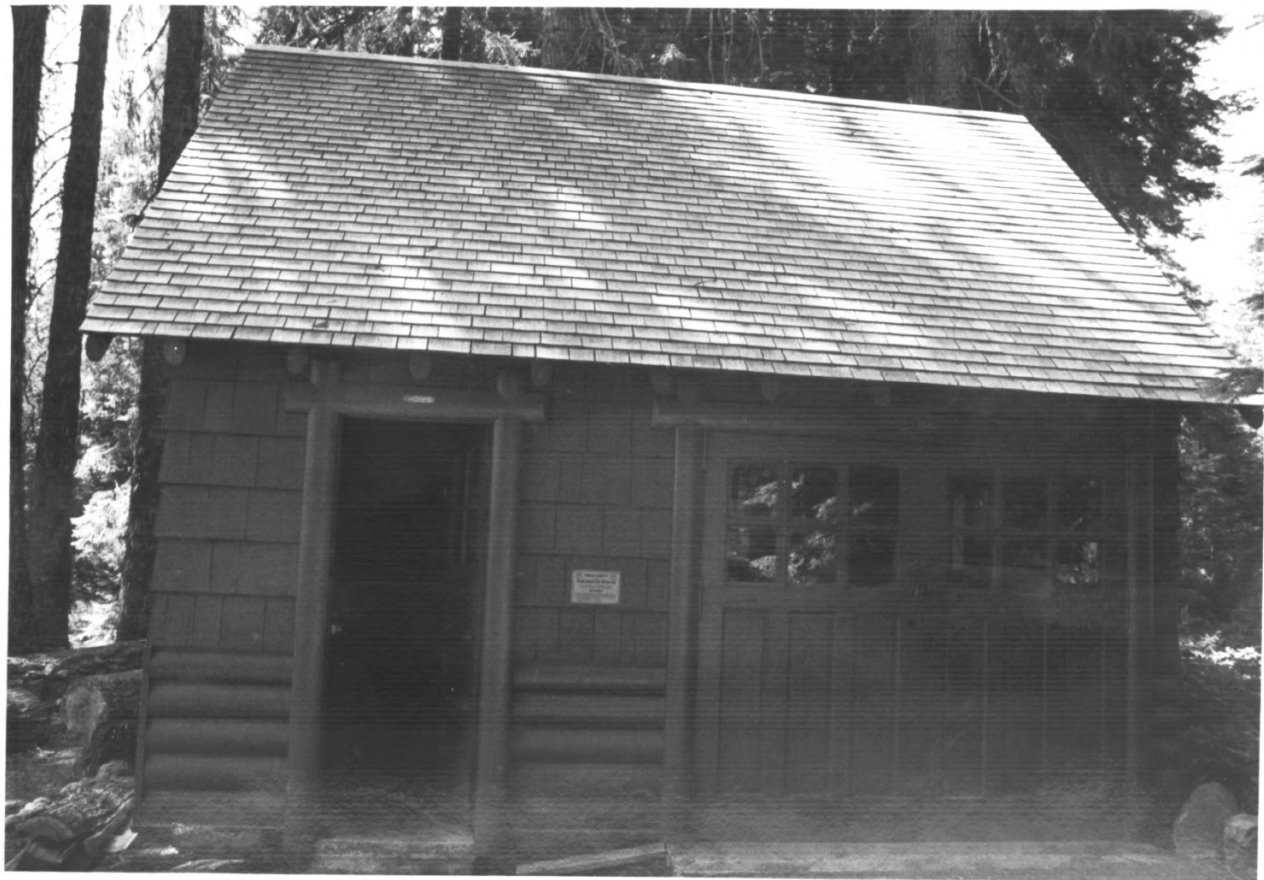
Photographer: S. Couche, August 1979,
U.S. Forest Service

Camera Direction: South toward front entry way.

Clackamas County

MAR 11 1981

MAR 22 1981



#F-1 DISTRICT RANGER'S RESIDENCE GARAGE

Clackamas Lake Ranger Station, Historic District
Government Camp, Oregon

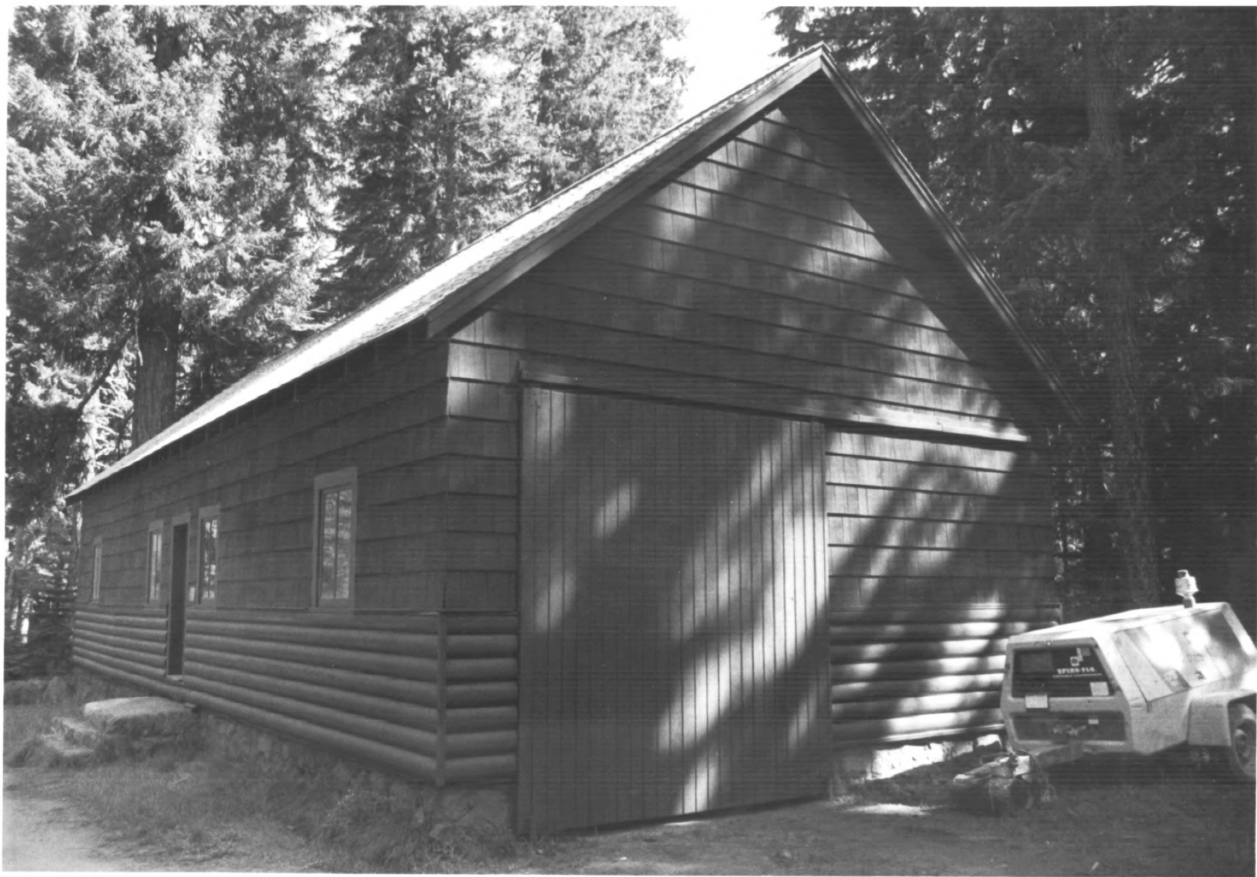
Photographer: S. Couche, August 1979,
U.S. Forest Service

Camera Direction: South toward north elevation.

Clackamas County

MAR 11 1981

MAR 22 1981



#G-1 FIRE WAREHOUSE

Clackamas Lake Ranger Station Historic District
Government Camp, Oregon

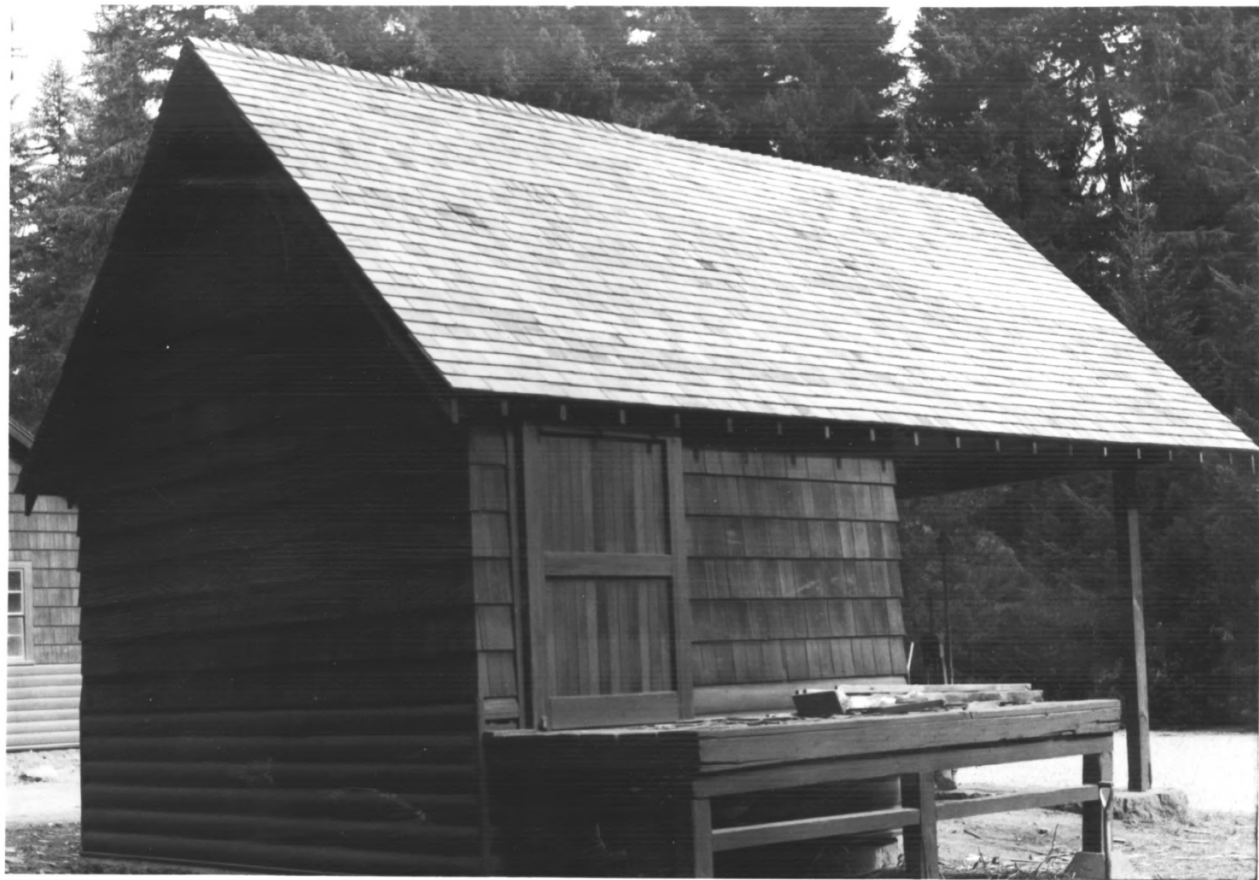
Photographer: S. Couche, August 1979,
U.S. Forest Service

Camera Direction: East toward north and
west elevations.

Clackamas County

MAR 11 1981

1981



#H-1 GAS AND OIL STORAGE

Clackamas Lake Ranger Station Historic District
Government Camp, Oregon

Photographer: S. Couche, August 1979,
U.S. Forest Service

Camera Direction: West toward south and east
elevations.

*Clackamas
County*

MAR 11 1981

APR 22 1981



#I-1 ROADS AND TRAILS WAREHOUSE

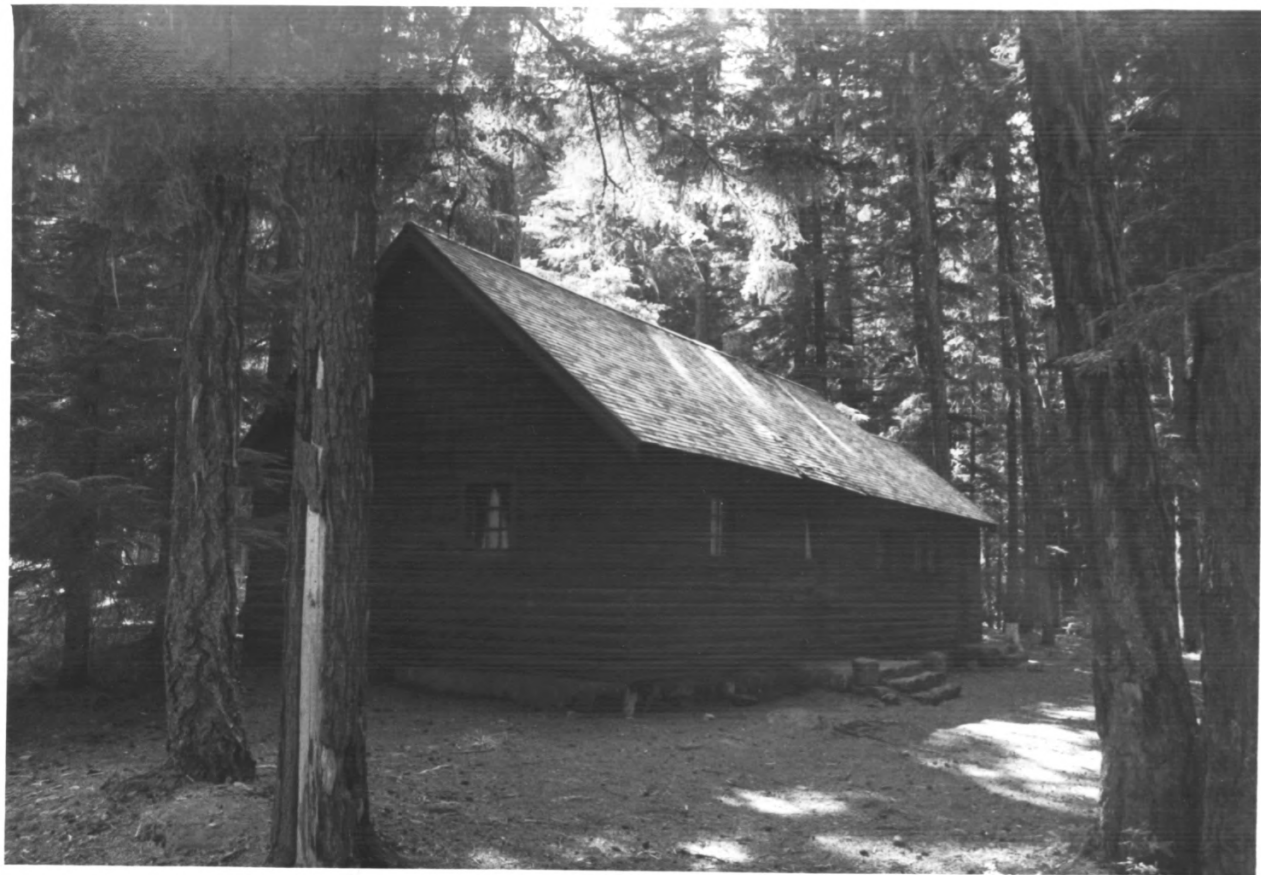
Clackamas Lake Ranger Station Historic District
Government Camp, Oregon

Photographer: S. Couche, August 1979,
U.S. Forest Service

Camera Direction: West toward east and
north elevations.

Clackamas County

MAY 11 1981
APR 22 1981



#K-1 MESS HALL

Clackamas Lake Ranger Station Historic District
Government Camp, Oregon

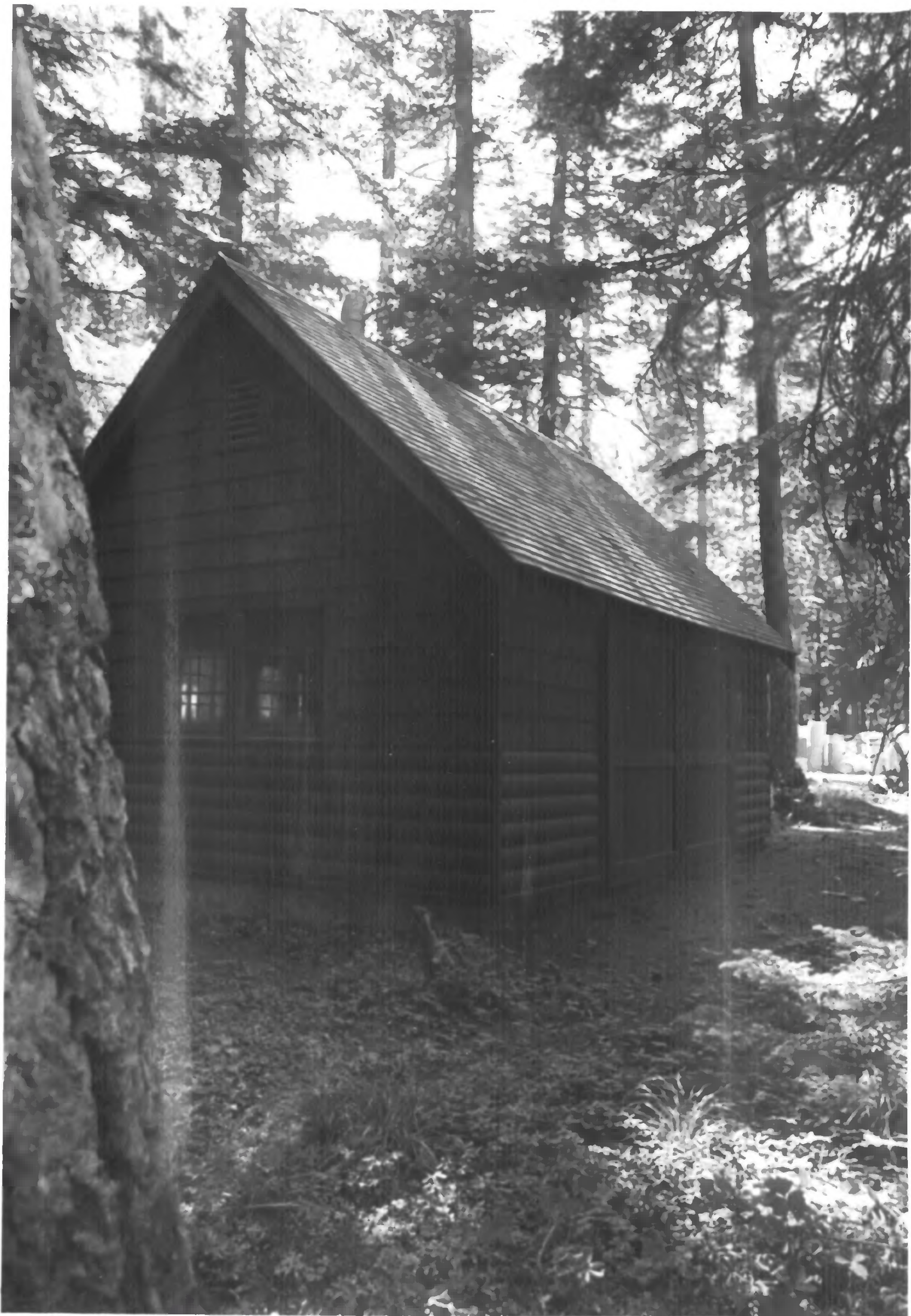
Photographer: S. Couche, August 1979,
U.S. Forest Service

Camera Direction: West toward east and
north elevations.

Clackamas County

MAR 11 1981

APR 22 1981



#M-1 BLACKSMITH SHOP

Clackamas Lake Ranger Station Historic District
Government Camp, Oregon

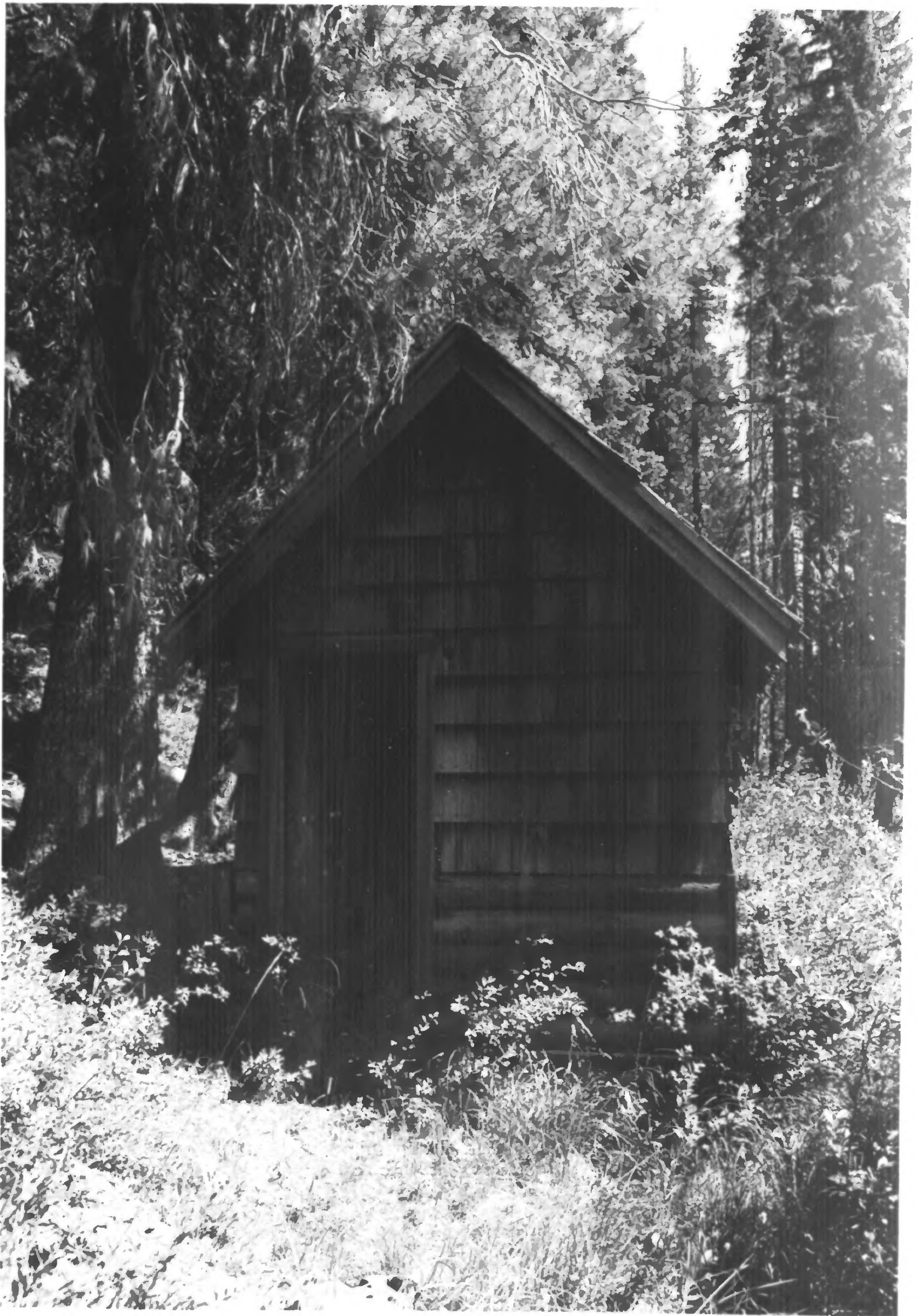
Photographer: S. Couche, August 1979,
U.S. Forest Service

Camera Direction: West toward east and north
elevation.

Clackamas County

APR 22 1981

APR 22 1981



#N-1 PUMPHOUSE

Clackamas Lake Ranger Station Historic District
Government Camp, Oregon

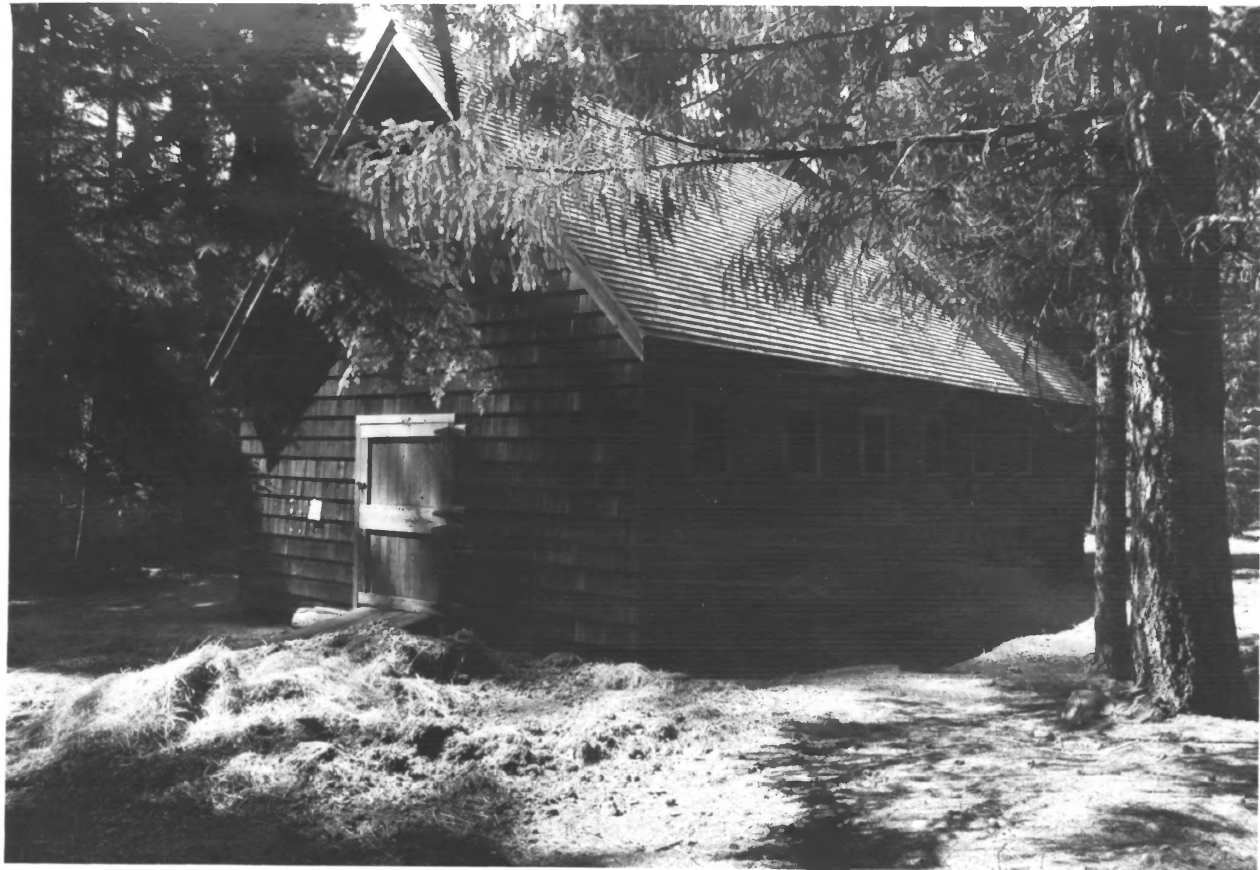
Photographer: S. Couche, August 1979,
U.S. Forest Service

Camera Direction: South toward north
elevation.

Clackamas
County

MAR 11 1981

APR 22 1981



#0-1 BARN

Clackamas Lake Ranger Station Historic District
Government Camp, Oregon

Photographer: S. Couche, August 1979,
U.S. Forest Service

Camera Direction: Northerly toward south
and east elevations.

*Clackamas
County*

MAR 11 1981
APR 22 1981



#P-1 WATER CISTERN

Clackamas Lake Ranger Station Historic District
Government Camp, Oregon

Photographer: S. Couche, August 1979,
U.S. Forest Service

Camera Direction: South

Clackamas County

MAR 11 1981

APR 22 1981



#X-1 VIEW OF SERVICE COURT

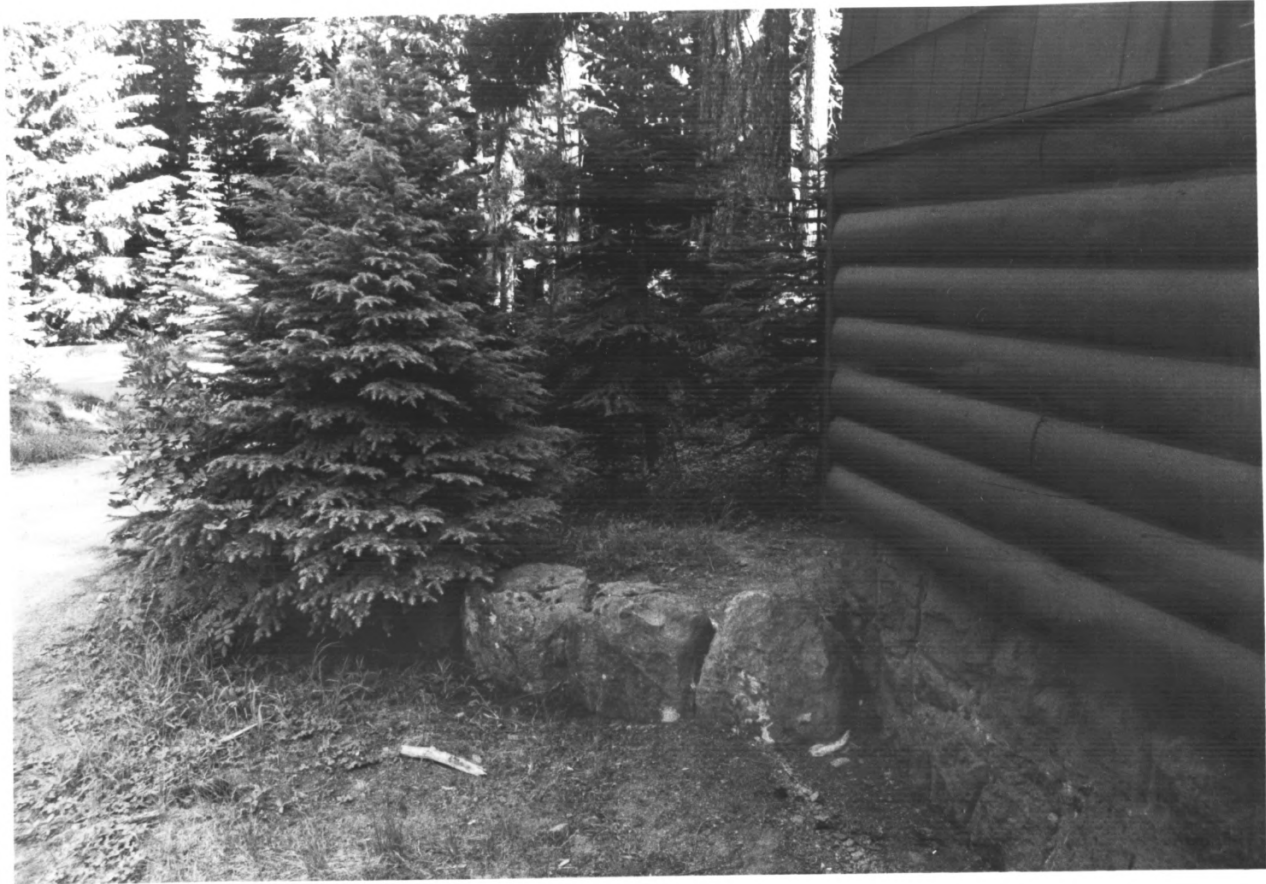
Clackamas Lake Ranger Station Historic District
Government Camp, Oregon

Photographer: S. Couche, August 1979,
U.S. Forest Service

Camera Direction: Easterly

Clackamas County MAR 11 1981

APR 22 1981



#X-2 EXAMPLE OF TYPICAL SQUARE RUBBLE ROCK BUILDING
FOUNDATION AND ROCK EDGING FOUND ALONG PATHS
AND DRIVEWAYS.

Clackamas Lake Ranger Station Historic District
Government Camp, Oregon

Photographer: S. Couche, August 1979,
U.S. Forest Service

Camera Direction: South near fire warehouse.

*Clackamas
County*

APR 22 1981

MAR 11 1981