



CHOICE LOCATION
Centrally located
M-3 ZONE
SUITABLE FOR STORES, OFFICES, MANUFACTURE
LIGHT MANUFACTURING
WILL DEVELOP ALL OR PART
BITAR BROS.
14 NE 137 AVE



Bay E. West Ankeny Car Barns
2706 NE Couch Street
Portland, Multnomah County, Oregon

South face, fronting East Burnside

1 of 8

Albert W. Solheim photo, 1978
117 SW Taylor
Portland, OR 97204

DOE
OCT 10 1978



Bay E, West Ankeny Car Barns
2706 NE Couch Street
Portland, Multnomah County, Oregon

Detail of south face rebuilt along original lines after street-widening in 1933.

2 of 8

AUG 20 1978

Albert W. Solheim photo, 1978
117 SW Taylor
Portland, OR 97204

DOE
OCT 10 1978



Bay E. West Ankeny Car Barns
2706 NE Couch Street
Portland, Multnomah Co., Oregon

AUG 28 1978

3 of 8

^{DOE}
OCT 10 1978

North face and west elevation,
showing central monitor.

Albert W. Solheim photo, 1978
117 SW Taylor
Portland, OR 97204

WAREHOUSE
NO. 3

COMPANY
VEHICLES
ONLY

THESE TWO
PARKING SPACES
FOR
COMPANY VEHICLES ONLY

PRIVATE
PARKING
MANAGER



Bay E, West Ankeny Car Barns
2706 NE Couch Street
Portland, Multnomah Co, Oregon

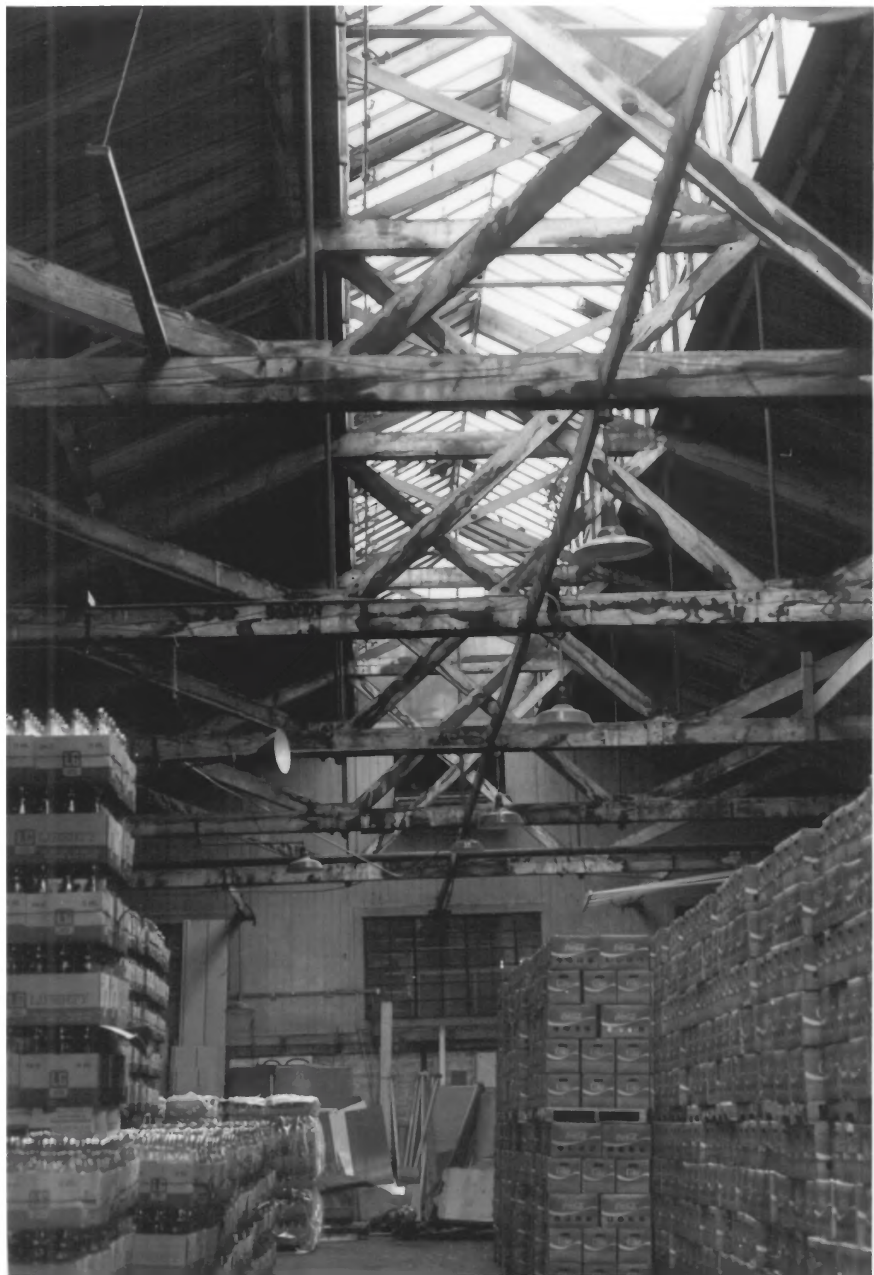
Detail of north face (originally
open to receive streetcars)
fronting NE Couch St. Temporary
wood wall is of comparatively
recent date.

AUG 28 1978

Albert W. Solheim photo, 1978
117 SW Taylor
Portland, OR 97204

4 of 8

DOE
OCT 10 1978



Bay E. West Ankeny Car Barn
2706 NE Couch Street
Portland, Multnomah Co, Oregon

5 of 8

Interior view showing roof
trusses and continuous monitor.
Looking toward south end.

Albert W. Solheim photo, 1978
117 SW Taylor
Portland, OR 97204

ACE
OCT 10 1978



Bay E. West Ankeny Car Barn
2706 NE Couch Street
Portland, Multnomah Co., Oregon

AUG 28 1978

6 of 8

Detail of east wall originally
shared by Bay D.

DOE
OCT 10 1978

Albert W. Solheim photo, 1978
117 SW Taylor
Portland, OR 97204



7 of 8

AUG 28 1978

West Ankeny Car Barns, Bays D
and E

Portland, Multnomah Co, Oregon

Portland Railway, Light and

Power Company photo, c. 1911

Oregon Historical Society

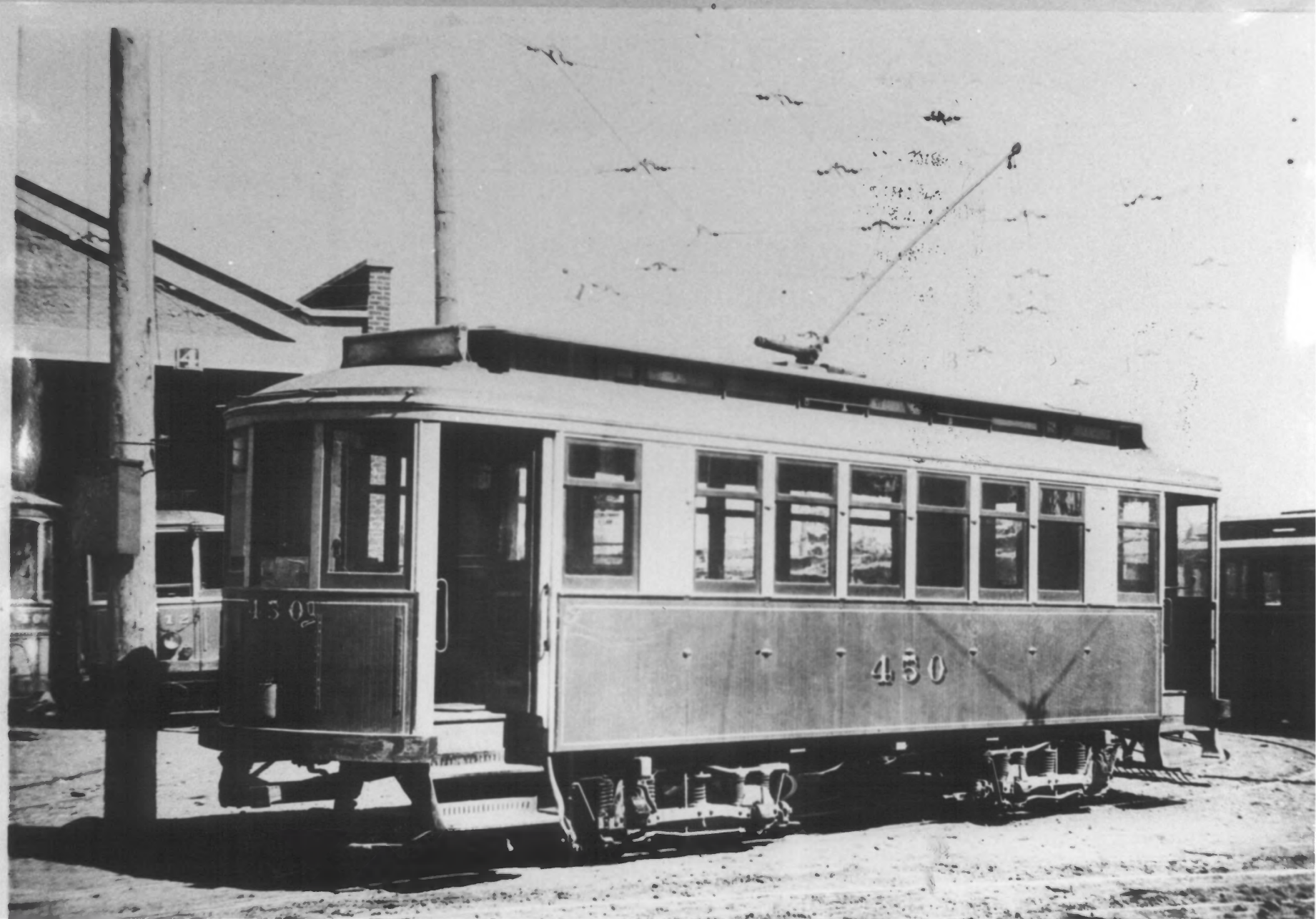
1230 SW Park Avenue

Portland, OR 97205

(neg. #128-12)

DOE
OCT 10 1978

Cars - #450.



West Ankeny Car Barns
Portland, Multnomah Co., Oregon
Portland Railway, Light and
Power Company photo, c. 1912

8 of 8

~~AUG 28 1978~~

Car No. 450 and the north (en-
trance-exit) end, Bay E

Oregon Historical Society
1230 SW Park Ave. (Neg. #129-54)
Portland. OR 97205