



NATIONAL REGISTER OF HISTORIC PLACES REGISTRATION FORM

This form is for use in nominating or requesting determinations of eligibility for individual properties or districts. See instructions in "Guidelines for Completing National Register Forms" (National Register Bulletin 16). Complete each item by marking "x" in the appropriate box or by entering the requested information. If an item does not apply to the property being documented, enter "N/A" for "not applicable." For functions, styles, materials, and areas of significance, enter only the categories and subcategories listed in the instructions. For additional space use continuation sheets NPS Form 10-900a. Type all entries.

1. Name of Property

304

historic name Hoschton Depot

other names/site number N/A

2. Location

street & number 4276 State Route 53
city, town Hoschton
county Jackson code 157
state Georgia code GA zip code 30548
() not for publication

() vicinity of

3. Classification

Ownership of Property:

- () private
- (x) public-local
- () public-state
- () public-federal

Category of Property:

- (x) building(s)
- () district
- () site
- () structure
- () object

Number of Resources within Property:

Contributing

Noncontributing

buildings	1	0
sites	0	0
structures	0	0
objects	0	0
total	1	0

Contributing resources previously listed in the National Register: N/A

Name of previous listing: N/A

Name of related multiple property listing: N/A

4. State/Federal Agency Certification

As the designated authority under the National Historic Preservation Act of 1966, as amended, I hereby certify that this nomination meets the documentation standards for registering properties in the National Register of Historic Places and meets the procedural and professional requirements set forth in 36 CFR Part 60. In my opinion, the property meets the National Register criteria. () See continuation sheet.

Rickard Claves
Signature of certifying official

2.21.00
Date

W. Ray Luce
Director, Historic Preservation Division,
Georgia Department of Natural Resources

In my opinion, the property () meets () does not meet the National Register criteria. () See continuation sheet.

Signature of commenting or other official

Date

State or Federal agency or bureau

5. National Park Service Certification

I, hereby, certify that this property is:

entered in the National Register

Elson A. Beall 3/31/00

determined eligible for the National Register _____

determined not eligible for the National Register _____

removed from the National Register _____

other, explain: _____

see continuation sheet

far

Keeper of the National Register

Date

6. Function or Use

Historic Functions:

Transportation: rail-related

Current Functions:

Vacant: not in use

7. Description

Architectural Classification:

Other: depot

Materials:

foundation	Brick
walls	Wood: weatherboard
roof	Metal
other	N/A

Description of present and historic physical appearance:

The Hoschton Depot is a small, frame, rectangular-shaped railroad depot, which is located alongside State Route 53 in the center of the small town of Hoschton, Jackson County, Georgia. Built in 1883, the depot is set on brick piers and clad in weatherboard. The hip roof features broad overhanging eaves and is covered with V-crimp sheet metal. The main (SR 53) facade features single and paired 6-over-6-light sashes with molded caps. The freight entrance facing SR 53, which was filled in 1968 with two windows and a single door, is easily identified by its intact surround and poured-concrete ramp. The rear (track side) includes two windows, a pedestrian entrance, and an intact sliding freight door.

The interior is divided into three principal spaces: the freight room, passenger waiting room, and ticket office. The large, open freight room occupies the entire south half of the building. Most of the interior wall surfaces and some of the flooring have been removed as a result of previous rehabilitations and deterioration over time. The passenger waiting room is an L-shaped space that includes the mid-section of the building and the northwest corner. The wood floors have been replaced but the beaded, tongue-in-groove paneling in the waiting room survives intact. A stove to heat the waiting room and ticket office has been removed but the flue pipe remains. A ticket window with a metal grille communicates between the waiting room and the ticket office, which is located in the northeast corner of the building. The walls of the ticket office, like the waiting room, are covered with beaded, tongue-in-groove paneling.

8. Statement of Significance

Certifying official has considered the significance of this property in relation to other properties:

nationally statewide locally

Applicable National Register Criteria:

A B C D

Criteria Considerations (Exceptions): N/A

A B C D E F G

Areas of Significance (enter categories from instructions):

Architecture
Transportation

Period of Significance:

1883 - 1948

Significant Dates:

1883 - Gainesville, Jefferson and Southern Railroad built depot in Hoschton.

1948 - Passenger rail service through Hoschton ceased.

Significant Person(s):

N/A

Cultural Affiliation:

N/A

Architect(s)/Builder(s):

Hosch, J. R. (builder, contractor)
Hosch, R. A. (builder, contractor)
Hosch, William (builder, contractor)
Sage, John (civil engineer)

United States Department of the Interior
National Park Service

National Register of Historic Places Continuation Sheet

Section 8--Statement of Significance

Narrative statement of significance (areas of significance)

The Hoschton Depot is significant in the area of architecture because its design is representative of depots constructed along the Gainesville Midland Railroad line and throughout Georgia during the 19th century. The design of the depot is typical for depots built in small towns in Georgia and it is very similar to other depots on the Gainesville, Jefferson and Southern Railroad line, including those in Talmo and Jefferson. The Talmo Depot is roughly the same size as the Hoschton Depot and includes the broad, hip roof, freight entrances, and a three-part division of interior space: freight room, passenger waiting rooms, ticket office. The only difference is a small bay window that projects on the track side of the Talmo Depot. The Jefferson Depot maintains the same basic form, materials, and plan as the depot in Hoschton except that it is larger. It includes two freight doors along both street and track side facades and the overhanging hip roof is supported by brackets. The rectangular-shape, hip-roof, and basic three-room plan are common throughout Georgia and can be found in depots as distant as Folkson in the southeast corner of the state.

The depot is significant under the theme of transportation because railroads were instrumental in the development of Georgia and because they brought the rise of small towns, such as Hoschton, from the middle of the 19th century to World War II. Although Hoschton had been founded before the arrival of the railroad, it experienced significant growth only after the rail line was established through town. Like towns throughout Georgia in the late 19th and early 20th centuries, the railroad in Hoschton led to a small boom economy in which the town's population quickly swelled to 250 residents. Hoschton remained an agricultural-based community but the railroad offered a means to transport agricultural products, principally cotton and lumber, to distant mills and manufacturing plants. The Hoschton Depot is the only surviving rail-related resource in Hoschton and represents the phenomenal growth brought by the railroads in Hoschton and throughout Georgia.

National Register Criteria

The Hoschton Depot is eligible for listing in the National Register under Criterion A because of its significance in the area of transportation. The depot is also significant under Criterion C because in the area of architecture because its design is representative of depots built along the Gainesville, Jefferson and Southern Railroad line.

Criteria Considerations (if applicable)

N/A

United States Department of the Interior
National Park Service

National Register of Historic Places Continuation Sheet

Section 8--Statement of Significance

Period of significance (justification)

The period of significance begins in 1883 with the construction of the depot and ends in 1948, when the depot last served as a railroad depot.

Contributing/Noncontributing Resources (explanation, if necessary)

The Hoschton Depot, the only resource associated with this nomination, is a contributing building.

Developmental history/historic context (if appropriate)

The Gainesville, Jefferson and Southern Railroad was chartered August 23, 1872 with the goal of creating a 44-mile line from Gainesville in Hall County south to Monroe in Walton County. A 13-mile branch was planned from Florence to Jefferson. By June 1, 1883, the line completed 18 miles from Gainesville south to Hoschton. On August 1, 1904, the Gainesville-Midland Railway acquired the Gainesville, Jefferson and Southern Railroad, which comprised 22 miles of line from Gainesville to Jefferson and a 32 mile-branch line from Belmont to Monroe. By the end of the 19th century, the line extended as far south as Social Circle (on the Georgia Railroad) and, in 1906, a line was extended to Fowler Junction, near Athens. Eventually, the Gainesville to Athens line became the most profitable. In 1948, the entire line from Belmont to Monroe, including Hoschton, was abandoned.

Hoschton was first known as Hoschton's Store because the Hosch brothers, R. A. and J. R. Hosch, built a store in the area in 1865. The town was founded in 1881 by the Hosch brothers and platted in 1881. The Hosches set aside lots for a community church, school, Masonic lodge, cemetery, and public square. On December 21, 1881, the brothers sold lots at public auction. The plat features a grid-iron plan of streets and blocks organized around the railroad, which had not yet been established in Hoschton.

Recognizing the potential boost a rail line would bring their town, the residents of Hoschton employed former governor A. D. Candler to lobby for the line and citizens solicited subscriptions and sold stock for the Belmont to Monroe extension. The line was opened through Hoschton in 1883 and the depot was built that same year. The town experienced significant growth after the Gainesville, Jefferson and Southern Railroad established a line through town. By 1887, Hoschton, had 250 residents. The town was incorporated in 1891. A school was built in 1894 and then a larger, more modern school was built in 1918. Hoschton had Methodist, Presbyterian, and Baptist churches, a variety of commercial and industrial enterprises, and a weekly newspaper.

The depot served as a railroad depot until 1948, when passenger service was suspended. After 1948, the depot served as a corn mill, storage building, fire station, city hall, civic club meeting hall, barbershop, athletic gymnasium, pottery shop, and animal hospital. Between 1948 and 1950, the

United States Department of the Interior
National Park Service

**National Register of Historic Places
Continuation Sheet**

Section 8--Statement of Significance

rails were removed and a recreation park was established adjacent to the depot. Currently, the city of Hoschton is rehabilitating the depot to serve as a community center and museum.

9. Major Bibliographic References

Edge, Cindy R. Historic Property Information Form. Hoschton Depot. June 1996. On file at the Georgia Department of Natural Resources, Historic Preservation Division, Atlanta, Georgia.

Roth, Darlene R. "Georgia Community Development and Morphology of Community Types." D. Roth and Associates, Inc., Decatur, Georgia, 1989. On file at the Historic Preservation Division, Georgia Department of Natural Resources, Atlanta, Georgia.

Previous documentation on file (NPS): () N/A

- () preliminary determination of individual listing (36 CFR 67) has been requested
- (x) preliminary determination of individual listing (36 CFR 67) has been issued
date issued: June 27, 1995
- () previously listed in the National Register
- () previously determined eligible by the National Register
- () designated a National Historic Landmark
- () recorded by Historic American Buildings Survey #
- () recorded by Historic American Engineering Record #

Primary location of additional data:

- (x) State historic preservation office
- () Other State Agency
- () Federal agency
- () Local government
- () University
- () Other, Specify Repository:

Georgia Historic Resources Survey Number (if assigned): N/A

10. Geographical Data

Acreeage of Property 0.15 acres

UTM References

A) Zone 17 Easting 245240 Northing 3776150

Verbal Boundary Description

The property boundary is indicated by a heavy black line on the attached map, drawn to scale.

Boundary Justification

The National Register Boundary follows the current legal boundary of the property and includes the Hoschton Depot, the only resource associated with this nomination.

11. Form Prepared By

State Historic Preservation Office

name/title Steven H. Moffson, Architectural Historian
organization Historic Preservation Division, Georgia Department of Natural Resources
street & number 500 The Healey Building, 57 Forsyth Street
city or town Atlanta **state** Georgia **zip code** 30303
telephone (404) 656-2840 **date** January 15, 2000

Consulting Services/Technical Assistance (if applicable) (x) not applicable

(HPD form version 02-24-97)

United States Department of the Interior
National Park Service

**National Register of Historic Places
Continuation Sheet**

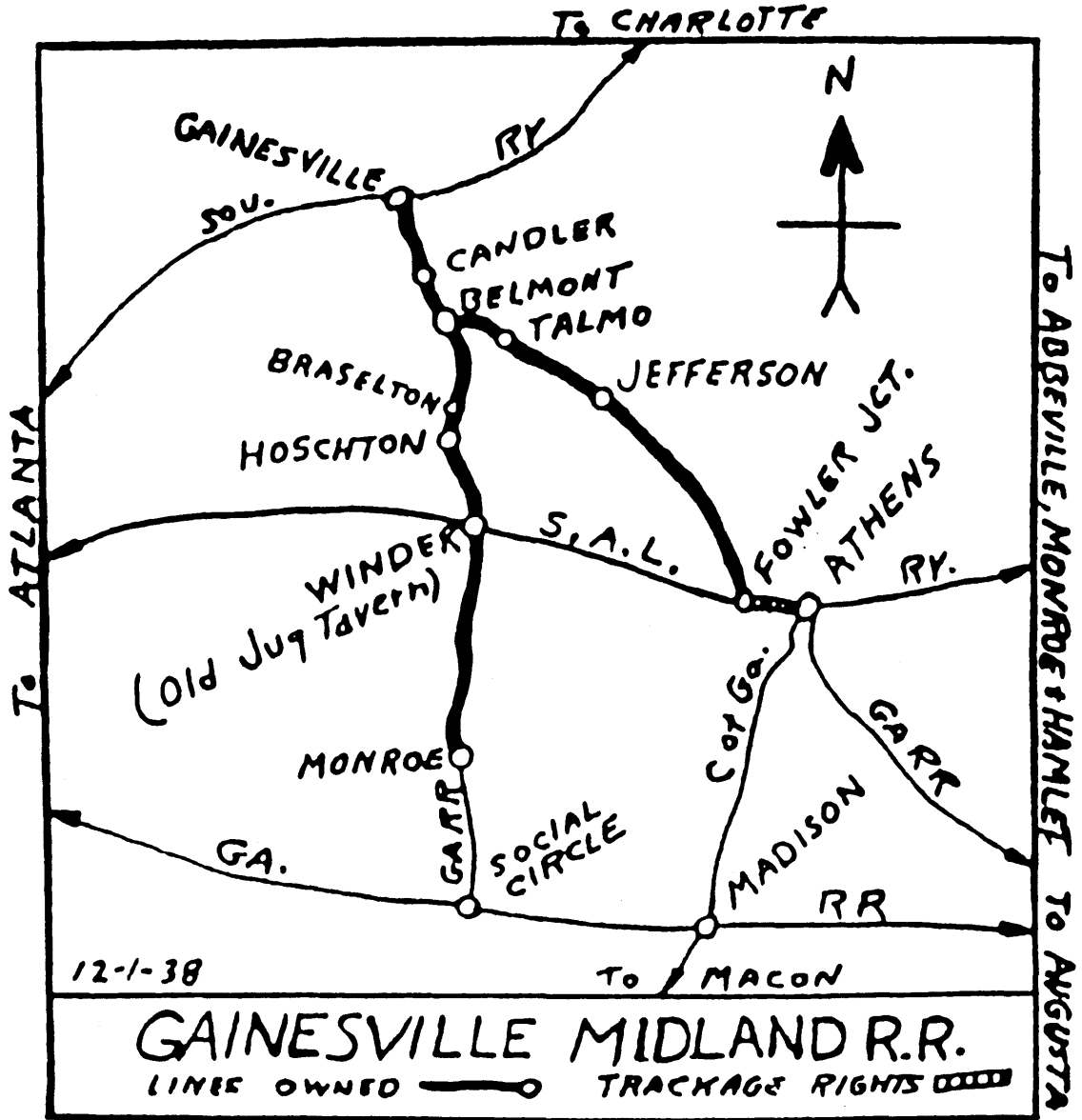
Photographs

Name of Property: Hoschton Depot
City or Vicinity: Hoschton
County: Jackson
State: Georgia
Photographer: James R. Lockhart
Negative Filed: Georgia Department of Natural Resources
Date Photographed: January 1999

Description of Photograph(s):

1. Photographer facing southeast.
2. Photographer facing northeast.
3. Photographer facing southwest.
4. Photographer facing northwest.
5. Interior, freight room, photographer facing north.
6. Interior, freight room doors, photographer facing east.
7. Interior, freight room, photographer facing southwest.
8. Interior, passenger waiting room, photographer facing east.
9. Interior, passenger waiting room, photographer facing west.
10. Interior, ticket office, photographer facing west.

Hoshton Depot
Hoshton, Jackson County, Georgia
Attachment A



Attachment A

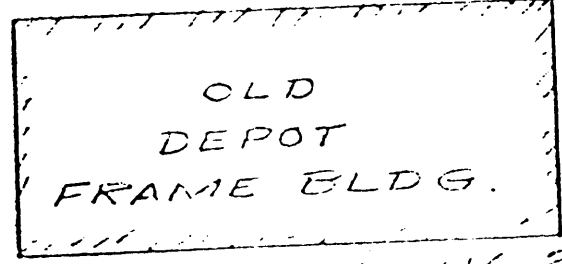
Hoschton Depot
Hoschton, Jackson County, Georgia
Sketch Map
National Register Boundary
Scale: 1"=20'
North: ↖

CENTER OF OLD GAINESVILLE MIDLAND
RAILROAD BED

S 18-41E 116.7

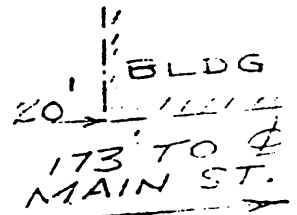
N 72-53E

S 173-42W 53.85



N 19-30W 116.2

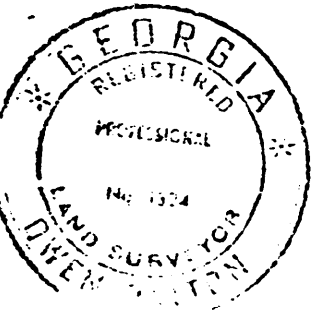
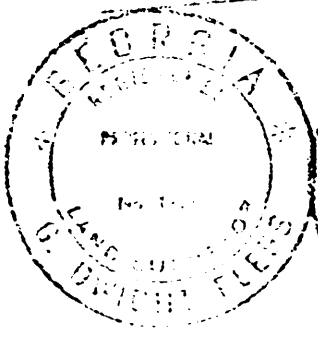
H.P. DELEPIERRE



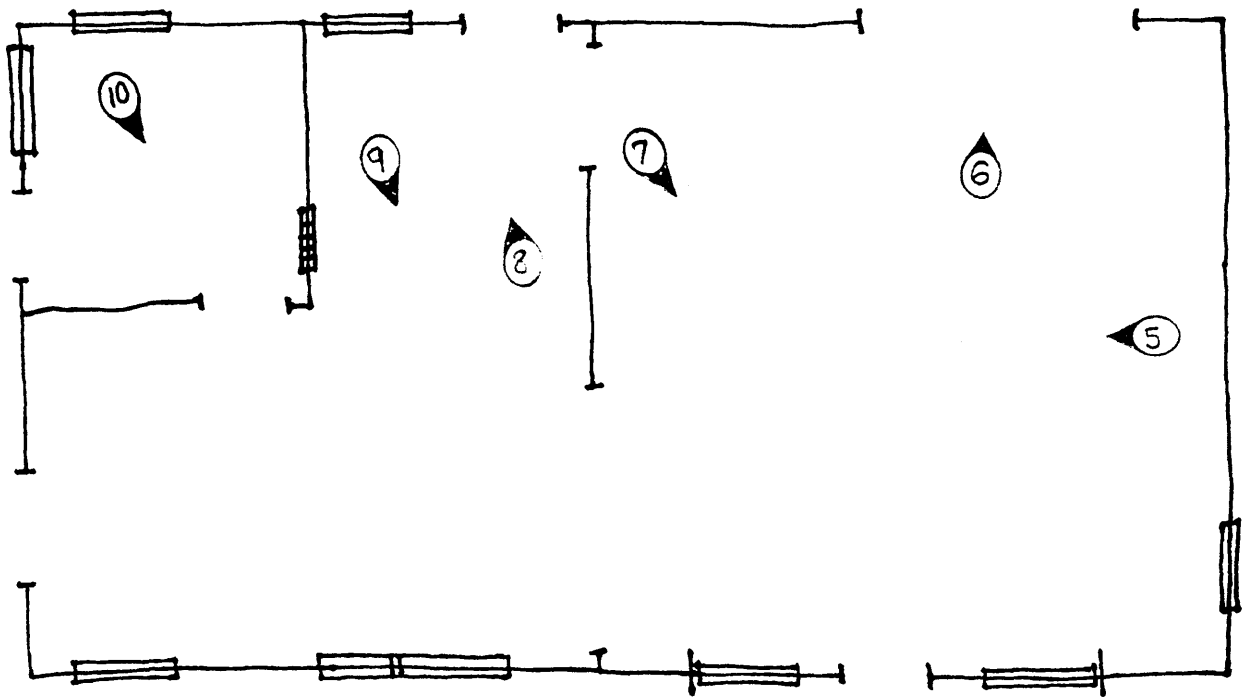
JACKSON EHDOS.

25'

HWY. GA. 53 ASPHALT



PROPERTY OF
CITY OF HOSCHTON
LOCATED IN HOSCHTON, G.M. 1407
JACKSON COUNTY, GA.
SCALE 1"=20' NOV. 10, 1964.



Hoschton Depot
Hoschton, Jackson County, Georgia
Floor Plan
No Scale
North: ↖