

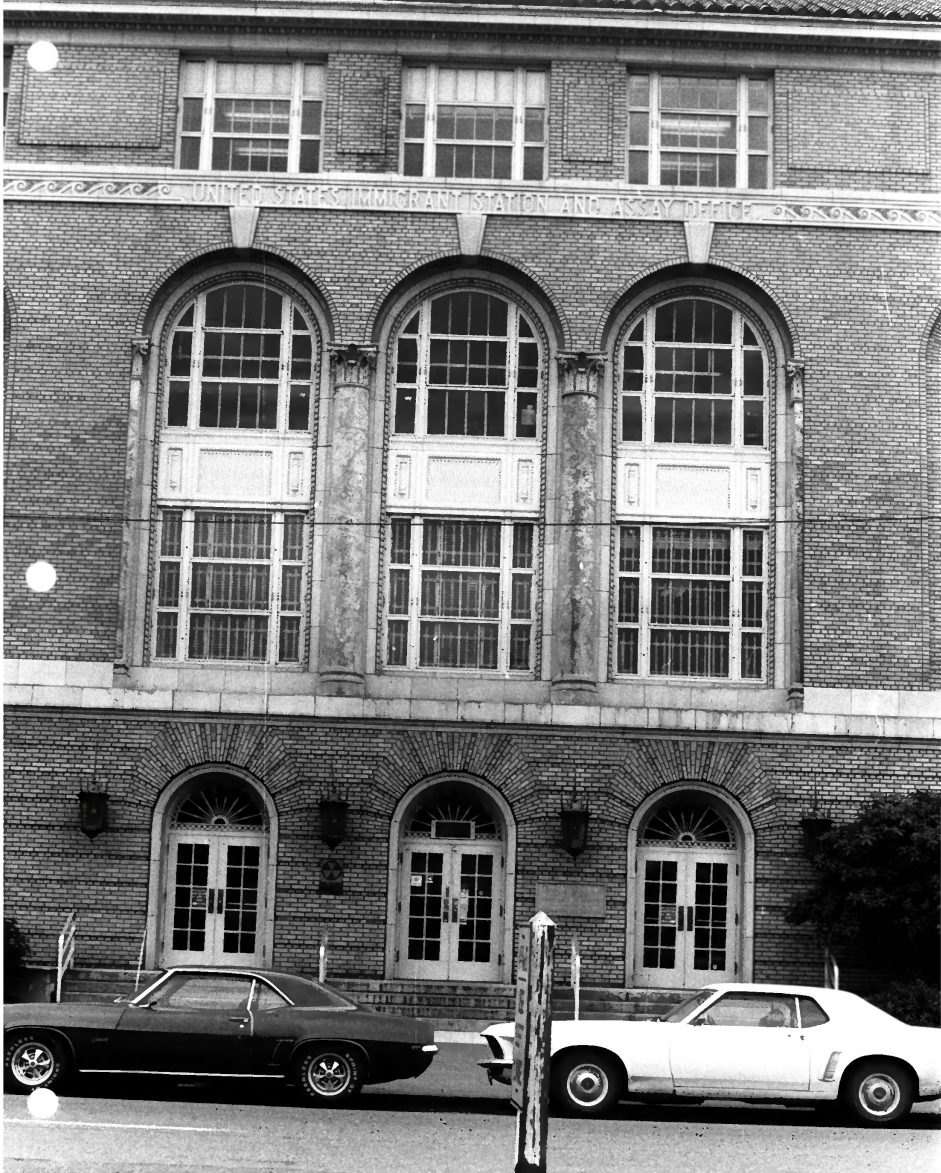


U.S. Immigrant Station and Assay Office  
Seattle, Washington  
Northeast Elevation

*King County*

*with 10/9*

Stephen A. Mathison  
The Conservation Company  
1 of 5



UNITED STATES IMMIGRANT STATION AND ASSAY OFFICE

U.S. Immigrant Station and Assay Office  
Seattle, Washington  
N.E. Elevation - Entrance

*King Co.*

DEC 12 1978

JAN 25 1979

Stephen A. Mathison  
The Conservation Company  
2 of 5

STATES IMMIGRANT STATION AND ASSAY



U.S. Immigrant Station and Assay Office  
Seattle, Washington  
N.E. Elevation - Column & Window Detail

DEC 12 1978

JAN 25 1979

Stephen A. Mathison  
The Conservation Company

3 of 5



U.S. Immigrant Station and Assay Office  
Seattle, Washington  
Entrance Detail

*King County*  
DEC 12 1978

JAN 25 1979

Stephen A. Mathison  
The Conservation Company

4 of 5





U.S. Immigrant Station and Assay Office  
Seattle, Washington

View facing East

JAN 25 1979

Northwest & Southwest Elevations

*King Co.*

Stephen A. Mathison

The Conservation Company

DEC 12 1978