

United States Department of the Interior
National Park Service

National Register of Historic Places
Registration Form



This form is for use in nominating or requesting determinations for individual properties and districts. See instructions in *How to Complete the National Register of Historic Places Registration Form* (National Register Bulletin 16A). Complete each item by marking "x" in the appropriate box or by entering the information requested. If any item does not apply to the property being documented, enter "N/A" for "not applicable". For functions, architectural classification, materials, and areas of significance, enter only categories and subcategories from the instructions. Place additional entries and narrative items on continuation sheets (NPS Form 10-900a). Use a typewriter, word processor, or computer to complete all items.

1. Name of Property

Historic name North Eleventh Street Historic District

Other names/site number _____

2. Location

Street & number North 11th St. bounded by Garfield St. on the North & Lincoln St. on the South

Not for publication ☐

City or town Beatrice

Vicinity ☐

State Nebraska Code NE County Gage Code 067 Zip code 68310

3. State/Federal Agency Certification

As the designated authority under the National Historic Preservation Act of 1986, as amended, I hereby certify that this ☒ nomination ☐ request for determination of eligibility meets the documentation standards for registering properties in the National Register of Historic Places and meets the procedural and professional requirements set forth in 36 CFR Part 60. In my opinion, the property ☒ meets ☐ does not meet the National Register Criteria. I recommend that this property be considered significant ☐ nationally ☐ statewide ☒ locally. (See continuation sheet for additional comments.)

Michael J. Smith
Signature of certifying official

Jan. 20, 2010
Date

Director, Nebraska State Historical Society

State or Federal agency and bureau

In my opinion, the property ☐ meets ☐ does not meet the National Register criteria. (See continuation sheet for additional comments.)

Signature of certifying official/Title

Date

State or Federal agency and bureau

4. National Park Service Certification

I, hereby, certify that this property is:

☒ entered in the National Register.

☐ see continuation sheet.

☐ determined eligible for the National Register.

☐ see continuation sheet.

☐ determined not eligible for the National Register.

☐ removed from the National Register.

☐ other, (explain): _____

Edson H. Beall
Signature of Keeper

3-10-10
Date of Action

North Eleventh Street Historic District

Name of Property

Gage County, Nebraska

County and State

5. Classification**Ownership of Property**

(Check as many boxes as apply)

☒ Private
☐ Public-local
☐ Public-state
☐ Public-federal

Category of Property

(Check only one box)

☐ Building(s)
☒ District
☐ Site
☐ Structure
☐ Object

Number of Resources within Property

(Do not include previously listed resources in the count.)

Contributing	Noncontributing	
30	6	Buildings
		Sites
		Structures
		Objects
30	6	Total

Name of related multiple property listing

(Enter "N/A" if property is not part of a multiple property listing.)

Number of contributing resources previously listed in the National Register**6. Function or Use****Historic Functions**

(Enter categories from instructions.)

DOMESTIC / single dwelling

Current Functions

(Enter categories from instructions.)

DOMESTIC / single dwelling

7. Description**Architectural Classification**

(Enter categories from instructions.)

Late 19th and Early 20th Century RevivalsLate 19th and 20th Century American Movements**Materials**

(Enter categories from instructions.)

Foundation Brick, stone, concrete

Walls Brick, stone, stucco, wood clapboard, vinyl, steel

Roof asphalt shingles

Other

Narrative Description

(Describe the historic and current condition of the property on one or more continuation sheets.)

United States Department of the Interior
National Park Service

National Register of Historic Places
Continuation Sheet

North Eleventh Street Historic District

Name of Property

Gage County, Nebraska

County and State

Section 7 Page 1

PHYSICAL DESCRIPTION

The community of Beatrice is located in southeastern Nebraska at the center of Gage County. The city is located at the intersection of Nebraska State Highway 4 / U.S. Highway 77 (Sixth Street) and U.S. Highway 136 (Court Street). Two rivers run through town. The Big Blue River runs from the northwest to the southeast and Indian Creek flows from the north-northeast to south-southwest.¹

The North Eleventh Street Historic District is located approximately three-quarters of a mile northeast of the business district of Beatrice, Nebraska. It stretches four blocks along North Eleventh Street from Lincoln Street on the south to Garfield on the north.² North Eleventh Street is eighty foot wide. Concrete sidewalks parallel the concrete street on both sides. Trees line both sides of the street.

The residential nature of the district remains intact. Unlike other potential historic districts in Beatrice, the North Eleventh Street Historic District has not been commercially developed. Despite the differences in footprint, scale, architectural style and age, the residential nature of the buildings in the North Eleventh Street Historic District has remained consistent. The Historic District contains thirty contributing and six non-contributing buildings. Overall this district maintains a high level of integrity.

Homes in the North Eleventh Street Historic District are a cohesive collection of a late nineteenth century and early twentieth century residential structures. Most homes in the Historic District are one-and-a-half to two-stories in height with construction dates spanning from 1885 to 1955. The majority of the buildings were built after 1900. Those styles range from late nineteenth to early to mid twentieth century revivals and American movements. A few individual properties reflect an eclectic blend of more than one style.

Structures within this district are classified by this document as either contributing or non-contributing. The integrity of each property was judged systematically. Properties that lacked any significant alterations were counted as contributing. The **J. Henderson House at 803 North Eleventh Street** is an example of a contributing building that has not been significantly altered. Properties that had one significant alteration which did not obscure character-defining features were counted as contributing. Such alterations could be an appropriate addition or porch enclosure. The contributing house at **823 North Eleventh Street** would be an example of this type of consideration. However, properties that had two or more significant alterations were counted as non-contributing such as the house at **821 North Eleventh Street**.

CONTRIBUTING PROPERTIES

The following is a description of the various architectural styles represented in the North Eleventh Street Historic District. Properties contributing to the historic character and significance of the Historic District are described as they

¹ Indian Creek crosses North 6th Street north of Dorsey Street and feeds into the Big Blue River north of the bridge at Court Street.

² It is bounded on the north by Garfield Street, on the east by the alley between North 7th and North 8th Street, on the south by Washington Street and on the west by the alley between North 6th Street and North 7th Street.

United States Department of the Interior
National Park Service

National Register of Historic Places
Continuation Sheet

North Eleventh Street Historic District

Name of Property

Gage County, Nebraska

County and State

Section 7 Page 2

relate to each various style. The building number mentioned in parenthesis after each building description correlates to a map of the North Eleventh Street Historic District in Section 10, Page 6.

QUEEN ANNE

The Queen Anne was the dominant style of domestic buildings during the last two decades of the 19th century and was popularized by widely published English architect Richard Norman Shaw. The style was used in many Nebraska homes, although the ornamentation was often blended with other stylized architectural elements. Easily identifiable features of this architectural style include asymmetrical floor plans and façades, steeply pitched roofs of varying heights, decorated front-facing gables and multi-textured wall surfaces.

There are two examples of Queen Anne style homes in the district. The first is at **623 North Eleventh Street** (Building Number 4). Constructed in 1909 this is a two-story, front-facing gable building. There is a single-story bay window on the north façade. The gable is decorated with fish-scale shingles and a small circular window. Dentils line the eaves of the gables. Centered on the second floor is a pair of double hung wood windows. Square wood columns support a full-width, hipped roof porch.

The other Queen Anne styled building in the North Eleventh Street Historic district is the High Style, two-and-half-story **J. Henderson House at 803 North Eleventh Street** (Building Number 8). The 1890 structure exhibits a hipped asphalt roof with lower cross gables and a fish-scale-shingle tower at the corner of the front façade. A partial width, asymmetrical porch extends along both sides. Each of the front facing gables is ornamented with a circular window and the eaves exhibit pairs of decorative brackets. Windows are typically double-hung one-over-one units.

COLONIAL REVIVAL

A reaction against Victorian Era architectural styles such as Queen Anne, the Colonial Revival style gained popularity in the 1890s and was utilized throughout the first half of the twentieth century. The style reflected a desire to evoke America's own past and is characterized by simple, classical details.

The house at **613 North Eleventh Street** (Building Number 2) was constructed in 1890. This two-story, wood clapboard house features two-story corner pilasters at each building face and an elaborate Colonial Revival wrap-around porch. Classical porch columns and cornice line dentils support the minimally sloped porch roof. A Greek pediment and paired columns at the porch align with the front door. A combination of window types have been used on the structure, including one-over-one double hung windows, a large fixed window and a decorative diamond shaped window on the north façade.

CRAFTSMAN

At the turn of the century and late into the 1920s, the Craftsman style was prevalent throughout the Midwest and Great Plains states. The style favors simpler design, natural materials and fine craftsmanship. Low-pitched roofs, unenclosed projecting eave overhangs, exposed roof-rafters, roof beams and decorative braces characterize the style. Porches feature large porch columns; some are built of masonry and others are square wood posts, many with or without battered sides.

United States Department of the Interior
National Park Service

National Register of Historic Places
Continuation Sheet

North Eleventh Street Historic District

Name of Property

Gage County, Nebraska

County and State

Section 7 Page 3

Because many of the buildings in the North Eleventh Street District were constructed during the period the Craftsman style was most popular, there are thirteen Craftsman styled homes in the Historic District. These home range in size and level of detailing.

The two-story, wood clapboard house at **601 North Eleventh Street** (Building Number 1) was built around 1910. The open eaves of the cross-hipped asphalt roof are decorated with exposed rafter tails. Full-height, double-hung, one-over-one wood windows are framed with wood trim. The front-facing porch gable is decorated with false beams and exposed rafter tails in the eaves. Masonry piers are used as porch posts.

Built in 1915, the one-and-a-half story house at **602 North Eleventh Street** (Building Number 36) was constructed with a side-gabled asphalt roof, decorative triangular-knee braces at the eaves and exposed rafter tails. The eaves of the front-gabled dormer, which feature three windows, are decorated with the same braces and exposed rafter tails. Double-hung, one-over-one wood windows are typically grouped in threes. The full-width porch is supported by a grouping of three square posts, setting on low brick piers at either end.

The building at **610 North Eleventh Street** (Building Number 35) is a one-and-a-half story home with a hipped asphalt roof and wood clapboards. The building was constructed in 1904. Hipped-roof, gable dormers are on the north, west and south facades. A group of three, one-over-one windows sit in each of these dormers. The eaves are decorated with exposed rafter tails. Square porch posts support the full-width porch.

Constructed in 1928, the home at **616 North Eleventh Street** (Building Number 33) is a single-story structure with a front-gabled asphalt roof. Decorative triangular-knee braces are at the eaves of the roof. A partial width porch is covered with a front-facing gable roof, which also has decorative triangular-knee braces. Wood porch columns with battered sides, support the roof. The porch columns are set on piers with a stucco finish.

The home at **702 North Eleventh Street** (Building Number 31) was built in 1910. This three-and-a-half story building has two front-facing gables. The prominent gable is above a two-story bay. The eaves are decorated with exposed rafter tails. The porch wraps around the west and south sides of the home. The south façade features a small, front-facing gable situated above a two-story bay. Square columns sit on masonry piers at the porch.

The single-story house at **714 North Eleventh Street** (Building Number 28) was built in 1917. This Craftsman home has a front-facing gable, asphalt roof. Triangular-knee braces and exposed rafter tails are found at the eaves. A partial-width gable-front porch is enclosed. The building sits on a concrete block foundation.

Constructed in 1925, the house at **722 North Eleventh Street** (Building Number 27) is a two-story stucco building. The roof has a side-facing gable with hipped-on edges at either end. Rafter tails are exposed. Hoods at the east and north doors are supported with triangular knee braces. The hood at the front door mimics the eyebrow dormer at the roof. The front door and sidelights have multiple square panes. To the north of the front door is a brick masonry chimney.

United States Department of the Interior
National Park Service

National Register of Historic Places
Continuation Sheet

North Eleventh Street Historic District

Name of Property

Gage County, Nebraska

County and State

Section 7 Page 4

with battered sides. Windows typically have a multi-paned upper sash and single-pane lower sash with brick sills. The building sits on a brick foundation.

The two-story, side-gable home at **810 North Eleventh Street** (Building Number 25) has an asphalt roof. The stucco building was constructed in 1924. Centered on the building is a front-facing gable dormer with triangular-knee braces and a pair of double-hung, four-over-one windows. In the eaves, rafter tails are exposed. Square wood posts with battered sides sit on brick piers. The Craftsman-detailed front door is flanked by sidelights.

A one-and-a-half story building, the home at **822 North Eleventh Street** (Building Number 23) is a side-gabled structure. The building was constructed in approximately 1920. The eaves have exposed rafter tails and triangular-knee braces. A front-facing gable dormer is centered on the front façade and features three, six-over-six windows. Square wood porch posts with battered sides rest on brick piers. Five-over-one windows flank either side of a multi-paned, Craftsman detailed door.

The house at **909 North Eleventh Street** (Building Number 15) was built in 1917. This one-and-one-half story, wood clapboard building has a side-gable and asphalt roof. The partial-width porch has a front-facing gable supported by square columns with battered sides that sit on a wood clapboard knee-wall. Triangular-knee braces and exposed rafter tails decorate the eaves.

Constructed in 1917, the house at **915 North Eleventh Street** (Building Number 16) is a cross-gabled, single-story structure with an asphalt roof. The front-facing gable has wide, overhanging eaves and triangular-knee braces at the roof beams. The screen-in porch on the south side of the primary façade has an asymmetrical front-facing gable. Four double-hung windows are grouped together on the street façade.

The single-story house at **917 North Eleventh Street** (Building Number 17), constructed in 1917, has a side-facing, gabled asphalt roof. The partial-width porch has a front-facing gable with exposed roof beams at the eaves. The porch roof is supported by square wood columns with battered sides sitting on masonry piers. The centrally located door is flanked on either side with a three-part window. The transoms are original to the building.

Constructed in 1917, the house at **923 North Eleventh Street** (Building Number 18) is a side-gabled, one-and-a-half story building. A side-gabled roof dormer and three double hung one-over-one windows are centered on the building. Three-over-one and four-over-one windows flank either side of the centrally located front door. The full-width porch wraps around the north façade.

CONTEMPORARY

Contemporary style buildings were built throughout the United States during the mid twentieth century and into the 1980s. These homes hearken back to the flat-roofs and lack of decorative detailing characteristics of the International style. The only exception is that Contemporary style buildings do not employ stark white stucco wall surfaces. Instead the wall surfaces are various combinations of wood, brick or stone.

United States Department of the Interior
National Park Service

National Register of Historic Places
Continuation Sheet

North Eleventh Street Historic District

Name of Property

Gage County, Nebraska

County and State

Section 7 Page 5

There are two Contemporary style buildings in the North Eleventh Street Historic District. One is at **809 North Eleventh Street** (Building Number 9). This small, single-story Contemporary house was built in 1951 and has a cross-gabled, hipped, asphalt shingle roof. Thin decorative steel posts support a partial-width metal porch awning. The brick masonry building has a combination of fixed windows and windows with horizontally oriented two-over-two wood units. A three-part window at the front façade exhibits multiple rectangular-paned side windows.

The other Contemporary style house found in the Historic District is at **906 North Eleventh Street** (Building Number 21). This single-story, 1951 house is rectangular in plan with a hipped roof. The shorter side of the rectangular-shaped building faces Eleventh Street. Double-hung windows with two-over-two sashes sit directly below closed eaves. The front door is centered on the brick masonry façade and the partial-width front porch is recessed below the building's hipped roof. A three part window, composed of a large picture window and side windows each with four rectangular panes is located to the south of the front door. A simple metal rail runs along the perimeter of the porch.

RANCH

There is only one Ranch style home in the North Eleventh Street Historic District. It is located at **900 North Eleventh Street** (Building Number 22). First introduced in California in the mid-1930s, the Ranch style became the predominant residential building style during the 1950s and 1960s. Ranch style homes are typically asymmetrical, single-story structures with low-pitched roofs and moderate to wide eave overhangs. Large picture windows in the living areas are also typical. The building at 900 North Eleventh Street was constructed in 1952, when the style was becoming increasingly popular. This single-story Ranch home has a hipped, asphalt roof and ashlar bond, stone masonry walls. The entrance is located at the southwest corner of the building and a large overhead garage door is located on the southeast. A secondary entrance can be found on the south façade. Two-over-two windows sit directly under closed eaves. The west façade exhibits a three-part picture window with multi-paned rectangular side windows.

PRIMARY INFLUENCES

There are a few buildings in the North Eleventh Street Historic District that reflect the influence of a particular architectural style. These structures may exhibit a few details or features of that style. Massing, entrances, cornices, and windows provide clues to influences. Examples of such buildings are indicated below.

The house at **612 North Eleventh Street** (Building Number 34) exhibits influences of the Italianate style. Italianate homes were popular in the United States beginning in the 1840s and continuing through the mid 1880s. In Nebraska this architectural style was utilized in the late 1850s until the turn of the nineteenth century. The Italianate emphasizes height and cubic massing. Buildings typically have low-pitched roofs with widely overhanging eaves supported by decorative brackets set in a highly ornamented trim band. The house at 612 North Eleventh Street was built in 1909. The home's massing, door, window fenestration and wide, overhanging eaves indicate Italianate influences. The two-story, wood clapboard home has a hipped asphalt roof and a full-width porch. Double-hung, one-over-one wood windows and a centrally located front door punctuate the façade. Turned wood porch posts support the almost flat porch roof.

United States Department of the Interior
National Park Service

National Register of Historic Places Continuation Sheet

North Eleventh Street Historic District

Name of Property

Gage County, Nebraska

County and State

Section 7 Page 6

Constructed in 1892, the house at **617 North Eleventh Street** (Building Number 3) also exhibits characteristics of the Italianate style. The massing of the two-story building, overhanging eaves and pairs of small decorative brackets in the closed eaves indicate Italianate influences. The brackets sit in a wide undecorated trim band directly below the eaves. The hipped roofed building features one-over-one double hung windows. Decorative metal porch posts support the hipped-roof porch.

MULTIPLE INFLUENCES

A few buildings in the North Eleventh Street Historic District exhibit influences of a more than one architecture style, such as building at **910 North Eleventh Street** (Building 20). This Craftsman style home with Tudor influences was built in 1925. Tudor style homes were popular from the 1890s until the 1940s. Buildings constructed in the Tudor style typically had steeply pitched roofs that were usually side-gabled with a prominent front-facing cross gable. The homes also utilized decorative half-timbering. The most prominent architectural element of the two-story building is the Tudor style, asymmetrical, front-facing hipped-gable roof. The south facing cross gable roof is similar to the street facing façade. Triangular-knee brackets, wood trim, a stucco finish and double hung window groupings enliven the wall face. A chimney is located on the north side of the building.

The **S.P. Lester House at 920 North Eleventh Street** (Building Number 19) exhibits characteristics of the Italianate and Craftsman styles. The massing, fenestration and porch detailing appear to follow the Italianate style. Exposed rafter tails in the eaves of the hipped roof indicate Craftsman influence. The two-story house was constructed in 1888 and is sited on three building lots. A two-tiered porch wraps around the west and south facades. Square wood porch posts with beveled edges sit on masonry piers. Italianate brackets align with each of the porch posts.

BUILDING TYPES

The American Foursquare was one of the most popular housing types during the first two decades of the twentieth century. The cubic form of an American Foursquare home was practical, versatile and easy to construct. Ornamental details could easily be applied. Identifying features are a nearly square floor plan, a blocky shape topped by a low pyramidal hipped roof and a full-width porch.

The American Foursquare home at **823 North Eleventh Street** (Building Number 11) exhibits Craftsman detailing. The building was constructed in 1902. Two-stories in height, this hipped asphalt roof building has a centrally-located, hipped-roof dormer. Decorative rafter tails are exposed at the eaves. Windows are double-hung, four-over-one units. Masonry piers support a full-width porch and low-pitched hipped roof.

The house at **804 North Eleventh Street** (Building Number 26) is a Gable Ell structure. Popular after the Civil War, use of the Gable Ell form continued in rural areas and small towns until the 1920s. Gable Ell buildings have two gabled ends that intersect at right angles. The roofline of both cross gables is at a consistent height. The long wing usually faces the road and has a decorative porch. The two-story home at 804 North Eleventh Street reflects the cross gable roof of a Gable Ell. Built in 1902, the home has two primary decorative features, an inset gable-front dormer and a leaded glass transom over the large window at the front-facing gable. The porch posts are square and rest on a knee wall.

United States Department of the Interior
National Park Service

**National Register of Historic Places
Continuation Sheet**

North Eleventh Street Historic District

Name of Property

Gage County, Nebraska

County and State

Section 7 Page 7

VERNACULAR

Structures influenced more by building methods that are traditional to a particular location and by builders who were more influenced by local climate, available building materials and ethnic building traditions than by architectural fashions and styles are considered to be vernacular. Vernacular buildings are classified based on their massing, function, construction materials and lack detailing based on formal architectural styles. There are a few contributing vernacular buildings found in the North Eleventh Street Historic District. They are located at **622 North Eleventh Street** (Building Number 32), **710 North Eleventh Street** (Building Number 30), **712 North Eleventh Street** (Building Number 29), **903 North Eleventh Street** (Building Number 14) **1016 Summit Street** (Building Number 12) and **1020 Summit Street** (Building Number 13).

NON-CONTRIBUTING

There are seven buildings that do not contribute to the historic character and significance of the North Eleventh Street Historic District. Although much of the original Queen Anne detail is still extant in the gables, the house at **821 North Eleventh Street** (Building Number 10) has undergone substantial window size modification and is therefore considered non-contributing. A number of buildings were constructed after the period of significance. They are located at **701 North Eleventh Street** (Building Number 5), **719 North Eleventh Street** (Building Number 6), **814-816 North Eleventh Street** (Building Number 24) **1016 Summit** (Building Number 12) and **1015 Jefferson Street** (Building Number 7).

North Eleventh Street Historic District

Name of Property

Gage County, Nebraska

County and State

8. Statement of Significance**Applicable National Register Criteria**

(Mark "X" in one or more boxes for the criteria qualifying the property for National Register listing.)

- ☐ **A** Property is associated with events that have made a significant contribution to the broad patterns of our history.
- ☐ **B** Property is associated with the lives of persons significant in our past.
- ☒ **C** Property embodies the distinctive characteristics of a type, period, or method of construction or represents the work of a master, or possesses high artistic values, or represents a significant and distinguishable entity whose components lack individual distinction.
- ☐ **D** Property has yielded, or is likely to yield information important in prehistory or history.

Criteria Considerations

(Mark "X" in all the boxes that apply.)

Property is:

- ☐ **A** Owned by a religious institution or used for religious purposes.
- ☐ **B** Removed from its original location.
- ☐ **C** A birthplace or a grave.
- ☐ **D** A cemetery.
- ☐ **E** A reconstructed building, object, or structure.
- ☐ **F** A commemorative property.
- ☐ **G** Less than 50 years of age or achieved significance within the past 50 years.

Narrative Statement of Significance

(Explain the significance of the property on one or more continuation sheets.)

Areas of Significance

(Enter categories from instructions.)

Architecture

Period of Significance

1888-1959

Significant Dates

1888

1959

Significant Person

(Complete if Criterion B is marked above.)

N/A

Cultural Affiliation

N/A

Architect/Builder

See Section 8

9. Major Bibliographical References**Bibliography**

(Cite the books, articles, and other sources used in preparing this form on one or more continuation sheets.)

Previous documentation on file (NPS):

- ☐ Preliminary determination of individual listing (36 CFR 67) has been requested
- ☐ Previously listed in the National Register
- ☐ Previously determined eligible by the National Register
- ☐ Designated a National Historic Landmark
- ☐ Recorded by Historic American Buildings Survey # _____
- ☐ Recorded by Historic American Engineering Record # _____

Primary location for additional data:

- ☒ State Historic Preservation Office
- ☐ Other State agency
- ☐ Federal agency
- ☒ Local Government
- ☐ University
- ☒ Other
- Name of repository: Gage County Historical Society, Beatrice Library

United States Department of the Interior
National Park Service

National Register of Historic Places Continuation Sheet

North Eleventh Street Historic District

Name of Property

Gage County, Nebraska

County and State

Section 8 Page 1

STATEMENT OF SIGNIFICANCE

The North Eleventh Street Historic District in Beatrice, Nebraska is locally significant under National Register Criterion C as an intact collection of late nineteenth and early to mid twentieth century Revivals and American movements. The period of significance for the Historic District begins with the construction of the S.P. Lester House in 1888 and ends in 1959 when the house at 1020 Summit was constructed.

THE CITY'S FOUNDING AND DEVELOPMENT

Beatrice, the county seat of Gage County, was settled in the southeast portion of the state in 1857, only three years after Nebraska was organized as a territory³ at a natural ford on the Big Blue River. Gage County was one of the original 19 counties established in 1854 by the Nebraska territorial legislature. The settlement was established in a fertile valley where the DeRoin Trail⁴ crossed the timber-skirted Big Blue River in southeast Nebraska. Another watercourse, Indian Creek, also runs through the original settlement of Beatrice. These two waterways create a plateau with gently rolling hills on every side. To the party of gentlemen that settled on this location for their future city, the valley must have seemed both beautiful and fertile, with its terrain, rivers, hardwood timber and waving prairie grasses.

By August of 1859, the town site was officially surveyed, platted and entered under the 1844 National Townsite Act. Most of the original town plat was sited on the east bank at the point where Indian Creek flows into the Big Blue River. Three years after its founding Beatrice boasted a population of 85. When President Abraham Lincoln signed into law the Homestead Act in 1862, considered by many to be one of the most important pieces of Legislation in the history of the United States, the settlement of the west and Beatrice truly began.⁵ In 1863, the first claim filed in the United States under this act was made by Daniel Freeman shortly after midnight on January 1, 1863 for a claim four miles west of Beatrice. Homestead National Monument now marks the location of Freeman's claim.

From 1862 through 1890, Beatrice experience tremendous growth. Seven years after Freeman filed his land claim, the community was bustling with a population of approximately 624⁶ residents and by the time the city was officially incorporated in 1872 the population had reached 1,500.⁷ Beatrice continued to grow, aided by the arrival of the

³ Nebraska was officially recognized as a territory with the passage of the 1854 Kansas-Nebraska Act.

⁴ This trail is also known as the Main St. DeRoin Trail and Brownsville Road. It followed the Native American Otoe-Omaha Trail. The trail began at St. Deroin, Missouri and connected to the Oregon Trail near Alexandria, Nebraska. This was the easiest, most direct route from Missouri to Fort Kearney. Later this route was also known as the Nebraska City-Beatrice-Marysville Stage route. Today this route is now Highway 136 (once known as the Goldenrod Highway and Highway 3) into Beatrice and Highway 4 through Homestead National Monument to the west of Beatrice.

⁵ Under this Act 10% of the land in the United States was claimed and settled by private citizens. Each homesteader could claim a 160 acre parcel of land if they resided on, built a home, made improvements and farmed the land for five years.

⁶ Dobbs, Hugh J. *History of Gage county, Nebraska: a narrative of the past with special emphasis upon the pioneer period of the county's history, its social, commercial, educational, religious, and civic development from the early days to the present time.* (Higginson Book Company, 1918), 191.

⁷ Graff, Jane. *Nebraska: Our Towns... East Southeast* (Dallas: Taylor Publishing Co., 1992), 46.

United States Department of the Interior
National Park Service

National Register of Historic Places
Continuation Sheet

North Eleventh Street Historic District

Name of Property

Gage County, Nebraska

County and State

Section 8 Page 2

Burlington and Missouri River Railroad. By 1880 the population had reached 2,447⁸ and in 1890 it reached its highest point, 13,835.⁹

The city's physical growth kept up with the rise of population. An 1874 bird's eye view of Beatrice shows boundaries of the city at that time (See Section 10, Page 19). The street illustrated on the furthest north end of town is Washington Street, the furthest south is Scott Street, Tenth Street is on the east and the Big Blue River is on the west. By this time a distinct downtown area could be defined with most early commercial buildings facing onto Court Street. This east-west road is considered Beatrice's main street and was the original route of the DeRoin Trail through town. By 1890 the commercial core of downtown stretched from the Big Blue River on the west end of Court Street up to Sixth Street on the east.

Perpendicular to Court Street, Sixth Street eventually became the major north-south road through town. Early in Beatrice's history multiple bridges were constructed at two locations over the Big Blue River, one at Court Street and the other at South Sixth Street. South Sixth Street's prominence continued to grow once Lincoln, Nebraska, located 40 miles to the north, became the state's newly established capital city.

SMITH BROTHERS AND FAIRVIEW ADDITIONS

As the city grew, many land additions were made to the original three hundred and twenty acre town site. Among the principle additions to the city, as identified in Hugh Jackson Dobbs' 1918 *History of Gage County*, were the Smith Brother's Addition¹⁰ and Fairview Addition¹¹ located to the northeast of the original town site.¹² The North Eleventh Street Historic District is located on land that is part of both of these additions.

The Smith Brother's Addition was filed in 1883. Brothers John E. and Samuel C. Smith arrived in Beatrice in 1872 and shortly after opened the Smith Brothers' Bank. In 1877 they also organized the First National Bank of Beatrice and later another company, Smith Brothers Loan and Trust Company. This was a farm-loan firm, which was heavily invested in western Kansas and Nebraska land.¹³ During the same period they were also investing and establishing other banks in

⁸ Dobbs, Hugh J. *History of Gage county, Nebraska: a narrative of the past with special emphasis upon the pioneer period of the county's history, its social, commercial, educational, religious, and civic development from the early days to the present time*, 191.

⁹ Ibid.

¹⁰ The Smith Brother's Addition encompasses 9 full blocks and 3 half blocks. The south boundary is the alley south of Grant Street. The boundary on the north is Jefferson, North Tenth Street on the west and North Thirteenth Street on the east.

¹¹ The Fairview Addition encompasses 24 full blocks. The north south boundary between Eighth Street on the west and Thirteenth Street on the east is Jackson and Jefferson respectively. The addition also includes the blocks bounded by Garfield on the south, North Sixth Street on the west, Jackson on the north and North Eighth Street on the east.

¹² Dobbs, Hugh J. *History of Gage county, Nebraska: a narrative of the past with special emphasis upon the pioneer period of the county's history, its social, commercial, educational, religious, and civic development from the early days to the present time*, 191.

¹³ After the 1893 panic, the farm-loan firm was passed into receivership and the brothers' stock in the First National Bank was sold to other investors. The Smith Brother's went on to start another farm-lending business, Farmers Trust Company.

United States Department of the Interior
National Park Service

National Register of Historic Places
Continuation Sheet

North Eleventh Street Historic District

Name of Property

Gage County, Nebraska

County and State

Section 8 Page 3

other parts of the state.¹⁴ The brothers were "prominent factors in the growth and development of the city of Beatrice, the county of Gage and the state of Nebraska."¹⁵

Samuel C. Smith was also an investor in the Fairview addition with two other men, A.S. Paddock and J.B. Weston. The men filed the Fairview Addition in 1884. Smith's partners were also prominent men in the development of Beatrice. Algernon Sidney Paddock (1830-1897), a lawyer, came to Nebraska in 1857, served as territorial secretary of state for Nebraska and later served two terms as Nebraska State Senator. In 1872 he moved to Beatrice, Nebraska and was a force in the community until he passed away.

The other investor in the Fairview addition was Jefferson Burns Weston (1821-1905), one of the founding fathers of Beatrice. Weston was a member of the party of men that founded Beatrice in 1857. He was also one of the six men who stayed at the newly established settlement through that first winter.¹⁶ Afterwards he traveled to Chicago, became a lawyer then engaged in freighting, mining and other enterprises in the gold fields of Colorado. In 1868 he returned to Beatrice where he remained until his death, except during his term as Nebraska State Auditor from 1873 until 1879. In 1883 Weston joined seven other men and organized the Beatrice National Bank serving as president for the next 20 years.

BEATRICE'S STREETCAR SYSTEM

In 1885, the Beatrice Transit Railway Company incorporated and began running a streetcar from downtown to the northern side of the city. The streetcar route primarily traveled east from First Street along Court Street. Once at Sixth Street the streetcar route turned north and traveled up to Summit Street.

The route proved successful and during the next year it was extended north from Summit Street to Jackson Street. From there it traveled east along Jackson until arriving at North 13th Street. The line went south four blocks, turned west to North Eleventh Street and then went south three blocks to Grant Street. During the next year the line was extended along Grant Street and the loop was complete.

The hopes of the nine men who invested in the company when it was incorporated in 1885 were high. Two of those men were John E. and Samuel C. Smith.¹⁷ When the line first opened in 1885 three cars were bought along with a number of horses and stoves were added to the cars during the first winter. The horses and cars provided a regular twenty-minute, one-way trip. By 1887 the company had added four cars and the number of horses and mules rose. The venture did not prove profitable for the original investors despite being well patronized. Competing companies

¹⁴ Among these was the Smith Brothers Bank in Red Cloud, Nebraska. Samuel made his home in Red Cloud during the late 1870s.

¹⁵ Dobbs, Hugh J. *History of Gage county, Nebraska: a narrative of the past with special emphasis upon the pioneer period of the county's history, its social, commercial, educational, religious, and civic development from the early days to the present time*, 230.

¹⁶ *Homestead Centennial Souvenir Program: June 10-16, 1962* (Beatrice, NE, 1962), 25.

¹⁷ A.S. Paddock was one of the seven men who first organized the Beatrice Transit Railway Company in 1884. Paddock was not named a director when the promoters drew up new articles of incorporation in August of 1885 nor was he listed as one of the directors when the amended the articles the following month.

United States Department of the Interior
National Park Service

National Register of Historic Places
Continuation Sheet

North Eleventh Street Historic District

Name of Property

Gage County, Nebraska

County and State

Section 8 Page 4

constructed other streetcar lines elsewhere in Beatrice and by 1892 the companies had consolidated and electrified some of their lines. When land values shrank and money became scarce during the panic of 1893, the streetcar lines were forced into receivership.

DEVELOPMENT OF NORTH ELEVENTH STREET NEIGHBORHOOD

In the late 1880s and early 1890s the land encompassed by the Smith Brothers' and Fairview Addition offered much promise. The Beatrice Street Railway Company had created a loop around the area and in 1891 a new school was built at 12th and Summit Street.

By 1892 four of the houses currently in the North Eleventh Street Historic District were already constructed, the **D.H. Lingle House¹⁸ at 613 North Eleventh** (Building Number 2), the **W.N. Farlow House¹⁹ at 617 North Eleventh** (Building Number 3), the **J. Henderson House²⁰ at 803 North Eleventh Street** (Building Number 8) and the **S.P. Lester House²¹ at 920 North Eleventh Street** (Building Number 19). A prominent Beatrice resident built each house: two were real estate agents, one a banker and the other a successful businessman. The S.P. Lester House still occupies the largest land parcel in the North Eleventh Street Historic District.

From 1892 until 1900 construction in the Historic District halted. The city of Beatrice was dramatically impacted by the financial situation in 1893. The population for the city that was growing so quickly in the years before the 1893 panic, dropped from over 13,000 residents in 1890 to below 8,000 people in 1900. During this time real estate values dropped and a number of Beatrice factories and banks failed, including the American Bank of Beatrice, the same bank founded by a resident of the Historic District, John Henderson.

During the period after the 1893 panic some of the original investors in the area were able to hold on to their land while others were not. Those that were able to keep their original investment waited for better days to come. Good years did follow and during the first two decades of the twentieth century Beatrice prospered. New homes, businesses, school and civic projects were undertaken. Although it did not climb to the heights of 1890, by 1920 Beatrice's population had grown to 9,644.

It was during this time that the North Eleventh Street Historic District experienced its greatest growth. Nineteen buildings were constructed between 1900 and 1920. That translates into 53% of the buildings in the Historic District

¹⁸ Daniel H. Lingle and William Ozman founded Lingle and Ozman Real Estate in Beatrice. Ozman also owned a home in the North Seventh Street Historic District at 602 North Eleventh Street that was replaced in 1915 with the building standing today.

¹⁹ William N. Farlow and his wife Jennie (Griffith) Farlow moved to Beatrice in 1892 and constructed this home during that same year but sold it four years after. During the next few years Farlow developed a successful real-estate business and by 1909 was a major stockholder in the Beatrice Brick Company.

²⁰ John Henderson was one of three men who organized the American Bank of Beatrice in 1888. He worked for First National Bank after first settling in Beatrice in 1879.

²¹ Sherman P. Lester (1844-) and his wife Agnes (Blodgett) Lester arrived in Beatrice in 1872. Lester was involved in the livery business and was active in the City Council in the early 1880s. By 1883 his business had proved so successful he purchased additional pastureland north of Beatrice just for his horses and stock.

United States Department of the Interior
National Park Service

National Register of Historic Places
Continuation Sheet

North Eleventh Street Historic District

Name of Property

Gage County, Nebraska

County and State

Section 8 Page 5

were built within a twenty-year period. The growth of the Historic District after 1920 greatly decreased, with only 11% of the buildings being constructed from 1921 to 1950. Between 1950 and 1959 there was renewed construction activity and five new houses were built.²²

Some houses were built as rental homes that were eventually purchased by individuals, while other people purchased lots and had their own home built. Of the thirty-six buildings found in the historic district over half were originally built for rental purposes or were constructed for potential homebuyers. Over time most of these buildings were purchased and owned by the occupant.

Due to the nature of the district, very little is known about the builders and architects responsible.²³ Local builders such as Wilkinson and Powell and the Treutwein Brothers were involved in the construction or repair of a few homes in the district such as **622 North Eleventh Street** (Building Number 32) and **810 North Eleventh Street** (Building Number 25). In some cases the owner of the building was the party responsible for its construction. Such is the case at **722 North Eleventh Street**. Carl Jasperson was a Beatrice contractor who personally built his seven-room bungalow in 1925. The local newspaper mentions "one of the finest cars of brick and tile from Endicott ever shipped to Beatrice"²⁴ was used for Carl Jasperson's home.

Buildings throughout the district exhibit a high level of craftsmanship and use of quality materials despite being constructed and initially used for rental purposes. This has resulted in a very cohesive district where it is difficult to identify if a building was originally constructed for rental or by a homeowner.

CONCLUSION

The North Eleventh Street Historic District is significant under Criterion C as an intact collection of late nineteenth and early to mid twentieth century Revivals and American movements. Its period of significance begins in 1888 and ends in 1959. Difficult economic forces changed the course of the streetcar neighborhood begun by prominent Beatrice businessmen. When Beatrice began to thrive after the turn of the nineteenth century, the North Eleventh Street Historic District began to grow again. Each Craftsman Style home in the Historic District lends a clue to the neighborhood's period of growth. The style's popularity during the first two decades of the twentieth century coincides with the development of the North Eleventh Street Historic District. Whether the buildings were constructed by the homeowner or for rental purposes, the quality and workmanship remained high. The buildings in the Historic District may have been constructed to serve different purposes, but their scale, architectural style, quality materials and craftsmanship presents a cohesive whole.

²² This would 14% of the buildings constructed in the North Eleventh Street Historic District.

²³ The city of Beatrice has not kept building permit records prior to 1949.

²⁴ BDS, March 18, 1925.

United States Department of the Interior
National Park Service

National Register of Historic Places
Continuation Sheet

North Eleventh Street Historic District

Name of Property

Gage County, Nebraska

County and State

Section 9 Page 1

BIBLIOGRAPHY

Books

Allen, Thos. R. *In Word & Picture: Beatrice, Nebraska*. Beatrice, Nebraska: Milburn & Scott Company, 1913. Chapman

Beatrice Nebraska: Souvenir Albums. 1887.

Beatrice Nebraska: Souvenir Album. 1891.

Chapman Brothers. Portrait and Biographical Album of Gage County Nebraska. Gage County Historical Society, 1997. Commemorative History of the Gage County Courthouse, 1991.

Dobbs, Hugh J. *History of Gage county, Nebraska: a narrative of the past with special emphasis upon the pioneer period of the county's history, its social, commercial, educational, religious, and civic development from the early days to the present time*. Higginson Book Company, 1918.

Gibson, Judy L. *Beatrice Nebraska Centennial 1857-1957. Heritage of the Blue Souvenir Program, July 21-27, 1957*. Beatrice, NE: Judy L. Gibson, 2005.

Gordon, Stephen C. *How To Complete the Ohio Historic Inventory*. Colombus, OH: Ohio Historic Preservation Office, 1992.

Graff, Jane. *Nebraska: Our Towns... East Southeast*. Dallas: Taylor Publishing Co., 1992.

Homestead Centennial Souvenir Program: June 10-16, 1962. Beatrice, NE, 1962.

Kansas City, Wyandotte & Northwestern Railway. *Beatrice, Gage County, Nebraska, Past, Present, and Future, Its Industries, and The Inducements It Offers The Home-Seeker, Investor, and Manufacturer*. Kansas City: Electric Print Co., 1890.

Kniffen, Fred B. "Louisiana House Types," in the *Annals of the Association of American Geographers*. Vol. 26 no. 4, Dec. 1936.

Marshal, Howard W. *Folk Architecture in Little Dixie*. Columbia, MO: University of Missouri Press, 1981.

McAlester, Virginia & Lee. *A Field Guide to American Houses*. New York: Alfred A Knopf, 2004.

Murphy, David R. "Preliminary Considerations Toward a Supratypology for American Houses," Nebraska State Historical Society, Lincoln, NE: July, 1985.

United States Department of the Interior
National Park Service

National Register of Historic Places
Continuation Sheet

North Eleventh Street Historic District

Name of Property

Gage County, Nebraska

County and State

Section 9 Page 2

Murphy, David R. "Rationale and Formulation of a Supratypology for Vernacular Houses,": in Thomas Carter and Bernard L. Herman (eds.) *Perspectives in Vernacular Architecture III*. Columbia, MO: University of Missouri Press, 1985.

Thos. Jennings, Jan. *American Vernacular Architecture 1870-1940*. New York, N.Y.: Van Nostrand Reinhold, 1988.

R. Allen. In Word & Picture: Beatrice, Nebraska. Beatrice, Nebraska: Milburn & Scott Company, 1913.

Stevenson, Katherine C. and H. Ward Jandl, *Houses by Mail, A guide to Houses from Sears, Roebuck and Company*. Washington, D.C.: The Preservation Press, 1986.

Upton, Dell and John Michael Vlach. *Common Places, Readings in American Vernacular Architecture*. Athens, GA: University of Georgia Press, 1986.

Newspaper

Daily Express (Beatrice, Nebraska).

Beatrice Daily Sun (Beatrice, Nebraska).

"Street Cars Once Hummed Up And Down Streets of Beatrice But Boom Days Came To End." *Beatrice Daily Sun* [Beatrice, Nebraska] 1923, Jubilee ed.

Maps

Sanborn Map Company. Insurance Maps of Beatrice. New York: 1889. Digital.

Sanborn Map Company. Insurance Maps of Beatrice. New York: 1896. Digital.

Sanborn Map Company. Insurance Maps of Beatrice. New York: 1900. Digital.

Sanborn Map Company. Insurance Maps of Beatrice. New York: 1906. Digital.

Sanborn Map Company. Insurance Maps of Beatrice. New York: 1913. Digital.

Sanborn Map Company. Insurance Maps of Beatrice. New York: 1923. Digital.

Sanborn Map Company. Insurance Maps of Beatrice. New York: 1948. Digital.

Other

Beatrice City Directories, 1886 - 195

North Eleventh Street Historic District

Name of Property

Gage County, Nebraska

County and State

10. Geographical Data

Acreage of property 13

UTM References (place additional UTM references on a continuation sheet).

	Zone	Easting	Northing		Zone	Easting	Northing
1.	14	692139	4460616	3.	14	692235	4460161
2.	14	692235	4460616	4.	14	692139	4460161

[] See continuation sheet

Verbal Boundary Description

(Describe the boundaries of the property on a continuation sheet.)

Boundary Justification

(Explain why the boundaries were selected on a continuation sheet.)

11. Form Prepared By

name/title Christina A. Jansenorganization Alley Poyner Macchietto Architecturedate August 2009street & number 1516 Cuming Streettelephone 402.341.1544city or town Omahastate NE zip code 68102

Additional Documentation

Submit the following items with the completed form:

Continuation Sheets**Maps**A **USGS map** (7.5 or 15 minute series) indicating the property's location.A **Sketch map** for historic districts and properties having large acreage or numerous resources.**Photographs**Representative **black and white photographs** of the property.**Additional items**

(Check with the SHPO or FPO for any additional items.)

Property Owner

(Complete this item at the request of the SHPO or FPO.)

name/title Multiple Owners, See Section 10

street & number _____

telephone _____

city or town _____

state _____

zip code _____

Paperwork Reduction Act Statement: This information is being collected for applications to the National Register of Historic Places to nominate properties for listing or determine eligibility for listing, to list properties, and to amend existing listings. Response to this request is required to obtain a benefit in accordance with the National Historic Preservation Act, as amended, (15 USC 470 et seq.).

Estimated Burden Statement: Public reporting burden for this form is estimated to average 18.1 hours per response including the time for reviewing instructions, gathering and maintaining data, and completing and reviewing the form. Direct comments regarding this burden estimate or any aspect of this form to the chief, Administrative Services Division, National Park Service, P.O. Box 37127, Washington, DC 20013-7127; and the Office of Management and Budget, Paperwork Reduction Project (1024-0018), Washington, DC 20503.

United States Department of the Interior
National Park ServiceNational Register of Historic Places
Continuation Sheet

North Eleventh Street Historic District

Name of Property

Gage County, Nebraska

County and State

Section 10 Page 1

Current Building Owners

Building ID #	House Number	Street	Current Owner/Address
1	601	N 11th	BISSEGER, RONALD & SHARON % FIRST NATIONAL ACCEPTANCE CO / 241 E SAGINAW P O BOX 980 EAST LANSING, MI 48823
2	613	N 11th	WILSON, KENT C & NANCY M / 21632 S 1 RD BEATRICE, NE 68310-1655
3	617	N 11th	BRAGG, WILLIAM L & VIOLA R / same
4	623	N 11th	MEAGHER, STEVEN R & REBECCA A / same
5	701	N 11th	FIRST NATIONAL BEATRICE BANK & COMPANY / PO BOX 338 BEATRICE, NE 68310
6	719	N 11th	FIRST NATIONAL BEATRICE BANK & COMPANY / PO BOX 338 BEATRICE, NE 68310
7	1015	Jefferson	WILMA J TRUSTEE / 1015 JEFFERSON BEATRICE, NE 68130
8	803	N 11th	COZINE, RODNEY & SUSAN / same
9	809	N 11th	CARNES, ROSINA, TRUSTEE / same
10	821	N 11th	ROWDEN, JERRY D JR & ROSEBAUGH, JACQUE L / 1717 LINCOLN ST BEATRICE, NE 68310
11	823	N 11th	AVEYARD, ROGER & DIANNE / same
12	1016	Summit	HUDSON BARBARA JO / 915 NO 10 BEATRICE, NE 68310
13	1020	Summit	SHEPARD, GERALD 10 % SHIRLEY SHEPARD / 1020 SUMMIT BEATRICE, NE 68130
14	903	N 11th	FRITZEN, STANLEY & DENISE / 2708 ELK ST BEATRICE, NE 68310
15	909	N 11th	CLINE, LANCE T & LANI L / same
16	915	N 11th	WILHELM, ALLEN L & HEIDI A PHILIPPI / same
17	917	N 11th	HIPPEN, JOHN W & JACQUELINE E / 60906 HWY 4 LEWISTON, NE 68380-0000
18	923	N 11th	THORNBURG, KEITH A. & DORIS A / same
19	920	N 11th	KASSEBAUM, LARRY E / 902 N 11TH BEATRICE, NE 68310-0000
20	910	N 11th	STONE, GEOFF M & DAWN N / same
21	906	N 11th	MEINTS, NICHOLAS A & KIMBERLY K / same
22	900	N 11th	BILLESBACH, LEO B & AGNES M / same
23	822	N 11th	HULS, WAYNE A & CHRISTINE A / same
24	814-816	N 11th	YOUNG, THOMAS L & JANE R, TRUSTEE 13100 E HOYT RD FILLEY, NE 68357-0000
25	810	N 11th	SCHULTZ, JESSICA R / same
26	804	N 11th	BURLING, GREGORY D. & REBECCA L. / same
27	722	N 11th	NICKELS, JERRY L & JUDY ANN / same
28	714	N 11th	RHOADES, GRANT R / same

United States Department of the Interior
National Park Service

**National Register of Historic Places
Continuation Sheet**

North Eleventh Street Historic District

Name of Property

Gage County, Nebraska

County and State

Section 10 Page 2

<i>Building ID #</i>	<i>House Number</i>	<i>Street</i>	<i>Current Owner/Address</i>
29	712	N 11th	CRAMER, DAVID A & RHONDA J. / 702 N 11TH ST BEATRICE, NE 68310
30	710	N 11th	OLIVER, BEAU & JAIMI / same
31	702	N 11th	CRAMER, DAVID A & RHONDA J / same
32	622	N 11th	PARDE, DAVID A / 22983 S 36 RD BEATRICE, NE 68310-6820
33	616	N 11th	MCGRURY, CHESTER W III / same
34	612	N 11th	BAKER, GLEN H JR. & NANCY J / 1305 SANDPIPER DR BEATRICE, NE 68310-0000
35	610	N 11th	DOUGHERTY, PAUL J & DELORES J CO-TRUSTEES / same
36	602	N 11th	DORN, ARNOLD G & ALMA H / same

United States Department of the Interior
National Park ServiceNational Register of Historic Places
Continuation Sheet

North Eleventh Street Historic District

Name of Property

Gage County, Nebraska

County and State

Section 10 Page 3

Previous Building Residents

Bldg ID #	House Number	Street	Year Built	Status	Previous Owner
1	601	N 11th	1910	C	Chas & Ada Hughes (1912 Dobbs); Frank D Hughes, son of Chas (1925-1954 CD); William B Rist (1956-1959 CD)
2	613	N 11th	1890	C	Daniel Hardy Lingle (1890 CD); Harry E & Bessie Spafford (1902 CD); William F & Anna Crangle + Kate & M Belle Ebright (schoolteachers at Fairview School) (1904-1929 CD); Mrs Anna Crangle, wid. of Wm. (1931-1941 CD); Lila E Crangle, daught of Wm. F (1947-1959 CD); Mrs. Anna Janzen (1956-1959 CD)*
3	617	N 11th	1892	C	W.N. Farlow (1892); Clara Baker (1896); Walter A and Rebecca A Noel (1896); Walter A Noel, clk Co Treas (1904 CD); John A & Jennie E O'Keefe, county judge (1907-1931 CD); Margerette M Johnston (1935-1941 CD)*; Jason J Gilbert (1947-1950 CD)*; Joshua J Gilbert (1952 CD); Vacant (1954-1959 CD); CO (1967)
4	623	N 11th	1909	C	James T & Matilda Aukland (1909 - 1941 CD); Allen A Ashworth (1957 CD)*; Eldon Chamberlin (1950-1956 CD); Rev. Ervin S Funk (1958-1959 CD)*
5	701	N 11th	1975	NC	-
6	719	N 11th	1970	NC	-
7	1015	Jefferson	1980	NC	-
8	803	N 11th	1890	C	W A & Grace Wolfe, Prs. German Nat'l + Dwight Coit (cashr. Ger. Nat. Bank) (1902-1904 CD); Ernest O & Emma L Kretsinger, atty at Law (1909-1917 CD); Mrs. Emma L Kretsinger, wid of E O (1929-1937 CD); Ernest L Kretsinger (son of E O) (1939-1952 CD); William Stickley (1954 CD); Coleman Nursing Home (1956 - 1959 CD)*
9	809	N 11th	1951	C	Harry F Doyle (1952-1956 CD); Marvin A Coleman (1958-1959 CD)
10	821	N 11th	1902	NC	E & Mary F Diehl (1902-1909 CD); Mary F Diehl (wid of E) (1911 CD); J H Steinmeyer (1917 CD); Charles L Brewster (1925-1959 CD);
11	823	N 11th	1902	C	W J & Maggie Mason (1902-1904 CD); N & Ella E Macken (1909 CD); Michael S & Annie Wolbach (1911-1917 CD); Mike Wolbach to Bernard E Drummond (1918) - 1931 CD; Mrs. Lena Drummond (1937- 1941 CD); Thomas Pohlman (1947-1952 CD); Mrs. Dee Pohlman (1954 CD); Marvin H Gross (1956-1959 CD) Lloyd G Oglesby (1958 CD)* Corban Keck (1959 CD)*
12	1016	Summit	1959	NC	-
13	1020	Summit	1959	C	-
14	903	N 11th	1902	C	W C & Martha E Hooker (1902-1910 Cen); W E Hooker (son of W C) + W C and Martha still in res. (1911 CD); John R McCann, postmaster (1917 CD); S B & Lucy Ayers, engr RR (1916-1920Cen); W R Bain (1925 CD); Herbert R Ruyle (1941 CD); Clifford O Trout (1947 CD); (Only Owners Listed)
15	909	N 11th	1917	C	Martin F Eickmann (1917-1931 CD); Oldham Hinesley (1937-1947CD)*; Orrin L Beeson (1952- 1958 CD); Mrs. Louise E Beeson (1959 CD)
16	915	N 11th	1917	C	Fred Wade (1917 CD); Arthur J Floyd, Piano Tuner (1925-1939*-1947 CD) Ownership; Mrs. Bessie L. Floyd (1950-1959); Raymond W Jensen (1954 CD)*

United States Department of the Interior
National Park ServiceNational Register of Historic Places
Continuation Sheet

North Eleventh Street Historic District

Name of Property

Gage County, Nebraska

County and State

Section 10 Page 4

Bldg ID #	House Number	Street	Year Built	Status	Previous Owner
17	917	N 11th	1917	C	Mrs. Martha Hooker (1917 CD); Herbert Lemon to Walter G. Walker (1920); Mrs. Bessie L Floyd (1950 CD); John G Sherer (1952 - 1956 CD)*; Ernest Jacks (1959 CD)
18	923	N 11th	1917	C	Roscoe & Frances Cook (1917 CD); F B Rullman to Abraham W Mast (1924-1931 CD); Mrs. Lydia Mast (1937-1939 CD); Jesse C Mast (1941 CD); Gerhard C Wiebe (1947 CD)* Gained ownership (1950 CD); Mrs. Katherine J Wiebe (1952-1959 CD)
19	920	N 11th	1888	C	S P & Agnes Lester (1890-1909 CD); Marion T & Alminda Cummings (1911 CD); M T Cummings Trades for Mr. Becker of Lincoln's Farm (1914); J H Steinmeyer sells to Mrs. Caroline A Janssen (1918-1950 CD); Mrs. Marguerite Bott (1952-CD)
20	910	N 11th	1925	C	Wm Potter, (Dodge Dealer)(1926); Clair C Hayden (1929 CD)*; Aug Sack (1931 CD)* ; Branson W Stewart (1937 CD)* Gains ownership (1939-1959 CD)
21	906	N 11th	1951	C	John O Carlson (1956-1959 CD)
22	900	N 11th	1952	C	Willard D Hall (1954 CD) Marven E Johnson (1954 CD)*; Lawrence C Salisbury (1956-1959 CD)
23	822	N 11th	1920	C	Mrs. Laura J Ellis (1925-1941 CD); John T Ellis (1947-1959 CD)
24	814-816	N 11th	1984	NC	-
25	810	N 11th	1924	C	C E Doyle (1925 CD); Warner F Smith (Warner F Smith Insurance Agency) (1929 - 1959 CD)
26	804	N 11th	1902	C	Jacob & Ella Shackleton (1902 CD); Wm E Clark, trav agt (1904 CD); John R & Grace E McCann (1909 CD); Geo A & Ida Culver (1911-1917 CD); Corwin M (son of Geo A) Culver traded his house for LS Daniels @ 1115 Court (1926); LS Daniel to Mary Evans (1928); John F Evans (1929) - 1956 CD; Wallace Peterson (1931 CD)*; Geo Figgins (1958 CD)*; John Evans (1959 CD)*
27	722	N 11th	1925	C	Carl Jaspersen (1924); Vernon E Christlieb (1929 CD); Charles A Beuthner (1931 - 1935 CD)* ; Vernon E Christlieb (1937-1941 CD); Faye H Sandritter (1947 CD)* Gained ownership (1950-1956 CD) Charles E Dedrick (1956 CD)*; Cecil M Hughes (1958-1959 CD)
28	714	N 11th	1917	C	Geo H & Josephina G Sullivan (1917 CD-1920Cen); Sullivan to K.B. Cary (1920); Alpha H Zehrung (1925 - 1931 CD); Wade W Traylor (1935 CD)* ; Dean E Walker (1937-1939 CD)*; Alberty C Gary (1941 CD)*; Mrs. Ferne F Haldiman (1947-1959 CD)
29	712	N 11th	1911	C	Geo C. & Jennie Pyle (1911-1917 CD); G C Pyle to Percy J Smethers (1917) - 1937 CD; Herbert P Jark (1939-1950 CD); Donald M Paulson (1952 CD)*; Frank Andreeson (1954-1959 CD);
30	710	N 11th	1910	C	Charles B & Vinnie Branson (1911 CD); Dr. Branson (1913); Dr. B G Hancock, dentist (1917 CD); Leon C Crittenden (1925-1929 CD); Vacant (1931 CD); Russell D McClure (1935-1941 CD); Marion H Bartholomew (contr) (1947-1959 CD)
31	702	N 11th	1910	C	John R & Grace McCann (1910Cen - 1937 CD); Walter C & Edith Magee (1917-1937 CD)*; Warren E Chamberlin (ins) (1939-1958 CD) Wolff Alwin (1956 CD)*; Jerry L Knickerbocker (1959 CD)

United States Department of the Interior
National Park ServiceNational Register of Historic Places
Continuation Sheet

North Eleventh Street Historic District

Name of Property

Gage County, Nebraska

County and State

Section 10 Page 5

Bldg ID #	House Number	Street	Year Built	Status	Previous Owner
32	622	N 11th	1902	C	R C and Iva Giddings + Joseph & Scott Hull (employees of R C Giddings & Co) (1902-1904 CD); Adolph & Mary Guenther (1909-1917 CD); Guenther House Damaged by fire is being remodeled by new owner W.W. Scott (1923); J T Aukland (1925 CD) and O C Scott (1925 CD); John G Krim (1929-1935 CD)*; Charles E Wilcox (1937 CD)*; Geo W Gore (1939 CD)*; Karl E Stolzenburg (1941 CD)*; Kenneth W Kyles (1947 CD); Masel Kyles (1950 CD); Merrick R Winter (1952-1959 CD)*;
33	616	N 11th	1928	C	Lewis C McEwen (1929-1959 CD); Harold A Lovell (1937 CD)*
34	612	N 11th	1909	C	Chas E & Eleanora Bates (1909 CD-1910 Cen); Archibald & Nina Schultz (1911 CD); JI & Lucy Wilson (1917 CD); C G Baird (1925 CD); Harold H Kirschner (1929-1937 CD)* Gained ownership (1939-1950 CD); Lester I Trussell (1952-1959 CD)
35	610	N 11th	1904	C	Joseph H Smith, cond UPRR (1904 CD); Mrs. Anna F Hemler, wid CM (1917 CD); Hugo W Ahlquist (1925 - 1929 CD); Orson W Beckwith (1931 CD)*; Maxwell A Anderson (1935 CD)*; Mrs. Mae Anderson (1937 CD)*; Charles E Dedrick (1939-1941 CD)*; Theodore S Heinecken (1947-1959 CD)
36	602	N 11th	1915	C	Peter Jansen to Joseph A Price (c1920 - 1935 CD); Mrs. Thirsa Price, Harry H Boyd (1937 CD)*; Theo R Brewin (1939-1941 CD)*; Clarence S (and He Hye) Warren (1947-1959 CD)

United States Department of the Interior
National Park Service

**National Register of Historic Places
Continuation Sheet**

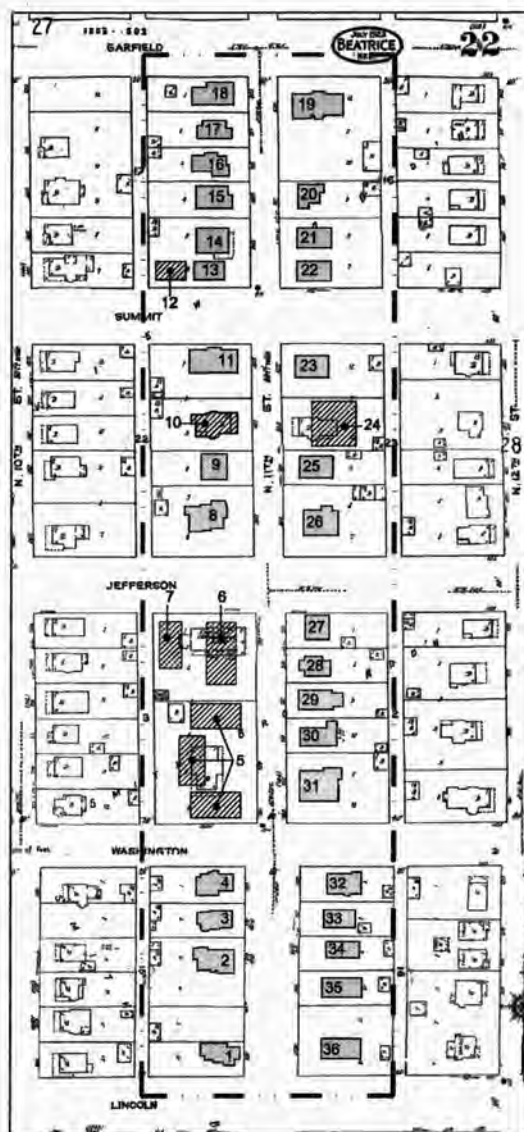
North Eleventh Street Historic District

Name of Property

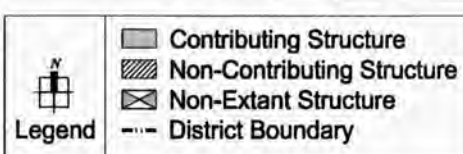
Gage County, Nebraska

County and State

Section 10 Page 6



**North 11th Street
Historic District
Beatrice, Nebraska**



National Register of Historic Places
Continuation Sheet

Name of Property

County and State

Section 10 Page 7


Beatrice Streetcar System

Beatrice Transit Railway

----- 1885

1886

----- 1889

 North Eleventh Street Historic District

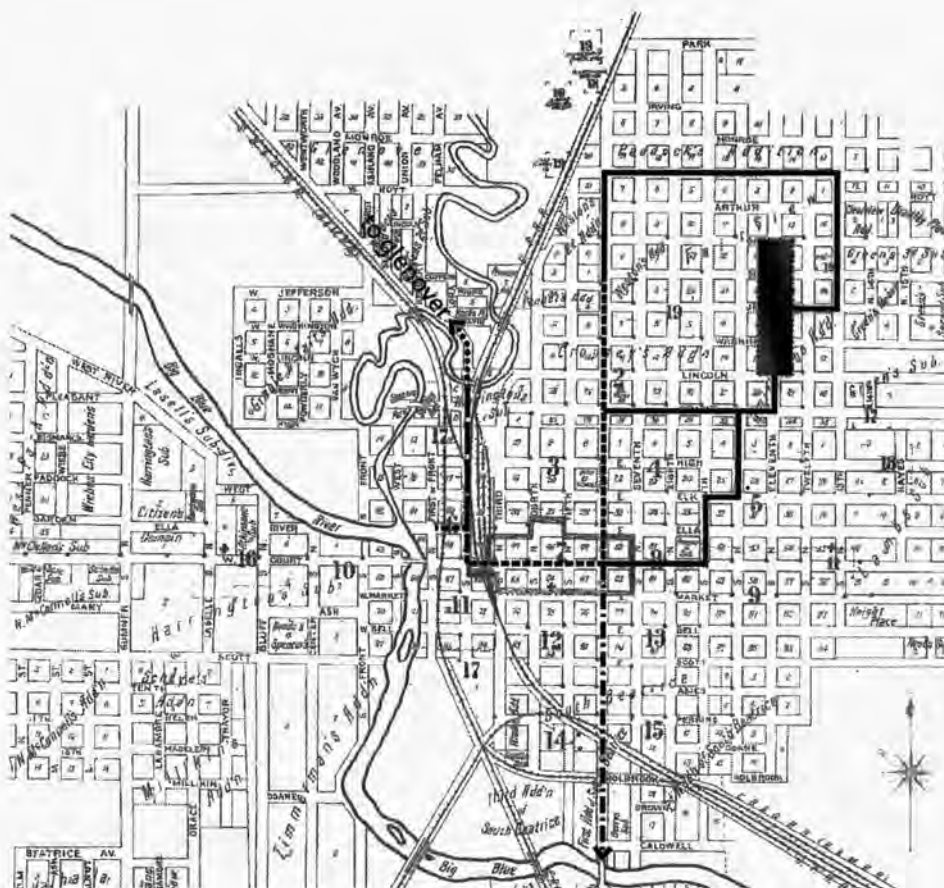
South Beatrice Street Railway

1889

(extended south to Chautauqua Park and through Brumback and Spencer's additions)

Glenover Street Railway

..... 1889



North Eleventh Street Historic District shown shaded. Map courtesy of Alley Poyner Macchietto Architecture; Omaha, Nebraska; August 2009.

United States Department of the Interior
National Park Service

**National Register of Historic Places
Continuation Sheet**

North Eleventh Street Historic District

Name of Property

Gage County, Nebraska

County and State

Section 10 Page 8

Bird's Eye View of Beatrice, 1874.

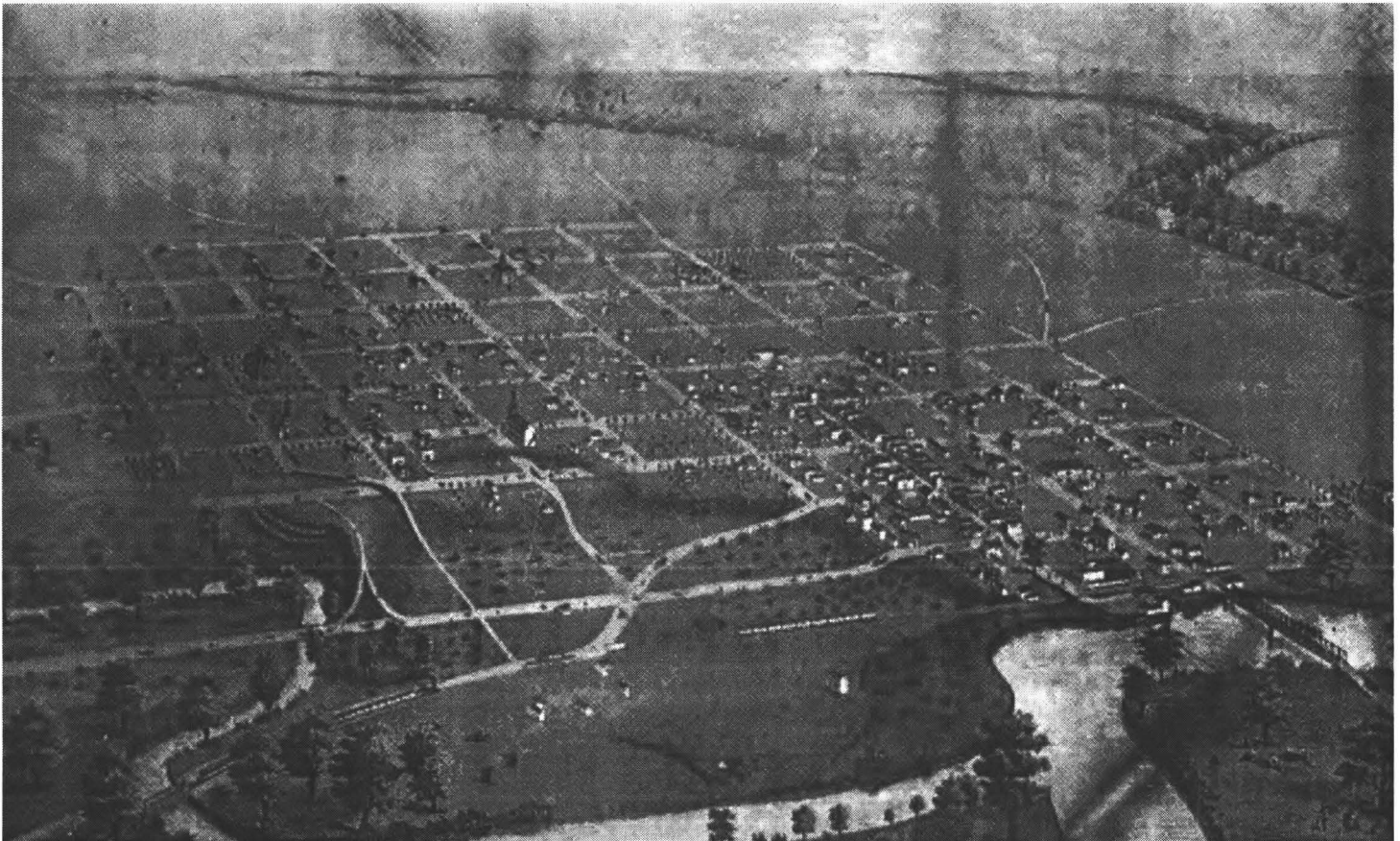


Image courtesy of Gage County Historical Society; Beatrice, Nebraska.

UNITED STATES DEPARTMENT OF THE INTERIOR
NATIONAL PARK SERVICE

NATIONAL REGISTER OF HISTORIC PLACES
EVALUATION/RETURN SHEET

REQUESTED ACTION: NOMINATION

PROPERTY North Eleventh Street Historic District
NAME:

MULTIPLE
NAME:

STATE & COUNTY: NEBRASKA, Gage

DATE RECEIVED: 1/29/10 DATE OF PENDING LIST: 2/19/10
DATE OF 16TH DAY: 3/06/10 DATE OF 45TH DAY: 3/15/10
DATE OF WEEKLY LIST:

REFERENCE NUMBER: 10000068

REASONS FOR REVIEW:

APPEAL: N DATA PROBLEM: N LANDSCAPE: N LESS THAN 50 YEARS: N
OTHER: N PDIL: N PERIOD: N PROGRAM UNAPPROVED: N
REQUEST: N SAMPLE: N SLR DRAFT: N NATIONAL: N

COMMENT WAIVER: N

☒ ACCEPT ☐ RETURN ☐ REJECT 3-10-10 DATE

ABSTRACT/SUMMARY COMMENTS:

Entered in
The National Register
of
Historic Places

RECOM./CRITERIA _____

REVIEWER _____ DISCIPLINE _____

TELEPHONE _____ DATE _____

DOCUMENTATION see attached comments Y/N see attached SLR Y/N

If a nomination is returned to the nominating authority, the nomination is no longer under consideration by the NPS.



PHOTO 1 OF 42, NORTH ELEVENTH STREET FROM GARFIELD, ASPECT: S, CHRISTINA
JANSEN, ADMA, 7/22/2009. NORTH ELEVENTH STREET HISTORIC DISTRICT, BEATRICE
GAGE COUNTY, NEBRASKA. NE. GAGE COUNTY - NORTH ELEVENTH STREET. 0001



PHOTO 2 of 42, NORTH ELEVENTH STREET FROM LINCOLN, ASPECT: NW, CHRISTINA
JANSEN. ARMA, 7/22/2009. NORTH ELEVENTH STREET HISTORIC DISTRICT, BEAT-
RICE, GAGE COUNTY, NEBRASKA. NE - GAGE COUNTY - NORTH ELEVENTH STREET
- 0002



PHOTO 3 of 42; NORTH ELEVENTH STREET FROM WASHINGTON, ASPECT: N,
CHRISTINA JANSEN, APMA, 7/22/2009. NORTH ELEVENTH STREET HISTORIC
DISTRICT, BEATRICE, GAGE COUNTY, NEBRASKA. NE- GAGE COUNTY-
NORTH ELEVENTH STREET_ 0003



PHOTO 4 of 42, NORTH ELEVENTH STREET FROM LINCOLN, ASPECT: NE, CHRISTINA JANSEN, APMA, 7/22/2009. NORTH ELEVENTH STREET HISTORIC DISTRICT, BEATRICE, GAGE COUNTY, NEBRASKA. NE-GAGE COUNTY- NORTH ELEVENTH STREET _0004



PHOTO 50F42, NORTH ELEVENTH STREET FROM WASHINGTON, ASPECT: NE, CHRISTINA
JANSEN, APMA, 7/22/2009. NORTH ELEVENTH STREET HISTORIC DISTRICT,
BEATRICE, GAGE COUNTY, NEBRASKA. NE- GAGE COUNTY- NORTH ELEVENTH
STREET- 0005



PHOTO 6 OF 42, NORTH ELEVENTH STREET FROM JEFFERSON, ASPECT: NW,
CHRISTINA JANSEN, APMA, 7/22/2009. NORTH ELEVENTH STREET HISTORIC
DISTRICT, BEATRICE, GAGE COUNTY, NEBRASKA. NE - GAGE COUNTY.
NORTH ELEVENTH STREET - 0006



PHOTO 7 of 42, BUILDING NO. 1, ASPECT: W, JENNIFER
HONEBRINK, APMA, 3/18/2009. NORTH ELEVENTH
STREET HISTORIC DISTRICT, BEATRICE, GAGE COUNTY, NEB
PASKA. NE. ~~NORTH~~ GAGE COUNTY - NORTH ELEVENTH
STREET - 0007



PHOTO 8 OF 42, BUILDING NO. 2, ASPECT: SE, JENNIFER
HONEBRINK, APMA, 3/18/2009. NORTH ELEVENTH STREET
HISTORIC DISTRICT, BEATRICE, GAGE COUNTY, NEBRASKA.
NE - GAGE COUNTY - NORTH ELEVENTH STREET - 0008



PHOTO 9 of 42, BUILDING NO. 3, ASPECT: SW. JENNIFER
HONEBRINK, APMA, 3/18/2009. NORTH ELEVENTH
STREET HISTORIC DISTRICT, BEATRICE, GAGE COUNTY,
NEBRASKA. NE- GAGE COUNTY- NORTH ELEVENTH
STREET- 0009



PHOTO 10 of 42, BUILDING NO. 4, ASPECT: SE, JENNIFER HONEBRINK
APMA, 3/18/2009. NORTH ELEVENTH STREET HISTORIC DISTRICT,
BEATRICE, GAGE COUNTY, NEBRASKA. NE - GAGE COUNTY -
NORTH ELEVENTH STREET_0010



PHOTO 11 OF 42, BUILDING NO. 5, ASPECT: SW, JENNIFER HONE
BRINK, APMA, 3/18/2009. NORTH ELEVENTH STREET HIST-
ORIC DISTRICT, BEATRICE, GAGE COUNTY, NEBRASKA.
NE - GAGE COUNTY - NORTH ELEVENTH STREET - 00 11



PHOTO 12 OF 42, BUILDING NO. 6, ASPECT: SW, JENNIFER HONE
BRINK, APMA, 3/18/2009. NORTH ELEVENTH STREET HIST-
ORIC DISTRICT, BEATRICE, GAGE COUNTY, NEBRASKA.
NE - GAGE COUNTY - NORTH ELEVENTH STREET - 00 12



PHOTO 13 OF 42, BUILDING NO. 7, ASPECT: SW, JENNIFER
HONEBRINK, APMA, 3/18/2009. NORTH ELEVENTH
STREET HISTORIC DISTRICT, BEATRICE, GAGE COUNTY,
NEBRASKA, NE - GAGE COUNTY - NORTH ELEVENTH
STREET - 0013



PHOTO 14 OF 42, BUILDING NO. 8, ASPECT: NW, JENNIFER
HONEBRINK, APMA, 3/18/2009. NORTH ELEVENTH
STREET HISTORIC DISTRICT, BEATRICE, GAGE COUNTY,
NEBRASKA. NE- GAGECOUNTY- NORTHELEVENTH
STREET- 0014



PHOTO 15 OF 42, BUILDING NO. 9, ASPECT: W, JENNIFER
HONEBRINK, APMA, 31/18/2009. NORTH ELEVENTH STREET
HISTORIC DISTRICT, BEATRICE, GAGE COUNTY, NEBRASKA.
NE, - GAGE COUNTY - NORTH ELEVENTH STREET - 0015



821

821.1973

821.1973

PHOTO 16 OF 42, BUILDING NO. 10, ASPECT: W, JENNIFER
HONEBRINK, APMA, 3/18/2009. NORTH ELEVENTH
STREET HISTORIC DISTRICT, BEATRICE, GAGE COUNTY,
NEBRASKA. NE - GAGE COUNTY - NORTH ELEVENTH
STREET - 0016



PHOTO 17 OF 42, BUILDING NO. 11, ASPECT: SW, JENNIFER
HONEYBRINK, APMA, 3/18/2009. NORTH ELEVENTH STREET
HISTORIC DISTRICT, BERTICE, GAGE COUNTY, NEBRASKA.
NE - GAGE COUNTY - NORTH ELEVENTH STREET - 0017



PHOTO 18 OF 42, BUILDING NO. 12, ASPECT: NW, JENNIFER
HONEBRINK, APMA, 3/18/2009. NORTH ELEVENTH
STREET HISTORIC DISTRICT, BEATRICE, GAGE COUNTY,
NEBRASKA. NE_GAGE COUNTY_ NORTH ELEVENTH
STREET_ 0018



PHOTO 19 OF 42, BUILDING NO. 13, ASPECT: NW, JENNIFER
HONEBRINK, APMA, 3/18/2009. NORTH ELEVENTH
STREET HISTORIC DISTRICT, BEATRICE, GAGE COUNTY,
NEBRASKA. NE- GAGE COUNTY- NORTH ELEVENTH
STREET - 0019



PHOTO 20 OF 42, BUILDING NO. 14, ASPECT: W, UENNIER
HONEBRINK, APMA, 3/18/2009. NORTH ELEVENTH
STREET HISTORIC DISTRICT, BEATRICE, GAGE COUNTY,
NEBRASKA. NE - GAGE COUNTY - NORTH ELEVENTH
STREET - 0020



PHOTO 21 OF 42, BUILDING NO. 15, ASPECT: W, JENNIFER
HONEBRINK, APMA, 3/18/2009. NORTH ELEVENTH
STREET HISTORIC DISTRICT, BEATRICE, GAGE COUNTY,
NEBRASKA. NE_ GAGE COUNTY_ NORTH ELEVENTH
STREET_ 0021



PHOTO 22 OF 42, BUILDING NO. 16, ASPECT: SW, JENNIFER
HONEBRINK, APMA, 3/18/2009. NORTH ELEVENTH
STREET HISTORIC DISTRICT, BEATRICE, GAGE COUNTY,
NEBRASKA. NE - GAGE COUNTY - NORTH ELEVENTH
STREET - 0022



PHOTO 23 OF 42, BUILDING NO. 17, ASPECT: SW, JENNIFER
HONEBRINK, APMA, 3/18/2009. NORTH ELEVENTH
STREET HISTORIC DISTRICT, BEATRICE, GAGE COUNTY,
NEBRASKA. NE- GAGE COUNTY - NORTH ELEVENTH
STREET_ 0023



PHOTO 24 OF 42, BUILDING NO. 18, ASPECT: W, JENNIFER
HONEBRINK, APMA, 3/18/2009. NORTH ELEVENTH
STREET HISTORIC DISTRICT, BEATRICE, GAGE COUN-
TY, NEBRASKA. NE- GAGE COUNTY. NORTH ELEVE
NTH STREET- 0024



PHOTO 250F 42, BUILDING NO. 19, ASPECT: E, JENNIFER
HONEBRINK, APMA, 3/18/2009. NORTH ELEVENTH
STREET HISTORIC DISTRICT, BEATRICE, GAGE COUNTY,
NEBRASKA. NE-GAGE COUNTY- NORTH ELEVENTH
STREET_0025



PHOTO 26 OF 42, BUILDING NO. 20, ASPECT: SE, JENNI
FER HONEBRINK, APMA, 3/18/2009. NORTH ELEVENTH
STREET HISTORIC DISTRICT, BEATRICE, GAGE COUNTY,
NEBRASKA. NE- GAGE COUNTY- NORTH ELEVENTH
STREET- 0026



PHOTO 27 OF 42, BUILDING NO. 21, ASPECT: E, JENNIFER
HONEBRINK, ADMA, 3/18/2009. NORTH ELEVENTH
STREET HISTORIC DISTRICT, BEATRICE. GAGE COUNTY,
NEBRASKA. NE- GAGE COUNTY- NORTH ELEVENTH
STREET_ 0027



H
E
S
S
B
A
C
H

PHOTO 28 OF 42, BUILDING NO. 22, ASPECT: E, JENNIFER HONEBRINK, APMA, 3/18/2009. NORTH ELEVENTH STREET HISTORIC DISTRICT, BEATRICE, GAGE COUNTY, NEBRASKA. NE- GAGECOUNTY- NORTH ELEVENTH STREET - 00 28



PHOTO 29 of 42, BUILDING NO. 23, ASPECT: E, JENNIFER
HONEBRINK, APMA, 3/18/2009. NORTH ELEVENTH
STREET HISTORIC DISTRICT, BEATRICE, GAGE COUNTY,
NEBRASKA. NE- GAGE COUNTY- NORTH ELEVENTH
STREET - 0029



PHOTO 30 OF 42, BUILDING NO. 24, ASPECT: E, JENNIFER
HONEBRINK, APMA, 3/18/2009. NORTH ELEVENTH
STREET HISTORIC DISTRICT, BEATRICE, GAGE COUNTY,
NEBRASKA, ~~ADP~~ NE - GAGE COUNTY. NORTH ELEV
ENTH STREET - 0030



PHOTO 31 OF 42, BUILDING NO. 25, ASPECT: E, JENNIFER
HONEBRINK, APMA, 3/18/2009. NORTH ELEVENTH
STREET HISTORIC DISTRICT, BEATRICE, GAGE COUNTY,
NEBRASKA, NE_ GAGE COUNTY_ NORTH ELEVENTH
STREET_ 0031



PHOTO 32 OF 42, BUILDING NO. 26, ASPECT: E, JENNIFER HONE
BRINK, APMA, 3/18/2009. NORTH ELEVENTH STREET HISTORIC
DISTRICT, BEATRICE, GAGE COUNTY, NEBRASKA. NE- GAGE
COUNTY - NORTH ELEVENTH STREET - 0032



PHOTO 33 OF 42, BUILDING NO. 27, ASPECT: SE, JENNIFER
HONE BRINK, APMA, 3/18/2009. NORTH ELEVENTH STREET
HISTORIC DISTRICT, BEATRICE, GAGE COUNTY, NEBRASKA.
NE- GAGE COUNTY - NORTH ELEVENTH STREET -
0033



PHOTO 340F42, BUILDING NO. 28, ASPECT: E, JENNIFER
HONERBRINK, APMA, 3/18/2009. NORTH ELEVENTH
STREET HISTORIC DISTRICT, BEATRICE, GAGE COUNTY,
NEBRASKA. NE GAGE COUNTY- NORTH ELEVENTH
STREET- 0034



PHOTO 350F42, BUILDING NO. 29, ASPECT: E, JENNIFER HONE-
BRINK, APMA, 3/18/2009. NORTH ELEVENTH STREET HIST-
ORIC DISTRICT, BEATRICE, GAGE COUNTY, NEBRASKA.
NE GAGE COUNTY - NORTH ELEVENTH STREET - 0035



710

PHOTO 36 OF 42, BUILDING NO. 36, ASPECT: E, JENNIFER
HONEBRINK, APMA, 3/18/2009. NORTH ELEVENTH
STREET HISTORIC DISTRICT, BEATRICE, GAGE COUNTY,
NEBRASKA. NE- GAGE COUNTY- NORTH ELEVENTH
STREET- 00 36



PHOTO 37 OF 42, BUILDING NO. 31, ASPECT: E, JENNIFER
HONEBRINK, APMA, 3/18/2009. NORTH ELEVENTH
STREET HISTORIC DISTRICT, BEATRICE, GAGE COUNTY,
NEBRASKA. NE- GAGE COUNTY- NORTH ELEVENTH
STREET- 00 37



PHOTO 38 OF 42, BUILDING NO. 32, ASPECT: SE, JENNIFER
HONEBRINK, ADMA, 3/18/2009. NORTH ELEVENTH STREET
HISTORIC DISTRICT, BEATRICE, GAGE COUNTY, NEBRASKA
NE_ GAGE COUNTY_ NORTH ELEVENTH STREET_ 0038



PHOTO 34 OF 42, BUILDING NO. 33, ASPECT: SE, JENNIFER
HONEBRINK, APMA, 3/18/2009. NORTH ELEVENTH STREET
HISTORIC DISTRICT, BEATRICE, GAGE COUNTY, NEBRASKA.
NE- GAGE COUNTY- NORTH ELEVENTH STREET- 0039



PHOTO 40 OF 42, BUILDING NO. 34, ASPECT: E, JENNIFER HONE
BRINK, APMA, 3/18/2009. NORTH ELEVENTH STREET HISTORIC
DISTRICT, BEATRICE, GAGE COUNTY, NEBRASKA. NE - GAGE
COUNTY - NORTH ELEVENTH STREET - 0040



610

610

PHOTO 41 OF 42, BUILDING NO. 35, ASPECT: E, JENNIFER HONE
BRINK, APMA, 3/18/2009. NORTH ELEVENTH STREET HIST-
ORIC DISTRICT, BEATRICE, GAGE COUNTY, NEBRASKA.
NE- GAGE COUNTY- NORTH ELEVENTH STREET- 0041



Six O Two

PHOTO 42 OF 42; BUILDING NO. 36, ASPECT: E, JENNIFER HONE
BRINK, APMA, 3/18/2009. NORTH ELEVENTH STREET HISTORIC
DISTRICT, BEATRICE, GAGE COUNTY, NEBRASKA. NE- GAGE
COUNTY- NORTH ELEVENTH STREET- 0042



UTM GRID AND 1980 MAGNETIC NORTH DECLINATION AT CENTER OF SHEET



BEATRICE EAST, NEBR.
N 4015—W 9637.5/7.5
1957
PHOTOREVISED 1980
DMA 6664 I SW—SERIES V875

THIS MAP COMPLIES WITH NATIONAL MAP ACCURACY STANDARDS
FOR SALE BY U.S. GEOLOGICAL SURVEY, DENVER, COLORADO 80225, OR RESTON, VIRGINIA 22092
A FOLDER DESCRIBING TOPOGRAPHIC MAPS AND SYMBOLS IS AVAILABLE ON REQUEST



STATE HISTORICAL SOCIETY

January 21, 2010

J. Paul Loether
National Register—National Historic Landmarks Programs
National Park Service
1201 "I" Street NW, 8th Floor
Washington, DC 20005



RE: North Eleventh Street Historic District
Beatrice, Gage County, Nebraska

Dear Mr. Loether:

Please find enclosed the National Register of Historic Places nomination form for the above resource. This form has met all notification and other requirements as established in 36 CFR 60.

If you have any questions concerning this nomination, please let me know.

Sincerely,

A handwritten signature in dark ink, appearing to read "L. Robert Puschendorf".

L. Robert Puschendorf
Deputy State Historic Preservation Officer

Enclosure

1500 R Street
PO Box 82554
Lincoln, NE 68501-2554
p: (800) 833-6747
(402) 471-3270
f: (402) 471-3100
www.nebraskahistory.org