



GURLEY ST. GRILL

FRESH PASTA · YOGURT DESSERTS · APPETIZERS · BANQUETS

GURLEY ST. GRILL

NEIGHBORHOOD BAR & GRILL · PATIO · LATE NITE

OPEN DAILY at 11

Graphic Center

1281

1.

1. Mulvenon Building
2. Yavapai County, Arizona
3. William Otwell
4. May, 1992
5. Otwell Associates
121 E. Goodwin St. Prescott, AZ
6. View looking north, northwest.

GURLEY ST. GRILL

230
W. GURLEY

OPEN
DAILY
at 11

Grill

NEIC

St. Grill

BEER DRAFT
PILSENER
LAGER
ALE
STOUT
IPA
SOUR
BREWERY

P-200 5000

ARGON

111

2.

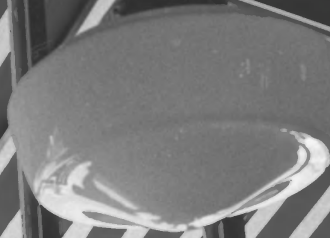
1. Mulvenon Building
2. Yavapai County, Arizona
3. William Otwell
4. May, 1992
5. Otwell Associates
121 E. Goodwin St. Prescott, AZ
6. View of central arch,
looking north



3.

1. Mulvenon Building
2. Yavapai County, Arizona
3. William Otwell
4. May, 1992
5. Otwell Associates
121 E. Goodwin St. Prescott,
AZ
6. View looking southwest.

Surley St. Grill
FRESH PASTA
\$1.99
FRESH SAUCE
MARRINARA
SARSA
LESSO PIZZA



4.

1. Mulvenon Building
2. Yavapai County, Arizona
3. William Otwell
4. May, 1992
5. Otwell Associates
121 E. Goodwin St., Prescott, AZ.
6. Interior view of west storefront,
looking southwest.



5.

1. Mulvenon Building
2. Yavapai County, Arizona
3. William Otwell
4. May, 1992
5. Otwell Associates
121 E. Goodwin St., Prescott, AZ
6. Interior view looking up-
stairs.



6.

1. Mulvenon Building
2. Yavapai County, Arizona
3. William Otwell
4. May, 1992
5. Otwell Associates
121 E. Goodwin St., Prescott, AZ.
6. Interior view of upstairs lobby,
looking south.



7.

1. Mulvenon Building
2. Yavapai County, Arizona
3. William Otwell
4. May, 1992
5. Otwell Associates
121 E. Goodwin St., Prescott, AZ
6. Interior view of upstairs lobby,
looking southwest.



1. Mulvenon Building
2. Yavapai County, Arizona
3. Paul R. Murphy
4. November 1991
5. AZ SHPO
6. North
7. 1



100 B. BOND
MURPHY'S
ESTABLISHED 1872
Serving Prescott's Finest
ONE BLOCK 201 N. Cortez

1. Mulvenon Building
2. Yavapai, County, Arizona
3. Paul R. Murphy
4. November 1991
5. AZ SHPO
6. East
7. 2



1. Mulvrenon Building
2. Yavapai County, Arizona
3. Paul R. Murphy
4. November 1991
5. AZ SHPO
6. Southeast
7. 3



1. Mulvenon Building
2. Yavapai County, Arizona
3. Paul R. Murphy
4. November 1991
5. AZ SHPD
6. Southeast
7. 4