

1057

United States Department of the Interior
National Park Service

NATIONAL REGISTER OF HISTORIC PLACES
REGISTRATION FORM

This form is for use in nominating or requesting determinations for individual properties and districts. See instructions in How to Complete the National Register of Historic Places Registration Form (National Register Bulletin 16A). Complete each item by marking "x" in the appropriate box or by entering the information requested. If any item does not apply to the property being documented, enter "N/A" for "not applicable." For functions, architectural classification, materials, and areas of significance, enter only categories and subcategories from the instructions. Place additional entries and narrative items on continuation sheets (NPS Form 10-900a). Use a typewriter, word processor, or computer, to complete all items.

1. Name of Property

historic name S.H. Kress & Company Building

other names/site number N/A

2. Location

street & number 475 Central Avenue

N/A not for publication

city or town St. Petersburg

N/A vicinity

state Florida code FL county Pinellas code 091 zip code 33701

3. State/Federal Agency Certification

103

As the designated authority under the National Historic Preservation Act, as amended, I hereby certify that this nomination request for determination of eligibility meets the documentation standards for registering properties in the National Register of Historic Places and meets the procedural and professional requirements set forth in 36 CFR Part 60. In my opinion, the property meets does not meet the National Register criteria. I recommend that this property be considered significant nationally statewide locally. (See continuation sheet for additional comments.)

James Snyder Matthews 8/10/2001
Signature of certifying official/Title Date

Florida State Historic Preservation Officer, Division of Historical Resources
State or Federal agency and bureau

In my opinion, the property meets does not meet the National Register criteria. (See continuation sheet for additional comments.)

Signature of certifying official/Title Date

State or Federal agency and bureau

4. National Park Service Certification

I hereby certify that the property is:

- entered in the National Register
 See continuation sheet
- determined eligible for the National Register
 See continuation sheet.
- determined not eligible for the National Register
 See continuation sheet.
- removed from the National Register.
- other, (explain) _____

Signature of the Keeper

Date of Action

Entered in the
National Register

10/1/01

5. Classification

Ownership of Property
(Check as many boxes as apply)

- private
- public-local
- public-State
- public-Federal

Category of Property
(Check only one box)

- buildings
- district
- site
- structure
- object

Number of Resources within Property
(Do not include any previously listed resources in the count)

Contributing	Noncontributing	
1	0	buildings
0	0	sites
0	0	structures
0	0	objects
1	0	total

Name of related multiple property listings
(Enter "N/A" if property is not part of a multiple property listing.)

N/A

Number of contributing resources previously listed in the National Register

0

6. Function or Use

Historic Functions
(Enter categories from instructions)

Commerce/Trade: Department Store

Current Functions
(Enter categories from instructions)

Commerce/Trade: Office and Retail Space

7. Description

Architectural Classification
(Enter categories from instructions)

Late 19th and 20th Century Revivals: Beaux Arts Classicism

Materials
(Enter categories from instructions)

foundation Stone: Marble

walls Terra Cotta

roof Tar and Gravel

other Metal: Aluminum

Narrative Description

(Describe the historic and current condition of the property on one or more continuation sheets.)

8. Statement of Significance

Applicable National Register Criteria

(Mark "x" in one or more boxes for the criteria qualifying the property for National Register listing.)

- A** Property is associated with events that have made a significant contribution to the broad patterns of our history.
- B** Property is associated with the lives of persons significant in our past.
- C** Property embodies the distinctive characteristics of a type, period, or method of construction or represents the work of a master, or possesses high artistic values, or represents a significant and distinguishable entity whose components lack individual distinction.
- D** Property has yielded, or is likely to yield information important in prehistory or history.

Criteria Considerations

(Mark "x" in all the boxes that apply.)

Property is:

- A** owned by a religious institution or used for religious purposes.
- B** removed from its original location.
- C** a birthplace or grave.
- D** a cemetery.
- E** a reconstructed building, object, or structure.
- F** a commemorative property.
- G** less than 50 years of age or achieved significance within the past 50 years

Narrative Statement of Significance

(Explain the significance of the property on one or more continuation sheets.)

9. Major Bibliographical References

Bibliography

Cite the books, articles, and other sources used in preparing this form on one or more continuation sheets.)

Previous documentation on file (NPS):

- preliminary determination of individual listing (36 CFR 36) has been requested
- previously listed in the National Register
- previously determined eligible by the National Register
- designated a National Historic Landmark
- recorded by Historic American Buildings Survey # _____
- recorded by Historic American Engineering Record

Areas of Significance

(Enter categories from instructions)

- Architecture
- Commerce
- _____
- _____
- _____
- _____

Period of Significance

1927-1947

Significant Dates

N/A

Significant Person

N/A

Cultural Affiliation

Architect/Builder

Architect: Hoffmann, E.J.T.
Builder: Miller, G.A.

Primary location of additional data:

- State Historic Preservation Office
- Other State Agency
- Federal agency
- Local government
- University
- Other

Name of Repository

10. Geographical Data

Acreeage of Property Less than one acre

UTM References

(Place additional references on a continuation sheet.)

1	1 7	3 3 8 3 8 0	3 0 7 2 7 4 0
	Zone	Easting	Northing
2			

3			
	Zone	Easting	Northing
4			

See continuation sheet

Verbal Boundary Description

(Describe the boundaries of the property on a continuation sheet.)

Boundary Justification

(Explain why the boundaries were selected on a continuation sheet.)

11. Form Prepared By

name/title Penelope T. Bryan and Karen M. Dimon; Michael F. Zimny/Historic Preservation Planner

organization Bureau of Historic Preservation date July, 2001

street & number R.A. Gray Building, 500 South Bronough Street telephone (850) 245-6333

city or town Tallahassee state Florida zip code 32399-0250

Additional Documentation

Submit the following items with the completed form:

Continuation Sheets

Maps

A USGS map (7.5 or 15 minute series) indicating the property's location.

A Sketch map for historic districts and properties having large acreage or numerous resources.

Photographs

Representative black and white photographs of the property.

Additional items

(check with the SHPO or FPO for any additional items)

Property Owner

(Complete this item at the request of SHPO or FPO.)

name Kress Building, Inc.

street & number 535 Central Avenue telephone (727) 823-4191

city or town St. Petersburg state Florida zip code 33701

Paperwork Reduction Act Statement: This information is being collected for applications to the National Register of Historic Places to nominate properties for listing or determine eligibility for listing, to list properties, and amend listings. Response to this request is required to obtain a benefit in accordance with the National Historic Preservation Act, as amended (16 U.S.C. 470 et seq.).

Estimated Burden Statement: Public reporting burden for this form is estimated to average 18.1 hours per response including time for reviewing instructions, gathering and maintaining data, and completing and reviewing the form. Direct comments regarding this burden estimate or any aspect of this form to the Chief, Administrative Services Division, National Park Service, P.O. Box 37127, Washington, DC 20013-7127; and the Office of Management and Budget, Paperwork Reductions Projects (1024-0018), Washington, DC 20503.

**United States Department of the Interior
National Park Service**

**NATIONAL REGISTER OF HISTORIC PLACES
CONTINUATION SHEET**

Section number 7 Page 1

S.H. KRESS & COMPANY BUILDING
PINELLAS COUNTY, FLORIDA
DESCRIPTION

SUMMARY OF DESCRIPTION

The Kress Building is located at 475 Central Avenue, in the central business district of St. Petersburg, Florida. The building was constructed in 1927 by local building contractor G.A. Miller according to plans prepared by the architectural division of S.H. Kress and Company. The rectangular, flat-roofed building has five floor levels (including a mezzanine) plus a basement which extends beyond the property line underneath the sidewalk. It is of steel frame construction veneered with brick, terra cotta and decorative marble. The building's decorative ornamentation reflects the influence of the Beaux Arts style. The interior has been extensively altered from its original use; however, it is in the process of being restored to an appearance more consistent with its historic function. The exterior of the building is little changed and retains its overall integrity of location, design and setting.

SETTING

The Kress Building occupies lots 11 and 12 of Block 27 of the Revised Map of St. Petersburg, on the northeast corner of the intersection of Central Avenue and Fifth Street North. The building's main entry is located on Central Avenue, with a second entry located on Fifth Street North. It is abutted on the east by a two-story non-historic building (photo #1), and on the north by a 20-foot utility alley. Directly to the north of the alley is a 35-space parking lot, owned by the Christ United Methodist Church, which is located directly across First Avenue North (photo #2). Central Avenue is the main street of downtown St. Petersburg today, as it was in 1927. It is lined with a mix of multi-story office buildings, retail shops and restaurants. The Kress Building is located in the heart of this area. The building is in good condition and is one of a number of buildings which are being, or recently have been, restored or renovated as part of the revitalization of the downtown St. Petersburg area.

EXTERIOR

The Kress Building appears today much as it did when it opened for business in 1927 as the Kress Five and Dime Store. The building is of masonry construction with a spread footing foundation. The first floor is fairly simple in design. The main entrance on the south elevation consists of two large glass doors flanked by terra cotta piers and a bank of tall windows. Multi-light transom windows sit above the windows, as well as above the entry doors. There is a border of aluminum panels separating the transom windows from the ground floor windows. Just below the ground floor windows, running the length of the south and west elevations, are marble panels.

The building's principal elevations are its south and west facades (photo #3). Here, the first story and mezzanine level (the presence of which is not reflected on the exterior) are separated from the upper stories by a decorative string course. The lower portion of the string course is detailed by an acanthus leaf pattern (photo #4). The building's upper three stories are veneered in parchment-colored terra cotta with decorative

**United States Department of the Interior
National Park Service**

**NATIONAL REGISTER OF HISTORIC PLACES
CONTINUATION SHEET**

Section number 7 Page 2 S.H. KRESS & COMPANY BUILDING
PINELLAS COUNTY, FLORIDA
DESCRIPTION

ornamentation reflecting the influence of the Beaux Arts style. These stories are divided into five bays by vertical elements (photo #5). Windows are double hung sash, one over one. Decorative recessed panels appear between the second, third, and fourth floors (photo #6). Above the fourth floor is a classically dentiled cornice with an egg and dart molding in the Beaux Arts style (photo #7). A parapet wall above, topped by decorative urns and scroll brackets, also displays influence of the Beaux Arts style. The name "KRESS" appears in the center of the parapet on the building's south and west elevations (photo #8).

The building's west elevation is similar to the south facade but contains a smaller entrance at the north end of the building (photo #9). The upper three floors are divided into eight bays by vertical elements similar to those found on the south facade. The building's north elevation is a blank red brick wall with a sign at the parapet in white lettering reading "5 - 10 - 25 CENTS STORE" (photo #10). Twelve double hung windows pierce this elevation (photo #11). The roofline here steps down in two locations from west to east as a parapet wall. The east elevation of the building also consists of a blank brick wall which it shares with an adjacent building to the east (photo #12).

INTERIOR

The main entrance of the building leads into a lobby which opens into an open space with a mezzanine level and a stairwell leading to the basement (photo #13). The basement extends beyond the property line and underneath the sidewalk, a feature common among structures built in the 1920s. The mezzanine extends out over the lobby with full size windows in offices overlooking this space. There is a brass handrail in both the mezzanine and the stairwell from the lobby area into the basement (photo #14). Two elevator doors display a graceful floral-like pattern (photo #15). Ceilings are at varying heights throughout the building.

ALTERATIONS

During the 1983 renovation of the building, operational multi-light transom windows, which paneling had covered some time before were replaced with new non-operational multi-light transoms. A vertical "KRESS" sign, which was previously attached on brackets to the front of the south facade of the building, was also removed. On the interior most ceilings have been dropped and contemporary finishes and walls obscure original materials and spaces (photos #16-18). The original wood floors throughout the building's upper three floors, however, have been restored to their original appearance (photos #19-21).

**United States Department of the Interior
National Park Service**

**NATIONAL REGISTER OF HISTORIC PLACES
CONTINUATION SHEET**

Section number 8 Page 1 S.H. KRESS & COMPANY BUILDING
PINELLAS COUNTY, FLORIDA
SIGNIFICANCE

SUMMARY OF SIGNIFICANCE

The St. Petersburg Kress Building fulfills Criteria A and C for listing in the National Register of Historic Places in the areas of architecture and commerce at the local level. The building is architecturally significant as an example of Beaux Arts-influenced design. The building's commercial significance is based on its association with real estate development in St. Petersburg during the 1920s boom era and on its prominent role for many years as a major anchor of the downtown business district. It also stands as a tribute to the great businessman and philanthropist Samuel H. Kress, whose passion for quality led him to create distinctive and sometimes unusual buildings from which to operate his nationwide business.

HISTORIC CONTEXT

Because of inadequate transportation, the settlement of St. Petersburg was slow until the coming of the railroad in 1888. The men chiefly responsible for constructing the railroad and laying the foundations of the city of St. Petersburg were John Constantine Williams from Detroit and Peter Demens, a Russian immigrant who named the settlement after the city of his homeland. Williams owned considerable acreage on the lower Pinellas County peninsula on which he was determined to develop a city, and Demens was instrumental in organizing the Orange Belt Railroad Company, which would provide transportation to the settlement. The railroad company, however, incurred enormous debts in constructing the line, and in 1895, it was sold to Henry Bradley Plant and renamed the Sanford and St. Petersburg Railroad. Growth quickly followed the coming of the railroad, and new towns were established on the Pinellas peninsula. Tarpon Springs, Palm Harbor, Ozana, Dunedin, Clearwater, Largo, Safety Harbor and St. Petersburg were among the more significant of the new and expanding communities. The development of St. Petersburg was concentrated near the waterfront on Tampa Bay. The community reached a population of about 3,000 by the beginning of the 20th century and was officially incorporated as a city in 1903.

Following World War I, St. Petersburg and the rest of Florida experienced a dynamic period of economic growth and population expansion known as the Florida Land Boom. This was a time when the country as a whole enjoyed material prosperity and had the time and the means for travel. During the war, the nation's keen interest in Florida made businessmen and developers aware of opportunities for easy fortunes through land speculation. Promotional literature from that era advertised Florida as a "tropical paradise." The increasing popularity and availability of the automobile also drew tourists to the area in numbers never before seen by the state.

The 1920s saw the development of a statewide system of public highways and roads, managed by the state road department. From less than 748 miles of state roads completed or underway in 1920, the system grew to 3,254 miles by 1930. Such development facilitated travel and promoted a land boom throughout the state, starting in Miami and Coral Gables in 1925, and followed by Palm Beach, Boca Raton, Tampa and St. Petersburg.

United States Department of the Interior
National Park Service

**NATIONAL REGISTER OF HISTORIC PLACES
CONTINUATION SHEET**

Section number 8 Page 2 S.H. KRESS & COMPANY BUILDING
PINELLAS COUNTY, FLORIDA
SIGNIFICANCE

Florida's population rose from just under one million people in 1920 to 1,263,540 in 1925 and to 1,468,211, by 1930.

But such expansion was not to last. In 1925, about the same time that the land buying fever had reached its height, the boom began to decline. Two devastating hurricanes brought Florida into the Great Depression ahead of the rest of the country, as did the failure of local governments to realize the folly of financing rapid growth with public bonds that could not be supported by the existing system of taxation. Too many speculative real estate projects outpaced the demand for occupancy, and the assessed value of real estate in Florida dropped from \$623,000,000 to \$441,000,000 between 1926 and 1930.

HISTORIC SIGNIFICANCE

The five and dime store, conceived by F.W. Woolworth in 1879, was a concept that took hold of the American collective interest like no other retailing enterprise before it.¹ The Woolworth chain was soon joined by J.G. McCrory's, S.S. Kresge's and S.H. Kress & Co. The five and dimes, such as Kress, were focal points of much social activity. People looked forward to going downtown to shop in these stores, meet with friends, and share a meal at the lunch counters which many of the stores featured. These stores, like the Kress Building in St. Petersburg, were constructed on the main streets of towns from coast to coast, where they drew large numbers of people to the downtown area to shop.² Each store was named for its founder, with the name of the company spelled out in gilt letters on long red signs across the facades of the buildings.³ Kress store opened its first five and dime store in downtown Memphis, Tennessee, in 1896. Over the next four years, Kress opened ten more stores.⁴

The St. Petersburg Kress store was constructed in 1927, during the declining years of the Florida Land Boom. Although the financial condition of the area was on a downswing, the considerable wealth and resources of the Kress company allowed for such grand-scale construction to proceed with little difficulty. Once it opened, the business thrived due to the rapid increase in St. Petersburg's population.

The national head of the Kress architectural division, E.E. Worth, praised the quality of the workmanship of the St. Petersburg Kress store as "the best I have ever seen." He announced, "I do not see how it could be made any finer by human hands."⁵ Local building experts agreed that the Kress building was one of the most substantial

¹ Bernice L. Thomas, "Five Dime Design: The Legacy of the Dime-Store Magnate Samuel H. Kress Lives on in Downtowns from Coast to Coast." Historic Preservation: The Magazine of the National Trust for Historic Preservation (Jan.-Feb. 1993), Vol. 45, No. 1, p. 65.

² Ibid.

³ Ibid.

⁴ The National Cyclopaedia of American Biography. Vol. G (New York: James T. White & Co., 1964), p. 540.

⁵ "Officials Laud Workmanship," St. Petersburg Times, April 13, 1928.

**United States Department of the Interior
National Park Service**

**NATIONAL REGISTER OF HISTORIC PLACES
CONTINUATION SHEET**

Section number 8 Page 3 S.H. KRESS & COMPANY BUILDING
PINELLAS COUNTY, FLORIDA
SIGNIFICANCE

and attractive pieces of construction in St. Petersburg.⁶ The St. Petersburg Kress store was constructed by G.A. Miller, a Tampa resident and prominent local builder at the time, following a design by E. J. T. Hoffmann, a New York City architect. The lasting quality of Miller's construction efforts is reflected by the National Register designation of two other local buildings that he constructed, the Kress Store (NR 1983) and the Floridan Hotel (NR 1996), both in Tampa.

When construction of the St. Petersburg Kress Five and Dime Store was completed, Liggett's Drug Store moved from the 300 block of Central Avenue to occupy the first floor of the western portion of the building. "Liggett's Drug Store" signs ran the length of the western facade, as well as along the western portion of the south elevation of the building. The remainder of the building was used by S.H. Kress & Co. for its five and dime store operation. In the late 1940s, Kress expanded, converting Liggett's space to its own use.

The St. Petersburg Kress store ceased operation as a five and dime store in 1980 or 1981. The building was vacant until 1982, when the City of St. Petersburg Municipal Services began extensive renovations of the interior and moved its offices into the building. The building became vacant once more in 1996, when the city moved its offices. That year, the Kress Building was purchased by its current owner, who immediately embarked on an aggressive plan of restoration to restore the building's original beauty. Local authorities designated the St. Petersburg Kress Building as a historic landmark later that year.

Fewer than half of the 264 Kress stores built during Samuel H. Kress's lifetime still stand. The majority of them have been converted to a variety of uses. But some, like the St. Petersburg store, have served as the focus of downtown revitalization projects. The Kress Building is historically significant to the city of St. Petersburg, not only as a reminder of the heyday of downtown commerce, but also as the touchstone of St. Petersburg's current economic surge.

ARCHITECTURAL CONTEXT

The St. Petersburg Kress Building is a classically-inspired structure that has a Beaux Arts style influence. The Beaux Arts style became popular in nineteenth century Europe, deriving from the Ecole des Beaux Arts, an eminent school of architecture located in Paris, France. American architects such as Richard Morris Hunt and Henry Hobson Richardson who attended the illustrious school brought the style back to the states.⁷ By the end of the century followers of the Beaux Arts style dominated the American architectural profession.⁸ Common features of the style are coupled columns, long flights of steps, and arched and linteled openings.⁹ Figure

⁶ Ibid.

⁷ Marcus Whiffen, American Architecture Since 1780 (Cambridge, MA: The MIT Press, 1992) p. 149.

⁸ Ibid.

⁹ Ibid.

United States Department of the Interior
National Park Service

**NATIONAL REGISTER OF HISTORIC PLACES
CONTINUATION SHEET**

Section number 8 Page 4 S.H. KRESS & COMPANY BUILDING
PINELLAS COUNTY, FLORIDA
SIGNIFICANCE

sculpture, another common feature of the style, appears more in the Beaux Arts style than in any other style, and is often used to add interest to the skyline.

Unlike the owners of other chain stores, Kress preferred to build his own stores rather than to lease them, and their appearance distinguished them from those of his competitors.¹⁰ The early Kress stores were symmetrical buildings constructed of pale yellow brick trimmed in white.¹¹ They also had curved display windows which led to recessed entrances.¹² All Kress stores contained two selling floors on the lower levels and warehouses and office space above.¹³ Many of the building designs also featured the Kress coat of arms.¹⁴

Because of his keen interest in the design of his stores, Kress established an architecture division at his New York headquarters in 1900.¹⁵ He allowed no architectural plans to leave these headquarters without his approval.¹⁶ Kress did not hesitate to invest considerable amounts of money in the design of his buildings, and some were quite elaborate.¹⁷ These included a Spanish-inspired building in Tampa, Florida; a Greek temple storefront in Montgomery, Alabama; buildings resembling castles in Wichita and Emporia, Kansas; and a store resembling an English country house in Lakeland, Florida.¹⁸ The designs of some of his buildings reflect his interest in Medieval and Renaissance art.¹⁹

ARCHITECTURAL SIGNIFICANCE

Out of all of the Kress buildings, it was the St. Petersburg Kress store that the head of the Kress architectural division recognized as the best store in the chain.²⁰ Its decorative ornamentation, particularly in the parapet, is reflected today in only a few remaining buildings from the time the Kress Building was constructed. The building is a tribute to that era, as well as a significant example of the use of the Beaux Arts style in local architecture during the late 1920s.

Typical of the basic design of Kress buildings, the St. Petersburg store employs a tripartite system of articulation which had come into vogue in the 1890s. This consisted of dividing the building into distinct treatments for the lower story, the intermediate stories and the uppermost story. The principal elevations of the

¹⁰ Thomas, p. 65.

¹¹ Ibid.

¹² Ibid.

¹³ Ibid.

¹⁴ Ibid.

¹⁵ Ibid.

¹⁶ Ibid.

¹⁷ Ibid.

¹⁸ Ibid.

¹⁹ Ibid.

²⁰ "Officials Laud Workmanship," St. Petersburg Times, April 13, 1928.

**United States Department of the Interior
National Park Service**

**NATIONAL REGISTER OF HISTORIC PLACES
CONTINUATION SHEET**

Section number 8 Page 5

S.H. KRESS & COMPANY BUILDING
PINELLAS COUNTY, FLORIDA
SIGNIFICANCE

lower story of the St. Petersburg Kess Building are nearly entirely glazed, and feature tall windows with fixed glass transoms. The intermediate three stories are faced in terra cotta and are articulated by decorative spandrels. Above, a dentiled cornice, topped by a parapet wall with pairs of urns, reflects the influence of the Beaux Arts style.

United States Department of the Interior
National Park Service

**NATIONAL REGISTER OF HISTORIC PLACES
CONTINUATION SHEET**

Section number 9 Page 1

S.H. KRESS & COMPANY BUILDING
PINELLAS COUNTY, FLORIDA
MAJOR BIBLIOGRAPHICAL REFERENCES

REFERENCES

Dunn, Hampton. Yesterday's St. Petersburg. E.A. Seemann Publishing, Inc.: Fla., 1973.

Engelmann, Jr., Martin and Charles A. Ernst, Appraisal Report, Tropical Realty Appraisal Services, Inc., June 30, 1995.

"Kress." Encyclopedia Americana. Grolier Inc.: Conn., 1990, Volume 16.

"Kress." The Encyclopedia Britannica: Micropedia. Encyclopedia Britannica, Inc.: Ill., 1993, Volume 7.

"Officials Laud Workmanship." St. Petersburg Times. April 13, 1928.

St. Petersburg City Directory. R.L. Polk and Company: Fla., 1927-1982.

"This is the Next One." St. Petersburg Times. December 2, 1998.

Thomas, Bernice L. "Five and Dime Design: The Legacy of Dime-Store Magnate Samuel H. Kress Lives on in
Downtowns from Coast to Coast." Historic Preservation: The Magazine of the National Trust for Historic
Preservation. Jan.-Feb. 1993, Vol. 45, No. 1.

Whiffen, Marcus, American Architecture Since 1780. The MIT Press: Cambridge, Mass., 1992.

**United States Department of the Interior
National Park Service**

**NATIONAL REGISTER OF HISTORIC PLACES
CONTINUATION SHEET**

Section number 10 Page 1

S.H. KRESS & COMPANY BUILDING
PINELLAS COUNTY, FLORIDA
GEOGRAPHICAL DATA

VERBAL BOUNDARY DESCRIPTION

Lots 11 and 12 of Block 27 of the Revised Map of St. Petersburg.

BOUNDARY JUSTIFICATION

The boundaries include the entire site historically associated with the subject building.

**United States Department of the Interior
National Park Service**

**NATIONAL REGISTER OF HISTORIC PLACES
CONTINUATION SHEET**

Section number _____ Page 1 S.H. KRESS & COMPANY BUILDING
PINELLAS COUNTY, FLORIDA
PHOTOGRAPHS

PHOTO INVENTORY

1. S.H. Kress & Company Building, St. Petersburg
2. Pinellas County, Florida
3. Sarah J. Parker
4. April, 2000
5. Virtual Realty, 535 Central Avenue, St. Petersburg, Florida
6. South elevation, camera facing northeast
7. 1 of 23

Items 1-5 are the same for photographs 2-23

6. West elevation, camera facing northeast
7. 2 of 23

6. South and west elevations, camera facing northeast
7. 3 of 23

6. String course detail, north elevation, camera facing south
7. 4 of 23

6. West elevation detail, camera facing east
7. 5 of 23

6. Window detail, west elevation, camera facing east
7. 6 of 23

6. Cornice, north elevation, camera facing south
7. 7 of 23

6. Kress sign and parapet wall, south elevation, camera facing north
7. 8 of 23

6. West elevation, camera facing east
7. 9 of 23

6. Kress sign and parapet wall, north elevation, camera facing south
7. 10 of 23

**United States Department of the Interior
National Park Service**

**NATIONAL REGISTER OF HISTORIC PLACES
CONTINUATION SHEET**

Section number _____ Page 2

S.H. KRESS & COMPANY BUILDING
PINELLAS COUNTY, FLORIDA
PHOTOGRAPHS

- 6. North elevation, camera facing south
- 7. 11 of 23

- 6. North and east elevations, camera facing southwest
- 7. 12 of 23

- 6. Basement stairway, camera facing north
- 7. 13 of 23

- 6. Lobby stairway detail, first floor, camera facing north
- 7. 14 of 23

- 6. Lobby elevators, camera facing north
- 7. 15 of 23

- 6. Lobby, camera facing east
- 7. 16 of 23

- 6. First floor, camera facing east
- 7. 17 of 23

- 6. Second floor, camera facing northeast
- 7. 18 of 23

- 6. Third floor, camera facing southwest
- 7. 19 of 23

- 6. Third floor, location uncertain
- 7. 20 of 23

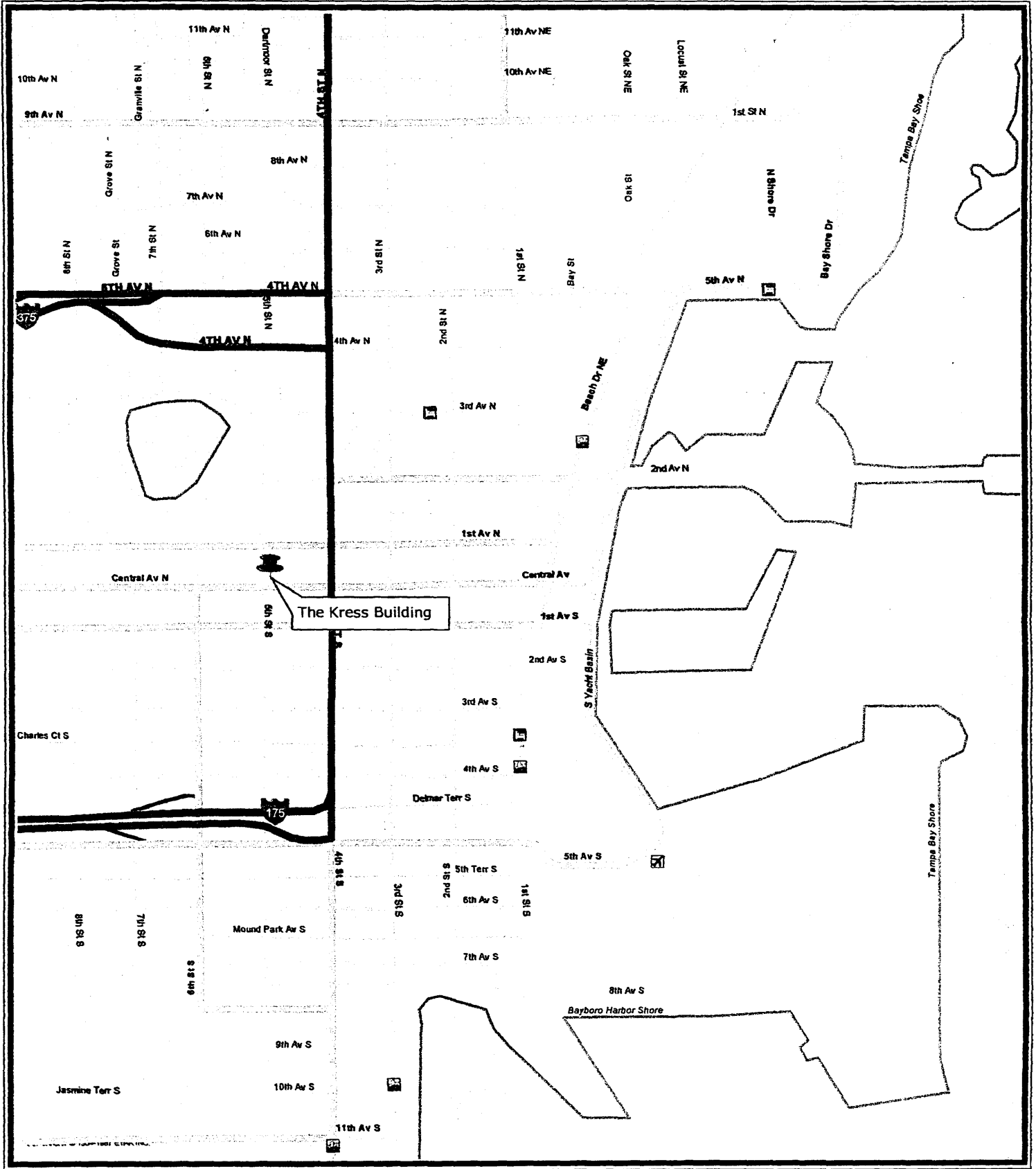
- 6. Third floor, camera facing northwest
- 7. 21 of 23

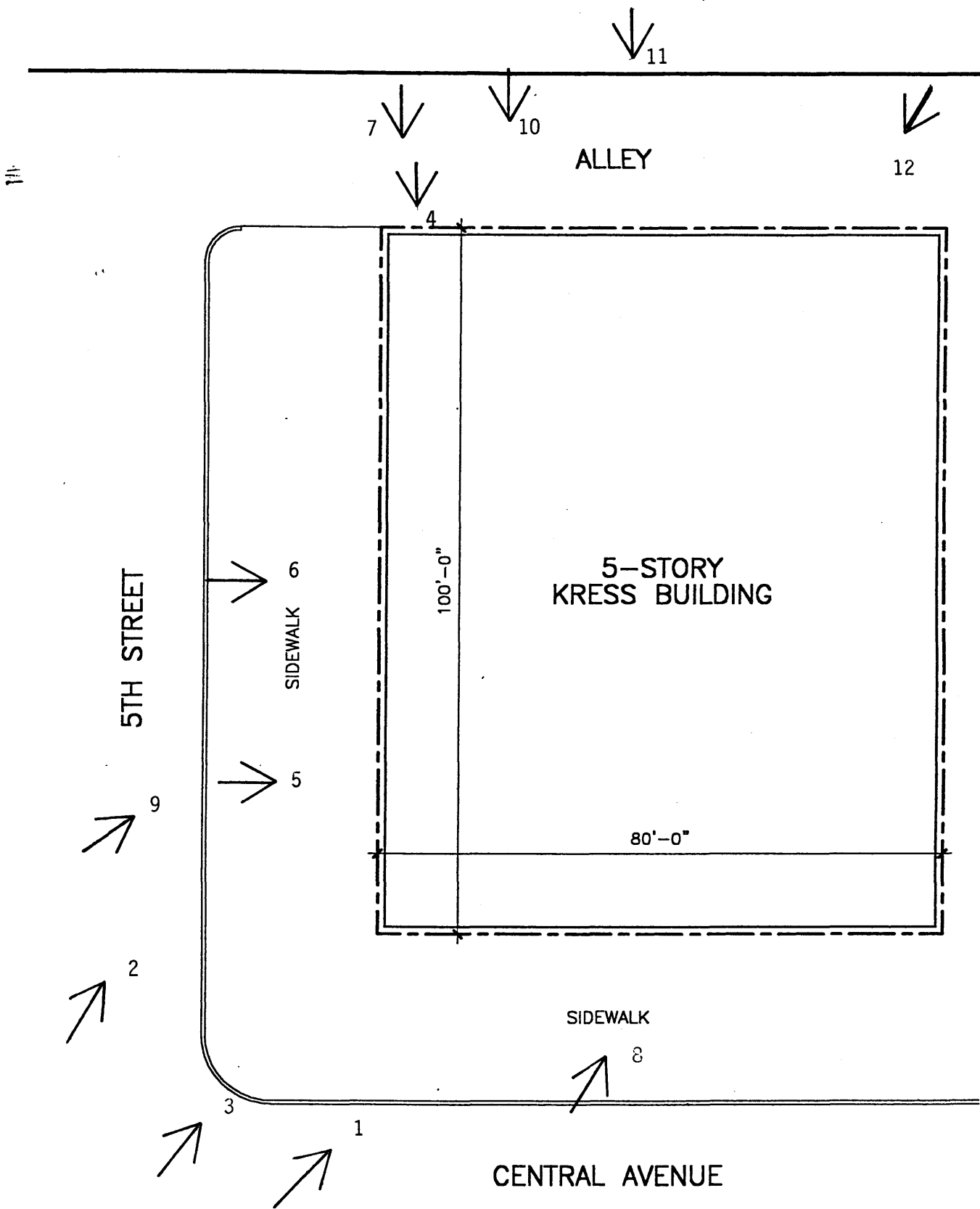
- 6. Third floor, camera facing east
- 7. 22 of 23

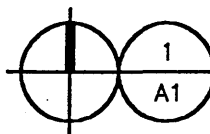
- 6. Fourth floor lobby, camera facing west
- 7. 23 of 23

Current Map

S.H. Kress & Company Building
475 Central Avenue
St. Petersburg, Pinellas County, FL






 1 SITE PLAN
 A1 SCALE: 1" = 20'-0"

**RHODE CLEMMONS
ARCHITECTS, INC.**

338 FIRST AVE NORTH, ST. PETERSBURG, FL 33701
813-821-7878 FAX 813-821-9752 AA 2845

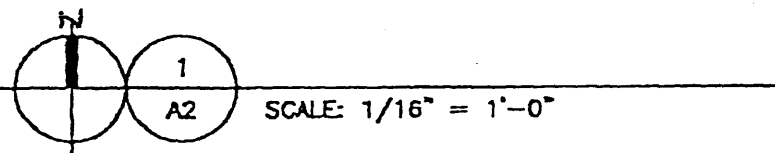
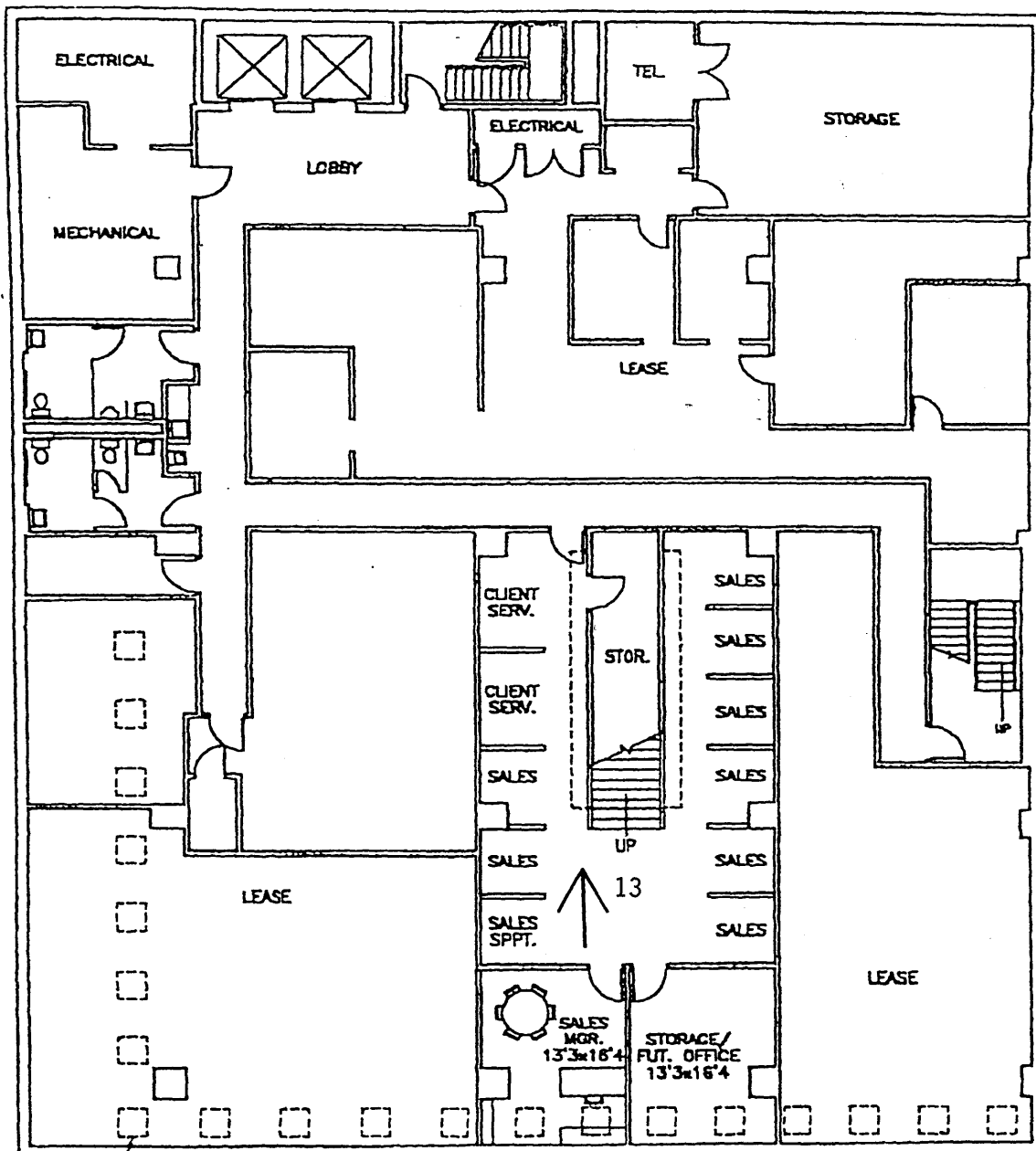
KRESS BUILDING

475 CENTRAL AVENUE
ST. PETERSBURG, FL 33701

Pinellas County

A1

18 APR 00



RHODE CLEMMONS
ARCHITECTS INC.

AA 2845

338 FIRST AVENUE NORTH
ST. PETERSBURG, FL 33701
727-821-7878 FAX 727-821-8752

KRESS BUILDING BASEMENT

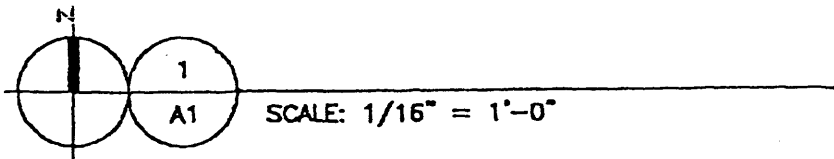
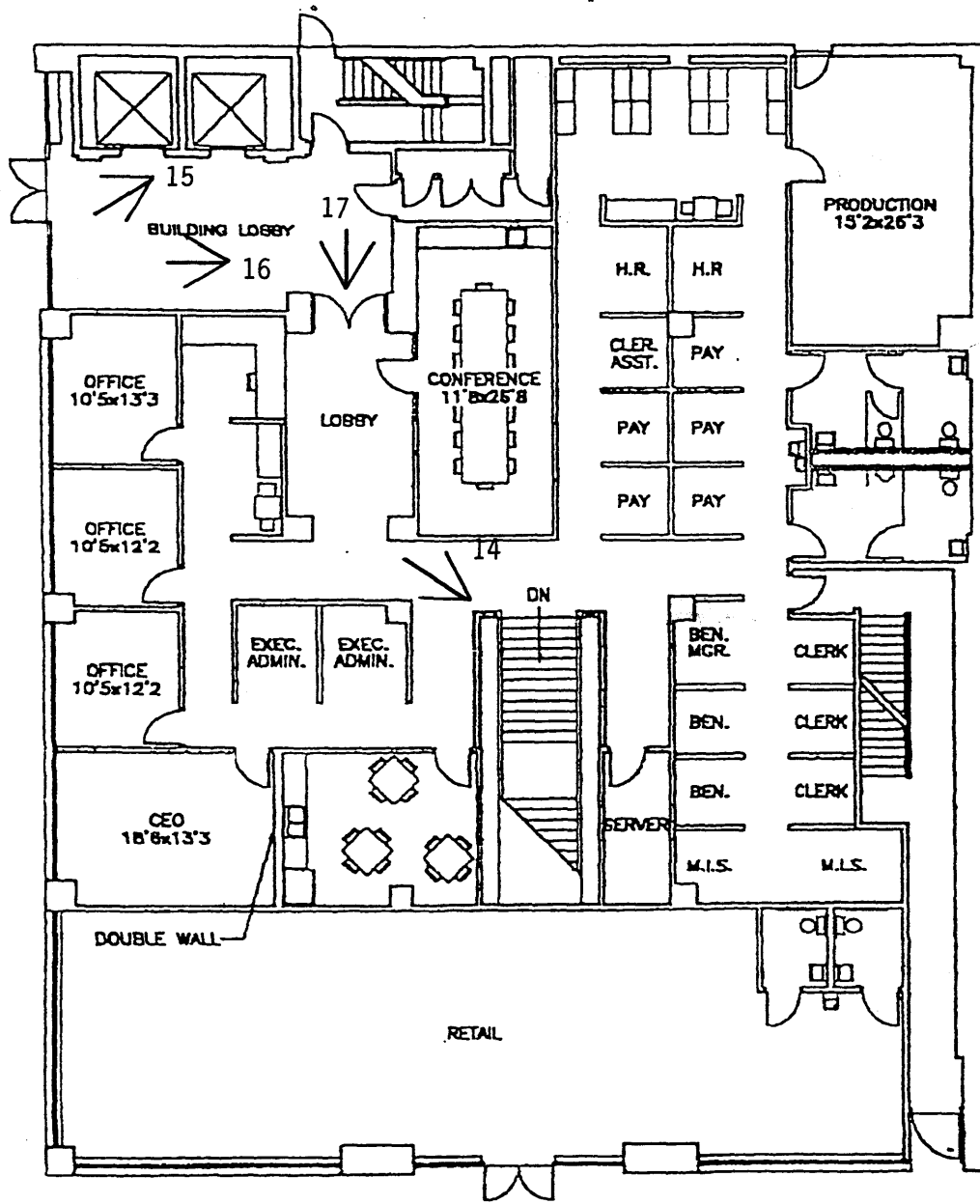
475 CENTRAL AVENUE
ST. PETERSBURG, FLORIDA 33701

Pinellas County

A2

15 AUG 99

COPYRIGHT 1999, ALL RIGHTS RESERVED



RHODE CLEMMONS
ARCHITECTS INC.

AA 2845

338 FIRST AVENUE NORTH
ST. PETERSBURG, FL 33701
727-821-7878 FAX 727-821-8752

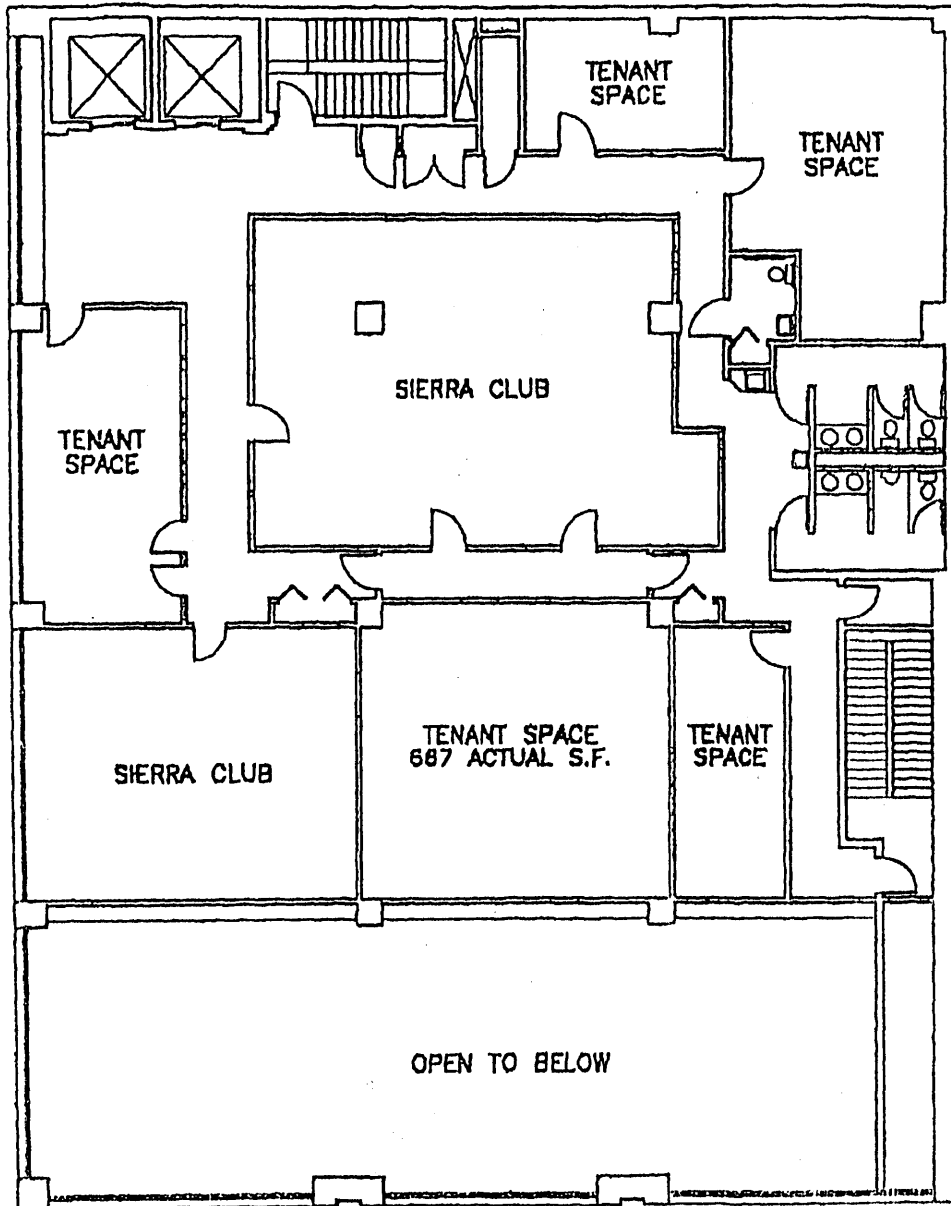
COPYRIGHT 1989, ALL RIGHTS RESERVED

KRESS BUILDING 1ST FLOOR

475 CENTRAL AVENUE
ST. PETERSBURG, FLORIDA 33701

Pinellas County 15 AUG 99

A1



**KRESS BUILDING
MEZZANINE**

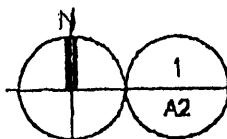
475 CENTRAL AVENUE
ST. PETERSBURG, FLORIDA 33701

Pinellas County

**RHODE CLEMMONS
ARCHITECTS INC.**

AA 2845

338 FIRST AVENUE NORTH
ST. PETERSBURG, FL 33701
727-821-7878 FAX 727-821-9752



MEZZANINE FLOOR PLAN

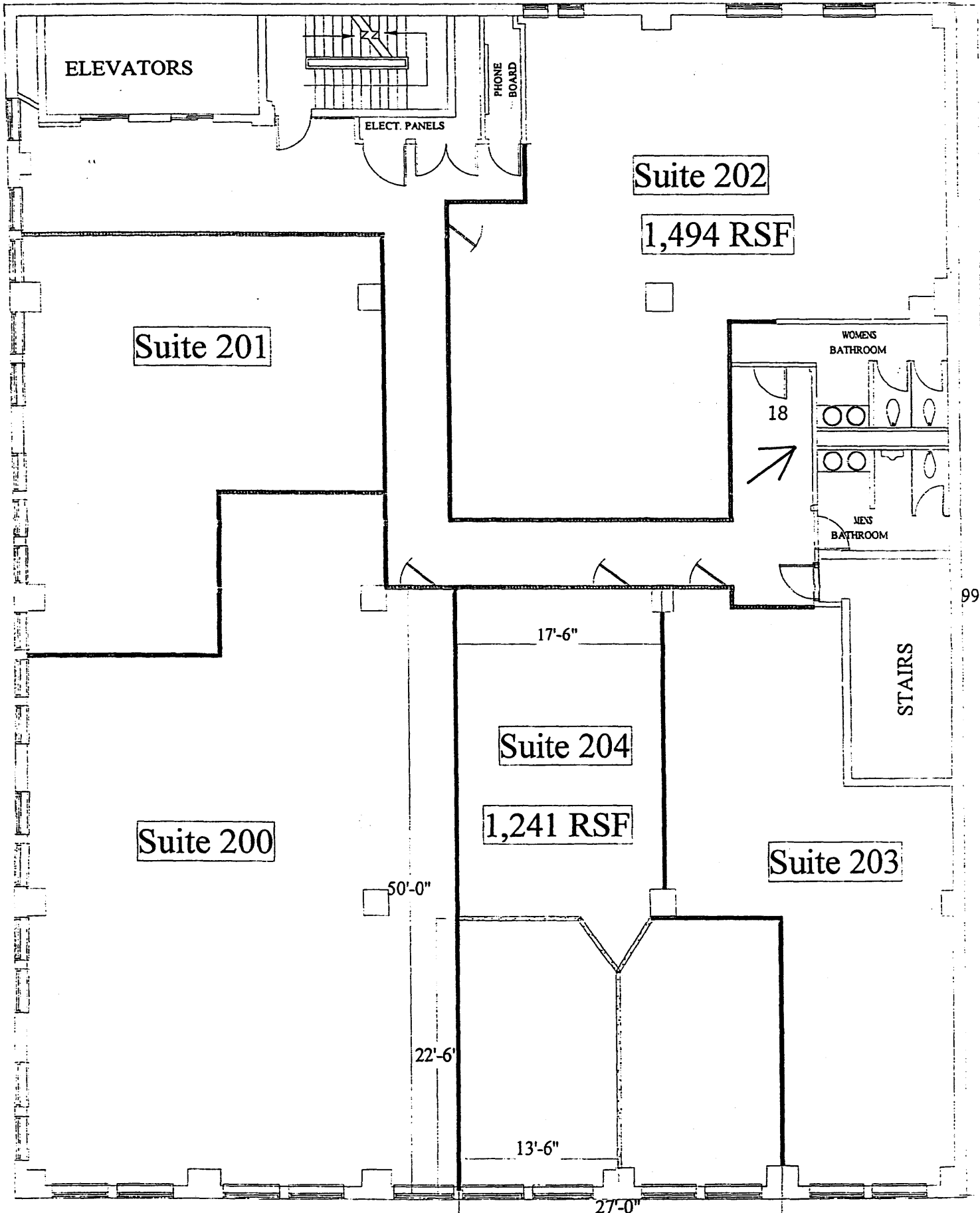
SCALE: 1/16" = 1'-0"

A2

30 NOV 98



The Kress Building: Second Floor



ELEVATORS

ELECT. PANELS

PHONE BOARD

Suite 202

1,494 RSF

Suite 201

WOMENS BATHROOM

18

MENS BATHROOM

STAIRS

99'

17'-6"

Suite 204

1,241 RSF

Suite 200

Suite 203

50'-0"

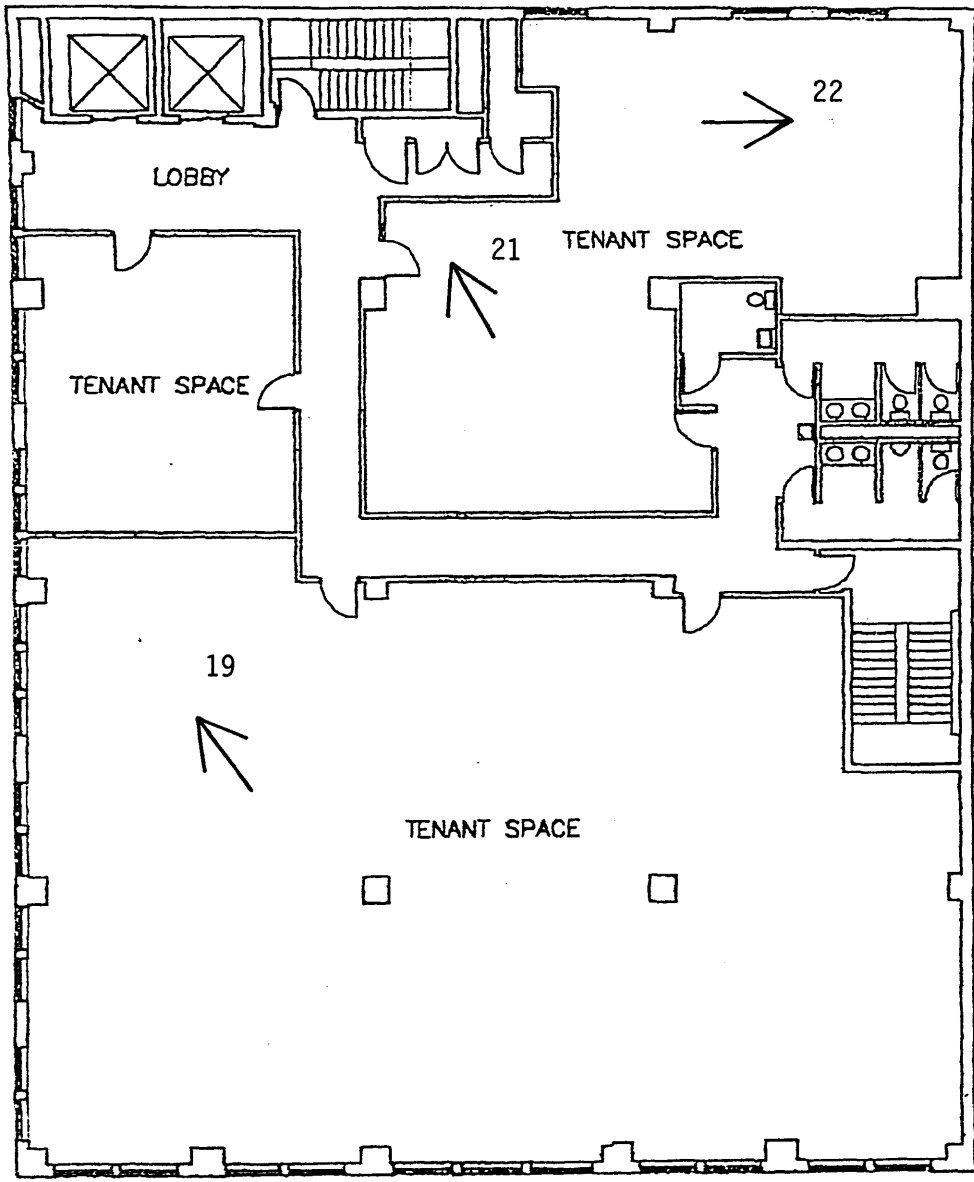
22'-6"

13'-6"

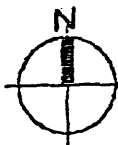
27'-0"

Scale: 3/32" = 1'0"

5TH STREET NORTH



CENTRAL AVENUE

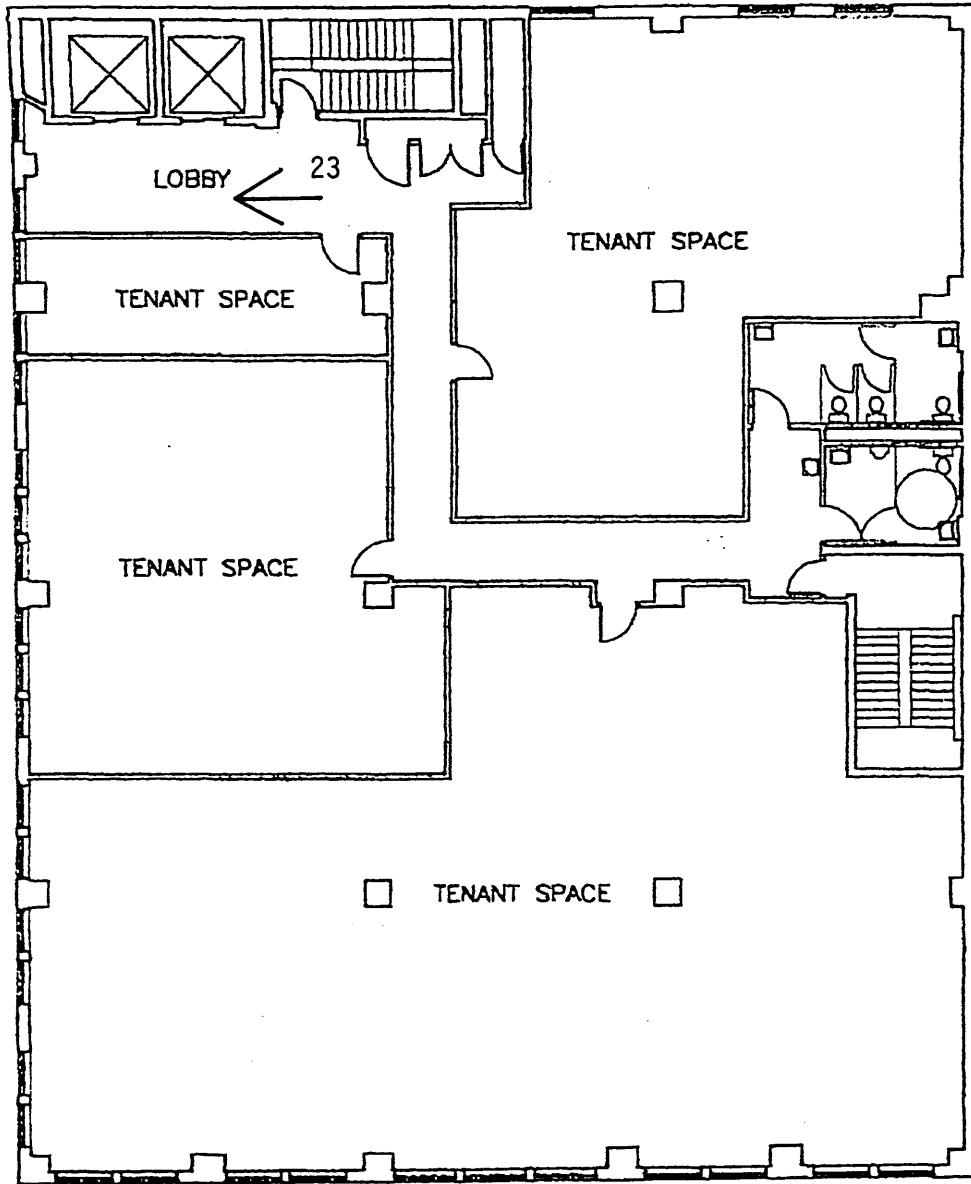


THIRD FLOOR PLAN

SCALE: 1/16" = 1'-0"

S.H. Kress & Company Building
475 Central Avenue
St. Petersburg, Pinellas Co.
Florida

5TH STREET NORTH



CENTRAL AVENUE



FOURTH FLOOR PLAN

SCALE: 1/16" = 1'-0"

S.H. Kress & Company Building
475 Central Avenue
St. Petersburg, Pinellas Co.
Florida