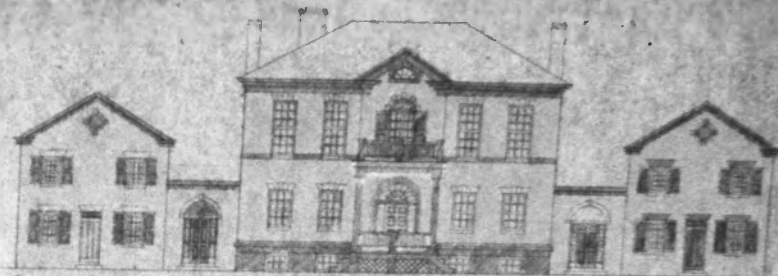
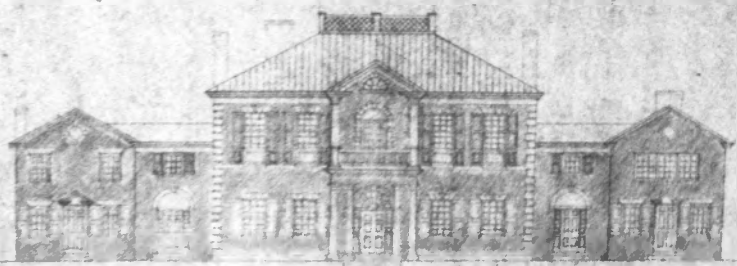


1750-1800 (50 YEARS)



"CEDAR HILL"

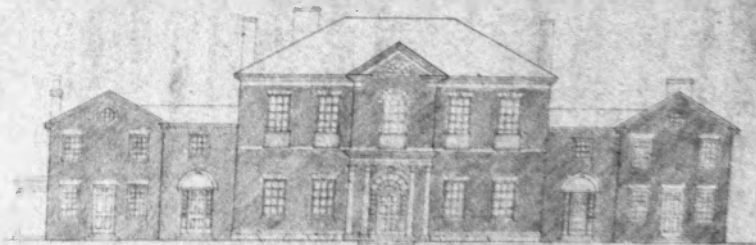
1800-1915 (115 YEARS)



"BELLEVUE"

1915-1952 (17 YEARS)

FASHIONED AFTER "MOUNT PLEASANT" PHILA, PA



"DUMBARTON HOUSE"

1952-1987 (35 YEARS)

HORACE PEASLEE, FISKE KIMBALL
ARCHITECTS

DUMBARTON HOUSE

THE NATIONAL SOCIETY OF THE COLONIAL DAMES OF AMERICA

2715 QUE STREET NORTHWEST WASHINGTON, D.C.

HISTORIC DEVELOPMENT

MARTIN JAY ROSENBLUM AND ASSOCIATES
PHILADELPHIA, PENNSYLVANIA























