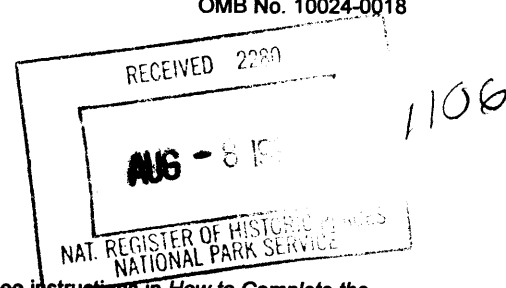


United States Department of the Interior
National Park Service

National Register of Historic Places
Registration Form



This form is for use in nominating or requesting determinations for individual properties and districts. See instructions in *How to Complete the National Register of Historic Places registration Form* (National Register Bulletin 16A). Complete each item by marking "x" in the appropriate box or by entering the information requested. If an item does not apply to the property being documented, enter "N/A" for "not applicable." For functions, architectural classification, materials, and areas of significance, enter only categories and subcategories from the instructions. Place additional entries and narrative items on continuation sheets (NPS Form 10-900a). Use a typewriter, word processor, or computer, to complete all items.

1. Name of Property

historic name Gerhart, Augustus and Augusta House

other names/site number _____

2. Location

street & number 321 Iowa Street N/A not for publication

city or town Highmore N/A vicinity

state South Dakota code SD county Hyde code 069 zip code 57345

3. State/Federal Agency Certification

As the designated authority under the National Historic Preservation Act, as amended, I hereby certify that this nomination request for determination of eligibility meets the documentation standards for registering properties in the National Register of Historic Places and meets the procedural and professional requirements set for in 36 CFR Part 60. In my opinion, the property meets does not meet the National Register criteria. I recommend that this property be considered significant

nationally statewide locally. (See continuation sheet for additional comments.)

Jay D. Voat 07-29-97
Signature of certifying official/Title Date

State or Federal agency and bureau

In my opinion, the property meets does not meet the National Register criteria. (See Continuation sheet for additional comments.)

Signature of certifying official/Title Date

State or Federal agency and bureau

4. National Park Service Certification

- I hereby certify that the property is:
- entered in the National Register.
 See continuation sheet
- determined eligible for the National Register.
 See continuation sheet
- determined not eligible for the National Register
- removed from the National Register.
- other, (explain): _____

Edson H. Beall 9/4/97
Signature of the Keeper Date of Action

8. Statement of Significance

Applicable National Register Criteria

(Mark "x" in one or more boxes for the criteria qualifying the property for National Register listing.)

- A Property is associated with events that have made a significant contribution to the broad patterns of our history.
B Property is associated with the lives of persons significant in our past.
C Property embodies the distinctive characteristics of a type, period, or method of construction or represents the work of a master, or possesses high artistic values, or represents a significant and distinguishable entity whose components lack individual distinction.
D Property has yielded, or is likely to yield, information important in prehistory or history.

Areas of Significance

(Enter categories from instructions)

Exploration/Settlement

Period of Significance

1896-1919

Significant Dates

1896

Significant Person

(complete if Criterion B is marked)

Gerhart, Augustus Norman and Gerhart, Augusta Howe

Cultural Affiliation

N/A

Architect/Builder

Unknown

Criteria Considerations

(Mark "x" in all boxes that apply.)

Property is:

- A owned by a religious institution or used for religious purposes.
B removed from its original location.
C moved from its original location.
D a cemetery.
E a reconstructed building, object, or structure.
F a commemorative property
G less than 50 year of age or achieved significance within the past 50 years.

Narrative Statement of Significance

(Explain the significance of the property on one or more continuation sheets.)

9. Major Bibliographical References

Bibliography

(Cite the books, articles, and other sources used in preparing this form on one or more continuation sheets.)

Previous documentation on file (NPS):

- preliminary determination of individual listing (36 CFR 67) has been requested
previously listed in the National Register
Previously determined eligible by the National Register
designated a National Historic Landmark
recorded by Historic American Buildings Survey #
recorded by Historic American Engineering Record #

Primary location of additional data:

- State Historic Preservation Office
Other State Agency
Federal Agency
Local Government
University
Other

Name of repository:

South Dakota Historical Society, Pierre, SD

Gerhart, Augustus and Augusta House
Name of Property

Hyde County, South Dakota
County and State

10. Geographical Data

Acreege of Property less than one acre

UTM References

(place additional UTM references on a continuation sheet.)

1 14 464900 4929220
Zone Easting Northing

3 _____
Zone Easting Northing

See continuation sheet

Verbal Boundary Description

(Describe the boundaries of the property on a continuation sheet.)

Boundary Justification

(Explain why the boundaries were selected on a continuation sheet.)

11. Form Prepared By

name/title Brad Wolf and Pat Lindemann
organization South Dakota Historical Society date July 18, 1997
street & number 900 Governors Drive telephone (605) 773 -3458
city or town Pierre state SD zip code 57501

Additional Documentation

submit the following items with the completed form:

Continuation Sheets

Maps

A **USGS map** (7.5 Or 15 minute series) indicating the property's location

A **Sketch map** for historic districts and properties having large acreage or numerous resources.

Photographs

Representative **black and white photographs** of the property.

Additional items

(Check with the SHPO) or FPO for any additional items

Property Owner

(Complete this item at the request of SHPO or FPO.)

name Dean and Pat Lindemann
street & number P O Box 513 telephone (605) 852-2206
city or town Highmore state SD zip code 57345

Paperwork Reduction Act Statement: This information is being collected for applications to the National Register of Historic Places to nominate properties for listing or determine eligibility for listing, to list properties, and to amend existing listing. Response to this request is required to obtain a benefit in accordance with the National Historic Preservation Act, as amended (16 U.S.C. 470 *et seq.*)

Estimated Burden Statement: Public reporting burden for this form is estimated to average 18.1 hours per response including time for reviewing instructions, gathering and maintaining data, and completing and reviewing the form. Direct comments regarding this burden estimate or any aspect of this form to the Chief, Administrative Services Division, National Park Service, P. O. Box 37127, Washington, DC 20013-7127; and the Office of Management and Budget, Paperwork Reductions Projects (1024-0018), Washington, DC 20303.

United States Department of the Interior
National Park Service

National Register of Historic Places Continuation Sheet

Section number 8 Page 7

Gerhart, Augustus and Augusta House
Hyde County, SD

VIII. Significance Statement

Statement of Significance

The house of Augustus "Gus" and Augusta Gerhart is eligible under Criteria B for its association with the contributions the Gerharts made in the early settlement and development of Highmore and Hyde County, South Dakota. Bought by Augusta Gerhart in 1896, the home served as a center of activity as a meeting place for church services, dinner parties, and other public gatherings held by her. She lived in the house until her death in 1906. Gus Gerhart lived in the house until 1919, during which time he was a state legislator, local sheriff, and ran a lumberyard in the newly formed town of Highmore. Even after the Gerharts left the area, the house is still locally known as the Gerhart House. Though it is hard to assess the role in person or persons played in a community, the tangible link of the Gerhart name being associated with the house after so many years shows the significance Gus and Augusta had in the community. The house is also significant in South Dakota history in Permanent Rural and Urban Settlement under Urban Development, Residential Living from 1855 to 1899.

Historical Background and Significance

Christina Jemina Grant, an early pioneer in Hyde County, originally built the house as a small residence in 1889. She was an unmarried woman who came to Highmore in 1883.¹ After her death in 1895, the house and lots 19 and 20 were given to her brother, Alexander Grant, for \$1 and other valuable consideration. Alexander sold the property to Augusta Gerhart in June, 1896.² Augusta Gerhart bought lot 18 from Rose Wheeler in 1901 to complete the parcel associated with the Gerharts.³ When Augusta died in 1906, the property passed to her daughter, Minnie Gerhart. Gus Gerhart continued to

¹ *Hyde County Bulletin* (Highmore, South Dakota), 9 March 1889.

² *Deeds and Warrants of Hyde County*, Book 15 (Highmore, SD: Hyde County), 347.

³ *Deeds and Warrants of Hyde County*, Book 16 (Highmore, SD: Hyde County), 78.

United States Department of the Interior
National Park ServiceNational Register of Historic Places
Continuation SheetSection number 8 Page 8Gerhart, Augustus and Augusta House
Hyde County, SD

live in the home until 1919, when he married Susan Lewis and moved to Pierre. Mr. Gerhart lived in Pierre until 1925, where he died at the age of 77.⁴

The South Dakota Territorial Government created Hyde County in 1872, but its present organization and boundaries were not finalized until April 12, 1883. The town of Highmore is located at Siding No. 5 on the Northwestern Railroad, from a survey done by the company. The railroad established a section house for the men to stay in, then built a shack to sell food and drugs, and thus the town of Highmore began.⁵ Though the town is located next to the railroad, the railroad company did not help organize the town, but contributed to its growth by allowing easy access to the community and helped make the town a distribution center for the area.⁶ The first survey and plat of the town was completed on June 30, 1882 by Thomas F. Nichol.⁷ It was during this initial formation of the town that the Gerharts arrived in 1882. At the time of their arrival, only six families lived in Highmore.

The Gerharts arrived in Highmore in July of 1882 from Farewell, Michigan and built a home. In 1895, a tornado destroyed the house, which led the Gerharts to purchase of the house Christina Grant. When the Gerharts bought the property, Augustus "Gus" enlarged and remodeled the house, creating what was considered the grand home of the area.⁸

Mr. Augustus Norman "Gus" Gerhart, Augusta's husband, was a prominent citizen in Highmore.⁹ When arriving in Highmore, Gerhart opened a lumber yard with a friend creating Newton & Gerhart Lumber. Since this is an area with no trees, Mr. Gerhart's lumberyard brought in lumber from other areas to provide the materials needed to build the town. After a few years, Gerhart bought out his partner, Newton, and became sole owner. The lumber yard (non-extant) was one of the first buildings and businesses in the town of Highmore.¹⁰

⁴ *Highmore Herald* (Highmore, South Dakota), 12 March 1915.

⁵ Hyde County South Dakota Centennial Committee, *Staying Power* (Pierre, SD: State Publishing Co., 1977), 18.

⁶ *Ibid.*, 79-80.

⁷ *Ibid.*, 80.

⁸ Pioneer Daughters Biographies, August Gerhart, 1977," TMs, South Dakota State Historical Archives, Cultural Heritage Center, Pierre, South Dakota.

⁹ *Ibid.*, 394-395.

¹⁰ John B. Perkins, *History of Hyde County, South Dakota: from its organization to the present time* (s.l.: s.n., 1908), 223.

Gerhart, Augustus and Augusta House
Name of Property

Hyde County, South Dakota
County and State

5. Classification

Ownership of Property
(Check as many boxes as apply)

Category of Property
(Check only one box)

Number of Resources within Property
(Do not include previously listed resources in count)

- private
- public-local
- public-State
- public-Federal

- building(s)
- district
- site
- structure
- object

Contributing	Noncontributing	
1	1	buildings
		sites
		structures
		objects
1	1	Total

Name of related multiple property listing
(Enter "N/A" if property is not part of a multiple property listing.)
n/a

Number of Contributing resources previously listed in the National Register
0

6. Function or Use

Historic Functions
(Enter categories from instructions)

DOMESTIC: Single Dwelling
DOMESTIC: Secondary Structure

Current Functions
(Enter categories from instructions)

DOMESTIC: Single Dwelling
DOMESTIC: Secondary Structure

7. Description

Architectural Classification
(Enter categories from instructions)

LATE VICTORIAN: VERNACULAR

Materials
(Enter categories from instructions)

foundation STONE/CONCRETE
walls WOOD: WEATHERBOARD
roof WOOD SHINGLE
other BRICK - CHIMNEY

Narrative Description

(Describe the historic and current condition of the property on one or more continuation sheets.)

See Continuation Sheets

United States Department of the Interior
National Park Service

National Register of Historic Places Continuation Sheet

Section number 7 Page 1

Gerhart, Augustus and Augusta House
Hyde County, SD

VII. DESCRIPTION

Physical Description

The Gerhart house is a large two story house located on the corner of SD highway 47 and 4th street in Highmore, South Dakota. In 1889, Christina Grant built a small front gable and wing Folk Victorian house and died soon after. Mr. Augustus "Gus" and Augusta Gerhart bought the house in 1896 and began major remodeling and new construction. Gerhart added a wing to the west side, along with porches and balconies. This gave the house a cross floor plan when the Gerharts lived in the home.

When Augusta died in 1906, the property passed to her daughter, Minnie Gerhart. Minnie Gerhart, married Elmer Quirk, a rancher with land outside of Highmore, in 1911. After Minnie's death in 1922, Elmer divided the house into a main house in the front and an apartment in the back.

Lucille Hawkinson, Elmer's daughter, and her son came to live with Elmer in Highmore in the 1940s when Dave, Lucille's husband, went to fight in World War II. When Dave returned in 1946, he moved into the house. They lived in the house with Elmer Quirk until 1954, when they moved to Hastings, Nebraska, while Elmer stayed until his death. After Elmer's death in 1954, the property passed to Lucille Quirk Hawkinson. The house was vacant for 19 years, except when the Hawkinsons came back in summers until 1986. In 1973-1975, the school across the street used the house for extra classrooms, because of overflowing classes. At this time it became vacant and has sat empty and unused until it was purchased by Dean and Pat Lindemann in 1995. They are in the process of converting the house back into a single family dwelling.

The original house dates to 1889 and features a front gable and wing Folk Victorian design, oriented towards fourth street, with a foundation of native stone. When the Gerharts purchased the house in 1896, they extensively remodeled it and added a wing to the west side, making a cross plan. At the time of the remodeling they also added a concrete basement under the addition. A small entry was added to the southern facade sometime after 1904, but before 1928.

Lightning struck the east wing facing Iowa street in 1928, causing the parlor an upstairs bedroom and part of a dining room to burn. Evidence of the fire can be seen in the charred timbers in the attic. A sleeping porch with a second floor balcony and hipped roof replaced the burned wing and changed the

United States Department of the Interior
National Park Service

National Register of Historic Places Continuation Sheet

Section number 7 Page 2

Gerhart, Augustus and Augusta House
Hyde County, SD

house's orientation towards Iowa Street. Thus, the current floor plan is an asymmetrical cross plan. It has a cross gabled roof and a hipped roof on the 1928 porch addition, all with wood shingles.

There is a partial basement under the house. It starts about half under the 1889 house and extends the length of the 1896 addition. The basement walls are poured concrete added during the addition to provide shelters in case of a tornado or cyclone. The basement has three entrances, one bulkhead door entrance to the outside on the north side, one on the east side underneath the central staircase, and one trap-door entrance on the west side.

The east/front facade faces Iowa Street and contains the 1928 enclosed porch with a hipped roof. It contains an entrance on the southern corner with a white aluminum screen door over a half glass door with three horizontal panels below. In the center of the facade is a set of three ribboned 1/1 double-hung windows from 1928. On the northern end is a set of coupled 1/1 double-hung windows from 1928.

The gable end of the second story east facade has an off centered entrance to the second story balcony. There is a wooden screen door which covers a half-glass door with three horizontal panels below from 1928. The balcony has two 3 foot walls on the north and south side covered in the same clapboard siding as the house. The east end of the balcony has no railings.

The north facade going from east to west contains a small 1/1 double-hung window in the 1928 addition. The 1889 gable end contains two equally spaced 1/1 double-hung windows from 1928. The 1896 wing begins with a set of 1/1 coupled double-hung windows from 1928. Below the windows is a bulkhead door that provides an entrance to the basement under the 1896 wing. Next to the bulkhead door is a concrete patio that extends to the entrance to the breakfast nook, which has a wooden half-screen door with three horizontal panels below the screen. Behind the screen door is a half-glass door with three horizontal panels dating to 1896. Going west of the door are two tall 1/1 double-hung windows that date to 1896. On the west corner of the facade is a concrete step that leads to a screen door matching the other screen door on the facade.

The second story gable end on the north facade has two equally spaced windows. The east window is a 1/1 double-hung window matching the other windows from 1896 on the facade. The west window is a

United States Department of the Interior
National Park Service

National Register of Historic Places Continuation Sheet

Section number 7 Page 3

Gerhart, Augustus and Augusta House
Hyde County, SD

smaller 1/1 double-hung window that dates to 1928. On the roof of the 1896 wing is a shed dormer with a set of coupled 1/1 double hung windows dating from 1928.

The west facade is the gable end of the 1896 wing. Just north of the midpoint is a 1/1 double hung window dating to the 1896 addition. On the south corner of the facade is an entrance to a stairway that leads to the second floor apartment. The entrance has a batten door whose base is level with the bottom of the window, and the moldings match.

The second story gable end of the west facade contains two equally spaced 1/1 double-hung windows that date to the 1896 addition. Though these windows are symmetrical, they do not align to the first floor door and window, giving the facade an eclectic appearance.

The southern facade starting from west to east contains a coupled 1/1 double-hung window that dates to the 1896 addition. Beginning at the eastern edge of the window is a gable front entry addition with cornice return that suggests a classical revival style, but the exact date is unknown. A set of coupled 1/1 double-hung windows, matching the 1896 windows, and a half glass door with two vertical panels are on the gable end of this addition. On the east side of the entry addition is a 1/1 double-hung window that matches the 1896 windows on the house.

Continuing east of the entry addition is a bay window with four single pane casement windows from 1996. To the east of the bay is the front facing gable end of the 1889 house. On the west side of the gable is a 1/1 double hung window from 1896. On the south facing gable end is a vinyl 1/1 double hung window installed in 1997, that replaced a set of 1896 coupled 1/1 double hung windows. Continuing east is a set of 1928 coupled 1/1 double-hung windows on the southern end of the 1928 addition.

The second story of the southern facade starting from west to east contains a 1928 shed dormer on the 1896 wing with a set of coupled 1/1 double-hung windows. In the second story of the gable end are two equally spaced 1/1 double-hung windows from 1896.

The interior of the house contains many features from the 1896 and 1928 remodeling and additions. In 1923, Elmer Quirk divided the house into two separate dwellings. The kitchen and formal dining room

United States Department of the Interior
National Park Service

National Register of Historic Places Continuation Sheet

Section number 7 Page 4

Gerhart, Augustus and Augusta House
Hyde County, SD

were closed off into a back apartment. The dining room was partitioned off into a galley kitchen, breakfast nook, and living room.

One enters the house through the 1928 addition on the east facade. The interior of the 1928 addition has baseboards and plaster wall with the an entrance to the family room on the southern corner of the west wall. On the west end of the north wall is a door with a top horizontal panel and three vertical panels beneath it which leads to a small room that may have been a bedroom in a sleeping porch. There is a coupled window on the east wall of this room. On the east end of the north wall of the room is a door to another small room. This room has a window centered on the north wall and a door to another room on the west wall.

One enters the original 1889 portion of the house from the 1928 addition. The door is located in the south corner of the west wall of the porch and is ornately carved with an oval beveled glass pane from 1896. The large room is currently used as a family room. The walls have paneling from 1980 and acoustical tile is on the ceiling. There is a window on the south wall. A 1896 staircase to the second floor with spindled balusters is located on the west wall. Underneath the staircase is an entrance to the stairway to the basement. Also on the north side of the west wall is an entrance to the 1896 addition. On the east side of the north wall is a 1928 door with two panels to another room. On the north side of the east wall is a 1896 fireplace that has a plain wooden mantle and glazed black brick surrounding the firebox.

On the north wall is the entrance to a small room. It has plaster walls and ceilings with five inch baseboards. There is a door to the porch on the east wall. There is a window centered on the north wall. On the north side of the west wall is a two paneled door leading into another small room.

This small room is basically an entry way to the other rooms. There is a window on the north wall. There is a door to the kitchen on the west wall. The east wall has a two paneled door. There is also a two paneled door to a small bathroom on the south wall.

The bathroom has a 1938 tub and shower on the east wall of the bathroom. There is also a stool and sink that date to 1938. The floor has a unique design of a fish in the linoleum on the floor. A two paneled door to the 1896 wing is located on the west wall and a door to the entryway on the north wall.

United States Department of the Interior
National Park Service

National Register of Historic Places Continuation Sheet

Section number 7 Page 5

Gerhart, Augustus and Augusta House
Hyde County, SD

Passing through the west door, one enters a 1923 galley kitchen with a window on the north wall. There is a partial wall on the east end of the south side. On this wall is another two paneled door that opens to face the door to the basement. On the west wall of the kitchen is an entrance to a breakfast nook.

The breakfast nook from 1923 is a built in booth with padded vinyl seats on the west wall. The north wall contains an entrance to the outside. The walls are of plaster with plain dark stained baseboards.

The kitchen opens into a large room to the south that was once a dining room. The walls are plaster with the same plain baseboards as the family room. The south wall contains the 1996 bay window. The west side of the south wall has a door that goes into a mudroom.

The mudroom was added to the house between 1904 and 1928. The entrance from the outside is on the east corner of the south wall. There is also a set of coupled windows on the south wall. The east wall has a single window. The north wall has two doors, one that leads to the dining room, and the other to a former kitchen.

The former kitchen probably dates to the 1896 construction of the wing. The east wall once had a chimney to vent a stove. The northeast corner has a walk in pantry. The west wall has a door on the north side, leading to a small entryway to the outside. In the center of the west wall is a built in cupboard that dates to the 1896. On the south side of the west wall is a door that leads to a stairwell to the second floor.

The west side of the house has a interior stairwell to the second floor apartment. There is also a small entryway on the north side under the stairs.

The second floor is accessed from the west side stair or the stairs in the family room. The stairs in the family room have a unique "V" at the top step to choose which half the house one would wish to go. East of the stairs is the 1889 house which has a hallway leading to three bedrooms and a bathroom. At the end of the hallway is the entrance to the porch above the 1928 addition. The walls are of plaster and the trim and doors date to the 1896 remodeling. There are two bedrooms on the north side and a small

United States Department of the Interior
National Park Service

National Register of Historic Places Continuation Sheet

Section number 7 Page 6

Gerhart, Augustus and Augusta House
Hyde County, SD

bathroom from 1938. The south side has a large bedroom with a large closet. On the southeast end of the wing is a storage closet, in which one can see the burnt timbers from the fire.

To the west of the main stairs is the 1896 wing addition. One steps into a large room with a closet on the south wall and the two shed dormer windows on the north and south side. It has 1980 wood paneling and trim from 1923. Immediately to the north of the stairway entrance is a bathroom with a 1938 skylight. The west side of the wing is divided into two rooms. The south room has a door on the east and north walls, plus a window on the west wall that looks over the stairwell to another window. The north room has doors on the south, east, and west walls. The door on the west wall leads into the stairwell. The stairwell has two windows that face the outside.

There is also a non-contributing garage on the property that dates to the late 1920s. It is a rectangular plan, with the main entrance facing fourth street. It has clapboard siding and a hip tin roof with a gablet. The east facade, facing the house, has two 2/2 windows and a four panel door. The north facade has two large sliding board and batten doors. The west facade contains no bays. The south side, front facade, has two large board and batten doors, similar to the ones on the north side.

Though the house has undergone various renovations during its years, it still retains many features associated with the Gerharts residence. Many exterior windows are still on the 1889 and 1896 house from the time the Gerharts resided there. The 1896 addition still retains its exterior walls, plus many interior wall with only a few divisions. The door in the 1889 house with the oval pane is in good condition. In the 1896 wing, the door walls and trim date to the 1896 date when the Gerharts moved into the residence.

United States Department of the Interior
National Park ServiceNational Register of Historic Places
Continuation SheetSection number 8 Page 9Gerhart, Augustus and Augusta House
Hyde County, SD

Mr. Gerhart also participated in local government. Gus Gerhart served as county sheriff from 1895 to 1898.¹¹ He also helped with the physical plant of the county by providing a courthouse. In 1888, Mr. Gerhart constructed the Phoenix Hotel. The first county courthouse burned later that year and Mr. Gerhart rented out the hotel as the second county courthouse. The county rented the building until 1893, when they purchased the building from Mr. Gerhart for \$2,750.¹² This building (non-extant) served as the courthouse until 1912, when the county completed the present courthouse (NR 3/30/78).

On the state level, constituents in District 25, which served Hughes, Hyde, and Sully Counties, elected Gus Gerhart to the South Dakota House of Representatives as a Republican in 1900 and 1902. In his first term, he served on three committees: Education, Public Printing & Library, and Charitable Institutions. Mr. Gerhart introduced two House Bills which passed: #134 which provided for the expenses of insane patients and #220 which classified the kind and amount of printing and binding for the state of South Dakota.¹³ In his second term, he served on four committees: Irrigation and Drainage, Indian Affairs, Manufacture, and Temperance.¹⁴ He introduced two bills: House Bill #24 on witnessed instruments, which did not pass, and House Bill #140, which passed, provide that "the amount of insurance written on real property shall be conclusively be the true value thereof."¹⁵

Augusta Gerhart help create the social structure to the town of Highmore. She often entertained with large dinner parties for up to sixty guests. These parties usually made the front page of *the Highmore Herald*, the local newspaper. Augusta was also a member of the Eastern Star, the Rebeccas, and the Highmore Literary Club. Augusta held the Club functions at the home many times.

The Gerhart home was a meeting place for all in Highmore, not just prominent citizens. Hungry people were never turned away and many baskets of groceries were sent to needy families with no tag

¹¹ Ibid., 45.

¹² *Staying Power*, 74.

¹³ *Journal of the House of Representatives of the South Dakota Legislature: Seventh Session* (Pierre, SD: State Publishing Co., 1901), 616,1046.

¹⁴ J.E. Hipple, ed., *The South Dakota Legislative Manual, 1903* (Pierre, SD: State Publishing Co., 1903).

¹⁵ *Journal of the House of Representatives of the South Dakota Legislature: Eighth Session* (Pierre, SD: State Publishing Co., 1903), LX, LXXXVI.

United States Department of the Interior
National Park Service**National Register of Historic Places
Continuation Sheet**Section number 8 Page 10Gerhart, Augustus and Augusta House
Hyde County, SD

attached.¹⁶ The Minnie and Elmer Quirk continued the tradition of feeding anyone who came to their door and always cared for the needy.

The Gerhart home was also used for church services on Sundays, when the Episcopal minister arrived from Fort Thompson. Augusta, the daughter of an Episcopalian minister, had services in her home for at least six years, until evangelist G.W. Elliot came with a revival to town. After the revival, followers formed the Christian Church and built their chapel next to the Gerhart house.¹⁷ The Gerharts became founding members of the church.

The garage is considered a non-contributing structure, since it is not associated with the Gerharts, but with later residents.

The Augustus and Augusta Gerhart House is an important property in the history of Highmore and Hyde County. Though the home has suffered damage from a lightning strike in 1928, the 1889 house, plus the 1896 wing are still intact and retain features from when the Gerharts lived there and contributed to their community. The Gerhart House is one of the first permanent residences in Highmore and the only structure left associated with them. Gus and Augusta Gerhart contributed to the growth and viability of Highmore through social functions, commercial services, and political representation. The house is still locally known as the Gerhart House over 75 years after a person with the Gerhart name lived in the home. Though it is hard to assess the role in person or persons played in a community, the tangible link of the Gerhart name being associated with the house after so many years shows the significance Gus and Augusta had in the community.

¹⁶ "Pioneer Daughters Biographies, August Gerhart, 1977."

¹⁷ Ibid.

United States Department of the Interior
National Park Service

National Register of Historic Places Continuation Sheet

Section number 9 Page 11

Gerhart, Augustus and Augusta House
Hyde County, SD

X. BIBLIOGRAPHY

Deeds and Warrants of Hyde County, Book 15 (Highmore, SD: Hyde County).

Deeds and Warrants of Hyde County, Book 16 (Highmore, SD: Hyde County).

Hague, Douglas. Interviewed by Pat Lindemann, 1995.

Hawkinson, Lucille, daughter of Elmer Quirk. Interviewed by Pat Lindemann, 1995.

Highmore Herald (Highmore, South Dakota). 27 December 1903; 12 March 1915.

Hipple, J.E., ed. *The South Dakota Legislative Manual, 1903*. Pierre, SD: State Publishing Co., 1903.

Hyde County Bulletin (Highmore, South Dakota). 9 March 1889.

Hyde County Historical and Genealogical Society. *Hyde Heritage*. Highmore, SD: the Society; [Pierre, SD: State Publishing Co.], 1977.

Hyde County South Dakota Centennial Committee. *Staying Power*. Pierre, SD: State Publishing Co., 1977.

Legislative Research Council. "Historical Listing of South Dakota Legislators, November 1983." South Dakota State Historical Archives, Cultural Heritage Center, Pierre, South Dakota.

Massey, James C. and Shirley Maxwell. *House Styles in America*. New York: Penguin Group, 1996.

McAlester, Lee and McAlester, Virginia. *A Field Guide to American Houses*. New York: Alfred A. Knopf, Inc., 1984.

McDermott, Katherine. Interviewed by Pat Lindemann, 1995.

United States Department of the Interior
National Park Service

National Register of Historic Places Continuation Sheet

Section number 9 Page 12

Gerhart, Augustus and Augusta House
Hyde County, SD

Perkins, John B. *History of Hyde County, South Dakota: from its organization to the present time.* s.l.: s.n., 1908.

“Pioneer Daughters Biographies, August Gerhart, 1977.” TMs. South Dakota State Historical Archives, Cultural Heritage Center, Pierre, South Dakota.

Robinson, Doane. *Encyclopedia of South Dakota.* 1925.

Standard Atlas of Hyde County, South Dakota: including a plat book of the villages, cities, and townships of the county. Chicago: George A. Ogle & Co., 1911.

Journal of the House of Representatives of the South Dakota Legislature: Seventh Session. Pierre, SD: State Publishing Co., 1901.

Journal of the House of Representatives of the South Dakota Legislature: Eighth Session. Pierre, SD: State Publishing Co., 1903.

Straight, Mae. Interviewed by Pat Lindemann, 1995.

United States Department of the Interior
National Park Service

National Register of Historic Places Continuation Sheet

Section number 10 Page 13

Gerhart, Augustus and Augusta House
Hyde County, SD

X. GEOGRAPHICAL DATA

Verbal Boundary Description

Lots 18-20, Block 3, all of Parker Town Addition.

Boundary Justification

The nominated parcel contains on the property historically associated with Augustus and Augusta Gerhart.

United States Department of the Interior
National Park Service

National Register of Historic Places Continuation Sheet

Section number Photos Page 14

Gerhart, Augustus and Augusta House
Hyde County, SD

Property: Augustus and Augusta Gerhart House
 321 Iowa Street
 Highmore, Hyde County, South Dakota

Photos by: Pat Lindemann *
 Owner Gerhart House

 Brad Wolf +
 SD Historical Society

Date: July 1996 *
 May 1997 +

Negatives: South Dakota State Historical Society
 Pierre, SD

1. *Interior Detail - Second Floor Bathroom, facing north
2. *Interior Detail - Second Floor hallway trim detail
3. *Interior Detail - Main Staircase "V", facing north
4. *Interior Detail - Kitchen Hutch top, facing west
5. *Interior Detail - Kitchen Hutch bottom, facing west
6. *Interior Detail - Breakfast Nook, facing west
7. *Interior Detail - Second Floor Hallway, facing east
8. *Interior Detail - Main Staircase, facing west
9. *Interior Detail - Door from porch to living room, facing south
10. *Interior Detail - Fireplace in living room, facing east
11. *Interior Detail - Detail of main staircase, facing west
12. *Interior Detail - Light Fixture in living room

United States Department of the Interior
National Park Service

National Register of Historic Places Continuation Sheet

Section number Photos Page 15

Gerhart, Augustus and Augusta House
Hyde County, SD

13. *Interior Detail - Bathroom on first floor
14. +Exterior Detail - East (Main) facade, facing northwest
15. +Exterior Detail - North facade, facing southwest
16. +Exterior Detail - North facade, facing south
17. +Exterior Detail - West facade, facing southeast
18. +Exterior Detail - South facade, facing northeast
19. +Garage, Exterior Detail - South facade, facing north
20. +Garage, Exterior Detail - East facade, facing west
21. + Garage, Exterior Detail - facing southeast

United States Department of the Interior
National Park Service

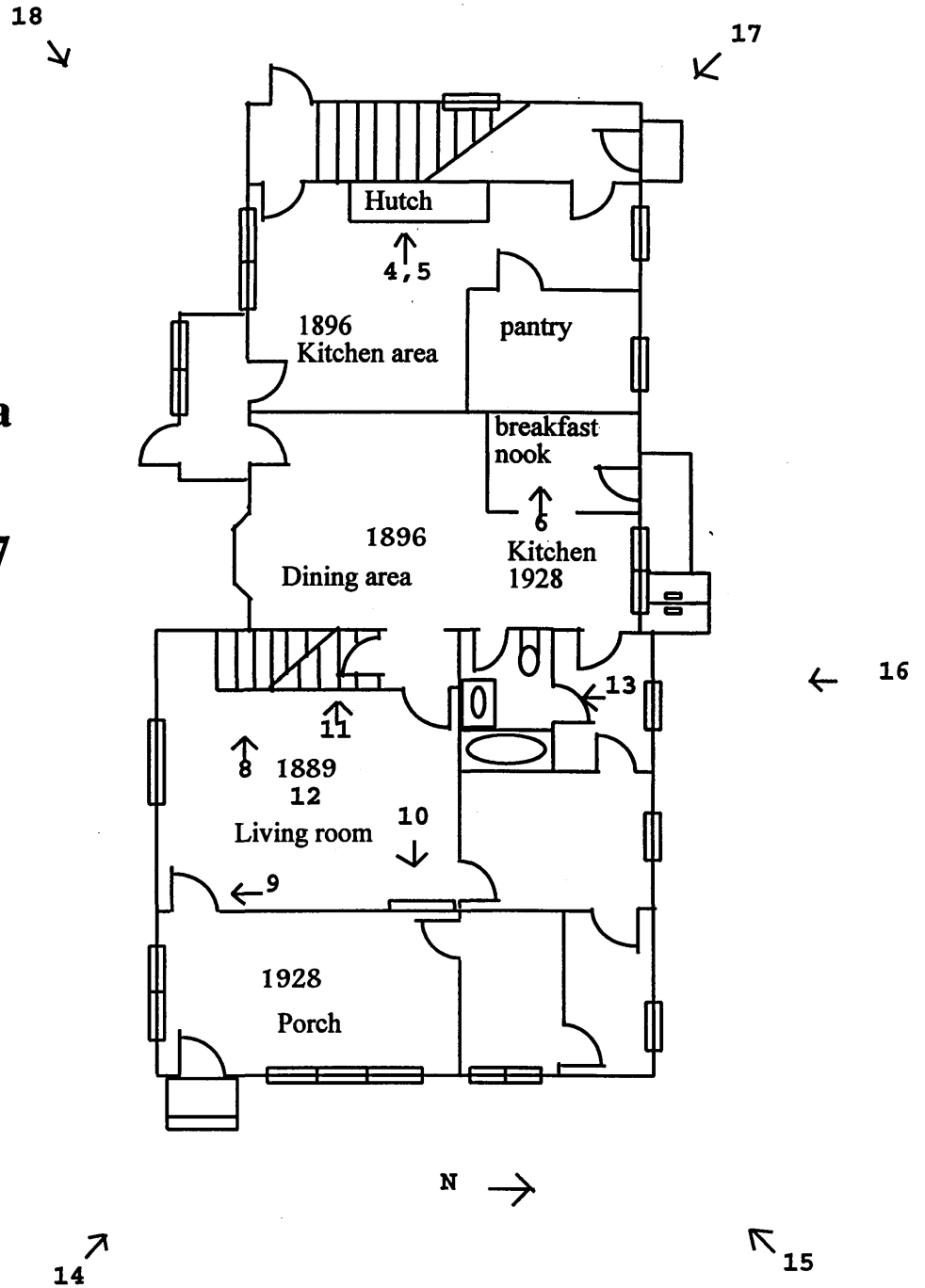
National Register of Historic Places Continuation Sheet

Section number Photos Page 16

Gerhart, Augustus and Augusta House
Hyde County, SD

Augustus and Augusta Gerhart House First Floor Plan - 1997

* not to scale



United States Department of the Interior
National Park Service

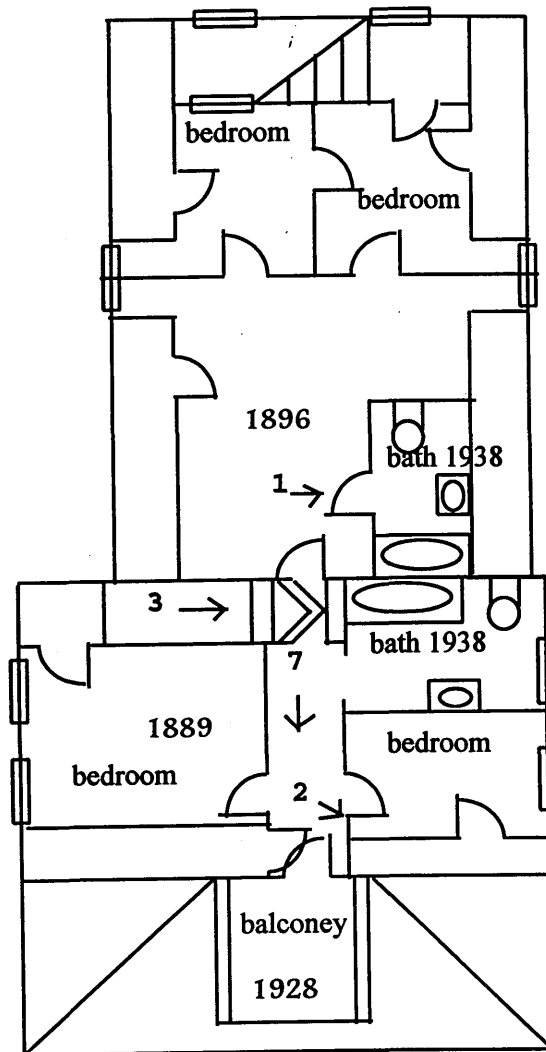
National Register of Historic Places Continuation Sheet

Section number Photos Page 17

Gerhart, Augustus and Augusta House
Hyde County, SD

Augustus and Augusta Gerhart House Second Floor Plan - 1997

* not to scale



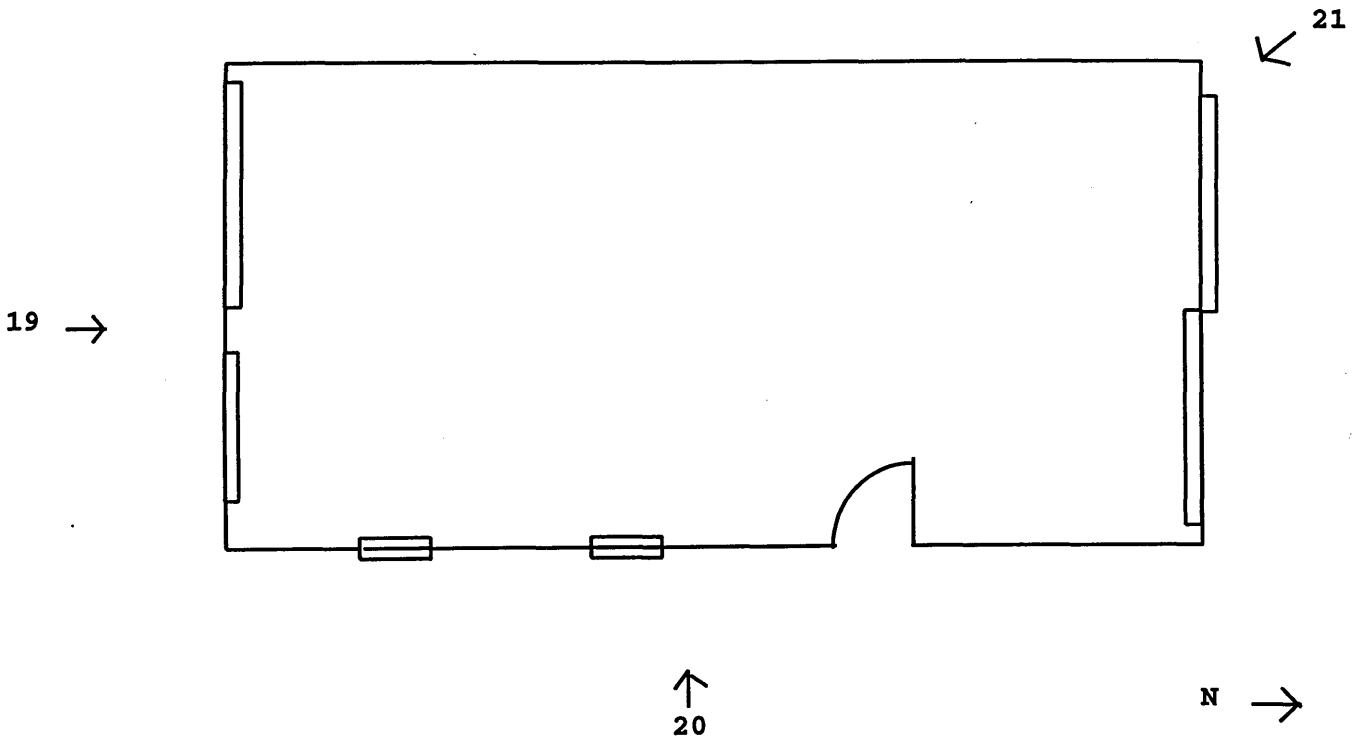
N →

United States Department of the Interior
National Park Service

National Register of Historic Places Continuation Sheet

Section number Photos Page 18

Gerhart, Augustus and Augusta House
Hyde County, SD



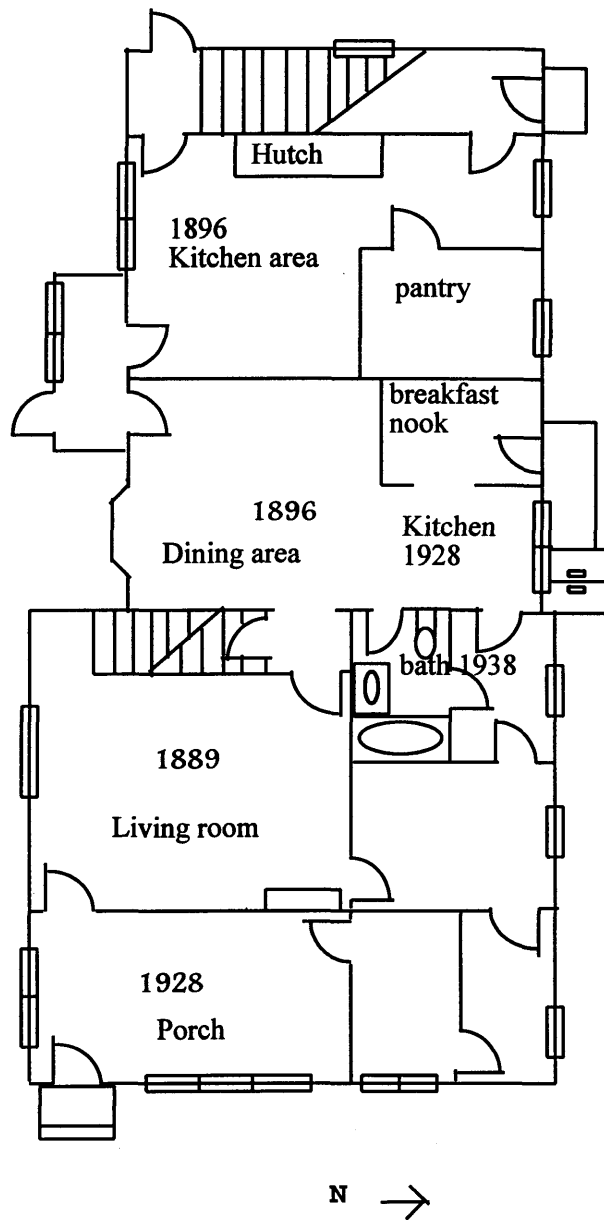
**Augustus and Augusta Gerhart House
Garage Floorplan
June 1997**

* not to scale

Augustus and Augusta Gerhart House

First Floor Plan - 1997

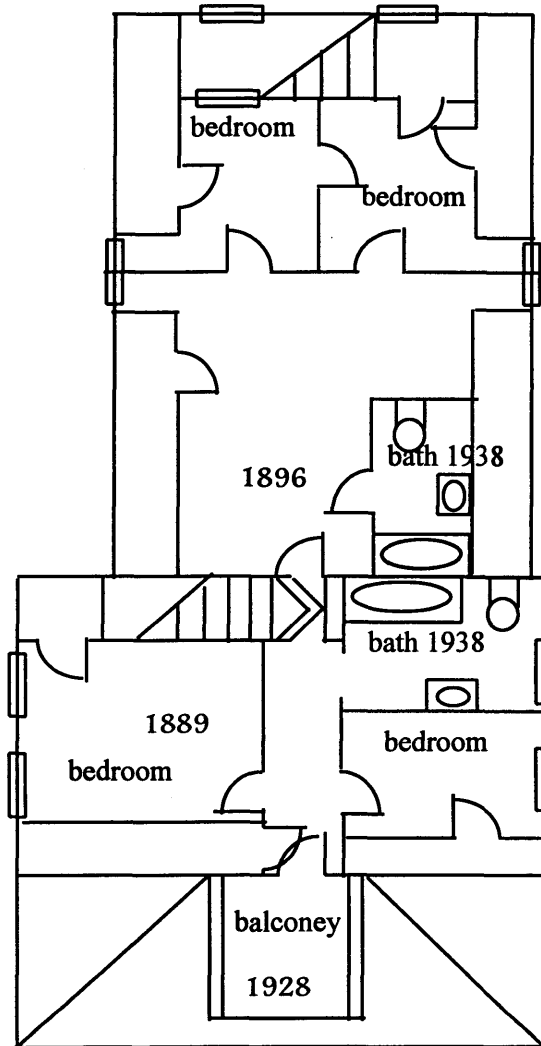
* not to scale



**Augustus and Augusta
Gerhart House**

Second Floor Plan - 1997

* not to scale

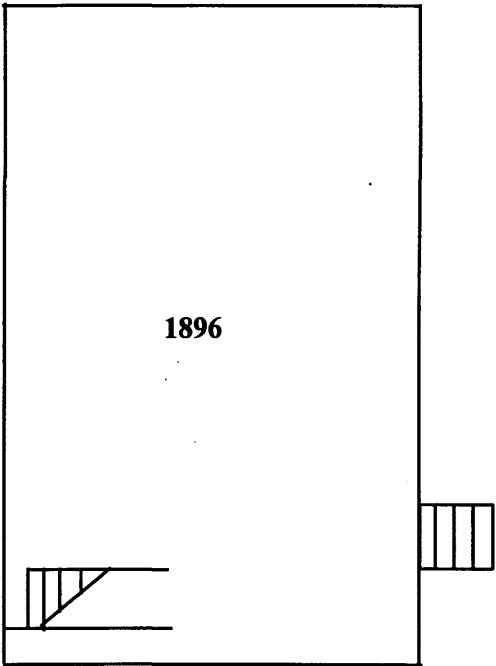


N →

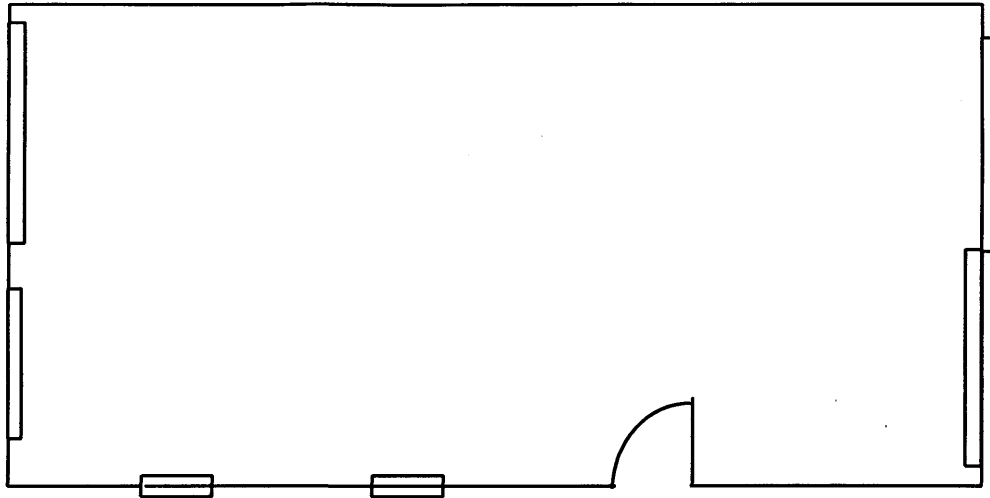
**Augustus and Augusta
Gerhart House**

Basement Plan - 1997

* not to scale



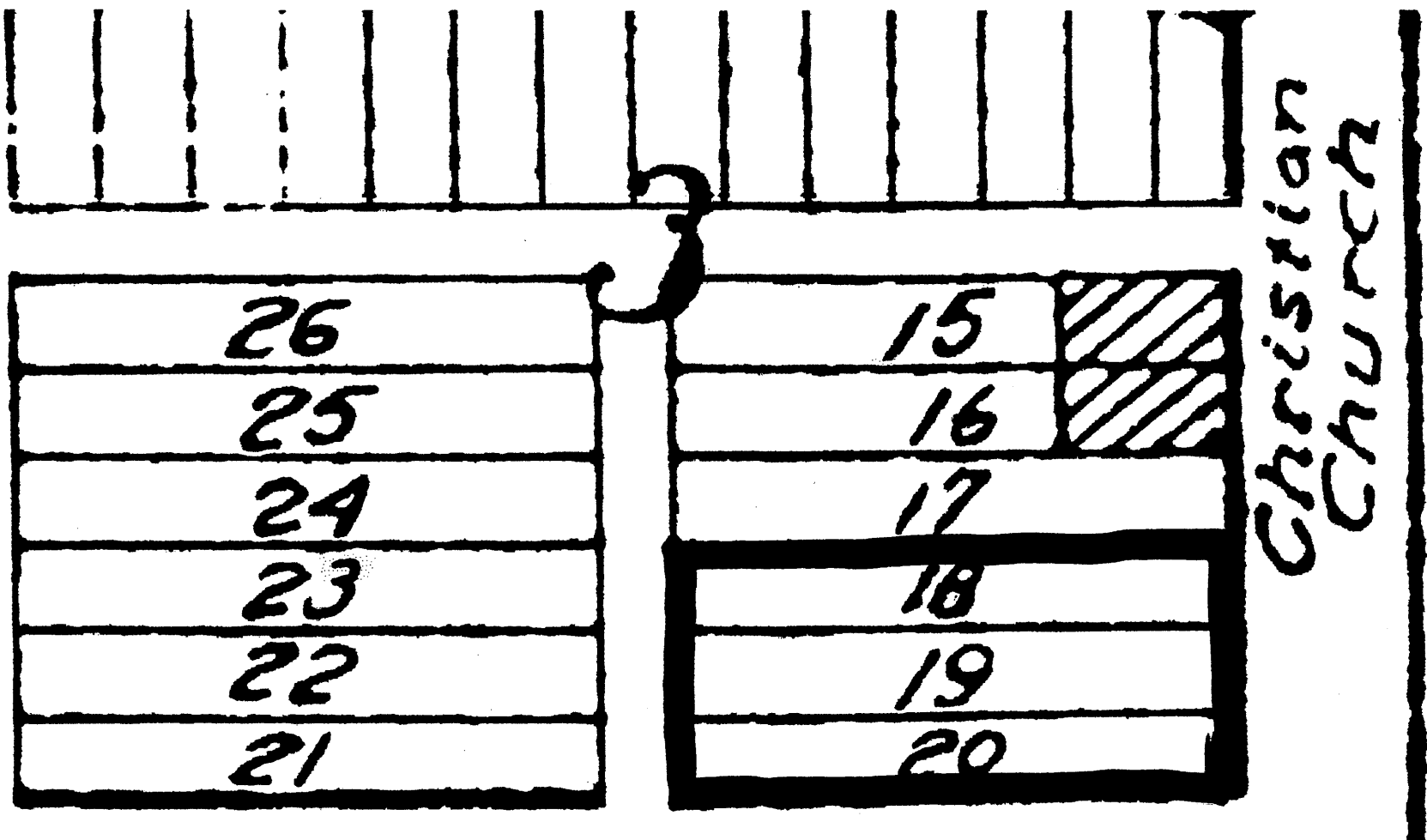
N →



N →

**Augustus and Augusta Gerhart House
Garage Floorplan
June 1997**

*** not to scale**



26

25

24

23

22

21

15

16

17

18

19

20

Christian
Church