



W. W. WOODS

ARM'S VACUUM  
& SEWING CENTER

SALE

Colorado West  
Tool, Sport & ...

Colorado West Tool, Sport & ...

W. W. WOODS

D&C

#1 Montrose Masonic Temple  
5 MN. 1682  
509-513 E. Main St.

Montrose County  
May 2003

Building facade

FAFF

511

jazzercise

jazzercise

PS J  
783

MONROSE  
CIRCLE  
MONTROSE



LAI'D BY THE  
M. W. GRAND LODGE  
A. F. & A. M.  
OF COLORADO.  
MARCH II, A. D. 1911.  
A. L. 5911.

#2 Montrose Masonic Temple  
5MN. 1682  
509-513 E. Main St.

Lodge entrance

Montrose County  
May 2003



MUSEUM OF HISTORY

ADAMS MUSEUM  
& SEWING CENTER

PFAFF

#3 Montrose Masonic Temple

5MN. 1682

509-513 E. Main St.

Building facade & west side

Montrose County

May 2003

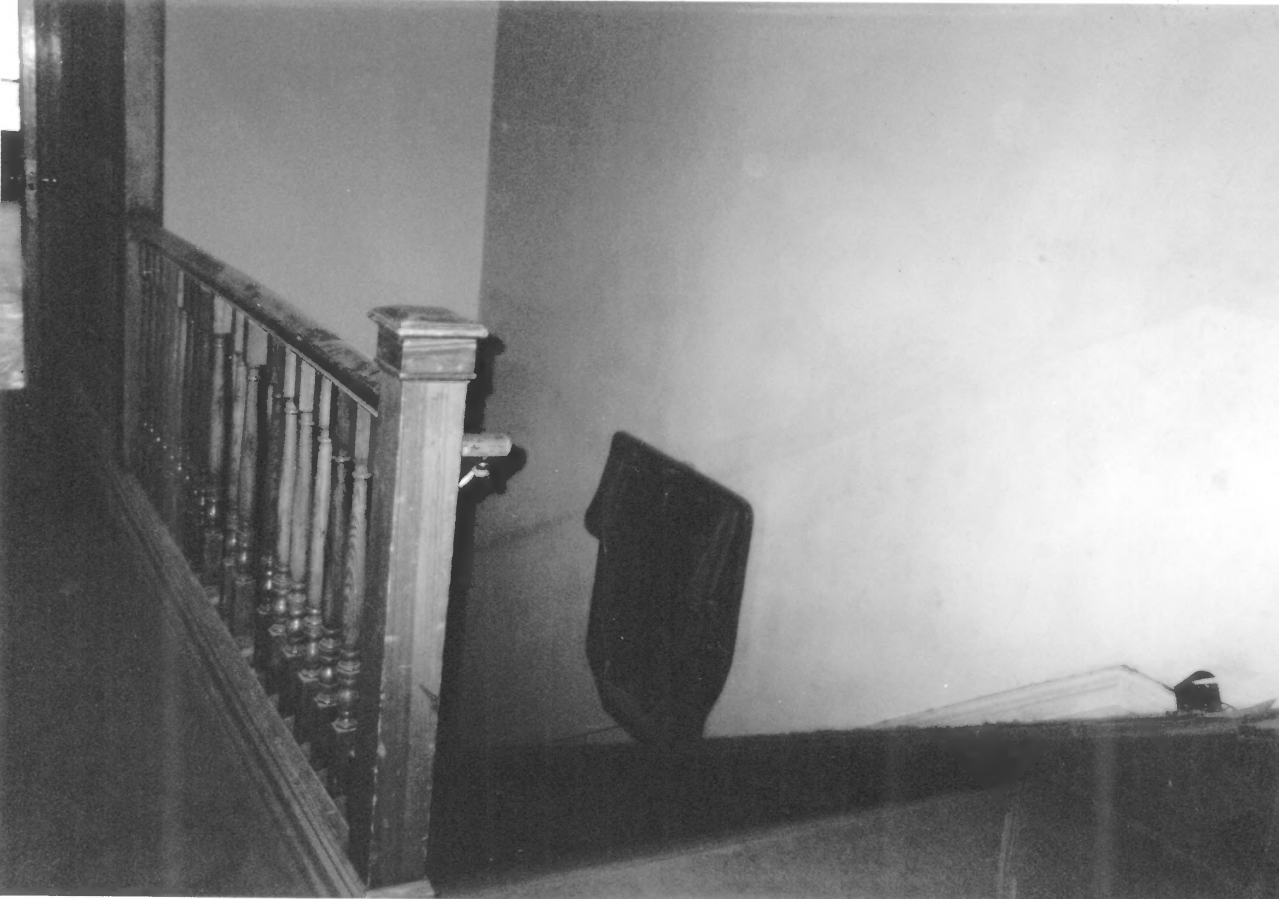


#4 Montrose Masonic Temple  
5 MN. 1682  
509-513 E. Main St.

Main Staircase

Montrose County  
May 2003





#5 Montrose Masonic Temple

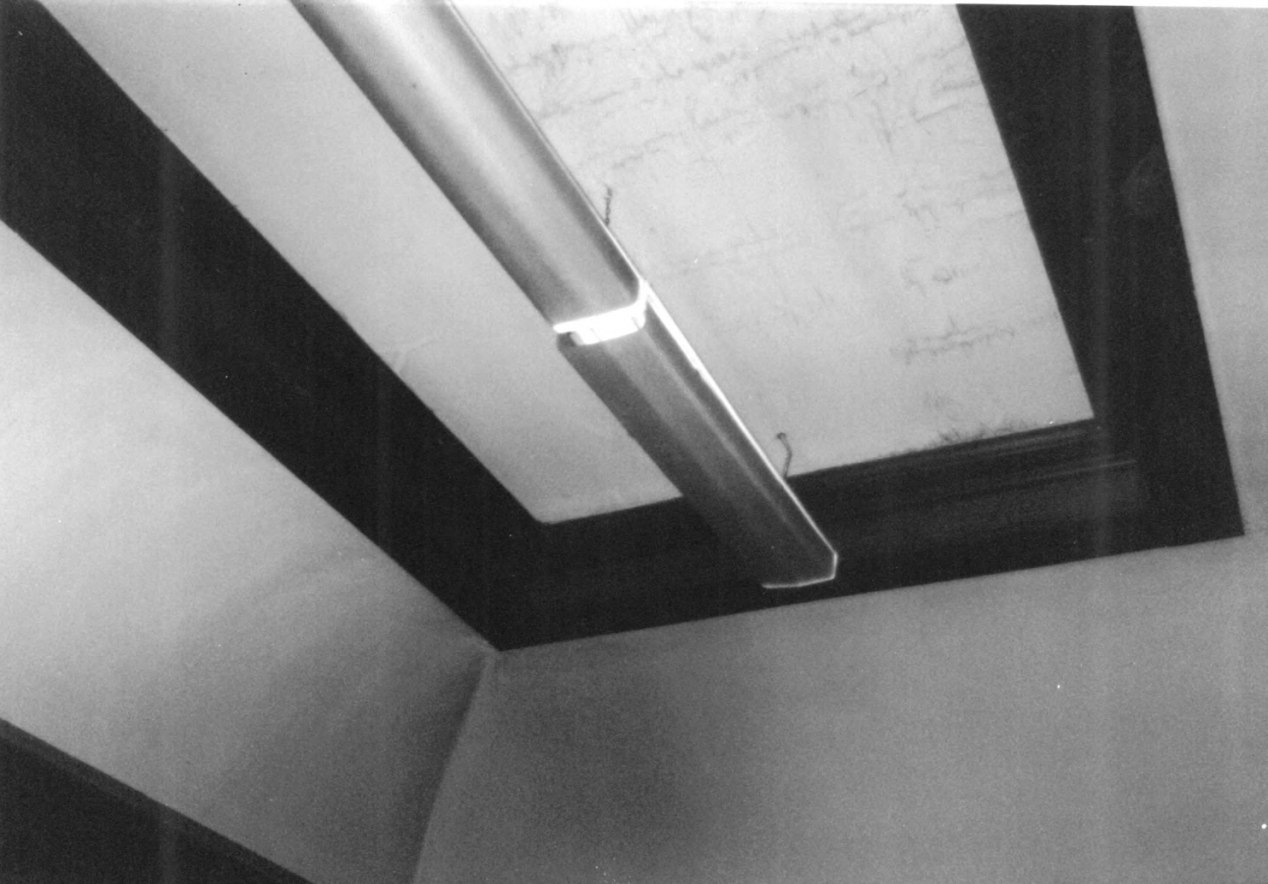
5 MIN. 1682

509-513 E. Main St.

Chair lift

Montrose County

May 2003



#6 Montrose Masonic Temple

5MN.1682

509-513 E. Main St.

Foyer lighting

Montrose County

May 2003



#7<sup>Pa</sup> Montrose<sup>Boys</sup> Masonic Temple  
5 MN. 1682  
509-513 E. Main St.

Montrose County  
May 2003

Foyer lighting in front hall



#8 Montrose Masonic Temple

5 MN. 1682

509-513 E. Main St.

Front hall from balcony

Montrose County

May 2003





#9 Montrose Masonic Temple

5 MN. 1682

509-513 E. Main St.

Kitchen

Montrose County

May 2003



#10 Montrose Masonic Temple

5 MN. 1682

509-513 E. Main St.

Stair to 3<sup>rd</sup> floor

Montrose County

May 2003



# 11 Montrose Masonic Temple  
5MN. 1682  
509-513 E. Main St.

Montrose County  
May 2003

Stained glass dome in Main Hall



#12/ Montrose Masonic Temple

5 MN. 1682

509-513 E. Main St.

Acanthus corbels in main Hall

Montrose County

May 2003





#13 Montrose Masonic Temple  
5 MN. 1682  
509-513 E. Main St.

Montrose County  
May 2003

Water damage in Main Hall



#14 Montrose Masonic Temple

5 MN. 1682

509-513 E. Main St.

Balcony in Main Hall

Montrose County

May 2003



#15 Montrose Masonic Lodge

5 MN. 1682

509-513 E. Main St.

Corner molding on 3<sup>rd</sup> floor

Montrose County

May 2003



#16 Montrose Masonic Lodge

5MN. 1682

509-513 E. Main St.

Montrose County

May 2003

Ventilation window on 3<sup>rd</sup> floor





#17 Montrose Masonic Temple  
5MN. 1682  
509-513 E. Main St.

3<sup>rd</sup> floor hallway

Montrose County  
May 2003



#18 Montrose Masonic Temple  
5 MN. 1682  
509-513 E. Main St.

Montrose County  
May 2003

3<sup>rd</sup> floor hallway - remodeled bathroom &  
stairs to remodeled room



#19 / Montrose Masonic Temple  
5 MN. 1682  
509-513 E. Main St.

Remodeled room

Montrose County  
May 2003



#20 Montrose Masonic Lodge  
5 MN. 1682  
509 - 513 E. Main St.

Montrose County  
May 2003

East side of building - rebricked areas



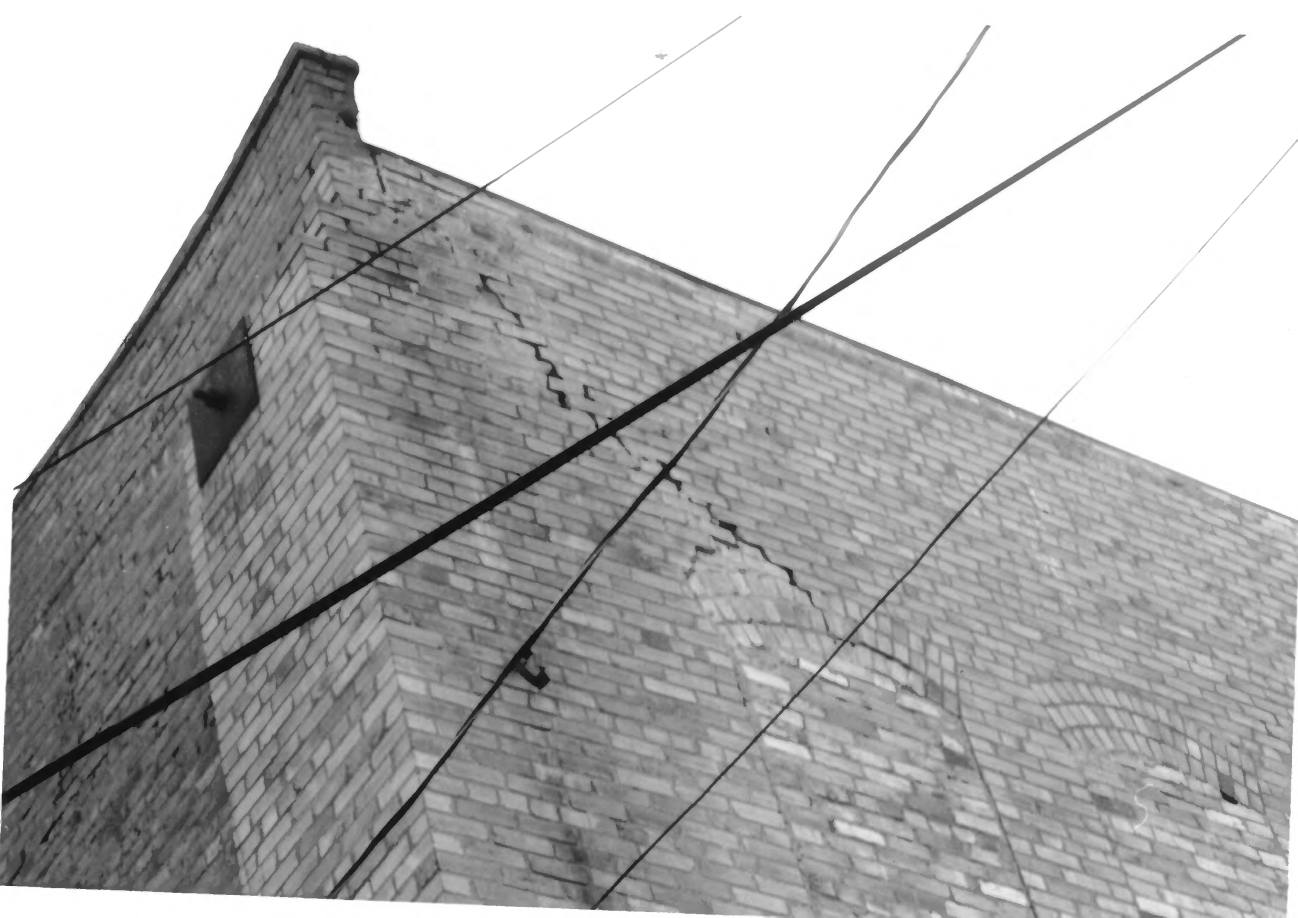


#21 Montrose Masonic Temple  
5 MIN. 1682  
509-513 E. Main St.

NE corner - rebricked area

Montrose County

May 2003



#22 Montrose Masonic Temple  
5 MN. 1682  
509-513 E. Main St.

Montrose County  
May 2003

Rear corner - masonry damage



#23 Montrose Masonic Temple

5MN.1682

509-513 E. Main St.

Rear corner - showing bricked  
in access for hearses.

Montrose County

May 2003