



22-10A

UNITED STATES DEPARTMENT OF THE INTERIOR  
NATIONAL PARK SERVICE

NATIONAL REGISTER OF HISTORIC PLACES

PROPERTY PHOTOGRAPH FORM

(Type all entries - attach to or enclose with photograph)

STATE <b>GEORGIA</b>	
COUNTY <b>BIBB</b>	
FOR NPS USE ONLY	
ENTRY NUMBER <b>71.5.13.0006</b>	DATE <b>5/27/71</b>

**1. NAME**

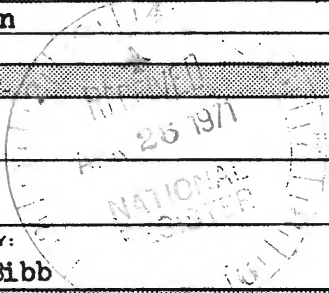
COMMON: **Home of Miss Louise Anderson**  
AND/OR HISTORIC: **Captain R. J. Anderson Home**

**2. LOCATION**

STREET AND NUMBER:  
**1730 West End Avenue**

CITY OR TOWN:  
**Macon**

STATE: <b>Georgia</b>	CODE <b>13</b>	COUNTY: <b>Bibb</b>	CODE <b>021</b>
--------------------------	-------------------	------------------------	--------------------



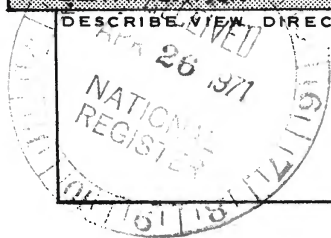
**3. PHOTO REFERENCE**

PHOTO CREDIT: **John J. McKay, Jr.**  
DATE OF PHOTO:  
NEGATIVE FILED AT: **Middle Georgia Historical Society, Inc.  
c/o Macon Coliseum  
Macon, Georgia 31201** Negative #22-10A

**4. IDENTIFICATION**

DESCRIBE VIEW, DIRECTION, ETC.  
**View of front of house from left side showing steep roof with gables.**

SEE INSTRUCTIONS





43-6A

UNITED STATES DEPARTMENT OF THE INTERIOR  
NATIONAL PARK SERVICE

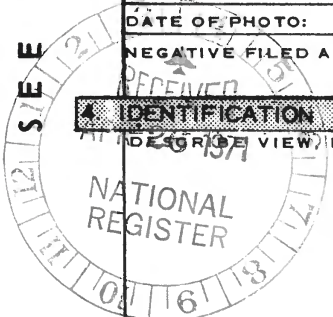
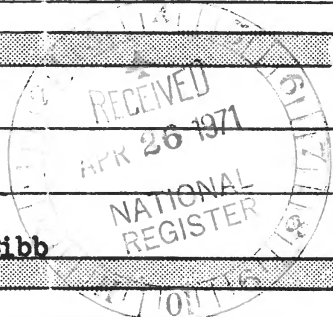
NATIONAL REGISTER OF HISTORIC PLACES  
PROPERTY PHOTOGRAPH FORM

(Type all entries - attach to or enclose with photograph)

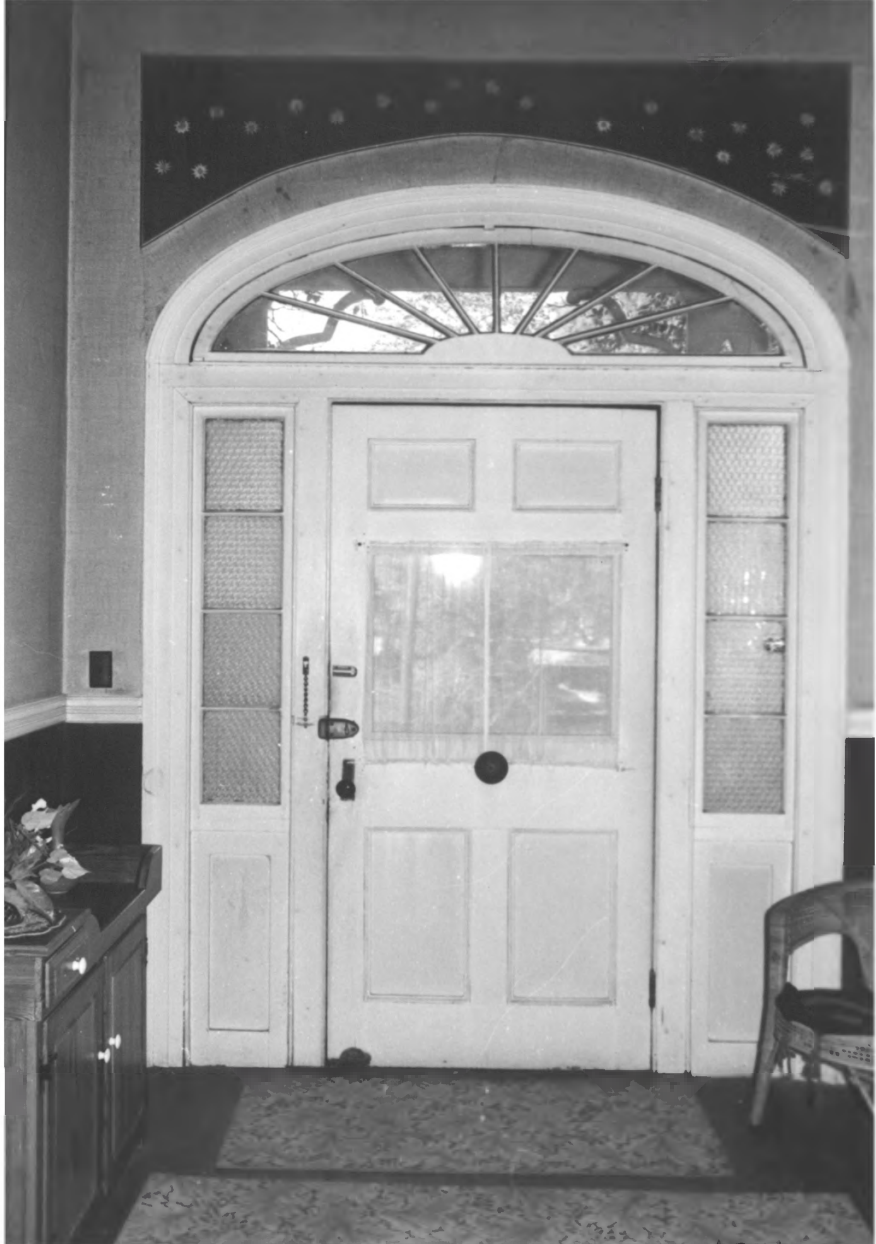
STATE <b>GEORGIA</b>	
COUNTY	
<b>BIBB</b>	
FOR NPS USE ONLY	
ENTRY NUMBER <b>71.5.13.0006</b>	DATE <b>5/27/71</b>

SEE INSTRUCTIONS

<b>1. NAME</b>			
COMMON:	<b>Home of Miss Louise Anderson</b>		
AND/OR HISTORIC:	<b>Captain R.J. Anderson Home</b>		
<b>2. LOCATION</b>			
STREET AND NUMBER:			
<b>1730 West End Avenue</b>			
CITY OR TOWN:			
<b>Macon</b>			
STATE:	CODE:	COUNTY:	CODE:
<b>Georgia</b>	<b>13</b>	<b>Bibb</b>	<b>021</b>
<b>3. PHOTO REFERENCE</b>			
PHOTO CREDIT:	<b>John J. McKay, Jr.</b>		
DATE OF PHOTO:	<b>March, 1971</b>		
NEGATIVE FILED AT:	<b>Middle Georgia Historical Society, Inc. c/o Macon Coliseum Macon, Georgia 31201</b>		
			<b>Negative # 43-6A</b>
<b>4. IDENTIFICATION</b>			
DESCRIBE VIEW, DIRECTION, ETC.			



View of front porch of Captain R.J. Anderson home showing the front door accented by framed transom and cut glass sidelights.



48-1019

UNITED STATES DEPARTMENT OF THE INTERIOR  
NATIONAL PARK SERVICE

NATIONAL REGISTER OF HISTORIC PLACES  
PROPERTY PHOTOGRAPH FORM

(Type all entries - attach to or enclose with photograph)

STATE <b>GEORGIA</b>	
COUNTY <b>BIBB</b>	
FOR NPS USE ONLY	
ENTRY NUMBER <b>71.5.13.0006</b>	DATE <b>5/27/71</b>

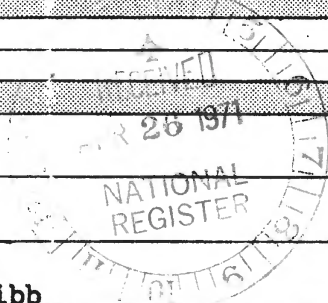
**1. NAME**

COMMON: **Home of Miss Louise Anderson**  
AND/OR HISTORIC: **Captain R.J. Anderson Home**

**2. LOCATION**

STREET AND NUMBER: **1730 West End Avenue**  
CITY OR TOWN: **Macon**  
STATE: **Georgia**

CODE	COUNTY:	CODE
<b>13</b>	<b>Bibb</b>	<b>021</b>



**3. PHOTO REFERENCE**

PHOTO CREDIT: **John J. McKay, Jr.**  
DATE OF PHOTO: **March, 1971**  
NEGATIVE FILED AT: **Middle Georgia Historical Society, Inc.  
c/o Macon Coliseum  
Macon, Georgia 31201**      **Negative # 43-10A**

**4. IDENTIFICATION**

DESCRIBE VIEW, DIRECTION, ETC.  
**Interior view of front door showing transom with fan tailed design and fancy design in the sideights.**

SEE INSTRUCTIONS



43-9A

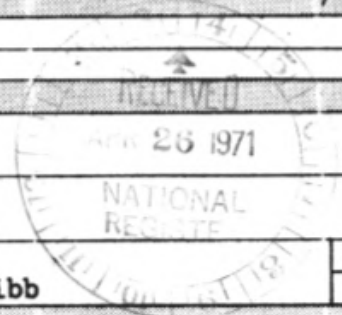
UNITED STATES DEPARTMENT OF THE INTERIOR  
NATIONAL PARK SERVICE

NATIONAL REGISTER OF HISTORIC PLACES  
PROPERTY PHOTOGRAPH FORM

(Type all entries - attach to or enclose with photograph)

STATE <b>GEORGIA</b>	
COUNTY <b>BIBB</b>	
FOR NPS USE ONLY	
ENTRY NUMBER <b>71,513,0006</b>	DATE <b>5/27/71</b>

<b>1. NAME</b>			
COMMON:	<b>Home of Miss Louise Anderson</b>		
AND/OR HISTORIC:	<b>Captain R.J. Anderson Home</b>		
<b>2. LOCATION</b>			
STREET AND NUMBER:	<b>1730 West End Avenue</b>		
CITY OR TOWN:	<b>Macon</b>		
STATE:	CODE	COUNTY:	CODE
<b>Georgia</b>	<b>13</b>	<b>Bibb</b>	<b>021</b>
<b>3. PHOTO REFERENCE</b>			
PHOTO CREDIT:	<b>John J. McKay, Jr.</b>		
DATE OF PHOTO:	<b>March, 1971</b>		
NEGATIVE FILED AT:	<b>Middle Georgia Historical Society, Inc. c/o Macon Coliseum Macon, Georgia 31201</b>		
			<b>Negative # 43-9A</b>
<b>4. IDENTIFICATION</b>			



DESCRIBE VIEW, DIRECTION, ETC.

Interior view of entrance hall facing the rear showing hall decorations and a Crusader door (cross at the top and open Bible at the bottom).

SEE INSTRUCTIONS





43-7A

NATIONAL REGISTER OF HISTORIC PLACES  
PROPERTY PHOTOGRAPH FORM

(Type all entries - attach to or enclose with photograph)

STATE <b>GEORGIA</b>	
COUNTY <b>BIBB</b>	
FOR NPS USE ONLY	
ENTRY NUMBER <b>91.5.13.0006</b>	DATE <b>5/27/71</b>

1. NAME

COMMON: **Home of Miss Louise Anderson**  
AND/OR HISTORIC: **Captain R.J. Anderson Home**

2. LOCATION

STREET AND NUMBER: **1730 West End Avenue**  
CITY OR TOWN: **Macon**

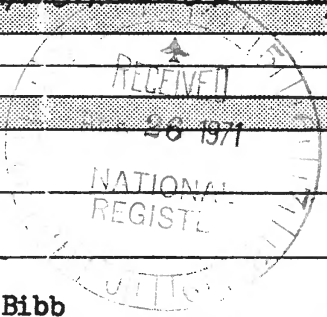
STATE: <b>Georgia</b>	CODE: <b>13</b>	COUNTY: <b>Bibb</b>	CODE: <b>021</b>
-----------------------	-----------------	---------------------	------------------

3. PHOTO REFERENCE

PHOTO CREDIT: **John J. McKay, Jr.**  
DATE OF PHOTO: **March, 1971**  
NEGATIVE FILED AT: **Middle Georgia Historical Society, Inc.  
c/o Macon Coliseum  
Macon, Georgia 31201** Negative # **43-7A**

4. IDENTIFICATION

DESCRIBE VIEW, DIRECTION, ETC.  
**Exterior view of front portico showing abutted boards,  
detail of ballisters, and floor length windows.**  
*balusters*



SEE INSTRUCTIONS