

PH0506818

UNITED STATES DEPARTMENT OF THE INTERIOR
NATIONAL PARK SERVICE

NATIONAL REGISTER OF HISTORIC PLACES INVENTORY -- NOMINATION FORM

FOR NPS USE ONLY

RECEIVED NOV 14 1977

DATE ENTERED DEC 1 1978

SEE INSTRUCTIONS IN *HOW TO COMPLETE NATIONAL REGISTER FORMS*
TYPE ALL ENTRIES -- COMPLETE APPLICABLE SECTIONS

1 NAMEHISTORIC Battery C *etc*

AND/OR COMMON

Graveyard Hill

2 LOCATION

STREET & NUMBER

Near Clark and York Streets

— NOT FOR PUBLICATION

CITY, TOWN

CONGRESSIONAL DISTRICT

Helena

— VICINITY OF

First

STATE

CODE

COUNTY

CODE

Arkansas

05

Phillips

107

3 CLASSIFICATION**CATEGORY**☐ DISTRICT☐ BUILDING(S)☐ STRUCTURE☒ SITE☐ OBJECT**OWNERSHIP**☒ PUBLIC☐ PRIVATE☐ BOTH**PUBLIC ACQUISITION**☐ IN PROCESS☐ BEING CONSIDERED**STATUS**☐ OCCUPIED☒ UNOCCUPIED☐ WORK IN PROGRESS**ACCESSIBLE**☐ YES: RESTRICTED☒ YES: UNRESTRICTED☐ NO**PRESENT USE**☐ AGRICULTURE☐ COMMERCIAL☐ EDUCATIONAL☐ ENTERTAINMENT☐ GOVERNMENT☐ INDUSTRIAL☐ MILITARY☐ MUSEUM☒ PARK☐ PRIVATE RESIDENCE☐ RELIGIOUS☐ SCIENTIFIC☐ TRANSPORTATION☐ OTHER:**4 OWNER OF PROPERTY**

NAME

City of Helena (Thad Kelly, Mayor)

STREET & NUMBER

City of Helena

CITY, TOWN

Helena

— VICINITY OF

STATE

Arkansas

5 LOCATION OF LEGAL DESCRIPTIONCOURTHOUSE,
REGISTRY OF DEEDS, ETC.

Clerk's Office

STREET & NUMBER

Phillips County Courthouse

CITY, TOWN

Helena

STATE

Arkansas

6 REPRESENTATION IN EXISTING SURVEYS

TITLE

DATE

☐ FEDERAL ☐ STATE ☐ COUNTY ☐ LOCALDEPOSITORY FOR
SURVEY RECORDS

CITY, TOWN

STATE

7 DESCRIPTION

CONDITION

☐ EXCELLENT
☒ GOOD
☐ FAIR

☐ DETERIORATED
☐ RUINS
☐ UNEXPOSED

CHECK ONE

☐ UNALTERED
☒ ALTERED

CHECK ONE

☒ ORIGINAL SITE
☐ MOVED DATE _____

DESCRIBE THE PRESENT AND ORIGINAL (IF KNOWN) PHYSICAL APPEARANCE

When constructed atop Graveyard Hill in 1863, Battery C consisted of earthen fortifications on the crest with a series of rifle pits along the western slope. Though the scene of some of the heaviest fighting during the Battle of Helena, the hilltop gives little evidence of its past use.

In 1930 a large portion of the east slope of Graveyard Hill was removed to build the Mississippi River levee at Helena. Though evidence of the earthen fortifications was visible for over 50 years, the natural elements have eroded from five to six feet of the crest of the hill. The grassy hilltop retains little evidence of its military history.

The hill now stands about one hundred feet high, considerably higher than the surrounding residential area. The ground cover consists of wild grasses, underbrush and some trees. The eastern edge overlooks the City of Helena, and in the distance, the Mississippi River.

The ten-acre site, including all of altered Battery C, has recently been donated to the City of Helena and will be developed as a park.

8 SIGNIFICANCE

PERIOD	AREAS OF SIGNIFICANCE -- CHECK AND JUSTIFY BELOW			
— PREHISTORIC	— ARCHEOLOGY-PREHISTORIC	— COMMUNITY PLANNING	— LANDSCAPE ARCHITECTURE	— RELIGION
— 1400-1499	— ARCHEOLOGY-HISTORIC	— CONSERVATION	— LAW	— SCIENCE
— 1500-1599	— AGRICULTURE	— ECONOMICS	— LITERATURE	— SCULPTURE
— 1600-1699	— ARCHITECTURE	— EDUCATION	<input checked="" type="checkbox"/> MILITARY	— SOCIAL/HUMANITARIAN
— 1700-1799	— ART	— ENGINEERING	— MUSIC	— THEATER
<input checked="" type="checkbox"/> 1800-1899	— COMMERCE	— EXPLORATION/SETTLEMENT	— PHILOSOPHY	— TRANSPORTATION
— 1900-	— COMMUNICATIONS	— INDUSTRY	— POLITICS/GOVERNMENT	— OTHER (SPECIFY)
		— INVENTION		

SPECIFIC DATES July 4, 1863

BUILDER/ARCHITECT

STATEMENT OF SIGNIFICANCE

On July 4, 1863, two of the most well-known battles of the Civil War were fought. While Union forces repelled the Confederates' northernmost advance at Gettysburg, Rebel troops at Vicksburg capitulated to Grant's army after a lengthy siege. The Confederate losses at both Gettysburg and Vicksburg foretold the eventual outcome of the war.

The coincidence of Union victories on Independence Day was made still more ironic by a third success in eastern Arkansas. The Battle of Helena was a futile attempt by Confederates to recapture the Mississippi River town of Helena from Federal occupying forces. Like their comrades in Mississippi and Pennsylvania, the Confederate forces in Arkansas also ended the day in defeat.

During the siege of Vicksburg, Grant's Union army was supplied via the Mississippi River. If the Confederates could have retaken a river stronghold above Vicksburg they would have been able to harass Federal supply shipments to the besieged city. Hence, the primary objective of the attack on Helena was to relieve Vicksburg.

Union forces, commanded by Major General Benjamin Prentiss, had taken advantage of Helena's topography by building a series of fortifications on hills surrounding the city. Four hilltop batteries overlooked each of the roads leading into town.

Because of rumors that Confederate forces were on the march, the four batteries were strengthened in late June by the construction of a series of rifle entrenchments and abatis in front of each battery. Other defensive measures instituted in late June included the sounding of reveille at 2:30 a.m. to prevent being caught unaware, felling many trees to obstruct the principal roads leading into town, and stationing a Federal timber-clad, the "Tyler", along the Helena waterfront.

By July 3, the Rebels had moved to within five miles of Helena. That afternoon Confederate commander Lieutenant General Theophilus H. Holmes met with his subordinate officers to explain the order of battle. Simultaneous attacks were to be launched against each of the four batteries. Once these fortifications were captured, the city was to be occupied. With almost twice the number of Union defenders, the Confederates fully expected to retake Helena; however, their own errors along with the strong Federal fortifications, made victory unattainable.

9 MAJOR BIBLIOGRAPHICAL REFERENCES

- Bearss, Edwin C. "The Battle of Helena, July 4, 1863." Arkansas Historical Quarterly, XX (Autumn, 1961), 259-297.
- Evans, Clement A., ed. Confederate Military History, Vol. X. Atlanta: Confederate Publishing Company, 1899.
- Crisler, E. T., Jr. The Battle of Helena. Helena, Arkansas: Helena Centennial Association, 1963.

10 GEOGRAPHICAL DATA

ACREAGE OF NOMINATED PROPERTY 10 acres

UTM REFERENCES

A

1	5
---	---

7	2	0	8	2	5
---	---	---	---	---	---

3	8	2	2	7	7	5
---	---	---	---	---	---	---

ZONE EASTING NORTHING

B

--	--

--	--	--	--	--	--

--	--	--	--	--	--	--	--

ZONE EASTING NORTHING

VERBAL BOUNDARY DESCRIPTION

LIST ALL STATES AND COUNTIES FOR PROPERTIES OVERLAPPING STATE OR COUNTY BOUNDARIES

STATE	CODE	COUNTY	CODE
STATE	CODE	COUNTY	CODE

11 FORM PREPARED BY

NAME / TITLE

Dianna Kirk, Historian

ORGANIZATION

Arkansas Historic Preservation Program

STREET & NUMBER

300 West Markham

CITY OR TOWN

Little Rock

DATE

3-9-76

TELEPHONE

501-371-1639

STATE

Arkansas

12 STATE HISTORIC PRESERVATION OFFICER CERTIFICATION

THE EVALUATED SIGNIFICANCE OF THIS PROPERTY WITHIN THE STATE IS:

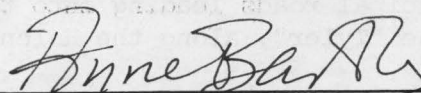
NATIONAL ____

STATE X

LOCAL ____

As the designated State Historic Preservation Officer for the National Historic Preservation Act of 1966 (Public Law 89-665), I hereby nominate this property for inclusion in the National Register and certify that it has been evaluated according to the criteria and procedures set forth by the National Park Service.

STATE HISTORIC PRESERVATION OFFICER SIGNATURE Anne Bartley



TITLE

State Historic Preservation Officer

DATE

3-9-76

FOR NPS USE ONLY

I HEREBY CERTIFY THAT THIS PROPERTY IS INCLUDED IN THE NATIONAL REGISTER

DIRECTOR, OFFICE OF ARCHEOLOGY AND HISTORIC PRESERVATION

ATTEST: Bill Laboriel

KEEPER OF THE NATIONAL REGISTER

DATE

12/1/78

KEEPER OF THE NATIONAL REGISTER

DATE

Nov 30, 1978

UNITED STATES DEPARTMENT OF THE INTERIOR
NATIONAL PARK SERVICE

**NATIONAL REGISTER OF HISTORIC PLACES
INVENTORY -- NOMINATION FORM**

FOR NPS USE ONLY

RECEIVED

NOV 14 1977

DATE ENTERED

DEC 1 1978

CONTINUATION SHEET

ITEM NUMBER 8 PAGE 1

Because the roads leading into Helena had been barricaded with felled trees, the Confederates, unprepared for this obstructionist tactic, left their artillery behind. Another costly Confederate mistake was a misunderstanding among the subordinate generals as to the exact hour to begin the attack. Poor communications and poor timing hampered the Confederates throughout the morning.

Of the four Union batteries constructed for the defense of Helena, two have completely disappeared, one has been greatly altered, and one remains intact. (The latter, Battery D, is the southernmost fortification, and was added to the National Register in 1974.) The altered earthen fortress, Battery C, has been reduced in size, but remains an open hillside with trees and shrubbery. Its special significance lies in the fact that it was the only Union battery to be captured during the Confederate assault on Helena.

Like the other batteries, Battery C consisted of earthen fortifications on a hilltop overlooking one of the roads leading into Helena. Rifle entrenchments were constructed along the western slopes of each hillside, with a timber abatis below the rifle pits. Located on Graveyard Hill, Battery C overlooked the Lower St. Francis Road as it approached Helena from the west. Defending Battery C was the 33rd Missouri Infantry under the direction of Brigadier General Frederick Salomon and Major General Benjamin M. Prentiss.

Just after midnight on July 4, 1863, the Confederate march on Helena commenced. By daybreak three of the Rebel units were in position and poised for attack; however, the fourth column, commanded by General Sterling Price, had halted about a mile and a half from Helena and waited until daylight to resume their march. The left and right Union flanks were attacked at daylight, but Battery C, the center of the Union line, was left free to support the other batteries in the early part of the battle. About an hour after the battle commenced, Price's men, split into two brigades led by Generals McRae and Parsons, finally joined the attack with their belated assault on Battery C.

The Confederate storm overwhelmed the Union defense and Battery C was taken; however, the retreating Federals found time to spike and render useless the important guns. The Confederate commanders ordered their artillery, left behind due to the obstructed roads, to be brought to Battery C immediately. However, before the guns reached the front, both the battery and the battle were lost.

UNITED STATES DEPARTMENT OF THE INTERIOR
NATIONAL PARK SERVICE

**NATIONAL REGISTER OF HISTORIC PLACES
INVENTORY -- NOMINATION FORM**

FOR NPS USE ONLY

RECEIVED NOV 14 1977

DATE ENTERED

DEC 1 1978

CONTINUATION SHEET

ITEM NUMBER 8

PAGE 2

When the Confederates carried Graveyard Hill, Union General Prentiss ordered the guns of the three other batteries and of the gunboat Tyler to be focused on Battery C. A new Union defense line was formed by General Salomon about 250 yards east of the crest of Graveyard Hill.

Under heavy fire the Confederate commanders gave several conflicting orders. Some of the troops were sent to assist the Confederate attack on nearby Battery D, others rushed down the east slope to continue the attack to Fort Curtis, the Union garrison, and a third group fought to hold the captured works atop Graveyard Hill. The attack on Fort Curtis was a complete failure, and the reinforcement of the troops attacking Battery D was insufficient to assure their success. At 10:30 a.m. General Holmes ordered a general withdrawal of the Confederate forces.

In his official report General Prentiss described the Confederate capture of Battery C as follows:

For four hours the battle raged furiously, the enemy gaining little, if any, advantage. Now, however, the attack in front became more furious; the enemy covered every hill-top, swarmed in every ravine, but seemed to be massing his force more particularly against Battery C....Twice they were repulsed, but the third time, exhibiting a courage and desperation rarely equaled, they succeeded in driving my small force at the point of the bayonet and capturing the battery.¹

However, within a short time the Union barrage forced the Confederates to retreat, and Battery C was retaken by the Federals. General Prentiss closed his report of the battle by writing, "I am happy to say that the attempt to haul down the Stars and Stripes, on the Fourth of July, was an ignominious failure."²

As an important Civil War battle site in Arkansas, Battery C marked the only Confederate success during the Battle of Helena. Yet its final fate on July 4, 1863, exemplified the fate of the Confederacy and the future of the Union.

Though somewhat altered when a portion of its eastern slope was removed to help build the Mississippi River levee in the 1930's, the site of Battery C is still located on an undeveloped Helena hilltop whose base has changed little. The entire site has recently been donated to the City of Helena and will be developed as a park. Located near Battery D with its earthen fortifications still evident, the Battery C site is a constant reminder of the city's military past.

UNITED STATES DEPARTMENT OF THE INTERIOR
NATIONAL PARK SERVICE

**NATIONAL REGISTER OF HISTORIC PLACES
INVENTORY -- NOMINATION FORM**

FOR NPS USE ONLY

RECEIVED NOV 14 1977

DATE ENTERED

DEC 1 1978

CONTINUATION SHEET

ITEM NUMBER 8 PAGE 3

Footnotes:

1. The War of the Rebellion: A Compilation of the Official Records of the Union and Confederate Armies. (Washington, D. C.: Government Printing Office, 1880-1901), Series I, Vol. XXII, p. 388.

2. The War of the Rebellion: A Compilation of the Official Records of the Union and Confederate Armies. (Washington, D. C.: Government Printing Office, 1880-1901), Series I, Vol. XXII, p. 389.

UNITED STATES DEPARTMENT OF THE INTERIOR
NATIONAL PARK SERVICE

**NATIONAL REGISTER OF HISTORIC PLACES
INVENTORY -- NOMINATION FORM**

OVERA

FOR NPS USE ONLY

RECEIVED

APR 25 1978

DATE ENTERED

DEC 1 1978

CONTINUATION SHEET

ITEM NUMBER 8

PAGE 4

Although the original physical integrity of Battery C has been altered, the site retains historic significance as the only Confederate victory in the Battle of Helena. The site of Battery C is a landmark concerned with the city's most remembered point in history. Helena's strong historical awareness stems from its involvement in the Civil War. Well studied by local organizations, the events in the Battle of Helena markedly indicate the significance of both Battery C and D in the history of the Mississippi River town.

THE NATIONAL REGISTER OF HISTORIC PLACES

DATE REC'D APR 24 1978

INDIVIDUAL RESPONSE (ATTACHED)

INFORMATIVE MATERIAL SENT

TELEPHONE CALL (ATTACHED)

DATE ACTION TAKEN

INITIALS

UNITED STATES DEPARTMENT OF THE INTERIOR
NATIONAL PARK SERVICE

**NATIONAL REGISTER OF HISTORIC PLACES
INVENTORY -- NOMINATION FORM**

FOR NPS USE ONLY

RECEIVED NOV 14 1977

DATE ENTERED

DEC 1 1978

CONTINUATION SHEET

ITEM NUMBER 9

PAGE 1

Scott, Robert N., ed. A Compilation of the Official Records of the Union and Confederate Armies. Washington, D. C.: Government Printing Office, 1888.

The War of the Rebellion: A Compilation of the Official Records of the Union and Confederate Armies, Series I, Vol. XXII. Washington, D. C.: Government Printing Office, 1880-1901.

UNITED STATES DEPARTMENT OF THE INTERIOR
NATIONAL PARK SERVICE

**NATIONAL REGISTER OF HISTORIC PLACES
INVENTORY -- NOMINATION FORM**

FOR NPS USE ONLY	
RECEIVED	NOV 20 1978
DATE ENTERED	DEC 1 1978

CONTINUATION SHEET

ITEM NUMBER 10 PAGE 1

UTM Reference - Battery C, Helena, Phillips County, Arkansas

Acerage- 10 acres

Quadrangle Name- Latour, Ark.-Miss.

Quadrangle Scale- 1:62500

(A) 15/ 3822 900 Northing
15/ 720 925 Easting

(B) 15/ 3822 700 Northing
15/ 720 925 Easting

(C) 15/ 3822 700 Northing
15/ 720 725 Easting

(D) 15/ 3822 825 Northing
15/ 720 725 Easting

UNITED STATES DEPARTMENT OF THE INTERIOR
NATIONAL PARK SERVICE

**NATIONAL REGISTER OF HISTORIC PLACES
INVENTORY -- NOMINATION FORM**

FOR NPS USE ONLY

RECEIVED

DATE ENTERED

NOV 20 1978

DEC 1 1978

CONTINUATION SHEET

ITEM NUMBER 10 PAGE 2

Verbal Boundary Description

That part of Lot 16 of the Eli J. Lewis Division to the City of Helena, Phillips County, Arkansas Described as follows:

Commencing at the NE corner of said Lot # 16 thence running west along the North boundary line of said lot 301 feet to the East boundary line of lot # 17 of the same division; thence south along the east boundary line of said lot # 17 to the SE corner of said lot # 17; thence west along the division line between lots # 16 and #17 49 feet; thence south in a line parallel with the west boundary line of lot # 16 279 feet and 7 inches; thence east in a line parallel with south boundary of said lot # 16 350 feet to east boundary line of said lot # 16; thence north along east boundary line of said lot # 16 324 feet and 7 inches to the point of beginning.

Property

Battery C Site

State

Ark.

Working Number

11.14.77.1862

78000615

TECHNICAL

Photos

3

Maps

1

10 acres require rectangle

CONTROL

pl

Rec'd 11-20

Sheffy

11.15.77

Since this has been greatly altered & best preserved battery of 4 is already on

HISTORIAN

Reject
Franklin
2.22.78

Seems to be greatly altered. Some inconsistencies in how much of Battery is still extant. Call - possibly reject since best preserved, neighboring battery already on register. Boundary does not seem justified. 10 acres?

ARCHITECTURAL HISTORIAN

Reject

Bravham
12.21.77

As part of 1 nomination for all earthworks surrounding Helena - this might be acceptable, but not this way. First battery nomination indicated that it would be the only one.

ARCHEOLOGIST

Sheffy

2.23.78

4-25-78 Although new information is not especially dramatic - I am willing to consider. I would take this as part of original nomination - discontinuous areas. So - I am not sure it is critical to send this back for that to happen. Openness & billtop

OTHER

Sheffy

4-25-78 accept

exposure may constitute enough integrity. Other Battery is cut off by a housing development. Site being reviewed. Inventory Review

HAER

Inventory

Review

If this can be treated as an amendment to D.C. - accept Bravham 4.28.78

See attached sheet. (Sheffy)

REVIEW UNIT CHIEF

Accept
Leborich

11/30/78

The ~~conten~~ additional material establishes the historical importance of this site and I am satisfied with integrity as highlighted, & therefore appropriate site for battery.

BRANCH CHIEF

KEEPER

National Register Write-up

Send-back

Entered

DEC 1 1978

Federal Register Entry

Re-submit

INT:2106-74



Battery C, Helena
Phillips Co., Arkansas

Hilltop, viewed from the south

DEC 1 1978

Form No. 10-301a
(Rev. 10-74)

UNITED STATES DEPARTMENT OF THE INTERIOR
NATIONAL PARK SERVICE

NATIONAL REGISTER OF HISTORIC PLACES
PROPERTY PHOTOGRAPH FORM

FOR NPS USE ONLY

RECEIVED

NOV 14 1977

DEC 1 1978

DATE ENTERED

SEE INSTRUCTIONS IN *HOW TO COMPLETE NATIONAL REGISTER FORMS*
TYPE ALL ENTRIES -- ENCLOSE WITH PHOTOGRAPH

1 NAME

HISTORIC

Battery C

AND/OR COMMON

2 LOCATION

CITY, TOWN

Helena

____ VICINITY OF

COUNTY

Phillips

STATE

Arkansas

3 PHOTO REFERENCE

PHOTO CREDIT

Thomas E. Tappan

DATE OF PHOTO 1976

NEGATIVE FILED AT

Arkansas Historic Preservation Program

4 IDENTIFICATION

DESCRIBE VIEW, DIRECTION, ETC. IF DISTRICT, GIVE BUILDING NAME & STREET

Battery C hilltop, viewed from south

PHOTO NO.

1



Battery C, Helena
Phillips Co., Arkansas

view from top of battery, looking northeast across the city

DEC 1 1978

#2

Form No. 10-301a
(Rev. 10-74)

UNITED STATES DEPARTMENT OF THE INTERIOR
NATIONAL PARK SERVICE

NATIONAL REGISTER OF HISTORIC PLACES
PROPERTY PHOTOGRAPH FORM

FOR NPS USE ONLY

RECEIVED

NOV 14 1977

DATE ENTERED

DEC 1 1978

SEE INSTRUCTIONS IN *HOW TO COMPLETE NATIONAL REGISTER FORMS*
TYPE ALL ENTRIES -- ENCLOSE WITH PHOTOGRAPH

1 NAME

HISTORIC

Battery C

AND/OR COMMON

2 LOCATION

CITY, TOWN

Helena

____ VICINITY OF

COUNTY

Phillips

STATE

Arkansas

3 PHOTO REFERENCE

PHOTO CREDIT

Thomas E. Tappan

DATE OF PHOTO 1976

NEGATIVE FILED AT

Arkansas Historic Preservation Program

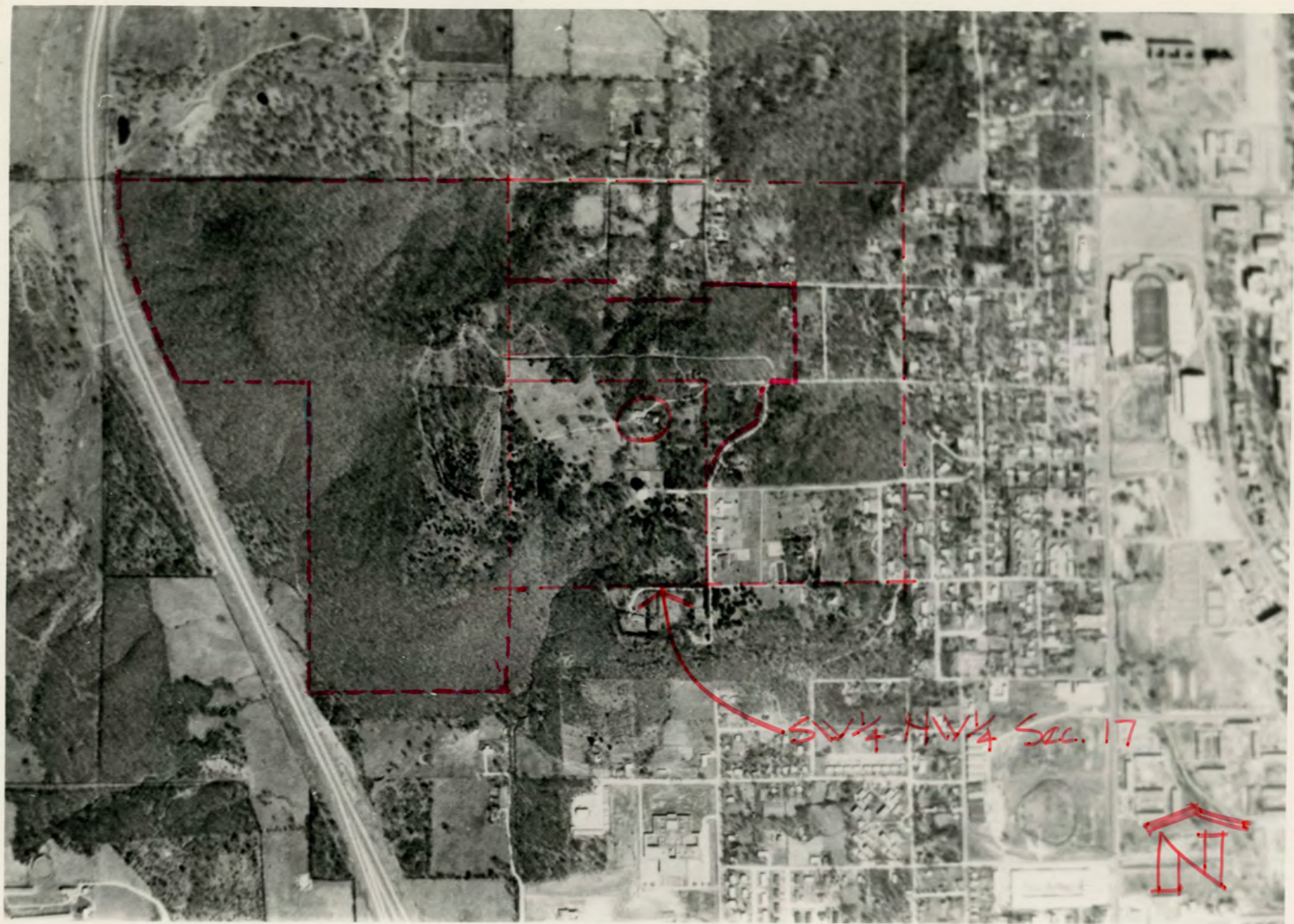
4 IDENTIFICATION

DESCRIBE VIEW, DIRECTION, ETC. IF DISTRICT, GIVE BUILDING NAME & STREET

View from top of Battery C, looking northeast across the city.

PHOTO NO.

2



SW 1/4 NW 1/4 Sec. 17

DEC 1 1978

UNITED STATES DEPARTMENT OF THE INTERIOR
NATIONAL PARK SERVICE

**NATIONAL REGISTER OF HISTORIC PLACES
PROPERTY MAP FORM**

FOR NPS USE ONLY

RECEIVED NOV 14 1977

DATE ENTERED

SEE INSTRUCTIONS IN *HOW TO COMPLETE NATIONAL REGISTER FORMS*
TYPE ALL ENTRIES -- ENCLOSE WITH MAP

1 NAME

HISTORIC

Battery C

AND/OR COMMON

Graveyard Hill

2 LOCATION

CITY, TOWN

Helena

____ VICINITY OF

COUNTY

Phillips

STATE

Arkansas

3 MAP REFERENCE

SOURCE United States Geological Survey, Latour Quadrangle

SCALE 1:62,500

DATE 1961

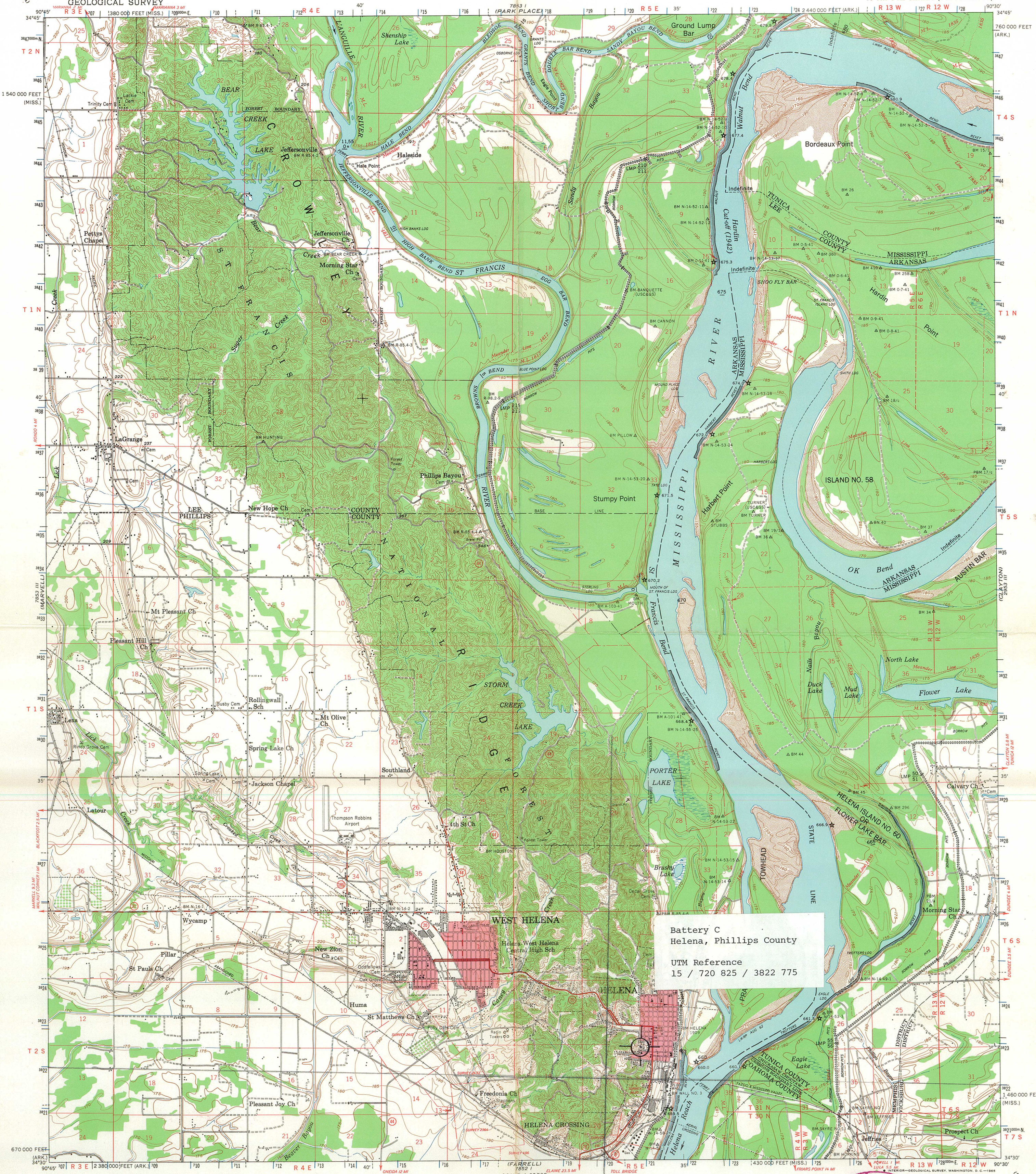
4 REQUIREMENTS

TO BE INCLUDED ON ALL MAPS

1. PROPERTY BOUNDARIES
2. NORTH ARROW
3. UTM REFERENCES

UNITED STATES
DEPARTMENT OF THE INTERIOR
GEOLOGICAL SURVEY

LATOUR QUADRANGLE
ARKANSAS—MISSISSIPPI
15 MINUTE SERIES (TOPOGRAPHIC)



Battery C
Helena, Phillips County

UTM Reference
15 / 720 825 / 3822 775

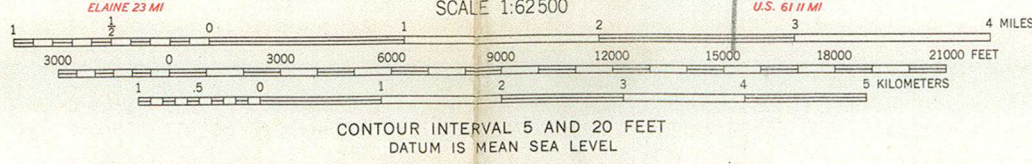
Mapped and edited by the Mississippi River Commission
Published by the Geological Survey
Control by USGS, USC&GS, and USCE

Topography by photogrammetric methods from aerial
photographs taken 1960, and planimetric surveys 1930-1949
and 1961. Field checked 1961

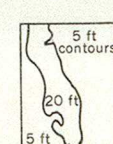
Polyconic projection. 1927 North American datum
10,000-foot grid based on Arkansas coordinate system, south
zone, and Mississippi coordinate system, west zone
1000-meter Universal Transverse Mercator grid ticks,
zone 15, shown in blue

Red tint indicates area in which only landmark buildings are shown

UTM GRID AND 1961 MAGNETIC NORTH
DECLINATION AT CENTER OF SHEET



THIS MAP COMPLIES WITH NATIONAL MAP ACCURACY STANDARDS
FOR SALE BY U.S. GEOLOGICAL SURVEY, DENVER, COLORADO 80225, OR WASHINGTON, D.C. 20242.
ARKANSAS GEOLOGICAL AND CONSERVATION COMMISSION, LITTLE ROCK, ARKANSAS,
AND MISSISSIPPI RIVER COMMISSION, VICKSBURG, MISSISSIPPI
A FOLDER DESCRIBING TOPOGRAPHIC MAPS AND SYMBOLS IS AVAILABLE ON REQUEST



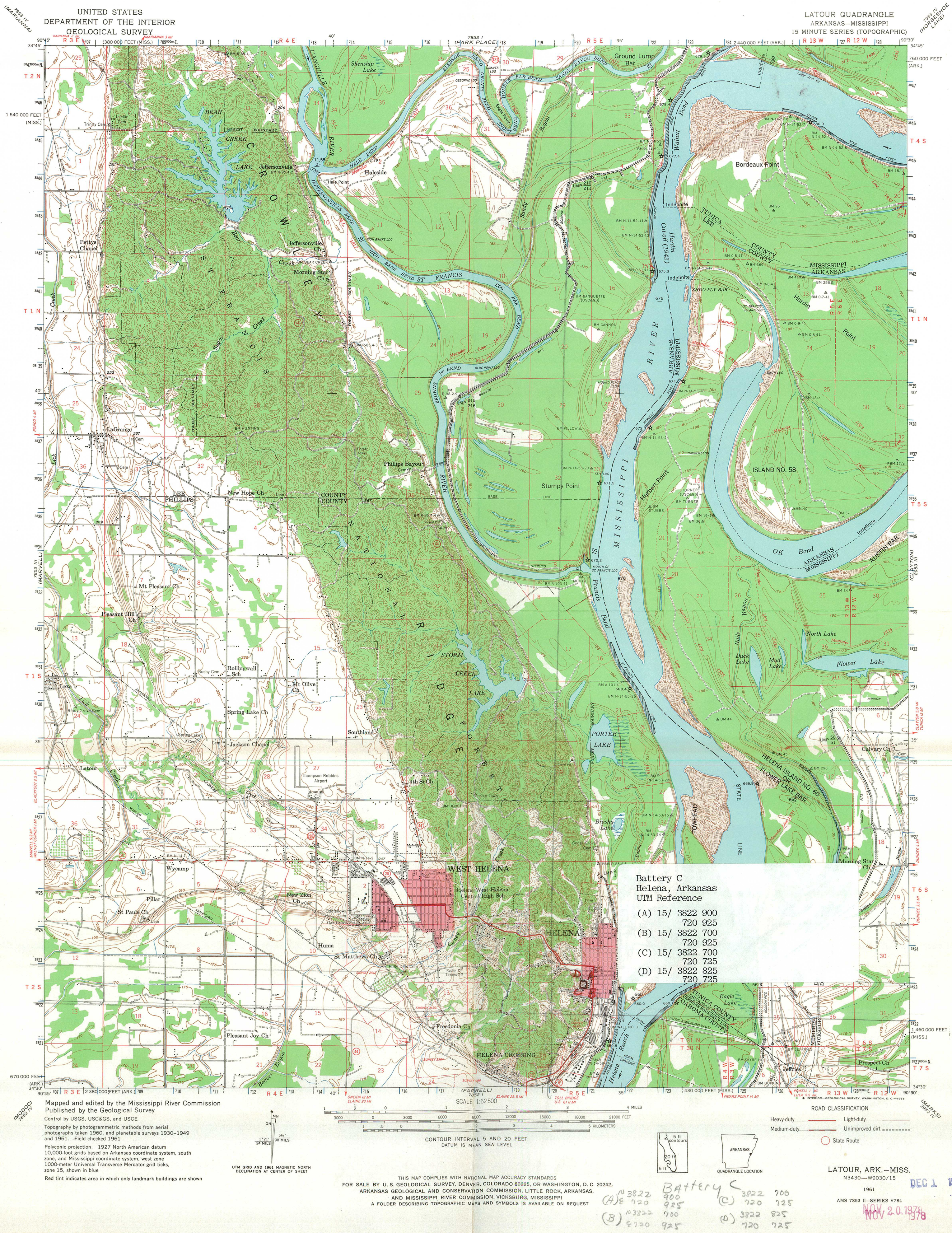
ROAD CLASSIFICATION

Heavy-duty ————
Medium-duty ————
Light-duty ————
Unimproved dirt ————
State Route ————

RECEIVED
NOV 14 1977
NATIONAL REGISTER

QUADRANGLE LOCATION

LATOUR, ARK.—MISS.
7853 II—V784
1961
DEC 1 1978



UNITED STATES
DEPARTMENT OF THE INTERIOR
GEOLOGICAL SURVEY

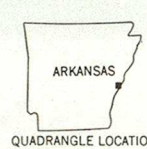
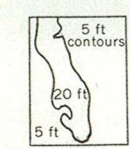
LATOUR QUADRANGLE
ARKANSAS-MISSISSIPPI
15 MINUTE SERIES (TOPOGRAPHIC)

Battery C
Helena, Arkansas
UTM Reference
(A) 15/ 3822 900
720 925
(B) 15/ 3822 700
720 925
(C) 15/ 3822 700
720 725
(D) 15/ 3822 825
720 725

Maped and edited by the Mississippi River Commission
Published by the Geological Survey
Control by USGS, USC&GS, and USCE
Topography by photogrammetric methods from aerial
photographs taken 1960, and planimetric surveys 1930-1949
and 1961. Field checked 1961
Polyconic projection. 1927 North American datum
10,000-foot grids based on Arkansas coordinate system, south
zone, and Mississippi coordinate system, west zone
1000-meter Universal Transverse Mercator grid ticks,
zone 15, shown in blue
Red tint indicates area in which only landmark buildings are shown

SCALE 1:62,500
CONTOUR INTERVAL 5 AND 20 FEET
DATUM IS MEAN SEA LEVEL

ROAD CLASSIFICATION
Heavy-duty ——— Light-duty ———
Medium-duty ——— Unimproved dirt ———
State Route



LATOUR, ARK.-MISS.
N3430-W9030/15
1961
AMS 7853 II-SERIES V784
NOV 20 1978
DEC 1 1978

THIS MAP COMPLIES WITH NATIONAL MAP ACCURACY STANDARDS
FOR SALE BY U.S. GEOLOGICAL SURVEY, DENVER, COLORADO 80225, OR WASHINGTON, D.C. 20242,
ARKANSAS GEOLOGICAL AND CONSERVATION COMMISSION, LITTLE ROCK, ARKANSAS,
AND MISSISSIPPI RIVER COMMISSION, VICKSBURG, MISSISSIPPI
A FOLDER DESCRIBING TOPOGRAPHIC MAPS AND SYMBOLS IS AVAILABLE ON REQUEST

MAY 28 9 16 AM '71
 PARK SERVICE
 WASHINGTON OFFICE

GENE RAFF, Chairman
WALTER L. MORRIS, Vice-Chairman
MRS. MARION HICKEY, Secretary
JOHN M. MOYE, JR., Treasurer
WILLIAM J. BROTHERS
MRS. JIM LINDER
PAUL MUSCALINO
DR. H. M. PROFFITT

2681-7

MAY 27 1977

DATE REC'D

INDIVIDUAL RESPONSE (ATTACHED)

INFORMATIVE MATERIAL SENT

TELEPHONE CALL (ATTACHED)

DATE ACTION TAKEN

INITIALS

Congress of the United States
House of Representatives
Washington, D.C. 20515

May 26, 1977

1ST DISTRICT, ARKANSAS

CLAY
CRAIGHEAD
CRITTENDEN
CROSS
FULTON
GREENE
INDEPENDENCE
IZARD
JACKSON
LAWRENCE
LEE
MISSISSIPPI
MONROE
PHILLIPS
POINSETT
RANDOLPH
SHARP
ST. FRANCIS
STONE
VAN BUREN
WOODRUFF

Mr. Gary Everhardt
Director
National Park Service
Department of Interior
Washington, D. C.

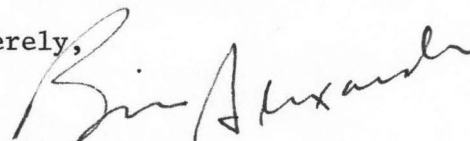
Dear Mr. Everhardt:

Enclosed is a copy of a letter from the Historic Commission of the City of Helena, Arkansas, which I believe is self-explanatory.

I would appreciate your advising me of the prospects of obtaining historic battlefield status for the area outlined in this letter, and keeping me advised as the application progresses through your normal procedure. If I can provide additional assistance, please let me hear from you.

With kindest regards and appreciation for your cooperation, I am

Sincerely,



BILL ALEXANDER
Member of Congress

BA/bat

Enclosure

JUN 6 1977

Honorable Bill Alexander
House of Representatives
Washington, D.C.

Dear Mr. Alexander:

I am pleased to acknowledge your May 26 letter on behalf of Col. Frank R. Garner III, Retired, concerning the Battery "C" site of the Battle of Helena, Arkansas.

We appreciate your interest and will provide you a reply at the earliest opportunity.

Sincerely yours,

W. Ira Hutchison

Acting Director

190 (2) w/incoming
FNP:CRBraxton:crb:6-2-77

Phillips' Co.

Braxton 421

*T. Wash
6/22
Whelan 6/22*

H34-190

JUN 23 1977

W

Honorable Bill Alexander
House of Representatives
Washington, D.C.

Dear Mr. Alexander:

Thank you for your inquiry in behalf of Colonel Frank R. Garner III, USA, Retired, concerning the historic preservation of Battery C in Helena, Arkansas.

For your convenience, we are enclosing a copy of our response to Colonel Garner in reply to his direct inquiry to the National Park Service concerning this matter.

We appreciate your interest in the programs of the National Park Service.

Sincerely yours,

Ernest Allen Connally

Associate
Director

Enclosures

bcc:

Ms. Anne Bartley
Director, Arkansas Historic
Preservation Program
Suite 500, Continental Building
Markham and Main Streets
Little Rock, Arkansas 72201)

Regional Director-Southwest)

001-Reading File
160) / 190) / 700 / 760 / 880)

FNP:BGrosvenor:CRB:cac:6/20/77

(BASIC RETAINED IN 880)

H34-880

Col. Frank R. Garner III, USA, Retired
Phillips County Community College
P.O. Box 785
Helena, Arkansas 72342

JUN 23 1977

Dear Colonel Garner:

Thank you for your letter concerning the addition of Battery C in Helena, Arkansas, to the National Park System.

We are enclosing a leaflet which outlines the preservation programs of the National Park Service and explains the procedure by which the National Park System acquires historical areas. Normally this is a result of Congressional action. Once appropriate legislation for a new area has been introduced, the Department of the Interior has an opportunity to comment on the property's significance and feasibility for park management. This evaluation is very exacting, even for areas possessing national significance. Because of the extent of its obligations to existing holdings, the National Park Service seldom advocates acquisition of a new area unless there are not alternatives for its preservation. The Civil War is well represented by historic sites and parks within the National Park System, including Fort Smith National Historic Site and Pea Ridge National Military Park in Arkansas.

Listing in the National Register of Historic Places is Federal recognition that a property possesses historic values and is worthy of preservation. The enclosed leaflet and fact sheets describe the National Register and the related grants-in-aid program. Nominations are made by the State through the State Historic Preservation Officer. For Arkansas, this official is Anne Bartley, Director, Arkansas Historic Preservation Program, Suite 500, Continental Building, Markham and Main Streets, Little Rock, Arkansas 72201. The historic preservation office in Arkansas has advised us that a nomination for Battery C was prepared a year ago, but that final approval was delayed at the request of a representative from the city of Helena. As the city has not submitted further comment, the historic preservation program plans to continue processing the nomination and will forward it to the National Register

✓ (BASIC RETAINED IN 880)

Phillips Co.

*Braxton
Grosvenor
Gandl
Herrington
Murtagh
T Wood
6/22
A. Wood*

following review board approval. We will notify the State Historic Preservation Officer with the usual form of notification if, after National Park Service evaluation, Battery C is placed in the National Register.

We appreciate your interest in historic preservation.

Sincerely yours,

Ernest Allen Connally

Associate

Director

Enclosures

bcc:

Ms. Anne Bartley
Director, Arkansas Historic
Preservation Program
Suite 500, Continental Building
Markham and Main Streets
Little Rock, Arkansas 72201)

Regional Director-Southwest)

001-Reading File
160) / 190) / 700 / 760 / 880)

FNP:BGrosvenor:cac:6/20/77



ARKANSAS HISTORIC PRESERVATION PROGRAM

Suite 500, Continental Building, Main and Markham
Little Rock, Arkansas 72201 Telephone: (501) 371-2763



August 4, 1977

The Honorable Thad Kelly
Mayor of Helena
Helena, AR 72342



AUG 10 1977

Re: Battery C
Helena, Phillips County

Dear Mayor Kelly:

The staff of the Arkansas Historic Preservation Program is preparing a National Register nomination for Battery C which will be presented to the Arkansas State Review Committee at their September meeting. If approved, the nomination will be submitted to the National Register office in Washington for final consideration.

The National Register of Historic Places is a listing of historic sites, buildings, objects and districts from all across the country that are worthy of preservation.

Entry in the National Register is an honor which places no obligation on a private owner. It does, however, provide protection through comment by the Advisory Council on Historic Preservation from federally financed, assisted or licensed projects that might affect a National Register property.

On October 4, 1976, the President signed a Tax Reform Act of which Section 2124 refers to tax incentives for historic properties. Enclosed you will find an information sheet on that tax act.

If you have any questions concerning the program or this property's nomination, please contact Dianna Kirk of our staff.

Enclosed are two copies of this letter. Please complete the form below, sign and return the original to our office. The copy is for your files. We would appreciate receiving any comments you might have concerning the nomination of this property. If we do not hear from you within 30 days, your approval will be assumed.

Sincerely,

Barbara Woodard

Barbara Woodard, Deputy Director
Arkansas Historic Preservation Program

I approve of the nomination of the above property
to the National Register of Historic Places.

 X
Yes No

Comments: *The citizens of the area consider the Battle of Helena
Important to the History of this country. We are fortunate that
Battery C has not been destroyed by construction from the original
terrain for over 100 years.*

8-9-77
Date

Thad Kelly
Signature
Thad Kelly, Mayor

TELEPHONE REPORT

OFFICE OF ARCHEOLOGY AND HISTORIC PRESERVATION

PROJECT: *Battery C*

TO/FROM: *Londra Smith*

DATE: *11-7*

ADDRESS:

PHONE:

STAFF MEMBER: *Sheffy*

DIVISION:

REPORT:

asked her to call back

e VBD

4 UTM

TELEPHONE REPORT

OFFICE OF ARCHEOLOGY AND HISTORIC PRESERVATION

PROJECT: Battery C

TO/FROM: Sandra Smith

DATE: 11-13

ADDRESS:

PHONE:

STAFF MEMBER:

Sheffs

DIVISION:

REPORT:

Legal description - UTM coming - all on
their way - immediately

U. S. DEPARTMENT OF THE INTERIOR
NATIONAL PARK SERVICE

DATE

3-14-78

TIME OF CALL

3-23 78

check

AM
PM

TELEPHONE REPORT

ALL ☒ TO: ☐ FROM (Name)

Sandy Taylor

2. ADDRESS (Tel. No. if needed)

501 - 371-2763

SUBJECT, PROJECT NO., ETC.

Battery C

DETAILS OF DISCUSSION

Told her that -- as we talked
about at annual meeting - I wanted
some further statement describing relative
degree of integrity - 2 is the content
of some loss of integrity - why this
is still significant.

NAME OF PERSON PLACING/RECEIVING CALL

Shfr

TITLE

OFFICE

WASO-166
(August 1971)

U. S. DEPARTMENT OF THE INTERIOR
NATIONAL PARK SERVICE

DATE

5-10-78

TELEPHONE REPORT

TIME OF CALL

AM
PM

1. CALL ☒ TO: ☐ FROM (Name)

Sender

San Juan

2. ADDRESS (Tel. No. if needed)

3. SUBJECT, PROJECT NO., ETC.

Battery C

4. DETAILS OF DISCUSSION

called for - 3/4 UTM points

- VBD

- boundary acreage justification

NAME OF PERSON PLACING/RECEIVING CALL

Sheffs

TITLE

OFFICE

OCT 27 1978

NOV 2 1978

THAD R. KELLY, JR., MAYOR
MRS. MILDRED SALLIS, CITY CLERK
MRS. LILLIAN HATFIELD, CITY TREASURER



EDWARD GRAUMAN, MUNICIPAL JUDGE
WOOTEN EPES, JR., CITY ATTORNEY
JAMES FRAZIER, CITY ENGINEER

CITY OF HELENA

HELENA, ARKANSAS

16 October 1978

SUBJECT: Nomination of Battery "C" to the National Register of Historic Places:
Helena, Phillips County, Arkansas.

TO : National Register of Historic Places.

1. The Battery "C" site is a monument to the valor and determination of the Confederate Infantryman. But, it also best represents command failure in leadership and follow-up. The site represents the consequences which result when senior military officers are motivated by personal interests and not by common objectives.

2. The Battery "C" site and its accompanying 10-acres contain the most critical locations on the Helena Battlefield. It was here that the Confederate Infantry penetrated Union Lines and secured a "works" which dominated the principal and the majority of the secondary Union interior defensive positions. On the site, one can see the ground won through common soldier heroics lost due to the ineptness of senior commanders. From this "works," Colonel Hart's attacking infantry fired a cannon into the Union Garrison. The "works" capture gave the Confederate command an avenue to deploy additional attack forces inside the Union defense. This avenue was used with emotion and not the good tactical judgement needed to expand a local objective.

3. The defensive fires of the supporting USS Tyler were directed toward the "works" to deter further forward movement by the attacking force. These fires caused the seasoned Confederate Infantry - who could see the 8-inch balls in flight - to shift slightly to the South to avoid the impact area. The effectiveness of the Tyler's fires as logged by the Captain are suspect in light of the line of attack, the effectiveness of cannon against infantry in the war, and the need for direct fire on targets.

4. Battery "C" protected the west and northwest approaches to Battery "D". The Battery "D" attack stalled about 7:00 AM at the 6th and final rifle pit line. General Sterling Price's attack on Battery "C" was 2-hours late, and this was the cause for the Battery "D" attack to fail. Battery "C" units turned their pieces and fired into the attacking Confederate infantry's flank while unattacked by Price. An abortive attack on Battery "D" was launched at about 8:30 AM to apply pressure from the north, and assist General Fagan's brigade take the "works." This attack by elements of General McRae's infantry - a part of the initial Battery "C" attack force - failed in part for lack of numbers and the timely shifting of interior Union forces.

5. Yet even with the 2-hour delay and the loss of the element of surprise, the two axis attack on Battery "C" succeeded because of the common soldier's efforts. The "works" was held from about 8:30 to 10:30 AM, and the senior

~~OVER~~

SUBJECT: Nomination of Battery C Continued:

16 October 1978

Confederate commanders were unable to exploit the situation. An orderly withdrawal of the remaining effective Confederate infantry was made in the face of increasing pressure from the Union commander's shifting of the 33d Iowa Infantry Regiment (-) and the 1st Indiana Calvary Regiment.

SUMMARY:

1. No Confederate location on the field placed the overall Union force in such grave jeopardy as did the Battery "C" penetration. Had the Confederate commander's plan foreseen the need to shift reserve forces on a timely basis into a Battery "C" or "D" penetration of the defense, the concentration needed for a follow through attack force could have been achieved. This maneuver was not realized because the basic attack plan failed to consider the principles of mass and movement. In fact, the confederate plan was self-defeating since the Confederate force was divided to attack all of the Union's earthworks except for Batteries "B" and "F."

2. The passage through Battery "C" of concentrations of fresh Confederate infantry could have resulted in the defeat in detail of each separate Union position. As it was, the Union commander with fewer troops used interior movement to defeat in detail a far superior Confederate force.

3. The loss of Helena to the Union would have resulted in the momentary loss of Northern control of the Mississippi River. A defeat of the Helena Union force on 4 July 1863 would have caused this to occur on the very day that Vicksburg fell. Union leadership realized the importance of Helena to the Union lines of communication, and 20-days following the battle found over 20,000 Union effectives in and about the City.

11/21/78
Sherfy

In 1974, we listed another Civil War battery outside the town of Helena significant for the same reasons. That nomination form claimed that it (Battery D) was the only battery still retaining integrity. However, we listed only 1 acre--which is pretty unrealistic for a battery and its location.

The town now wants to list Battery C also. It was privately owned before and has ~~now~~ now been given to the town.

Community now indicates that while the defensive/trench works may be less prominent than those of Battery D - that the open hill on which Battery C was located remains--open and prominent

Obviously - these two ought to have been combined. ~~But I am~~ I am sure that community interest in listing Battery C has a lot to do with its present public ownership.

But - I have concluded that we still might as well list. Community obviously does value as a historic resource. And as a site it possesses as much integrity as many of our listed sites.

See

Nov 2, 1978
new material

Ms. Anne Bartley
Director, Arkansas Historic
Preservation Program
Suite 500, Continental Building
Markham and Main Streets
Little Rock, Arkansas 72201

Possible reject letter.

Dear Ms. Bartley;

After careful consideration, we are returning the nomination for the Battery C Site, Helena, Arkansas as it does not appear to have maintained sufficient integrity to merit inclusion on the National Register. While the nature of earth~~ly~~^{en} fortifications is such that natural elements gradually alter the site, the 1930 removal of a large portion of the eastern slope seriously changed and affected the integrity of Battery C.

Battery D, listed on the National Register on September 17, 1974, remains basically unaltered and better represents the military significance of the Battle of Helena.

We are sure that you will agree that it is important to maintain the standards and criteria of the National Register, but we will be pleased to review the nomination again should you ~~decide~~^{decide} to resubmit it.

Sincerely yours,

William J. Murtagh

Keeper of the National Register

ENTRIES IN THE NATIONAL REGISTER

STATE ARKANSAS

Date Entered DEC 1 1978

<u>Name</u>	<u>Location</u>
Gordon, Troy, House	Fayetteville Washington County
Clark County Courthouse	Arkadelphia Clark County
Washington County Jail	Fayetteville Washington County
Womack-Parker House	Nashville Howard County
Battery C Site	Phillips County
Holt, Flavius, House	Nashville Howard County
Massey Hotel	Bentonville Benton County
Medical Arts Building	Hot Springs Garland County

Also Notified

Honorable Dale Bumpers
Honorable Kaneaster Hodges, Jr.
Honorable John P. Hammerschmidt
Honorable Ray Thornton
Honorable Bill Alexander

State Historic Preservation Officer
Ms. Anne Bartley
Acting Director
Arkansas Historic Preservation Program
Suite 500, Continental Building
Markham and Main Streets
Little Rock, Arkansas 72201

NR

Byers/bjr

12/19/78

NATIONAL REGISTER DATA SHEET

1 NAME as it appears on federal register: Battery C. Site			2 OTHER NAMES: Graveyard Hill			3 date of entry: DEC 1 1978		4 county code: 107	
5 LOCATION street & number n off Clark and York Sts.		city / town Helena		vicinity of		state AR		county Phillips	
								6 NPS REGION: SW	
7 OWNER <input type="checkbox"/> PRIVATE <input type="checkbox"/> STATE <input checked="" type="checkbox"/> MUNICIPAL <input type="checkbox"/> COUNTY <input type="checkbox"/> MULTIPLE <input type="checkbox"/> FEDERAL (agency name)								8 ADMINISTRATOR:	
9 EXISTING SURVEYS <input type="checkbox"/> HABS <input type="checkbox"/> HAER <input type="checkbox"/> NHL		10 FUNDED? <input type="checkbox"/> YES <input type="checkbox"/> NO		11 CONGRESS. DISTRICT 1st		12 SOURCE of NOMINATION <input checked="" type="checkbox"/> STATE <input type="checkbox"/> FEDERAL if state who prepared form?			
13 WITHIN NATIONAL REGISTER HISTORIC DISTRICT? <input type="checkbox"/> YES, NAME <input type="checkbox"/> NO		14 WITHIN NATIONAL HISTORIC LANDMARK? <input type="checkbox"/> YES, NAME <input type="checkbox"/> NO		15 ACREAGE		<input type="checkbox"/> LOCAL <input type="checkbox"/> PRIVATE ORGANIZATION			
16 CONDITION <input type="checkbox"/> excellent <input type="checkbox"/> good <input type="checkbox"/> fair		<input type="checkbox"/> deteriorated <input type="checkbox"/> ruins <input type="checkbox"/> unexposed <input type="checkbox"/> unexcavated		<input type="checkbox"/> altered <input type="checkbox"/> unaltered <input type="checkbox"/> reconstructed <input type="checkbox"/> excavated		<input type="checkbox"/> original site <input type="checkbox"/> moved <input type="checkbox"/> unknown		17 features: INTERIOR <input type="checkbox"/> SUBSTANTIALLY INTACT-1 <input type="checkbox"/> NOT INTACT-0 <input type="checkbox"/> UNKNOWN-4 <input type="checkbox"/> NOT APPLICABLE-7 EXTERIOR <input type="checkbox"/> SUBSTANTIALLY INTACT-2 <input type="checkbox"/> NOT INTACT-0 <input type="checkbox"/> UNKNOWN-5 <input type="checkbox"/> NOT APPLICABLE-8 ENVIRONS <input type="checkbox"/> SUBSTANTIALLY INTACT-3 <input type="checkbox"/> NOT INTACT-0 <input type="checkbox"/> UNKNOWN-6 <input type="checkbox"/> NOT APPLICABLE-9	
18 ACCESS <input type="checkbox"/> YES-Restricted <input type="checkbox"/> YES-Unrestricted <input type="checkbox"/> No Access <input type="checkbox"/> Unknown				19 ADAPTIVE USE <input type="checkbox"/> YES <input type="checkbox"/> NO		20 SAVED? <input type="checkbox"/> YES		IS PROPERTY A HISTORIC DISTRICT? <input type="checkbox"/> yes <input type="checkbox"/> no	
21 AREAS OF SIGNIFICANCE: <input type="checkbox"/> ARCHEOLOGY-prehistoric-2 <input type="checkbox"/> ARCHEOLOGY-historic-1 <input type="checkbox"/> AGRICULTURE-3 <input type="checkbox"/> ARCHITECTURE-4 <input type="checkbox"/> ART-5				<input type="checkbox"/> ENGINEERING-11 <input type="checkbox"/> ENTERTAINMENT-26 <input type="checkbox"/> EXPLORATION-12 <input type="checkbox"/> HEALTH-27 <input type="checkbox"/> ECONOMICS-9 <input type="checkbox"/> EDUCATION-10		<input type="checkbox"/> LANDSCAPE ARCH.-15 <input type="checkbox"/> LAW-16 <input type="checkbox"/> LITERATURE-17 <input type="checkbox"/> MILITARY-18 <input type="checkbox"/> MUSIC-19 <input type="checkbox"/> PHILOSOPHY-20		<input type="checkbox"/> POLITICS/GOVT.-21 <input type="checkbox"/> RELIGION-22 <input type="checkbox"/> SCIENCE-23 <input type="checkbox"/> SOCIAL/HUMANITARIAN-24 <input type="checkbox"/> SOCIAL/CULTURAL-30 <input type="checkbox"/> TRANSPORTATION-25	
				<input type="checkbox"/> RECREATION-28 <input type="checkbox"/> SETTLEMENT-29 <input type="checkbox"/> URBAN PLANNING-31 <input type="checkbox"/> OTHER (SPECIFY)		22 CLAIMS: explain 'first' <input type="checkbox"/> 'oldest' <input type="checkbox"/> 'only' <input type="checkbox"/>			
23 functions WHEN HISTORICALLY SIGNIFICANT: CURRENTLY:				24 dates of initial construction: major alterations: historic events:				25 ETHNIC GROUP ASSOCIATION	
26 architectural style(s):				27 architect:		28 master builder:		29 engineer:	
30 landscape architect / garden designer:		31 interior decorator:		32 artist:		33 artisan:		34 builder/contractor:	
35 NAMES give role & date PERSONAL: EVENTS: INSTITUTIONAL:									
36 NATIONAL REGISTER WRITE-UP									