



R17

1. Vero Railroad Station
2. 2336 14th Avenue, Vero Beach, Florida
3. 1917
4. Unknown
5. Indian River County Historical Society
6. South elevation
7. Photo #1 of 10



1. Vero Railroad Station
2. 2336 14th Avenue, Vero Beach, Florida
3. 1924
4. Unknown
5. Indian River County Historical Society
6. South elevation
7. Photo #2 of 10



RAILROAD  
STATION  
*Restoration*  
BY I.B. COUNTY  
HISTORICAL SOCIETY  
P.O. BOX 4528  
CONTRIBUTIONS TAX DEDUCTIBLE  
MAIN EVENTS  
JAYCEES

K&B FOREIGN

1. Vero Railroad Station
2. 2336 14th Avenue, Vero Beach, Florida
3. 1986
4. Michael Skiscim
5. Indian River County Historical Society
6. West elevation
7. Photo #3 of 10



1. Vero Railroad Station
2. 2336 14th Avenue, Vero Beach, Florida
3. 1986
4. Michael Skiscim
5. Indian River County Historical Society
6. East elevation
7. Photo #4 of 10





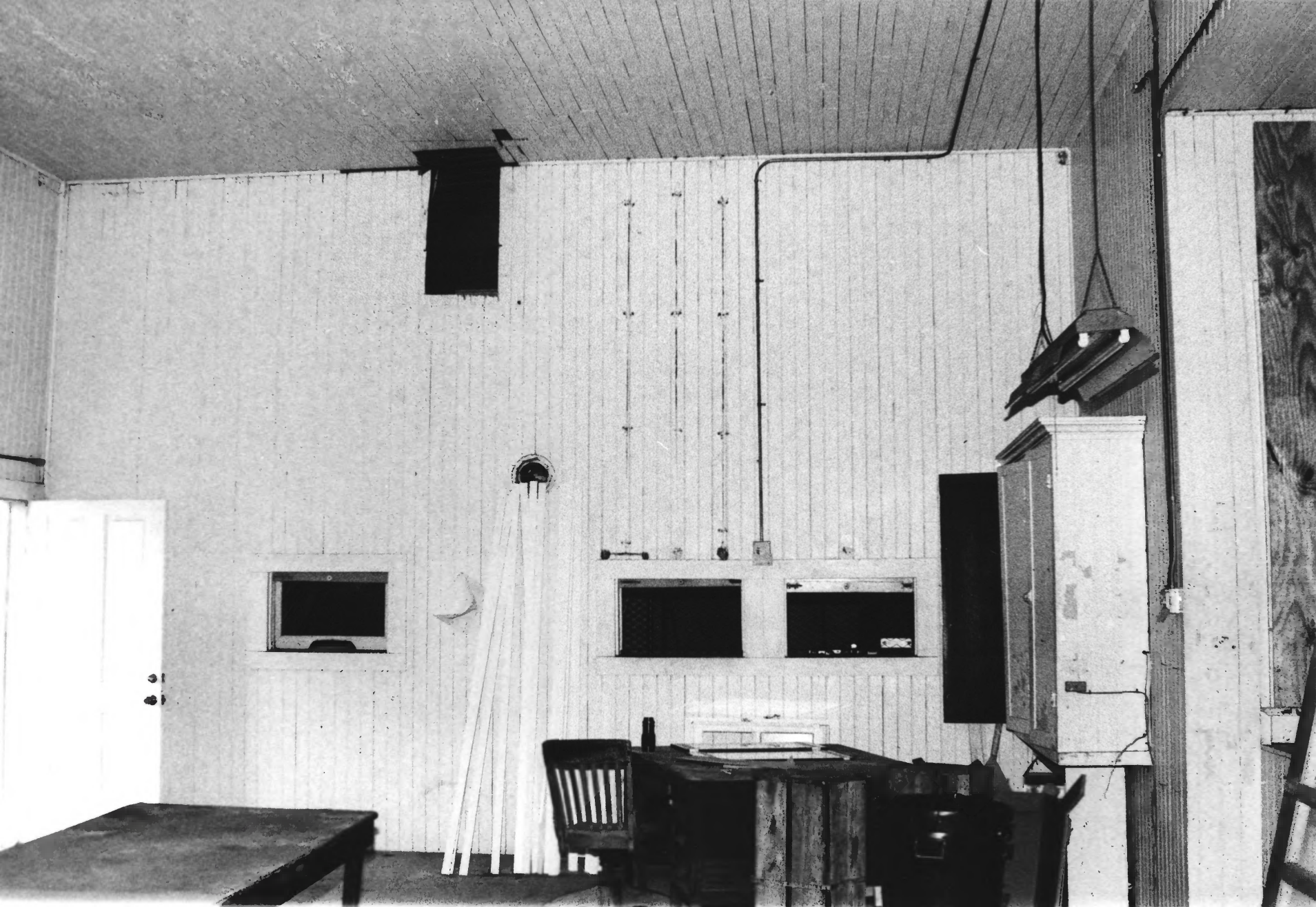
1. Vero Railroad Station
2. 2336 14th Avenue, Vero Beach, Florida
3. 1986
4. Michael Skiscim
5. Indian River County Historical Society
6. North elevation
7. Photo #5 of 10



1. Vero Railroad Station
2. 2336 14th Avenue, Vero Beach, Florida
3. 1986
4. Michael Skiscim
5. Indian River County Historical Society
6. South elevation
7. Photo #6 of 10



1. Vero Railroad Station
2. 2336 14th Avenue, Vero Beach, Florida
3. 1986
4. Michael Skiscim
5. Indian River County Historical Society
6. Detail of brackets
7. Photo #7 of 10



1. Vero Railroad Station
2. 2336 14th Avenue, Vero Beach, Florida
3. 1986
4. Millie Bunnel
5. Indian River County Historical Society
6. Agent's office and ticket windows
7. Photo #8 of 10





1. Vero Railroad Station
2. 2336 14th Avenue, Vero Beach, Florida
3. 1986
4. Millie Bunnel
5. Indian River County Historical Society
6. Ticket windows from agent's office
7. Photo #9 or 10



1. Vero Railroad Station
2. 2336 14th Avenue, Vero Beach, Florida
3. 1986
4. Millie Bunnel
5. Indian River County Historical Society
6. Agent's office and observation bay
7. Photo #10 of 10