

United States Department of the Interior
National Park Service

384



National Register of Historic Places
Registration Form

This form is for use in nominating or requesting determinations for individual properties and districts. See instructions on how to complete the National Register of Historic Places Registration Form (National Register Bulletin 16A). Complete each item by marking "x" in the appropriate box or by entering the information requested. If any item does not apply to the property being documented, enter "N/A" for "not applicable." For functions, architectural classification, materials, and areas of significance, enter only categories and subcategories from the instructions. Place additional entries and narrative items on continuation sheets (NPS Form 10-900a). Use a typewriter, word processor, or computer, to complete all items.

1. Name of Property

historic name BROOKFIELD CEMETERY

other names/site number _____

2. Location

street & number MAIN ST. (Mass. Route 9) not for publication

city or town BROOKFIELD N/A vicinity

state MASSACHUSETTS Code MA county WORCESTER code 027 zip code 01506

3. State/Federal Agency Certification

As the designated authority under the National Historic Preservation Act of 1986, as amended, I hereby certify that this nomination request for determination of eligibility meets the documentation standards for registering properties in the National Register of Historic Places and meets the procedural and professional requirements set forth in 36 CFR Part 60. In my opinion, the property meets does not meet the National Register Criteria. I recommend that this property be considered significant nationally statewide locally. (See continuation sheet for additional comments.)

Cara Metz

3/21/03

Signature of certifying official/Title Cara Metz, Executive Director
Massachusetts Historical Commission, State Historic Preservation Officer

Date

State or Federal agency and bureau

In my opinion, the property meets does not meet the National Register criteria. (See continuation sheet for additional Comments.)

Signature of certifying official/Title

Date

State or Federal agency and bureau

4. National Park Service Certification

I hereby certify that this property is:

Signature of the Keeper

Date of Action

- entered in the National Register
 See continuation sheet.
- determined eligible for the National Register
 See continuation sheet.
- determined not eligible for the National Register
- removed from the National Register
- other (explain):

Patrick Anders

5/9/2003

BROOKFIELD CEMETERY

Name of Property

WORCESTER COUNTY, MA

County and State

5. Classification

Ownership of Property

(Check as many boxes as apply)

(Check only one box)

- private
- Public-local
- public-State
- public-Federal

- building(s)
- district
- site
- structure
- object

Number of Resources within Property

(Do not include previously listed resources in the count.)

Contributing	Noncontributing	
0	1	building
38	0	sites
8	0	structures
59	0	objects
105	1	Total

Name of related multiple property listing

(Enter "N/A" if property is not part of a multiple property listing.)

N/A

Number of contributing resources previously listed in the National Register

N/A

6. Function or Use

Historic Functions

(Enter categories from instructions)

FUNERARY: Cemetery

Current Functions

(Enter categories from instructions)

FUNERARY: Cemetery

7. Description

Architectural Classification

(Enter categories from instructions)

Materials

(Enter categories from instructions)

foundation _____
walls _____
roof _____
other STONE: granite, slate, sandstone, marble
METAL: iron, zinc

Narrative Description

(Describe the historic and current condition of the property on one or more continuation sheets.)

(Please refer to continuation sheets)

**United States Department of the Interior
National Park Service**

**National Register of Historic Places
Continuation Sheet**

Section number 7 Page 1 Brookfield Cemetery
Brookfield, Worcester County, MA

NARRATIVE DESCRIPTION

The Brookfield Cemetery is the town's primary burial ground and represents an essential community function with a continuous history of use from 1714 to the present. The cemetery retains a high degree of integrity in its location, design, setting, materials, workmanship, feeling, and association and meets National Register Criteria A and C at the local level, with Criteria Consideration D for cemeteries applying. The Brookfield Cemetery holds approximately 10,000 grave markers, but derives its primary significance from the distinctive 18th & 19th century markers and from the association of the cemetery with the development and history of the town.

Location & Setting

The Brookfield Cemetery occupies a gently sloping site overlooking the Quaboag River, one-half mile west of the town common in Brookfield Center. The 43-acre parcel is roughly rectangular and extends from US Route 9 (West Main Street) on the north to the former Conrail railroad tracks on the south. Since the rear of the parcel is very marshy, only the northern portion has been developed and used for burials.

The cemetery is set in a rural/suburban corridor defined by Massachusetts Route 9 (West Main Street), a two-lane undivided road whose original layout followed the outline of a pre-colonial trail. Directly north of the cemetery on the opposite side of West Main Street is a mix of light residential and commercial development along the travel corridor. To the east, the residential development becomes more dense as it approaches the village center (0.5 miles).

Wetlands cover both the south and west sides of the cemetery, providing a rich natural context. Forested wetlands, including birch, hemlock, and fern, lie at the higher elevations close to the cemetery edges, providing a tall, dense boundary. As the lands drops away from the

(continued)

**United States Department of the Interior
National Park Service****National Register of Historic Places
Continuation Sheet**

Section number 7 Page 2 Brookfield Cemetery
Brookfield, Worcester County, MA

cemetery, wet meadows of grasses, sedges and rushes prevail. The undeveloped meadows extend southward to the Quaboag River, interrupted only by the former Conrail tracks lining the river edge.

Site and Layout*Boundaries & Entrances*

The cemetery is separated from the adjacent roadway by a low **fieldstone wall** along the north boundary, interrupted by three vehicle entrances and two pedestrian entrances. The western boundary is marked by a **partial stone wall** and a dense evergreen hedgerow, while a second shorter evergreen hedgerow extends east of the stone wall. The southern boundary is marked by dense brush of recent growth. The eastern boundary is unmarked and extends to the open lawn of the adjacent residential property.

The low fieldstone wall that defines the north boundary features a granite coping and **granite posts at each entry point**. Iron pin hinges are fixed in the granite posts at some locations, but the gates themselves remain only on the primary entrance.

The easternmost entrance in the north wall is a small pedestrian passage formerly fitted with an iron gate. The gate is missing, but entry to the oldest part of the cemetery is further narrowed by **two granite posts** set in the opening of the wall. A grassy footpath is barely discernible at the pedestrian entry.

The primary entrance in the north wall is marked by a rusticated **granite arch** fitted with **iron gates** (Photo #1). The form of the arch is Romanesque with the large center opening for vehicles flanked by two smaller pedestrian entries. The top of the arch supports two large draped urns in granite. Between them is a carved tablet with the dedication date (1873) and the legend: "*until the day breaks and the shadows flee away*"

(continued)

United States Department of the Interior
National Park Service

National Register of Historic Places
Continuation Sheet

Section number 7 Page 3 Brookfield Cemetery
Brookfield, Worcester County, MA

Above the side arch is a second inscription:

"presented to the Town of Brookfield by W. A. Banister and Otis Hayden"

A **roadway of compacted dirt** (Photo #2) passes under the arch and then branches out to the south and east, and a second vehicle entry lies at a break in the stone wall just east of the **Civil War monument** (Photo #4). An **asphalt roadway** leads south from the entry to the **tool shed** at the back of the cemetery. A third vehicle entry is located at a break in the stone wall near the eastern end, while an asphalt drive at the entry splits into four narrow roads that serve the eastern expansion of the cemetery.

Topographical and Landscape Features

The Brookfield Cemetery is divided by a **system of paths and roadways** that facilitate access to the burial sites. There are three major north-south roads (each related to a vehicle entrance in the stone wall) and seven smaller north-south paths. In addition, there is a primary east-west roadway connecting the north-south routes along the southern edge of the cemetery and a secondary east-west path that crosses the older (west) section of the cemetery.

The site itself slopes gently from west to east and from north to south. A grassy marsh extends along the eastern edge of the oldest (18th century) section and adjacent burials are supported by a **stone retaining wall**. The **stone vault** (1861) which served as a temporary repository for burials is built into the knoll at the head of the marsh. Mature trees include oak, maple, hemlock, and pine. The paths and roadways are grass or dirt in the western (18th century) and central (19th century) sections, and asphalt or gravel in the eastern (20th century) section.

Within the older sections of the cemetery, the mounded burials and family plots are significantly higher than the adjacent compacted roadways. In the newer (20th century) sections, the burials and roadways maintain a more consistent topography.

(continued)

**United States Department of the Interior
National Park Service**

**National Register of Historic Places
Continuation Sheet**

Section number 7 Page 4 Brookfield Cemetery
Brookfield, Worcester County, MA

A small level **parking area** was created by filling and grading the south end of the cemetery in 1962. The adjacent **tool shed**, a one-story wood frame structure set on blocks, was erected in 1975 to replace an earlier building nearby (now demolished). A concrete sidewalk was installed between the north wall and the main road (Route 9) in 1965. A **steel flagpole** was installed adjacent to the Civil War monument in 2000, replacing a similar pole installed in 1933.

The undeveloped southern section of the cemetery (roughly 2/3 of the parcel) is a low flood plain with streams, marshes, and areas of exposed bedrock. Small streams meander through cattails, dense brush, and young trees, but the undeveloped section is devoid of significant landscape features and displays no evidence of historical use.

Expansion Sequence

The cemetery shows evidence of expansion in three stages, each roughly equal in size. The system of roadways and paths encompasses all sections and there are no fences, walls, or other distinct separations delineating each area. All three sections of the cemetery are still in active use, although burials in the older areas are limited by space.

The colonial burying ground for the Town of Brookfield was established in 1714 and was defined in 1756 as a five-acre lot (the westernmost third of the current developed area). The old burying ground is slightly higher in elevation than the rest of the cemetery due to natural topography and the density of burials. The area is bordered by the stone wall on the north, a retaining wall overlooking the wetland on the east, undeveloped land (brush and trees) on the south, and a hedgerow and partial stone wall on the west. Grass paths roughly outline the perimeter of the burying ground and bisect at the center. Burials are mostly arrayed in north-south rows and are marked by vertical stone slabs 1 - 4 feet high with carving on one side. A few obelisks, one table stone, and one small tomb are situated at the northeast corner of the section

(continued)

**United States Department of the Interior
National Park Service**

**National Register of Historic Places
Continuation Sheet**

Section number 7 Page 5 Brookfield Cemetery
Brookfield, Worcester County, MA

overlooking the town vault and the wetlands. There are a few delineated family plots and family members in non-delineated plots are also buried in close proximity.

Large areas of the old burying ground are unmarked, suggesting that some of the older markers may have deteriorated, collapsed, been removed, or buried over time, or that graves may never have been marked at all. It is also possible that unmarked burials may lie along or under the stone walls line west and north cemetery edges.

The middle section of the cemetery (Photo #3), characterized by small knolls and terraces and a greater variety of monuments, was developed in the picturesque manner of a "garden" cemetery after 1861 and includes a prominent Civil War memorial (dedicated 1890) (Photo #4). The section is bordered by the entry gate and stone wall on the north, the Civil War monument and adjacent asphalt roadway on the east, the maintenance and parking areas on the south, and the compacted dirt roadway and adjacent wetlands on the west. Two secondary dirt and grass roadways run north-south (parallel to the perimeter roadways), dividing the section roughly into thirds. The topography slopes gently to the south and west with burials arrayed in north-south rows and in rectangular family plots delineated by posts and curbing. The types of markers are more varied and include vertical tablets and slabs, rectangular headstones, columns, and obelisks, ranging from a few inches to twelve feet in height. Most of the markers in the middle section are marble or granite, although there are a few zinc and pressed metal monuments.

The easternmost section was developed in the 1920s and expanded in 1937, 1941-42, 1952, and 1996. It is much flatter than the other sections and represents the aesthetic of the Modern Cemetery movement of the early 20th century. The section is bordered by the stone wall and hedgerow on the north, an open field on the east, a maintenance and spoils area on the south, and an asphalt roadway on the west. Four secondary roadways run north-south through the section to facilitate access to the burial sites. The burials are arrayed in north-south rows facing

(continued)

**United States Department of the Interior
National Park Service**

**National Register of Historic Places
Continuation Sheet**

Section number 7 Page 6 Brookfield Cemetery
Brookfield, Worcester County, MA

the adjacent roadways (east or west). There are several family plots marked by a common monument flanked by secondary stones. Most of the markers in the eastern section are granite blocks one to four feet high, but there are also many flat stones set flush with the lawn.

Burials are mixed throughout the Brookfield Cemetery with a great deal of variation in the size and orientation of plots. There are no areas specifically designated for veterans, children, non-Christians, or cremated remains, but the chronology of burials results in some noticeable clusters (e.g., war casualties). Family plots (often including several generations of an extended family) and sequential burials are characteristic throughout the cemetery.

One undated partial plan of the cemetery (probably ca. 1930) shows a small "Town Lot" at the southeast corner of the wetlands that may have been reserved for paupers and transients. Since there are no visible markers on the lot, the number of burials is currently unknown.

Markers and Monuments

N.B.: Reference to particularly significant markers and monuments is hampered by the lack of a consistent system for designating roadways and burial plots in the Brookfield Cemetery, but the developed area of the cemetery is small enough that most key stones can be located on the basis of a general directional reference. Please refer to the District Data Sheet for details.

By virtue of its geographic location in the center of the state, Brookfield absorbed burial practices and carving styles from several distinct cultural regions in the 18th century. The older section of the Brookfield Cemetery includes gray slate markers from the coastal region of eastern Massachusetts; brown sandstone markers from the Connecticut River Valley of western Massachusetts and central Connecticut; and markers of granite, schist, and quartzite from the quarries of central Massachusetts and eastern Connecticut.

(continued)

**United States Department of the Interior
National Park Service****National Register of Historic Places
Continuation Sheet**

Section number 7 Page 7 Brookfield Cemetery
Brookfield, Worcester County, MA

The carvings on 18th century gravestones are somewhat idiosyncratic, although they share a common style and vocabulary derived from English Puritan theology and culture. The most common motifs carved on the 18th century gravestones in Brookfield are meandering vines (representing eternal life and persistent memory), skulls and death's heads (memento mori), and soul effigies in the form of stylized heads with wings and/or crowns (representing salvation and the eternity of the soul). Some of the stones are engraved with inspirational verse as well as iconographic motifs. The following characteristic example marks the grave of Lucy Williston (d. 1782):

*Sleep precious dust while here confined in Earth
Till the glad spring of nature's second Birth
Then quit the transient winter of the Tomb
And rise and flourish in immortal Bloom*

The earliest 19th century gravestones in the Brookfield Cemetery retain the basic form and carving style of 18th century prototypes, but the vogue for neoclassical iconography is evident. Several gray slate slabs maintain the traditional form and profile, but are carved with motifs of willows (representing life and memory) and urns (representing the vanity of earthly life).

Interments from the period 1810-1880 are almost all marked by white marble gravestones and monuments (Photo #'s 5 and 6). The change in material represents a clear stylistic preference, but also the development of native quarries in western Massachusetts and Vermont and the development of more extensive trade networks (particularly after completion of the Western Railroad in 1840). The upright slab style of marker quickly lost favor and most new burials were marked with a simple marble tablet. The vocabulary of mourning in the 19th century burials is more conventional with pedestals, columns, shafts, obelisks, and three-dimensional urns (draped or undraped) inscribed with family information and sentimental verses. Urns and

(continued)

**United States Department of the Interior
National Park Service**

**National Register of Historic Places
Continuation Sheet**

Section number 7 Page 8 Brookfield Cemetery
Brookfield, Worcester County, MA

willows predominate, but other motifs include the pointing hand (a reference to the heavenly destination) and the seated lamb (commonly used to mark the children's burials, but also a reference to Christ).

While the monumental entry gate of 1873 represents the peak of the sculptural style in the Brookfield Cemetery, the dedication of the Civil War monument in 1890 (photo #4) represents the end of that phase. The free-standing cast metal monument consists of a high polygonal base with dedications and memorial tablets affixed to each face. A tall square column rising from the base supports a three-dimensional figure of a Union sentinel.

After 1890, the burials in the Brookfield Cemetery are marked by conventional headstones of black, gray, or red granite (polished or unpolished) and by low tablets set flush with the ground. The majority of late 19th and 20th century stones are inscribed with the name of the deceased, the birth and death dates, and familial relationships (e.g. "Beloved Mother"). A small number of stones are inscribed with verses, tributes, or decorative motifs.

The only vault tomb in the Brookfield Cemetery is the town vault (1861), which was used to hold remains in winter while awaiting burial. The town vault is a simple cavity set into the knoll of the northwest section of the cemetery. The face and roof are carved granite and an iron door is attached at the front. The lintel above the door is inscribed with the date of construction (1861). The side and back of the vault are covered by the knoll.

Current Condition

The cemetery is maintained by the Town of Brookfield and by families who own particular plots. The condition of the cemetery is generally good with trees, shrubs, and lawn areas maintained with reasonable care. Most of the visible damage has resulted from

(continued)

**United States Department of the Interior
National Park Service**

**National Register of Historic Places
Continuation Sheet**

Section number 7 Page 9 Brookfield Cemetery
Brookfield, Worcester County, MA

environmental conditions and routine maintenance practices.

The stone markers and monuments exhibit normal weathering and decay. Many of the older slate tablet stones are tilted and delaminating, while many of the 19th century marble markers have been stained and eroded by acid rain. Stones and markers are chipped and abraded at the height of the power mower. The family plots are still visible, but most of the iron chains and railings that formerly delineated the areas have been removed over time. The stone curbs and copings are remain, but many sections are skewed, fallen, partially buried, or removed.

The most obvious elements missing from the cemetery are the iron fences, rails, chains, and gates that demarcated many of the family plots and sections. Vestigial pins, eyes, and rust stains indicate their former presence, although very few are now in evidence.

The normal effects of age and weathering contribute to the time-worn and historic sense of the cemetery. Some of the stones are now completely illegible, while many others can only be read for a brief period each day in the appropriate raking light. The slow and unstoppable deterioration of the grave markers is an apt analogy for the fading memory and mouldering remains sheltered in each grave. Time passes and all must come to dust. "As I am now, so you must be" and "Death is a debt to heaven due, which I have paid and so must you" are two of the more common verses encountered in the Brookfield Cemetery.

Restoration Plans

By nominating the Brookfield Cemetery to the National Register of Historic Places, the Town of Brookfield hopes to promote broader appreciation of the historic and artistic significance of this community resource. As the value and condition of the cemetery become more widely known, the Town intends to solicit public and private funds for restoration and maintenance.

(continued)

**United States Department of the Interior
National Park Service****National Register of Historic Places
Continuation Sheet**

Section number 7 Page 10 Brookfield Cemetery
Brookfield, Worcester County, MA

Archaeological Description

Although no ancient Native American sites are recorded within the boundaries of the Brookfield Cemetery, sites may be present. One site is known in the general area (within one mile). An important regional concentration of sites is located approximately two to three miles southeast of the cemetery in the upland area surrounding Quaboag Pond. Environmental characteristics of the Brookfield Cemetery combined with issues of integrity do not indicate favorable conditions for locating significant Native American sites. Some parts of the cemetery contain landforms that represent locational criteria (slope, soil drainage, distance to wetlands) that are favorable indicators for predicting the locations of Native American sites. Knolls, terraces, and other level to moderately sloping land surfaces are present with good soil drainage and close proximity (within 1000 feet) to wetlands. Other areas of the cemetery, however, are poorly drained and contain areas of exposed bedrock, both characteristics that adversely affect the site potential of this location. Only one-third of the municipally owned tract is used for cemetery purposes. The amount of municipally owned land favorable for ancient Native American sites is less considering a portion of that land is filled wetlands. In 1952, 66 truckloads of fill were deposited in the eastern section of the cemetery to create new burial plots. Given the above information and impacts related to over 10,000 grave excavations, dynamiting tree stumps after the 1938 hurricane, and construction of roads, entrances, walls, water system, and other historic landscape features within the cemetery, a low potential exists for the recovery of significant ancient Native American resources.

A high potential exists for locating historic archaeological resources at the Brookfield Cemetery. Unmarked graves may represent the most common archaeological resource in the cemetery.

(continued)

**United States Department of the Interior
National Park Service**

**National Register of Historic Places
Continuation Sheet**

Brookfield Cemetery

Section number 7 Page 11 Brookfield, Worcester County, MA

Large areas of the old burying ground are unmarked, suggesting some of the older markers may have deteriorated, collapsed, been removed, or buried over time. Some graves may never have been marked at all. Unknown persons, paupers, and other indigent persons were often buried in peripheral areas of cemeteries in graves marked with small stones that could easily be overgrown, wooden markers that have since deteriorated, or no markers. One undated partial plan of the cemetery (probably ca.1930) shows a small "Town Lot" at the southeast corner of the wetlands that may have been reserved for paupers. No visible markers are located on the lot and the number of burials in the area is unknown. Unmarked burials could exist along or under stone walls that line the western and northern cemetery boundaries. Unmarked and marked graves may contain evidence of the grave shaft, casket, skeletal remains, personal belongings, and artifacts related to memorial services. Structural evidence of outbuildings associated with cemetery maintenance activities may also exist. The existing tool (1975) shed replaced an earlier structure that was demolished. Evidence of archaeological features including builder's trenches for walls, drainage features, fill areas, and post holes from fence posts and lines no longer extant, may also exist.

(end)

BROOKFIELD CEMETERY

Name of Property

WORCESTER COUNTY, MA

County and State

8. Statement of Significance

Applicable National Register Criteria

(Mark "x" in one or more boxes for the criteria qualifying the property for National Register listing.)

- A** Property is associated with events that have made a significant contribution to the broad patterns of our history.
- B** Property is associated with the lives of persons significant in our past.
- C** Property embodies the distinctive characteristics of a type, period, or method of construction or represents the work of a master, or possesses high artistic values, or represents a significant and distinguishable entity whose components lack individual distinction.
- D** Property has yielded, or is likely to yield, information important in prehistory or history.

Criteria Considerations

(Mark "x" in all the boxes that apply.)

Property is:

- A** owned by religious institution or used for religious purposes.
- B** removed from its original location.
- C** a birthplace or grave.
- D** a cemetery.
- E** a reconstructed building, object, or structure.
- F** a commemorative property.
- G** less than 50 years of age or achieved significance within the past 50 years.

Narrative Statement of Significance

(Explain the significance of the property on one or more continuation sheets)

9. Major Bibliographical References

(Cite the books, articles, and other sources used in preparing this form on one or more continuation sheets.)

Previous documentation on file (NPS):

- preliminary determination of individual listing (36 CFR 67) has been requested
- previously listed in the National Register
- previously determined eligible by the National Register
- designated a National Historic Landmark
- recorded by Historic American Buildings Survey # _____
- recorded by Historic American Engineering Record # _____

Areas of Significance

(Enter categories from instructions)

ARCHITECTURE

COMMUNITY PLANNING & DEVELOPMENT

LANDSCAPE ARCHITECTURE

SOCIAL HISTORY

Period of Significance

1714-1953

Significant Dates

1714

1861

1920

Significant Person

(Complete if Criterion B is marked above)

N/A

Cultural Affiliation

N/A

Architect/Builder

Primary location of additional data:

- State Historic Preservation Office
- Other State agency
- Federal agency
- Local government
- University
- Other

Name of repository:

**United States Department of the Interior
National Park Service**

**National Register of Historic Places
Continuation Sheet**

Brookfield Cemetery
Section number 8 Page 1 Brookfield, Worcester County, MA

NARRATIVE STATEMENT OF SIGNIFICANCE

Brookfield Cemetery, West Main St., Brookfield, MA possesses integrity of location, design, setting, materials, workmanship, and association, and meets National Register criteria A and C on the local level. Brookfield Cemetery occupies a significant place in the history of the town as the town's only public cemetery from about 1714 to the present and thus qualifies under Criterion A. Because of subsequent town division, residents of at least six present towns are interred in Brookfield Cemetery. The cemetery contains approximately 10,000 grave markers, including those of early ministers, manufacturers, and other prominent citizens, and many whose homes stood within the Brookfield Common district. Family relationships and status differentials are evident, particularly in the 19th century sections. The cemetery represents a sustained civic commitment to provide proper burial. Particularly in the 19th century, it expresses increasing formality and elaboration, culminating in the erection of a massive gate in 1873 and a Civil War monument in 1890. The presence of the Civil War monument adds importance to the cemetery and helps it remain a focus of community pride.

Under Criterion C, the Brookfield Cemetery is a significant historical and artistic resource that represents the distinctive characteristics of 18th, 19th, and early 20th century burial grounds and cemeteries in Massachusetts. The original 18th century burial ground features closely ranked burials without division. The grave markers are native sandstone, slate, granite, and quartzite carved with the exuberant and characteristic iconography of New England Puritan culture. Several of the grave markers are particularly significant because they represent the work of known 18th century stonecarvers. The persistent cultural imagery and the wide range of carving styles make 18th century New England gravestones a significant and distinguishable entity. The most important Brookfield examples have been published and described in major reference

(continued)

**United States Department of the Interior
National Park Service****National Register of Historic Places
Continuation Sheet**

Section number 8 Page 2 Brookfield Cemetery
Brookfield, Worcester County, MA

works.

Historical Cemetery Styles

The Brookfield Cemetery is a significant historical and artistic resource that represents the distinctive characteristics of 18th, 19th, and early 20th century burial grounds and cemeteries in Massachusetts. The original 18th century burial ground (northwest portion of the current cemetery) features closely ranked burials without division. The grave markers are native sandstone, slate, granite, and quartzite carved with the exuberant and characteristic iconography of New England Puritan culture. The stones also represent the work of several known stonecarvers of the 18th century.

The middle section of the cemetery represents the aesthetic of the Victorian garden cemetery exemplified by Mount Auburn Cemetery (Cambridge, Mass., 1831), Greenwood Cemetery (Brooklyn, NY, 1838), and Laurel Hill Cemetery (Philadelphia, Penn., 1838). The more extensive layout and more careful landscaping reflected in the expansion of the Brookfield Cemetery allowed sculptural monuments to be used to greater effect. Family plots (some outlined and some not) are arrayed throughout the 19th century section, often with a large family monument surrounded by smaller stones and enclosed by curbing. Neoclassical mourning motifs are evident in the widespread use of white marble and in the large number of carved pedestals, shafts, columns, obelisks and urns. Many of the simpler tablet stones are carved with standards neoclassical motifs of mourning figures (male and female), weeping willows, and urns.

The eastern section of the Brookfield Cemetery represents the aesthetic of the Modern Cemetery movement after 1900. To facilitate maintenance and management, the arrangement of burial plots is more regular. Family groupings are evident, but they are not set off by curbing or fences. Large sculptural monuments are rare with most burials marked by standard rough or

(continued)

**United States Department of the Interior
National Park Service**

**National Register of Historic Places
Continuation Sheet**

Section number 8 Page 3 Brookfield Cemetery
Brookfield, Worcester County, MA

polished granite headstones. The newer section also features many stones set flush with the ground in order to facilitate mowing and discourage vandalism.

Historical Background

The complex and rather unusual historical development of the present town of Brookfield has had a direct effect on the evolution of the cemetery. Early English travelers between Massachusetts Bay and the Connecticut River Valley noted the attractive agricultural lands of the Quaboag Valley. A group of colonists, predominantly from Ipswich, obtained a grant, known as Quaboag Plantation, in 1660 and began settling five years later. In 1673 the plantation, located more than 20 miles from the nearest European village, was incorporated as the town of Brookfield. The isolated settlement, centered on Foster's Hill, now West Brookfield, grew slowly until 1675, when it was attacked during King Philip's War and abandoned.

Brookfield still lay on an exposed frontier, and resettlement, though beginning in the 1680s, proceeded cautiously. In 1701 the town was expanded to an eight-mile square entity, and this grant was confirmed in 1719. Not until 1718 was Brookfield granted rights as a fully self-governing town. Three years earlier the inhabitants had begun erecting a church, situated on Foster's Hill, not far from the meetinghouse that had been burned in 1675.

A tendency toward fragmentation arose early in the sprawling, hilly town of Brookfield. In 1742 a chunk of territory in the southwest portion of town was set off as part of the new town of Western, now Warren. This left the meetinghouse near the western border and created additional discord within the remaining town. Inhabitants of the northern section formed a new (second) parish in 1750, but this only intensified disputes over the location of the meetinghouse in the remaining (south) parish.

(continued)

**United States Department of the Interior
National Park Service**

**National Register of Historic Places
Continuation Sheet**

Section number 8 Page 4 Brookfield Cemetery
Brookfield, Worcester County, MA

Eventually the congregation split over this issue, and in the mid-1750s new churches were built on Banister's Hill (now Brookfield) and "the plain" (now West Brookfield). The boundaries of precincts (administrative units) coincided with the parishes, and for unknown reasons the General Court of Massachusetts designated the precinct centered on Banister's Hill as the third. In time the terms precinct and parish became interchangeable and, although it may have had stronger continuity with the original organization, the Banister's Hill congregation became known as the third parish.

In accord with common practice, organization of precincts was a preliminary stage toward the formation of separate towns. North Brookfield (former second precinct) was organized as a town in 1812, and in 1848 West Brookfield (former first precinct) was formed. Even then, the process of division was not complete, and East Brookfield became a separate town in 1920. The result of this confusing pattern of development, as summarized by Rev. Abijah P. Martin, author of the Brookfields section of Jewett's 1879 History of Worcester County, was that "the most ancient events in the town's history belong to the youngest of the three towns, as they now exist [prior to the separation of East Brookfield]; and that part which bears the name of the original town is the youngest of the three in order of settlement and parochial organization."

Early Burying Grounds

Burial practices at Quaboag Plantation and early Brookfield are not well documented. Four people are known to have died before the 1675 attack, and a modern historian, Louis E. Roy, affirms that they were laid to rest in "a small burying ground some distance behind the meeting house, along the road leading away from the town."¹ He also surmises that victims of the Indian

¹Quaboag Plantation alias Brookefield, 73.

**United States Department of the Interior
National Park Service**

**National Register of Historic Places
Continuation Sheet**

Brookfield Cemetery
Section number 8 Page 5 Brookfield, Worcester County, MA

attack were buried in the same location, for a total of 16 graves. Prior to around 1720, interments presumably continued to take place at this "old burying ground" on Foster's Hill.

Early Development of the Brookfield Cemetery: Town Burying Ground

In 1714, while still under the governance of a "prudential committee," the townspeople set aside a plot of land for use as a burying ground. This action was confirmed by town meeting in July 1718, a few months before the town was granted full rights of self-government.² The land set aside at that time lies in the oldest (northwest) section of the present cemetery and has thus remained in use as a cemetery for nearly 300 years. Burials may have begun as early as 1720, although no surviving gravestones bear so early a date. Since the plot was dedicated for this use prior to the division of the town, it presumably contains burials from at least six present towns (four Brookfields, plus Warren and New Braintree).

When the town split into three parishes and precincts in the 1750s, it became necessary to divide the "ministerial lands," which had been reserved to provide additional income to the minister. The burying ground, located close to the boundary between the first and third precincts, lay within a tract of approximately 125 acres of ministerial land extending from the Quaboag River north to the road that generally preceded present Rt. 9.

Probably in anticipation of the division, the townspeople voted in October 1756 to stake out five acres within the ministerial lot for use as a burying place. Acting on the recommendation of a committee, the town accepted a division of the ministerial lands in 1758 under which the tract encompassing the burial ground was divided between the first and third precincts. The burial

(continued)

²J.H. Temple, History of North Brookfield, 83.

**United States Department of the Interior
National Park Service**

**National Register of Historic Places
Continuation Sheet**

Section number 8 Page 6 Brookfield Cemetery
Brookfield, Worcester County, MA

ground actually fell within, but was excluded from, the first precinct's portion. In the following year the three ministers surrendered any rights they had to the former ministerial lands, and in 1760 the town accepted the five-acre burial ground, as surveyed by James Whitcomb.

Most or all of the former ministerial lot around the burying ground apparently remained in public ownership. Town meeting minutes show that periodically efforts were made to lease this land, presumably for agricultural use. (The wetland portion of the tract could produce valuable fresh meadow hay.) The town meeting of May 14, 1787 chose a committee of three to lease the burying ground for a three-year term at vendue (public auction).

In addition to providing a source of revenue, townspeople hoped that the lessee would fence the burying ground. Despite approval of building a permanent wall around the area, nothing was done, and the 1787 town meeting voted "to estimate the sum of money that Capt. Upham pay the Town instead of the wall he was to build for the Burying ground." At the close of the 18th century, the area remained without a permanent fence.

Through the close of the 18th century, Brookfield, situated on a main road from the coast to the Connecticut Valley, remained one of the wealthiest and most important towns in Worcester County and had been a leader in the struggle for independence. In 1791 it claimed a population of about 3100--1000 more than the shire town of Worcester. As far as is known, all Brookfield burials continued to take place in the third precinct burial ground.

Rev. Thomas Cheney, Brookfield's first settled minister, who died in 1747, is buried to the right of the early entrance to the cemetery. Four of his successors, Nathan Fiske, first ordained minister of the third parish; Thomas Snell; John Fiske; and Micah Stone are also interred there, as are wives and other family members. One grave that has become legendary is that of Joshua Spooner, a respected resident of the town. He was murdered March 1, 1778, by three unemployed

(continued)

**United States Department of the Interior
National Park Service**

**National Register of Historic Places
Continuation Sheet**

Section number 8 Page 7 Brookfield Cemetery
Brookfield, Worcester County, MA

soldiers, at the instigation of his much younger wife, Bathsheba, who was pregnant by one of them. All four were executed for the crime. Bathsheba Spooner, reputedly the last woman to be hanged in Massachusetts, was refused burial in consecrated ground and according to legend was secretly buried somewhere on her sister's land.

Expressing the increasing affluence and civic-mindedness of the 19th century, Brookfield inhabitants sought to improve and regularize management of their burying ground. A committee appointed by town meeting in 1808 reported "that the Town should as soon as may be convenient compleat a good Wall adjoining the post Road and make a good and convenient gate for People to pass and repass to said burial ground and also to rebuild so much of the Fence on the East side of said burial ground, as may be compleated with the Rents now due . . ." The meeting approved a motion to use these rents to build and repair the fence. This indicates that the practice of renting space in the burial ground was already established, and also that the area was partially fenced.

Another clause of the article proposed granting the burial ground to the inhabitants of the third parish. The committee recommended against this, for the reason that "there are many People in the other Parishes that have buried their Friends in said ground." However, in 1814, after North Brookfield had split off, a similar article was approved, with the provision "reserving the liberty for such Families as now have a right to bury in said ground." In addition, some of the previous opposition was probably diluted by the opening of a separate burying ground in West Brookfield, with the first interment there occurring in 1809.

When the south precinct was split by the separation of West Brookfield in 1848, the burying ground remained entirely within Brookfield. A parish committee had apparently been responsible for conducting burials and for routine upkeep, and on March 7, 1853, the parish voted to "relinquish

(continued)

**United States Department of the Interior
National Park Service****National Register of Historic Places
Continuation Sheet**

Brookfield Cemetery
Section number 8 Page 8 Brookfield, Worcester County, MA

its rights in the Burying Ground that is so far as the fencing, improving, ornamenting, care and superintendence is concerned, to the Town of Brookfield . . ."³ The tract of land seems to have remained largely intact in public ownership, except for a "small piece" set off to Seth Banister in 1787. Although the record is not clear, small purchases by the town in 1866 and 1921 may have been intended to recover this land and square off the boundaries of the cemetery tract.

Victorian Town Cemetery

With the burying ground now exclusively the concern of one town, and against a background of elaborate Victorian funerary ritual, Brookfield soon took measures to improve management of the cemetery. Over the next several years, town meetings approved a series of measures to make administration of the site more efficient and to render its appearance more formal and dignified. As this process advanced, the character of the cemetery moved steadily away from its origins as a humble, utilitarian town burying ground in which the gravestones often expressed Puritan religious values.

In 1850 the town voted to procure a hearse and hearse house and in the following year paid \$112 for two hearse houses (plus \$6 for the foundations) and \$115 for the hearse. The location of the houses was not stated, but one was probably in East Brookfield. With the departure of West Brookfield, the remaining town contained two distinct villages, one on Banister's Hill and the other in East Brookfield. Generally the town attempted to equalize facilities between the two villages, although it rejected proposals to alternate town meetings.

A committee appointed in 1853 "to examine the burying grounds" recommended in the

(continued)

³History of the First Parish Church, Brookfield, Ma.

**United States Department of the Interior
National Park Service**

**National Register of Historic Places
Continuation Sheet**

Brookfield Cemetery
Section number 8 Page 9 Brookfield, Worcester County, MA

following year "that a good and permanent Stone Wall be made upon the south and east sides of said ground against land of Luther Stowell and David Perry." Its report found that "the north and west sides are now well fenced." In 1854 \$200 was spent for the walls, which at prevailing rates could have accomplished considerable work. By 1858 another \$408 had been spent to erect a "permanent fence" around the burial ground.

Another article on the April 1858 warrant proposed appointment of a committee "to arrange and stake off the Old burying ground, into proper sized lots and designate them by numbers, that the same may be properly assigned to individuals for the purpose of burial therein." The committee was formed and in 1860, acting on its report, the town appointed another committee to perform the survey. Completed by April 1861, the survey and division into family plots marked a significant step away from the communal aspirations of the early settlers and toward greater individualism.

The town meeting that took place on April 1, 1861--just days before the firing on Fort Sumter--made two further decisions that were critical in the transition to a more formal cemetery. First was the designation of a standing committee "to take charge of the burying ground." Previously, for more than a century, management of the burying ground had been conducted by temporary special committees, probably formed in response to observed problems. The standing committee evolved into the cemetery commission that has managed cemetery affairs ever since.

Another major and lasting improvement was the construction of a receiving tomb. The town appropriated a total of \$600 for two tombs, one in each village. They were built in 1861 under the supervision of Emmons Twichell, a member of the cemetery committee. There was clearly a faction in town that opposed building the tombs. In 1859, acting on the recommendation of a committee, the town had rejected a proposal to build a tomb. Instead, it voted to procure a bier and pall for each village, and this was presumably done. In June 1861, two months after approving the tomb, an

(continued)

**United States Department of the Interior
National Park Service****National Register of Historic Places
Continuation Sheet**

Brookfield Cemetery

Section number 8 Page 10 Brookfield, Worcester County, MA

article was introduced at a special town meeting to rescind the earlier vote, but it was not adopted. This may have represented a last stand by some who cherished the simplicity of the old burying ground. One who may have endorsed such sentiments was Rev. Lyman Whiting, a native of North Brookfield. Presenting an historical oration at the 200th anniversary observance of the founding of Brookfield in 1860, Dr. Whiting observed that in the old burying ground "In the true friendliness of fellow mortality, dust mingles with dust in common grave-yards, rather than in selfish, isolated little enclosures scattered over all the lands." Significantly, in 1867 town reports began referring to the site as a "cemetery," and the ancient term "burying ground," now an unwelcome reminder of more straitened times, fell into disuse.

The committee formed to construct the tombs reported proudly in April 1863 that they "have been built in the most thorough and enduring manner." Furthermore, the committee, "after consulting with many of the largest taxpayers in the Town," erected granite gateposts with new gates at the cemeteries. All this work in the two villages was accomplished for a total expenditure of \$588.

The wave of industrialization that surged over Massachusetts in the early 19th century largely bypassed Brookfield. Although the town lay along the Quaboag River, the absence of suitable waterpower sites deterred textile manufacturing. Leatherworking became important, with the first boot and shoe factory established in 1828. By the Early Industrial Period (1830-70) Brookfield had lost its former status as a local or regional core, despite its location on the Western Railroad, which arrived in 1839, and on a major highway. It remained, however, a prosperous agricultural community, with a population of 2660 and a valuation of \$1,244,769 in 1875. Ten years later the population rose above 3000.

Increasing wealth, the decline of Puritan restraint, the designation of separate family plots,

(continued)

**United States Department of the Interior
National Park Service**

**National Register of Historic Places
Continuation Sheet**

Brookfield Cemetery

Section number 8 Page 11 Brookfield, Worcester County, MA

the availability of professionally made and engraved monuments, joined with the massive social emphasis on proper memorialization, fostered a dramatic increase in ornate monumentation. This resulted in a distinctly visible contrast between the old burying ground and the sections of the cemetery developed in the mid- and late 19th century.

With the means and willingness to display their wealth, prominent citizens erected elaborate monuments, enclosures, and gravestones. Many of these conspicuous memorials represent high artistic achievement. Shoe manufacturers and other residents of outstanding homes in the Brookfield Common historic district are buried in the cemetery. Charles Fales, owner of a boot factory, occupies a family plot. Emmons Twichell, a shoe manufacturer who supervised the transformation of the cemetery, lies within a distinctively walled family plot. Members of the Banister family, which owned the area that is now the town Common, occupy another family plot. Among the other locally prominent individuals buried in the Brookfield cemetery are Pliny Merrick, founder of the town library, and Oliver Crosby, a wealthy landowner who represented the town in the General Court.

The movement to make the cemetery a dignified expression of civic pride and respectability culminated in the erection of the entrance gate in 1873. This substantial granite arch was the gift of William A. Banister and Otis Hayden. Banister, a Brookfield native, made his fortune in the dry goods business in New York City and in his later years spent summers in Brookfield. Hayden, though not a native, resided in Brookfield more than 50 years. He had died December 28, 1872. William Banister survived until 1890, and both men are buried in the same lot. In 1874 the town paid J.S. Sherman \$148.78 for work on the cemetery wall, probably in the area adjacent to the gate.

Undoubtedly influenced by famous cemeteries such as Mount Auburn, Brookfield residents apparently tried to a limited degree to emulate their tasteful, parklike atmosphere of repose. While

(continued)

**United States Department of the Interior
National Park Service**

**National Register of Historic Places
Continuation Sheet**

Brookfield Cemetery

Section number 8 Page 12 Brookfield, Worcester County, MA

they did not hire a landscape architect or follow a formal plan, they introduced plants and maintained natural contours. Family plots often displayed decorative features that enhanced the picturesque effect. The town may have contributed to this beautification effort. In 1856 voters approved spending town funds to plant willows along the "Causeway" over the Quaboag River. Perhaps cognizant of the tree's symbolism in representing mourning, the town may have later been responsible for planting the willows along the crossing of Willow Brook, just beyond the northwest corner of the cemetery.

The most memorable day in the history of the Brookfield cemetery was July 4, 1890, when the Civil War monument was dedicated. A large crowd followed 160 veterans to the site of the Grand Army lot, located in what was then the northeast corner of the cemetery. After the formal dedication, the procession marched to the Town Hall for further exercises, culminating in the singing of "America" by the assembly. Veterans of all America's wars are buried in the cemetery, and the graves are marked where possible. At least 33 veterans of the Civil War are known to be interred, the last, who died at the age of 87, joining his comrades in 1933. Placing the monument within the cemetery brings Memorial Day observances there and probably makes townspeople more aware of the cemetery than is true of towns that chose the more frequent location on the common or near the town hall.

Modern Cemetery

In the 20th century the predominant trend at the cemetery was the gradual opening up of new sections to the east and south. Meanwhile, in keeping with changing tastes, gravestones became more standardized and less ornate, so that the newer sections appear plainer and have less

(continued)

**United States Department of the Interior
National Park Service****National Register of Historic Places
Continuation Sheet**

Brookfield Cemetery

Section number 8 Page 13 Brookfield, Worcester County, MA

vertical relief.

After the leather processing industry declined in the 1880s, three woolen mills flourished in Brookfield. However, the town remained largely agricultural through the first half of the century, with dairying the dominant activity. As Worcester County became more industrial, Brookfield's relative importance within the county steadily shrank. In 1920, after the separation of East Brookfield, the remaining town showed a population of only 2216, in a county that had over 455,000 inhabitants. With little industry, Brookfield did not attract a large immigrant population. In 1915 the foreign-born population was less than 20%. This is evident in the cemetery, where the family names remained predominantly old-stock Yankee well into the 20th century. Only in the latter decades of the 20th century, as Brookfield became more suburban in character, did members of ethnic groups whose families had earlier come into the region as factory and agricultural workers become a substantial part of Brookfield's population.

Major expansions of the cemetery took place in the 1920s and the 1940s. By the mid-1930s there were 1006 burial lots, containing over 2250 monuments, headstones and markers. One family plot contains reinterments and monuments transferred in 1934 from North Dana, in one of the towns taken for the construction of Quabbin Reservoir. In 1941-42, 61 additional plots were laid out in the new easterly section and 40 more in the "open field westerly of the tool house," according to town annual reports. In 1952, 66 truckloads of fill created more new plots in the eastern section. With ease of maintenance undoubtedly a consideration, roadways laid out in the new areas were straight and parallel.

Under the management of the cemetery commission, characterized by long tenures, town funds were regularly appropriated for cemetery maintenance and improvement. In 1937 as a representative year, cemetery workers filled in and leveled 102 sunken graves, turfed around four

(continued)

**United States Department of the Interior
National Park Service**

**National Register of Historic Places
Continuation Sheet**

Brookfield Cemetery

Section number 8 Page 14 Brookfield, Worcester County, MA

monuments, trued 16 monuments to an upright position, cemented 12 headstones to base, cleaned 464 monuments and markers, excavated for ten cement foundations for monuments, removed from the ground 135 stone posts four to five feet in length to which iron fences had once been attached, raised and moved three deep markers, and white-lined 1232 letters and numerals.

Except for grass, plantings seem to have been allowed to fare for themselves during the early part of the 20th century, but in the 1930s more attention began to be devoted to this topic. One stimulus for this shift in emphasis was the severe cutting of vegetation by the State Highway Department. In the Winter of 1929-30 the Department asked permission to trim the trees along the wall at "Cemetery Curve" to allow the sun to shine through and free the curve of ice. To the dismay of the cemetery commission, highway crews proceeded to cut back a distance of 200 feet and trimmed some trees up to a height of 30 feet. After receiving protests from the town, the district engineer made restitution by planting numerous replacement trees and shrubs. Some of these plantings probably still survive.

The 1938 hurricane caused considerable devastation, bringing down or breaking off some 45 trees. Most of these were old trees, so that the new plantings of 1930 proved fortuitous. In 1939 a New Deal agency, the Civilian Conservation Corps, helped repair the hurricane damage and dynamite stumps. Removing massive trees and their root systems probably had the unanticipated benefit of creating more burial plots and stabilizing existing graves and monuments.

Encouraging grass and the resultant mowing became and has remained a major concern of the cemetery work force. Annual reports indicate that a water system was being installed in the early 1920s, but it is not clear whether this was an entirely new system or an addition. The commission purchased its first power mower in 1928 and in 1930 reported that it had been able for the first time to mow the entire cemetery and outside the wall, "except for two swamp sections." In

(continued)

**United States Department of the Interior
National Park Service**

**National Register of Historic Places
Continuation Sheet**

Brookfield Cemetery

Section number 8 Page 15 Brookfield, Worcester County, MA

a reversion to 18th century practice, the commission earned some income in 1932 by renting what was called "the pasture"--presumably the lower section toward the river.

Cemetery commissioners undertook regular improvements to roads and other facilities. Roads were added as new sections were opened, and the commission pursued a long-term effort to provide a hard surface for these roadways. In 1937 the middle avenue in the new eastern part was extended about 80 feet, and a crossover was built to the western avenue. More new avenues were laid out in 1942-44. As recently as 1996, a new road, Number 5, was constructed with grindings from a Rt. 9 reconstruction.

Cemetery workers also devoted considerable effort over the years to maintaining walls, gates, and other features. In 1937 a motorist crashed into the cast iron gates at the main entrance, "tearing off two of them and breaking them up badly." Whether or not related to this incident, the annual report for 1940 shows that a new foundation was built for the easterly arch at the granite gate. A 30-foot steel flagpole was set in concrete at the soldiers' monument in 1933, and this pole was replaced in 2000. A new sidewalk along the frontage was constructed in 1965. Increasing amounts of equipment led to the building of a new toolshed, probably the one now present, in 1975.

Draining and filling wetlands has provided a persistent challenge to cemetery managers. Although a finger of wetland has been retained to provide a picturesque feature in the western part of the cemetery, historical records indicate that other wet areas have been eliminated. Annual reports from the early 1930s show that over 1000 feet of trenches was dug in the area south of the receiving vault. More than 200 feet of trench was tiled and buried, while the remainder was left open. The result, as stated in the 1933 report was to make "the unsightly meadow and bog-hole an open plat of lawn nicely grassed over." The various cemetery expansions, particularly in the early 1950s, required large amounts of fill to create usable sites. Furthermore, it was reported in 1962 that

(continued)

**United States Department of the Interior
National Park Service**

**National Register of Historic Places
Continuation Sheet**

Brookfield Cemetery

Section number 8 Page 16 Brookfield, Worcester County, MA

"A large area of swamp land was filled by the Highway Dept. to make a parking area at the lower part of the cemetery."

The presence of wetland has a direct bearing on the cemetery's future prospects. Although the area actually used for cemetery purposes is only approximately one-third of the municipally owned tract, the apparent abundance of land may be deceptive. Much of the remainder is wet or, as the 2000 annual report pointed out, characterized by exposed bedrock. While, at the present rate of interments, there is ample space for some time to come, the cemetery may eventually encounter space problems. The 2000 report advised that there may be a need to designate the area containing surface rock "strictly for cremations."

Management of the Brookfield Cemetery is the responsibility of the Brookfield Cemetery Commission, a group of residents appointed by the town select board. Over the past few decades, maintenance has been limited to regular mowing and preparation of graves for burial. Trees, grave markers, and roads have been left untouched. In 2002, the cemetery commission, in collaboration with the Brookfield Historical Commission, completed a plan for preserving the cemetery landscape, which includes a phased program for maintaining trees, structures, roads, entrances, and other historic landscape features.

Stonecarvers and Known Makers

Several of the grave markers in the Brookfield Cemetery are particularly significant because they represent the work of known 18th century stonecarvers. The persistent cultural imagery and the wide variety of carving styles make 18th century New England gravestones a significant and distinguishable entity. The most important Brookfield examples have been published and described in some of the major reference works (cf. Bibliography).

(continued)

**United States Department of the Interior
National Park Service**

**National Register of Historic Places
Continuation Sheet**

Brookfield Cemetery
Section number 8 Page 17 Brookfield, Worcester County, MA

Known Carvers of Brookfield Gravestones (published references)

William Young (1711-1795), "the thistle-carver of Tatnuck [Worcester]" (Gillon, Early New England Gravestone Rubbings, Plates 50, 57, 58, 62, 169; and Ludwig, Graven Images, Plates 48A, 88 A&B, 89, 118B)

Beza Soule (1750-1835) of Brookfield, and related family of stonecutters (Gillon Early New England Gravestone Rubbings, Plate 115; and Ludwig, Graven Images, p. 355)

Ebenezer Howard (1734-1777+) of Newton (Chase & Gabel, Gravestone Chronicles)

Jonathan Worster (1707-1754) and his son Moses Worster (1739-1772+), both of Harvard, Mass. (Ludwig, Graven Images, p. 371)

Sikes family of Connecticut (Ludwig, Graven Images, p. 412-416)

Known Carvers of Brookfield Gravestones (unpublished notes of Peter Terry)

Amy Carey, Boston, Mass.
Collins family, Columbia, Conn.
B.H. Kinney, Worcester, Mass.
C.P. Risling (location unknown)
C. Sanford, Ware, Mass.
S. Soule, North Brookfield, Mass.
Tateum, Milford, Massachusetts
William Young, Worcester, Mass.

Most of the 18th century gravestones are upright slabs of native slate, sandstone, granite, or quartzite with an arched or shaped top. The carved face of the stone typically features side borders of vines, thistles, flowers, fruit, or geometric motifs. The arched top section may include a number of carved motifs such as memento mori (skulls, death's heads, hourglasses), stylized faces known as soul effigies (sometimes depicted with wings or crowns), salvation motifs (birds,

(continued)

**United States Department of the Interior
National Park Service****National Register of Historic Places
Continuation Sheet**

Brookfield Cemetery

Section number 8 **Page** 18 Brookfield, Worcester County, MA

trees), and geometric elements (pinwheels, scrolls, cross hatching). The center panel of the stone is reserved for the name, dates, and earthly station of the deceased. The lower section often includes a memorial tribute or a brief verse.

There is no scholarly consensus on whether the symbols and iconography of the 18th century carved stones have a direct religious significance, a broader secular connotation, or are simply intended to add beauty and interest to the stone. It is also important to note that many of the stones (including some 18th century examples and most of the 19th & 20th century examples) may have been partially pre-carved prior to their selection for a particular burial. Meandering vines, soul effigies, and even some standard verses may not have been specific to the deceased. In addition, the practice of back-dating stones and replacing deteriorated stones has been well documented in standard gravestone studies. Therefore, the date of burial does not always represent the date of the gravestone or marker.

Significant Burials

The Brookfield Cemetery is the final resting place of numerous individuals who played significant roles in Brookfield history. (Please refer to Section 8 for additional biographical details.) At least five Congregational ministers are buried in the Brookfield Cemetery. The most notable are Rev. Thomas Cheney (d. 1747, ae 57), who was pastor for more than 30 years, Rev. Jabez Upham (d. 1760 and honored with the only table stone in the cemetery), and the Rev. Nathan Fiske (d. 1799, ae 67), who passed away in his 42nd year of ministry to the 3rd Church (Brookfield Center).

Veterans of the Revolutionary War are buried throughout the 18th and 19th century sections of the cemetery. Among them are Colonel James Converse (d. 1811), Colonel Seth

(continued)

**United States Department of the Interior
National Park Service**

**National Register of Historic Places
Continuation Sheet**

Brookfield Cemetery

Section number 8 Page 19 Brookfield, Worcester County, MA

Banister (d. 1819), and Jason Walker (d. 1843).

Casualties of the Civil War are buried throughout the central 19th century section and in family plots in the older northwest section. 266 Brookfield volunteers served in the Civil War and 38 were killed in action or died from injuries. Among them were James K. Sargent (d. 1862 at Antietam, ae 19), John C. McClure (d. 1863 at Alexandria, ae 21), Corp. Henry W. Watson (d. 1864 at Richmond, ae 19), and Abner Wolcott (d. 1867) whose grave stone lies adjacent to the Civil War monument.

Community leaders from all periods of Brookfield history are also interred in the cemetery. Among the many notable names are eminent attorney Pliny Merrick (d. 1814), the Hon. Oliver Crosby (d. 1818), Dr. Tilly Rice (d. 1824), and the leading benefactors of the cemetery expansion, Otis Hayden (d. 1872) and William A. Banister (1890).

Also scattered throughout the cemetery are records of unusual deaths and notable events. The death of Margaret Bromfield from smallpox (1761) recalls one of the persistent plagues of the early settlement. The notorious murder of Joshua Spooner (d. 1778) is recalled by the inscription on a modern stone which now marks his grave:

Joshua Spooner, murdered March 1, 1778 by three soldiers of the Revolution, Ross, Brooks and Buchanan, at the instigation of his wife Bathsheba. They were all executed at Worcester, July 2, 1778

(Spooner's mutilated body was stuffed down the well and later retrieved. To this day, no grass will grow on his grave.)

Photography and Publication

Photographic records of significant stones in the Brookfield Cemetery are a particularly

(continued)

United States Department of the Interior
National Park Service

National Register of Historic Places
Continuation Sheet

Brookfield Cemetery

Section number 8 Page 20 Brookfield, Worcester County, MA

rich source of documentation. Several of the Brookfield grave markers have been described and illustrated in standard reference works. The stones selected for photography and publication are mostly 18th century stones by known carvers with representative or characteristic iconographic motifs. Since many of the stones have become less legible over time, the photographs are the most reliable source for study.

The seminal publication by Harriette M. Forbes, Gravestones of Early New England (1927) includes several Brookfield examples:

Joseph Ayres	1740	by William Young	(not illus.)
Joshua Nichols	1759	by William Young	(opposite p. 76)
Robert Cutler	1760/61	by William Young	(opposite p. 76)
Sarah Moore	1761	by William Young	(opposite p. 80)

The fundamental reference on New England gravestones is Dr. Alan Ludwig's Graven Images (1966). The third edition (1999) includes examples of several gravestones from Brookfield:

Robert Cutler	1761	by William Young	(pl. 118B)
Ephraim Walker	1777		(pl. 89)
Samuel & Mary Hinckley	1792		(pl. 88 A&B)
Dorothy Walker	1804		(pl. 48A)

Another standard reference, Chase & Gabel's Gravestone Chronicles (1997) includes a footnote reference to one Brookfield example (p. 175, not illus.):

Mary Cheney	1764	by Ebenezer Howard
-------------	------	--------------------

American Heritage Magazine (February 1960, p. 41) includes a photograph of a Brookfield stone with an angel motif.

There are also repositories of unpublished photographs of Brookfield gravestones. The H.M. Forbes Collection of Gravestone Photographs at the American Antiquarian Society, Worcester, Massachusetts, includes many of the images used in Gravestones of Early New

(continued)

**United States Department of the Interior
National Park Service**

**National Register of Historic Places
Continuation Sheet**

Brookfield Cemetery

Section number 8 Page 21 Brookfield, Worcester County, MA

England (1927) as well as unpublished examples.

The Phillips Library Collection of the Peabody Essex Museum, Salem, Massachusetts, includes images of gravestones photographed in the early 20th century by Edwin Haviland Miller.

Among the photos are several important Brookfield gravestones:

Lieut. Ephraim Walker	1777
Captain Thomas Gilbert	1793
Persis Hinckley	1793
Dorothy Walker	1804

The Winterthur Museum and Library in Winterthur, Delaware, is the repository for photographs by Dr. Allan Ludwig, author of Graven Images (550 prints, c. 1960) and Daniel Farber, one of the founders of the Association for Gravestone Studies (340 prints, c. 1954-1991). The Farber Collection is divided into two segments (manuscripts and decorative arts), but both contain Brookfield images:

Captain William Old	1749	
Robert Cutler	1761	by William Young of Tatnuck
Lieut. Ephraim Walker	1774	attrib. Sikes family of Connecticut
Job Hinckley	1783	
Mrs. Esperance Hastings	1789	
John Rice	1792	
Dorothy Walker	1804	attrib. Sikes family of Connecticut

The American Antiquarian Society in Worcester, Massachusetts, also holds a collection of gravestone photographs by Daniel and Jessie Lie Farber (available on CD-ROM). Many of the images were used by Chase and Gabel in Gravestone Chronicles I & II (1997).

The photograph collections are important because they show the gravestones in raking natural light that highlights the carving and inscriptions and because they provide a record of condition at that particular point in time.

(continued)

**United States Department of the Interior
National Park Service****National Register of Historic Places
Continuation Sheet**

Brookfield Cemetery

Section number 8 Page 22 Brookfield, Worcester County, MA**Archaeological Significance**

Historic archaeological resources described above have the potential to contribute detailed information on the initial use and internal configuration of the cemetery and social, cultural and economic characteristics of the Brookfield area population for over three centuries. Additional historic research combined with archaeological survey and testing may locate documentary and/or archaeological evidence that documents when the cemetery was first used. Burial practices at Quaboag Plantation and early Brookfield are not well documented. Structural evidence from construction and rebuilding of stone walls, builder's trenches and post holes from fence lines no longer extant, may help document the boundaries of the cemetery and family plots that either cannot be observed at present or have changed over time. Some individuals, especially paupers and unknown persons, may have been buried beyond the actual boundaries of the cemetery. Social, cultural and economic information may also be determined through detailed analysis of artifacts associated with individual graves, family areas, memorial services and skeletal evidence. Gravestones and their inscriptions may contribute important information related to gravestone art and the culture and religious beliefs of individuals, families and the community. Information related to economic status may also be obtained from gravestones and other funerary related artifacts. Skeletal evidence may also contribute important information on individuals and the community. Osteological studies may identify the general health and pathologies that affected various members of the community and the level of medical care that was available to different individuals and groups at various periods in the town's settlement.

(end)

United States Department of the Interior
National Park Service

National Register of Historic Places
Continuation Sheet

Section number 9 Page 1 Brookfield Cemetery
Brookfield, Worcester County, MA

MAJOR BIBLIOGRAPHICAL REFERENCES

Brookfield History

Annual Reports of the Town of Brookfield.

Crane, E.B. History of Worcester County, Massachusetts. (New York: 1924).

Eddy, Charles W. Brookfield Illustrated with Pen and Camera. (Ware, MA: 1886).

Hurd, D. Hamilton. History of Worcester County, Massachusetts. (Philadelphia: 1889).

Jewett, C.F. History of Worcester County, Massachusetts. (Boston: 1879).

Kingsley, E. & F. Knab. Picturesque Worcester. (Springfield, MA: 1895).

Nelson, John. Worcester County: A Narrative History. (New York: 1934).

Roy, Louis E. Quaboag Plantation alias Brookfield. (1965).

Systematic History Fund. Vital Records of Brookfield, Massachusetts to the end of the year 1849. (Worcester: Franklin P. Rice; 1909).

Maps & Plans

1830 Stebbins, *Map of Brookfield, Massachusetts* (corporate boundaries and major roads)

1855 Fagan, *Map of Brookfield, West Brookfield and North Brookfield*

1870 Beers, *Atlas of Worcester County, Massachusetts*

1885 Walker, *Atlas of Brookfield, West Brookfield, and North Brookfield, Massachusetts*

1898 Richards, *Atlas of Worcester County, Massachusetts*

(continued)

**United States Department of the Interior
National Park Service**

**National Register of Historic Places
Continuation Sheet**

Section number 9 Page 2 Brookfield Cemetery
Brookfield, Worcester County, MA

1904 Walker, *Atlas of Massachusetts*

1909 Walker, *Atlas of Massachusetts*

1922 Walker, *Atlas of Massachusetts*

n.d. Plan of lots, Brookfield Cemetery (central section only, probably c. 1930)

Cemeteries & Gravestone Art

(N.B.: Asterisks denote sources particularly relevant to the Brookfield Cemetery)

Benes, Peter. The Masks of Orthodoxy: Folk Gravestone Carving in Plymouth County, Massachusetts, 1689-1805. 1977.

*Benes (ed.), Peter. Puritan Gravestone Art I: The Dublin Seminar for New England Folklife, Annual Proceedings 1978. Boston: Boston University; 1976.

*Benes (ed.), Peter. Puritan Gravestone Art II: The Dublin Seminar for New England Folklife, Annual Proceedings 1978. Boston: Boston University; 1978.

*The Boston Experience: A Manual for Historic Burying Grounds Preservation. Boston Parks & Recreation Department, 1989.

*Chase, Theodore and Laurel K. Gabel. Gravestone Chronicles I & II: Some Eighteenth Century Gravestone Carvers and Their Work. Boston: New England Historic Genealogical Society; 1997.

Coffin Margaret M. Death in Early America: The History and Folklore of Customs and Superstitions of Early Medicine, Funerals, Burials, and Mourning. 1976.

Colvin, Howard. Architecture and the After-life. 1991.

*Curl, James Stevens. A Celebration of Death. New York: Charles Scribners Sons; 1980.

(continued)

**United States Department of the Interior
National Park Service**

**National Register of Historic Places
Continuation Sheet**

Section number 9 Page 3 Brookfield Cemetery
Brookfield, Worcester County, MA

Deetz, J.F. & E.S. Dethelsen. *Death's Head, Cherub, Urn, and Willow* in Natural History, no. 76, pp. 29-37. 1967.

*Duval, Francis Y. and Ivan B. Rigby. Early American Gravestone Art in Photographs: 200 Outstanding Examples. New York: Dover Publications, Inc.; 1978.

Folklore Forum: The Folklore of Death and Burial. Folklore Forum, 1998.

*Forbes, Harriette Merrifield. Gravestones of Early New England the Men Who Made Them, 1653-1800. Boston: Riverside Press of Houghton Mifflin; 1927 (reprint 1955).

French, Stanley. *The Cemetery as Cultural Institution: The Establishment of Mount Auburn and the Rural Cemetery Movement* in American Quarterly, no. 26, pp. 37-59. 1974.

*Gillon, Edmund Vincent Jr. Early New England Gravestone Rubbings. New York: Dover Publications, Inc.; 1966.

*Gillon, Edmund Vincent Jr. Victorian Cemetery Art. New York: Dover Publications, Inc.; 1972.

Grimmer, Anne E. A Glossary of Historic Masonry Deterioration Problems and Treatments. U.S. Dept. of the Interior / National Park Service, 1984.

Halporn, Roberta. Lessons From the Dead: The Graveyard as a Classroom for the Study of the Life Cycle. 1979.

Jackson, Kenneth T. and Camilo Jose Vergara. Silent Cities: The Evolution of the American Cemetery. 1989.

*Jacobs, G. Walker. Stranger Stop and Cast an Eye: A Guide to Gravestones and Gravestone Rubbing. Brattleboro, VT: The Stephen Greene Press; 1973.

Keister, Douglas. Going Out in Style: The Architecture of Eternity. 1997.

(continued)

United States Department of the Interior
National Park Service

National Register of Historic Places
Continuation Sheet

Section number 9 Page 4 Brookfield Cemetery
Brookfield, Worcester County, MA

Linden-Ward, Blanche. Silent City on a Hill: Landscapes of Memory and Boston's Mount Auburn Cemetery. 1989.

*Ludwig, Allan. Graven Images: New England Stonecarving and Its Symbols, 1650-1815. Hanover, NH: University Press of New England; 1966 (Third edition by Wesleyan University Press, 1999).

Meyer, Richard E. (ed.). Cemeteries and Gravemarkers: Voices of American Culture. 1989.

Mitford, Jessica. The American Way of Death. 1963.

*Olde-Time New England: Special Issue on Gravestone Carving, Vol. LXIV, No. 2 (October-December 1973). Boston: Society for the Preservation of New England Antiquities; 1973.

Sellers, Richard West. *Vigil of Silence: The Civil War Memorials in History News*, vol. 41, pp. 19-23. 1986.

*Slater, James A. "The Colonial Burying Grounds of Eastern Connecticut and the Men Who Made Them", in Memoirs of the Connecticut Academy of Arts and Sciences, Vol. XXI, (July 1987). Hamden, CT: Archon Books; 1987.

Sloane, Charles. The Last Great Necessity: Cemeteries in American History. 1995.

*Stannard, David E. The Puritan Way of Death: A Study in Religion, Culture and Social Change. 1977.

Strangstad, Lynette. A Graveyard Preservation Primer. AASLH/AGS, 1988.

Tashjian, Dickran and Ann. Memorials for Children of Change: The Art of Early New England Stonecarving. 1974.

*Terry, Peter (Brookfield Historical Commission). "Brookfield Cemetery" Massachusetts Historical Commission inventory form (Form E); December 1986.

(continued)

**United States Department of the Interior
National Park Service**

**National Register of Historic Places
Continuation Sheet**

Section number 9 Page 5 Brookfield Cemetery
Brookfield, Worcester County, MA

Wallis, Charles L. American Epitaphs: Grave and Humorous. 1973.

*Watters, David H. "With Bodilie Eyes": Eschatological Themes in Puritan Literature and Gravestone Art. Ann Arbor, MI: UMI Research Press; 1981.

*Watters, David H. (ed.) Markers III: The Journal of the Association for Gravestone Studies. [Includes: *Where the Bay Meets the River: Gravestones and Stonecutters in the River Towns of Western Massachusetts*, as well as *Speaking Stones: New England Grave Carving and the Emblematic Tradition*, and also "*And the Men Who Made Them*": *The Signed Gravestones of New England*.] 1985.

Wells, Charles Chauncey. Boston's Copp's Hill Burying Ground Guide. 1998.

Wilson, Susan. Garden of Memories: A Guide to Historic Forest Hills [Boston]. 1998.

Zielinski, A. K. Conservation of Cemeteries: The Treatment, Repair and Maintenance of Cemetery Objects and Their Environment. 1988.

(End)

BROOKFIELD CEMETERY

Name of Property

WORCESTER COUNTY, MA

County and State

10. Geographical DataAcreage of Property 43 acres**UTM References See continuation sheet.**

(Place additional UTM references on a continuation sheet)

1. Zone 18 Easting 738300 Northing 4677780

2. Zone 18 Easting 738380 Northing 4677720

3. Zone 18 Easting 738240 Northing 4677600

4. Zone 18 Easting 738200 Northing 4677580

5. Zone 18 Easting 738580 Northing 4677400

_ See continuation sheet

Verbal Boundary Description

(Describe the boundaries of the property on a continuation sheet.)

see attached

Boundary Justification

(Explain why the boundaries were selected on a continuation sheet.)

see attached

11. Form Prepared Byname/title Martha Lyon, Larry Lowenthal, & Gregory Farmer (consultants) with Betsy Friedberg, NR Director, MHCorganization Massachusetts Historical Commission date March 2003street & number 220 Morrissey Boulevard telephone 617-727-8470city or town Boston state Massachusetts zip code 02125-3314**Additional Documentation**

Submit the following items with the completed form:

Continuation Sheets**Maps**A **USGS map** (7.5 or 15 minute series) indicating the property's location.A **sketch map** for historic districts and properties having large acreage or numerous resources.**Photographs** - Representative **black and white photographs** of the property.**Additional items** (Check with the SHPO or FPO for any additional items)**Property Owner**

(Complete this item at the request of the SHPO or FPO.)

name Town of Brookfieldstreet & number Town Hall telephone 508-867-8004city or town Brookfield state MA zip code 01506**Paperwork Reduction Act Statement:** This information is being collected for applications to the National Register of Historic Places to nominate properties for listing or determine eligibility for listing, to list properties, and to amend existing listings. Response to this request is required to obtain a benefit in accordance with the National Historic Preservation Act, as amended (16 U.S.C. 470 et seq.).**Estimated Burden Statement:** Public reporting burden for this form is estimated to average 18.1 hours per response including the time for reviewing instructions, gathering and maintaining data, and completing and reviewing the form. Direct comments regarding this burden estimate or any aspect of this form to the Chief, Administrative Services Division, National Park Service, P.O. Box 37127, Washington, DC 20013-7127; and the Office of Management and Budget, Paperwork Reductions Project (1024-0018), Washington, DC 20503.

**United States Department of the Interior
National Park Service**

**National Register of Historic Places
Continuation Sheet**

Section number 10 Page 1 Brookfield Cemetery
Brookfield, Worcester County, MA

VERBAL BOUNDARY DESCRIPTION:

The boundaries of the nominated district are shown as a penciled line on the accompanying Assessors Maps of the Town of Brookfield, Map 6B, Parcel 10 (continued on Map 7B). Starting at the northwest corner of the cemetery and the main road (Route 9), the cemetery boundary runs southeast along the highway boundary a distance of approximately 1,000 feet, then continues south for a distance of approximately 1,800 feet to the railroad right-of-way, then runs northwest along the railroad corridor a distance of approximately 1,000 feet, then returns north and north-northeast a distance of approximately 2,000 feet to the point of beginning.

BOUNDARY JUSTIFICATION:

The boundaries of the National Register nomination delineate the developed and undeveloped areas of the Brookfield Cemetery as it has been used from the mid-18th century to the present, a total of 43 acres.

The northern boundary follows the stone wall and frontage along Route 9 (approx. 1000 ft.). The eastern boundary follows the eastern edge of the parcel (including the 1942 expansion) to the railroad right-of-way along the Quaboag River. The southern boundary parallels the northern along the railroad corridor. The western boundary is defined by a stone wall and hedgerow along the western edge of the parcel.

The parcels that border the cemetery on the west, north, and east are privately owned and represent a range of commercial, residential, and agricultural uses. The cemetery parcel is bounded on the south by the former Conrail railroad tracks adjacent to the Quaboag River.

(end)

BROOKFIELD CEMETERY
 Brookfield
 Worcester County, Massachusetts

DATA SHEET

Note: The following list represents a representative sample of grave markers at the Brookfield Cemetery. All resources contained in the data sheet can be found on Town of Brookfield Assessors' Map #6B-10. pub. = published in

SECTION	RESOURCE	YEAR	MAKER	MATERIAL / FORM	NOTES	TYPE	STATUS
	BROOKFIELD (MASS.) CEMETERY	1714 & later			43 acres	Site	C
NW	Old Burying Ground (NW section)	1714			5 acres		
N	First expansion (middle section)	1861					
NE	Second expansion (east section)	c. 1920					
NE	Third expansion (east section)	1942					
S	Fourth expansion (south section)	1952					
	ARCHITECTURAL ELEMENTS						
N	North Wall	1855		Fieldstone and granite		Struc.	C
NW	West Wall	1855		Fieldstone		Struc.	C
NW	Entrance Gate	1873		Granite & iron		Struc.	C
NW	Town Vault	1861		Granite & iron	built into knoll	Struc.	C
S	Maintenance Shed	1975		Wood		Bldg.	NC
	LANDSCAPE ELEMENTS						
	Terrace & retaining walls	c. 1860		Dirt and stone		Struc.	C
	Roadways	1920 & later		Dirt, gravel, asphalt		Struc.	C
	Pathways	1861 & later		Grass & dirt		Struc.	C
	SCULPTURAL ELEMENTS						
N	Civil War Memorial	1890		Zinc		Obj.	C
N	Memorial Bench: Meth. Episc. Church	c. 1900		Marble		Obj.	C
	GRAVESTONES & MARKERS						
N1	Abner Wolcott	1867		marble tablet (flat in ground)	Civil War veteran	Obj.	C
N2	Daniel E. Adams	1888		granite obelisk		Obj.	C
N3	Fales & Crosby	1899		granite obelisk	Family plot - 14 markers	Site	C
N4	Edwin Rice	1897		marble column w/ garland, urn & bird	Family plot - 1 marker	Site	C
N5	Willie Phipps Vizard	1873		marble tree cross & vine		Obj.	C
N6	Butterworth	1882		granite posts	Family plot	Site	C
N7	James K. Sargeant	1862		white bronze plinth	Civil War - at Antietam ae 19	Obj.	C
N8	Zebediah Allen	1839		sandstone obelisk	Family plot - 24 markers	Site	C

BROOKFIELD CEMETERY

Brookfield

Worcester County, Massachusetts

DATA SHEET

N9	Freedom N. Upham	1902		marble tablet		Obj.	C
N10	Albert C. Blanchard	1871		marble plinth & urn	Family plot - 13 markers	Site	C
N11	Jonas Allen	1885		granite plinth & border		Obj.	C
N12	Deacon Eleazer W. Estey	1906		polished granite ball on plinth		Obj.	C
N13	Esperience Hastings	1789		slate / effigy & vines		Obj.	C
N14	Zebediah Allen	1882		red granite obelisk	Family plot - 4 markers	Site	C
N15a	Colonel Seth Banister	1819		slate tablet	Rev. War veteran	Obj.	C
N15b	Major Liberty Banister	1849		marble tablet	Family plot - 11 markers	Site	C
N16	Daniel Hale	1867		marble obelisk	Family plot - 2 markers	Site	C
N17	Flanders & Barrows	1897		pink granite plinth & urn	Family plot	Site	C
N18	Cooley & Blanchard	1815		marble tablets	Family plot - 7 markers	Site	C
N19	Jason Walker	1843		marble tablet	Rev. War veteran	Obj.	C
N20	James Sherman	1888		marble plinth	Family plot - 2 markers	Site	C
N21	Caleb Marsh	1814		marble tablet	Family plot - 3 markers	Site	C
N22	Samuel Bemis	1869		granite plinth & curb	Family plot	Site	C
N23	Pliny Merrick	1814		sandstone block	Eminent lawyer, Harvard grad.	Obj.	C
N24	Henry L. Mellen	1881	Monu. Bronze Co.	white bronze obelisk		Obj.	C
N25	C. Fales	1866		granite obelisk	Family plot - 4 markers	Site	C
N26	Tilly Rice	1824		sandstone block	Mounded tomb	Obj.	C
N27	Town Lot (historical name, likely referring to a paupers' field)	n.d.		none visible	adjacent to wetland	Site	C
NW1	Corp. Henry W. Watson	1864		marble tablet	Civil War - at Richmond ae 19	Obj.	C
NW2	Lydia Kimball	1874		marble obelisk	Family plot - 2 markers	Site	C
NW3	George Clapp	1861		marble obelisk	Family plot	Site	C
NW4	John Robinson	1840		marble obelisk	Family plot - 3 markers	Site	C
NW5	Aaron Kimball	1866		marble obelisk	Family plot - 9 markers	Site	C
NW6	Emmons Twichell	1891		sandstone obelisk	Family plot - 22 markers	Site	C
NW7	Town Vault	1861		granite & iron	Built into knoll	Struc.	C
NW8	Abel Wheeler Reed	1872		marble plinth	Family plot - 3 markers	Site	C
NW9	Rev. Nathan Fiske	1799		slate / urn and vines		Obj.	C
NW10	Joshua Spooner	1778		marble tablet	Murder victim	Obj.	C
NW11	Rev. Jabez Upham	1760		slate table stone		Obj.	C
NW12	Dr. Thomas Weld	1756		slate tablet	Crown Point expedition	Obj.	C
NW13	Hannah Ayres	1748		slate / effigy & geom.		Obj.	C
NW14	Rev. Thomas Cheney	1747		slate / winged skull		Obj.	C
NW15	Ensign Robert Cutler	1761	William Young	slate / effigy & birds	pub: Forbes, Ludwig	Obj.	C
NW16	Capt. Thomas Buckminster	1765		sandstone / winged & crowned effigy		Obj.	C
NW17	Mrs. Martha Cooley	1768		sandstone / winged effigy	Broken stone	Obj.	C

BROOKFIELD CEMETERY

Brookfield

Worcester County, Massachusetts

DATA SHEET

NW18	Gilmore	1862		granite obelisk	Family plot	Site	C
NW19	Hayden & Banister	1872		granite plinth & curb	Family plot	Site	C
NW20	Abraham Skinner	1875		granite plinth & posts	Family plot	Site	C
NW21	Johnson	1869		marble w/ granite curb	Family plot - 24 markers	Site	C
NW22	Seth Banister	1783		slate / 5 draped urns	Family plot - 1 marker	Site	C
NW23	Hinckley grouping					Site	C
NW23a	Job Hinckley	1753		slate / effigy & geom.		Obj.	C
NW23b	Sarah Hinckley	1784		slate / winged effigy		Obj.	C
NW23c	Samuel Hinckley	1798		marble / effigy & vines	pub: Ludwig	Obj.	C
NW23d	Abigail Hinckley	1780		sandstone / winged & crowned effigy		Obj.	C
NW23e	Mary Hinckley	1798		marble / effigy & vines	pub: Ludwig	Obj.	C
NW23f	Job Hinckley	1783		sandstone / winged & crowned effigy		Obj.	C
NW23g	Persis Hinckley	1793		marble / winged effigy		Obj.	C
NW23h	Persis Hinckley (child)	c. 1790		marble / spiral geom.		Obj.	C
NW23i	Rebecca Hinckley	1794		slate / winged effigy		Obj.	C
NW24	Converse grouping					Site	C
NW24a	Hannah Converse	1747		slate / effigy & geom.		Obj.	C
NW24b	Dorothy Converse	1755		slate / effigy & geom.		Obj.	C
NW24c	Josiah Converse	1771		slate / winged effigy		Obj.	C
NW24d	Col. James Converse	1811		slate / willow & urn	Rev. War veteran	Obj.	C
NW24e	Dolly Converse	1819		slate / willow & urn		Obj.	C
NW25a	Thankful Watson	1766		sandstone / winged & crowned effigy		Obj.	C
NW25b	Sarah Watson	1765		sandstone / winged & crowned effigy		Obj.	C
NW26	Williston grouping					Site	C
NW26a	Mrs. Lucy Williston	1782		slate / winged effigy		Obj.	C
NW26b	Mrs. Martha Williston	1785		slate / urn & willow		Obj.	C
NW26c	Deacon Gad Williston	1823?		marble tablet	Fallen stone	Obj.	C
NW26d	Joseph Williston	1833		marble tablet		Obj.	C
NW27	Walker grouping					Site	C
NW27a	Lt. Ephraim Walker	n.d.		quartzite / hourglass		Obj.	C
NW27b	Dorothy Walker	1804	attrib: Sikes	quartzite / crowned effigy & vines	pub: Ludwig	Obj.	C
NW27c	Lt. Ephraim Walker	1777	attrib: Sikes	quartzite / effigy & vines	pub: Ludwig	Obj.	C
NW27d	Bathsheba Walker	1839		slate / willow & urn		Obj.	C
NW28a	Jonathan Moore	1786		slate / effigy & vines		Obj.	C
NW28b	Sarah Moore	1761	William Young	slate / effigy & vines	pub: Forbes	Obj.	C
NW29a	Bartlett / McClure	1846		marble w/ granite curb	Family plot - 8 markers	Site	C
NW29b	John C. McClure	1863		marble tablet	Civil War - at Alexandria ae 21	Obj.	C
NW30	Brigham	1848		granite obelisk	Family plot	Site	C

BROOKFIELD CEMETERY
 Brookfield
 Worcester County, Massachusetts

DATA SHEET

NW31	Liberty Rice	1832		slate / willow & urn		Obj.	C
NW32	Rev. Fayette Nichols	1919		marble column	Family plot	Site	C
NW33	Joseph Ayres ae 85	1740	William Young	slate / effigy	pub: Forbes	Obj.	C
NW34	Joshua Nichols ae 63	1759	William Young	slate / effigy & vines	pub: Forbes	Obj.	C
NW35	Mary Cheney ae 34	1764	Ebenezer Howard	slate / winged effigy	pub: Chase & Gabel	Obj.	C
NW36	Capt. Thomas Gilbert	1793		marble / winged effigy	Farber coll.	Obj.	C
NW37	Capt. William Old	1749		slate / effigy & crossbones	Farber coll.	Obj.	C
NW38	Margaret Bromfield	1761		slate / winged skull & vines	Smallpox victim	Obj.	C
	SUMMARY				CONTRIBUTING	NON-CONTRIBUTING	TOTAL
	Buildings				0	1	1
	Sites				38	0	38
	Structures				8	0	8
	Objects				59	0	59
	TOTAL RESOURCE COUNT				105	1	106

**United States Department of the Interior
National Park Service**

**National Register of Historic Places
Continuation Sheet**

Section number _____ Page _____

SUPPLEMENTARY LISTING RECORD

NRIS Reference Number: 03000384

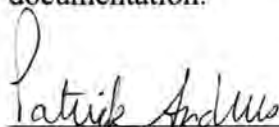
Date Listed: 5/9/2003

Property Name: Brookfield Cemetery

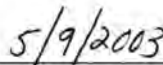
County: Worcester State: MA

Multiple Name

This property is listed in the National Register of Historic Places in accordance with the attached nomination documentation subject to the following exceptions, exclusions, or amendments, notwithstanding the National Park Service certification included in the nomination documentation.



Signature of the Keeper



Date of Action

Amended Items in Nomination:

The cemetery is nominated under National Register Criteria A and C for the areas of significance of Architecture, Community Planning and Development, Landscape Architecture, and Social History. The State agrees that Art is a more appropriate reflection of the cemetery's importance than Architecture, so Art is added as an area of significance and architecture is deleted.

DISTRIBUTION:

National Register property file

Nominating Authority (without nomination attachment)

UNITED STATES DEPARTMENT OF THE INTERIOR
NATIONAL PARK SERVICE

NATIONAL REGISTER OF HISTORIC PLACES
EVALUATION/RETURN SHEET

REQUESTED ACTION: NOMINATION

PROPERTY NAME: Brookfield Cemetery

MULTIPLE NAME:

STATE & COUNTY: MASSACHUSETTS, Worcester

DATE RECEIVED: 3/27/03 DATE OF PENDING LIST: 4/23/03
DATE OF 16TH DAY: 5/09/03 DATE OF 45TH DAY: 5/11/03
DATE OF WEEKLY LIST:

REFERENCE NUMBER: 03000384

REASONS FOR REVIEW:

APPEAL: N DATA PROBLEM: N LANDSCAPE: N LESS THAN 50 YEARS: N
OTHER: N PDIL: N PERIOD: N PROGRAM UNAPPROVED: N
REQUEST: N SAMPLE: N SLR DRAFT: Y NATIONAL: N

COMMENT WAIVER: N

ACCEPT RETURN REJECT 5/9/2003 DATE

ABSTRACT/SUMMARY COMMENTS:

RECOM./CRITERIA accept

REVIEWER Patrick Andrews DISCIPLINE Historian

TELEPHONE _____ DATE 5/9/2003

DOCUMENTATION see attached comments Y/N see attached SLR Y/N

581



PHOTO #1

BROOKFIELD CEMETERY

BROOKFIELD, WORCESTER COUNTY, MASSACHUSETTS

PHOTOGRAPHER: LARRY LOWENTHAL - DECEMBER 2001

THE 1873 GATE TAKEN FROM THE NORTH EDGE OF ROUTE 1,
LOOKING SOUTH.



PHOTO #2

BROOKFIELD CEMETERY

BROOKFIELD, WORCESTER COUNTY, MASSACHUSETTS

PHOTOGRAPHER: LARRY LOWENTHAL, DECEMBER 2001

THE TURF AND DIRT CEMETERY CART PATH TAKEN FROM
INSIDE THE 1873 GATE, WORKING SOUTH.



PHOTO #3

BROOKFIELD CEMETERY

BROOKFIELD, WORCESTER COUNTY, MASSACHUSETTS

PHOTOGRAPHER: LARRY LOWENTHAL - DECEMBER 2001

THE CEMETERY LANDSCAPE TAKEN FROM THE NORTH
EDGE OF THE NEWEST SECTION, LOOKING WEST ACROSS
THE 18TH AND 19TH CENTURY SECTIONS.



PHOTO #4

BROOKFIELD CEMETERY

BROOKFIELD, WORCESTER COUNTY, MASSACHUSETTS

PHOTOGRAPHER: LARRY LOWENTHAL - DECEMBER 2001

THE 1890 CIVIL WAR MONUMENT TAKEN FROM THE CENTER
CEMETERY ENTRANCE, LOOKING SOUTHWEST.



PHOTO #5

BROOKFIELD CEMETERY

BROOKFIELD, WORCESTER COUNTY, MASSACHUSETTS

PHOTOGRAPHER: LARRY LOWENTHAL, DECEMBER 2001

THE BLANCHARD FAMILY PLOT, WORKING WEST



PHOTO #6

BROOKFIELD CEMETERY

BROOKFIELD, WORCESTER COUNTY, MASSACHUSETTS

PHOTOGRAPHER: ARRY LOWENSTAL, DECEMBER 2001

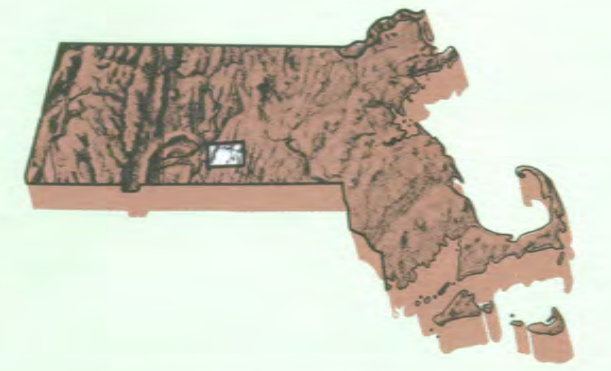
THE EDWIN RICE FAMILY PLOT, WORKING NORTHEAST



Worcester County MA
UTMs:
1) 18 E 738300 N 4677700
2) 18 E 738380 N 4677720
3) 18 E 738240 N 4677600
4) 18 E 738200 N 4677580
5) 18 E 738580 N 4677400
UTM coordinates 310108
1) 18 738284 4678107
2) 18 738245 4677965
3) 18 738435 4677475
4) 18 738233 4677697
5) 18 738126 4677855

Warren MASSACHUSETTS

1:25 000-scale metric topographic map



7.5 X 15 MINUTE QUADRANGLE SHOWING

- Contours and elevations in meters
 - Highways, roads and other
- BROOKFIELD CEMETERY
BROOKFIELD
WORCESTER COUNTY MASSACHUSETTS



1982

Produced by the United States Geological Survey in cooperation with Massachusetts Department of Public Works
Control by USGS, NOS/NOAA, and Massachusetts Geodetic Survey
Compiled by photogrammetric methods from aerial photographs taken 1980. Field checked 1981. Map edited 1982
Supersedes Warren and East Brookfield 1:25,000-scale maps dated 1969

Projection and 1000-meter grid, zone 19: Universal Transverse Mercator
10,000-foot grid ticks based on Massachusetts coordinate system, mainland zone, 1927 North American Datum
To place on the predicted North American Datum 1983 move the projection lines 6 meters south and 39 meters west as shown by dashed corner ticks
There may be private inholdings within the boundaries of the National or State reservations shown on this map
CONTOUR INTERVAL, 3 METERS
NATIONAL GEODETIC VERTICAL DATUM OF 1929
CONTROL ELEVATIONS SHOWN TO THE NEAREST 0.1 METER
OTHER ELEVATIONS SHOWN TO THE NEAREST 0.5 METER

THIS MAP COMPLES WITH NATIONAL MAP ACCURACY STANDARDS

FOR SALE BY U.S. GEOLOGICAL SURVEY
DENVER, COLORADO 80225, OR RESTON, VIRGINIA 22092

Meters	Feet
1	3.2808
2	6.5617
3	9.8425
4	13.1234
5	16.4042
6	19.6850
7	22.9659
8	26.2467
9	29.5275
10	32.8084

To convert meters to feet multiply by 3.2808
To convert feet to meters multiply by 0.3048

UTM grid convergence (0.8 m) at center of map
Diagram is approximate

ADJOINING MAPS	1	2	3
1	West Brookfield	Worcester North	Worcester South
2	North Brookfield	Worcester North	Worcester South
3	Worcester North	Worcester South	Southbridge
4	Worcester North	Worcester South	Worcester South
5	Worcester North	Worcester South	Worcester South
6	Worcester North	Worcester South	Worcester South
7	Worcester North	Worcester South	Worcester South
8	Worcester North	Worcester South	Worcester South



Topographic Map Symbols

- Primary highway, hard surface
- Secondary highway, hard surface
- Light-duty road, hard or improved surface
- Unimproved road, trail
- Route marker: interstate; U.S.; State
- Railroad: standard gage; narrow gage
- Bridge, drawbridge
- Footbridge, overpass, underpass
- Build-up area: only selected buildings shown
- House; barn; church; school; large structure
- Boundary:
 - National, with monument
 - State
 - County, parish
 - Civil township, precinct, district
 - Incorporated city, village, town
 - National or State reservation, small park
 - Land grant with monument; found section corner
 - U.S. public lands survey; range, township; section
 - Range, township; section line; location approximate
- Face or field line
- Power transmission line, located tower
- Dam; dam with lock
- Cemetery; grave
- Campground; picnic area; U.S. location monument
- Windmill; water well; spring
- Mine shaft; prospect; adit or cave
- Control: horizontal station; vertical station; spot elevation
- Contours: index, intermediate; supplementary; depression
- Distorted surface: strip mine, levee, sand
- Bathymetric contours: index, intermediate
- Perennial lake and stream; intermittent lake and stream
- Rapids, large and small; falls, large and small
- Submerged marsh; marsh, swamp
- Land subject to controlled inundation; woodland
- Scrub; mangrove
- Orchard; vineyard

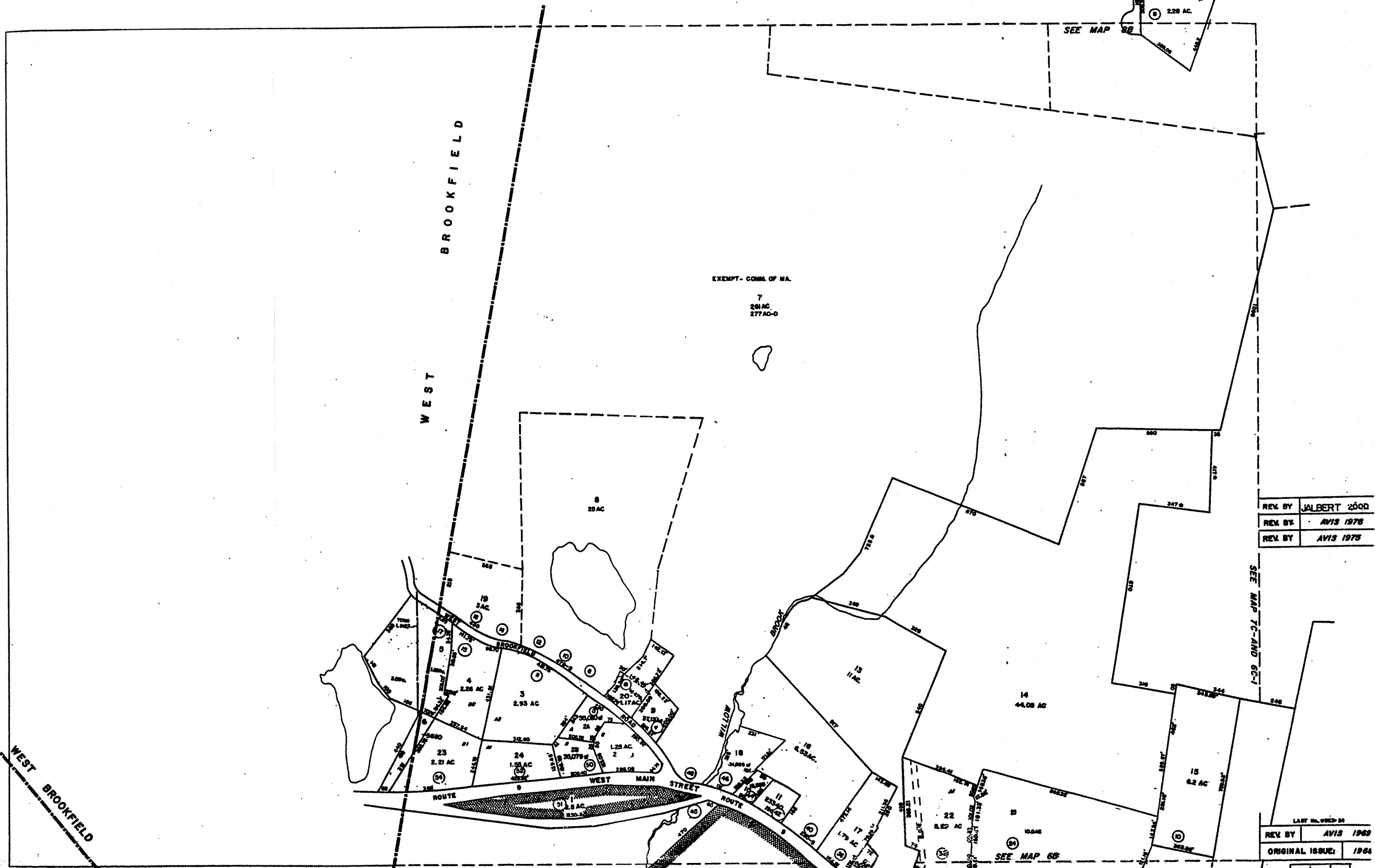
A pamphlet describing topographic maps is available on request

SCALE 1:25 000
1 CENTIMETER ON THE MAP REPRESENTS 250 METERS ON THE GROUND
CONTOUR INTERVAL, 3 METERS

WARREN, MASS.
42072-B1-TM-025

1982

TOWN OF BROOKFIELD, MASSACHUSETTS
ASSESSORS MAPS

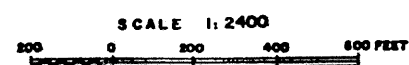


REV BY	JALBERT	2000
REV BY	AVIS	1978
REV BY	AVIS	1978

REV BY	AVIS	1969
ORIGINAL ISSUE:		1964

68	6C
7A	7C
6B	6C

PREPARED UNDER THE DIRECTION OF
 THE BROOKFIELD BOARD OF ASSESSORS
AVIS AIRMAP INC.
 BROOKLINE MASS.
 E. HARTFORD CONN.



10/10/10 10:00 AM





The Commonwealth of Massachusetts
William Francis Galvin, Secretary of the Commonwealth
Massachusetts Historical Commission

March 24, 2003

Ms. Carol Shull
National Register of Historic Places
Department of the Interior
National Park Service
1201 Eye Street, NW, 8th floor
Washington, DC 20005

Dear Ms. Shull:

Enclosed please find the following nomination form:

Brookfield Cemetery, Main Street, Brookfield (Worcester), MA

The nomination has been voted eligible by the State Review Board and has been signed by the State Historic Preservation Officer. The owners of the property were notified of pending State Review Board consideration 30 to 45 days before the meeting and were afforded the opportunity to comment.

Sincerely,

A handwritten signature in cursive script that reads "Betsy Friedberg".

Betsy Friedberg
National Register Director
Massachusetts Historical Commission

enclosure

cc: Martha Lyon, Paysage, consultant
Gregory Farmer, Agricola Corp.
Larry Lowenthal
Floyd Mores, Board of Selectmen
Ron Couture, Brookfield Historical Commission
Mary T. O'Connell, Planning Board Chair

220 Morrissey Boulevard, Boston, Massachusetts 02125
(617) 727-8470 • Fax: (617) 727-5128
www.state.ma.us/sec/mhc