



Mindoro Cot

LaCrosse Co., WI

Photo # 1 of 19



Mindoro Cut

LaCrosse Co., WI

Photo # 2 of 19



Mindoro Cut

La Crosse Co., WI

Photo # 3 of 19



Mindoro Cut
Le Crosse Co., WI
Photo # 4 of 19



Mindoro Cut
LaCrosse Co., WI
Photo # 5 of 19



Mindoro Cot
LaCrosse Co., WI
Photo # 6 of 19

THE MINDORO CUT



This cut, located at the highest point on state highway 10B between Mindoro and West Salem, is 74 feet deep and 25 feet wide. It was hand-hewn out of hard rock in 1907-08. All work was completed with only horse-drawn equipment and hand tools. As far as known it is the second largest hand-hewn cut in the nation.

Copyright © 1988

Mindoro Cut
La Crosse Co., WI
Photo # 7 of 19



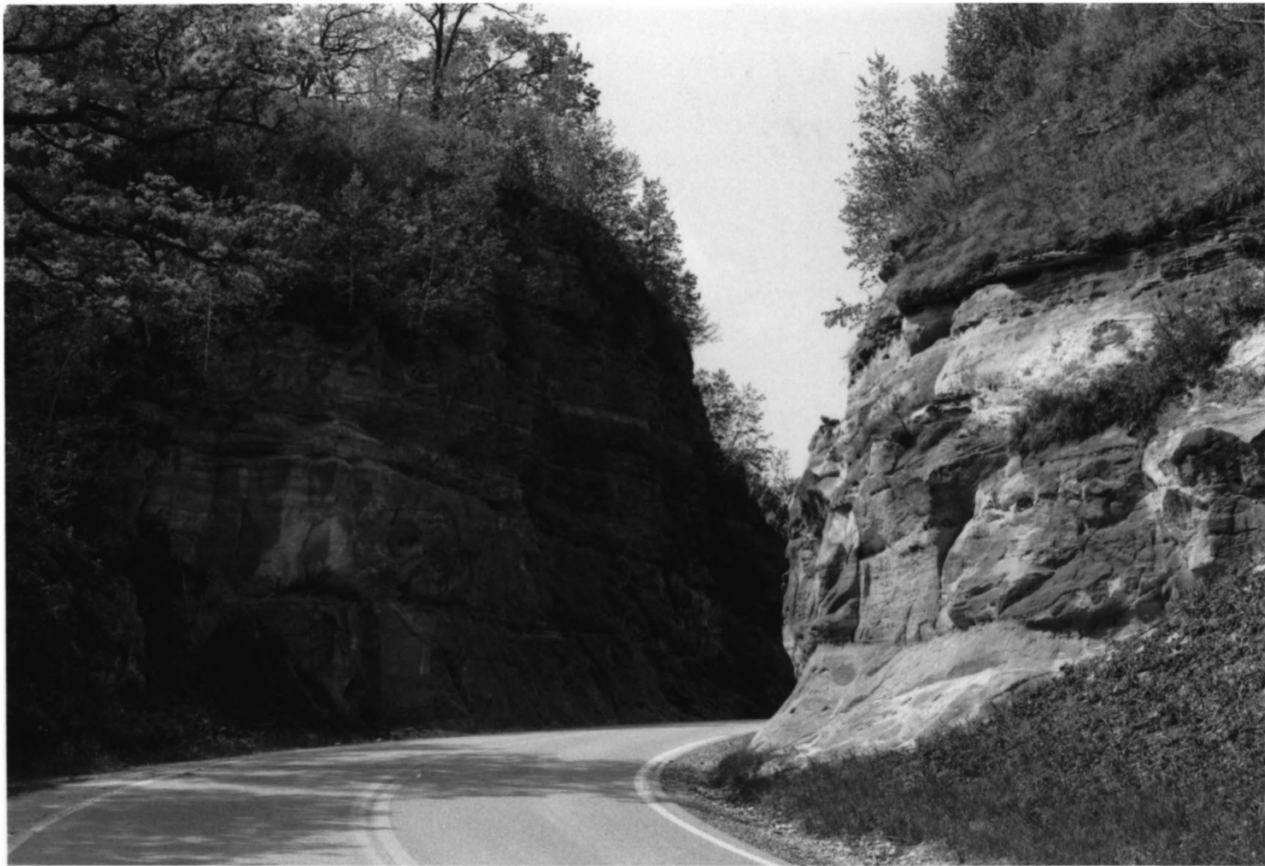
Mindoro Cut
La Crosse Co., WI
Photo # 8 of 19



Mindoro Cut
LaCrosse Co., WI
Photo # 9 of 19



Mindoro Cut
LaCrosse Co., WI
Photo # 10 of 19



Mindoro Cut
La Crosse Co., WI
Photo # 11 of 19



Mindoro Cut
La Crosse Co., WI
Photo # 12 of 19



Mindoro Cut
LaCrosse Co., WI
Photo # 13 of 19



Mindoro Cut
La Crosse Co., WI
Photo # 14 of 19



Mindoro Cut
La Crosse Co., WI
Photo # 15 of 19



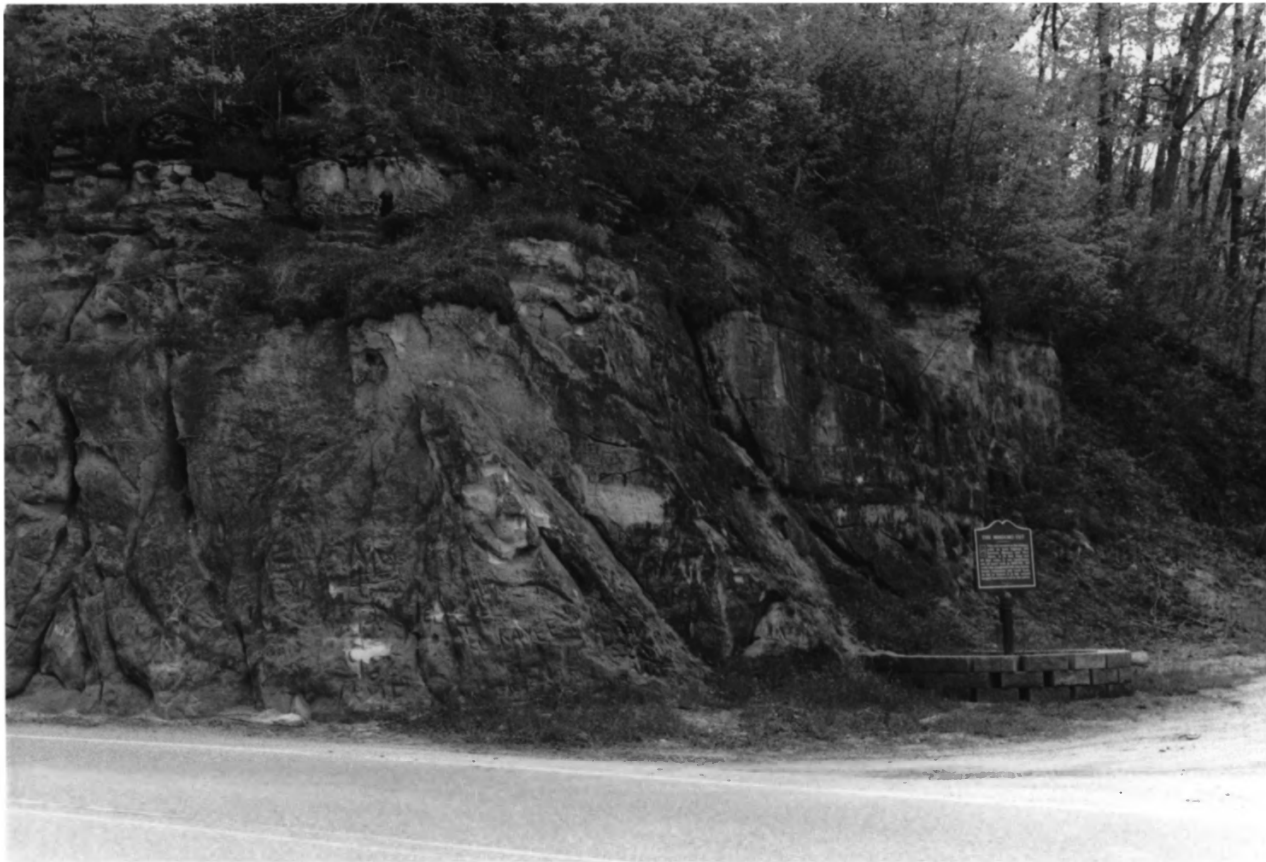
Mindoro Cot
La Crosse Co., WI
Photo # 16 of 19



Mindoro Cut

La Crosse Co., WI

Photo # 17 of 19



Mindoro Cut
La Crosse Co., WI
Photo # 18 of 19



Mindoro Cut

La Crosse Co., WI

Photo # 19 of 19