



Woodward Heights Neighborhood
Historic District

~~print~~

Lexington
Fayette *Co.*
Kentucky

DEC 1 1980

AUG 18 1980

Richard S. DeCamp
253 Market Street
March, 1980

Photo ^{1/32} Overview of W. High St. from Main St.,
looking south across Jefferson St. Viaduct, under
reconstruction.



Woodward Heights Neighborhood Historic District

Lexington
Fayette *Co.*
Kentucky

AUG 18 1980

Richard S. DeCamp
253 Market St.
March, 1980

DEC 1 1980

Photo 2/32 W. High St. looking southwest from Merino St., showing small portion of Civic Center parking lot at left, Charles G. Young House (628 High) left center.



Woodward Heights Neighborhood Historic District

Lexington
Fayette *Co.*
Kentucky

Richard S. DeCamp
253 Market St.
March, 1980

AUG 18 1980

DEC 1 1980

Photo 3/32 Junction W. High and W. Maxwell Sts. at left, looking east; beginning of Versailles Rd. in foreground; Southern Ice Co. buildings: 848-54 Maxwell in center; 408-412 Cross St. at right.



Woodward Heights Neighborhood Historic District

Lexington
Fayette Co.
Kentucky

AUG 18 1980

Bettie L. Kerr
253 Market Street
Lexington, Ky. 40508
January, 1980

DEC 1 1980

Photo 4/32 North side of West High, looking SW toward
Merino at r.; Charles G. Young House (#628) at
l.; Ben D. Bell House (#630) at r.



Woodward Heights Neighborhood Historic District

Lexington
Fayette County
Kentucky

Richard S. DeCamp
253 Market Street
Lexington, Ky. 40508

Photo 5/32 Watt-Saunier House (703 W. High St.),
looking north.

DEC 1 1980

AUG 18 1980



BN-III, 12A-13

Woodward Heights Neighborhood Historic District

Lexington
Fayette *Co*
Kentucky

Richard S. DeCamp
253 Market Street
Lexington, Ky. 40508
March, 1980

AUG 18 1980

Photo *6/32* Modern office building, southwest corner
of Merino and W. High Sts., looking SW.

DEC 1 1980



Woodward Heights Neighborhood Historic District

Lexington

Fayette *CO*

Kentucky

Richard S. DeCamp

253 Market St.

March, 1980

AUG 18 1980

Photo *7/32* 722 W. High St. (Mrs. Ella F. Williamson House) at left; garage (724 High) at right, looking west.

DEC 1 1980



Woodward Heights Neighborhood Historic District

Lexington-Fayette County
Kentucky

AUG 18 1980

Richard S. DeCamp
253 Market Street
Lexington, Ky. 40508
March, 1980

Photo 8/92 Southwest corner of Madison Place (1.) and
W. High St.; Trimmell House (303 Madison) at r.

DEC 1 1980



Woodward Heights Neighborhood Historic District

Lexington

Fayette County

Kentucky

Richard S. DeCamp

253 Market Street

Lexington, Ky. 40508

March, 1980

DEC 1 1980

Photo 9 ¹/₃₂ "Combs Lumber Co. Cottages" (731 [r.] -33-35
W. High St.), looking NW.

AUG 18 1980



BN-II, 23

Woodward Heights Heighborhood Historic District

Lexington

Fayette *CD*.

Kentucky

AUG 18 1980

Bettie L. Kerr

253 Market Street

Lexington, Ky. 40508

January, 1980

DEC 1 1980

Photo 10/32 816-20 W. High St. (Bronaugh-Cassidy
Double House), looking SW.



Woodward Heights Neighborhood Historic District

Lexington
Fayette *Co*
Kentucky

AUG 18 1980

Bettie L. Kerr
253 Market St.
Lexington, Ky. 40508
March, 1980

DEC 1 1980

Photo 11/³² South side of W. High St., looking SW;
J.S. Harp House (#844) at l.; #848 (Z.T. Smiley
House), center.



BU-III, 22A-23

Woodward Heights Neighborhood Historic District

Lexington
Fayette Co.
Kentucky

Richard S. DeCamp
253 Market Street
Lexington, Ky. 40508
March, 1980

AUG 18 1980

DEC 1 1980

Photo 12/32 South side of W. High St., looking SW;
#854 at left.



Woodward Heights Neighborhood Historic District

Lexington

Fayette County

Kentucky

Richard S. DeCamp

253 Market Street

Lexington, Ky. 40508

March, 1980

AUG 18 1980

DEC 1 1980

Photo 13^{1/2} North side of W. High St. looking NW;
#835 (stone and brick) at r.



Woodward Heights Neighborhood Historic District

Lexington
Fayette Co.
Kentucky

Richard S. DeCamp
253 Market St.
March, 1980

Photo 14/32 East side of Madison Place looking south-
east; 308 at left.

DEC 1 1980

AUG 18 1980



Woodward Heights Neighborhood Historic District

Lexington
Fayette *Co*
Kentucky

AUG 18 1980

Richard S. DeCamp
253 Market Street
Lexington, Ky. 40508
March, 1980

Photo 15/³² East side of Madison Place, looking NE;
G.W. Bain House (#316-18) at l.; H.A. White (#324);
#330; and Rev. R.T. Mathews (#336) at r.

DEC 1 1980



Woodward Heights Neighborhood Historic District

Lexington
Fayette *CO*
Kentucky

AUG 18 1980

Walter E. Langsam
253 Market Street
Lexington, Ky. 40508
April, 1980

Photo 16¹/₃₂ Stable-garage behind 316-18 Madison Place,
looking east.

DEC 1 1980



Woodward Heights Neighborhood Historic District

Lexington

Fayette *Co.*

Kentucky

Richard S. DeCamp

253 Market Street

March, 1980

Photo 17/32 West side of Madison Place looking southwest; Kesheimer house (311) at right.

AUG 18 1980

DEC 1 1980



Woodward Heights Neighborhood Historic District

Lexington

Fayette *Co*

Kentucky

Richard S. DeCamp

253 Market Street

Lexington, Ky. 40508

March, 1980

AUG 18 1980

Photo 18/~~31~~³² East side of Madison Place, looking NE;
Hal P. Headley House (#344) at r.; Geo. E. Spencer
(#340), center.

DEC 1 1980



Woodward Heights Neighborhood Historic District

Lexington
Fayette *Co*
Kentucky

Richard S. DeCamp
253 Market St.
March, 1980

DEC 1 1980

Photo 19/³² Botherum (Madison C. Johnson/J.C. Woodward House), 335 Madison Place, looking southwest after recent renovation and removal of late 19th-century residence on site of parking lot in foreground.

AUG 18 1980



Woodward Heights Neighborhood Historic District

Lexington
Fayette *Co*
Kentucky

AUG 18 1980

Richard S. DeCamp
253 Market Street
Lexington, Ky. 40508
March, 1980

DEC 1 1980

Photo 20^{1/32} West side of Madison Pl., looking NW;
B.F. Sawyer House (#355) at l.; J.V. Smith (#349)
center; Botherum grounds at r.



Woodward Heights Neighborhood Historic District

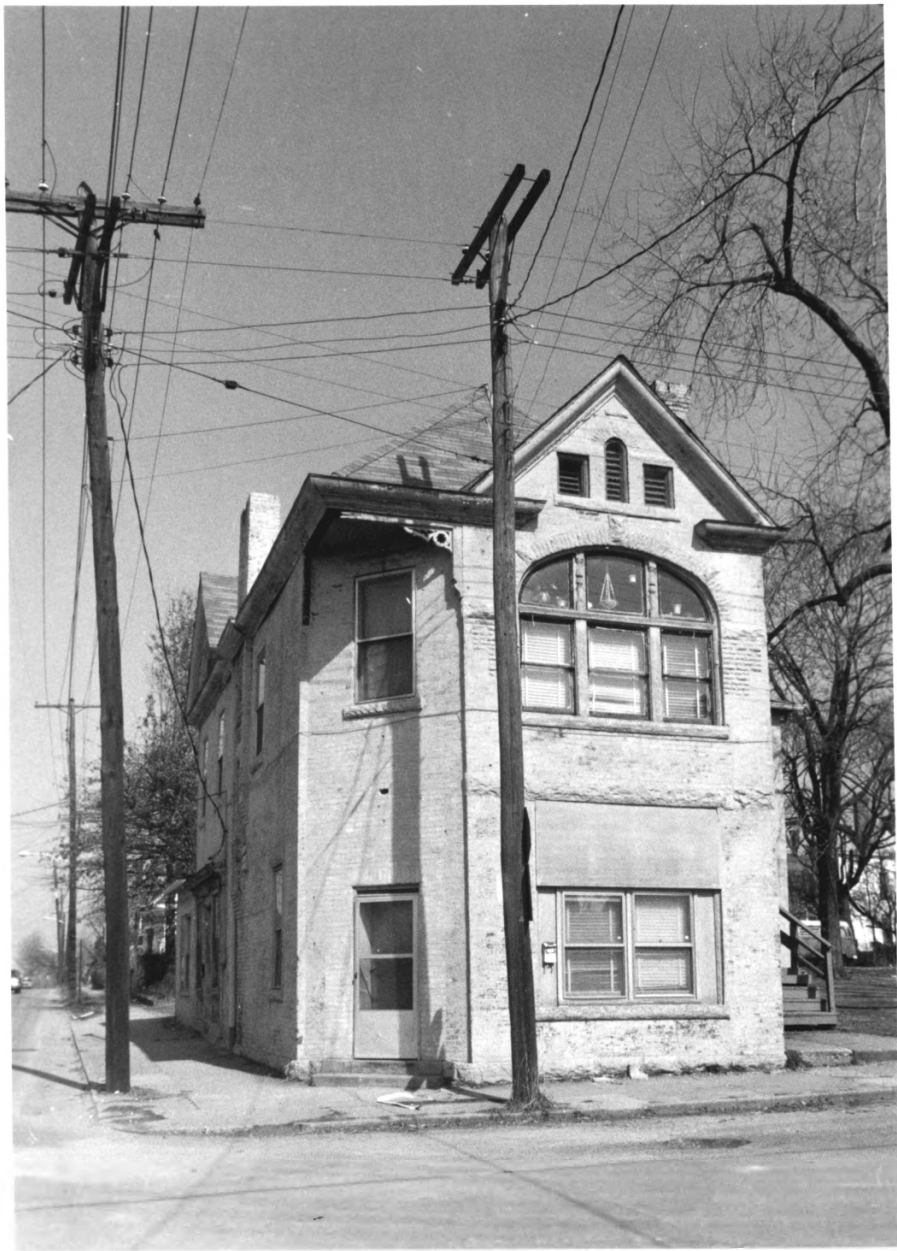
Lexington
Fayette *CA*
Kentucky

AUG 18 1980

Richard S. DeCamp
253 Market Street
Lexington, Ky. 40508
March, 1980

DEC 1 1980

Photo 21/³² NE corner of Merino St. and Madison Pl.
looking SE; A.J. Gilbert House (#352) at l.; Robert K.
Byrns (#356) at r.



Woodward Heights Neighborhood Historic District

Lexington

Fayette *CO*

Kentucky

AUG 18 1980

Richard S. DeCamp

253 Market St.

March, 1980

DEC 1 1980

Photo 22/~~32~~ 705 W. Maxwell St. (Jones Store), looking
northwest, (Merino St. in foreground).



Woodward Heights Neighborhood Historic District

Lexington
Fayette *Ca*
Kentucky

Richard S. DeCamp
253 Market St.
March, 1980

DEC 1 1980
AUG 18 1980

Photo 23/~~32~~ 802 W. Maxwell (Misses Spurr/Curtis
Family House), lookng southwest.



Woodward Heights Neighborhood Historic District

Lexington
Fayette *co.*
Kentucky

Richard S. DeCamp
253 Market St.
Lexington, Ky. 40508
March, 1980

Photo 24~~3~~³⁷ North side of W. Maxwell, looking NW;
J.C. Cock/Botherum Outbuilding (#817) at r.;
#821, left.

AUG 18 1980

DEC 1 1980



Woodward Heights Neighborhood Historic District

Lexington

Fayette *Co.* AUG 18 1980

Kentucky

Richard S. DeCamp

253 Market St.

March, 1980

Photo 25/32 South of W. Maxwell St. looking southwest;
#822 (Denton House) in foreground.

DEC 1 1980



Woodward Heights Neighborhood Historic District

Lexington
Fayette *Co*
Kentucky

AUG 18 1980

Richard S. DeCamp
253 Market St.
March, 1980

Photo 26/~~32~~ West side of Merino St. looking southwest;
321 Merino at right, with other late bungalows.

DEC 1 1980



Woodward Heights Neighborhood Historic District

Lexington
Fayette *Co.*
Kentucky

AUG 18 1980

Richard S. DeCamp
253 Market St.
March, 1980

Photo 27/~~32~~³² East side of Merino St. looking southeast;
328 Merino St. (Meehan House) at left; J.T. Jackson
House (#334) in center.

DEC 1 1980



Woodward Heights Neighborhood Historic District

Lexington
Fayette CO.
Kentucky

AUG 18 1980

W.E. Langsam
253 Market St.
Lexington, Ky. 40508
April, 1980

Photo 28/32 West side of Merino St., looking SW; #341
(Ben D. Bell House), right; #347 (George A. Bain House)
center; #351 (Hennessey-Bain House), left.

DEC 1 1980



Woodward Heights Neighborhood Historic District

Lexington
Fayette
Kentucky

Richard S. DeCamp
253 Market St.
March, 1980

AUG 18 1980

Photo 29 - West side of Merino St. looking northwest;
365 Merino (McGrath House) at left; two-story
Hennessey/Bain house (#351) in center.

DEC 1 1980



Woodward Heights Neighborhood Historic District

Lexington
Fayette *Co.*
Kentucky

AUG 18 1980

Bettie L. Kerr
253 Market Street
Lexington, Ky. 40508
March, 1980

Photo 30/³² East side of Merino St., looking SE;
#348 at l.; #352, r.

DEC 1 1980



Woodward Heights Neighborhood Historic District

Lexington
Fayette *Co*
Kentucky

AUG 18 1980

Richard S. DeCamp
253 Market St.
March, 1980

Photo 31/32 413 Merino St. (John D. Walker house),
looking southwest; Moloney's Alley at left.

DEC 1 1980



Woodward Heights Neighborhood Historic District

Lexington
Fayette *CD*
Kentucky

Richard S. DeCamp
253 Market Street
Lexington, Ky. 40508
March, 1980

AUG 18 1980

Photo 32/32 Rear of houses on south side of W. Maxwell
Place from roof of Ice Company Building; Moloney's
Alley off right.