



Nabesna Gold Mine Historic District
Fairbanks Division

AHRS SITE NO. NAB-011

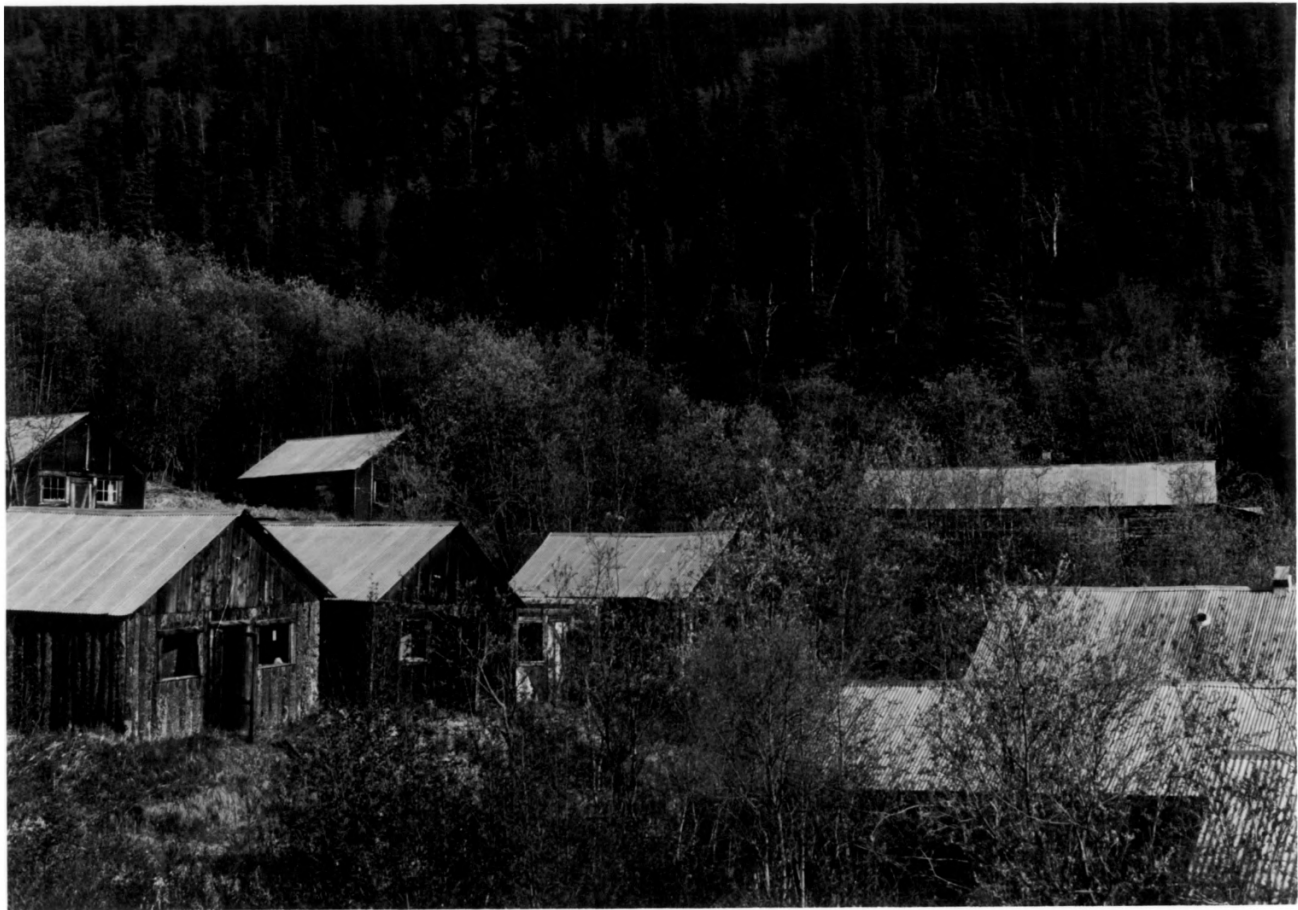
Nabesna Mine, Nabesna, Alaska

1. The Mill, looking east.

Upper portion is the tram terminal. Seperate bldg. at left is assay office. 1978.

Kirk Stanley photo; ADP negative

MAY 25 1979 APR 16 1979



Nabesna Gold Mine Historic District

Fairbanks
Division

AHRS SITE NO. NAB-011 APR 16 1979

Nabesna Mine, Nabesna, Alaska

2. Central section of Nabesna Camp west of the mill. Other principal buildings are to the left and below this group.

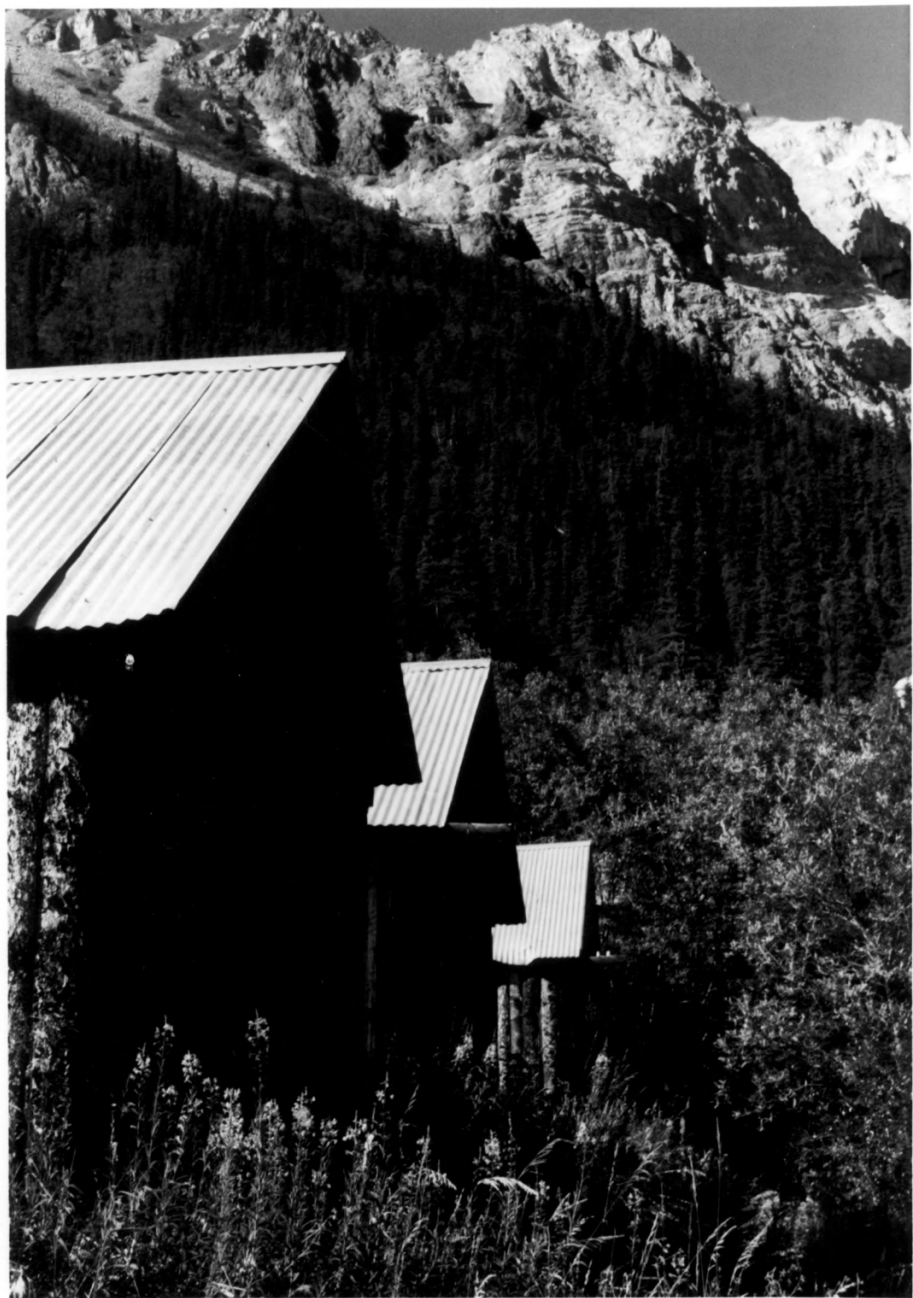
On top row here, left to right, are Mine Superintendents' House,

Mill Superintendent's House and the elongated residence of owner and developer Carl F. Whitham.

Second row: three guest cottages.

Lower right: roofs of Mine Foreman house, Warehouse and Messhall.

Photo: Kirk Stanley, 1978. ADP negatives, Anchorage. MAY 25 1979



Nabesna Gold Mine
Historic District
Fairbanks Division

AHRS SITE NO. NAB-011 (3)
Nabesna Mine, Nabesna, Alaska

Three guest cottages, looking
east toward high escarpments of
the mine portals above timberline.

Photo: Kirk Stanley, 1978.

Negative # 5DP-1979 Anchorage

APR 16 1979



Nabesna Gold Mine Historic District
Fairbanks Division

AHRS SITE NO. NAB-011 APR 16 1979

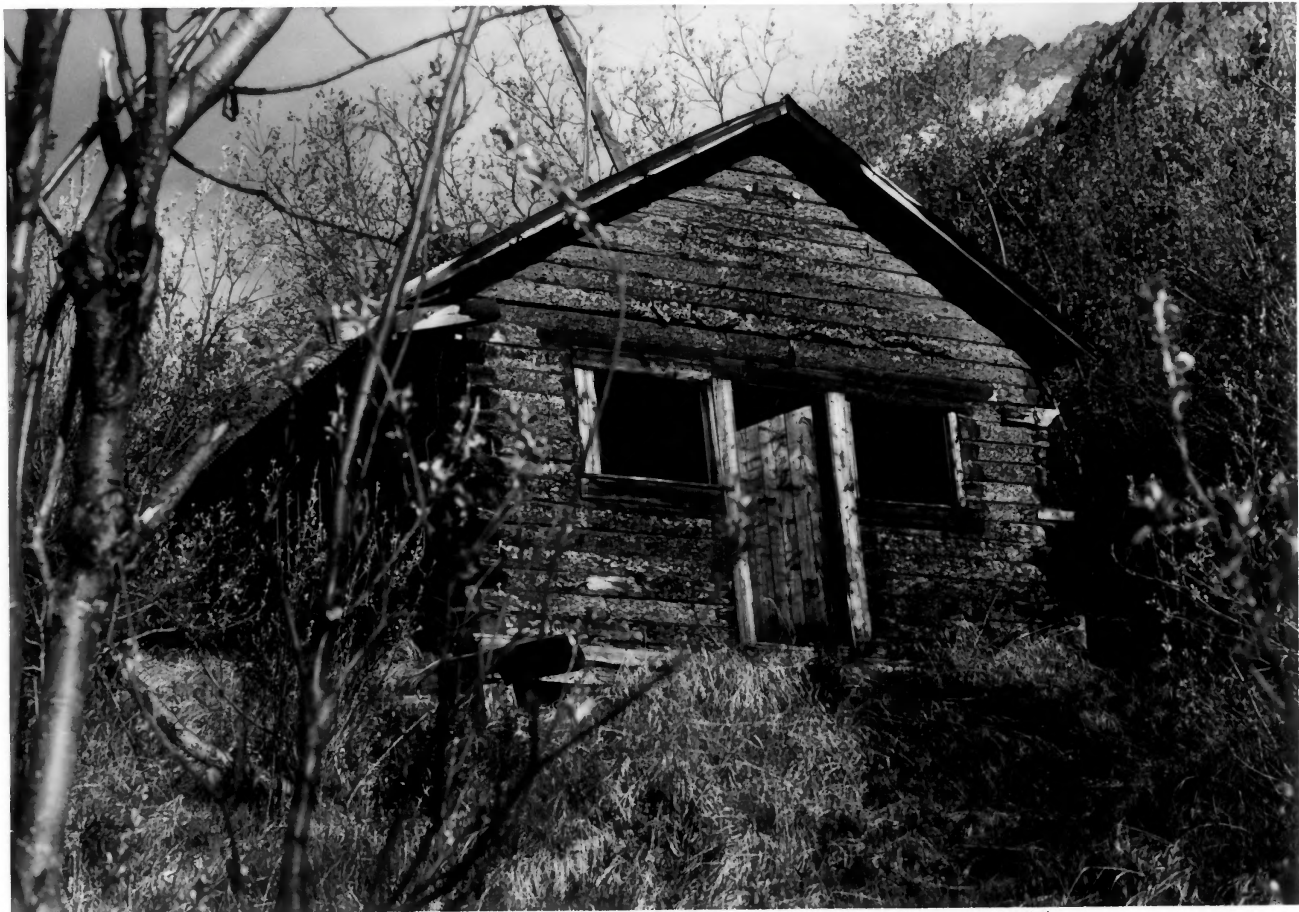
Nabesna Mine, Nabesna, Alaska

4. Warehouse-commisary (center)
and west corner of Mess Hall,
right. Looking north.

Photo: Kirk Stanley, 1978.

Negatives ADP, Anchorage.

MAY 25 1979



*Nabesna Gold Mine Historic District
Fairbanks Division*

AHRS SITE NO. NAB-011 APR 16 1979
Nabesna Mine, Nabesna, Alaska

5. Nabesna Post Office building,
similar in design to the three
Guest Cottages, downslope from
Whitham's home. The postoffice
operated from 1929 to 1947.

Photo: Kirk Stanley, 1978.
Negatives ADP (35 mm. color).

MAY 25 1979



Nabesna Gold Mine Historic District
Fairbanks Division

AHRS SITE NO. NAB-011 **APR 16 1979**
Nabesna Mine, Nabesna, Alaska

6. Mine Portals of the Bear^{25 1978}
Vein Discovery Claim, 100' level
as they appear today; at left is
remains of lower tram terminal.

Photo: Kirk M. Stanley, 1978

Negatives ADP (35 mm. color).



Nabesna Gold Mine Historic District
Fairbanks Division

AHRS SITE NO. NAB-011 APR 16 1979

Nabesna Mine, Nabesna, Alaska.

7. Carl Whitham Residence, back
door entrance; looking S.E.

Other than mine and mill had the
most commanding view of valley
below. ADP color negatives.

Kirk Stanley Photo, 1978.



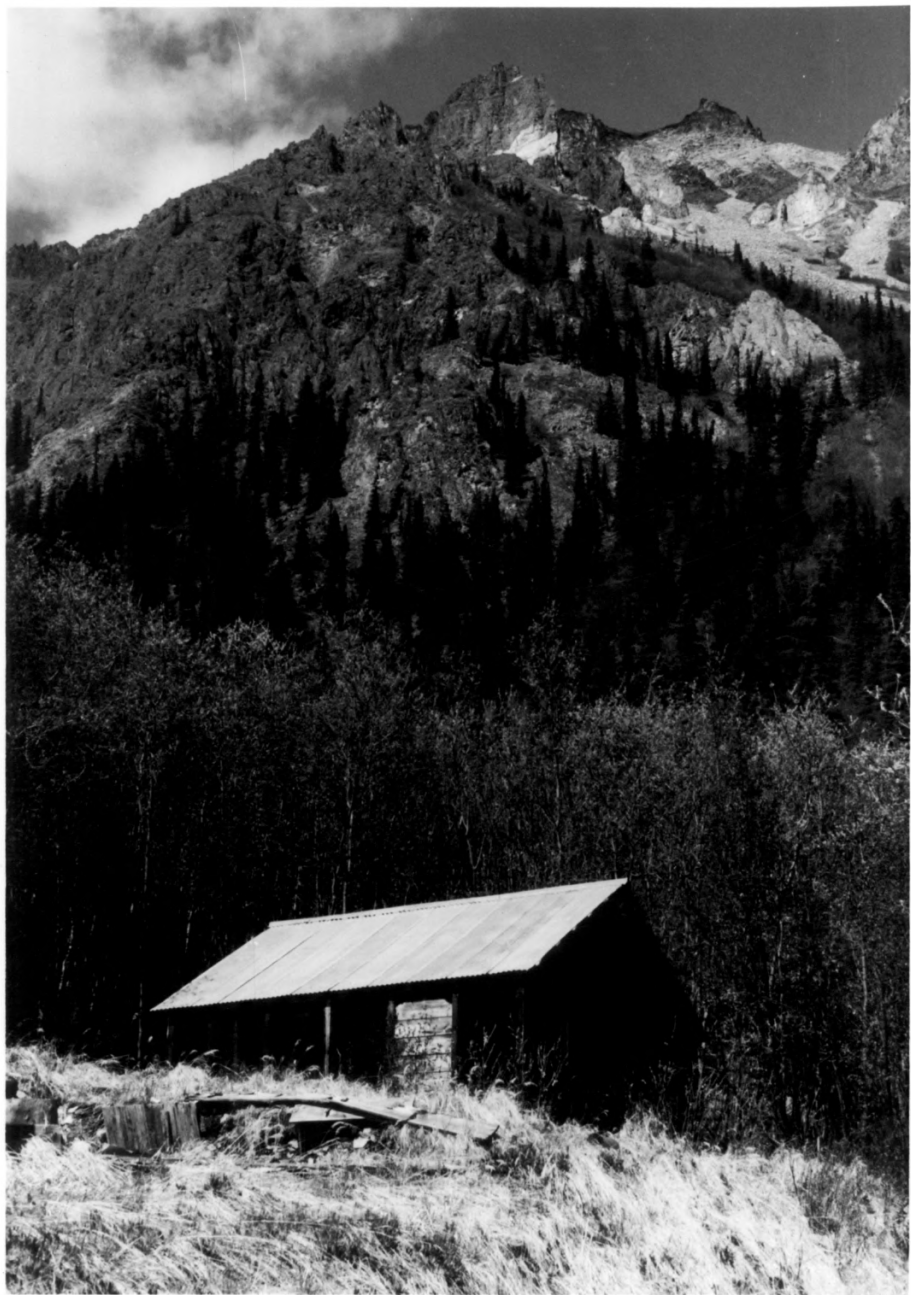
Nabesna Gold Mine Historical District
Fairbanks Division

AHRS SITE NO. NAB-0AER 16 1979
Nabesna Gold Mine, Nabesna, Ak.

8. Core Storehouse (foreground)
In distance is Mill Superintendent building.

Photo: Kirk Stanley, 1978
Negatives ADP, Anchorage.

MAY 25 1979



Nabesna Gold Mine Historic
District
Fairbanks Division

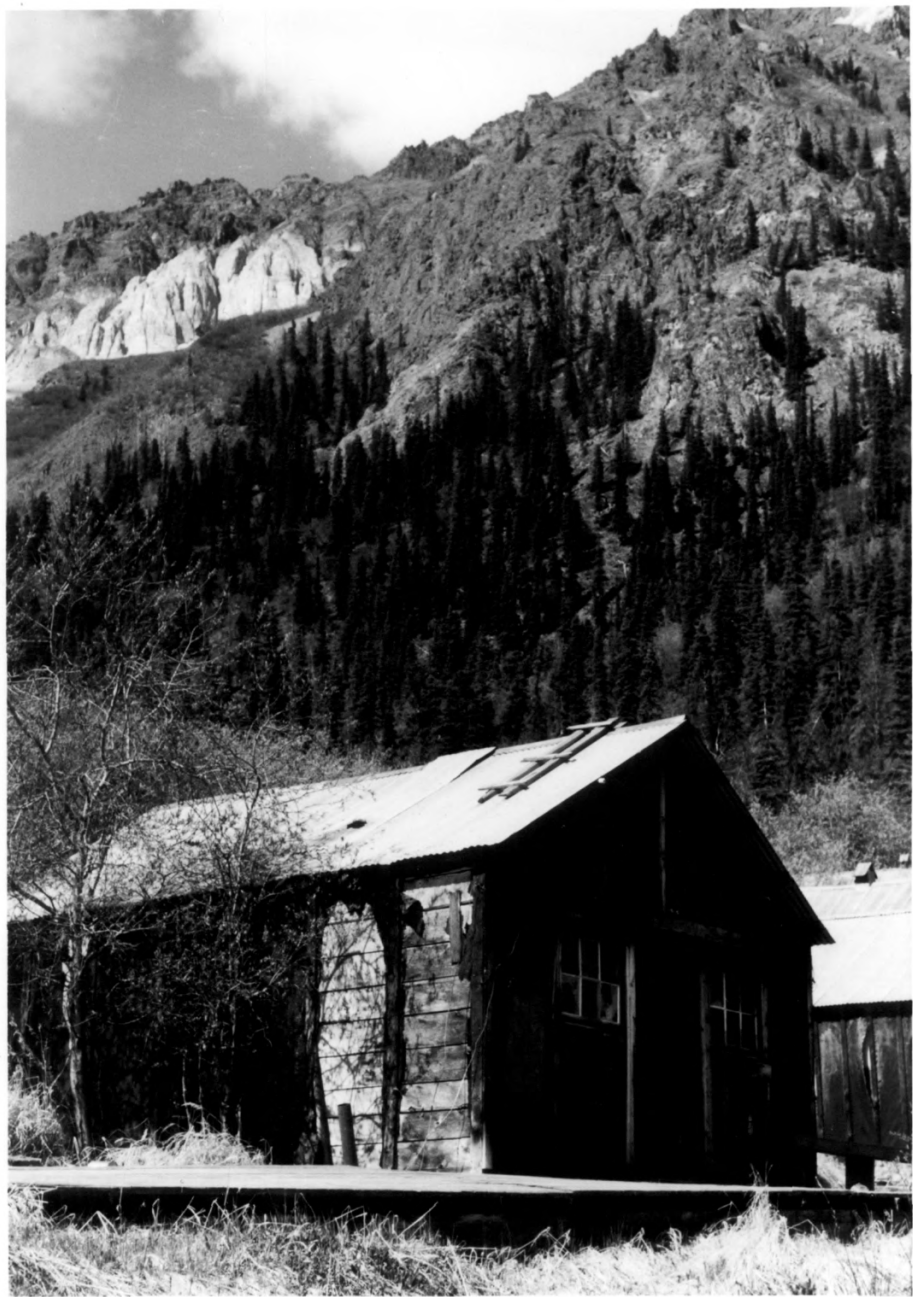
AHRS SITE NO. NAB-01 APR 16 1979
Nabesna Mine, Nabesna, Alaska

9. Mill Superintendent's Home
and office, looking N.E.,
toward mine portals.

Photo: Kirk Stanley, 1978.

Negatives ADP, 35 mm. color.

MAY 25 1979



Nabesna Gold Mine Historic
District Fairbanks
Division

AHRS SITE NO. NAB-011 APR 16 1979

Nabesna Mine, Nabesna, Alaska

10. Mine Superintendent's
Home and Office, looking north
toward mines and tramway route.
Photo: Kirk Stanley, 1978.
Negs. ADP, Anchorage.

6161 67
MAY 25 1979