

SUPPLEMENTARY LISTING RECORD

NRIS Reference Number: SG100003071

Date Listed: 11/5/18

Property Name: Brick Quarters Historic District

County: Greene

State: OH

This property is listed in the National Register of Historic Places in accordance with the attached nomination documentation subject to the following exceptions, exclusions, or amendments, notwithstanding the National Park Service certification included in the nomination documentation.



Signature of the Keeper



Date of Action

Amended Items in Nomination:

This SLR is to amend the registration form to correct the level of significance and revise the areas of significance.

Section 3. Level of Significance. The case has not been made for national level of significance, consequently, the level of significance is changed to State level.

Section 8. Areas of Significance. The case for significance has not been made under military, consequently, this area of significance is deleted from the nomination.

The Air Force FPO and the OH State Historic Preservation Office were notified of this amendment.

DISTRIBUTION:

National Register property file

Nominating Authority (without nomination attachment)

United States Department of the Interior
National Park Service



NATIONAL REGISTER OF HISTORIC PLACES
REGISTRATION FORM

This form is for use in nominating or requesting determinations for individual properties and districts. See instructions in How to Complete the National Register of Historic Places Registration Form (National Register Bulletin 16A). Complete each item by marking "x" in the appropriate box or by entering the information requested. If any item does not apply to the property being documented, enter "N/A" for "not applicable." For functions, architectural classification, materials, and areas of significance, enter only categories and subcategories from the instructions. Place additional entries and narrative items on continuation sheets (NPS Form 10-900a). Use a typewriter, word processor, or computer, to complete all items.

1. Name of Property

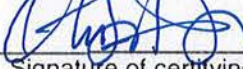
Historic name Brick Quarters Historic District
Other names/site number N/A

2. Location

Street & number Chidlaw Road and Metzger Drive not for publication
City or town Wright-Patterson Air Force Base vicinity
State Ohio code OH county Greene code 057 Zip code 45433

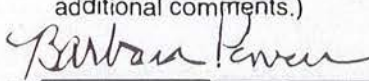
3. State/Federal Agency Certification

As the designated authority under the National Historic Preservation Act of 1966, as amended, I hereby certify that this nomination request for determination of eligibility meets the documentation standards for registering properties in the National Register of Historic Places and meets the procedural and professional requirements set forth in 36 CFR Part 60. In my opinion, the property meets does not meet the National Register Criteria. I recommend that this property be considered significant nationally statewide locally (See continuation sheet for additional comments.)

 Air Force Federal Preservation Officer 18 September 2018
Signature of certifying official Date

United States Air Force, Office of the Assistant Secretary of the Air Force, Installations, Environment and Energy
State or Federal Agency and Bureau

In my opinion, the property meets does not meet the National Register Criteria. (See continuation sheet for additional comments.)

 Dept. Head May 4, 2012
Inventory & Registration
Signature of commenting or other official Date

Ohio Historic Preservation Office, Ohio Historical Society
State of Federal Agency and Bureau

4. National Park Service Certification

I, hereby certify that this property is:

- entered in the National Register
 - See continuation sheet
- determined eligible for the National Register
 - See continuation sheet
- determined not eligible for the National Register
- removed from the National Register
- other (explain)

Signature of the Keeper

Date Of Action

For Delia

11/5/18

5. Classification

Ownership of Property

(Check as many boxes as apply.)

- private
- public-local
- public-State
- public-Federal
- object

Category of Property

(Check only one box)

- buildings
- district
- site
- structure

Number of Resources within Property

(Do not include previously listed resources in the count.)

Contributing	Noncontributing	
121	4	Buildings
0	0	Sites
0	0	Structures
1	0	Objects
122	4	Total

Name of related multiple property listing.
(Enter 'N/A' if property is not part of a multiple listing.)

N/A

Number of Contributing resources previously listed in the National Register

0

6. Function or Use

Historic Functions

(Enter categories from instructions)

DOMESTIC/Institutional Housing
DOMESTIC/Secondary Structures

Current Function

(Enter categories from instructions)

DOMESTIC/Institutional Housing
DOMESTIC/Secondary Structures

7. Description

Architectural Classification

(Enter categories from instructions)

LATE 19TH AND 20TH CENTURY
REVIVALS/Tudor Revival

Materials

(Enter categories from instructions)

Foundation Concrete
Walls Brick
Roof Clay Tile
Other Stucco and half-timber detailing

Narrative Description

(Describe the historic and current condition of the property on one or more continuation sheets.)

8. Statement of Significance

Applicable National Register Criteria

(Mark 'x' in one or more boxes for the criteria qualifying the property for National Register listing.)

- A.** Property is associated with events that have made significant contributions to the broad patterns of our history
- B.** Property is associated with the lives of Persons significant in our past.
- C.** Property embodies the distinctive characteristics of a type, period, or method of construction or represents the work of a master, or possesses high artistic values, or represents a significant and distinguishable entity whose components lack individual distinction.
- D.** Property has yielded, or is likely to yield, Information important in prehistory or history

Criteria Considerations

(Mark 'X' in all the boxes that apply.)

Property is:

- A.** owned by a religious institution or used for religious purposes.
- B.** removed from its original location.
- C.** a birthplace or grave.
- D.** a cemetery.
- E.** a reconstructed bridge, object, or structure.
- F.** a commemorative property.
- G.** less than 50 years of age or achieved a significance within the past 50 years.

Narrative Statement of Significance

(Explain the significance of the property on one or more continuation sheets.)

Areas of Significance

(Enter categories from instructions.)

COMMUNITY PLANNING
ARCHITECTURE
MILITARY

Period of Significance

1934-1937

Significant Dates

1935, 1937

Significant Person

(Complete if Criterion B is marked above.)

N/A

Cultural Affiliation

N/A

Architect/Builder

U.S. Army, Office of the Quartermaster General

Louis Lott

Albert Kahn

9. Major Bibliographical References

Bibliography

(Cite the books, articles, and other sources used in preparing this form on one or more continuation sheets.)

Previous documentation on file (NPS):

- preliminary determination of individual listing (36 CFR 67) has been requested
- previously listed in the National Register
- previously determined eligible by the National Register
- designated a National Historic Landmark
- recorded by Historic American Buildings Survey

#

- recorded by Historic American Engineering Record

OH-103

Primary location of additional data:

- State Historic Preservation Office
- Other State Agency
- Federal Agency
- Local Government
- University
- Other

Name of repository:

88 ABW/EM, Wright-Patterson AFB

10. Geographical Data

Acreage of Property 92**UTM References**

(Place additional UTM references on a continuation sheet.)

1.	+1-6+	+7-5-2-8-5-4+	+4-4-1-0-6-0-1+	3.	+1-6+	+7-5-3-6-5-5+	+4-4-1-0-7-0-8+
	Zone	Easting	Northing		Zone	Easting	Northing
2.	+1-6+	+7-5-3-2-6-3+	+4-4-1-1-0-5-0+	4.	+1-6+	+7-5-3-2-5-4+	+4-4-1-0-2-5-6+
					<input type="checkbox"/>	See continuation sheet.	

Verbal Boundary Description

(Describe the boundaries of the property on a continuation sheet.)

Boundary Justification

(Explain why the boundaries were selected on a continuation sheet.)

11. Form Prepared By

Name/title _____

Organization Hardlines Design Company Date May 3, 2004Street & Number 4608 Indianola Avenue Telephone 614-784-8733City or Town Columbus State Ohio Zip Code 43214

Additional Documentation

Submit the following items with the completed form:

Continuation Sheets**Maps**A **USGS map** (7.5 or 15 minute series) indicating the property's location.A **Sketch map** for historic districts and properties having large acreage or numerous resources.**Photographs**Representative **black and white photographs** of the property.**Additional items**

(Check with the SHPO or FPO for any additional items)

Property Owner

(Complete this item at the request of the SHPO or FPO)

Name U.S. Air ForceStreet & Number 88 ABW/EMO, 5490 Pearson Road Telephone 937-257-5528City or Town Wright-Patterson AFB State Ohio Zip Code 45433**Paperwork Reduction Act Statement:** This information is being collected for applications to the National Register of Historic Places to nominate properties for listing or determine eligibility for listing, to list properties, and to amend existing listings. Response to this request is required to obtain a benefit in accordance with the National Historic Preservation Act, as amended (16 U.S.C. 470 et seq.).**Estimated Burden Statement:** Public reporting burden for this form is estimated to average 18.1 hours per response including the time for reviewing instructions, gathering and maintaining data, and completing and reviewing the form. Direct comments regarding this burden estimate or any aspect of this form to the Chief, Administrative Services Division, National Park Service, P.O. Box 37127, Washington, DC 20013-7127; and the Office of Management and Budget, Paperwork Reductions Project (1024-0018), Washington, DC 20503.

United States Department of the Interior
National Park Service

NATIONAL REGISTER OF HISTORIC PLACES CONTINUATION SHEET

Section 7 Page 1

Brick Quarters Historic District Greene County, Ohio

Description

Located in the northeast side of Area A of Wright Patterson Air Force Base (WPAFB), Ohio, the Brick Quarters Historic District contains 122 buildings and one object constructed between 1934 and 1937. The district runs an east to west course at the south end of the complex on Chidlaw Street, and completes an arc around the east, west, and north sides of the complex following Schlatter Road, Lahm Circle, and Breene Drive. The northern boundary extends slightly north from the arc to accommodate the Officers' Club and slightly west to accommodate the Commanding Officers' Residence. The boundary exactly follows the boundaries of the original 1934-1935 housing development and Officers' Club complex.

The Brick Quarters Historic District, constructed as Army officers' housing, contains detached and semi-detached residential structures, garages, an Officers' Club, and related service facilities. Designed in the Tudor Revival style, the houses are one-and-a-half and two-and-a-half-story brick residential dwellings with stucco and half-timber detailing. Other detailing on the individual structures includes quoining, pointed-arch stone lintels, steeply pitched gables, and chimney pots.¹

Resembling a typical early twentieth-century suburban development, the brick housing structures sit astride and set back from wooded streets laid in a straight grid bounded to the northwest by a curvilinear loop with recreational facilities. The houses have large, open, common rear yards. A strong boulevard axis cuts through the center of the planned community with a green space and central axial reflecting pool, referred to as the Turtle Pond. The Turtle Pond consists of four semicircular bays arranged around a shallow rectangular concrete pool. Three cast concrete turtles are centered in each of the bays. The entire complex of houses is encircled by the fairways of a golf course. Originally opened in 1922, the golf course has been modified and altered throughout its history, including the relocation of several holes to accommodate the Brick Quarters construction.

Upon its completion in 1935, the Officers Quarters contained 91 detached and duplex quarters placed along tree-lined streets in a large horseshoe configuration. The district is composed of residential housing and a recreational complex. The Quartermaster General of the Army designed and constructed the residential units in a series of types. Labeled types "A" through "H," the structures differ little in style and character, but are sized according to the grade of officer occupying the residence. The majority of structures are small, detached cottages. Designed for company officers, these were the smallest structures at just under 1,300 square feet. Twenty-three of the structures are duplex types, containing units ranging from approximately 2,100 to 3,200 square feet. Seven Type "A" houses exist, with approximately 2,400 square feet and designated for Field Officers.²

United States Department of the Interior
National Park Service

NATIONAL REGISTER OF HISTORIC PLACES CONTINUATION SHEET

Section 7 Page 2

Brick Quarters Historic District Greene County, Ohio

Description (continued)

Every two residential units share a two-car garage located in between every other structure, with a drive from the main road. The garages have less detailing than the associated housing but are constructed with brick walls and clay tile roofs.³ At the apex of the curvilinear drive and on axis with the central boulevard sits an officers' club and mess hall. Also a brick Tudor Revival style building, the Officers' Club is a rectangular structure with a canted left wing.

Integrity

The houses of the Brick Quarters Historic District are in very good condition and are still used as officers' quarters, but alterations have been made throughout the past to upgrade the living conditions as improvements in housing have evolved. Changes to the homes have been made to all units and have consisted of such improvements as kitchens and bath upgrades and the construction of stand-alone gazebos. Family room additions have been added to the rear of single-family housing types "G" and "H."

The Commanding Officers' Residence, house type "B," has been expanded as the role of the Commander has grown. The original house had 3,826 square feet of space, but a 1942 addition to the building's north wing increased the size of the house to 5,403 square feet. Several other small additions were added in the 1970s, such as a breezeway connecting the house to the garage and a front-entrance stoop, but the house still retains its overall character and integrity.

A Field House/Gymnasium (Building 849) was built in 1947 within the district, but it lacks the integrity to be contributing to the Brick Quarters Historic District. The building is a large, plain brick facility that does not display the Tudor Revival architectural details visible on other buildings in the district. Furthermore, the building has been heavily altered: a 1975 addition provided handball and squash courts, another small addition was made in 1976, numerous improvements took place in the 1970s and 1980s, and a major renovation occurred in 1984. The various additions have diminished the integrity of the building, and the building does not have architectural continuity with the Tudor Revival-style buildings that define the district.

A few other fairly small changes have occurred within the district. Most notably, the original swimming pool behind the Officers' Club has been filled in, but an outline of its original location has been created within the new landscape.

United States Department of the Interior
National Park Service

NATIONAL REGISTER OF HISTORIC PLACES CONTINUATION SHEET

Section 7 Page 3

Brick Quarters Historic District
Greene County, Ohio

List of Contributing and Non-Contributing Buildings and Objects

Contributing Buildings

Building Number	Date of Construction	Building Type or House Plan Type
10301	1935	Type H House
10301G	1935	Garage
10303	1935	Type G House
10303G	1935	Garage
10304	1935	Type F House
10309	1935	Type G House
10309G	1935	Garage
10311	1935	Type H House
10311G	1935	Garage
10316	1935	Type E House
10319	1935	Type H House
10319G	1935	Garage
10321	1935	Type H House
10321G	1935	Garage
10323	1935	Type G House
10325	1935	Type G House
10325G	1935	Garage
10327	1935	Type H House
10329	1935	Type H House
10329G	1935	Garage
10330	1935	Type F House
10330G	1935	Garage
10332	1935	Type E House
10401	1935	Type H House
10401G	1935	Garage
10403	1935	Type H House
10403G	1935	Garage
10405	1935	Type G House
10407	1935	Type G House
10407G	1935	Garage

United States Department of the Interior
National Park Service

NATIONAL REGISTER OF HISTORIC PLACES CONTINUATION SHEET

Section 7 Page 4

Brick Quarters Historic District Greene County, Ohio

10409 1935 Type H House
List of Contributing and Non-Contributing Buildings and Objects (Continued)

Contributing Buildings

Building Number	Date of Construction	Building Type or House Plan Type
10411	1935	Type H House
10416	1935	Type F House
10418	1935	Type A House
10420	1935	Type D House
10422	1935	Type D House
10423G	1935	Garage
10424	1935	Type A House
10424G	1935	Garage
10430	1935	Type F House
10430G	1935	Garage
10432	1935	Type E House
10501	1935	Type H House
10501G	1935	Garage
10503	1935	Type H House
10503G	1935	Garage
10505	1935	Type G House
10507	1935	Type G House
10507G	1935	Garage
10509	1935	Type H House
10511	1935	Type H House
10511G	1935	Garage
10516	1935	Type F House
10518	1935	Type A House
10518G	1935	Garage
10520	1935	Type D House
10520G	1935	Garage
10522	1935	Type C House
10522G	1935	Garage
10523G	1935	Garage
10524	1935	Type A House
10524G	1935	Garage

United States Department of the Interior
National Park Service

**NATIONAL REGISTER OF HISTORIC PLACES
CONTINUATION SHEET**

Section 7 Page 5

**Brick Quarters Historic District
Greene County, Ohio**

10530 1935 Type E House

List of Contributing and Non-Contributing Buildings and Objects (Continued)

Contributing Buildings

Building Number	Date of Construction	Building Type or House Plan Type
10530G	1935	Garage
10532	1935	Type F House
10601	1935	Type H House
10601G	1935	Garage
10603	1935	Type H House
10603G	1935	Garage
10604	1935	Type E House
10609G	1935	Garage
10609	1935	Type H House
10611	1935	Type H House
10611G	1935	Garage
10616	1935	Type E House
10619	1935	Type H House
10619G	1935	Garage
10621	1935	Type H House
10621G	1935	Garage
10623	1935	Type G House
10625	1935	Type G House
10625G	1935	Garage
10627	1935	Type H House
10629	1935	Type H House
10629G	1935	Garage
10630	1935	Type E House
10630G	1935	Garage
10632	1935	Type F House
10700	1935	Type B House (Commanding Officer's Res.)
10700G	1935	Garage
10702	1935	Type C House
10703	1935	Garage
10704	1935	Type A House
10704G	1935	Garage

United States Department of the Interior
National Park Service

NATIONAL REGISTER OF HISTORIC PLACES CONTINUATION SHEET

Section 7 Page 6

Brick Quarters Historic District Greene County, Ohio

10706 1935 Type E House

List of Contributing and Non-Contributing Buildings and Objects (Continued)

Contributing Buildings

Building Number	Date of Construction	Building Type or House Plan Type
10706G	1935	Garage
10712	1935	Type F House
10712G	1935	Garage
10714G	1935	Garage
10715	1935	Type G House
10715G	1935	Garage
10716	1935	Type A House
10716G	1935	Garage
10800	1935	Officers' Club
10802	1935	Type D House
10804	1935	Type A House
10804G	1935	Garage
10809	1935	Type H house
10809G	1935	Garage
10811	1935	Type G House
10811G	1935	Garage
10812	1935	Type E House
10815	1935	Type G House
10815G	1935	Garage
10817	1935	Type G House
10817G	1935	Garage
11521	1935	Garage
11522	1935	Garage
11523	1935	Garage
11524	1935	Garage
10860	1937	Caddy House and Transformer House

Contributing Objects

07255 1937 Central Fountain ("Turtle Pond")

United States Department of the Interior
National Park Service

NATIONAL REGISTER OF HISTORIC PLACES CONTINUATION SHEET

Section 7 Page 7

**Brick Quarters Historic District
Greene County, Ohio**

List of Contributing and Non-Contributing Buildings and Objects (Continued)

Non-Contributing Buildings

10849	1947	Field House/Gymnasium
10851	1980	Misc. O/Recreation Facility
10885	1960	Swimming Pool
10888	1960	Swimming Pool Water Treatment

United States Department of the Interior
National Park Service

NATIONAL REGISTER OF HISTORIC PLACES CONTINUATION SHEET

Section 8 Page 8

Brick Quarters Historic District Greene County, Ohio

Statement of Significance

As stated in the Historic American Engineering Record documentation of Patterson Field, Brick Officers' Quarters: "The Brick Officers' Quarters, built at Patterson Field in 1934-35, were part of a nationwide initiative to create much-needed, permanent housing for military personnel."⁴ Funding for the project came from the Public Works Administration (PWA), a depression-era federal program established to provide recovery to the building industry.

The Brick Officers Quarters were designed by the Quartermaster General of the U. S. Army and erected by Penker Construction Company of Cincinnati, Ohio. They are significant as an adaptation of early civilian planning principles and popular styles of suburban architecture--in this case, Tudor Revival--applied to a military setting. The execution of such planned suburban enclaves on military installations represents an instance of the federal government on the forefront of the development of important new areas of planning and design. Nationally recognized civilian architects and planners were consulted on these early projects, thus creating the prototype for post World War II development nationwide.⁵

Historical Background and Significance:

At the close of the First World War, the Army Air Service appeared to be an effective, stable part of the defense of the United States. Soon embroiled in fiscal battles and declining military spending, the air arm of both the Army and Navy found themselves on the back burner. By 1926, a heated debate led by Colonel Billy Mitchell brought attention to the plight of the Army aviators. With a lack of planes and trained personnel, the Army was not capable of performing any functions of a modern air force. Once resolved and the funding secured for 1,800 additional airplanes, 450 officers and 15,000 enlisted men, the dynamics of lobbying activists turned to the housing situation.⁶

During the fall of 1927, the "Summerall Incident" brought the awareness of the condition of Army housing to the public eye. While on an inspection and speaking tour in several cities in October, Army Chief of Staff General Charles P. Summerall denounced housing on Army posts as disgraceful. His abrupt summoning to the White House resulted in a Congressional investigation into the condition of housing at military bases across the United States.

General Summerall's comments were not the first attempt to bring the condition of Army housing to the attention of the public. As reported by the *Philadelphia Record* in January of 1927, Secretary of War Davis had said: "Our officers and enlisted men, their wives and children, are in many posts housed in war-time shacks,

United States Department of the Interior
National Park Service

NATIONAL REGISTER OF HISTORIC PLACES CONTINUATION SHEET

Section 8 Page 9

**Brick Quarters Historic District
Greene County, Ohio**

Statement of Significance (continued)

hastily constructed for temporary use, many of them utterly unfit for human habitation." The degree of persuasive rhetoric used later by Summerall typifies the campaign to call attention to the housing condition. In San Diego, Summerall commented that about 40 percent of soldiers in the Army were housed no better than if they had been in a German prison camp.⁷

According to *Aviation* magazine, the housing condition in 1927 of the Air Service rated lower than at other Army bases. The poor condition of housing had a direct effect on the quality of officers staying with the air corps and "seriously impaired the morale of the whole force." As part of a campaign to increase public awareness, the editors reported that not only did the air corps have a problem keeping officers, but the fear existed that "the right type of enlisted men will not be attracted to stay by the air service unless they are comfortably housed." Indeed, these comments exemplify the competition for men and money faced by the air service typical of the day. The housing problem existed across all branches of the Army. The emergency construction during World War I centered around new air fields, with the majority of Air Service quarters consisting of temporary structures thrown together with an expected life of one to two years. These structures had deteriorated at a greater rate than those at older, established regular Army posts.⁸

In response to the public outcry against military living conditions, Congress appropriated nearly \$80 million between 1927 and 1933 for the military housing program. With the opportunity to mount a unified building campaign, Quartermaster General B. Frank Cheatham launched a comprehensive plan for post development. With an architectural staff led by Lt. Col. Francis B. Wheaton, who had previously worked for McKim, Mead, and White and who served as Chief of Construction from 1929 to 1933, the comprehensive plan called for a "deviation from the set type of military post" with handsome buildings replacing temporary ones built during the First World War.⁹ Funds for the new building campaign dropped as a result of the Depression of 1929, but additional funds soon became available through the public relief programs of the PWA and the Civilian Conservation Corps (CCC).

In 1933, the Quartermaster Corps received \$61 million from the Federal Emergency Administrator of Public Works. These funds provided for 660 projects at 65 bases and resulted in the construction of 1,636 buildings or structures nationwide. Under this funding, the Corps prepared plans and specifications for 647 detached officers quarters and 66 semi-detached quarters.¹⁰

United States Department of the Interior
National Park Service

NATIONAL REGISTER OF HISTORIC PLACES CONTINUATION SHEET

Section 8 Page 10

**Brick Quarters Historic District
Greene County, Ohio**

Statement of Significance (continued)

Of the PWA funds given to the Quartermaster General's Office, the Corps allocated \$8,300,000 for improving Army Air Corps facilities. This amount included \$2,735,111 for construction projects at Wright and Patterson Fields. The construction of officers quarters filled the bulk of the allocation to Wright and Patterson Fields, but plans also called for hangars, a Technical Data Building, a Static Test Building, and improvements to the landing field.

The construction of the Brick Quarters at Patterson Field began in 1934, but planning had begun as early as 1930. The design of the new housing emanated from new movements in private sector housing. The Army Quartermaster General utilized new ideas in city planning and suburban development to establish housing that identified itself with new scientific or model developments and not the traditional grid-like Army post. These new scientific housing developments embodied aesthetic ideals of efficient modern living and the uplift of quality of life. Through the design of playgrounds, patios, barbecue pits, a swimming pool, a golf course, and an open mess the Army sought to create the conceptual idea of community for the new family-oriented career officer.¹¹

Planning for the officers quarters at Patterson Field began well in advance of appropriation of construction funds. As early as May 1930, the Constructing Quartermaster's office sent the Quartermaster General in Washington proposed sites suitable for the housing development. Undergoing several changes, the final plan developed called for 91 structures, both single detached and semi-detached, based on the size and configuration of standard Army housing size and cost determined according to rank.¹² Designers laid out the housing in a horseshoe-shaped configuration with a central green space and reflecting pool flanked by avenues.

The design of the houses followed the typical early twentieth-century revival style of Tudor Revival. The style had medieval origins and was not as popular among contemporary architects as Colonial Revival, Mission, or Craftsman styles, but had been at the turn of the century a common style of large grand manor houses of the nation's new wealthy.¹³

Even though not a typical style used in military housing, the Army developed the prototype of the Tudor Revival-style officers quarters at Langley Field, Virginia, the only other base in the United States to use this style. At Langley, the Army erected Tudor Revival housing during two separate building campaigns, one in 1918 and again in 1932. The first wave of revival styled houses were designed by renowned architect, Albert Kahn. Generally noted for his involvement in industrial design for the military, Kahn stood out among the prominent architects designing in the Tudor Revival style during the early twentieth-century.¹⁴

United States Department of the Interior
National Park Service

NATIONAL REGISTER OF HISTORIC PLACES CONTINUATION SHEET

Section 8 Page 11

**Brick Quarters Historic District
Greene County, Ohio**

Statement of Significance (continued)

The legacy of Kahn's work passed to the second phase of building at Langley and then on to Patterson Field. In February 1932, the Quartermaster General's office in Washington sent a memo to the Chief of the Air Corps, stating: "It is understood that your office favors the erection at the Fairfield Depot of Officer's quarters of the type constructed at Langley Field. A set for each blue prints of the types built at Langley field has been forwarded to your office by special messenger for your study in connection with the recommendation of the Construction Quartermaster in basic letter."¹⁵

In October 1933, these plans and specifications for the Officer's Quarters at Patterson Field were voluntarily reviewed by one of Dayton's leading architects, Louis Lott. After reviewing the existing plans, Lott made a series of critical assessments. Lott found the plans generally favorable, but commented that the plans exhibited "medium good design in vogue ten to fifteen years ago and cannot be said to be abreast of the times." His recommendations included a "smaller, more compact kitchen" and a larger living room with a dining alcove. Lott further suggested that the number and size of rooms exceeded the needs of most officers, and that the construction detailing was "unduly massive" and more than required to carry the load. Impressed with Lott's recommendations, the construction quartermaster, Roland C. Bower, requested permission to employ Lott as "Senior Architect" to revise the plans with the intention of reducing construction costs.¹⁶

Lott's influence cannot be overstated. He had considerable experience with Revival styles, including the receipt of a local American Institute of Architects award for the design of the C.C. Blackmore Home, one of the region's best examples of half-timbered Tudor Revival architecture. This house, in fact, has the same timber entry portico found on types "C" and "D" officer's quarters. Indeed, Lott's suggestion that small single quarters should be erected for younger or lower-ranking officers resulted in the new design of types "G" and "H" that constitute the largest group of houses built in the development.¹⁷

The Army awarded the contract for constructing the dwellings in March 1934. The Penker Construction Company of Cincinnati submitted the low bid and proceeded to complete the million dollar PWA contract. Work commenced on March 19 in a "mass production" system whereby each phase of the construction of all structures was completed concurrently. According to the contract, crews erected each house with a concrete foundation, brick walls with wooden framing and millwork, and clay tile roofs. Construction went according to schedule with only minor change orders, such as the addition of a coat closet and coal room. By late June 1935, officers and their families began to move into the new homes. On July 1, the Army accepted the project as complete.¹⁸

United States Department of the Interior
National Park Service

NATIONAL REGISTER OF HISTORIC PLACES CONTINUATION SHEET

Section 8 Page 12

**Brick Quarters Historic District
Greene County, Ohio**

Statement of Significance (continued)

The Army awarded an additional contract for the completion of the Officer's Mess, located at the top of the horseshoe plan. Commencing in February 1934, the J.H. Marchbank Company of Chicago constructed the building with a steel and wood structural system clad with a brick exterior and a shingle tile roof. The base intended the new Officers' Club to provide facilities for social entertaining as well as dining. With the only delay an extreme cold spell in March, the contractor completed the building in October 1934.¹⁹

Additionally, landscape and other features were provided to the Officer's Quarters. One of the most notable features was the central ornamental pool, referred to as the Turtle Pond. Undertaken through the use of Civilian Conservation Corps funds, the base constructed the pool as a recreational facility for use as a wading pool in the summer and an ice skating rink in the winter. The shallow rectangular concrete pool has large semicircular bays on each end and smaller semicircular bays on each side. Centered within each of the four bays is a round, slightly domed, cast concrete pad bearing three large concrete turtles. Atop each set of turtles is a large concrete sphere with an embedded water pipe that makes the entire structure a fountain. Completed in under a year, quartermaster laborers began excavation in January 1937 and finished the reinforced concrete shell in November 1937.²⁰ Also completed in 1937 was the swimming pool at the Officers' Mess. Funding for the project was donated by Mrs. Julia Shaw Carnell in memory of her son, Lt. Frank Stuart Patterson. The pool included a terrazzo dance terrace, and a pool terrace.²¹ The pool has been subsequently filled in although each terrace remains.

The Brick Quarters have undergone relatively few changes. The alterations have included interior modifications and upgrades to virtually all baths and kitchens. By 1947, an 18-hole golf course encircled the housing complex, effectively preserving the isolation of the community. During the 1990s, the G and H units had a one-room addition placed on the rear elevation and stand-alone gazebos added in the back of the facilities. The quarters have continued to function as designed, providing housing for officers and their families. The Officers' Club has been substantially expanded and provides an active focus for the community. It now serves as a joint Officer-Enlisted club/facility. Currently, the quarters appear as a quiet neighborhood amidst the active office and laboratory complexes of Wright-Patterson Air Force Base.

Notes

¹ Lavoie, Catherine C., and Herrin, Dean A. "Patterson Airfield, Brick Officers' Quarters, Wright-Patterson Air Force Base." HAER Report OH, 1994. Referred to from this point as HAER.

² HAER, p. 22.

United States Department of the Interior
National Park Service

NATIONAL REGISTER OF HISTORIC PLACES CONTINUATION SHEET

Section 8 Page 13

Brick Quarters Historic District Greene County, Ohio

Notes (continued)

- ³ HAER, p. 29-30.
- ⁴ Hardlines: Design & Delineation. "Patterson Airfield, Brick Officers' Quarters, Wright-Patterson Air Force Base." HAER Drawing OH-103, Sheet 1 of 1, 1994.
- ⁵ HAER, p. 1.
- ⁶ "A Big Military Aviation Program." *Literary Digest*, June 19, 1926, p. 9.
- ⁷ "Army Housing A 'National Disgrace'." *Literary Digest*, November 5, 1927.
- ⁸ Savage, W.E. "Why and How an Airplane is Static Tested," *Aviation* November 14, 1927 pp. 1164-1166.
- ⁹ HAER, p. 12.
- ¹⁰ HAER, p. 21-22.
- ¹¹ HAER, p. 20.
- ¹² HAER, p. 22.
- ¹³ HAER, p. 22.
- ¹⁴ HAER, p. 23.
- ¹⁵ HAER, p. 23.
- ¹⁶ HAER, p. 25.
- ¹⁷ HAER, p. 26.
- ¹⁸ HAER, p. 28.
- ¹⁹ HAER, p. 30.

United States Department of the Interior
National Park Service

**NATIONAL REGISTER OF HISTORIC PLACES
CONTINUATION SHEET**

Section 8 Page 14

**Brick Quarters Historic District
Greene County, Ohio**

Notes (continued)

²⁰ HAER , p. 31.

²¹ HAER , p. 32.

United States Department of the Interior
National Park Service

NATIONAL REGISTER OF HISTORIC PLACES CONTINUATION SHEET

Section 9 Page 15

Brick Quarters Historic District
Greene County, Ohio

Bibliography

Primary Sources

Articles

"A Big Military Aviation Program." *Literary Digest*, June 19, 1926, 87: 9.

"A Day at Dayton: With Air Corps Pioneers." *World's Work*, January 1932, 61: 61-4.

"Air Corps Laboratories Open Oct. 12." *Aviation*, October 3, 1927, pp. 839-40.

"Aircraft Radio Labs." *Radio News*, Feb. 1942, 27: 8-9.

"Army Housing A 'National Disgrace'." *Literary Digest*, November 5, 1927.

"First Results of the Coolidge Aircraft Probe." *Literary Digest*, October 10, 1925, 87: 10-11.

"Materiel Division Activities." *Aviation Engineering*, April 1932, 6: 28-30.

"McCook Field Review." *Aviation*, January 11, 1926, 20: 47-9.

"Military Movies: Now Being Made with the Finest Equipment." *Scientific American*, December 1942, 167:
278.

"Production Work at Fairfield," *Aviation*, May 31, 1926

"The Coming Aviation Fight In Congress." *Literary Digest*, December 12, 1925, 87: 10-11.

"U.S. Air Center Speeds Research." *Science News Letter*, July 8, 1939, 36: 26-8.

"Work of the Materiel Division." *Society of Automotive Engineers Journal*, September 1929, 25: 233-39.

"Wright Field: The Heart of the Army Air Corps." *Aviation*, April 1940, 39: 34-7.

United States Department of the Interior
National Park Service

NATIONAL REGISTER OF HISTORIC PLACES CONTINUATION SHEET

Section 9 Page 16

**Brick Quarters Historic District
Greene County, Ohio**

Bibliography (continued)

"400-Mile-An-Hour Wind Tunnel." *Popular Science*, May 1942, 140: 62-5.

Fales, E.N. "The Wind Tunnel and Its Contribution to Aviation," *Aviation* October 31, 1927, 23:1054-7.

Ford, George B. "New Army Posts for Old," *The Quartermaster Review* November-December 1929, p.19.

Insley. "Air-Cooled Engines: Historic Survey Engineering Division, Air Corps, Dayton, Ohio." *Scientific American*, August 1925, 137:127.

Nurse, Lt. Howard B. "The Planning of Army Posts," *The Quartermaster Review* September-October 1928, p. 15.

Savage, W.E. "Why and How an Airplane is Static Tested," *Aviation* November 14, 1927 pp.1164-1166.

Other

Office of the Quartermaster. "Map of Concrete Roads- August 21, 1929." 88 Air Base Wing, Civil Engineering, Wright-Patterson Air Force Base, Ohio.

Wright-Patterson Air Force Base. Various original construction drawings for Wright Field. 88 Air Base Wing, Civil Engineering, Wright-Patterson Air Force Base, Ohio.

Wright-Patterson Air Force Base. Various historic base maps: located in flat file. 88 Air Base Wing, Civil Engineering, Wright-Patterson Air Force Base, Ohio.

Secondary Sources

Books

Cornelisse, Diana Good. *The Foullois House: Its Place in the History of the American Miami Valley and American Aviation*. History Office: Aeronautical Systems Division, Wright-Patterson Air Force Base, No Date.

Curtis, William J.R. *Modern Architecture Since 1900*. Oxford: Phaidon Press Limited, 1982.

United States Department of the Interior
National Park Service

NATIONAL REGISTER OF HISTORIC PLACES CONTINUATION SHEET

Section 9 Page 17

Brick Quarters Historic District
Greene County, Ohio

Bibliography (continued)

- Fine, Lenore, and Remington, Jesse A. "The Corps of Engineers: Construction In the United States." Office of the Chief of Military History. Washington, D.C., 1972.
- Glines, Lt. Col. Carroll V. *The Compact History of the United States Air Force*. New York: Hawthorn Books, 1963.
- Goldberger, Paul. *A Monograph of the Works of McKim Mead & White 1879-1915*. New York: Da Capo Press, Inc., 1985.
- History Office. *An Historic Tour of Wright-Patterson Air Force Base*. 88 Air Base Wing, Air Force Materiel Command, Wright-Patterson Air Force Base, 1995.
- Kostof, Spiro. *A History of Architecture: Settings and Rituals*. New York: Oxford University Press, Inc., 1985.
- Neihaus, James J. *Genesis: Materials Central-A Historical Account of Materials Effort From McCook To Wright Field 1917-1962*. Aeronautical System Division - Air Force System Command - USAF, 1962.
- Office of History. *History Of Hill Air Force Base*. Ogden Air Logistics Center, Hill Air Force Base, Utah, 1988.
- Roth, Leland M. *McKim, Mead & White, Architects*. New York: Harper & Row, 1983.
- Termena, Bernard J.; Peiffer, Layne B.; and Carlin, H.P. *Logistics: An Illustrated History of AFLC and Its Antecedents, 1921-1981*. Office of History: Headquarters, Air Force Logistics Command, Wright-Patterson Air Force Base, Ohio, No Date.
- Thomas, Lowell, and Jablonski, Edward. *Doolittle: A Bibliography*. Garden City, New York: 1976.
- Walker, Lois E., and Wickman, Shelby E. *From Huffman Prairie To The Moon: The History Of Wright-Patterson Air Force Base*. 1986. Office of History: 2750th Air Base Wing, Wright-Patterson Air Force Base.

United States Department of the Interior
National Park Service

**NATIONAL REGISTER OF HISTORIC PLACES
CONTINUATION SHEET**

Section 9 Page 18

**Brick Quarters Historic District
Greene County, Ohio**

Bibliography (continued)

Other

“The Engineering of Flight: Aeronautical Engineering Facilities of Area B, Wright-Patterson Air Force Base, Ohio.” Edited by Emma J.H. Dyson, Dean A. Herrin, and Amy E. Slaton: with contributions by Mary Caballero et al. HAER Report OH, 1993. (HAER Collections, Library of Congress).

Hardlines: Design & Delineation. “History of the Wright-Patterson Air Force Base Railroad Network.” HAER Report OH, 1995. 88 Air Base Wing Environmental Management Office, Wright-Patterson Air Force Base.

Lavoie, Catherine C., and Herrin, Dean A. “Patterson Airfield, Brick Officers’ Quarters, Wright-Patterson Air Force Base.” HAER Report OH-103, 1994.

U.S. Department of the Interior: National Park Service. “National Register Bulletin 16: Guidelines For Completing National Register Of Historic Places Form.” Interagency Resources Division, National Register Branch, 1991.

United States Department of the Interior
National Park Service

NATIONAL REGISTER OF HISTORIC PLACES CONTINUATION SHEET

Section 10 Page 19

Brick Quarters Historic District
Greene County, Ohio

Verbal Boundary Description

The district runs an east to west course at the south end of the complex on Chidlaw Street, and completes an arc around the east, west, and north sides of the complex following Schlatter Road, Lahm Circle, and Breene Drive. The northern boundary extends slightly north from the arc to accommodate the Officers' Club and slightly west to accommodate the Commanding Officers' Residence.

Resembling a typical early twentieth-century suburban development, the brick housing structures sit astride and set back from wooded streets laid in a straight grid bounded to the northwest by a curvilinear loop with recreational facilities. A strong boulevard axis cuts through the center of the planned community with a green space and central axial reflecting pool. The houses have large, open, common rear yards. The entire complex of houses is encircled by the fairways of a golf course. See accompanying map.

Boundary Justification

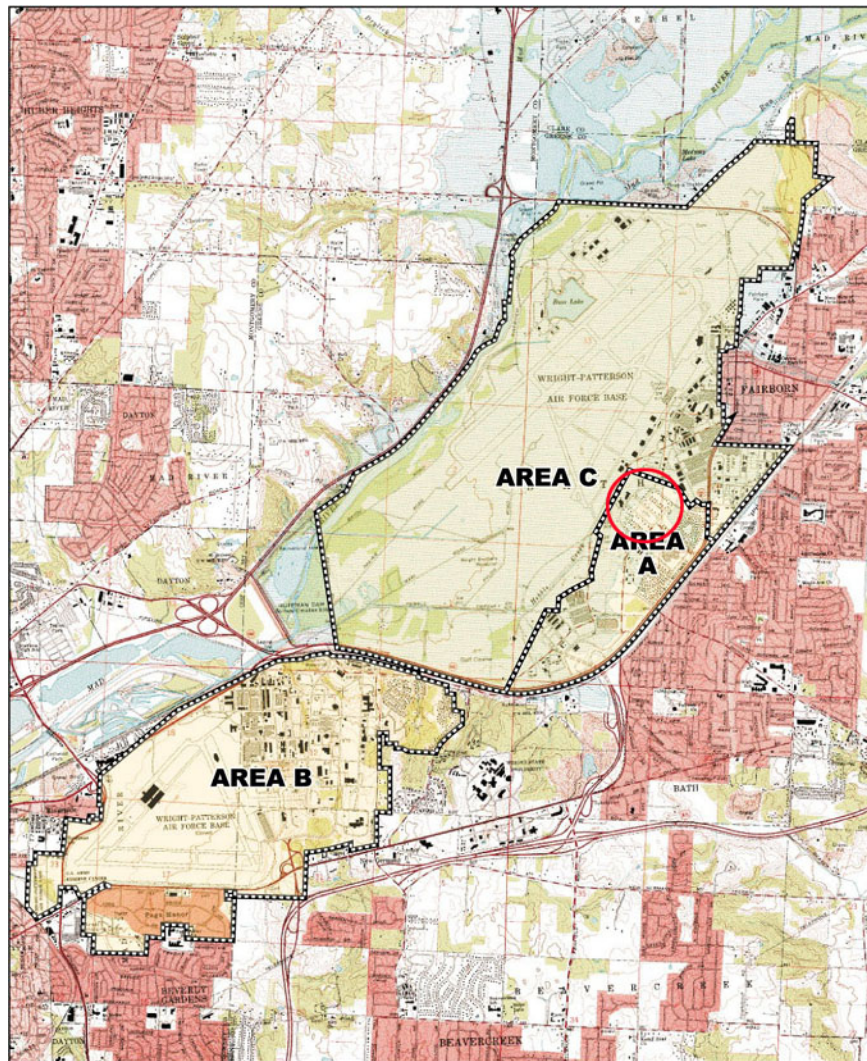
The boundary for the Brick Quarters Historic District follows the boundaries of the original 1934-35 housing development and Officers' Club complex. All significant resources associated with the Brick Quarters are located within this boundary.

United States Department of the Interior
National Park Service

NATIONAL REGISTER OF HISTORIC PLACES CONTINUATION SHEET

Section Map Page 20

Brick Quarters Historic District
Greene County, Ohio



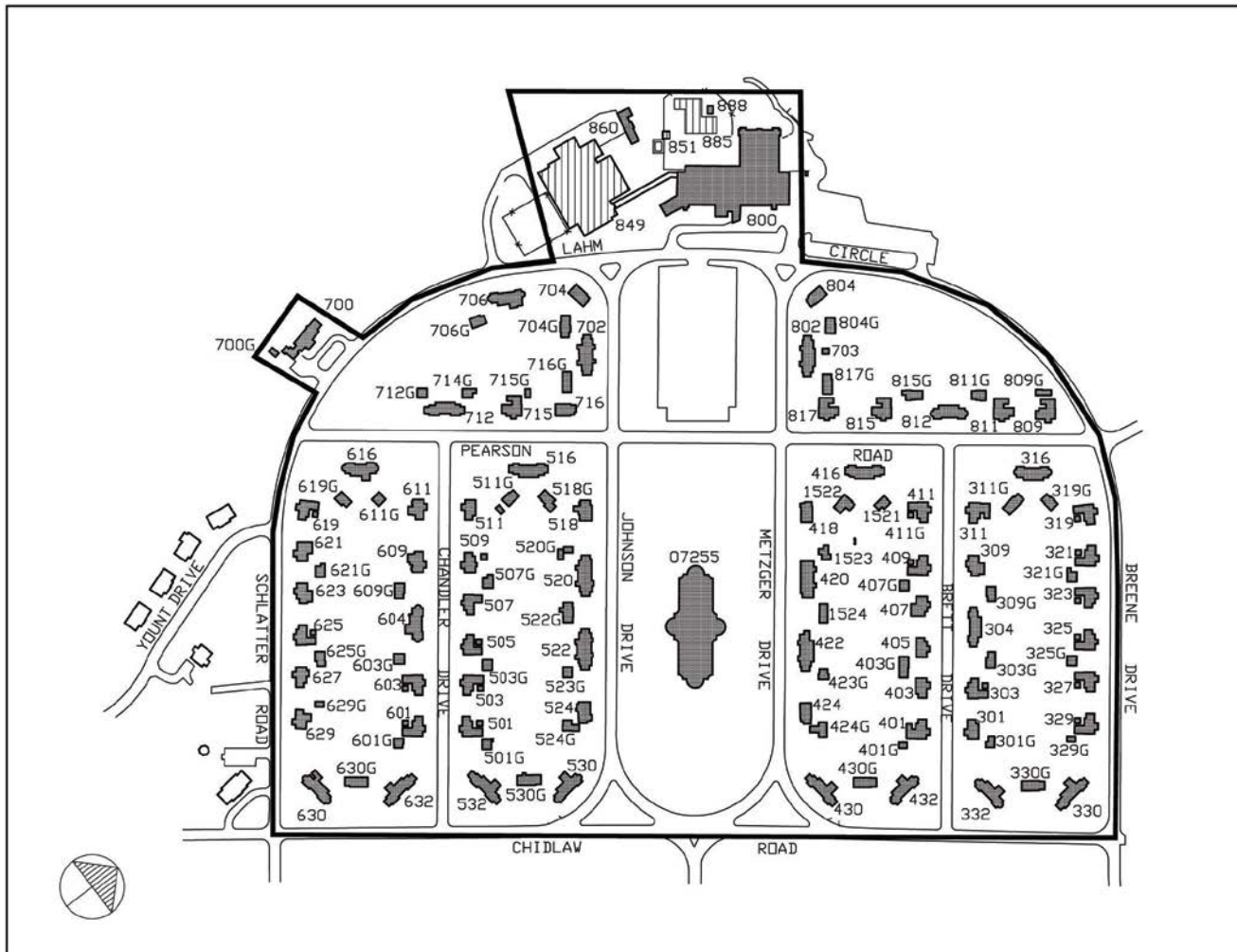
USGS Map of Brick Quarters Historic District

United States Department of the Interior
National Park Service

NATIONAL REGISTER OF HISTORIC PLACES CONTINUATION SHEET

Section Map Page 21

Brick Quarters Historic District
Greene County, Ohio



Map of Brick Quarters Historic District

United States Department of the Interior
National Park Service

NATIONAL REGISTER OF HISTORIC PLACES CONTINUATION SHEET

Section _____ Map _____ Page 22

Brick Quarters Historic District
Greene County, Ohio

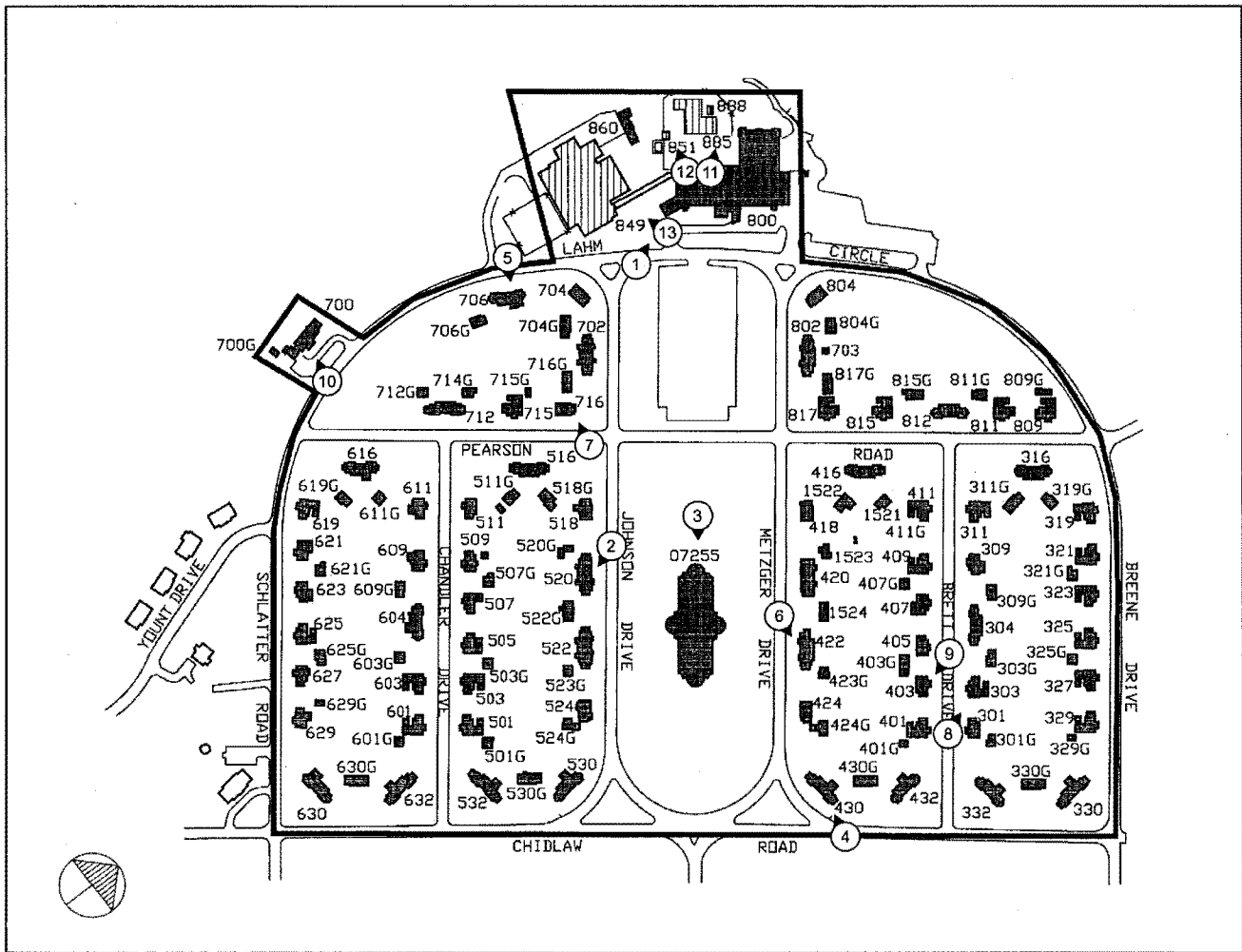


Photo Key for Brick Quarters Historic District

United States Department of the Interior
National Park Service

NATIONAL REGISTER OF HISTORIC PLACES CONTINUATION SHEET

Section Photos Page 23

Brick Quarters Historic District
Greene County, Ohio



Photograph 1. Officers' Club looking north

United States Department of the Interior
National Park Service

NATIONAL REGISTER OF HISTORIC PLACES CONTINUATION SHEET

Section Photos Page 24

Brick Quarters Historic District
Greene County, Ohio



Photograph 2. Corner of Pearson and Johnson Streets, looking southeast

United States Department of the Interior
National Park Service

NATIONAL REGISTER OF HISTORIC PLACES CONTINUATION SHEET

Section Photos Page 25

Brick Quarters Historic District
Greene County, Ohio



Photograph 3. Central Pond looking southeast

United States Department of the Interior
National Park Service

NATIONAL REGISTER OF HISTORIC PLACES CONTINUATION SHEET

Section Photos Page 26

Brick Quarters Historic District
Greene County, Ohio



Photograph 4. Building 430 looking northwest, Type F.

United States Department of the Interior
National Park Service

NATIONAL REGISTER OF HISTORIC PLACES CONTINUATION SHEET

Section Photos Page 27

Brick Quarters Historic District
Greene County, Ohio



Photograph 5. Building 706 looking east, Type E

United States Department of the Interior
National Park Service

NATIONAL REGISTER OF HISTORIC PLACES CONTINUATION SHEET

Section Photos Page 28

Brick Quarters Historic District
Greene County, Ohio



Photograph 6. Building 422 looking northeast, Type D

United States Department of the Interior
National Park Service

NATIONAL REGISTER OF HISTORIC PLACES CONTINUATION SHEET

Section Photos Page 29

Brick Quarters Historic District
Greene County, Ohio



Photograph 7. Building 716 looking west, Type A

United States Department of the Interior
National Park Service

**NATIONAL REGISTER OF HISTORIC PLACES
CONTINUATION SHEET**

Section Photos Page 30

Brick Quarters Historic District
Greene County, Ohio



Photograph 8. Building 303 looking north, Type G

United States Department of the Interior
National Park Service

NATIONAL REGISTER OF HISTORIC PLACES CONTINUATION SHEET

Section Photos Page 31

Brick Quarters Historic District
Greene County, Ohio



Photograph 9. Building 401 looking southeast, Type H

United States Department of the Interior
National Park Service

NATIONAL REGISTER OF HISTORIC PLACES CONTINUATION SHEET

Section Photos Page 32

Brick Quarters Historic District
Greene County, Ohio



Photograph 10. Building 700, looking west, Commanding Officer's Quarters

United States Department of the Interior
National Park Service

NATIONAL REGISTER OF HISTORIC PLACES CONTINUATION SHEET

Section Photos Page 33

Brick Quarters Historic District
Greene County, Ohio



Photograph 11. Building 885 looking north, Swimming Pool (non-contributing)

United States Department of the Interior
National Park Service

NATIONAL REGISTER OF HISTORIC PLACES CONTINUATION SHEET

Section Photos Page 34

Brick Quarters Historic District
Greene County, Ohio



Photograph 12. Building 851 (non-contributing) and Brick Wall, looking west

United States Department of the Interior
National Park Service

NATIONAL REGISTER OF HISTORIC PLACES CONTINUATION SHEET

Section Photos Page 35

Brick Quarters Historic District
Greene County, Ohio



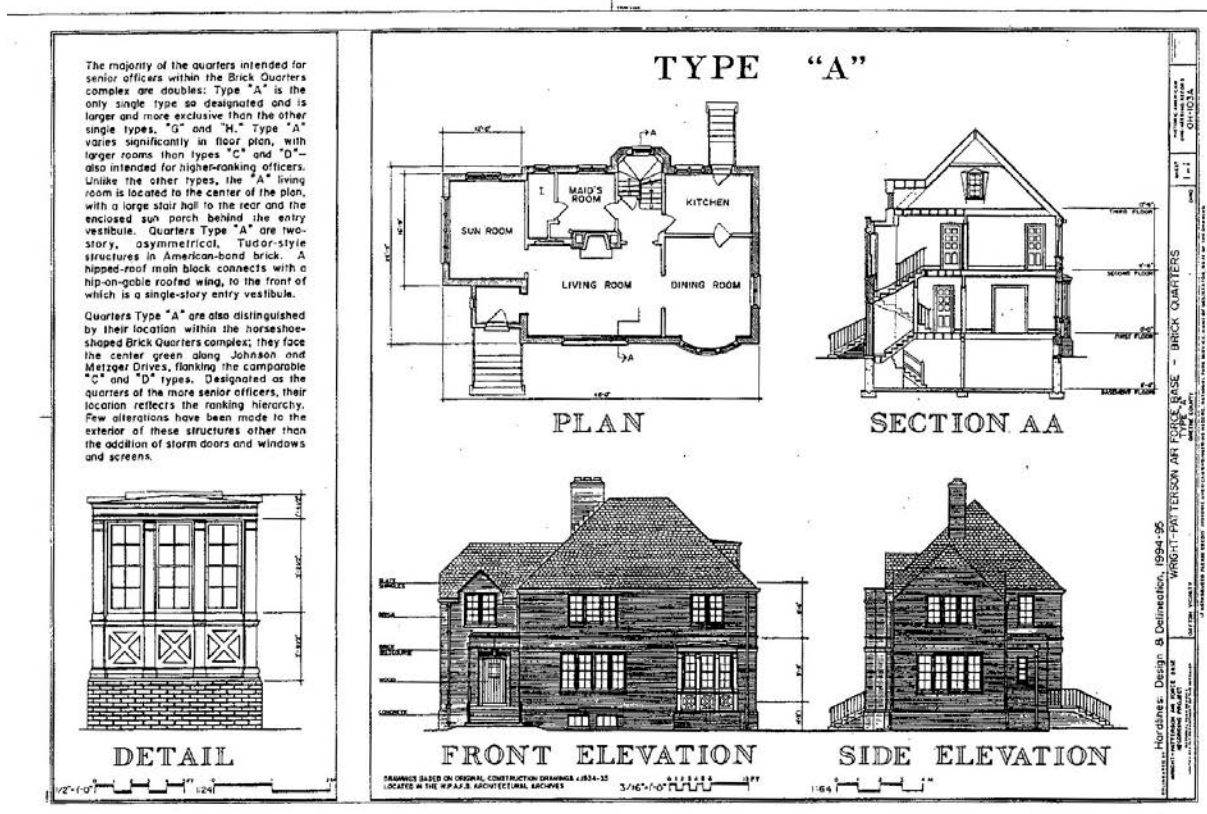
Photograph 13. Building 849, looking west, Field House/Gymnasium (non-contributing)

United States Department of the Interior
National Park Service

NATIONAL REGISTER OF HISTORIC PLACES CONTINUATION SHEET

Section Floor Plans Page 36
(Floor Plans taken from 1995 HABS documentation and accurately depict the current floor plans.)

Brick Quarters Historic District
Greene County, Ohio



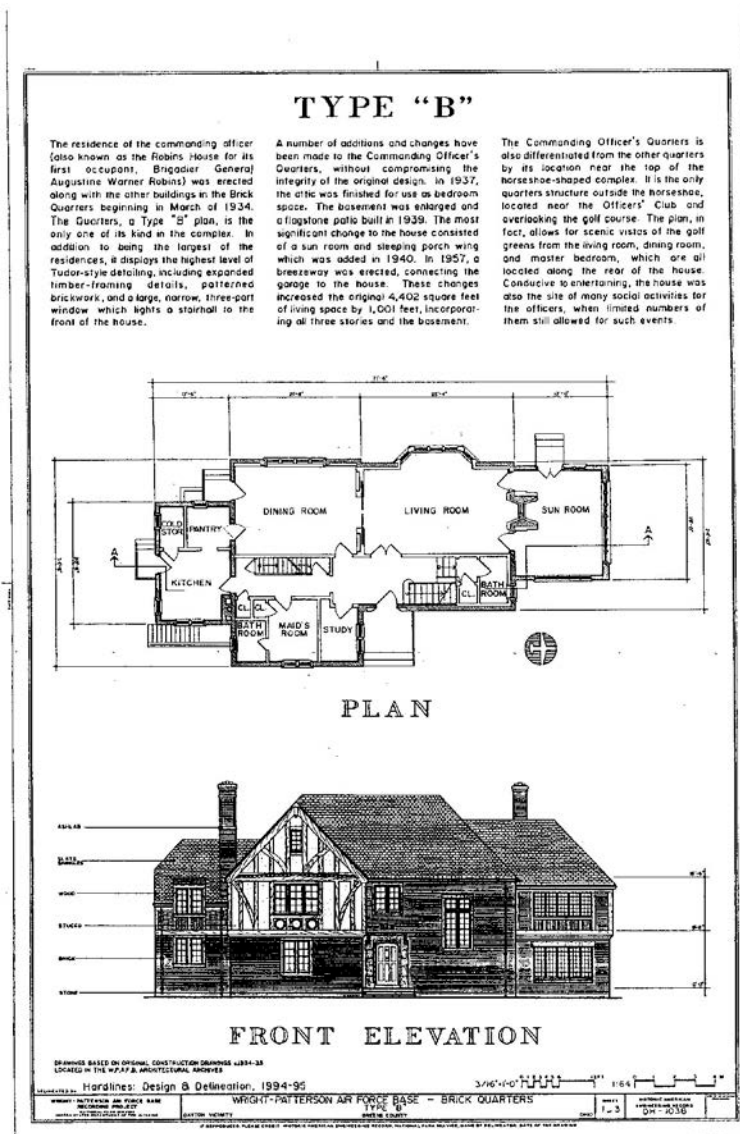
Type A Floor Plan

United States Department of the Interior
National Park Service

NATIONAL REGISTER OF HISTORIC PLACES
CONTINUATION SHEET

Section Floor Plans Page 37
(Floor Plans taken from 1995 HABS documentation and accurately depict the current floor plans.)

Brick Quarters Historic District
Greene County, Ohio



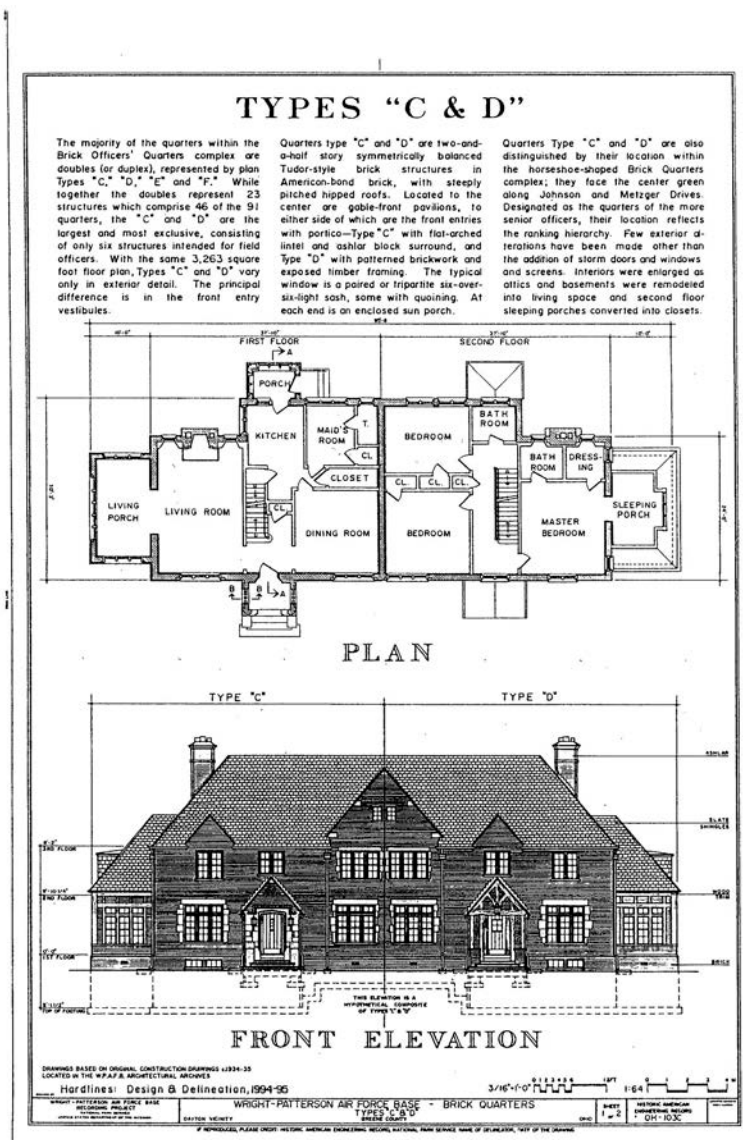
Type B Floor Plan

United States Department of the Interior
National Park Service

NATIONAL REGISTER OF HISTORIC PLACES CONTINUATION SHEET

Section Floor Plans Page 38
(Floor Plans taken from 1995 HABS documentation and accurately depict the current floor plans.)

Brick Quarters Historic District
Greene County, Ohio



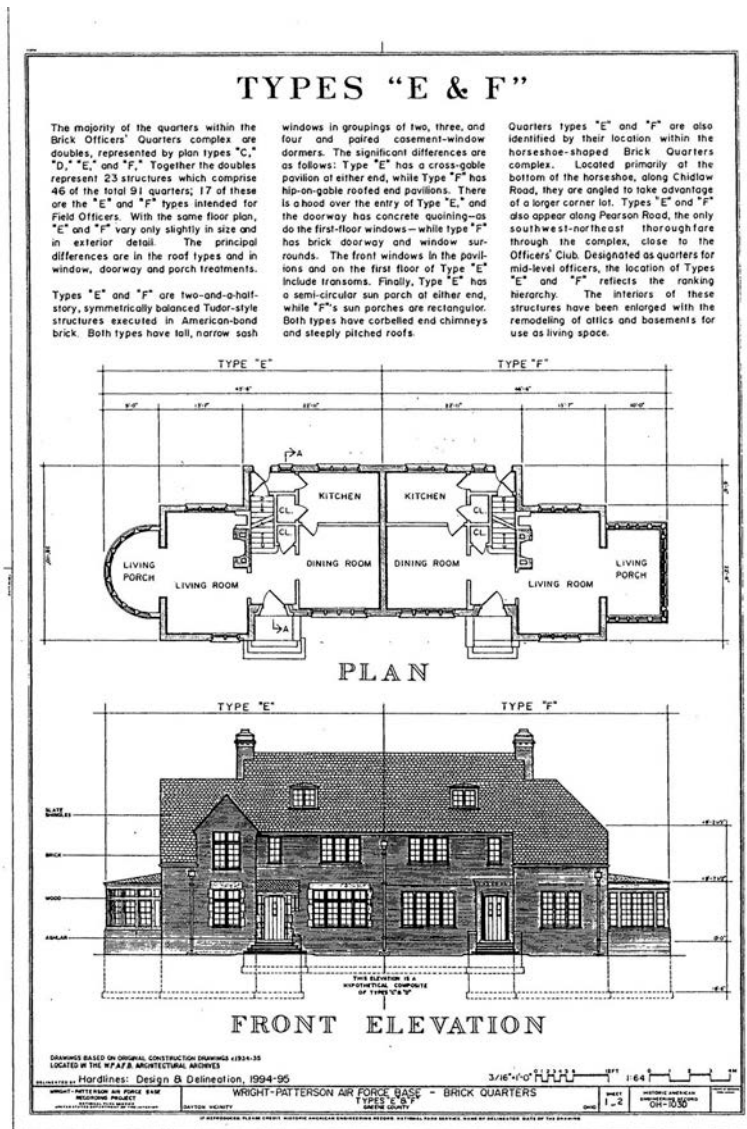
Types C & D Floor Plan

United States Department of the Interior
National Park Service

NATIONAL REGISTER OF HISTORIC PLACES
CONTINUATION SHEET

Section Floor Plans Page 39
(Floor Plans taken from 1995 HABS documentation and accurately depict the current floor plans.)

Brick Quarters Historic District
Greene County, Ohio



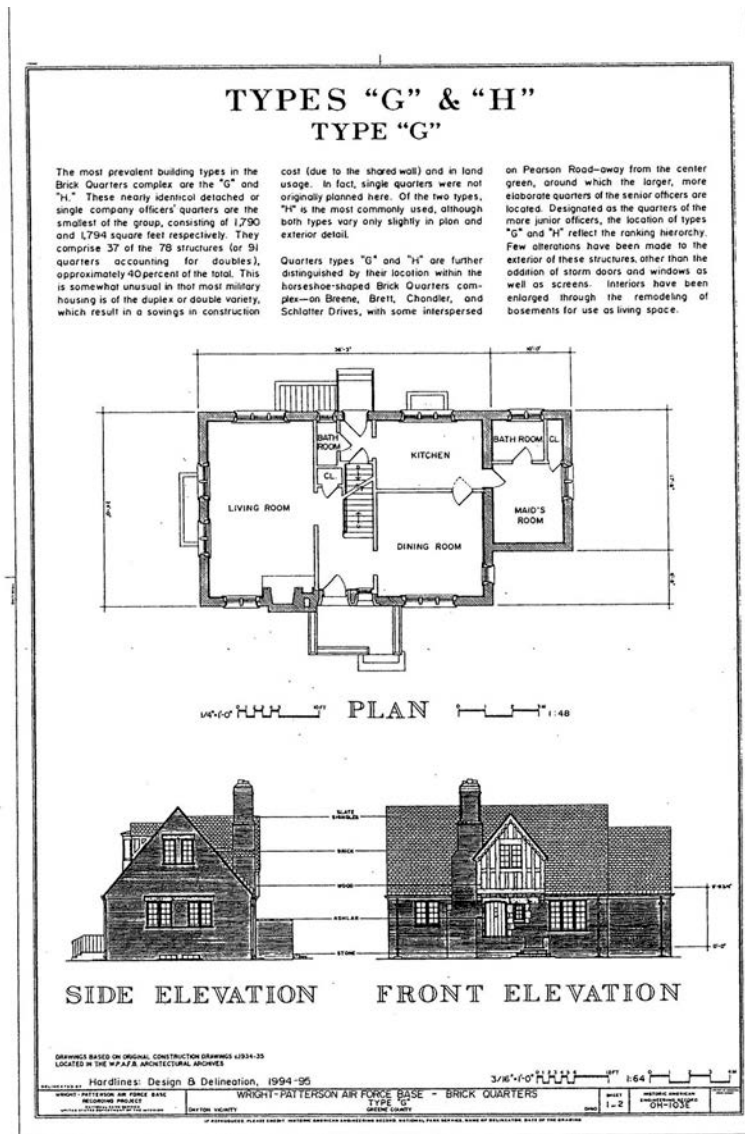
Types E & F Floor Plan

United States Department of the Interior
National Park Service

NATIONAL REGISTER OF HISTORIC PLACES CONTINUATION SHEET

Section Floor Plans Page 40
(Floor Plans taken from 1995 HABS documentation and accurately depict the current floor plans.)

Brick Quarters Historic District
Greene County, Ohio



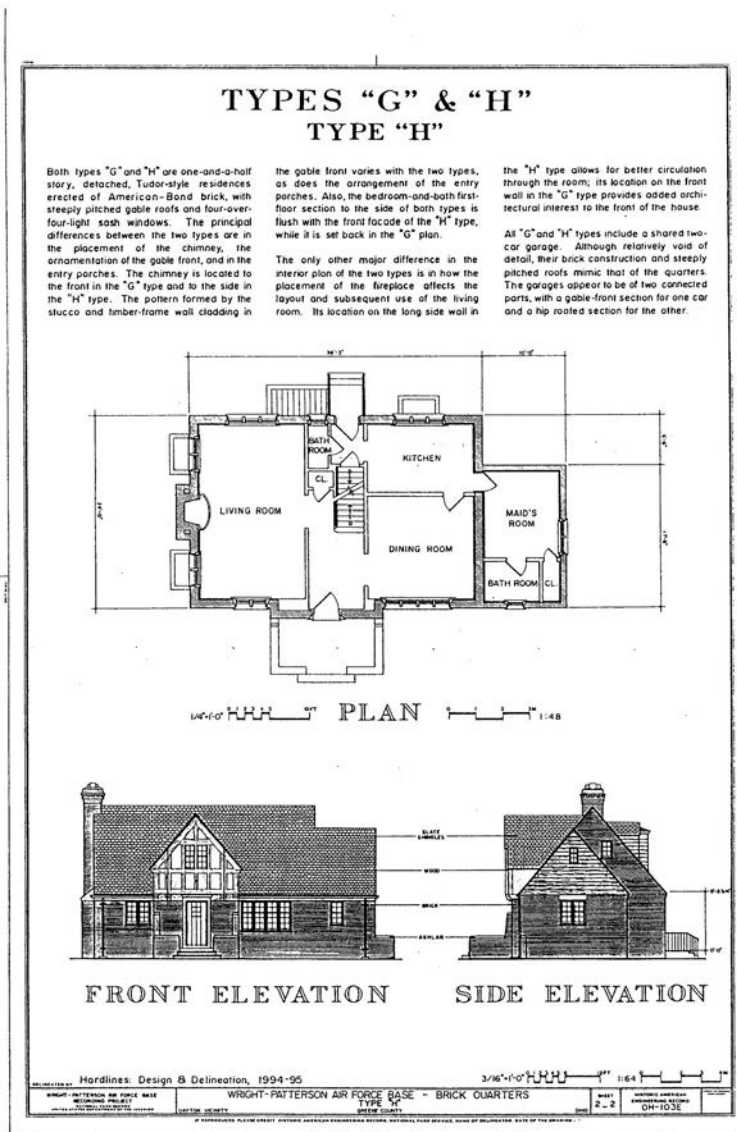
Type G Floor Plan

United States Department of the Interior
National Park Service

NATIONAL REGISTER OF HISTORIC PLACES CONTINUATION SHEET

Section Floor Plans Page 41
(Floor Plans taken from 1995 HABS documentation and accurately depict the current floor plans.)

Brick Quarters Historic District
Greene County, Ohio



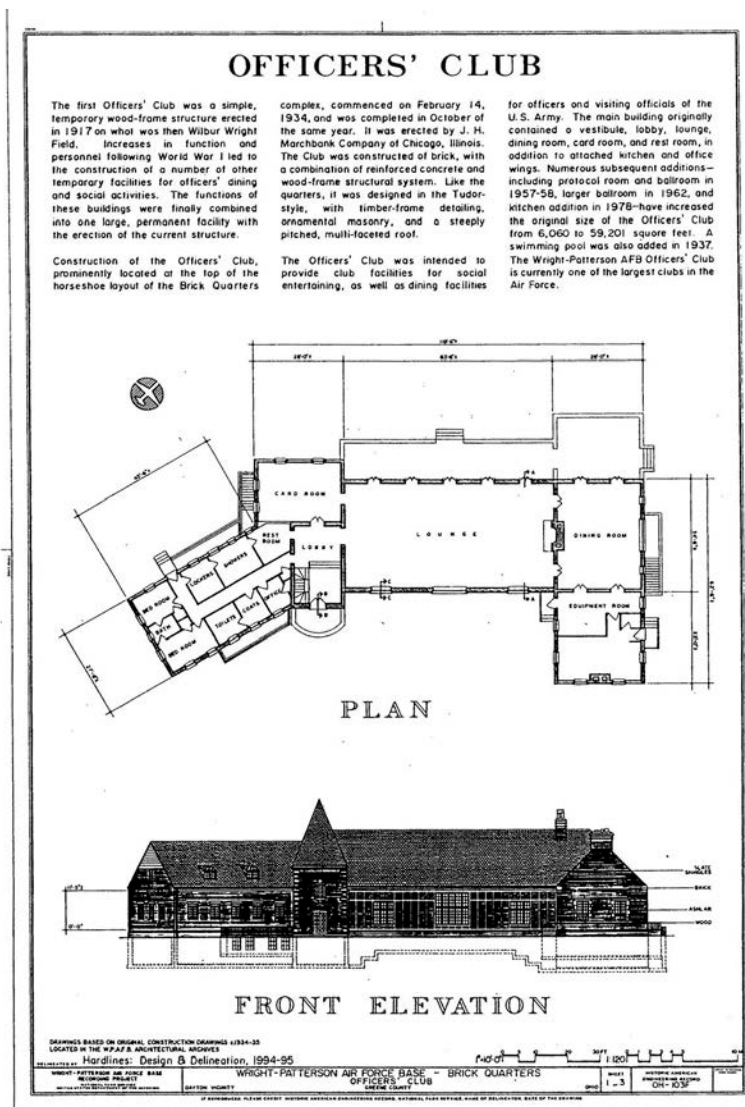
Type H Floor Plan

United States Department of the Interior
National Park Service

NATIONAL REGISTER OF HISTORIC PLACES
CONTINUATION SHEET

Section Floor Plans Page 42
(Floor Plans taken from 1995 HABS documentation and accurately depict the current floor plans.)

Brick Quarters Historic District
Greene County, Ohio



Officers' Club Floor Plan



























UNITED STATES DEPARTMENT OF THE INTERIOR
NATIONAL PARK SERVICE

NATIONAL REGISTER OF HISTORIC PLACES
EVALUATION/RETURN SHEET

Requested Action: Nomination

Property Name: Brick Quarters Historic District

Multiple Name:

State & County: OHIO, Greene

Date Received: 9/20/2018 Date of Pending List: 10/17/2018 Date of 16th Day: 11/1/2018 Date of 45th Day: 11/5/2018 Date of Weekly List:

Reference number: SG100003071

Nominator: State

Reason For Review:

Accept Return Reject 11/5/2018 Date

Abstract/Summary Comments: Level of significance: State; Areas of significance: Architecture, Community Planning and Development; Period of Significance: 1934-1937. Example of Army officers' housing, an Officers' Club, and related service facilities designed in the Tudor Revival style.

Recommendation/ Criteria: NR Criteria A and C.

Reviewer Lisa Deline

Discipline Historian

Telephone (202)354-2239

Date 11/5/18

DOCUMENTATION: see attached comments : No see attached SLR : No

If a nomination is returned to the nomination authority, the nomination is no longer under consideration by the National Park Service.



May 4, 2012

Paul F. Woodruff
Cultural Resource Program Manager
Environmental Quality Section
Environmental Branch
88 ABW/CEANQ
1450 Littrell Road
Wright-Patterson AFB OH 45433-5209

RE: Brick Quarters Historic District, WPAFB, Greene County, OH
Wright Brothers Hill/Memorial, WPAFB, Greene County, OH

Dear Paul:

Enclosed are the National Register of Historic Places nominations for the Brick Quarters Historic District and the Wright Brothers Hill/Memorial. I have signed both of these nominations for the Ohio Historic Preservation Office as the commenting State Historic Preservation Office.

The nominations have addressed all previous review comments and corrections. We look forward to having these two significant historic resources listed on the National Register of Historic Places.

Please do not hesitate to contact me if you have any additional questions regarding either of these nominations. Thank you for your time and effort to document these historic properties.

Sincerely,

Barbara Powers
Department Head
Inventory & Registration

OHIO HISTORICAL SOCIETY

Ohio Historic Preservation Office

1982 Velma Avenue, Columbus, Ohio 43211-2497 ph: 614.298.2000 fx: 614.298.2037

www.ohiohistory.org



Ernstein, Julie <julie_ernstein@nps.gov>

Acknowledging Receipt of Hand-Delivered National Register Documentation for Brick Quarters Historic District, Wright-Patterson Air Force Base (Greene Co.), Ohio

1 message

Ernstein, Julie <julie_ernstein@nps.gov>
To: michelle.j.brown30.civ@mail.mil
Cc: Lisa Deline <lisa_deline@nps.gov>



Thu, Sep 20, 2018 at 4:27 PM

Dear Ms. Brown,

This note is sent to formally acknowledge receipt of the National Register submission, you hand-carried to our office this afternoon. The submission for the above-named property includes hard copy of a letter from the Ohio SHPO to the Cultural Resource Program Manager at Wright-Patterson AFB (dated May 4, 2012), a cover sheet with wet signatures from the Air Force FPO as certifying authority and the authorized official from the Ohio SHPO as the commenting authority, a hard copy of the nomination, and a cd-ROM.

Many thanks for your submission. We will get this logged and into review promptly. Should our NR historian, Lisa Deline, have any questions she will be in touch.

Best,

Julie

Julie H. Ernstein, Ph.D., RPA
Acting Chief, National Register & National Historic Landmarks Program
Deputy Keeper of the National Register
DOI-National Park Service
1849 C St., NW - Mail Stop 7228
Washington, DC 20240

office.: 202.354.2217
cell: 202.440.2764

**FIND YOUR
PARK**

