



LEVI H. MANNING HOUSE

9 Paseo Redondo

Tucson, Pima County, Arizona

Photographer : M. Wilson(1978)

Negative : ASPB

View of painted ceiling inside of
arched rotunda

MAY 30 1979

JUL 27 1979

DOE

6 of 7



LEVI H. MANNING HOUSE

MAY 30 1979

9 Paseo Redondo

Tucson, Pima County, Arizona

Photographer : M. Wilson (1978)

Negative : ASPB

View looking northwest at banded

cornice

2 of 7

JUL 27 1979
DOE



LEVI H. MANNING HOUSE

MAY 30 1979

9 Paseo Redondo

A23-3

JUL 27 1979

Tucson, Pima County, Arizona

DOE

Photographer : M. Wilson(1978)

Negative : ASPB

View of portion of front facade with
turrets and enclosed arched collonades

3 of 7



LEVI H. MANNING HOUSE

MAY 30 1979

9 Paseo Redondo

JUL 27 1979 ^{DOE}

Tucson, Pima County, Arizona

Photographer: M. Wilson(1978)

Negative: ASPB

View looking east toward main entrance

4 of 7



LEVI H. MANNING HOUSE

9 Paseo Redondo

Tucson, Pima County, Arizona

Photographer : M. Wilson(1978)

Negative : ASPB

View looking northwest at arched denticulated rotunda at south end of building

JUL 27 1979
DOE

5 of 7



LEVI H. MANNING HOUSE

MAY 30 1979

9 Paseo Redondo

Tucson, Pima County, Arizona

Photographer : M. Wilson (1978)

Negative : ASPB

JUL 27 1979
DOE

View looking southwest toward east
facade of building

6087

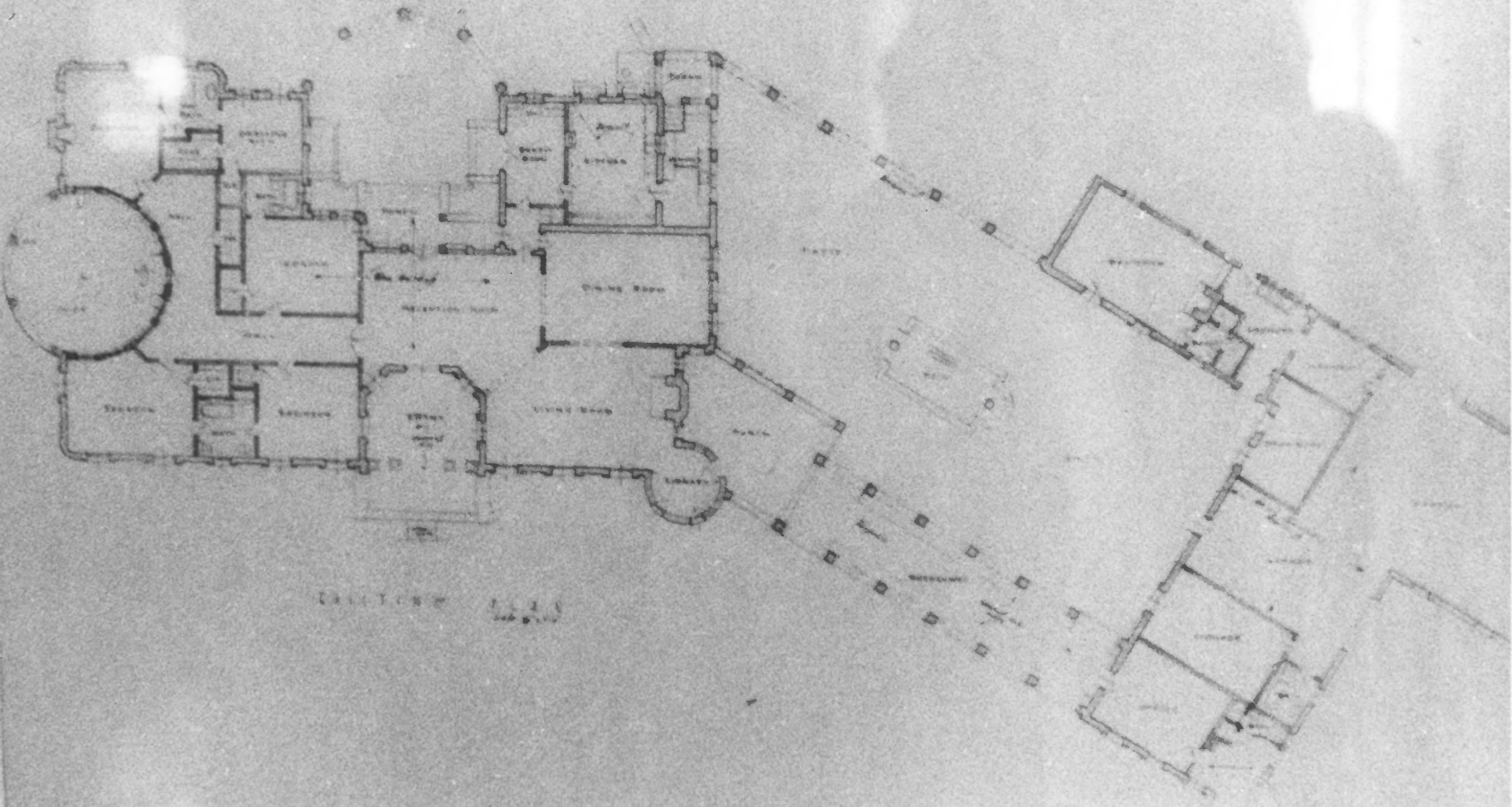


EXHIBIT 111
1968

LEVI H. MANNING HOUSE

9 Paseo Redondo

MAY 30 1979

Tucson, Pima County, Arizona

Photographer : M. Wilson(1978)

Negative : ASPB

DOE
JUL 27 1979

View of original floor plan in glass
frame displayed inside building

7 of 7