

Founder's Square, northwest corner
Neshoba County Fair Historic District
Coldwater Community, Neshoba County,
Mississippi

Jody Cook, Mississippi Department of
Archives and History

August, 1979

Photo No. 1 of 7

APR 22 1980

FEB 20 1980



Founder's Square Speaker's Pavilion, east
facade looking south

Neshoba County Fair Historic District
Coldwater Community, Neshoba County,
Mississippi

Jody Cook, Mississippi Department of
Archives and History

APR 22 1980

August, 1979

Photo No. 2 of 7

FEB 20 1980



Bobo Cabin, No. 121, front (south) facade
Neshoba County Fair Historic District
Coldwater Community, Neshoba County,
Mississippi

Jody Cook, Mississippi Department of
Archives and History

August, 1979

Photo No. 3 of 7

APR 22 1980



Founder's Square, northeast corner
Neshoba County Fair Historic District
Coldwater Community, Neshoba County,
Mississippi

Jody Cook, Mississippi Department of
Archives and History

August, 1979

Photo No. 4 of 7

APR 22 1980

FEB 20 1980



Racetrack, looking northeast
Neshoba County Fair Historic District
Coldwater Community, Neshoba County,
Mississippi

Jody Cook, Mississippi Department of
Archives and History

August, 1979

Photo No. 5 of 7

APR 22 1980

FEB 20 1980



Cabins 701-731, Woodland Hills, looking
northeast

Neshoba County Fair Historic District
Coldwater Community, Neshoba County,
Mississippi

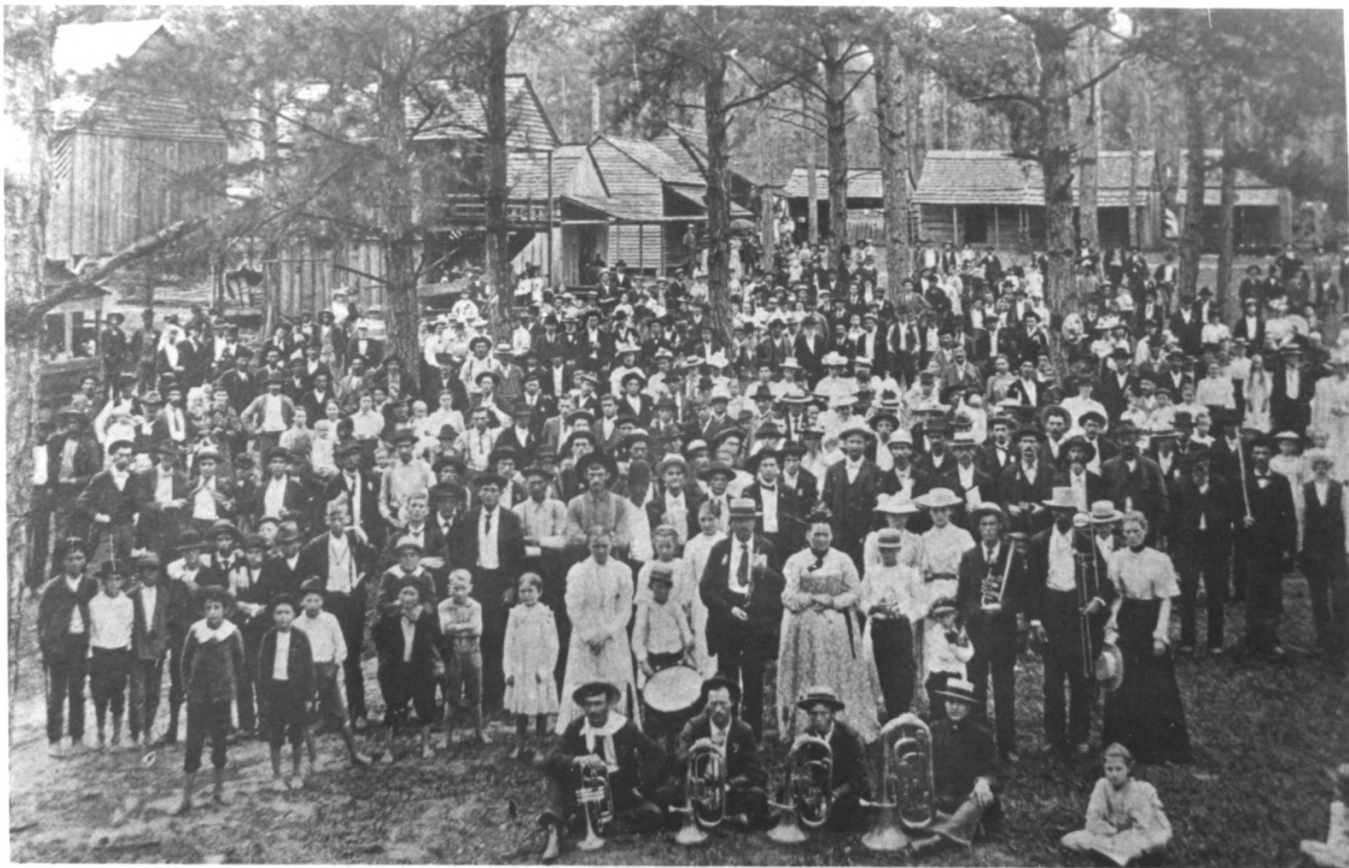
Jody Cook, Mississippi Department of
Archives and History

August, 1979

Photo No. 6 *of 7*

APR 22 1980

FEB 20 1980



Neshoba County Fair, 1895. In foreground is Jones Family Brass Band from Kemper County, hired to play for the fair that year.

Founder's Square, 1895, from southwest
corner, looking north (from F. Mars, Witness
in Philadelphia)

Neshoba County Fair Historic District
Coldwater Community, Neshoba County,
Mississippi

Jody Cook, Mississippi Department of
Archives and History

August, 1979

Photo No. 7 of 7

APR 22 1980

FEB 20 1980