



No. 1

Union Station, Los Angeles, CA

Robert Cameron, Photographer

Photo taken 1976

NOV 13 1980

Neg. at 235 Montgomery Street,
San Francisco

Bird's-eye view looking north -

northeast

89 AUG 1979



No. 2

Union Station, Los Angeles, CA

Mason Dooley, Photographer

Photo taken January, 1978

NOV 13 1980

Neg. located at Room 655

City Hall, Los Angeles

Bird's-eye view looking east

27 AUG 1979



NEG 3 1980

No. 3

Union Station, Los Angeles, CA

Rey Hernandez, Photographer

Photo taken January, 1978

Neg. located at Room 655

City Hall, Los Angeles

West facade - looking southeast

27 AUG 1979



No. 4

Union Station, Los Angeles, CA

Rey Hernandez, Photographer

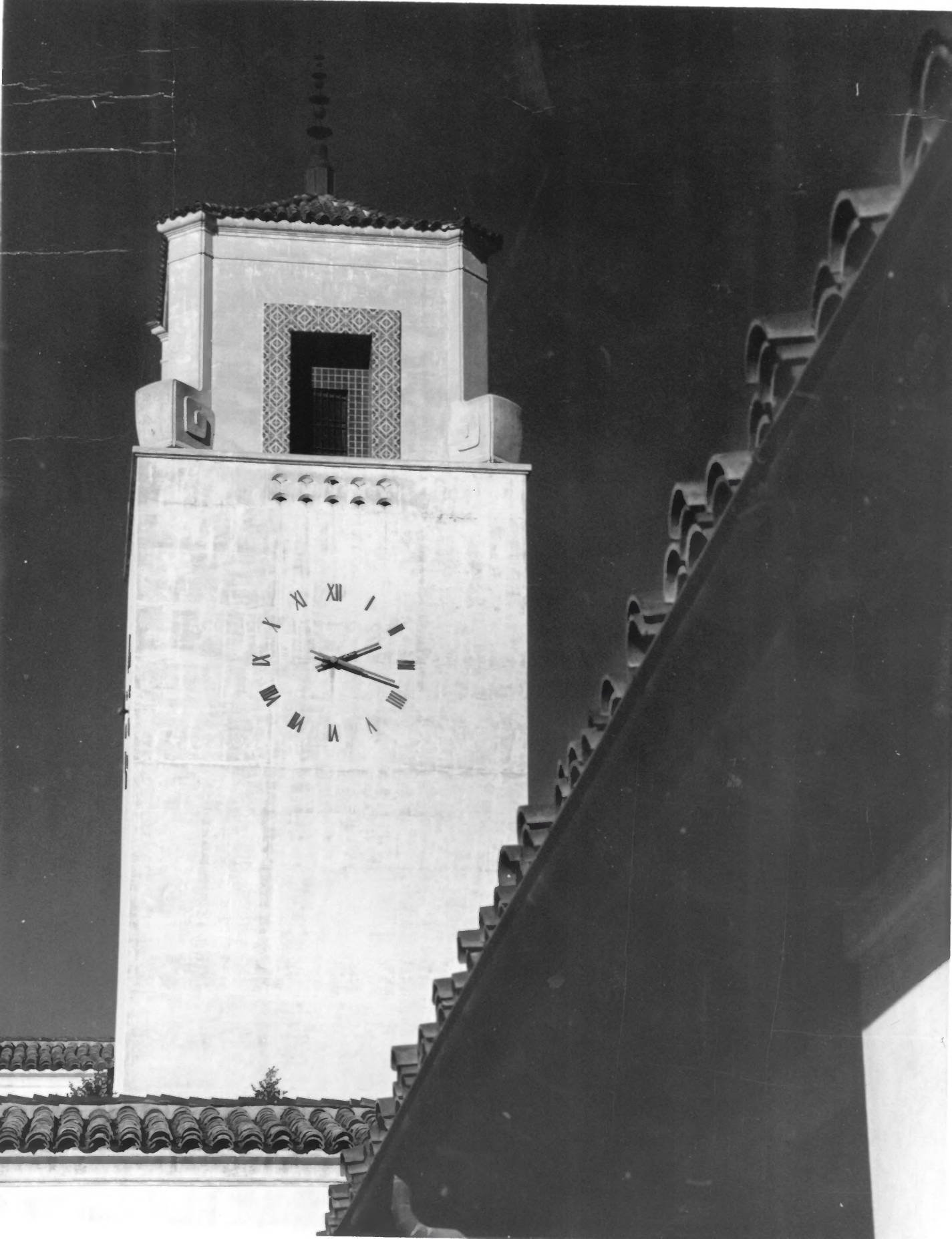
Photo taken January, 1978

Neg. located at Room 655

27 AUG 1979

City Hall, Los Angeles

West facade - looking northeast



No. 5

Union Station, Los Angeles, CA

Rey Hernandez, Photographer

Photo taken January, 1978

Neg. located at Room 655

City Hall, Los Angeles

View of tower - looking north

27 AUG 1979



No. 6

Union Station, Los Angeles, CA

Rey Hernandez, Photographer

Photo taken January, 1978

Neg. located at Room 655

City Hall, Los Angeles

Typical window - north hall

NOV 13 1978
27 AUG 1979



UNION STATION

No. 7

Union Station, Los Angeles, CA

Rey Hernandez, Photographer

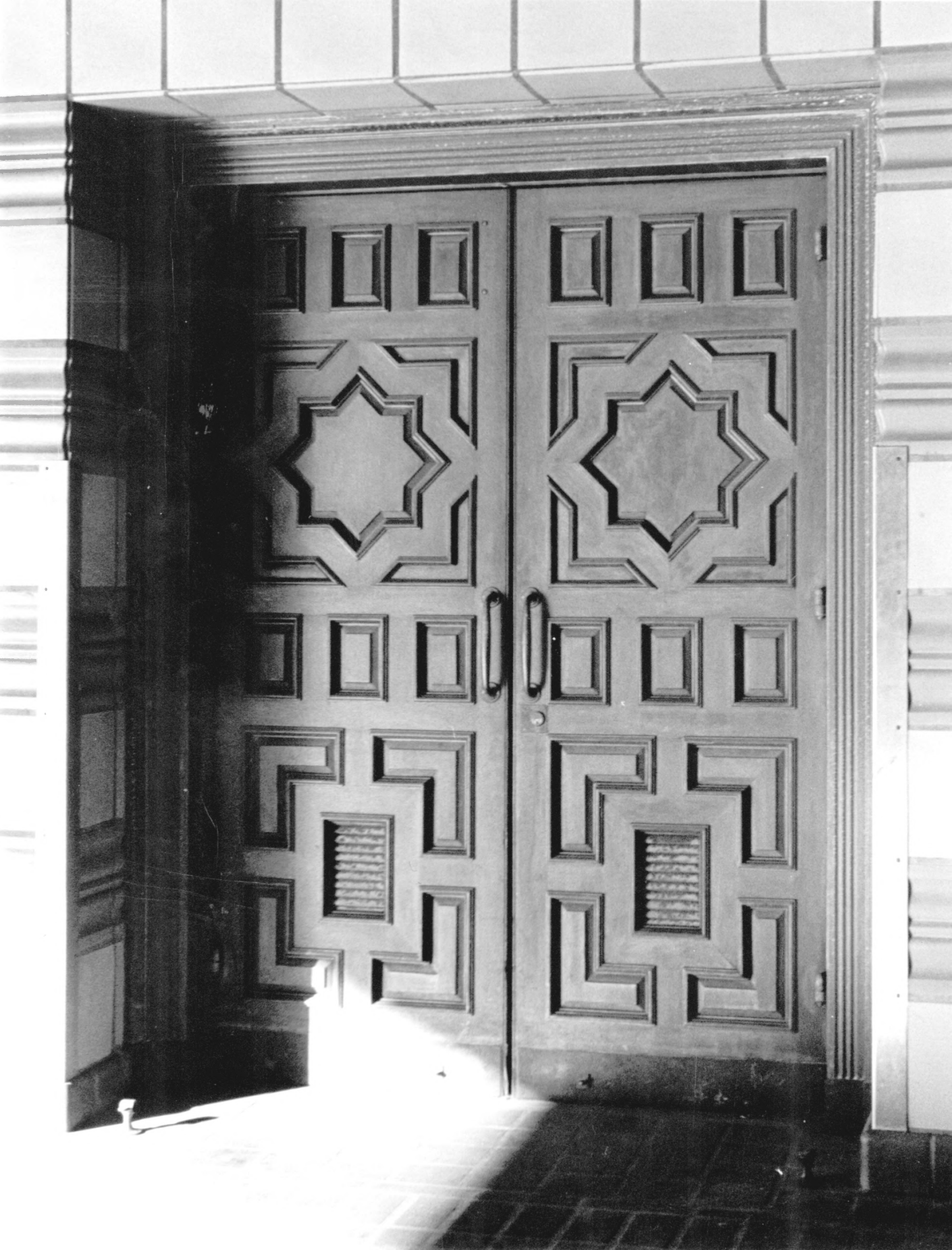
Photo taken January, 1978

Neg. located at Room 655

City Hall, Los Angeles

Main entrance - looking east

NOV 13 1980
27 AUG 1978



No. 8

Union Station, Los Angeles, CA

Rey Hernandez, Photographer

Photo taken January, 1978

Neg. located at Room 655

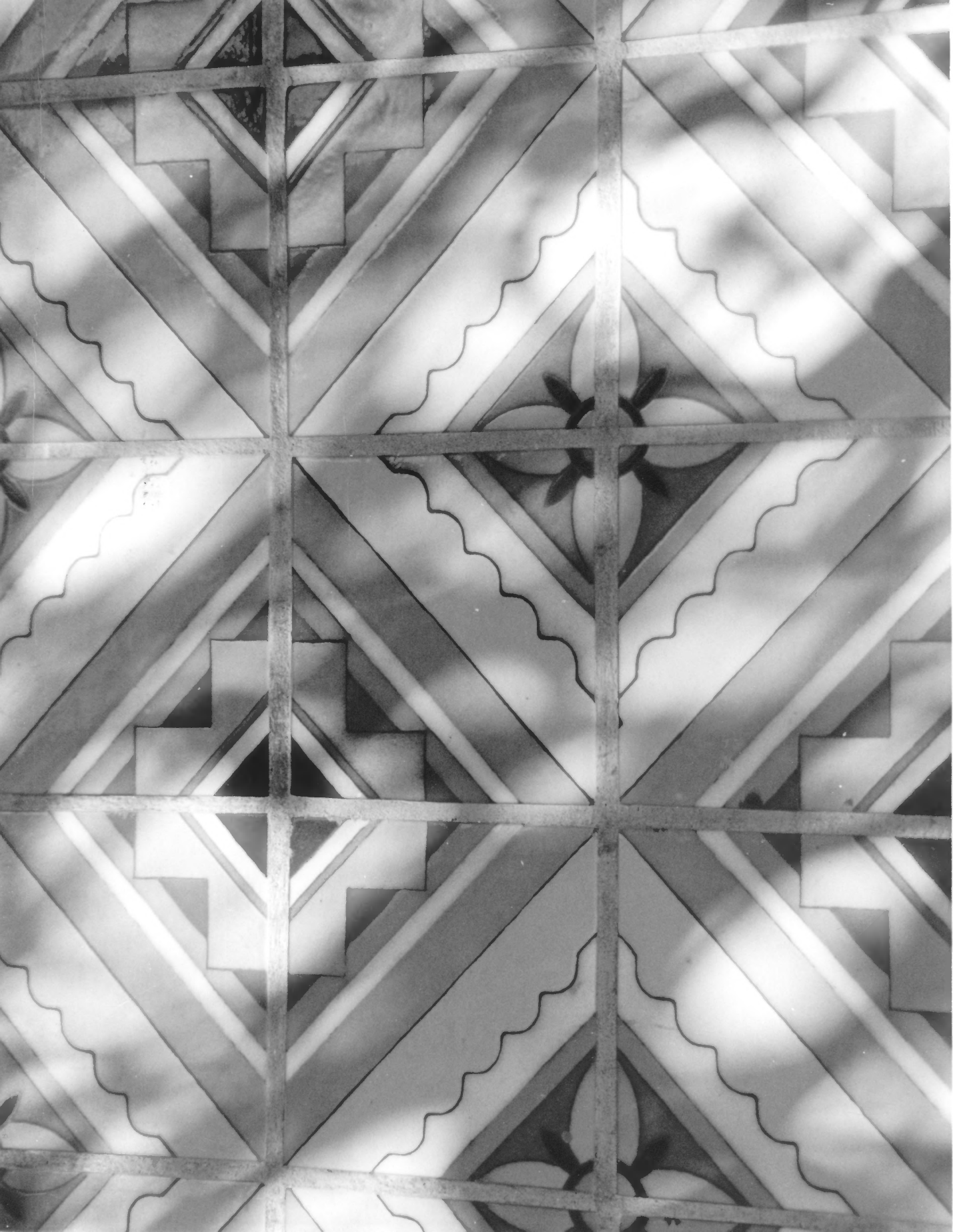
City Hall, Los Angeles

Entrance to lower parking -

looking south

NOV 13 1980

27 AUG 1978



No. 9

Union Station, Los Angeles, CA

Rey Hernandez, Photographer

Photo taken January, 1978

Neg. located at Room 655

NOV 13 1980

City Hall, Los Angeles

Typical wall tile pattern

27 AUG 1979



NOV 13 1980

No. 10

Union Station, Los Angeles, CA

Rey Hernandez, Photographer

Photo taken January, 1978

Neg. located at Room 655

City Hall, Los Angeles

East Hall (main waiting room)

looking west

27

AUG 1978



No. 11

Union Station, Los Angeles, CA.

Rey Hernandez, Photographer

Photo taken January 1978

Neg. located at Room 655

City Hall, Los Angeles

Main south arcade - looking north

NOV 13 1980

87 AUG 1979



No. 12

Union Station, Los Angeles, CA

Rey Hernandez, Photographer

Photo taken, January, 1978

Neg. located at Room 655

City Hall - Los Angeles

South patio - looking west

NOV 13 1978

27 AUG 1979



No. 13

Union Station, Los Angeles, CA.

Ray Hernandez, Photographer

Photo taken, January, 1978

Neg. located at Room 655

City Hall, Los Angeles

South end of south arcade -

looking north

NOV 13 1980

27 AUG 1979



23
P. ~~262~~

Los Angeles Union passenger
Terminal

NOV 1 1930

Los Angeles ca.

D.O.E. file

Pg 262



Los Angeles Union Passenger Terminal
Los Angeles CO.

D.O.E. File

Pg 22

NOV 13 1961



Los Angeles union passenger Terminal

Los Angeles Co.
D.O.E. file

Pg 23

NOV 13 1980



Los Angeles Union Passenger
Terminal

D.O.E. file

Los Angeles Co.

Pg 23

NOV 13 1980



LOS ANGELES UNION PASSENGER TERMINAL
800 N. Alameda Street Los Angeles County
Los Angeles, California

Photo by James Arbuckle, July 24, 1980
Negative at State Office of Historic Preserv.
P.O. Box 2390, Sacramento, CA 95811

Photo Set II: 1 of 18

NOV 13 1980

View east at north arcade through archway to
parking area; baggage handling and railway
mail facilities in distance.

SEP 3-1980



LOS ANGELES UNION PASSENGER TERMINAL
800 N. Alameda Street Los Angeles County
Los Angeles, California

Photo by James Arbuckle July 24, 1980
Negative at State Office of Hist. Preservation
P. O. Box 2390, Sacramento, CA 95811

Photo Set II: 2 of 18

NOV 13 1980

View north from parking area behind north
arcade showing ramp to upper level of baggage
handling & railway mail facilities. Post
Office in distance.

SLP 3-1030



LOS ANGELES UNION PASSENGER TERMINAL

800 N. Alameda Street
Los Angeles, California

Los Angeles County

NOV 13 1980

Photo by James Arbuckle

July 24, 1980

Negative at State Office of Hist. Preservation

P. O. Box 2390, Sacramento, CA 95811

Photo Set II: 3 of 18

SEP 3 - 1980

View northeast from parking area behind north
arcade showing baggage handling and railway
mail facilities.



AMERICAN T.C.C.

NO PARKING

200

LOS ANGELES UNION PASSENGER TERMINAL
800 N. Alameda Street Los Angeles County
Los Angeles, California

Photo by James Arbuckle July 24, 1980
Negative at State Office of Hist. Preservation
P. O. Box 2390, Sacramento, CA 95811
Photo Set II: 4 of 18 NOV 13 1980

SEP 3 - 1980

View north from parking area behind north
arcade showing baggage handling facility.



TRACK
5

TRACK
6

TRACK
5

LOS ANGELES UNION PASSENGER TERMINAL
800 N. Alameda Street
Los Angeles, California

Los Angeles Co.

NOV 13 1980

Photo by James Arbuckle July 24, 1980
Negative at State Office of Hist. Preservation
P. O. Box 2390, Sacramento, CA 95811

Photo Set II: 5 of 18

SEP 3 - 1980

View looking east showing interior of
pedestrian subway to tracks.



LOS ANGELES UNION PASSENGER TERMINAL
800 N. Alameda Street Los Angeles County
Los Angeles, California

Photo by James Arbuckle July 24, 1980
Negative at State Office of Hist. Preservation
P.O. Box 2390, Sacramento, CA 95811

Photo Set II: 6 of 18

NOV 13 1980

View looking south from pedestrian subway
showing ramp leading to tracks 7 and 8.

SEP 3 - 1980



STATION

LOS ANGELES UNION PASSENGER TERMINAL
800 N. Alameda Street Los Angeles County
Los Angeles, California

Photo by James Arbuckle July 24, 1980
Negative at State Office of Hist. Preservation
P. O. Box 2390, Sacramento, CA 95811

Photo Set II: 7 of 18

NOV 3 1980

SEP 3 - 1980

View looking south from platform showing
ramp to pedestrian subway for access to
waiting room.



LOS ANGELES UNION PASSENGER TERMINAL

800 N. Alameda Street

Los Angeles County

Los Angeles, California

Photo by James Arbuckle July 24, 1980

Negative at State Office of Hist. Preservation

P. O. Box 2390, Sacramento, CA 95811

Photo Set II: 8 of 18

NOV 13 1980

View looking south from platform showing
stub-end tracks and parapet atop retaining
wall in distance.

SEP 3 - 1980



LOS ANGELES UNION PASSENGER TERMINAL
800 N. Alameda Street Los Angeles County
Los Angeles, California

Photo by James Arbuckle July 24, 1980
Negative at State Office of Hist. Preservation
P. O. Box 2390, Sacramento, CA 95811

Photo Set II: 9 of 18 NOV 13 1980

SEP 3 - 1980

View looking north from platform showing
butterfly sheds.



LOS ANGELES UNION PASSENGER TERMINAL
800 N. Alameda Street Los Angeles County
Los Angeles, California

Photo by Aaron Gallup February 28, 1980
Negative at State Office of Hist. Preservation
P. O. Box 2390, Sacramento, CA 95811

Photo Set II: 10 of 18

NOV 13 1980

View looking east showing south retaining wall.
Tracks are located on upper level. Two light
colored bays at left are part of 1950's
Railway Express addition.

SEP 3 - 1980



ALLRIGHT
AUTO PARK

LOOK OUT FOR VEHICLES

PUBLIC
PARKING
150
ALLRIGHT
ENTERED

LOOK OUT FOR VEHICLES

GARAGE 7-11
CLOSE 8-11
ENTER HERE

LOS ANGELES UNION PASSENGER TERMINAL

800 N. Alameda Street

Los Angeles County

Los Angeles, California

Photo by Aaron Gallup

February 28, 1980

Negative at State Office of Hist. Preservation

P. O. Box 2390, Sacramento, CA 95811

Photo Set II: 11 of 18

NOV 13 1980

View north showing 1950's Railway Express
addition.

SEP 3-

08-11-8 932



LOS ANGELES UNION PASSENGER TERMINAL
800 N. Alameda Street Los Angeles County
Los Angeles, California

Photo & negative: Union Station (AT&SF RR)
800 N. Alameda Street, Los Angeles, CA

Photo Set II: 12 of 18

1979
NOV 13 1980

SEP 3 - 1980

View south showing relationship of main
terminal building to service facilities.
Mail, baggage and express building on left.



COMMISSARY

LOS ANGELES UNION PASSENGER TERMINAL
800 N. Alameda Street, Los Angeles County
Los Angeles, California

Photo & negative: Union Station (AT&SF RR)
800 N. Alameda Street, Los Angeles, CA 1979

Photo Set II: 13 of 18

View south showing ramp to express facilities
on upper level at south end of complex.



LOS ANGELES UNION PASSENGER TERMINAL
800 N. Alameda Street Los Angeles County
Los Angeles, California

SEP 3 - 19

Photo & negative: Union Station (AT&SF)
800 N. Alameda St., Los Angeles, CA 1979

Photo Set II: 14 of 18

NOV 13 1980

View west showing upper level of Railway
Express addition.



GENERAL OFFICE

111111
111111
111111

LOS ANGELES UNION PASSENGER TERMINAL
800 N. Alameda Street Los Angeles County
Los Angeles, California

Photo & negative: Union Station (AT&SF RR)
800 N. Alameda Street, Los Angeles, CA

Photo Set II: 15 of 18

SEP 3 - 1979
1980

NOV 13 1980

View north showing Railway Express office and shipping facilities on right (upper or track level). Railway Express addition shows at left.



LOS ANGELES UNION PASSENGER TERMINAL
800 N. Alameda Street Los Angeles County
Los Angeles, California

Photo & Negative: Union Station (AT&SF RR)
800 N. Alameda Street, Los Angeles, CA

Photo Set II: 16 of 18 1979

NOV 13 1980

SEP 3 - 1980

View east on upper (track) level showing
Railway Express offices, stub-end tracks
with butterfly sheds, and parapet atop
retaining wall.



LOS ANGELES UNION PASSENGER TERMINAL
800 N. Alameda Street Los Angeles County
Los Angeles, California

Photo & negative: Union Station (AT&SF RR)
800 N. Alameda Street, Los Angeles, CA

Photo Set II: 17 of 18

1979

1980

SEP 3 - 1980

View looking west showing stub-end tracks,
bumpers, and butterfly sheds. Railway Express
office in background.



LOS ANGELES UNION PASSENGER TERMINAL
800 N. Alameda Street Los Angeles County
Los Angeles, California

NOV 13 1980

SEP 3 - 1980

Photo & Negative: Union Station (AT & SF RR)
800 N. Alameda Street, Los Angeles, CA

Photo Set II: 18 of 18 1979

View looking east from main terminal building
showing pedestrian subway to tracks.