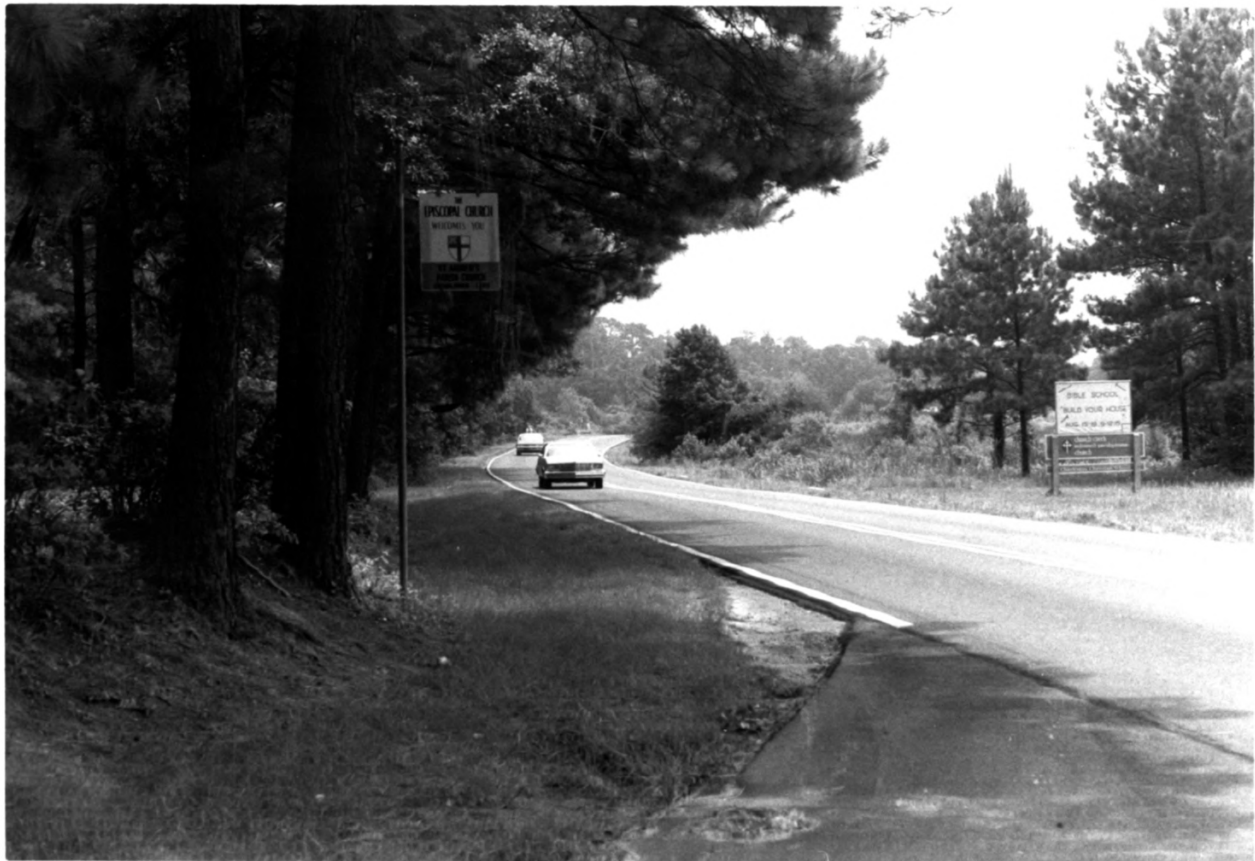


WELCOME TO
EPISCOPAL CHURCH
WELCOMES YOU
SUNDAY
SCHOOL

BIBLE SCHOOL
WALK YOUR AID
AND HEAR FROM

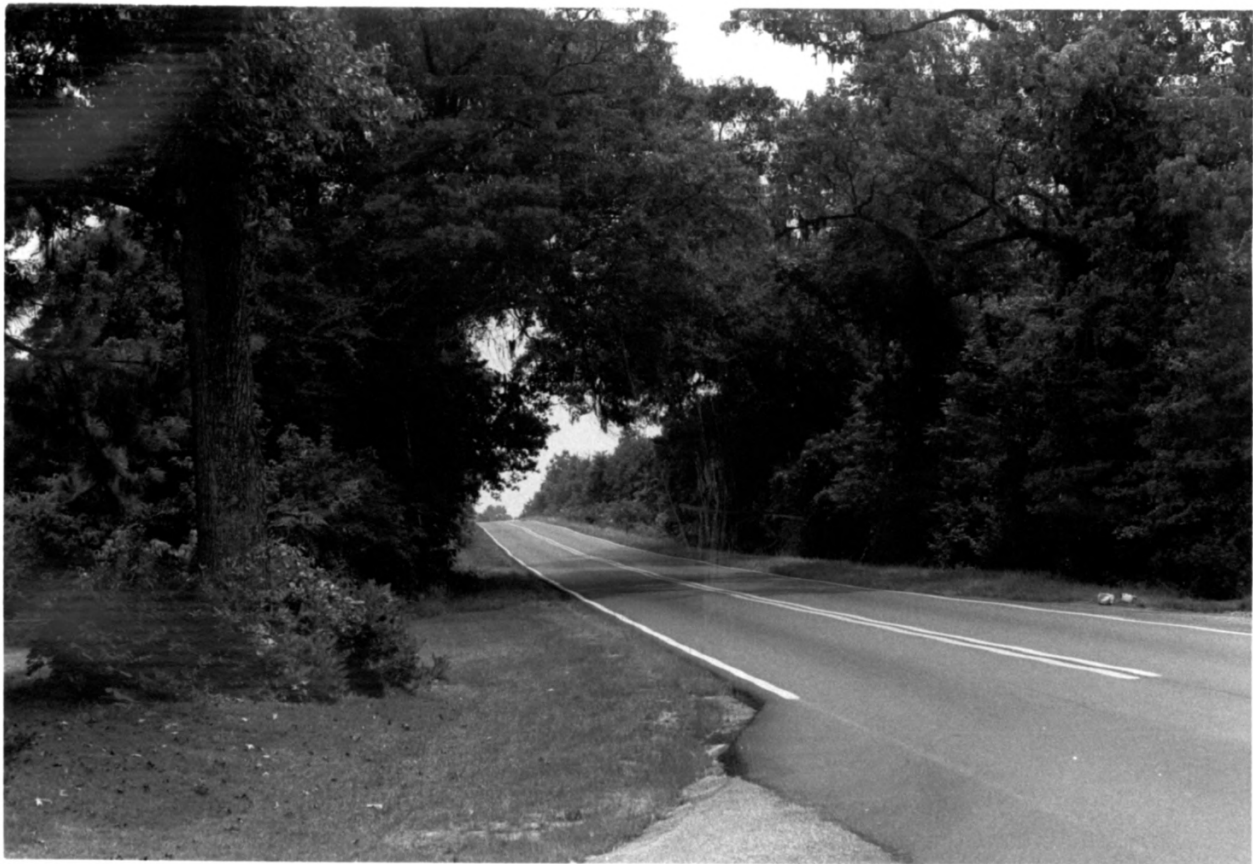
WELCOMES YOU
SUNDAY
SCHOOL



Ashley River Road
Charleston County, South Carolina
Suzanne Pickens Wylie, August 1983
South Carolina Dept. of Archives and
History
Columbia, South Carolina
looking south toward the Church Creek
Bridge
Photo #1



Ashley River Road
Charleston County, South Carolina
Suzanne Pickens Wylie, August 1983
South Carolina Dept. of Archives and
History, Columbia, South Carolina
looking north from St. Andrews Church
Photo #2



Ashley River Road

Charleston County, South Carolina

Suzanne Pickens Wylie, August 1983

South Carolina Dept. of Archives and

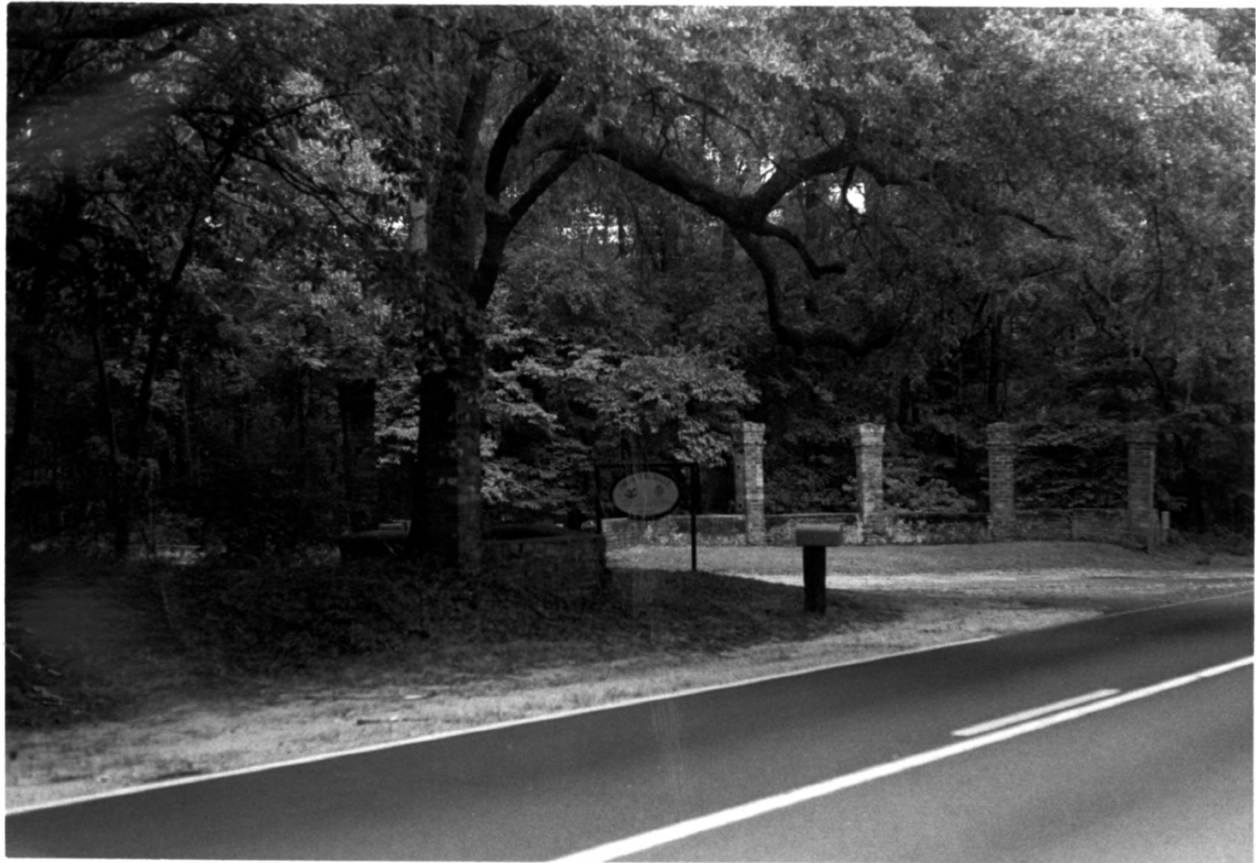
History, Columbia, South Carolina

looking north

Photo #3



Ashley River Road
Charleston County, South Carolina
Suzanne Pickens Wylie, August 1983
South Carolina Dept. of Archives and
History, Columbia, South Carolina
looking south
Photo #4



Ashley River Road

Charleston County, South Carolina

Suzanne Pickens Wylie, August 1983

South Carolina Dept. of Archives and

History, Columbia, South Carolina

entrance to Drayton Hall

Photo #5



Ashley River Road

Charleston County, South Carolina

Suzanne Pickens Wylie, August 1983

South Carolina Dept. of Archives and

History, Columbia, South Carolina

looking north

Photo #6



Ashley River Road
Charleston County, South Carolina
Suzanne Pickens Wylie, August 1983
South Carolina Dept. of Archives and
History, Columbia, South Carolina
looking south from Middleton Place
Photo #7



Ashley River Road

Charleston County, South Carolina

Suzanne Pickens Wylie, August 1983

South Carolina Dept. of Archives and

History, Columbia, South Carolina

entrance to Middleton Place.

Photo #8



Ashley River Road
Charleston County, South Carolina
Suzanne Pickens Wylie, August 1983
South Carolina Department of Archives and
History, Columbia, South Carolina
looking north
Photo #9



Ashley River Road
Charleston County, South Carolina
Suzanne Pickens Wylie, August 1983
South Carolina Department of Archives
and History, Columbia, South Carolina
junction of Ashley River Road (S.C. Hwy.61,
and S.C. Hwy. 165
Photo #10



Ashley River Road

Charleston County, South Carolina

Suzanne Pickens Wylie, August 1983

South Carolina Dep. of Archives and

History, Columbia, South Carolina

junction of Ashley River Road (S.C. Hwy.

61). and S.C. Hwy. 165

Photo #11



Ashley Road 4B

SC