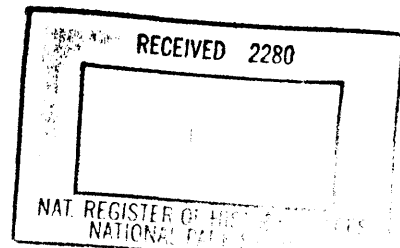


United States Department of the Interior
National Park Service

394



National Register of Historic Places Registration Form

This form is for use in nominating or requesting determinations for individual properties and districts. See instructions in *How to Complete the National Register of Historic Places Registration Form* (National Register Bulletin 16A). Complete each item by marking "x" in the appropriate box or by entering the information requested. If any item does not apply to the property being documented, enter "N/A" for "not applicable." For functions, architectural classification, materials, and areas of significance, enter only categories and subcategories from the instructions. Place additional entries and narrative items on continuation sheets (NPS Form 10-900a). Use a typewriter, word processor, or computer, to complete all items.

1. Name of Property

Historic name: Leavenworth County Courthouse

Other name/site number: _____

2. Location

300 Walnut Street not for publication

Leavenworth vicinity

state Kansas code KS county Leavenworth code 103 zip code 66048

3. State/Federal Agency Certification

As the designated authority under the National Historic Preservation Act of 1986, as amended, I hereby certify that this X nomination request for determination of eligibility meets the documentation standards for registering properties in the National Register of Historic Places and meets the procedural and professional requirements set forth in 36 CFR Part 60.

In my opinion, the property X meets does not meet the National Register criteria.

I recommend that this property be considered significant nationally X statewide locally.

(See continuation sheet for additional comments.)

Reedward S. Parkratz 3/5/02
Signature of certifying official Date

Kansas State Historical Society

State or Federal agency and bureau

In my opinion, the property meets does not meet the National Register criteria.

(See continuation sheet for additional comments.)

Signature of commenting or other official Date

State or Federal agency and bureau

4. National Park Service Certification

I, hereby, certify that this property is:

✓ entered in the National Register *Elson H. Beall* 4/26/02

 See continuation sheet

 determined eligible for the National Register.

 See continuation sheet

 determined not eligible for the National Register.

 removed from the National Register.

 other, (explain:)

per Signature of Keeper Date of Action

Property Name Leavenworth County Courthouse

County and State Leavenworth County, Kansas

5. Classification

Ownership of Property

- private
- public-local
- public-State
- public-Federal

Category of Property

- building(s)
- district
- site
- structure
- object

No. of Resources within Property

contributing	noncontributing
<u>1</u>	<input type="checkbox"/> buildings
<input type="checkbox"/>	<input type="checkbox"/> sites
<input type="checkbox"/>	<input type="checkbox"/> structures
<input type="checkbox"/>	<input type="checkbox"/> objects
<u>1</u>	<u>0</u> Total

Name of related multiple property listing:
Enter "N/A" if property is not part of a
multiple property listing.)

Historic County Courthouses of Kansas

No. of contributing resources previously
listed in the National Register:

0

6. Functions or Use

Historic Functions

(Enter categories from instructions.)

GOVERNMENT: County Courthouse

Current Functions

(Enter categories from instructions.)

GOVERNMENT: County Courthouse

7. Description

Architectural Classification

(Enter categories from instructions.)

LATE 19TH AND EARLY 20TH CENTURY REVIVALS

Classical Revival

Materials

(Enter categories from instructions.)

Foundation STONE: Limestone

Walls STONE: Limestone

Roof OTHER: Composite Material

Other _____

Narrative Description (Describe the historic and current condition of the property on one or more continuation sheets.)

Property Name Leavenworth County Courthouse

County and State Leavenworth County, Kansas

8. Statement of Significance

Applicable National Register Criteria (Mark "x" in one or more boxes for the criteria qualifying the property for National Register listing.)

A Property is associated with events that have made a significant contribution to the broad patterns of our history.

B Property is associated with the lives of persons significant in our past.

C Property embodies the distinctive characteristics of a type, period, or method of construction or represents the work of a master, or possesses high artistic values, or represents a significant and distinguishable entity whose components lack individual distinction.

D Property has yielded, or is likely to yield, information important in prehistory or history.

Criteria Considerations (Mark "x" in all the boxes that apply.)

A owned by a religious institution or used for religious purposes.

B removed from its original location.

C a birthplace or a grave.

D a cemetery.

E a reconstructed building, object, or structure.

F a commemorative property.

G less than 50 years of age or achieved significance within the past 50 years.

Areas of Significance
(Enter categories from instructions.)

Period of Significance

Significant Dates

ARCHITECTURE

1911/1913-1950

N/A

POLITICS/GOVERNMENT

Cultural Affiliation

N/A

Significant Person

Architect/Builder

N/A

William Feth, Architect

J.B. Betts, Contractor

Narrative Statement of Significance (Explain the significance of the property on one or more continuation sheets.)

Property Name Leavenworth County Courthouse

County and State Leavenworth County, Kansas

9. Major Bibliographical References

(Cite the books, articles, and other sources used in preparing this form on one or more continuation sheets.)

Previous documentation on file (NPS):

- preliminary determination of individual listing (36 CFR 67) has been requested
- previously listed in the National Register
- previously determined eligible by the National Register
- designated a National Historic Landmark
- recorded by Historic American Buildings Survey # _____
- recorded by Historic American Engineering

Primary location of additional data:

- State Historic Preservation Office
- Other State agency
- Federal agency
- Local government
- University
- Other

Specify repository:

Library and Archives Division, Kansas
State Historical Society; Topeka, Kansas

Record # _____

10. Geographical Data

Acreage of property <1

UTM References

1	<u>1/5</u>	<u>3/3/5/1/5/0</u>	<u>4/3/5/2/2/0/0</u>	3	<u>/</u>	<u>/ / / / /</u>	<u>/ / / / / /</u>
	Zone	Easting	Northing		Zone	Easting	Northing
2	<u>/</u>	<u>/ / / / /</u>	<u>/ / / / / /</u>	4	<u>/</u>	<u>/ / / / /</u>	<u>/ / / / / /</u>

____ See continuation sheet

Verbal Boundary Description (Describe the boundaries of the property on a continuation sheet.)

Boundary Justification (Explain why the boundaries were selected on a continuation sheet.)

11. Form Prepared By

name/title Dana Cloud and Sally F. Schwenk

organization Historic Preservation Services, LLC date April 30, 2000

street & number 818 Grand Boulevard, Suite 1150 telephone (816) 221-5133

city or town Kansas City state Missouri zip code 64106

Additional Documentation

Submit the following items with the completed form:

Continuation Sheets

Maps

- A USGS map (7.5 or 15 minute series) indicating the property's location.
- A sketch map for historic districts and properties having large acreage or numerous resources.

Photographs

Representative black and white photographs of the property.

Additional items (Check with the SHPO or FPO for any additional items.)

Property Owner (Complete this item at the request of the SHPO or FPO.)

name Leavenworth County

street & number 300 Walnut Street telephone (913) 684-0422

city or town Leavenworth state KS zip code 66048

United States Department of the Interior
National Park Service

**NATIONAL REGISTER OF HISTORIC PLACES
CONTINUATION SHEET**

Section Number 7 Page 1

Historic County Courthouses of Kansas
Leavenworth County Courthouse
Leavenworth, Kansas

DESCRIPTION

The Leavenworth County Courthouse is a Classical Revival style, three-story masonry structure that occupies a full square block that is several blocks south of the Leavenworth, Kansas historic central business district [*Figure 1: City Plan of Leavenworth, Kansas*]. The primary façade faces south onto Walnut Street. The courthouse has a rectangular plan and measures approximately 200 feet wide by 70 feet deep by 70 feet high [*Figure 2: Existing Site Plan*]. On the south side of the courthouse at the primary entrance is a World War I memorial that rests on a rough-cut stone base [*Photograph #3*]. On the northwest side of the courthouse is a small obelisk [*Photograph #2*].¹

The courthouse walls are cut limestone masonry units laid in running bond with a rusticated limestone foundation and limestone quoins. The limestone walls, in some instances, face the soft brick walls that remained after the fire destroyed the earlier 1870s courthouse. Projecting limestone sills define the first- and second-floor windowsills. A restrained cornice and parapet delineate the roofline of the flat roof. Two-story pedimented porticos define the primary entrances on the north and south façades, and one-story porticos with flat roofs define the side entrances on the east and west façades [*Photographs #1 and #2*]. Except for the replacement of window and door units and the reconfiguration of the second floor, the courthouse retains the majority of its original exterior and interior features. Erected in 1911–1913 as a county courthouse, the structure continues to serve as a county courthouse.

Metal-clad windows replace the original, wood window units. Based on photographic evidence, they mimic the original system that included, on the second story, a central, one-over-one light, double-hung sash flanked by narrow, single-pane sidelights with a transom spanning the width of the three windows. An opaque panel covers the transom. On the first story, arched windows repeat the configuration, with a fan light instead of a transom and a central, one-over-one light, double-hung arched window instead of a rectangular unit. Panels cover the fan light. The first-floor windows have restrained semi-circular heads that enrich the projecting stringcourse. Limestone masonry encloses the rectangular ground-floor windows [*Photograph #2*].

The courthouse features an entrance on each façade, with the primary entrance on the south façade. A grand staircase, flanked by torchers, accesses a two-story, pedimented portico with Ionic columns on the south and north façades [*Photograph #4*]. The entablatures of the limestone pediments are inscribed with “Leavenworth County Court House” [*Photograph #5*]. Smaller, one-story, one-bay porticos with flat roofs supported by Tuscan columns define the east and west entrances, which also feature a grand staircase. Metal frame, storefront doors replaced the original entrance doors, and opaque panels enclose the semi-circular door transoms [*Photograph #6*]. The openings are unaltered.

The floor plan and space uses of the Leavenworth County Courthouse are typical of many Kansas courthouses built during the same time period. The distinguishing feature of the courthouse is its central rotunda, which is open to the first and second floors and is crowned with a stained-glass dome [*Photographs #7, #9 and #10*]. A grand staircase at the primary (south) façade of the courthouse serves each floor, which has north-south corridors.

¹ Because of their size and scale, the World War I Memorial and the small obelisk are not counted as resources according to the National Register guidelines.

United States Department of the Interior
National Park Service

**NATIONAL REGISTER OF HISTORIC PLACES
CONTINUATION SHEET**

Section Number 7 Page 2

Historic County Courthouses of Kansas
Leavenworth County Courthouse
Leavenworth, Kansas

The ground floor is partially below grade and accessed by an exterior door at the rear (north) of the building. The first floor, which houses the main offices such as the county clerk and register of deeds, is accessed by each of the four entrances. A recent rehabilitation altered the second-floor courtroom space.

The interior finishes are also typical of many Kansas courthouses built during the same time period. Interior finishes include terrazzo flooring, marble wainscoting, oak doors and trim, plaster walls and ceilings, scagliola columns, and an iron and marble staircase with marble treads. Original light fixtures are also in use throughout the building [*Photographs #7 and #8*].

The World War I memorial sculpture, "The Doughboy," features a bronze World War I infantry soldier, charging with rifle in hand. The sculpture is mounted on a rough-cut limestone pedestal and base. A trapezoid bronze panel fills the center portion of the pedestal's south face and reads, "In Grateful Memory of Our Veterans of All American Wars." A rectangular bronze plaque is directly below on the base.

The Leavenworth County Courthouse retains a high degree of integrity. Alterations include the replacement of wooden window casements and sashes and the original doors. The replacement windows and the window and door openings have not been altered. The remaining character-defining exterior features, such as the masonry, porticos, Ionic and Doric columns, window and door openings, and roofline are intact. Interior features, such as the central rotunda, terrazzo flooring, marble wainscoting, oak doors and trim, plaster walls and ceilings, scagliola columns, and iron staircase are also intact. Except for the reconfiguration of the second-floor courtroom, the floor plan configuration also remains intact. Overall, the Leavenworth County Courthouse is in excellent condition as a result of the care and attention given to the maintenance of the structure by a succession of county commissioners.

United States Department of the Interior
National Park Service

**NATIONAL REGISTER OF HISTORIC PLACES
CONTINUATION SHEET**

Section Number 7 Page 3

Historic County Courthouses of Kansas
Leavenworth County Courthouse
Leavenworth, Kansas

PHOTO LOG **Photographer:** Dana Cloud
 Date of Photographs: January 19, 2000
 Location of Negatives: Kansas State Historical Society
 Cultural Resources Division
 6425 S.W. 6th Avenue
 Topeka, Kansas 66615-1099

Photo #	Subject	Camera Direction
1.	Exterior of Courthouse	Northwest
2.	Exterior of Courthouse	Southeast
3.	Detail of South (Main) Entrance	North
4.	Torchere at South (Main) Entrance	North
5.	Detail of Entablature at South (Main) Entrance	North
6.	Side Entrance, East Façade	West
7.	Interior Rotunda on First Floor	Northwest
8.	Detail of Main Staircase from First to Second Floor	West
9.	Interior Rotunda Balcony at Second Floor	East
10.	Interior Rotunda Skylight	

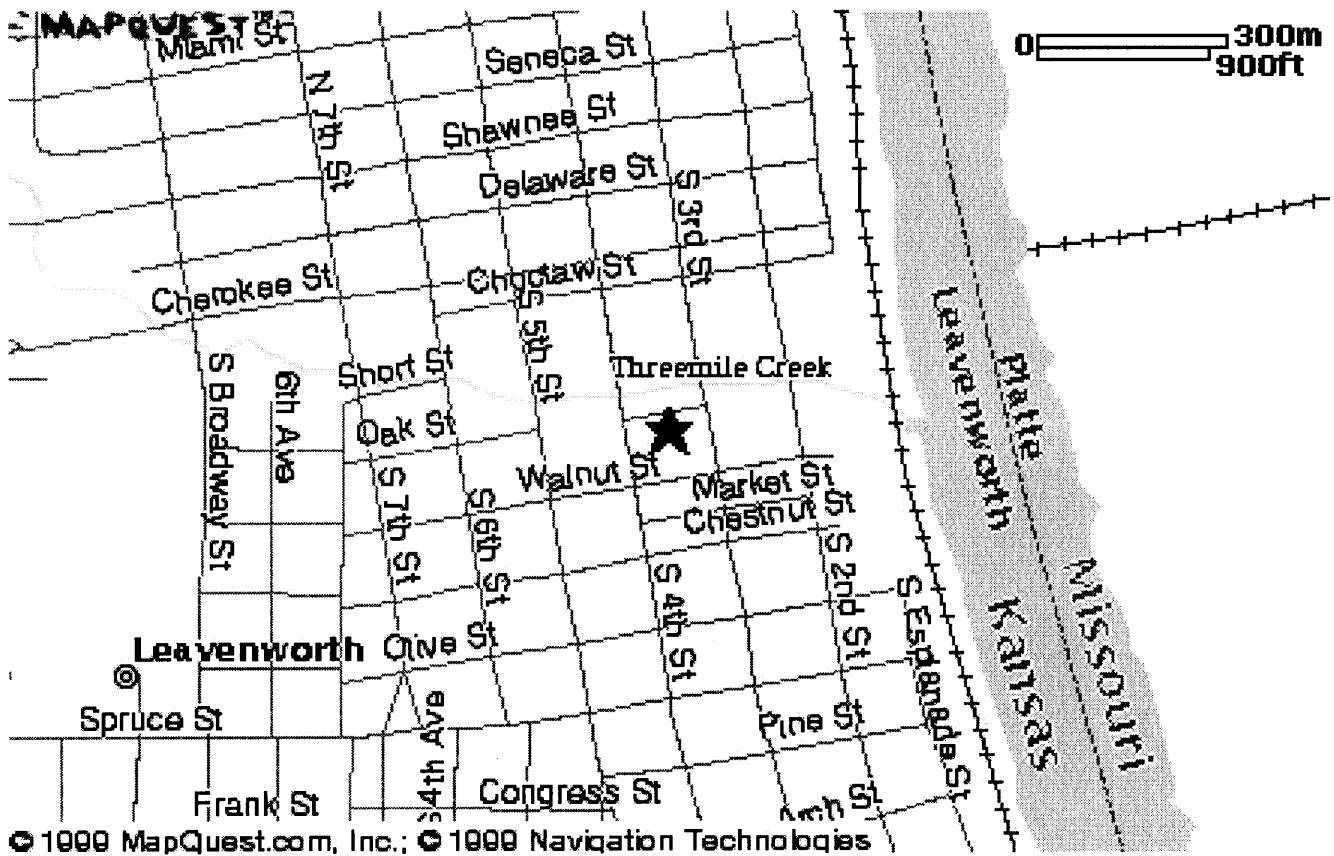
United States Department of the Interior
National Park Service

**NATIONAL REGISTER OF HISTORIC PLACES
CONTINUATION SHEET**

Section Number 7 Page 4

Historic County Courthouses of Kansas
Leavenworth County Courthouse
Leavenworth, Kansas

Figure 1: City Map of Leavenworth, Kansas



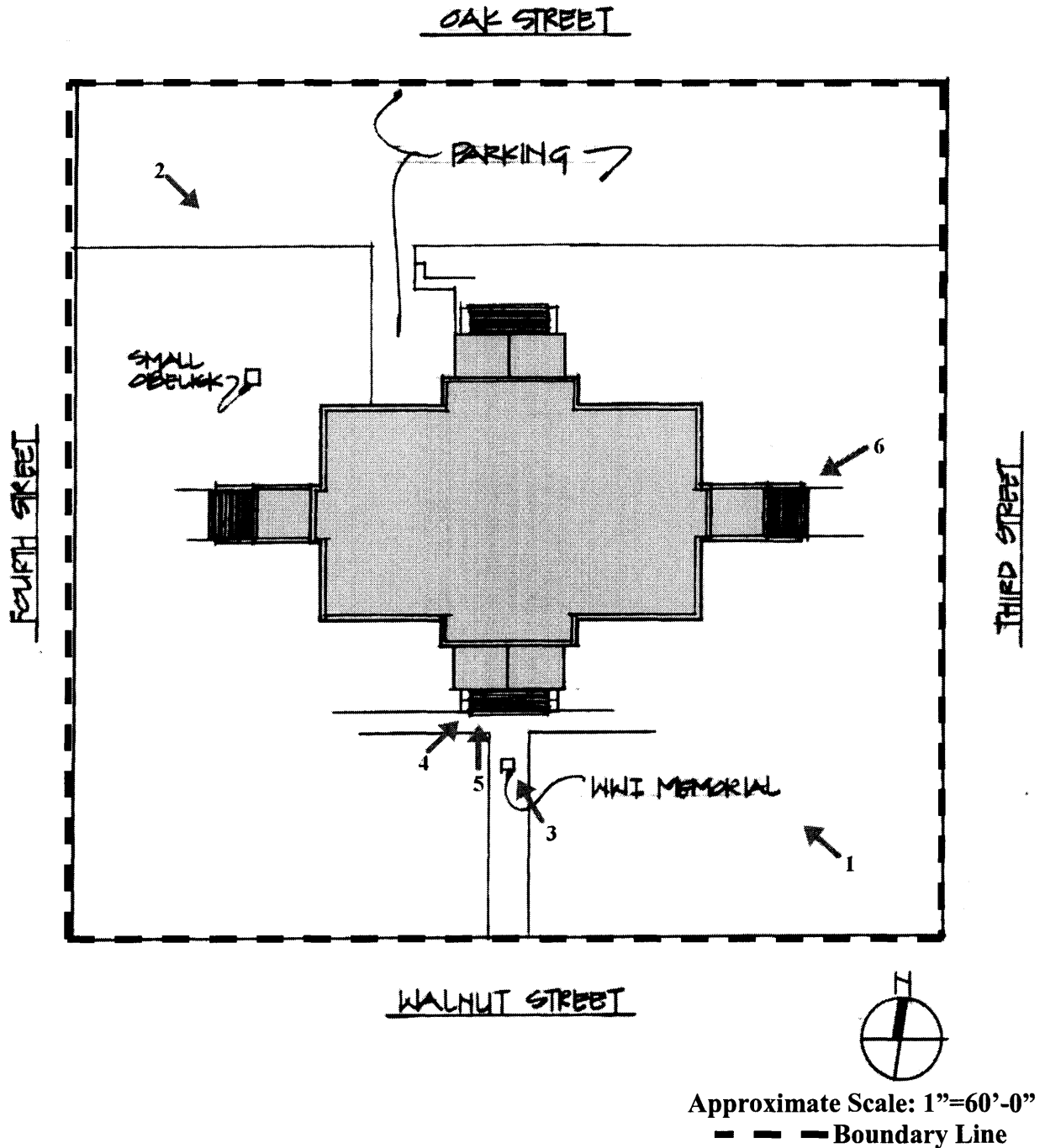
United States Department of the Interior
National Park Service

**NATIONAL REGISTER OF HISTORIC PLACES
CONTINUATION SHEET**

Section Number 7 Page 5

Historic County Courthouses of Kansas
Leavenworth County Courthouse
Leavenworth, Kansas

Figure 2: Existing Site Plan



United States Department of the Interior
National Park Service

**NATIONAL REGISTER OF HISTORIC PLACES
CONTINUATION SHEET**

Section Number 8 Page 6

Historic County Courthouses of Kansas
Leavenworth County Courthouse
Leavenworth, Kansas

STATEMENT OF SIGNIFICANCE

The Leavenworth County Courthouse, erected in 1911–1913, is historically significant under National Register Criterion A in the area of **POLITICS/GOVERNMENT** and under Criterion C in the area of **ARCHITECTURE** for its associations with the development of county courthouses in Kansas and a representative example of the Classical Revival style county courthouse. The historic significance of the Leavenworth County Courthouse is based on its associations with the history and development of Kansas county courthouses that are documented in the Multiple Property Form, “**Historic County Courthouses of Kansas.**” In particular, the property has direct associations to the historic contexts established in the Multiple Property Form—“The Role of the County Courthouse in Kansas Communities 1856–1950,” “Twentieth Century Kansas County Courthouses and Their Changing Use: 1900-1950,” and the “Architecture of Kansas Courthouses 1861–1950.” The property’s association with the evolution of Kansas county courthouses and their design dates to its construction in 1911–1913 and continues to 2000, the arbitrary 50-year cutoff date for determining eligibility of National Register properties. The property reflects typical courthouse plans, siting, and designs found in Kansas during the first decades of the twentieth century. In addition to retention of association and location, it retains a high degree of architectural integrity and is a representative example of its Classical Revival property type. The property type and larger historic contexts relating to the significance of the Leavenworth County Courthouse are fully documented in the Multiple Property Form. The following commentary expands upon these larger contextual themes as they specifically relate to the Leavenworth County Courthouse and documents the property’s significance.

HISTORICAL BACKGROUND AND SIGNIFICANCE:

Leavenworth County is located in northeastern Kansas along the Kansas-Missouri state line, with the Kansas River forming a portion of its southern boundary and the Missouri River forming a portion of its eastern boundary. It has several small towns including Leavenworth, the county seat; and the communities of Springdale, Lansing, Fairmount, Basehor, Tonganoxie, and Linwood. Several state roads and highways, including Interstate Highway 70, run through Leavenworth County. The county’s history begins with the establishment of Fort Leavenworth in 1827; the military installation is in the northeast corner of the county.

In 1855, the first territorial legislature established Leavenworth County, which originally included the area of Wyandotte County.¹ The county takes its name from General Henry Leavenworth, the founder of Fort Leavenworth in 1827. Governor Andrew Reed appointed John A. Halderman, Joseph M. Hall and Matthew R. Walker as the county’s first commissioners. They held their first meeting in September 1855, in a warehouse owned by Lewis H. Rees. At the meeting, the commissioners designated Leavenworth City as the temporary county seat and scheduled an election the next month to determine the permanent county seat.

Typical of the majority of Kansas’ county battles over the location of county seats, Leavenworth County held three elections before securing its role as the county seat. The first election, on October 15, 1855, determined

¹ The territorial legislature separated the area that now comprises Wyandotte County on January 29, 1857.

United States Department of the Interior
National Park Service

**NATIONAL REGISTER OF HISTORIC PLACES
CONTINUATION SHEET**

Section Number 8 Page 7

Historic County Courthouses of Kansas
Leavenworth County Courthouse
Leavenworth, Kansas

Kickapoo as the county seat, with Kickapoo receiving 892 votes; Delaware, 860 votes; and Leavenworth, 753 votes. Delaware appealed the vote, declaring that all of its constituents did not have the chance to vote. As a result, the legislature held a second election. This time Delaware prevailed and, on February 20, 1856, county commissioners moved the county files to Delaware. A third election determined Kickapoo as victorious; however, the state legislature determined that due to election fraud, the county seat would be Leavenworth.²

With the county seat permanently secured, plans commenced to erect a courthouse. On April 22, 1858, Jeremiah Clark donated half of the present Courthouse Square block, and the county commissioners hired architect John Haskell to draw plans for a new courthouse. In 1869, the county purchased the other half of the block from John Halderman for \$9,200. Several years passed before the county erected a permanent courthouse. Prior to this, a building at the northwest corner of Third and Delaware streets and, later the City Hall housed the county records.³ It was not until 1873–1874 that county commissioners completed a three-story, Second Empire style structure of red brick and limestone at a cost of \$120,415.75. Complete with gas, steam heating, vaults and a clock tower, county citizens praised it as one of the most beautiful courthouses in the West [*Figure 3: Original c.1873–1874 Leavenworth County Courthouse*].

The courthouse served the county until March 22, 1911, when a fire broke out due to faulty wiring. The fire gutted the building, leaving behind only the exterior masonry walls.⁴ Immediately following the fire, county commissioners hired architect William P. Feth of Topeka, Kansas to begin rebuilding the courthouse, providing the county an opportunity to update their image with modern courthouse. A newspaper article, dated 1911, reads: “. . . the new court house should be designed along simple, graceful lines, and should have entirely absent any of the ‘gingerbread’ effects. . . .”⁵ The county completed the Classical Revival style courthouse in 1912, building upon the walls and foundation of the previous courthouse, for a cost of \$143,152.54 [*Figure 4: Breakdown of Costs for the Present Leavenworth County Courthouse*].⁶ The contract for furnishing electrical fixtures for the courthouse went to Western Gas Fixtures Company of Toledo, Ohio, represented by Franck M. Ackley and Tholen Brothers. Their bid included installation of tungsten globes and white Alba shades throughout the building.

On August 23, 1941, the county commissioners placed the Doughboy Statue, a World War I memorial statue, on the south lawn at the courthouse’s primary façade. Fabricated in Chicago in 1921, the statue originally stood at “Victory Junction,” where U.S. Highway 40 branches north to form U.S. Highway 73. When the Kansas

² Author Unknown, “Newest Historical Plaque is Located at Courthouse,” *Leavenworth Times* (14 April 1968). Kansas State Historical Society, Cultural Resources Division, Vertical Files.

³ Author Unknown, “Site is Given to Leavenworth for Courthouse,” Newspaper Article (Date Unknown). Kansas State Historical Society, Cultural Resources Division, Vertical Files.

⁴ Author Unknown, “The Leavenworth County Courthouse,” *Woman’s Kansas Day Club* (1948). Kansas State Historical Society, Cultural Resources Division, Vertical Files.

⁵ Author Unknown, “No ‘Gingerbread’ About the Court House, Says Short,” *Daily Times* (17 August 1911). Kansas State Historical Society, Cultural Resources Division, Vertical Files.

⁶ Author Unknown, “Condensed Statement of the Cost of the Leavenworth County Court House,” (1 June 1913). Kansas State Historical Society, Cultural Resources Division, Vertical Files.

United States Department of the Interior
National Park Service

**NATIONAL REGISTER OF HISTORIC PLACES
CONTINUATION SHEET**

Section Number 8 Page 8

Historic County Courthouses of Kansas
Leavenworth County Courthouse
Leavenworth, Kansas

Department of Transportation constructed the extension of Highway 73 south from the junction, the statue was relocated. The county restored the statue in 1984.⁷

The county renovated the courthouse several times throughout the years, beginning with a renovation in 1951. In 1977, the county renovated the majority of the second floor to house the courts at a cost of \$110,000.⁸ A c.1980 renovation added two additional courtrooms to the second floor,⁹ and recent renovations replaced the original windows.

HISTORICAL SIGNIFICANCE

The Leavenworth County Courthouse is significant under Criterion A for its associations with the second and third generation county courthouses that occurred during the first decades of the twentieth century. Although it replaced a structure destroyed by fire, it is part of a wave of new courthouse construction that occurred in the early twentieth century in Kansas to replace aged and obsolete courthouse buildings erected in the state's earlier settlement period. The building and its setting convey distinct associations with the historic appearance of the property. The integrity of the building today conveys its original functions and role in county government in the early twentieth century.

ARCHITECTURAL SIGNIFICANCE

The Leavenworth County Courthouse is architecturally significant as a representative example of the Neo-Classical style governmental buildings that enjoyed great popularity prior to World War I. It is one of a few county courthouses in Kansas to have a "pure," Greek-inspired, Classical Revival treatment that incorporates a projecting pedimented portico supported by classical columns on its primary façades. The courthouse is a three-story, Classical Revival style structure of cut ashlar limestone with a rusticated limestone foundation and quoins. A restrained cornice and parapet conceal the flat roof. Two-story pedimented porticos define the primary entrances on the north and south façades, and one-story porticos with flat roofs define the secondary entrances on the east and west façades. The courthouse has 11 bays on the north and south façades and five bays on the east and west façades. Semi-circular heads define the first-floor windows. Except for the window and door replacements and the infill of the ground-floor (basement) windows, the courthouse retains its defining exterior features and serves as a representative example of its style and time of construction.

The Leavenworth County Courthouse is also architecturally significant for the retention of its original floor plan configuration and hierarchy of space that is typical of the majority of Kansas courthouses erected in the early twentieth century. Kansas courthouses of this period are generally defined by three or four floors, which have a hierarchy of functions that are located off a main corridor and accessed by one or more staircases. The ground floor is either at grade level or slightly sunken and houses the auxiliary functions such as the boiler room, facility manager's offices, toilets, and storage. The finishes of this floor are often not as elaborate as the upper, more public floors. The first floor, which is the most highly utilized floor, is generally elevated from grade level and

⁷ Author Unknown, "Doughboy is on Furlough," Newspaper Article (14 October 1984). Kansas State Historical Society, Cultural Resources Division, Vertical Files.

⁸ Author Unknown, Handwritten Notes. Kansas State Historical Society, Cultural Resources Division, Vertical Files.

⁹ Leavenworth County Clerk, Telephone conversation with author, May 2000.

United States Department of the Interior
National Park Service

**NATIONAL REGISTER OF HISTORIC PLACES
CONTINUATION SHEET**

Section Number 8 Page 9

Historic County Courthouses of Kansas
Leavenworth County Courthouse
Leavenworth, Kansas

approached via an exterior grand staircase. The first floor houses offices frequently utilized by the public such as the county clerk, register of deeds, county treasurer, engineer, appraiser, and county commissioners' offices. The second floor houses the courtroom, judge's office, jury room, and the sheriff and court clerk's offices. The courtroom is nearly always on the opposite side of the primary entrance, just opposite of the central grand staircase, and is 1½ or two stories in height. The second floor of the Leavenworth County Courthouse originally housed two large courtrooms on the east side of the building and a law library.¹⁰ A c.1980 rehabilitation added two courtrooms, one at the southwest corner of the building and the other in the law library. Except for these additions, the courthouse retains its hierarchy of space and floor configurations on the ground and second floors, including the central rotunda that opens to the first and second floors.

¹⁰ The handwritten notes in the vertical files of the Kansas State Historical Society, Cultural Resources Division indicate that the jail was separate from the courthouse. The author cites a *Leavenworth Times* article, dated 14 April 1968.

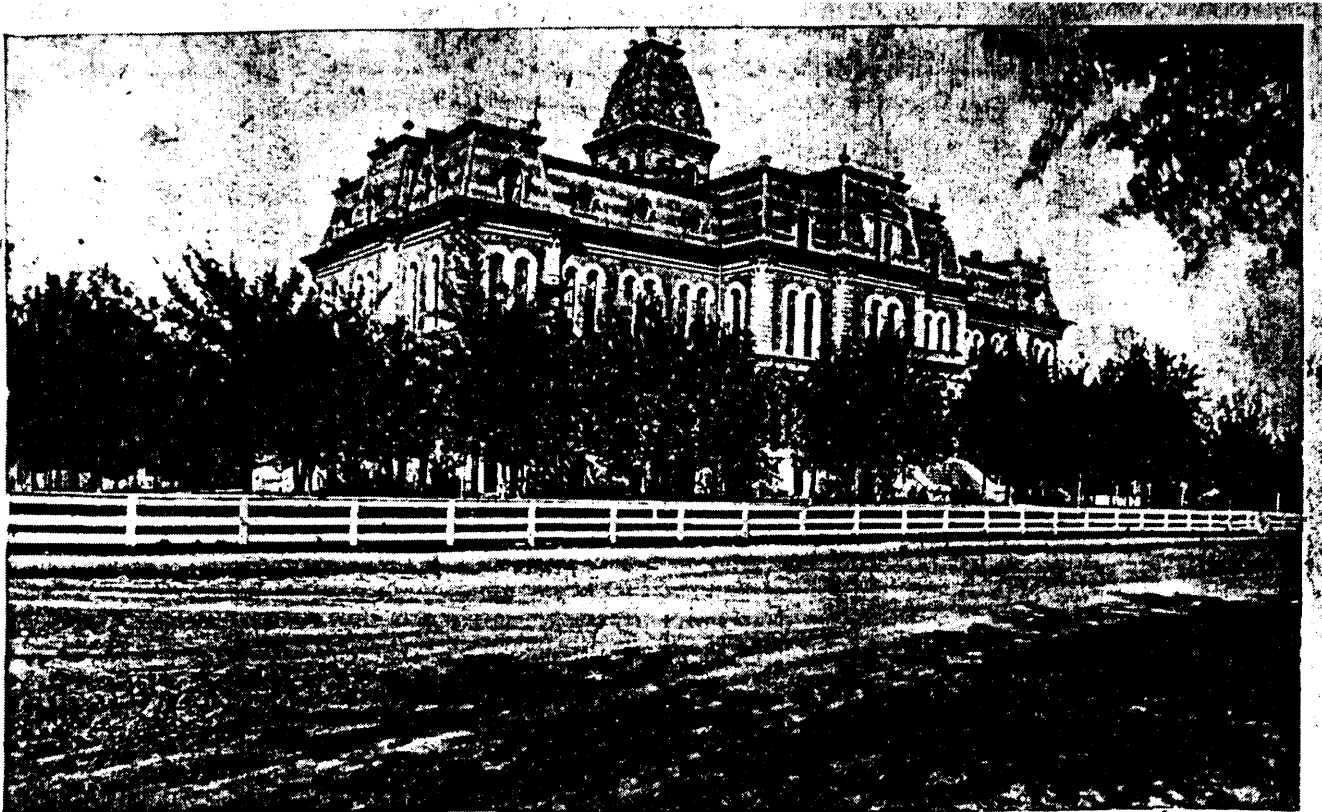
United States Department of the Interior
National Park Service

**NATIONAL REGISTER OF HISTORIC PLACES
CONTINUATION SHEET**

Section Number 8 Page 10

Historic County Courthouses of Kansas
Leavenworth County Courthouse
Leavenworth, Kansas

Figure 3: Original c.1873–1874 Leavenworth County Courthouse



Leavenworth Court House South Side.

United States Department of the Interior
National Park Service

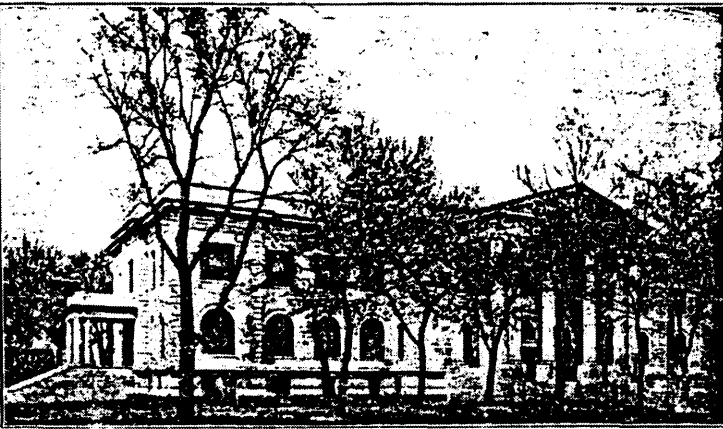
**NATIONAL REGISTER OF HISTORIC PLACES
CONTINUATION SHEET**

Section Number 8 Page 11

Historic County Courthouses of Kansas
Leavenworth County Courthouse
Leavenworth, Kansas

Figure 4: Breakdown of Costs for the Present Leavenworth County Courthouse

COMMISSIONERS: JOHN BOLLIN, CHAIRMAN; H. C. SHORT, S. H. WARD.



LEAVENWORTH COUNTY COURT HOUSE. JUNE 1, 1913

CONDENSED STATEMENT OF THE COST
OF THE
Leavenworth County Court House
JUNE 1ST, 1913

J. B. Betts contract	\$110,915.75	
Tholen Bros., plumbing and heating	10,022.30	
Tholen Bros., electric light fixtures	1,800.00	
C. L. Lord, electric wiring.	1,666.15	
Architect fees	4,756.82	
Wollisager Mfg. Co., furniture	10,516.10	
J. G. Barnes, removing debris	1,668.00	
Inspection of old building	150.00	
F. E. Hines, clerk of works	1,285.00	
McCune, grading grounds and filling	372.42	
Total		\$143,152.54
Insurance received on old building	\$83,000.00	
Interest on insurance money	2,390.00	
		85,390.00
Net cost of building and furniture		\$ 57,762.54

Respectfully submitted,
WM. P. PRYR, Architect.

If you are paying taxes on \$1000 valuation your share of the cost of this splendid building is only \$1.50, and you have three years in which to pay for it. Isn't it worth the price?

United States Department of the Interior
National Park Service

**NATIONAL REGISTER OF HISTORIC PLACES
CONTINUATION SHEET**

Section Number 9, 10 Page 12

Historic County Courthouses of Kansas
Leavenworth County Courthouse
Leavenworth, Kansas

BIBLIOGRAPHY

- Author Unknown. "Newest Historical Plaque is Located at Courthouse." *Leavenworth Times* (April 14, 1968). Kansas State Historical Society, Cultural Resources Division, Vertical Files.
- Author Unknown. "Site is Given to Leavenworth for Courthouse." Newspaper Article (Date Unknown). Kansas State Historical Society, Cultural Resources Division, Vertical Files.
- Author Unknown. "The Leavenworth County Courthouse." *Woman's Kansas Day Club* (1948). Kansas State Historical Society, Cultural Resources Division, Vertical Files.
- Author Unknown. "No 'Gingerbread' About the Court House, Says Short." *Daily Times* (August 17, 1911). Kansas State Historical Society, Cultural Resources Division, Vertical Files.
- Author Unknown. "Condensed Statement of the Cost of the Leavenworth County Court House." (June 1, 1913). Kansas State Historical Society, Cultural Resources Division, Vertical Files.
- Author Unknown. "Doughboy is on Furlough." Newspaper Article (October 14, 1984). Kansas State Historical Society, Cultural Resources Division, Vertical Files.
- Author Unknown, Handwritten Notes. Kansas State Historical Society, Cultural Resources Division, Vertical Files.
- Leavenworth County Clerk, Telephone conversation with author, May 2000.

VERBAL BOUNDARY DESCRIPTION

The boundary of the nominated property includes the entirety of Block 3 in the Clark and Rees Addition in the City of Leavenworth, Leavenworth County, Kansas and is bounded by the following: on the south, the northern boundary of Walnut Street between Third Street and Fourth Street; on the west, the eastern boundary of Fourth Street between Walnut Street and Oak Street; on the north, the southern boundary of Oak Street between Fourth Street and Third Street; and on the east, the western boundary of Third Street between Oak Street and Walnut Street.

VERBAL BOUNDARY JUSTIFICATION

The nominated property includes the entirety of Block 3 for its traditional courthouse function. Walnut Street, Fourth Street, Oak Street, and Third Street provide natural boundaries.