

876

RECEIVED
JUN 13 1992

NPS Form 10-900
(Rev. 8-86)

NATIONAL
REGISTER

OMB No. 1024-0018

United States Department of the Interior
National Park Service

NATIONAL REGISTER OF HISTORIC PLACES
REGISTRATION FORM

=====

1. Name of Property:

=====

historic name: South Bluefield Historic District

other name/site number: na

=====

2. Location: Bluefield, West Virginia

=====

street & number: Along Mountain View, ^{Rd.} Bland Road, Oakhurst, and Parkway.

not for publication: na

city/town: Bluefield

vicinity: na

state: WV

county: Mercer

Code: 55

=====

3. Classification

=====

Ownership of Property: Private

Category of Property: District

Number of Resources within Property:

Contributing	Noncontributing	
84	23	buildings
	_____	sites
	_____	structures
	_____	objects
_____	23	Total
84		

Number of contributing resources previously listed in the National Register: na

Name of related multiple property listing: Historic and Architectural Resources of South Bluefield, West Virginia.

=====
4. State/Federal Agency Certification
=====

As the designated authority under the National Historic Preservation Act of 1986, as amended, I hereby certify that this nomination _____ request for determination of eligibility meets the documentation standards for registering properties in the National Register of Historic Places and meets the procedural and professional requirements set forth in 36 CFR Part 60. In my opinion, the property meets _____ does not meet the National Register Criteria. _____ See continuation sheet.

William Colman
Signature of certifying official

6/1/92
Date

State or Federal agency and bureau

In my opinion, the property _____ meets _____ does not meet the National Register criteria. _____ See continuation sheet.

Signature of commenting or other official

Date

State or Federal agency and bureau

5. National Park Service Certification

I, hereby certify that this property is:

~~Entered in the
National Register~~

- entered in the National Register
 See continuation sheet.
- determined eligible for the
 National Register
 See continuation sheet.
- determined not eligible for the
 National Register
- removed from the National Register
- other (explain): _____

William Dyer 7/29/92

Signature of Keeper Date
of Action

6. Function or Use

Historic: Domestic
Religion

Sub: Single dwelling
Religious structure

Current : Domestic
Religion
Commerce/Trade

Sub: Single dwelling
Religious structure
Professional

7. Description

Architectural Classification:

- Neo Classical Revival
- Colonial Revival
- Four Square
- Mediterranean Revival

Other Description: na

Materials: foundation: brick; block; stone
roof: slate; asbestos; asphalt; metal; tile
walls: brick; stone; stucco; wood

Describe present and historic physical appearance. X See continuation sheet.

=====
8. Statement of Significance
=====

Certifying official has considered the significance of this property in relation to other properties: state.

Applicable National Register Criteria: A, B, C

Criteria Considerations (Exceptions) : na

Areas of Significance: Architecture
Community Planning
Commerce

Period(s) of Significance: 1900 to 1941

Significant Dates : 1915 1908 1923_

Significant Person(s): Alex B. Mahood

Cultural Affiliation: na

Architect/Builder: Architect - Alex B. Mahood
Architects - M.J. Garry & R.A. Sheffey
Builder - E.S. Pedigo

State significance of property, and justify criteria, criteria considerations, and areas and periods of significance noted above.
X See continuation sheet.

=====
9. Major Bibliographical References
=====

X See continuation sheet.

Previous documentation on file (NPS):

na_ preliminary determination of individual listing (36 CFR 67)
has been requested.

na_ previously listed in the National Register

na_ previously determined eligible by the National Register

na_ designated a National Historic Landmark

na_ recorded by Historic American Buildings Survey # _____

na_ recorded by Historic American Engineering Record # _____

Primary Location of Additional Data:

X State historic preservation office

_ Other state agency

_ Federal agency

X Local government

_ University

Other -- Specify Repository: _____

=====

10. Geographical Data

=====

Acreage of Property: 33.37 acres

UTM References: Zone Easting Northing Zone Easting Northing

A	17.	480960.	4123540.	B	17.	481000.	4123480.
C	17.	481190.	4123560.	D	17.	481230.	4123480.
E	17.	481080.	4123410.	F	17.	481140.	4123290.
G	17.	480670.	4123080.	H	17.	480640.	4123260.

 na See continuation sheet.

Verbal Boundary Description: X See continuation sheet.

Boundary Justification: X See continuation sheet.

=====

11. Form Prepared By

=====

Name/Title: Michael Gioulis

Organization: N/A

Date: Dec. 1, 1991

Street & Number: 612 Main Street Telephone:(304) 765-5716

City or Town: Sutton

State: WV ZIP: 26601

NPS Form 10-900-a
(8-86)

OMB Approval No. 1024-0018

United States Department of the Interior
National Park Service

NATIONAL REGISTER OF HISTORIC PLACES
CONTINUATION SHEET

Section number 7 (South Bluefield Historic District) Page #1
=====

The South Bluefield Historic District is located in the southern portion of Bluefield, Mercer County, West Virginia. It begins at the rise in Bland Road at the intersection of College and Bland. This was the dividing point separating this area from the downtown prior to development. It follows Bland Road as it snakes towards Cumberland Road for two blocks, and follows the perpendicular streets of Mountain View, Oakhurst and Parkway, a short distance each to the east. Included in this area are sections of Lake Street and Spring Grove Avenue. These are connected to this development period through the buildings, which are of the same time period and architectural styles and designed by Mahood as well. They also fit geographically into the South Bluefield section as they are within the plain of the area, and are separated from the other sections of Bluefield by the hill.

Most of the buildings in the area fit into the 1930 to 1940 period of development of Bluefield. They are large single family houses with broad lawns, landscaped entrances and yards. They represent mostly the revival styles of the period with many in the Colonial Revival Style and the Neo Classical Style. Closer downtown the Four Square style is represented as well. Towards the east edge and along Parkway there are a number of Colonial Revival- Style houses, and a number of the larger Neo Classical-Style houses.

Closer to downtown along Oakhurst and Parkway the integrity of the period of development is well maintained. There are few intrusions, newer structures and modifications. As one moves from the downtown there are larger numbers of newer ca. 1950 residences interspersed in the area.

Alex Mahood is well represented in this neighborhood. His commissions include:

2009 Bland Rd., no. 207
109 Spring Grove Ave., no. 142
205 Oakhurst Ave.M258
2301 Bland Rd. M176
2306 Bland Rd. M183
101 Spring grove, no. 143

NPS Form 10-900-a
(8-86)

OMB Approval No. 1024-0018

United States Department of the Interior
National Park Service

NATIONAL REGISTER OF HISTORIC PLACES
CONTINUATION SHEET

Section number 7 (South Bluefield Historic District) Page #2
=====

109 Oakhurst M160
105 Oakhurst M161
2305 Bland Rd. M177
2315 Bland Rd. M179

As can be seen from the list there is quite an impressive collection of Alex Mahood architecture in South Bluefield.

The majority of his work is in the Revival Style of architecture that he usually employed.

205 Oakhurst (M158) is an example of Mahood's Neo Classical-Style residences. It contains a large flat-roofed portico with a wide entablature supported by Doric columns. The Pedigo House, 105 Oakhurst (M161) was designed by Mahood and constructed by E.S. Pedigo. Pedigo was a prominent contractor who constructed many of the homes in the area. It is in the Mediterranean Revival style. Mahood's own home, 2306 Bland Rd. (M183), is an understated Mediterranean Revival with simple detailing and stucco siding. One of the more interesting aspects of the house is the molded frieze band with bas relief.

His greatest work in Bluefield is the Garrett Home on 109 Spring Grove Ave. (142). This is large Neo Classical Revival Style house with an oversized curved portico in the center of the front facade flanked by lower porch wings. The portico is bracketed and has a paneled balustrade. There are Palladian windows in the gable ends and arched windows in the dormers. The interior is elegantly simple and follows the period style of the house.

Another prominent architectural firm in the Bluefield vicinity was the firm of M.J. Garry and R.A. Sheffey. This firm is identified predominantly in the 1923 article on Bluefield as being associated with a number of residential commissions in the vicinity. Their work identified in this project includes:

325 Oakhurst (M151), a large two-story Colonial Revival with a flat-roofed colonnaded portico with Roman grille balustrade.
117 Oakhurst, (M159). This is also associated with Pedigo as the contractor. It is a very large Four Square style brick building

NPS Form 10-900-a
(8-86)

OMB Approval No. 1024-0018

United States Department of the Interior
National Park Service

NATIONAL REGISTER OF HISTORIC PLACES
CONTINUATION SHEET

Section number 7 (South Bluefield Historic District) Page #3
=====

with a wraparound porch and interesting brick detailing on the chimneys. The interior is finely detailed in hardwoods. 116 Lake St. (137), a one- and- one- half story, brick Colonial Revival was built in 1923 for Jesse W. Waters, a local watchmaker and successful businessman.

There are a number of other styles represented in the area. One of the more prominent is the Spanish or Mediterranean Revival Style. Many of the Four Square residences are embellished with detailing of these styles. Elements of the styles that are evident include shallow pitched roofs with tile roofing; broad overhangs on the eaves; projecting pavilion entrances; single story side wings with porches on the roofs; stucco siding; wrought iron balconies; and arched openings or arcaded walls. Much of this style of structure was also designed by Alex Mahood. 1430 Whitethorn, is one of the best examples of this style. It is a large Spanish Revival mansion in blond brick with a red tile roof. The Pedigo House is also in the Mediterranean Revival style. Mahood's own home, as well, 2306 Bland Road, is an understated Mediterranean Revival with simple detailing and stucco siding.

The Colonial Revival Style represented in this district is more similar to a Georgian Revival Style than the Colonial Revival Style of the other sections of Bluefield. Here, they are usually similar to the four square type footprint with symmetrical detailing and massing. Many times there are single story side wings on two story houses. Many have hip roofs and entrance porticoes or hoods.

One of the more unique houses is site no. M108, 230 Parkway, the Gage Residence. This is an older Queen Anne farmhouse, ca. 1900 that was moved for the construction of an adjacent residence in 1932. The house is a two- story side gable with a corner square turret with a steep pointed roof. There is also a cupola on the front roof. There is a wraparound porch.

All of the houses are on generous lots with landscaped lawns and rear yards. The streets are tree lined and it is a very suburban setting in the 1920's Green Acres type of urban development. In

NPS Form 10-900-a
(8-86)

OMB Approval No. 1024-0018

United States Department of the Interior
National Park Service

NATIONAL REGISTER OF HISTORIC PLACES
CONTINUATION SHEET

Section number 7 (South Bluefield Historic District) Page #4
=====

all there is cohesiveness of architecture in the district that is unusual in many locales in West Virginia. There are few intrusions, these being mainly single family residences, later in construction. There are 107 buildings in the district. 84 are contributing; 23 are non-contributing. A list of all sites follows:

- 205) 2008 Bland - Modern office building. Non-contributing.
- 206) 1900 Bland - Two story, brick, Four Square with leaded glass windows.1912. Criteria A/C. Contributing.
- 207) 2009 Bland - Two story, brick, Neo Classical with loggia level.1916. Criteria A/B/C. Contributing. Garage; contributing.
- M106) 216 Parkway - Two story, brick with red tile roof.Mediterranean Revival. ca. 1932. Criteria A/C. Contributing.
- M107) 226 Parkway - Two story, brick, Colonial Revival.ca. 1930. Criteria A. Contributing.
- M108) 230 Parkway - Two story, Queen Anne with drop beaded siding.ca. 1900. Criteria A/C. Contributing. Garage; contributing.
- M151) 325 Oakhurst - Two story, red brick, Colonial Revival with two story porch.1950. Non contributing.
- M152) 315 Oakhurst - Two story, red brick veneer, Colonial Revival.ca. 1912. Criteria A. Contributing. Garage; contributing.
- M153) 307 Oakhurst - Two story, wood sided, Colonial Revival.ca. 1912. Criteria A. Contributing. Garage; contributing.
- M154) 305 Oakhurst - Two story, wood sided, Four Square.ca. 1926. Criteria A. Contributing. Garage; contributing.
- M155) 301 Oakhurst - Two story, red brick, Colonial Revival.ca. 1930. Criteria A. Contributing. Garage; contributing.
- M156) 221 Oakhurst - Two story, red brick, Four Square.ca. 1910. Criteria A/C. Contributing. Garage; contributing.
- M157) 215 Oakhurst - Two story, red brick, Bungalow.ca. 1925. Criteria A/C. Contributing. Garage; contributing.
- M158) 205 Oakhurst - Large, two story, red brick, Neo Classical. 1923. Criteria A/C. Contributing. Garage; contributing.
- M159) 117 Oakhurst - Large, two story, red brick, Four Square.1908. Criteria A/B/C. Contributing. Garage; contributing.
- M160) 109 Oakhurst - Two story, red brick, Colonial Revival.1915. Criteria A/B/C. Contributing. Garage; contributing.
- M161) 105 Oakhurst - Two story, stucco, Mediterranean Revival.1926. Criteria A/B/C. Contributing. Garage; contributing.

NPS Form 10-900-a
(8-86)

OMB Approval No. 1024-0018

United States Department of the Interior
National Park Service

NATIONAL REGISTER OF HISTORIC PLACES
CONTINUATION SHEET

Section number 7 (South Bluefield Historic District) Page #5
=====

- M162) Oakhurst/Bland - Modern church. Non contributing.
M163) 108 Oakhurst - Large, two story, painted brick, Neo Classical. ca. 1915. Criteria A/C. Contributing. Garage; contributing.
M164) 112 Oakhurst - Two story, vinyl sided, Bungalow.ca. 1925. Criteria A. Contributing. Garage; contributing.
M165) 116 Oakhurst - Two story, stucco, Mediterranean Revival. ca. 1920. Criteria A. Contributing. Garage; contributing.
M166) 202 Oakhurst - Two story, red brick, Four Square.ca. 1915. Criteria A. Contributing. Garage; contributing.
M167) 204 Oakhurst - Two story, red brick, Four Square with Colonial Revival detailing.ca. 1915. Criteria A. Contributing. Garage; contributing.
M168) 210 Oakhurst - Two story, blonde brick with red tile roof. Mediterranean Revival. ca. 1925. Criteria A/B/C. Contributing. Garage; contributing.
M169) 216 Oakhurst - Two story, red brick, Four Square.ca. 1925. Criteria A. Contributing. Garage and shed; contributing.
M121) 227 Parkway - Non-contributing.
M122) 225 Parkway - Non-contributing.
M123) 221 Parkway - Highly modified. Two story, Colonial Revival. ca. 1935. Criteria A. Non-contributing. Garage; non-contributing.
M124) 219 Parkway - Highly modified. Non-contributing. Garage; non-contributing.
M125) 215 Parkway - Two story, brick, Bungalow with swaled roof edge.ca. 1920. Criteria A. Contributing.
M126) 211 Parkway - Two story, brick/stucco, Bungalow with swaled porch roof.ca. 1930. Criteria A/C. Contributing.
M127) 201 Parkway - Two story, brick, Four Square.ca. 1926. Criteria A. Contributing.
M176) 2301 Bland - Two story, stucco with red tile roof. Modified Tudor Revival. 1920. Criteria A/B/C. Contributing. Garage; contributing.
M177) 2305 Bland - Two story, red brick, Italianate Renaissance Revival. 1922. Criteria A/B/C. Contributing. Garage; contributing.
M178) 2319 Bland - One and one half story, red brick, Bungalow.ca. 1930. Criteria A. Contributing. Garage; contributing.
M179) 2315 Bland - Two story, red brick, Four Square.1914. Crite-

NPS Form 10-900-a
(8-86)

OMB Approval No. 1024-0018

United States Department of the Interior
National Park Service

NATIONAL REGISTER OF HISTORIC PLACES
CONTINUATION SHEET

Section number 7 (South Bluefield Historic District) Page #6
=====

- ria A/B. Contributing. Garage; contributing.
M180) 2300 Bland - Two story, red brick, Four Square.ca. 1915.
Criteria A. Contributing. Garage; contributing.
M181) Skipped this number.
M182) 2302 Bland - Two story, red brick, Colonial Revival. ca.
1915. Criteria A/C. Contributing. Garage; contributing.
M183) 2306 Bland - Two story, stucco, Med./Ren. Revival.1915.
Criteria A/B/C. Contributing. Garage; contributing.
M184) 2310 Bland - Two story, stucco, Prairie/Four Square.ca.
1915. Criteria A/C. Contributing. Garage; contributing.
M184A) 2400 Bland - Modern. Non contributing.
M255) 245 Mountain View - Two story, stucco. Vernacular. ca.
1915. Criteria A. Contributing.
M256) 241 Mountain View - Two story, aluminum sided, Four
Square.ca. 1920. Criteria A. Non contributing. Garage; non-
contributing.
M257) 235 Mountain View - One story, stucco and brick. Bungalow.
ca. 1940. Criteria A. Contributing.
M258) 225 Mountain View - One and one half story, red brick.Tudor
Revival. 1937. Criteria A. Contributing.
M259) 221 Mountain View - Two story, red brick, Four Square.ca.
1925. Criteria A/C. Contributing. Garage; contributing.
M260) 211 Mountain View - Two story, red brick, Colonial
Revival.1936. Criteria A/C. Contributing.
M261) 205 Mountain View - Simple, two story, brick Four
Square/Colonial Revival. ca. 1925. Criteria A/C. Contributing.
Garage; contributing.
M262) 137 Mountain View - Non contributing.
M263) 133 Mountain View - Two story, red brick, Four Square.ca.
1925. Criteria A/C. Contributing. Garage; contributing.
M264) 129 Mountain View - Two story, brick. Bungalow. ca. 1925.
Criteria A/C. Contributing. Garage; contributing.
M265) 109 Mountain View - Rambling two story, totally sided with
aluminum. Vernacular. 1931. Criteria A. Non contributing.
M266) 140 Mountain View - Modern. Non contributing. Garage; non-
contributing.
M267) 212 Mountain View - Modern. Non contributing.
M268) 214 Mountain View - Non contributing.
M269) 226 Mountain View - Simple, two story, red brick, Four
Square.ca. 1925. Criteria A/C. Contributing.

NPS Form 10-900-a
(8-86)

OMB Approval No. 1024-0018

United States Department of the Interior
National Park Service

NATIONAL REGISTER OF HISTORIC PLACES
CONTINUATION SHEET

Section number 7 (South Bluefield Historic District) Page #7
=====

- M270) 234 Mountain View - Non contributing.
- M271) 236 Mountain View - Non contributing.
- M272) 240 Mountain View - Two story, stucco, Tudor Revival.ca.
1940. Criteria A. Contributing.
- M273) 242 Mountain View - One and one half story, brick/stucco,
Tudor Revival.ca. 1940. Criteria A. Contributing.

NPS Form 10-900-a
(8-86)

OMB Approval No. 1024-0018

United States Department of the Interior
National Park Service

NATIONAL REGISTER OF HISTORIC PLACES
CONTINUATION SHEET

Section number 8 (South Bluefield Historic District) Page #1
=====

The South Bluefield Historic District is significant under Criterion C for its association with major architectural styles of the early 20th Century, namely the Neo Classical, Colonial Revival, Mediterranean Revival, Four Square and other Styles. The area is also significant under Criterion C for its association with noted West Virginia architect Alex Mahood, who designed many of the structures in the district. The district is also significant under Criterion A for its association with the development of the area and Bluefield itself. It reflects the 1920 era boom in Bluefield's economy through its representation of a major wealthy residential neighborhood and its association with the coal wealth of the area in the boom period.

Under Criterion B it is significant for its association with architect Alex B. Mahood as the site of his residence.

This residential section represents the later post Depression development of Bluefield. It is this neighborhood that is described in the 1939 Semi-Centennial newspaper article as the neighborhood of preference. The cover page of the residential section pictures many of the homes in this area. It is also here that many of the West Virginia Cole Realty Corporation stockholders built their mansions when they had the money. Consequently, it is also the largest concentration of Alex Mahood designed homes in the town. This would probably make it the largest concentration of Mahood buildings in the state.

The resources in the district are significant as representatives of major architectural styles of the time. These are mainly the Colonial Revival, Neo Classical Revival, Mediterranean Revival, Four Square and Bungalow.

Associated with this district is the work of Alex Mahood. Alex B. Mahood, architect, contributed immensely to Bluefield's development. Mr. Mahood was a noted West Virginia architect. He designed many of the public and private structures in the city and his list of commissions is staggering. He was born in Lynchburg, Virginia, in 1888 and studied at the Ecole Des Beaux Arts in Paris. This is where many of the turn-of-the-century American

NPS Form 10-900-a
(8-86)

OMB Approval No. 1024-0018

United States Department of the Interior
National Park Service

NATIONAL REGISTER OF HISTORIC PLACES
CONTINUATION SHEET

Section number 8 (South Bluefield Historic District) Page #2
=====

architects learned of the Renaissance Revival and Classical Revival styles prevalent in Europe at the time.

Charles F. McKim of McKim Mead and White in Chicago, is perhaps the most famous of the American architects who brought home the European styles, but many others contributed to the proliferation. Mahood is representative of this group. The presence of a professional of this caliber, concentrating his talents in Bluefield and southern West Virginia, is amazing. His influence is seen in many contemporary buildings throughout the state. His prowess is evident on the designs and details of his commissions.

Mahood came to Bluefield in 1912 and set up business. He was the architect for the West Virginia Hotel and for many of the projects in which the Cole Realty stockholders participated. In fact, most of his residential commissions are from stockholders and officers of the board. Many of his major residential works are in the South Bluefield area.

In other portions of the state, his commissions were also impressive. These include the Women's Dormitory at the West Virginia University in Morgantown, United States Steel Building in Gary, Skyway Drive-In Theater in Brush Fork, the Deco-Style Mercer County Courthouse in Princeton and the Guyan Theater in Logan, as well as a number of coal company offices and stores in the southern West Virginia region. Sites in this district associated with Mahood are:

2009 Bland Rd., no. 207
109 Spring Grove Ave., no. 142
205 Oakhurst Ave. M258
2301 Bland Rd. M176
2306 Bland Rd. M183
101 Spring grove, no. 143
109 Oakhurst M160
105 Oakhurst M161
2305 Bland Rd. M177
2315 Bland Rd. M179

Mahoods own residence, M183 and that of his mother, Kathleen,

NPS Form 10-900-a
(8-86)

OMB Approval No. 1024-0018

United States Department of the Interior
National Park Service

NATIONAL REGISTER OF HISTORIC PLACES
CONTINUATION SHEET

Section number 8 (South Bluefield Historic District) Page #3
=====

M147, 506 Oakhurst are also in the district.

Also associated with the district is the architectural firm of M.J. Garry and R.A. Scheffey. This firm is identified predominantly in a 1923 newspaper article on Bluefield as being associated with a number of residential commissions in the vicinity.

Most of the buildings represented in the South Bluefield area are of the Colonial Revival style.

Under Criterion A the district is significant for its association with the development of Bluefield in general as an indicator of the building boom and expansion of the city in the 20th century. By 1900 Bluefield's population had risen to 4,644. The first decade of the century was one of rapid growth for Bluefield. Street paving went forward rapidly, as well as the establishment of trolley lines. A second City Charter was adopted in 1905 along with an expansion of the corporation limits. The Pocahontas Consolidated Coal Company was established in 1908 and the profits of the Norfolk and Western Railroad continued to climb. By the time of the 1910 census, Bluefield had acquired a population of 11,188, almost tripling in only ten years. It was this time period that saw the beginning of development of one of the survey areas. The Jefferson Avenue and Albermarle Avenue section was incorporated as the Oakland Addition in 1910.

The second decade of the twentieth century saw growth of the city, although at a somewhat less frantic rate than at the beginning of the century. By 1920 the population stood at 15,292.

Bluefield's new City Hall, a monumental piece of Classical Revival architecture designed by prominent architect Wilbur T. Mills, was constructed as part of an \$850,000. bond issue passed in 1923. By 1930, the population of Bluefield had reached 19,339, greater than it's present population.

The 1920's period saw one of the greatest booms in residential development in Bluefield. This was centered in the South Bluefield area. The 1923 West Virginia Realtor magazine, January

NPS Form 10-900-a
(8-86)

OMB Approval No. 1024-0018

United States Department of the Interior
National Park Service

NATIONAL REGISTER OF HISTORIC PLACES
CONTINUATION SHEET

Section number 8 (South Bluefield Historic District) Page #4
=====

issue, rated Bluefield as the 7th largest city in the state. They state that the assessed valuation of properties in Bluefield in 1923 was \$23,329,282.00 and that 402 building permits were issued for new construction in 1922 and 314 in 1921. This represents a major percentage of structures in town.

The second residential boom followed late in the Depression. Bluefield managed to hold its own through these years, despite the general economic slump. The Writers Works Project describes this period as one of intense activity with considerable development and construction. This included a new sewage disposal plant and new residential sections added to the city in 1937-38. This was the South Bluefield area. An ambitious street improvement program began in 1938. Here, according to the 1939 Semi-Centennial issue of the Bluefield Daily Telegraph, over 200 residences were constructed between 1934 and 1935. 50 were underway in 1939 alone in this residential section of the city.

Many of the residents of these grand homes were the bank presidents, architects, mine operators and owners, contractors, merchants, etc. who shaped the destiny of Bluefield. They were the "movers and shakers." They also were connected through the West Virginia Cole Realty Corporation in the development of downtown Bluefield and the West Virginia Hotel. Through the vision and cumulative importance of these prominent residents the face of South Bluefield was changed forever. Many of the prominent residences are those of stockholders and officers in the company.

Some of the more prominent persons in the district include Dr. Wade St. Clair and Dr. Francke Fox, site M168. Dr. Fox came to Bluefield in 1892 as a surgeon for the N&W Railroad. He began the Bluefield Sanitarium with Dr. St. Clair in 1921. It was one of the first private institutions in Bluefield. Dr. St. Clair had site 207 constructed for him in 1916. Dr. St. Clair was born in Virginia in 1877 and graduated from the University of Virginia in 1900. He relocated to Bluefield after spending his internship in New York City as a surgeon.

The Feuchtenberger Family is associated with site 142. They built and operated the Feuchtenberger Bakery in Bluefield for many

NPS Form 10-900-a
(8-86)

OMB Approval No. 1024-0018

United States Department of the Interior
National Park Service

NATIONAL REGISTER OF HISTORIC PLACES
CONTINUATION SHEET

Section number 8 (South Bluefield Historic District) Page #5
=====

years. The bakery's name was changed during WWII to Betsy Ross Bakeries, it is said, due to the sentiment against Germans in this country. The bakery later became a successful regional distributor.

Others associated with the development of Bluefield and the region include:

Judge Joseph Sanders is associated with site M159 which was also constructed by Pedigo.

Edward Taylor Tyree, M179, was president of the Flat Top National Bank in 1923.

Dr. Joseph Hoge, M176, founded the Bluefield Produce Co. in 1904. He was also a physician.

W.S. Phelps, M177, founded the Phelps Furniture Co. in 1909.

All of these prominent persons combined contribute to the significance of the district under Criterion A as an example of the development of the area and the pattern of development of the region.

The one prominent person residing in the district who lends significance under Criterion B is Alex Mahood, whose residence was at 2306 Bland Road, M183.

NPS Form 10-900-a OMB Approval No. 1024-0018
(8-86)

United States Department of the Interior
National Park Service

NATIONAL REGISTER OF HISTORIC PLACES
CONTINUATION SHEET

Section number 9 (South Bluefield Historic District) Page # 1
=====

BIBLIOGRAPHY

Bluefield Daily Telegraph, Semi-Centennial Anniversary issue,
1939

City of Bluefield, Building permit Applications 1910-1940

City of Bluefield, City Clerk Records

Comstock, Jim, Ed. West Virginia Heritage Encyclopedia. Richwood,
WV, 1976

Conley, Phil, ed. West Virginia Encyclopedia. WV Publishing
Company, Charleston, 1929.

History of West Virginia Old and New: and West Virginia Biogra-
phy. Special Staff of Writers, American Historical Society, Inc,
Chicago, 1923

Mahood Collection, Eastern Regional Coal Archives, Bluefield, WV.

McCormick, Kyle. The Story of Mercer County. Charleston, 1957

Pennington, Sam R. Feature Stories Magazine, Vol II No. 2, Nov.
1933

Polk, City Directory of Bluefield, miscellaneous years.

West Virginia Realtor, Vol. 2, January 1923, No. 3

West Virginia: A Guide to the Mountain State, compiled by workers
of the Writer's Program of the Works Progress Administration in
the State of West Virginia, 1941

West Virginia Hillbilly, April 11, 1991.

Whiffen, Marcus and Frederick Koeper. American Architecture:
Volume 2, 1860-1976, MIT Press, 1983.

NPS Form 10-900-a OMB Approval No. 1024-0018
(8-86)

United States Department of the Interior
National Park Service

NATIONAL REGISTER OF HISTORIC PLACES
CONTINUATION SHEET

Section number 10 (South Bluefield Historic District) Page # 1
=====

Verbal Boundary Description:

See attached sketch map dated Nov.1991, M. Gioulis. Beginning at the northwest corner of site no. M265; thence running east along the rear lot lines to the north east corner of site no. M255 approximately 850 feet; thence south along the east lot line of M255, M275 and M158 to the north west corner of site no. M157, approximately 430 feet; thence east along the rear lot lines to the intersection with Hillside Drive, approximately 700 feet; thence south along the west side of Hillside Drive past the intersection with Parkway Avenue, along the east line of site M108 to the south east corner, approximately 650 feet; thence west along the rear lot lines, crossing Bland Road to the south west corner of site 141, approximately 1300 feet; thence north to the north west corner of site 140, approximately 250 feet; thence east to the north east corner of site 138, approximately 300 feet; thence north to the south west corner of site 206, approximately 250 feet; thence north across Bland Road to the intersection with Mountain View Avenue, approximately 500 feet; thence east along Mountain View Avenue to the south west corner of site M265, approximately 360 feet; thence north along the lot line to the point of origin, approximately 160 feet.

Boundary Justification:

The boundaries encompass the residential sites that contribute to the period of significance and the historic qualities of the district. On the south and west boundaries the terrain rises into a small hill that separates South Bluefield from the downtown section. This forms a natural boundary. On the north the properties on the north side of Mountain View also have a hillside to the back which forms another natural boundary. The eastern boundaries are all defined by concentration of later non-significant residential structures, mostly dating from the 1950's and 1960's.

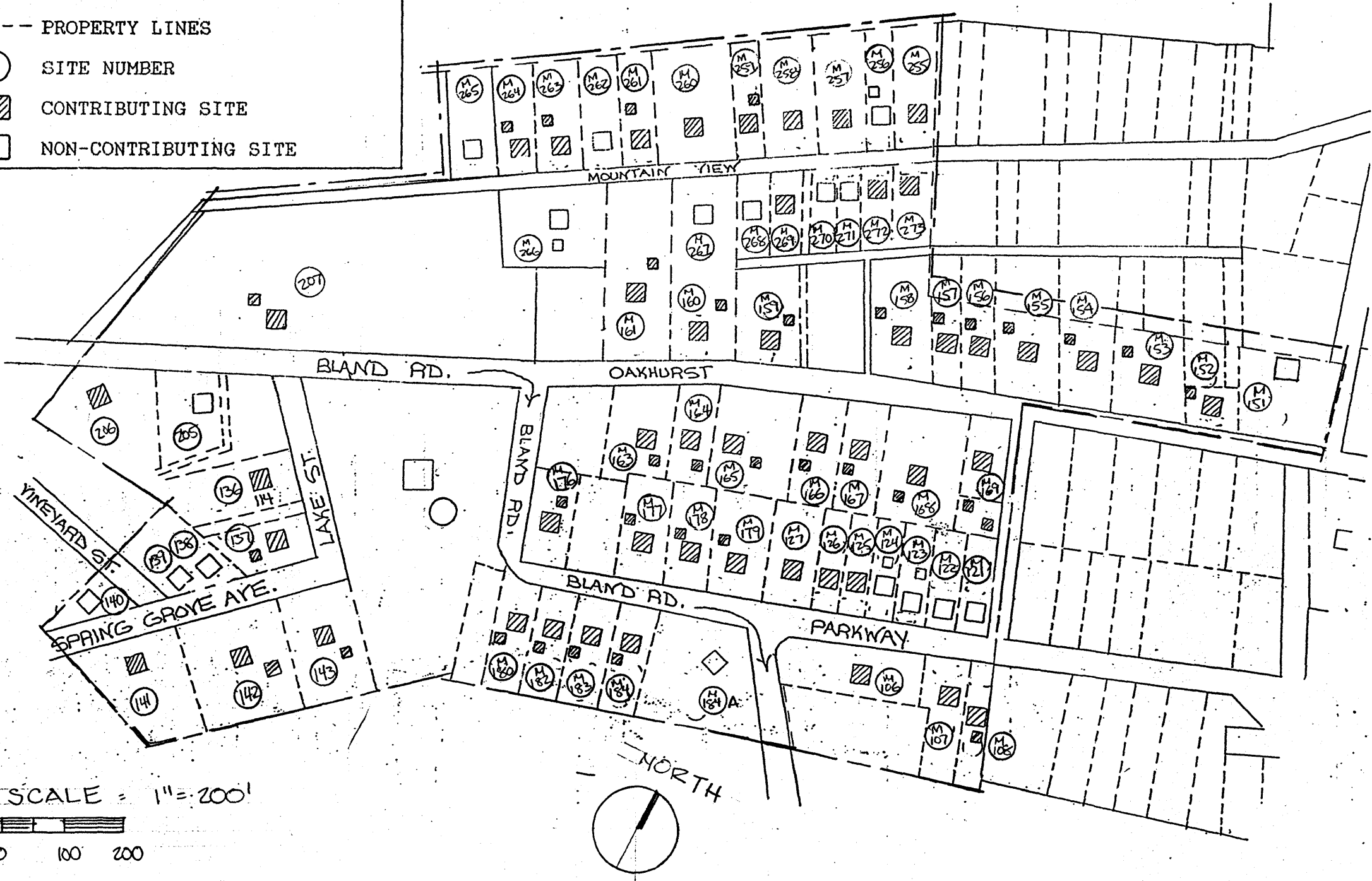
--- HISTORIC DISTRICT BOUNDARIES

--- PROPERTY LINES

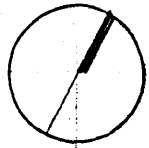
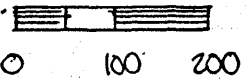
○ SITE NUMBER

▨ CONTRIBUTING SITE

□ NON-CONTRIBUTING SITE



SCALE = 1" = 200'



SKETCH MAP - SOUTH BLUEFIELD HISTORIC DISTRICT
BLUEFIELD WEST VIRGINIA

M. GIOULIS

NOV. 1991