

United States Department of the Interior  
National Park Service

NATIONAL REGISTER OF HISTORIC PLACES  
REGISTRATION FORM

This form is for use in nominating or requesting determinations for individual properties and districts. See instructions in How to Complete the National Register of Historic Places Registration Form (National Register Bulletin 16A). Complete each item by marking "X" in the appropriate box or by entering the information requested. If any item does not apply to the property being documented, enter "N/A" for "not applicable." For functions, architectural classification, materials, and areas of significance, enter only categories and subcategories from the instructions. Place additional entries and narrative items on continuation sheets (NPS Form 10-900a). Use a typewriter, word processor, or computer, to complete all items.

1. Name of Property

historic name WOMAN'S CLUB OF WINTER HAVEN

other names/site number Women's Civic League of Winter Haven & Vicinity Clubhouse

2. Location

street & number 660 Pope Avenue, NW N/A  not for publication

city or town Winter Haven N/A  vicinity

state FLORIDA code FL county Polk code 105 zip code 33880

3. State/Federal Agency Certification

As the designated authority under the National Historic Preservation Act, as amended, I hereby certify that this  nomination  request for determination of eligibility meets the documentation standards for registering properties in the National Register of Historic Places and meets the procedural and professional requirements set forth in 36 CFR Part 60. In my opinion, the property  meets  does not meet the National Register criteria. I recommend that this property be considered significant  nationally  statewide  locally. (See continuation sheet for additional comments.)

[Signature] 6/23/98  
Signature of certifying official/Title Date

Florida State Historic Preservation Officer, Division of Historical Resources  
State or Federal agency and bureau

In my opinion, the property  meets  does not meet the National Register criteria. (See continuation sheet for additional comments.)

\_\_\_\_\_  
Signature of certifying official/Title Date

\_\_\_\_\_  
State or Federal agency and bureau

4. National Park Service Certification

I hereby certify that the property is:

- entered in the National Register  See continuation sheet
- determined eligible for the National Register  See continuation sheet.
- determined not eligible for the National Register  See continuation sheet.
- removed from the National Register.
- other, (explain) \_\_\_\_\_

for Signature of the Keeper Date of Action  
Mel M. Kay 8/10/98

5. Classification

Ownership of Property
(Choose as many boxes as apply)

- private, public-local, public-State, public-Federal

Category of Property
(Choose only one box)

- buildings, district, site, structure, object

Number of Resources within Property
(Do not include any previously listed resources in the count)

Table with 2 columns: Contributing, Noncontributing. Rows for buildings, sites, structures, objects, total.

Name of related multiple property listings
(Enter "N/A" if property is not part of a multiple property listing.)

Clubhouses of Florida's Woman's Clubs

Number of contributing resources previously listed in the National Register

0

6. Function or Use

Historic Functions
(Enter categories from instructions)

SOCIAL/Clubhouse

Current Functions
(Enter categories from instructions)

SOCIAL/Clubhouse

7. Description

Architectural Classification
(Enter categories from instructions)

NO STYLE/Wood Frame Vernacular

Materials
(Enter categories from instructions)

foundation Brick, walls Stucco, roof Asphalt Shingle, other Glass, Wood

Narrative Description

(Describe the historic and current condition of the property on one or more continuation sheets.)

8. Statement of Significance

Applicable National Register Criteria

(Mark "x" in one or more boxes for the criteria qualifying the property for National Register listing.)

- Criteria A, B, C, D with checkboxes and descriptions.

Criteria Considerations

(Mark "x" in all the boxes that apply.)

Property is:

- Criteria A through G with checkboxes and descriptions.

Narrative Statement of Significance

(Explain the significance of the property on one or more continuation sheets.)

9. Major Bibliographical References

Bibliography

Cite the books, articles, and other sources used in preparing this form on one or more continuation sheets.)

Previous documentation on file (NPS):

- Documentation checkboxes: preliminary determination, previously listed, designated landmark, recorded by Historic American Buildings Survey, recorded by Historic American Engineering Record.

Areas of Significance

(Enter categories from instructions)

SOCIAL HISTORY

ARCHITECTURE

Period of Significance

1923-1948

Significant Dates

1923

Significant Person

N/A

Cultural Affiliation

N/A

Architect/Builder

Arch: Unknown

Blder: Seymour-Craig Company

Primary location of additional data:

- Location checkboxes: State Historic Preservation Office, Other State Agency, Federal agency, Local government, University, Other.

Name of Repository

#

WOMAN'S CLUB OF WINTER HAVEN  
Name of Property

Polk Co., FL  
County and State

**10. Geographical Data**

Acreage of Property Less than 1

**UTM References**

(Place additional references on a continuation sheet.)

1	1	7	4	2	7	7	4	0	3	1	0	0	0	0	0
	Zone		Easting						Northing						
2															

3															
	Zone		Easting						Northing						
4															

See continuation sheet

**Verbal Boundary Description**

(Describe the boundaries of the property on a continuation sheet.)

**Boundary Justification**

(Explain why the boundaries were selected on a continuation sheet.)

**11. Form Prepared By**

name/title Sidney Johnston, Historic Property Associates/Carl Shiver, Historic Sites Specialist

organization Bureau of Historic Preservation date June 1998

street & number R.A. Gray Building, 500 S. Bronough Street telephone (850) 487-2333

city or town Tallahassee state Florida zip code 32399-0250

**Additional Documentation**

Submit the following items with the completed form:

**Continuation Sheets**

**Maps**

A **USGS map** (7.5 or 15 minute series) indicating the property's location.

A **Sketch map** for historic districts and properties having large acreage or numerous resources.

**Photographs**

Representative **black and white photographs** of the property.

**Additional items**

(check with the SHPO or FPO for any additional items)

**Property Owner**

(Complete this item at the request of SHPO or FPO.)

name Woman's Club of Winter Haven, Inc.

street & number P.O. Box 7342 telephone (941) 299-8421

city or town Winter Haven state Florida zip code 33883

**Paperwork Reduction Act Statement:** This information is being collected for applications to the National Register of Historic Places to nominate properties for listing or determine eligibility for listing, to list properties, and amend listings. Response to this request is required to obtain a benefit in accordance with the National Historic Preservation Act, as amended (16 U.S.C. 470 *et seq.*).

**Estimated Burden Statement:** Public reporting burden for this form is estimated to average 18.1 hours per response including time for reviewing instructions, gathering and maintaining data, and completing and reviewing the form. Direct comments regarding this burden estimate or any aspect of this form to the Chief, Administrative Services Division, National Park Service, P.O. Box 37127, Washington, DC 20013-7127; and the Office of Management and Budget, Paperwork Reductions Projects (1024-0018), Washington, DC 20503.

**United States Department of the Interior  
National Park Service**

**NATIONAL REGISTER OF HISTORIC PLACES  
CONTINUATION SHEET**

Section number 7 Page 1

WOMAN'S CLUB OF WINTER HAVEN  
POLK COUNTY, FLORIDA  
DESCRIPTION

---

**SUMMARY**

The clubhouse of the Woman's Club of Winter Haven, located at 660 Pope Avenue, NW, is a two-story, wood frame vernacular building with a sprinkling of Mediterranean Revival style details. The irregular plan building rests on a continuous brick foundation and has a flat-topped hip roof surfaced with composition roll and composition shingles. The exterior walls are covered with textured stucco. The fenestration of the clubhouse varies on the major elevations of both stories. A two-story gabled roof extension, flanked by one-story wings, projects from the main body of the building on the main (northeast) facade. This pavilion contains a one-story, recessed entrance porch surmounted by an arched balcony. The building retains a high degree of its historic architectural integrity.

**SETTING**

The city of Winter Haven is a community of approximately 25,000 residents located in Polk County about fifteen miles east of Lakeland, Florida. The clubhouse stands immediately west of downtown Winter Haven near the east shore of Lake Howard, the largest natural body of water in the city. The building occupies an irregularly shaped lot at the north end of Pope Avenue at the intersection with Lake Howard Drive. The clubhouse is sited at an oblique angle to Pope Avenue, with the main facade facing to the northeast. The surrounding terrain gently slopes to the west toward Lake Howard. Vegetation in the immediate vicinity of the clubhouse consists of oak trees that shade the east elevation of the building and a pair of palmettos that bracket a secondary entrance at the northwest corner. A parking lot is found next to the northwest elevation of the clubhouse. Bordering the building on the south and southeast are single family dwellings dating from the same historic period as the clubhouse. To the east of the building, across Pope Avenue, stands the historic, six-story Haven Hotel (Haven Condominium), and on the northeast are small retail businesses that line Avenue D.

**PRESENT AND ORIGINAL APPEARANCE**

The building has an irregular plan and massing. The main two-story unit of the clubhouse, containing the auditorium and stage has a rectangular plan and is covered with a flat-topped hip roof surfaced with tar and gravel and asphalt shingles. The open eaves of the roof are decorated with carved rafter ends, scroll brackets, and projecting purlins. On the north and west of the core of the building are one-story wings with flat roofs and plain parapets. The exterior wall finish of the building is textured stucco, and the building rests on a continuous brick foundation.

United States Department of the Interior  
National Park Service

NATIONAL REGISTER OF HISTORIC PLACES  
CONTINUATION SHEET

Section number 7 Page 2

WOMAN'S CLUB OF WINTER HAVEN  
POLK COUNTY, FLORIDA  
DESCRIPTION

---

**Northeast (Main) Facade**

The main (northeast) facade of the building reveals its irregular massing and plan (photos 2, 4-5). Because of the limited view of the facade offered by the sloping terrain and the one-story wings, only a small portion of the two-story unit of the building is visible. A gable roof projects from the main unit and contains a full-height arch over the second story balcony, beneath which is a recessed one-story entrance porch. A simple wood balustrade is found at the front of the balcony. Exposed purlins that project eighteen inches from the front wall are found beneath the eaves of the gable roof of the facade pavilion and beneath the floor of the balcony. Just beneath the purlins under the balcony is a simple wooden sign bearing the words "Woman's Club." The entrance porch is embellished with scroll brackets in the upper corners, and a pair of wrought iron coach lamps flank the porch at about the same level as the wooden sign. The front entryway consists of 15-light French doors flanked by 5-light sidelights. A coach lamp is suspended from the ceiling of the porch. Pairs of 6/6 light double hung sash windows, each with 3-light transoms are found in the center of each of the one-story wings flanking the porch. Concrete steps with a metal hand rail in the center fan out from the stoop of the porch.

**Northwest Elevation**

The one-story wing on the northwest elevation of the clubhouse contains a cutaway corner porch (photo 6). The porch features a three-bay arcade that is supported by short Tuscan columns at the entrance bay and by impost brackets at the side walls. The short columns rest on balustrade walls that extend to the side walls of the porch. Balustrade walls also flank the concrete steps that lead to the porch deck. Like, the porch on the main facade, this entrance consists of 15-light French doors, but has 10-light sidelights. This doorway opens onto a tea room located next to the auditorium. A wrought iron coach lamp is suspended from the ceiling of the porch. Single and paired metal sash replacement windows, shaded by metal awnings, are found along the northwest elevation of the one-story wing of the building (photo 7). A slightly shorter, one-story kitchen wing is at the rear of the tea room wing. Marking the separation of the two extensions of the building is a double shouldered chimney that is surfaced with stucco and crested with a three-vent cap (photo 8). Small, three-light hopper windows are found in the brick foundation. There is also a small entry door to the foundation beneath the kitchen extension. The second story of the west elevation of the auditorium section of the building contains paired 6-light clerestory windows that illuminate the interior of the auditorium.

**United States Department of the Interior  
National Park Service**

**NATIONAL REGISTER OF HISTORIC PLACES  
CONTINUATION SHEET**

Section number 7 Page 3

WOMAN'S CLUB OF WINTER HAVEN  
POLK COUNTY, FLORIDA  
DESCRIPTION

---

**Southwest (Rear) Elevation**

The rear (southwest) elevation (photo 9) displays carved brackets along the roof eaves, two 6/6 light double hung sash windows, and a wood handicap ramp that extends nearly the length of the wall.

**Southeast Elevation**

Delivery doors open at the southeast corner of the (photos 2, 3, 9). The elevation displays pairs of 6/6 light double hung sash windows. As with the northwest elevation, the clerestory contains pairs of 6-light hopper windows.

**Interior**

The interior of the building contains approximately 5,300 square feet of floor space. This has been divided on the first floor into a meeting hall and stage, a tea room, a kitchen, and a vestibule with adjoining lounges and restrooms. Overlooking the auditorium at the northeast end of the building is a balcony. Original doors, hardware, and finishes remain in place. The walls are covered with plaster, and the floors are made of tongue-and-groove pine boards. The ceiling of the auditorium is approximately twenty feet from the floor. The ceiling height in other spaces is ten feet.

A pair of French doors at the main entrance porch open into a vestibule, giving access to a men's lounge and restroom on the northeast and to similar facilities for women on the southwest (photo 10-11). The women's lounge opens onto the triangular porch at the northwest corner of the building. Beyond the restrooms rise dog-leg staircases that provide access to the second story balcony. The vestibule, lounges, and staircases are contained within the one-story extension that projects from the northeast facade of the two-story unit of the building.

The staircases lead to the interior balcony that extends the width of the auditorium and is divided into six risers (photos 12-13, 16). The interior balcony projects about 20 feet from the northeast wall into the auditorium space. The leading edge of the balcony is supported from below by square wood posts adorned with carved brackets. At the front of the balcony is a balustrade consisting of newel posts, slat balusters, and coffered kick panels. Paneled wood doors at the rear of the balcony open onto the exterior balcony in the front-facing gable. Arches on the sides of the projecting gable provide access to sun decks atop the one-story wings. On the first

**United States Department of the Interior  
National Park Service**

**NATIONAL REGISTER OF HISTORIC PLACES  
CONTINUATION SHEET**

Section number 7 Page 4

WOMAN'S CLUB OF WINTER HAVEN  
POLK COUNTY, FLORIDA  
DESCRIPTION

---

floor, a pair of paneled wood doors provide access between the vestibule and the auditorium. Two small closets are found under the balcony. The ceiling of the auditorium features boxed beams with carved brackets. Floor, chair, and crown moldings finish the wall surfaces. A stage, flanked by steps with wrought iron handrails, rises four feet above the floor of the auditorium. The stage occupies approximately 1,000 square feet of floor space at the southwest end of the building, and is adorned with molded kick panels and a square proscenium with a coffered wood surround (photo 12). A paneled wood door is located to the left of the stage.

**Alterations**

Narrow openings on the main (northeast) facade originally contained slotted vents that are presently filled with metal awning windows. Replacement metal sash windows fill the spaces of the original multi-light casement windows along the west elevation.



United States Department of the Interior  
National Park Service

**NATIONAL REGISTER OF HISTORIC PLACES  
CONTINUATION SHEET**

Section number 8 Page 1

WOMAN'S CLUB OF WINTER HAVEN  
POLK COUNTY, FLORIDA  
SIGNIFICANCE

---

**SUMMARY**

The Woman's Club of Winter Haven is significant at the local level under Criteria A and C in the areas of Social History and Architecture. The building is significant as the meeting place for the oldest formally organized women's social service organization in the city of Winter Haven. Erected in 1923, the clubhouse is also the only historic clubhouse standing in the city. The building was the site of monthly meetings of the local Women's Civic League and in 1930 was the location of the annual convention of the Florida Federation of Women's Clubs. The building is also significant in the area of Architecture, for embodying distinctive features of clubhouses erected by Florida women's clubs, by containing such features as a meeting hall and stage and separate dining areas to host club meetings and other events. The stylistic features of the basically wood frame vernacular building are secondary to its specialized function, reflected in the layout of the interior. The clubhouse contributes to the CLUBHOUSES OF FLORIDA'S WOMAN'S CLUBS Multiple Property Submission under the Florida Land Boom 1921-1926 Historic Context and the F.1 Property Type: Clubhouses.

**HISTORICAL CONTEXT**

The vicinity of Winter Haven was first settled in the 1860s with the arrival of the Thornhill family. They were soon followed by the Boyd, Inman, Jackson, Sykes, and Eycleshimer families who began to grow a variety of crops, including strawberries, tomatoes, peaches, and peppers. The community of Winter Haven was platted in 1884. The first mercantile store was opened by F.A.K. Harris and his wife, Adele. During the period the railroad was constructed through the vicinity, the Harrises cooked meals for the rail workers who dubbed the settlement "Harris Corners."

By 1900, the population of the town had grown to approximately 400, and Winter Haven could boast having citrus groves, a school, post office, social club, hotels, several churches, a canning factory, and the headquarters of the Florida Growers Association. Winter Haven was incorporated in 1911, and by this time the residents had acquired banks, a community band, a newspaper, and a movie theater. Many of the larger of the numerous lakes in the area had been connected by canals, prompting the founding in 1915 of the Twenty Lakes Boat Course Club.

The Florida Boom of the 1920s brought land speculation and a great influx of newcomers to the area. In 1923, the Florida Citrus Festival was first held to salute this important

United States Department of the Interior  
National Park Service

**NATIONAL REGISTER OF HISTORIC PLACES  
CONTINUATION SHEET**

Section number 8 Page 2

WOMAN'S CLUB OF WINTER HAVEN  
POLK COUNTY, FLORIDA  
SIGNIFICANCE

agribusiness. In 1936, tourism became an economic mainstay in Winter Haven when a man named Dick Pope opened Cypress Gardens to the public.<sup>1</sup>

**HISTORICAL SIGNIFICANCE**

Organized in November 1913, the Women's Civic League of Winter Haven and Vicinity brought together prominent women in the communities of Winter Haven and Florence Villa. The latter was a rural settlement located several miles north of Winter Haven. Sixty-four charter members met in the Bonita Theater in downtown Winter Haven and elected Mary B. Jewett as president. Other officers selected were Mrs. W.W. Mann, vice president; Mrs. Ira Whitehair, second vice president; Mrs. Frank S. Poole, recording secretary; Mrs. W.J. Smith, corresponding secretary; and Mrs. John Snively, treasurer. The following year, the club joined the Florida Federation of Women's Clubs, which had emerged as the dominant women's organization in Florida. Two years later the Winter Haven organization was admitted to the General Federation of Women's Clubs. In 1915, the club incorporated, with its primary charge being to "increase the public interest in all matters relating to good citizenship, to improve local conditions, and to promote general welfare." Between 1913 and 1923, the Women's Civic League did not have a clubhouse but met in the Presbyterian Church Annex (demolished).<sup>2</sup>

Early projects sponsored by the League included encouraging the Atlantic Coast Line Railroad to build a new depot in Winter Haven and to reroute its tracks through the city to avoid switching cars in the central park. Members lobbied the city government to establish a municipal fire department and to erect fences to contain wandering livestock. In 1918, the League initiated a tree planting beautification program, resulting in the planting of approximately 600 shade trees in various parts of the city. A contribution of \$456 by the organization launched a campaign for the building of the Winter Haven General Hospital.<sup>3</sup>

<sup>1</sup> The entire Historical Context is taken from "Where We've Come From: The First Settlers," Destination Winter Haven (Internet page). <http://www.winterhavenfl.com/history/>, June 1998.

<sup>2</sup> Polk County Public Records, Corporation Book C, p. 96-99, Polk County Courthouse, Bartow, Florida; Jessie Hamm Meyer, Leading the Way: a Century of Service: GFWC Florida Federation of Women's Clubs, 1895-1995 (Lakeland, FL: GFWC-Florida Federation of Women's Clubs, 1994), 74; Josephine Burr, History of Winter Haven, Florida (Winter Haven: Larry Burr Printing Company, 1974), 78; Helen Schuler, Memories: A History of the Woman's Club of Winter Haven (Winter Haven: Woman's Club, 1986), n.p.

<sup>3</sup> Burr, Winter Haven, 86-87, 105-106; Mrs. S.F. Poole, "League Is Force in Activity of City," Florida Clubwoman 9 (March 1930), 1; Schuler, Woman's Club, n.p.

United States Department of the Interior  
National Park Service

NATIONAL REGISTER OF HISTORIC PLACES  
CONTINUATION SHEET

Section number 8 Page 3

WOMAN'S CLUB OF WINTER HAVEN  
POLK COUNTY, FLORIDA  
SIGNIFICANCE

Education played an important role in the activities of the club. In 1915, the League assumed responsibility for maintaining the city library. The library had been organized in 1910 as a private institution and was initially supervised by a men's club and later was entrusted to the care of the local chapter of the Women's Temperance Union. In 1915, Florence Inman, a League member, donated \$1,444 for the acquisition of books, and the name was changed to the Winter Haven Free Public Library.<sup>4</sup>

In 1915, the Civic League purchased the lot on which the present woman's club building stands. Plans for the building were prepared, but before construction could begin in 1917, the nation entered World War I, and construction was delayed. Efforts for construction of a clubhouse were renewed after the end of the war, and a fund raising campaign was undertaken. Membership in the organization swelled from ninety-five in 1914 to 297 in 1923, reaching its zenith in 1924 with 374 members. The building site purchase in 1915 was enlarged in 1923 by the purchase of a neighboring lot. The League's charter was amended in March 1923 to permit the organization to hold \$50,000 in real estate.<sup>5</sup>

In the fall of 1922, a new set of architectural plans were drawn up, and construction began early in the new year. The project was completed in November 1923 at a cost of \$28,000. Much fanfare was associated with the dedication of the building. Downtown merchants closed their businesses for the ceremony on January 22, 1924. Mrs. Frank S. Poole, the club's recording secretary, submitted an article on the building and a photograph of it which were published in the March 1924 issue of the Florida Bulletin, a journal published by the Florida Federation of Women's Clubs. The article stated that the auditorium could accommodate 550 patrons, and the adjoining tea room was able to host 100 guests. A kitchen and pantry provided refreshments for guests in the tea room. The textured stucco on the exterior walls was originally painted pink, with white trim applied to the wood work.<sup>6</sup> Later historic period picture postcards show the body of the building painted light brown, with wood details still painted white. The name of the architect who drew up the plans for the clubhouse was not recorded. The Seymour-Craig Company of Winter Haven supervised construction.

<sup>4</sup> Burr, Winter Haven, 86-87, 1050106; Mrs. S.F. Poole, "League Is Force in Activity of City," Florida Clubwoman 9 (March 1930); Schuler, Woman's Club, n.p.

<sup>5</sup> Polk County Public Records, Deed Book 129, p. 42, Deed Book 221, p. 554, Corporation Book D, p. 589, Polk County Courthouse, Bartow, Florida; Helen Schuler, Memories: A History of the Womans Club of Winter Haven, Florida (Winter Haven: Woman's Club, 1986), n.p.

<sup>6</sup> Mrs. S. Frank Poole, "Women's Civic League of Winter Haven," Florida Bulletin 3 (March 1924), 1, 5.

United States Department of the Interior  
National Park Service

NATIONAL REGISTER OF HISTORIC PLACES  
CONTINUATION SHEET

Section number 8 Page 4

WOMAN'S CLUB OF WINTER HAVEN  
POLK COUNTY, FLORIDA  
SIGNIFICANCE

---

The Civic League hosted various affairs in the clubhouse over the years, including bazaars, bridge benefits, dinner dances, and music recitals. Performances such as the Gilbert and Sullivan operetta "H.M.S. Pinafore," entertained audiences. Lakeshore beautification projects sponsored by the organization helped improve the appearance of the city. The League also worked cooperatively with the local parent-teacher associations and held meetings dealing with child welfare work through the schools and American Red Cross. Annual meetings each April featured guest speakers, recitals, and installation of elected club officers.<sup>7</sup> Other organizations leased the clubhouse. In 1924, the local Hundred Lakes Orchestra performed in concert, and later that year, the Lake Howard Civic Association held its second annual social in the building. Among the most important events held in the building was the 1930 annual convention of the Florida Federation of Women's Clubs. Hundreds of members attended. The federation's monthly journal, Florida Clubwoman, featured articles about the Winter Haven Civic League's clubhouse, amenities found in the city, and the best routes to travel to Winter Haven from various parts of the state.<sup>8</sup>

During the 1930s, membership in the organization ranged between 96 and 162. Among the most important projects of the League during the Great Depression was working with the Federal Housing Authority (FHA) to promote the building of affordable housing in Winter Haven. The organizational meeting of the Women's Division of the FHA was held at the clubhouse in 1935. The League continued its service activities during World War II. In 1942, area chapters of the Polk County Defense Council met in the clubhouse. In 1943, the club leased its building to the noncommissioned officers stationed at Bartow Airbase, a lease that was interrupted by fire in December of that year. Repair of the damage—which was covered by insurance—cost \$15,000. In 1944, the League hosted members of the Polk County Federation of Women's Clubs, which discussed improving financial support for county schools. Federation members from Bartow, Lakeland, Lake Wales, and Winter Haven submitted recommendations to the Florida Federations of Women's Clubs for endorsement by the statewide association.<sup>9</sup>

The Women's Civic League of Winter Haven and Vicinity was renamed the Woman's Club of Winter Haven in 1944. Like many woman's clubs throughout Florida, the Winter Haven organization has experienced significant decreases in membership, counting only 207 members in 1986. Clubhouse leasing and maintenance problems challenge the organization as membership dwindles. The Woman's Club is currently negotiating with Historic Winter Haven, Inc., a non-

---

<sup>7</sup> Winter Haven Chief, November 14, 18, 29, 1924, February 19, March 21, 1925; "Winter Haven, 1929-1930," Florida Clubwoman 9 (March 1930), 6.

<sup>8</sup> Florida Clubwoman 9 (March 1930), 1-18; Winter Haven Chief, December 10, 16, 1924, May 4, 9, 1925.

<sup>9</sup> Winter Haven Herald, April 3, 10, May 22, 29, 1942, May 4, October 13, 1944.

**United States Department of the Interior  
National Park Service**

**NATIONAL REGISTER OF HISTORIC PLACES  
CONTINUATION SHEET**

Section number 8 Page 5

WOMAN'S CLUB OF WINTER HAVEN  
POLK COUNTY, FLORIDA  
SIGNIFICANCE

---

profit organization, to assume ownership and maintenance of the property with the intent of developing a museum in the clubhouse.

**ARCHITECTURAL SIGNIFICANCE**

The Woman's Club of Winter Haven clubhouse is a specialized type of building designed an constructed to serve social functions. Similar in plan to many clubhouses in the state, the Winter Haven building features a centrally-located meeting hall or auditorium, which serves as the hub for activities held in the facility. The clubhouse also features a dinning area and a kitchen to support the preparation of food for a variety of occasions, including banquets. The interior plan of the building offers freedom of movement between rooms. French and paneled wood doors separate the various public spaces. The inclusion of a stage allows the production of theatrical presentations and musical concerts, as well as offering speakers a commanding view of the audience. The woman's club is the only historic clubhouse remaining in the city of Winter Haven. The building contributes to the CLUBHOUSES OF FLORIDA'S WOMAN'S CLUBS Multiple Property Submission through a sense of time, place, and historical development. It provides a sense of ambiance, linkage, and character to the historic building fabric of Winter Haven.

United States Department of the Interior  
National Park Service

NATIONAL REGISTER OF HISTORIC PLACES  
CONTINUATION SHEET

Section number 9 Page 1

WOMAN'S CLUB OF WINTER HAVEN  
POLK COUNTY, FLORIDA  
BIBLIOGRAPHICAL REFERENCES

---

**Books**

Blackman, Lucy. The Women of Florida. 2 vols. Jacksonville: Southern Historical Publishing Associates, 1940.

Burr, Josephine. History of Winter Haven, Florida. Winter Haven: Larry Burr Printing, Company, 1974.

Hetherington, M.F. History of Polk County, Florida. Lakeland: M.F. Hetherington, 1928.

Meyer, Jessie Hamm. Leading the Way: A Century of Service; G.F.W.C. Florida Federation of Women's Clubs, 1895-1995. Lakeland: GFWC-Florida Federation of Women's Clubs, 1994.

Schuler, Helen. Memories: A History of the Woman's Club of Winter Haven, Polk County, Florida. Winter Haven: Woman's Club, 1986.

**Public Documents**

Polk County Public Records, Corporation Books, Polk County Courthouse, Bartow, Florida.

Polk County Public Records, Dee Books, Polk County Courthouse, Bartow, Florida.

**Periodicals**

DeHaven, Mrs. Ford. "A Greeting to the Clubwomen of Florida," Florida Clubwoman. 9 (March 1930): 1.

Florida Federation of Women's Clubs. 1923-1924 Annual. Lakeland: Florida Federation of Women's Clubs, 1923.

Poole, Mrs. S.F. "League Is Force in Activity of City," Florida Clubwoman. 9 (March 1930): 1.

\_\_\_\_\_. "Women's Civic League of Winter Haven," Florida Bulletin 3 (march 1930): 1, 5.

**United States Department of the Interior  
National Park Service**

**NATIONAL REGISTER OF HISTORIC PLACES  
CONTINUATION SHEET**

Section number     9     Page     2    

WOMAN'S CLUB OF WINTER HAVEN  
POLK COUNTY, FLORIDA  
BIBLIOGRAPHICAL REFERENCES

---

“Winter Haven, 1929-1930,” Florida Clubwoman. 9 (March 1930): 6.

**Maps**

Sanborn Map Company. Fire Insurance Map of Winter Haven, Polk County, Florida. New York:  
Sanborn Map Company, 1914, 1919, 1924, 1928.

**Newspapers**

Winter Haven Chief

Winter Haven Herald

**Internet Sources**

“Where We’ve Come From: The First Settlers,” Destination Winter Haven (Internet page).  
<http://www.winterhavenfl.com/history/>, 1998.

**United States Department of the Interior  
National Park Service**

## **NATIONAL REGISTER OF HISTORIC PLACES CONTINUATION SHEET**

Section number 10 Page 1

WOMAN'S CLUB OF WINTER HAVEN  
POLK COUNTY, FLORIDA  
GEOGRAPHICAL DATA

---

### **Verbal Boundary Description**

Gifford's Survey, Plat Book 2, page 30, lots 12 & 13.

### **Boundary Justification**

All resources associated with the historic Woman's Club of Winter Haven are located on the above described property.



**United States Department of the Interior  
National Park Service**

**NATIONAL REGISTER OF HISTORIC PLACES  
CONTINUATION SHEET**

Section number \_\_\_\_\_ Page 1

WOMAN'S CLUB OF WINTER HAVEN  
POLK COUNTY, FLORIDA  
PHOTOGRAPHS

---

**LIST OF PHOTOGRAPHS**

1. Woman's Club of Winter Haven
2. 660 Pope Avenue, NW, Winter Haven (Polk County), FL
3. William R. Adams, Historic Property Associates, Inc.
4. 1997
5. Historic Property Associates, Inc., St. Augustine, Florida
6. Landscape View, Southeast Elevation, Looking Northwest
7. Photo 1 of 19

Numbers 1-5 are the same for the remaining photographs.

6. Main (Northeast) Facade and Southeast Elevation, Looking Southwest
7. Photo 2 of 19

6. Southeast Elevation, Looking Southwest
7. Photo 3 of 19

6. Main (Northeast) Facade, Looking South
7. Photo 4 of 19

6. Detail, Entrance Porch, Looking Southwest
7. Photo 5 of 19

6. Detail, Corner Porch, Looking South
7. Photo 6 of 19

6. Detail, Northwest Elevation, Looking Southeast
7. Photo 7 of 19

6. Northwest Elevation, Looking Northeast
7. Photo 8 of 19

6. Southwest (Rear) Elevation, Looking Northwest
7. Photo 9 of 19

**United States Department of the Interior  
National Park Service**

**NATIONAL REGISTER OF HISTORIC PLACES  
CONTINUATION SHEET**

Section number \_\_\_\_\_ Page 2

WOMAN'S CLUB OF WINTER HAVEN  
POLK COUNTY, FLORIDA  
PHOTOGRAPHS

---

- 6. Interior, View of Vestibule, Looking West
- 7. Photo 10 of 19
  
- 6. Interior, Women's Lounge, Looking West
- 7. Photo 11 of 19
  
- 6. Interior, Balcony and Auditorium, Looking Southeast
- 7. Photo 12 of 19
  
- 6. Interior, Balcony, Looking Southeast
- 7. Photo 13 of 19
  
- 6. Interior, Auditorium, Looking Southeast
- 7. Photo 14 of 19
  
- 6. Interior, Auditorium, Looking Northwest toward Tea Room.
- 7. Photo 15 of 19
  
- 6. Interior, Auditorium, Looking Northeast toward Balcony
- 7. Photo 16 of 19
  
- 6. Interior, Tea Room, Looking North
- 7. Photo 17 of 19
  
- 6. Interior, Kitchen, Looking Southeast
- 7. Photo 18 of 19
  
- 6. Interior, Rear Entrance, Looking Southeast
- 7. Photo 19 of 19

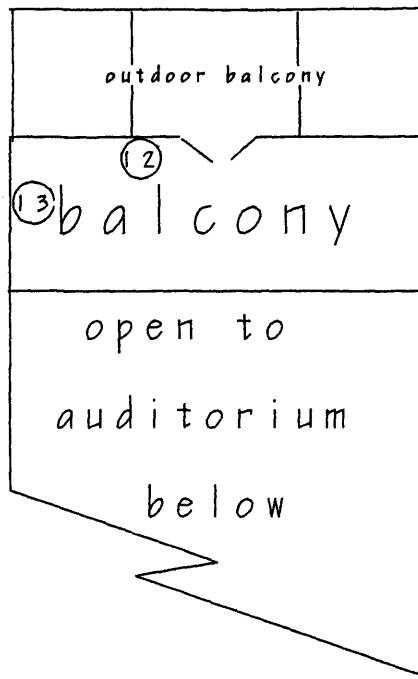
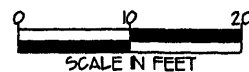
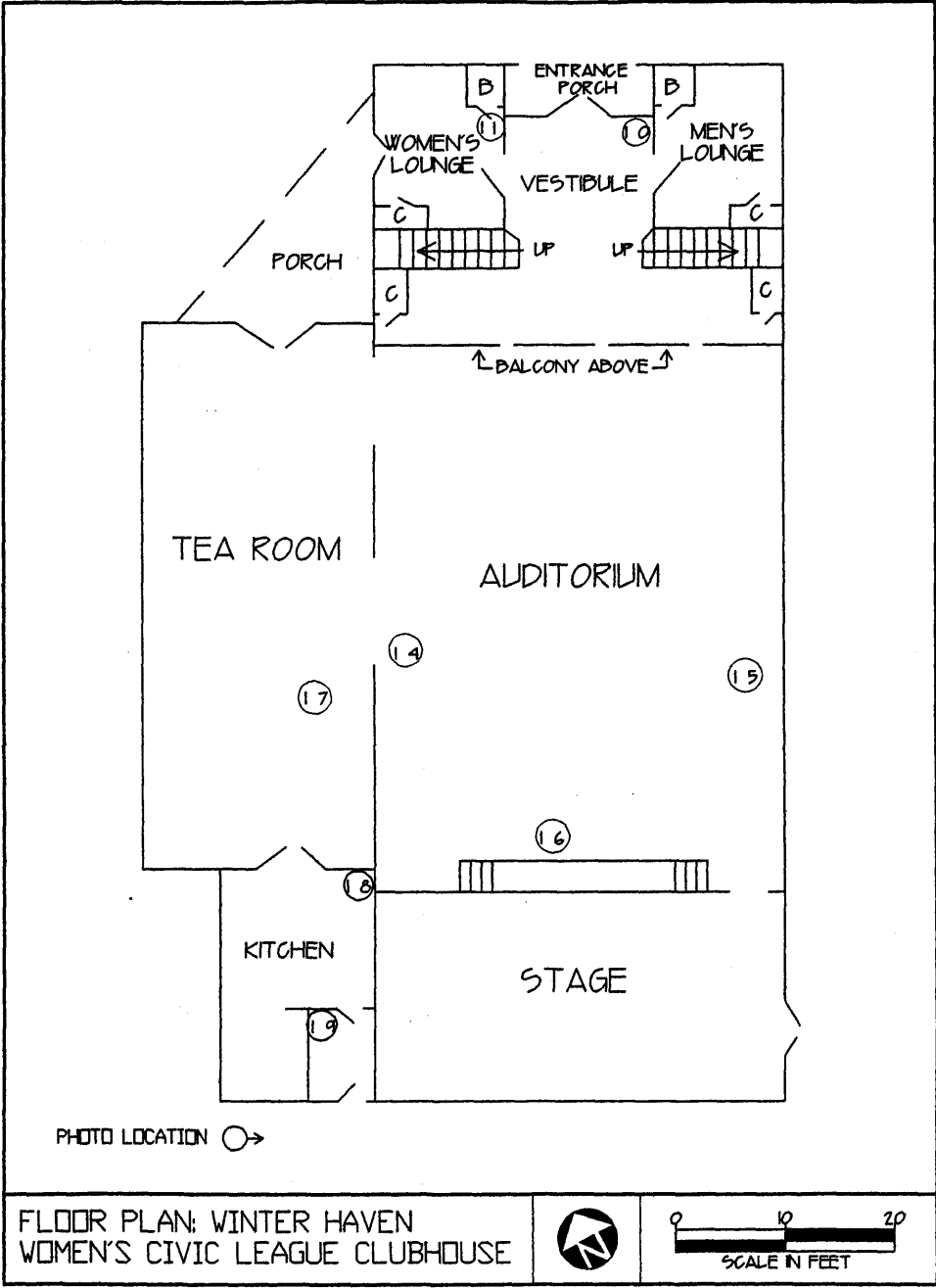



PHOTO LOCATION ○→


SECOND STORY FLOOR PLAN  
WOMEN'S CIVIC LEAGUE CLUBHOUSE





**LEGEND**

CONTRIBUTING BUILDING 

NON-CONTRIBUTING BUILDINGS 


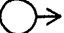
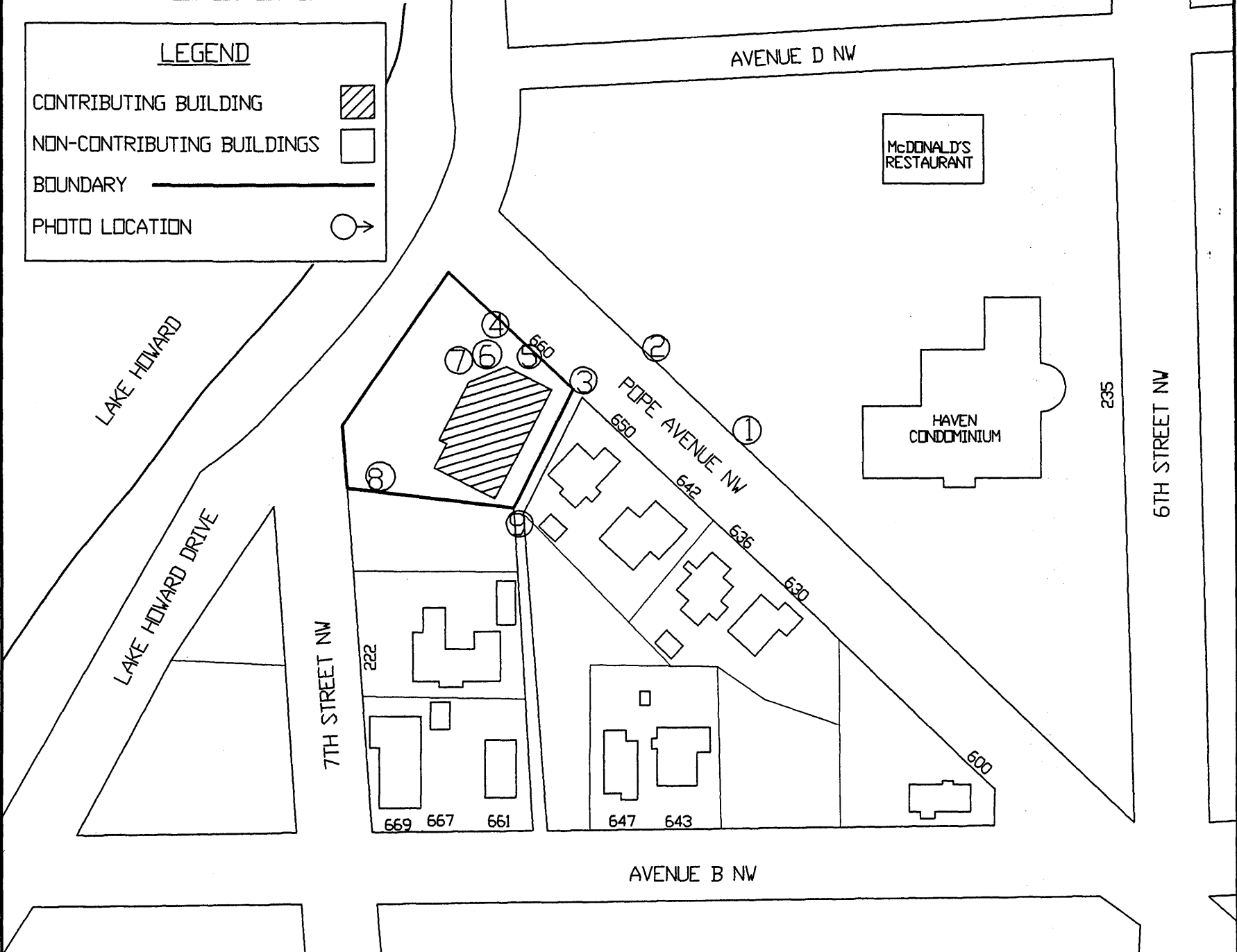
BOUNDARY 

PHOTO LOCATION 



SITE PLAN: WINTER HAVEN  
WOMEN'S CIVIC LEAGUE CLUBHOUSE

