

**United States Department of the Interior
National Park Service**

**National Register Of Historic Places
Continuation Sheet**

Section number: Contemporary Photographs

Page: 1 of 16

Stanislaus Branch, CF&RES
Name of Property

Tuolumne County, California
County and State



1 Setting. Overview of east end of Stanislaus Branch Station. Corner of warehouse (Building 2220) in foreground, left, and dormitory (Building 1346) visible among the trees. View toward southwest (210°).

United States Department of the Interior
National Park Service

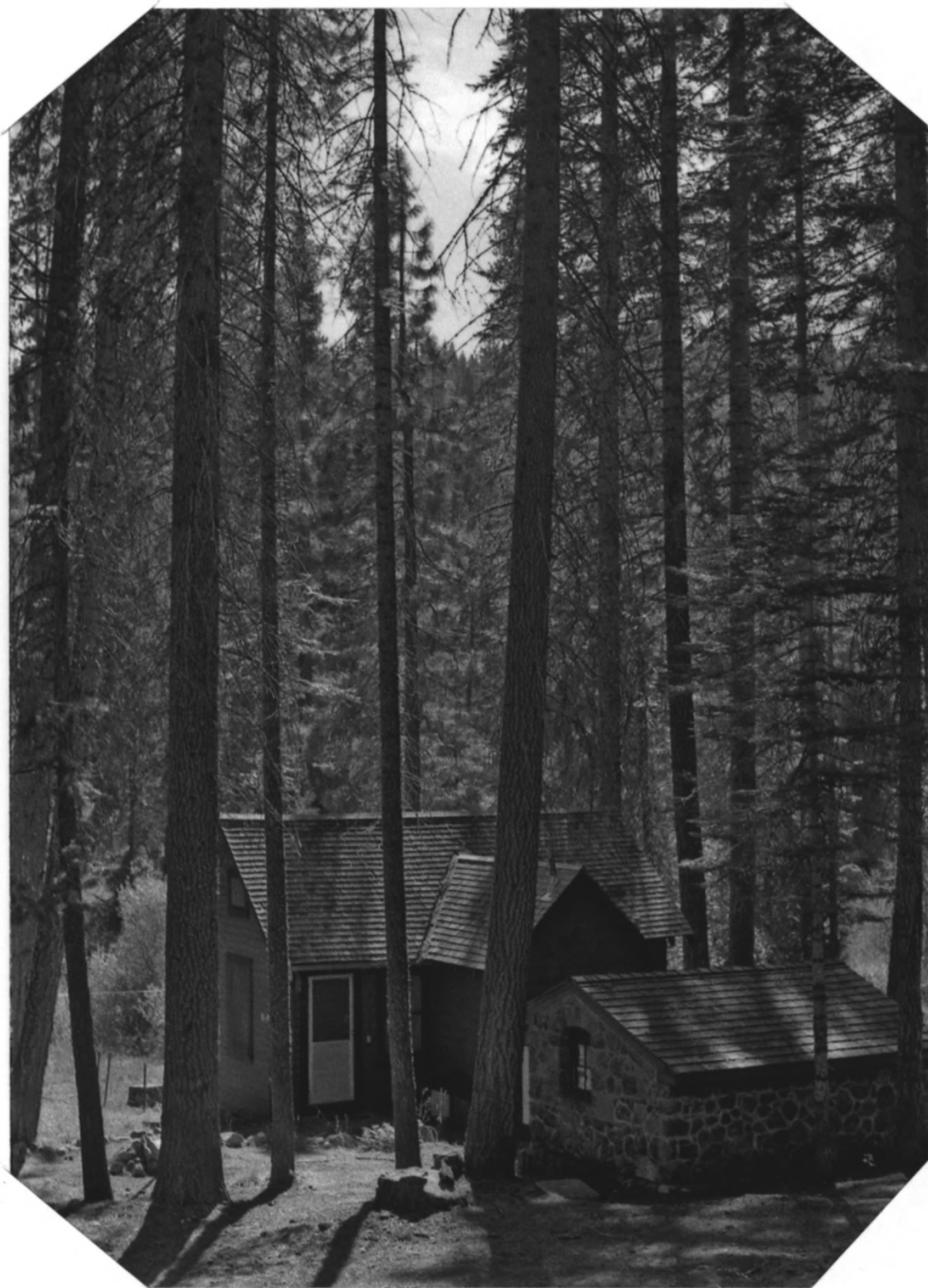
**National Register Of Historic Places
Continuation Sheet**

Section number: Contemporary Photographs

Page: 2 of 16

Stanislaus Branch, CF&RES
Name of Property

Tuolumne County, California
County and State



3 Overview of west end of Stanislaus Branch Station. Stone pump house (Building 2614) and rear of cabin (Building 1218) among the trees. View toward south (185°).

**United States Department of the Interior
National Park Service**

**National Register Of Historic Places
Continuation Sheet**

Section number: Contemporary Photographs

Page: 3 of 16

Stanislaus Branch, CF&RES
Name of Property

Tuolumne County, California
County and State



4 Experimental plot enclosure ruin. Note dormitory in background, behind trees. View toward southeast (130°).

**United States Department of the Interior
National Park Service**

**National Register Of Historic Places
Continuation Sheet**

Section number: Contemporary Photographs

Page: 4 of 16

Stanislaus Branch, CF&RES
Name of Property

Tuolumne County, California
County and State



**5 Mature ponderosa pine with section of
ladder high in the tree, among the branches.**

United States Department of the Interior
National Park Service

National Register Of Historic Places Continuation Sheet

Section number: Contemporary Photographs

Page: 5 of 16

Stanislaus Branch, CF&RES
Name of Property

Tuolumne County, California
County and State



7 Warehouse, front. Building 2220. View toward east (90°).

**United States Department of the Interior
National Park Service**

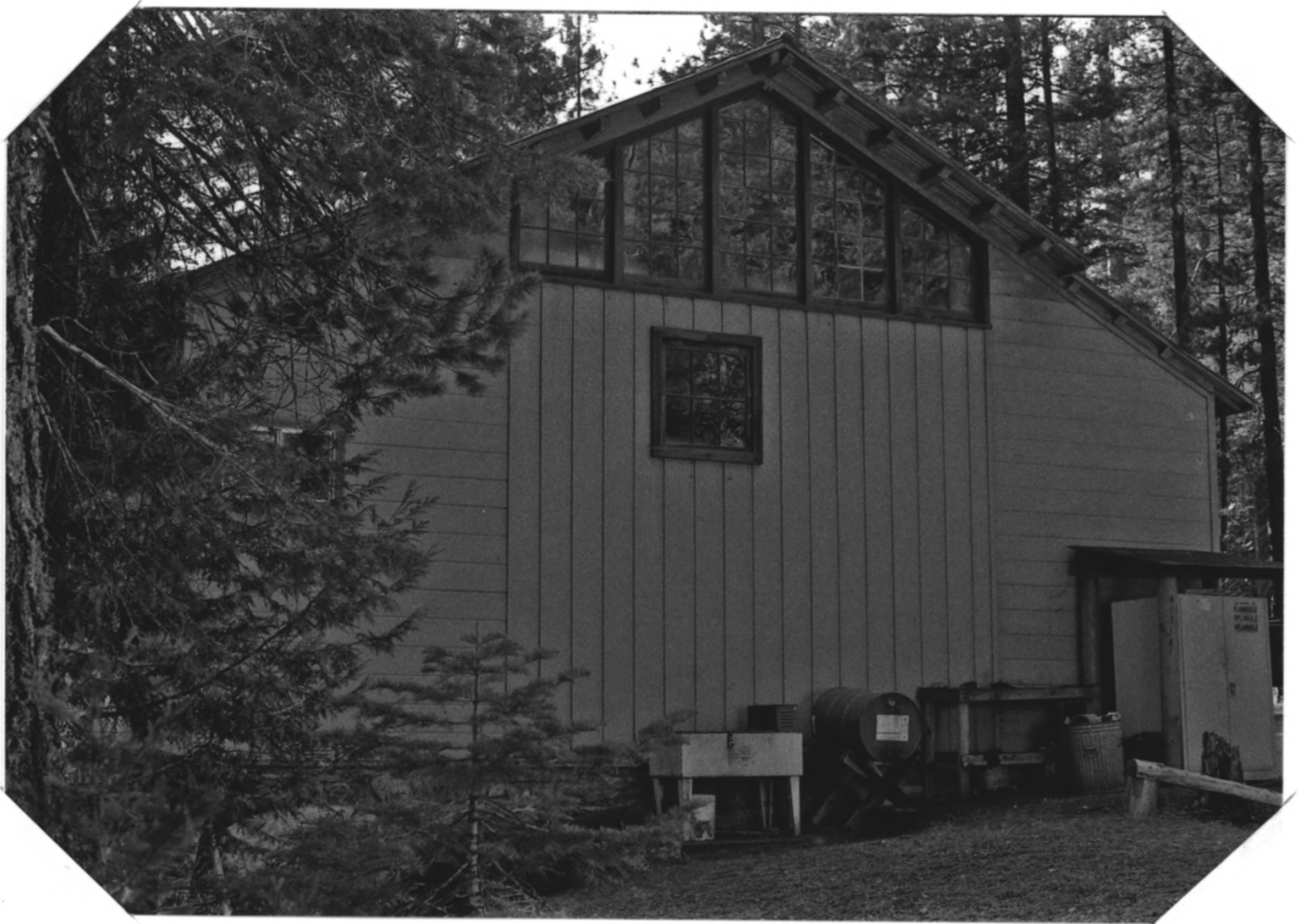
**National Register Of Historic Places
Continuation Sheet**

Section number: Contemporary Photographs

Page: 6 of 16

Stanislaus Branch, CF&RES
Name of Property

Tuolumne County, California
County and State



9 Warehouse, northeast gable end. Building 2220. View toward east (240°).

**United States Department of the Interior
National Park Service**

**National Register Of Historic Places
Continuation Sheet**

Section number: Contemporary Photographs

Page: 7 of 16

Stanislaus Branch, CF&RES
Name of Property

Tuolumne County, California
County and State



**10 Dormitory, front (porch faces South Fork Stanislaus River).
Building 1346. View toward northwest (290°).**

United States Department of the Interior
National Park Service

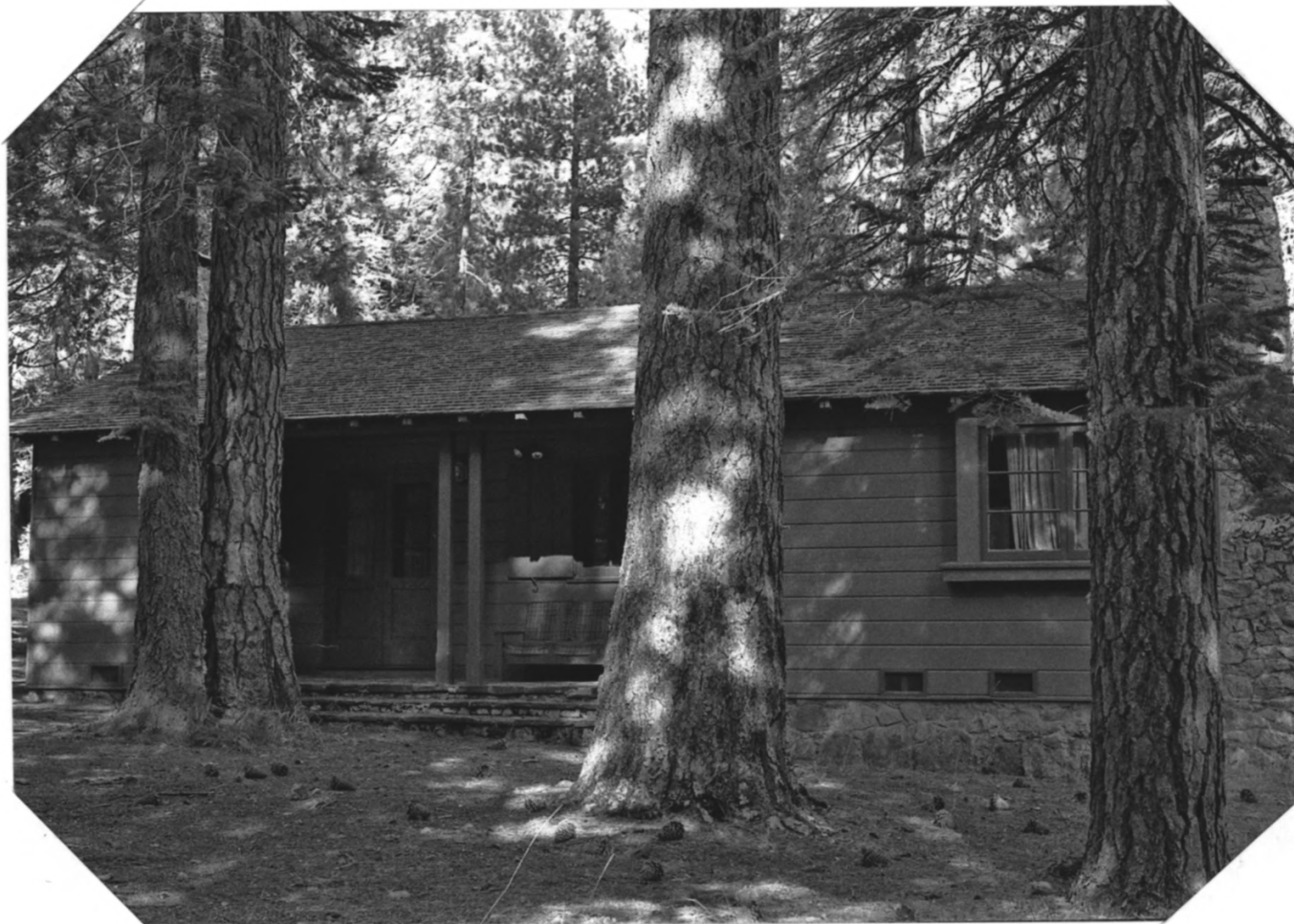
National Register Of Historic Places Continuation Sheet

Section number: Contemporary Photographs

Page: 8 of 16

Stanislaus Branch, CF&RES
Name of Property

Tuolumne County, California
County and State



11 Dormitory, southwest side.
Building 1346.

United States Department of the Interior
National Park Service

National Register Of Historic Places
Continuation Sheet

Section number: Contemporary Photographs

Page: 9 of 16

Stanislaus Branch, CF&RES
Name of Property

Tuolumne County, California
County and State



**16 Dormitory, rear of west wing;
chimney detail. Building 1346.**

United States Department of the Interior
National Park Service

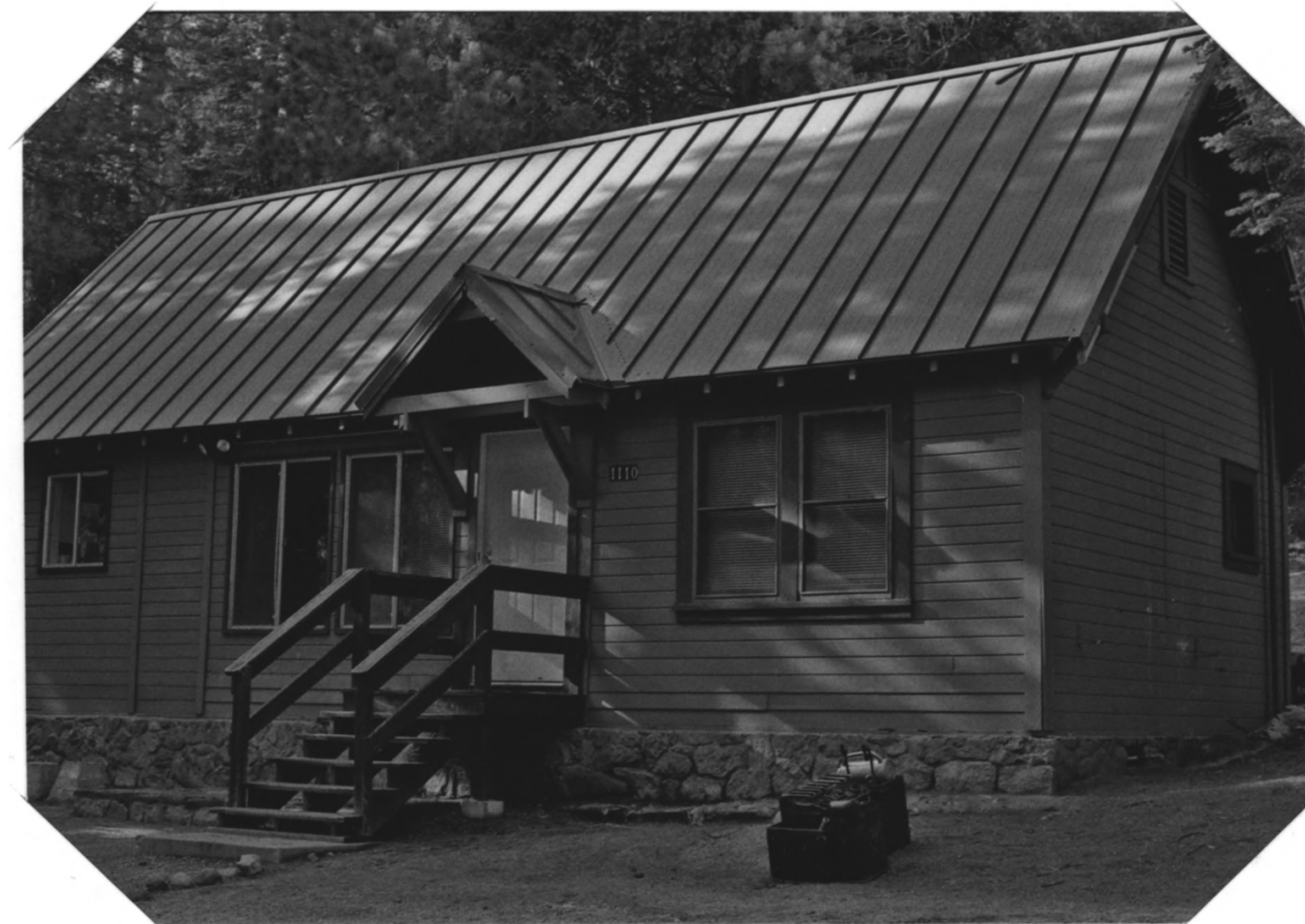
National Register Of Historic Places Continuation Sheet

Section number: Contemporary Photographs

Page: 10 of 16

Stanislaus Branch, CF&RES
Name of Property

Tuolumne County, California
County and State



17 Caretaker's residence, front. Building 1110.
View toward northwest (305°).

**United States Department of the Interior
National Park Service**

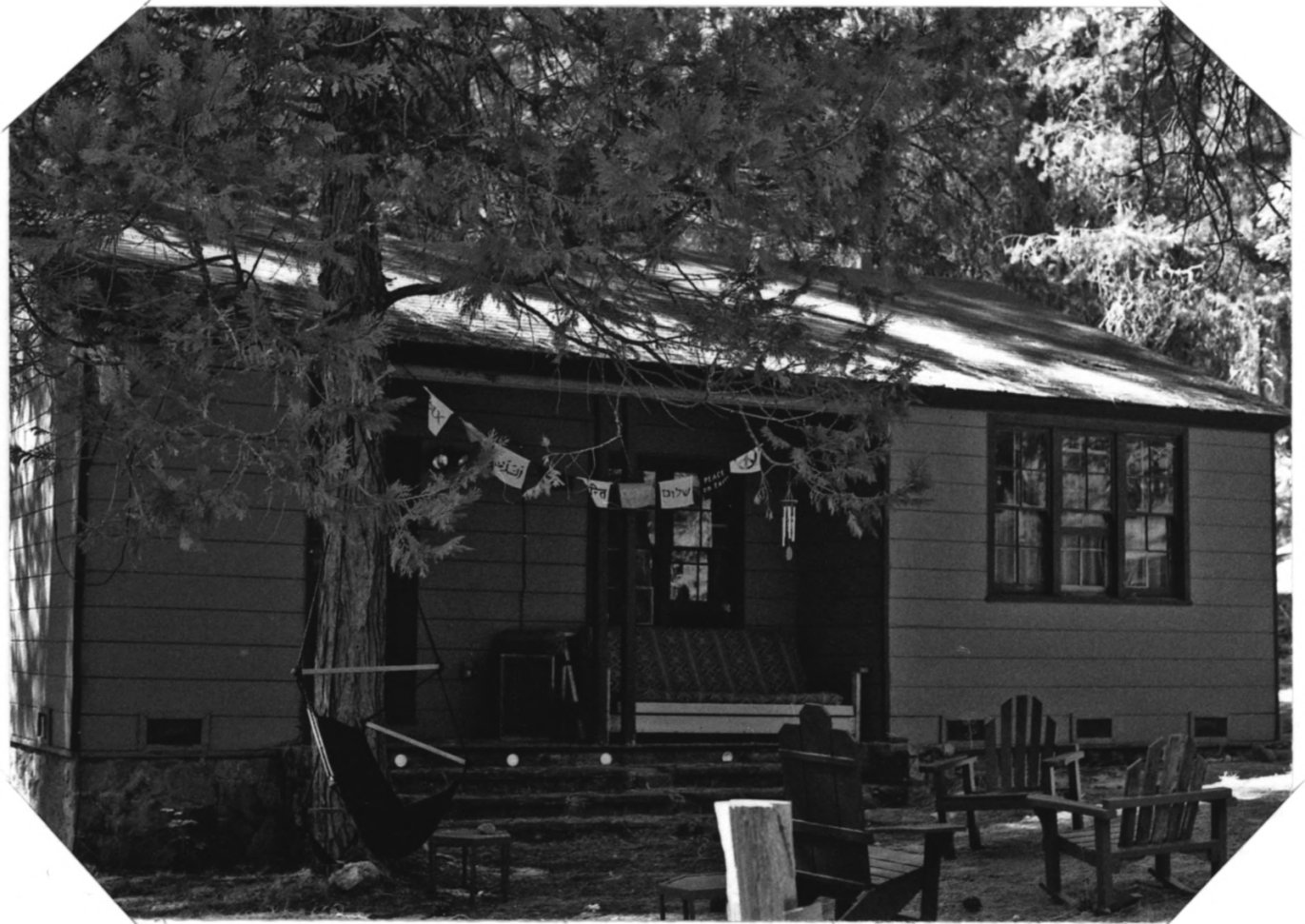
**National Register Of Historic Places
Continuation Sheet**

Section number: Contemporary Photographs

Page: 11 of 16

Stanislaus Branch, CF&RES
Name of Property

Tuolumne County, California
County and State



19 Laboratory, front. Building 1111. View toward east (90°).

United States Department of the Interior
National Park Service

National Register Of Historic Places Continuation Sheet

Section number: Contemporary Photographs

Page: 12 of 16

Stanislaus Branch, CF&RES
Name of Property

Tuolumne County, California
County and State



21 Laboratory, south gable end. Building 1111. View
toward northwest (280°).

**United States Department of the Interior
National Park Service**

**National Register Of Historic Places
Continuation Sheet**

Section number: Contemporary Photographs

Page: 13 of 16

Stanislaus Branch, CF&RES
Name of Property

Tuolumne County, California
County and State



22 Superintendent residence, east (front) eave wall and porch. Building 1018. View toward west (270°).

United States Department of the Interior
National Park Service

National Register Of Historic Places Continuation Sheet

Section number: Contemporary Photographs

Page: 14 of 16

Stanislaus Branch, CF&RES
Name of Property

Tuolumne County, California
County and State



**24 Cabin, south (front) eave wall and east gable end (oblique view).
Building 1218. View toward west (280°).**

United States Department of the Interior
National Park Service

National Register Of Historic Places
Continuation Sheet

Section number: Contemporary Photographs

Page: 15 of 16

Stanislaus Branch, CF&RES
Name of Property

Tuolumne County, California
County and State



27 Stone pump house south (front) and west gable end (oblique view).
Building 2614. View toward north (20°).

United States Department of the Interior
National Park Service

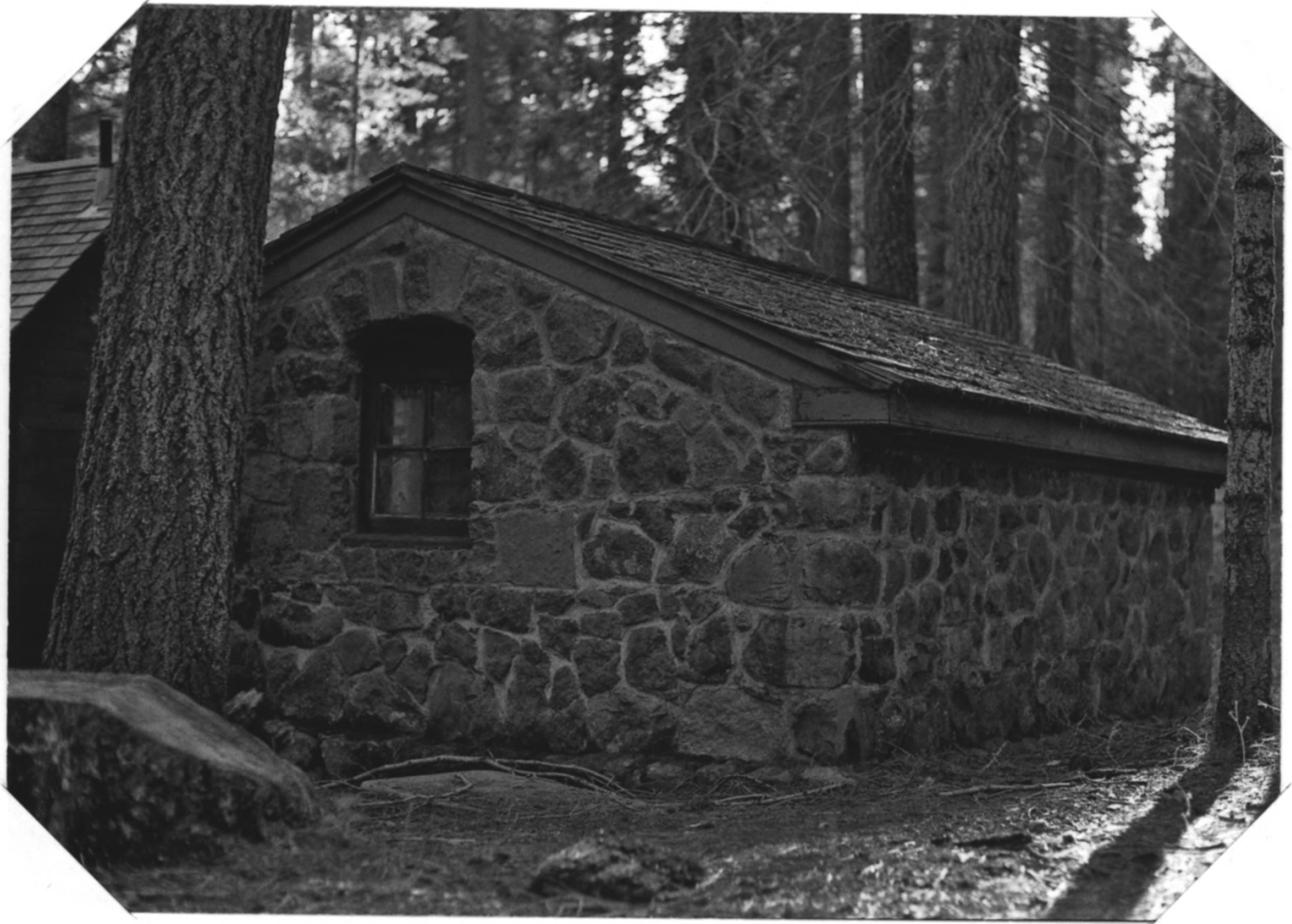
National Register Of Historic Places Continuation Sheet

Section number: Contemporary Photographs

Page: 16 of 16

Stanislaus Branch, CF&RES
Name of Property

Tuolumne County, California
County and State



28 Stone pump house east gable end and north (rear) eave wall (oblique view). Building 2614. View toward south (200°).

United States Department of the Interior
National Park Service

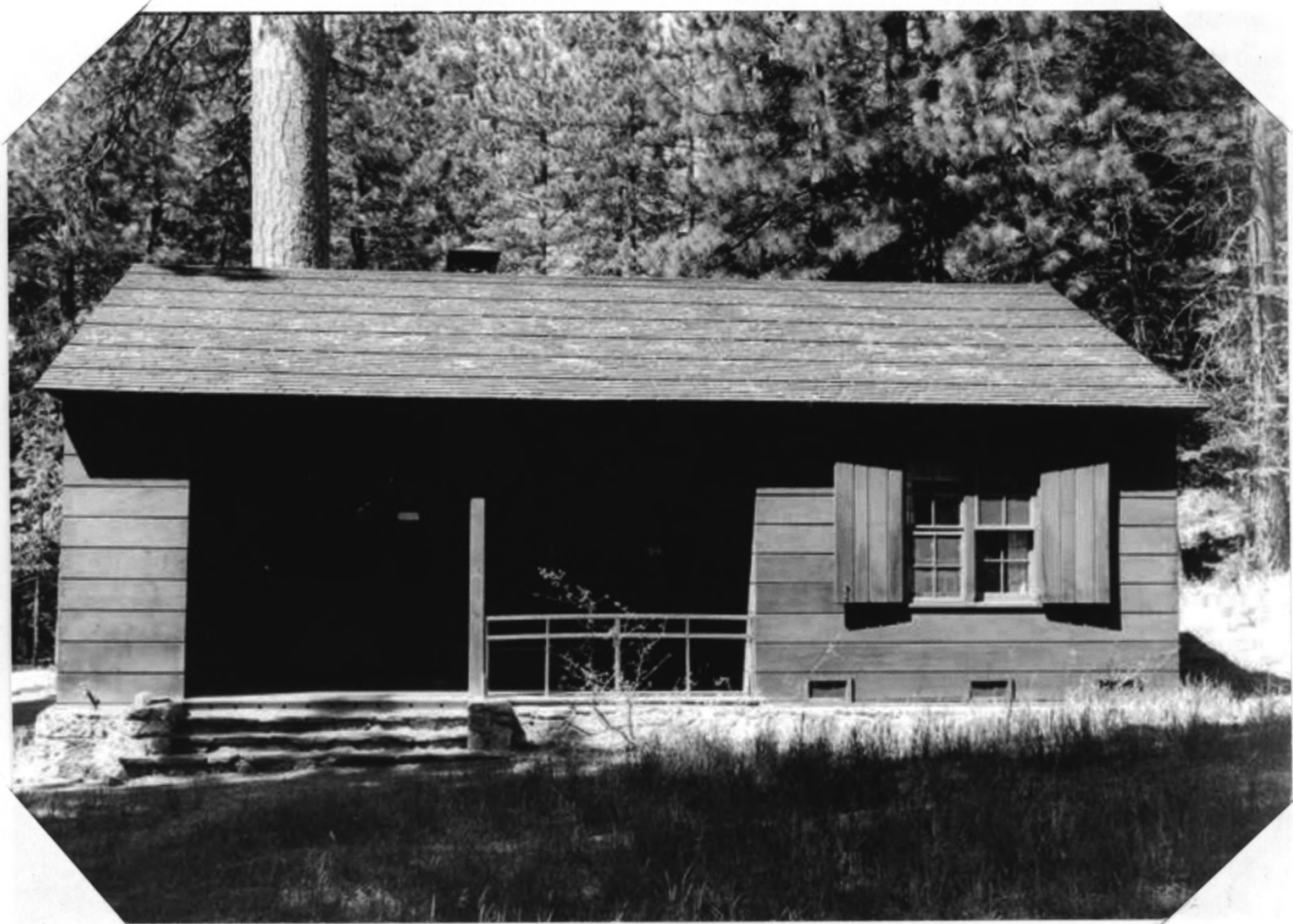
National Register Of Historic Places Continuation Sheet

Section number: Historic Photographs

Page: 1 of 9

Stanislaus Branch, CF&RES
Name of Property

Tuolumne County, California
County and State



"B" house, Superintendent residence, front façade, 1934. Building 1018.

United States Department of the Interior
National Park Service

National Register Of Historic Places Continuation Sheet

Section number: Historic Photographs

Page: 2 of 9

Stanislaus Branch, CF&RES
Name of Property

Tuolumne County, California
County and State



**Cabin (original laboratory) front façade, 1931.
Building 1218.**

United States Department of the Interior
National Park Service

National Register Of Historic Places
Continuation Sheet

Section number: Historic Photographs

Page: 3 of 9

Stanislaus Branch, CF&RES
Name of Property

Tuolumne County, California
County and State



New laboratory, front façade, 1936. Building 1111.
(Site of old office/laboratory, Building 1218.)

**United States Department of the Interior
National Park Service**

**National Register Of Historic Places
Continuation Sheet**

Section number: Historic Photographs

Page: 4 of 9

Stanislaus Branch, CF&RES
Name of Property

Tuolumne County, California
County and State



**Caretaker's residence, front façade, 1958.
Building 1110.**

United States Department of the Interior
National Park Service

National Register Of Historic Places Continuation Sheet

Section number: Historic Photographs

Page: 5 of 9

Stanislaus Branch, CF&RES
Name of Property

Tuolumne County, California
County and State



Dormitory, southwest (side) elevation, 1958. Building 1346.

United States Department of the Interior
National Park Service

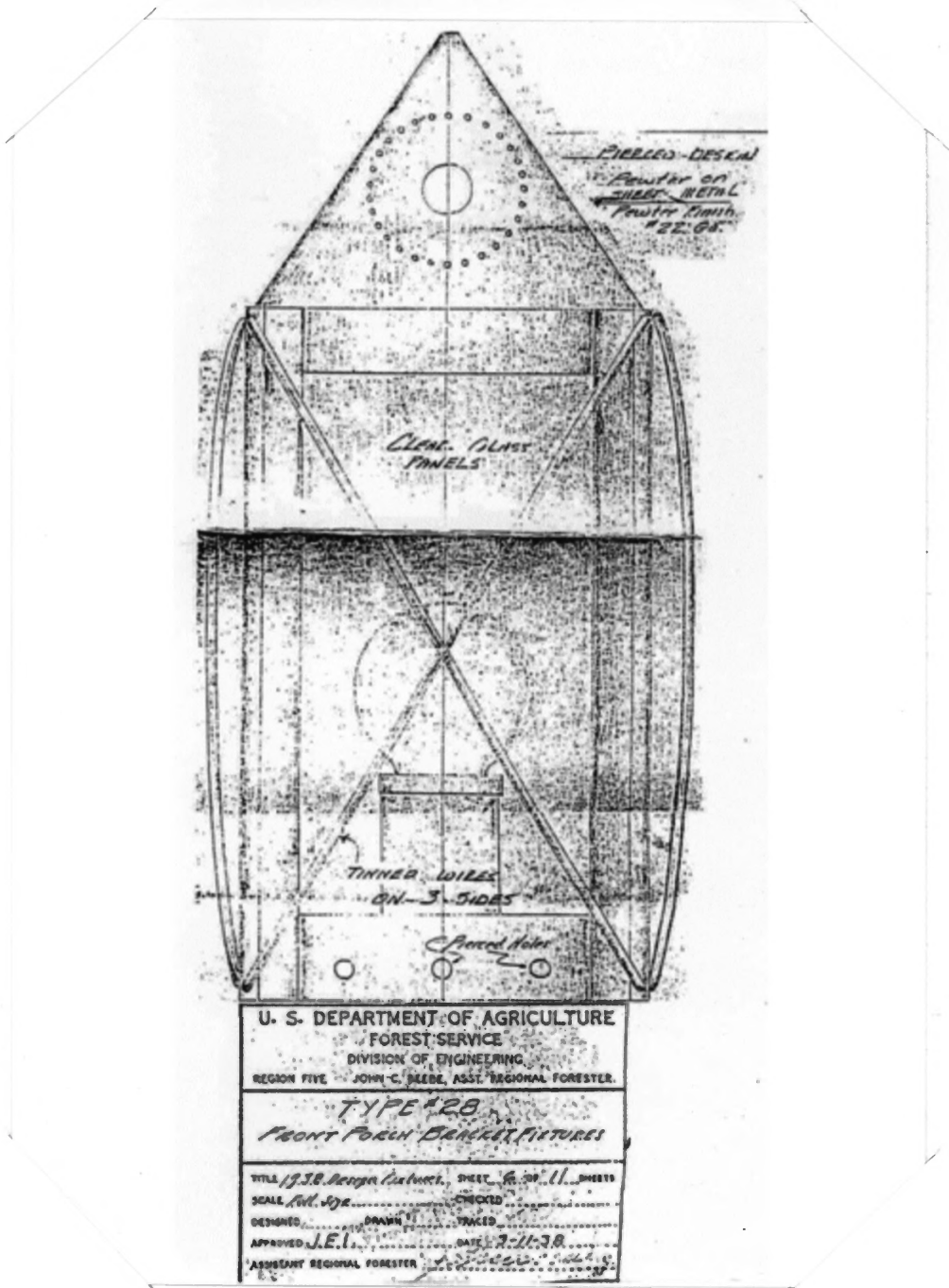
National Register Of Historic Places
Continuation Sheet

Section number: Historic Photographs

Page: 6 of 9

Stanislaus Branch, CF&RES
Name of Property

Tuolumne County, California
County and State



CCC-era plan for typical porch light fixture.

United States Department of the Interior
National Park Service

National Register Of Historic Places Continuation Sheet

Section number: Historic Photographs

Page: 7 of 9

Stanislaus Branch, CF&RES
Name of Property

Tuolumne County, California
County and State



**Civilian Conservation Corps Camp Strawberry,
approximately 1937.
Courtesy of James Jones, CCC enrollee.**

United States Department of the Interior
National Park Service

National Register Of Historic Places Continuation Sheet

Section number: Historic Photographs

Page: 8 of 9

Stanislaus Branch, CF&RES
Name of Property

Tuolumne County, California
County and State



United States Department of the Interior
National Park Service

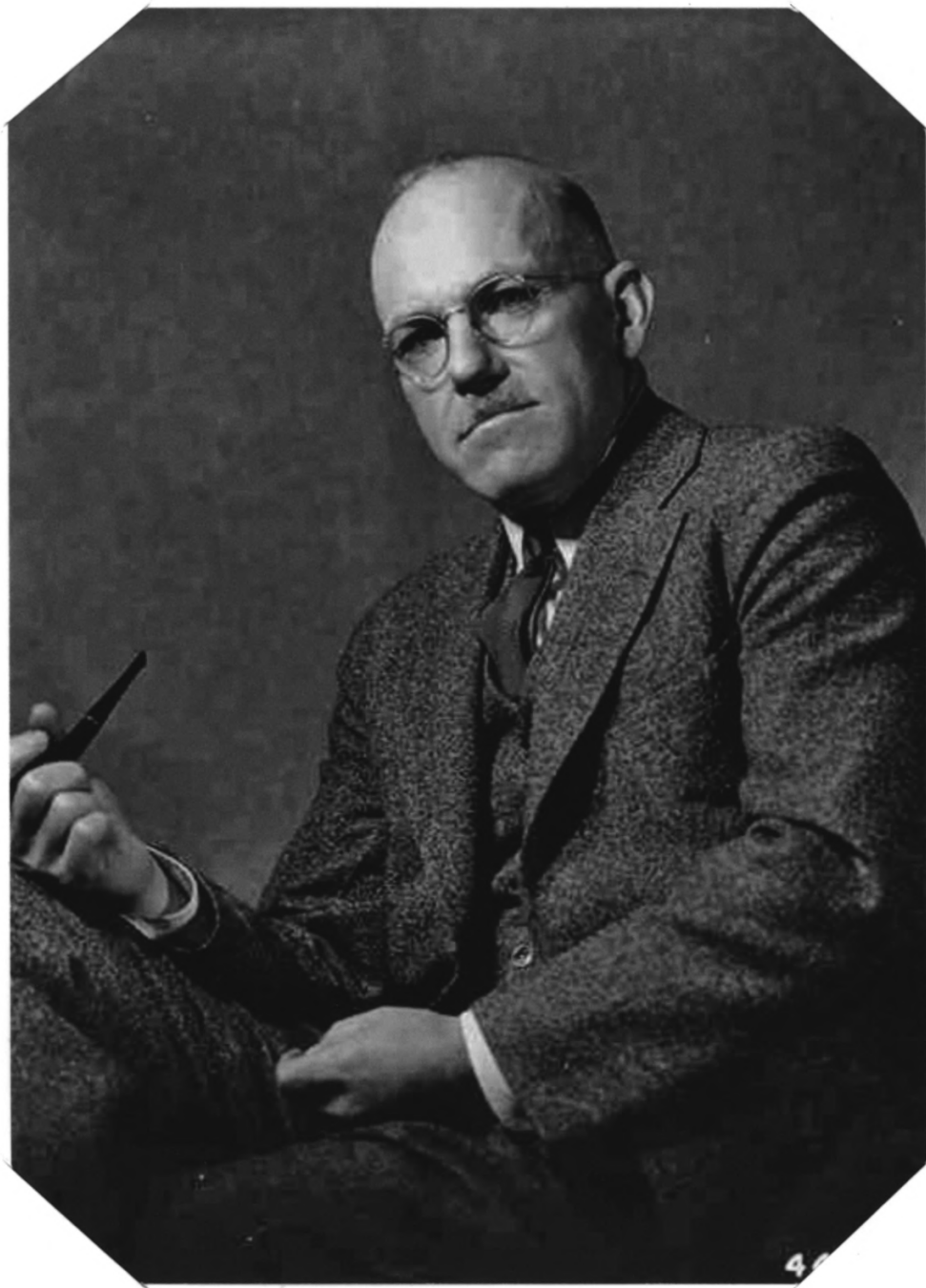
National Register Of Historic Places Continuation Sheet

Section number: Historic Photographs

Page: 9 of 9

Stanislaus Branch, CF&RES
Name of Property

Tuolumne County, California
County and State



Duncan Dunning, 1937.