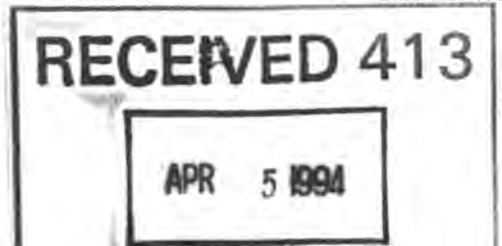


United States Department of the Interior
National Park Service

National Register of Historic Places
Registration Form



This form is for use in nominating or requesting determinations for individual properties and districts. See instructions in *How to Complete the National Register of Historic Places Registration Form* (National Register Bulletin 16A). Complete each item by marking "X" in the appropriate box or by entering the information requested. If an item does not apply to the property being documented, mark "N/A". For functions, architectural classification, materials, and areas of significance, enter only categories and subcategories from the instructions. Place additional entries and narrative items on continuation sheets (NPS Form 10-900a). Use a typewriter, word processor, or computer, to complete all items.

1. Name of Property

historic name Mill River Historic District

other names/site number Mill River Village

2. Location

street & number Roughly bounded by Main Street and River Church, Southfield, Clayton, School, and Hayes Hill Roads N/A not for publication

city or town New Marlborough N/A vicinity

state Massachusetts code MA county Berkshire code 003 zip code 01244

3. State/Federal Agency Certification

As the designated authority under the National Historic Preservation Act, as amended, I hereby certify that this nomination request for determination of eligibility meets the documentation standards for registering properties in the National Register of Historic Places and meets the procedural and professional requirements set forth in 36 CFR Part 60. In my opinion, the property meets does not meet the National Register criteria. I recommend that this property be considered significant nationally statewide locally. (See continuation sheet for additional comments.)

Judith B. McDonough 3/30/94
Signature of certifying official/Title Judith B. McDonough Date Executive Director
Massachusetts Historical Commission, State Historic Preservation Officer
State of Federal agency and bureau

In my opinion, the property meets does not meet the National Register criteria. (See continuation sheet for additional comments.)

Signature of certifying official/Title _____ Date _____

State or Federal agency and bureau _____

4. National Park Service Certification

I hereby certify that the property is:

- entered in the National Register.
 See continuation sheet.
- determined eligible for the National Register.
 See continuation sheet.
- determined not eligible for the National Register.
- removed from the National Register.
- other, (explain:)

Signature of the Keeper

Date of Action

Patrick W. Anders

5/17/94

Mill River Historic District
Name of Property

Berkshire County, MA
County and State

5. Classification

Ownership of Property

(Check as many boxes as apply)

- private
- public-local
- public-State
- public-Federal

Category of Property

(Check only one box)

- building(s)
- district
- site
- structure
- object

Number of Resources within Property

(Do not include previously listed resources in the count.)

Contributing	Noncontributing	
92	16	buildings
11		sites
	2	structures
		objects
103	18	Total

Name of related multiple property listing

(Enter "N/A" if property is not part of a multiple property listing.)

N/A

Number of contributing resources previously listed in the National Register

0

6. Function or Use

Historic Functions

(Enter categories from instructions)

AGRICULTURE: agricultural outbuilding
COMMERCE/TRADE: specialty store, professional
DOMESTIC: single dwelling, multiple dwelling
secondary structure, hotel
EDUCATION: school
GOVERNMENT: city hall, post office
INDUSTRY: manufacturing facility, storage
RELIGION: religious facility (church)

Current Functions

(Enter categories from instructions)

AGRICULTURE: agricultural outbuilding
COMMERCE: specialty store
DOMESTIC: single dwelling, multiple dwelling,
secondary structure
EDUCATION: school
GOVERNMENT: city hall, post office
RELIGION: religious facility (church)

7. Description

Architectural Classification

(Enter categories from instructions)

EARLY REPUBLIC: Federal;
MID 19TH CENTURY: Gothic Revival, Greek Revival
LATE VICTORIAN: Italianate, Queen Anne
LATE 19TH & EARLY 20TH CENTURY REVIVALS:
Classical Revival
NO STYLE

Materials

(Enter categories from instructions)

foundation STONE, BRICK
walls WOOD
BRICK
roof ASPHALT
other CONCRETE

Narrative Description

(Describe the historic and current condition of the property on one or more continuation sheets.)

United States Department of the Interior
National Park Service

National Register of Historic Places Continuation Sheet

Section number 7 Page 1

RECEIVED 413
APR 5 1994
INTERAGENCY RESOURCES DIVISION
HISTORIC DISTRICTS
NATIONAL PARK SERVICE
Mill River Historic District
New Marlborough (Berkshire County)
Massachusetts

7. DESCRIPTION

The Mill River Historic District is a linear village district extending one-and-one-half miles along the Konkapot River and the roads that follow the river valley. Its approximately 425 acres contain predominantly mid-nineteenth-century residential, institutional and commercial buildings, along with nineteenth-century grist-, saw-, and paper mill archaeological sites on the river. Mill River is one of five villages within the rural southern Berkshire County Town of New Marlborough. The village has historically served as the center of town government, and during the nineteenth century, it was the industrial center as well. Although Mill River lost its manufacturing prominence when the railroad bypassed it, and all mill buildings are gone, the rural village it created remains well preserved in its narrow river valley setting. The district contains a total of 103 contributing resources: 92 buildings, 11 sites including one cemetery that reflect its historic significance. The 16 noncontributing buildings are mostly modern garages, the 2 noncontributing structures are late 20th century concrete bridges over the Konkapot River.

The Konkapot River is a dominant feature of the village and the rural town of New Marlborough, which is dotted by evergreen-forest and underlain by rocky soil. The river drops 129 feet as it threads its way the one-and-one-half miles through Mill River Village. The river's industrial opportunity spawned eleven dams and mills in the nineteenth-century, eight of which are still visible today as archaeological sites within the district. The village's historic role as the town's civic and manufacturing center is reflected in the nodal character of the road pattern. Main Street is a continuation of the Mill River - Great Barrington Road to the north and the Mill River - Southfield Road to the south. It is joined (north to south) by School Road, Hayes Hill Road, River Road, and Church Road. The middle two roads intersect with Mill River - Clayton Road.

The boundaries of the district are defined by, and include, the Konkapot River, which forms the west boundary at the north end of the district and the east boundary at the south end of the district, and by historic properties lining the roads. The boundaries roughly correspond to the village as delineated in a nineteenth-century atlas [Beers 1876; Attachment A], extending from the Brewer saw mill site on the north to the J. Carroll & Co. lower paper mill site on the south.

(continued)

**United States Department of the Interior
National Park Service****National Register of Historic Places
Continuation Sheet****Mill River Historic District
New Marlborough (Berkshire County)
Massachusetts**Section number 7 Page 2

In the nineteenth-century, the land surrounding Mill River was open, cultivated agricultural and grazing land. While much land has reverted to forest, stone walls which marked field divisions remain in the sparsely populated hills around the village. A valley setting, concentration of buildings close to Main Street and the Konkapot River, and relatively high population set the district apart from surrounding lands. Lands immediately abutting the district are mostly wooded, with a mixture of open fields and woods beyond. The district retains a high degree of integrity in its individual buildings and survival as a historic unit. This is evidenced by comparison of its present condition with historic maps and with a fine collection of late nineteenth- and early twentieth-century photographs (Frank Sisson, photographer). The most striking losses are the mill structures and the elm trees that lined Main Road before the onslaught of Dutch Elm disease in the twentieth century. One small park exists, created in the late twentieth century by the local Conservation Commission around a mill site (G. Robbins Paper Mill, also known as the "Creamery") to the rear of the library.

Mill River is dominated by one- to two-and-one-half-story, wood-frame residential buildings, sheathed in wood clapboards and painted white with black shutters. Most were built in the mid-nineteenth century and designed in a restrained Greek Revival style as houses for mill owners and workers. A handful of late eighteenth-century houses, predating the major period of growth and later modified with Greek Revival design elements, and a few Italianate houses constructed in the second half of the nineteenth century complement the core of simple dwellings. The village possesses three relatively elaborate houses built for prominent citizens in the Gothic Revival, Italianate, and Queen Anne styles. Two Romanesque Revival style churches were built in the decade between 1860 and 1870. Civic and institutional architecture (town hall, library, school) of the nineteenth and early twentieth century also displays classical revival design ideals, simply rendered in wood or red brick. Nineteenth century commercial buildings include two former hotels, a small office, and several combination residence/shop buildings, one of which is still used as a general store.

The outstanding preservation and generally excellent maintenance of buildings in the district is largely due to the interest of private owners. One church has been converted to a residence, but the exterior remains essentially unaltered. At the present, approximately half the houses are owned by seasonal and weekend

(continued)

United States Department of the Interior
National Park Service

National Register of Historic Places
Continuation Sheet

Mill River Historic District
New Marlborough (Berkshire County)
Massachusetts

Section number 7 Page 3

residents, reflecting the influx of second homes and tourists to the southern Berkshire County region.

The eight visible mill foundation sites and dams along and across the river that were the key to the village's settlement have been identified and marked by the New Marlborough Historical Society. The Society conducts tours of the sites and maintains a collection of artifacts from many of the sites. Attempts by the Society to restore the Crosby-Robbins Mill site was unsuccessful due to inability to raise sufficient funds. The sites have suffered from the erosion impacts of repeated floods and winter ice flows, but the stone work remains of buildings, dams, and sluiceways and the vestiges of former mill ponds are present.

The Mill River Historic District contains few intrusions. With the exception of one barn recently altered for use as a residence, all the noncontributing resources are buildings constructed in the twentieth century after the end of the period of significance. They consist of a few modern ranch houses and numerous small garages.

Few buildings have been lost since the nineteenth century and none are known to have been moved. The major loss of historic fabric has been the mills, the last of which was dismantled during World War II. However, their sites are still visible and evocative of the active and productive village in the nineteenth century. They survive as archaeological sites with a high potential for study of Mill River's nineteenth century industrial history. Two additional archaeological sites have been identified based on historic maps, but have not been located. They are two houses no longer standing that belonged to prominent mill owners in the 1870s.

The following are descriptions of key and representative buildings, followed by representative archaeological sites, within the district. The order of presentation in each instance is roughly north to south.

The Chauncey Brewer or E. Rhoades House, School Road, ca. 1850 (Map 4/74A; MHC #23) is a small one-and-one-half story, end-gable Greek Revival house built as a residence for the Brewer saw mill operator. Clapboard and shaped shingle walls rise to a gabled roof, with frieze-band attic windows at the cornice. An asymmetrical front, kitchen ell, and porch complete the building.

(continued)

United States Department of the Interior
National Park ServiceNational Register of Historic Places
Continuation SheetMill River Historic District
New Marlborough (Berkshire County)
MassachusettsSection number 7 Page 4

The saw mill and mill pond were located close by on the same property.

The C. Hall House, School Road, ca. 1880 (Map 4/74; MHC #22; Photograph 11), is a substantial Queen Anne house, the finest example of this style in the district. Rising two-and-one-half stories to a cross gable roof with pedimented ends, the clapboarded and asymmetrically massed building has cut-away corners, palladian-inspired windows, lattice and stained glass windows, and a range of gabled porches across the front and along the south side. Also located on the property are a well preserved group of late nineteenth and early twentieth century farm outbuildings.

The G. G. Warner House (a.k.a. Field property), School Road, ca. 1835 (Map 4/30; MHC #25; Photograph 8), is a handsome two-and-one-half story Greek Revival house set with its gable end to the road. A symmetrical center entrance facade, heavy cornice, and corner boards treated as pilasters distinguish the house. It has secondary entrances on either side and an ell and porch at the rear adjacent to the river. The sheathing is asbestos shingle, but all trim remains.

The C. Rood House, School Road, ca. 1850 (Map 4/31; MHC #24), is the most picturesque house in the district. A small one-and-one-quarter story house, it exemplifies the Gothic Revival cottage form in its cross gable plan, steep roof, breaking gables topped with finials, pierced and sawn vergeboard, and porches.

The Mill River School, School Road, 1938 (Map 4/32; Photograph #8), is a tall one story Georgian Revival building constructed of red brick with cast concrete trim. Capped with a gable roof, the symmetrical rectangular blocky building has ranges of grouped windows on each long elevation and matching enclosed entrance ells on each short elevation. The school replaced an earlier structure at the same location, erected in the mid-nineteenth century.

The Immaculate Conception Roman Catholic Church, Main Street, 1866 (Map 17/11; MHC #34; Photograph 10), is the simpler of the two Romanesque Revival churches in Mill River and served the Irish Roman Catholic population when first constructed. It is a simple front gable, rectangular, clapboarded building, intersected by a square central entrance tower topped with a plain octagonal shingled spire. Relatively small-scale round

(continued)

United States Department of the Interior
National Park ServiceNational Register of Historic Places
Continuation SheetMill River Historic District
New Marlborough (Berkshire County)
MassachusettsSection number 7 Page 5

arch windows containing leaded stained glass are located on the front and sides and light the interior. The church occupies a prominent site on a high bluff overlooking Main Street and the river.

The Peter Davis Hotel, later Napoleon Shaker Store, Main Street, ca. 1825 (Map 17/12; MHC #35; Photograph 12), is a broad, clapboarded, two-and-one-half story Greek Revival building with a four-bay front under an end-gable pediment. Entrances are located on the front, within a later addition, and on the south side. It was built as a store for Napoleon Shaker and was used as a hotel in the 1870s. At the rear are a two-story ell and porch, and a freestanding barn. Several additions have modified, but not obscured the original massing: a one-story storefront addition to the facade, a narrow two-story extension of the north side, and an entrance porch on the south side. It has housed several business enterprises and currently contains apartments.

Sisson and Blodgett Drugstore, now Mill River Store, Main Street, 1875 (Map 17/14; MHC #44; Photographs 4 & 5), is a plain two-story, two-bay wide, front-gable building with a first floor storefront under an open porch. It is sheathed in clapboard and unadorned. From 1915 to the present it has served as Mill River's general store. The post office is also housed in the shop space.

The Sisson & Blodgett House or Keyes House, Main Street, ca. 1800 (Map 17/15; MHC #45; Photographs 2 & 5), is a finely detailed two-and-one-half story, clapboarded Greek Revival house set on a stone foundation. The three-bay by four-bay main block has a dentil cornice, paneled cornerboard pilasters and end gable pediments with horizontal attic windows. The entrance is recessed under a heavy flat entablature. Early one-story gable-roof ells with porches extend to the side and to the rear. A barn on the property has been remodelled as an art gallery. The house was the home of Lorrin Keyes, a state representative and senator in the 1880s and 1890s.

The A. Smith House, Main Street, 1850 (Map 17/18; MHC #42), is a small two-story, L-plan Italianate house with clapboarded walls rising to a flat roof. It has a projecting bay window and ornate iron work supports on the side ell porch.

(continued)

United States Department of the Interior
National Park Service

National Register of Historic Places
Continuation Sheet

Mill River Historic District
New Marlborough (Berkshire County)
Massachusetts

Section number 7 Page 6

The diminutive Mrs. H. Wolfe Millinery, later Maxwell Doctor Office, Main Street, 1845 (Map 17/18A; MHC #41), of wood frame construction with a three-bay front under a gable roof has been used as a small shop and office.

New Marlborough Public Library, Main Street, 1919, (Map 17/16; MHC #43; Photograph 15), was constructed with Andrew Carnegie library funds. The one-story Classical Revival style building of buff-red brick has a three-bay temple front and a broad cornice. The four cast concrete fluted columns were created by Marcus Rodgers, the former editor of the Berkshire Courier and a native of Mill River. The central entrance is set in a round-arch opening surmounted by a fanlight, a motif repeated on the rear elevation. A fanlight in each stuccoed end pediment lights the attic. Window size and placement varies. Surrounds are cast concrete lug sills and flat lintels.

The H. Rogers Hotel, Main Street, ca. 1795 (Map 17/10; MHC #46; Photograph 13) is a seven-bay long, gable-roof building located across the road from Town Hall. With its clapboard walls rising two-and-one-half stories, the building's most notable characteristics are the repetition of uniform window openings with six-over-six sash, several simple entrances, and a full one-story porch along two sides. It's original appearance is not known, but it may have been enlarged in the mid-nineteenth century when used as a hotel.

The former United Congregational Church, Mill River - Southfield Road, 1870 (Map 17/47; MHC #51; Photograph 9) was built by Captain James Carroll, one of the paper mill owners. Although converted to a private residence in 1976, the building's exterior remains little changed. It is a tall one-story rectangular building, three bays by five bays, with an end gable roof and an intersecting central entrance tower. Romanesque Revival style design elements appear in the double-arch tracery and round-arch hood molds with pendants on the tall windows. The six-panelled door is set in an arched surround echoing the windows and is surmounted by a drip molded frieze. The tower rises from the gable roof in three stages: a square arcaded belfry with chamfered corners, a short octagonal section, and a tall octagonal spire with louvered openings.

(continued)

United States Department of the Interior
National Park ServiceNational Register of Historic Places
Continuation SheetMill River Historic District
New Marlborough (Berkshire County)
MassachusettsSection number 7 Page 7

The New Marlborough Town Hall, Mill River - Southfield Road, 1871; rebuilt 1909 (Map 17/46; MHC #49; Photographs 16), was originally constructed in the Greek Revival style and rebuilt in 1909 following a fire with a modest Colonial Revival entrance. The one-and-one-half story, gable-roof, clapboarded building is three bays by six bays and is simply detailed. The central entrance is recessed in a segmental arch opening; the door is paneled and glazed, with a fanlight above. Windows on the first floor are tall twelve-over-twelve sash. The end-gable attic windows are widely spaced six-over-six sash, with a small arched louvered opening at the gable peak. The basement is exposed at full height on the west side and rear.

The J.W. Adams House/ E. & J.W. Adams Meat Market (a.k.a. Stanton-Nourse House), Main Street, ca. 1795 (Map 17/40; MHC #47) is a two-and-one-half story, side-gable Greek Revival house with an asymmetrical six-bay facade, corner pilasters, and two lateral wings. The entrance is recessed and flanked by sidelights. The west wing has been modified with the addition of an enclosed porch. The house was probably modified to its present form in the mid-nineteenth century when it was used as a boarding house for paper mill workers. In the late nineteenth and early twentieth centuries, a meat market occupied part of the building.

The C. Shean House, Clayton Road, 1850 (Map 17/42; MHC #54), is a one-and-one-half story, clapboarded Greek Revival house with flushboard sheathed pediments and marble foundation facing. The entrance has a heavy flat entablature, and frieze windows light the attic. An ell extends to the south. The house was built as a wedding present in 1850 for the son of Captain Warren Wheeler, one of the paper mill owners. In 1894, it was purchased by Nellie Wrinkle for \$125.00. She was a descendant of Timothy Wrinkle, the first Irishman to locate in Mill River to work in the paper mills. The property remains in Wrinkle-family ownership.

The T.G. Carroll House, Clayton Road, ca. 1850 (Map 4/72; MHC #56; Photograph 14), is the district's most elaborate Italianate house, although a fairly simple rendition of the style. It has a cruciform plan and rises two stories to a nearly flat roof with attic frieze-band windows. The three-bay facade has tall first story windows and an end-bay entrance under a porch with carved embellishments above the plain support posts. Carved decoration is also applied to the high lintels of the second story windows. The remaining elevations are more simply treated. The house was

(continued)

United States Department of the Interior
National Park ServiceNational Register of Historic Places
Continuation SheetMill River Historic District
New Marlborough (Berkshire County)
MassachusettsSection number 7 Page 8

built by a member of the Carroll family who owned two paper mills nearby.

Scattered in several locations in the village, but found in concentration along River Road and Clayton Road, are small single family worker's cottages erected in the 1850s and 1860s. They are similar in form: one-and-one-half story in height, with flank gable roof, attic frieze windows, and a center-entrance, three-bay facade. Some appear to have been owned by the Carroll paper mill, while others were privately owned. Examples of these residences include Map 17/34, 17/35 (MHC #53), 17/36, 17/37, 7/29, 7/14 (MHC #57), and 7/30.

Archaeological Description

While no prehistoric sites are currently recorded in the district, locational characteristics of the area indicate sites should be present. One prehistoric site is recorded in the general area (within one mile). Environmental characteristics of the river valley setting of the Mill River include several locations where well drained level to moderately sloping terraces in close proximity to the river indicate favorable prehistoric site locations. The district is also underreported archaeologically. Given the above information and the size of the district (approximately 425 acres) a high potential exists for the recovery of Native American sites in areas not impacted by historic period development.

A high potential also exists for the recovery of significant historic period resources in the district. Among these, industrial remains including eleven mills, eight of which have been identified, are some of the more visible remains in the area.

The Brewer Saw Mill, off School Road, built between 1764 and 1814, (Map 4/74A) was the northern-most mill in the district and was the last in operation. It's water power machinery was dismantled for scrap during World War II, but it operated on a gasoline engine until 1959 and was torn down in 1964. The site consists of the mill pond, stone dam, and stone foundation of the mill building on the east side of the river. The early history is obscure, but it had several owners prior to Edward Rhoades who in 1876 sold it to Chauncey C. S. Brewer. The mill passed to Edwin Stanton, a son-in-law of Brewer, and then to its present owner, Homer Stanton, in 1960. In the course of its history, it

(continued)

United States Department of the Interior
National Park ServiceNational Register of Historic Places
Continuation SheetMill River Historic District
New Marlborough (Berkshire County)
MassachusettsSection number 7 Page 9

housed blacksmith shops, cider presses, and lathe making and wood shingle machinery, in addition to its primary function as a saw mill.

The Blackmer - Alexander Grist Mill Site, also known as Nahum Ward Grist Mill Site, off School Road, 1744 (Map 4/35; Photograph 7), is one of the oldest industrial sites in New Marlborough. Located a few hundred feet up stream from the Mill River - Great Barrington Road bridge, the site contains the dry laid stone foundation remains of the mill building on the east river bank.

Historic photographs show a small, deteriorated, gable roofed and clapboarded wood-frame building set on the high foundation. A low riffle of one or two stone courses in the river just above the mill is the remnants of timber crib and stone dam that impounded water to power the mill. Constructed in 1744, the mill passed through a succession of owners. Between about 1800 and 1835, it was owned by Moses Spaulding, followed, from about 1835 to 1856, by Dan Adams, a prominent man of the time. In 1856, it was owned and operated by Alfred H. Alexander until 1890, when activity ceased. A stone grinding wheel associated with the mill has been retrieved from the river bed and is in the possession of the New Marlborough Historical Society.

The Ward - Sisson Saw Mill Site, off Main Road, 1742 (Map 4/38), is most likely the oldest industrial site in New Marlborough. It stood just below the Mill River - Great Barrington Road bridge on a natural fall of 10 to 12 feet. Depicted in historic photographs, a one- to two story, wood-frame building stood on the east bank of the river adjacent to a stone and timber crib dam which raised the falls to 18 to 20 feet. Nahum Ward constructed and operated the saw and grist mill under a contract with the town proprietors dated 1739. The Sisson family acquired the mill in 1857 and continues to own the property. In the 1870s, it functioned as a saw, planing, and cheese box mill under H. D. Sisson (Beers map, 1876). The mill operated until World War I, and was torn down in the 1920s. In 1927, Harry D. Sisson, representative to the Massachusetts General Court from 1929 to 1939, built a small summer house on the mill site remains (Sisson House, 1927, Map 4/38). Portions of the mill's stone foundation and dam remnants are visible along the river bank and in the river bed.

(continued)

United States Department of the Interior
National Park ServiceNational Register of Historic Places
Continuation SheetMill River Historic District
New Marlborough (Berkshire County)
MassachusettsSection number 7 Page 10

The Crosby - Robbins Paper Mill Site, off Hayes Hill Road, 1836 (Map 17/23; Photograph 6), is the most dramatic and one of the two best preserved industrial sites within the Mill River Historic District (see Lower J. Carroll & Co. Paper Mill Site described below). Located just above (north of) the Hayes Hill Road bridge, the dam, tail race channel, and mill foundations are finely constructed of cut stone blocks dry laid in regular courses, of which only a few upper courses are missing. The dam was 20 feet high and held impounded water in a broad pond still visible as a low area extending out from the present-day river banks. The complex comprised of three main structures, including the two-and-one-half story wood-frame machine room with the rag room located in the basement, on the west side of the river, and the finishing mill on the east side of the river. According to oral history, the mill was powered by a horizontal water wheel, vertical shaft, and leather belt system. The mill was the "upper mill" of several operated by Robbins and continued to be used until at least the end of the nineteenth century.

The Upper G. Robbins Paper Mill Site, also known as the "Creamery", off River Road, 1836 (Map 17/17 & 17/30B; Photograph 3), was the first paper mill at Mill River, erected in 1836 by Warren Wheeler and Noah Gibson. It had a succession of nine owners, including G. Robbins in the 1870s, before it ceased operation about 1880. The mill employed 30 to 40 hands in the manufacture of fine writing papers. In 1898, a dairy creamery was constructed at the same location, giving the site its more commonly used current name. Today, remains of the stone dam are visible. This was one of three paper mills operated by Mr. Robbins, including the Crosby - Robbins Paper Mill described above, and the Lower G. H. Robbins Paper Mill Site (off Main Street, ca. 1850 Map 17/40). A few courses of stone work at a bend in the river bed mark the site of the latter mill, which stood on the east side of the river in the present-day parking lot of Ormsbee's Garage (Main Street, 1939, Map 17/40).

The Lower J. Carroll & Co. Paper Mill Site, off Clayton Road, ca. 1873 (Map 7/26 & 7/25; Photograph 1), was the second and larger of two paper mills built by John Carroll in Mill River. The earlier mill (Upper J. Carroll & Co. Paper Mill Site, off River Road, ca. 1840s; 1856; Map 17/53) originally made straw wrapping paper beginning in the 1840s. In 1856, Carroll purchased rights to manufacture white printing paper from rye straw, the second mill in the country to do so. Scattered stones of buildings and dam mark this site today. About 1873, Carroll entered a

(continued)

8. Statement of Significance

Applicable National Register Criteria

(Mark "x" in one or more boxes for the criteria qualifying the property for National Register listing.)

- A** Property is associated with events that have made a significant contribution to the broad patterns of our history.
- B** Property is associated with the lives of persons significant in our past.
- C** Property embodies the distinctive characteristics of a type, period, or method of construction or represents the work of a master, or possesses high artistic values, or represents a significant and distinguishable entity whose components lack individual distinction.
- D** Property has yielded, or is likely to yield, information important in prehistory or history.

Criteria Considerations

(Mark "x" in all the boxes that apply.)

Property is:

- A** owned by a religious institution or used for religious purposes.
- B** removed from its original location.
- C** a birthplace or grave.
- D** a cemetery.
- E** a reconstructed building, object, or structure.
- F** a commemorative property.
- G** less than 50 years of age or achieved significance within the past 50 years.

Areas of Significance

(Enter categories from instructions)

- ARCHITECTURE
- ARCHAEOLOGY (Historic)
- EXPLORATION/SETTLEMENT
- INDUSTRY
- POLITICS/ GOVERNMENT

Period of Significance

1742 to ca. 1942

Significant Dates

- 1742
- 1836
- 1873

Significant Person

(Complete if Criterion B is marked above)

N/A

Cultural Affiliation

N/A

Architect/Builder

Narrative Statement of Significance

(Explain the significance of the property on one or more continuation sheets.)

9. Major Bibliographical References

Bibliography

(Cite the books, articles, and other sources used in preparing this form on one or more continuation sheets.)

Previous documentation on file (NPS):

- preliminary determination of individual listing (36 CFR 67) has been requested
- previously listed in the National Register
- previously determined eligible by the National Register
- designated a National Historic Landmark
- recorded by Historic American Buildings Survey # _____
- recorded by Historic American Engineering Record # _____

Primary location of additional data:

- State Historic Preservation Office
- Other State agency
- Federal agency
- Local government
- University
- Other

Name of repository:

Massachusetts Historical Commission

Mill River Historic District

Berkshire County, MA
County and State

Name of Property

10. Geographical Data

Acreage of Property approximately 425 acres

UTM References

(Place additional UTM references on a continuation sheet.)

1	1 8	6 4 3 6 0 0	4 6 6 4 6 0 0
	Zone	Easting	Northing
2	1 8	6 4 3 4 6 0	4 6 6 4 3 6 0

3	1 8	6 4 3 3 4 0	4 6 6 4 4 2 0
	Zone	Easting	Northing
4	1 8	6 4 3 1 2 0	4 6 6 4 2 6 0

See continuation sheet

Verbal Boundary Description

(Describe the boundaries of the property on a continuation sheet.)

Boundary Justification

(Explain why the boundaries were selected on a continuation sheet.)

11. Form Prepared By

New Marlborough Historical Commission & Virginia H. Adams, NR edit consultant
name/title with Betsy Friedberg, NR Director, MHC

organization Massachusetts Historical Commission date March 1994

street & number 80 Boylston Street telephone (617) 727-8470

city or town Boston state MA zip code 02116

Additional Documentation

Submit the following items with the completed form:

Continuation Sheets

Maps

A **USGS map** (7.5 or 15 minute series) indicating the property's location.

A **Sketch map** for historic districts and properties having large acreage or numerous resources.

Photographs

Representative **black and white photographs** of the property.

Additional items

(Check with the SHPO or FPO for any additional items)

Property Owner

(Complete this item at the request of SHPO or FPO.)

name Multiple

street & number telephone

city or town state zip code

Paperwork Reduction Act Statement: This information is being collected for applications to the National Register of Historic Places to nominate properties for listing or determine eligibility for listing, to list properties, and to amend existing listings. Response to this request is required to obtain a benefit in accordance with the National Historic Preservation Act, as amended (16 U.S.C. 470 et seq.).

Estimated Burden Statement: Public reporting burden for this form is estimated to average 18.1 hours per response including time for reviewing instructions, gathering and maintaining data, and completing and reviewing the form. Direct comments regarding this burden estimate or any aspect of this form to the Chief, Administrative Services Division, National Park Service, P.O. Box 37127, Washington, DC 20013-7127; and the Office of Management and Budget, Paperwork Reductions Projects (1024-0018), Washington, DC 20503.

United States Department of the Interior
National Park ServiceNational Register of Historic Places
Continuation SheetMill River Historic District
New Marlborough (Berkshire County)
MassachusettsSection number 7, 8 Page 11, 1

partnership with James Goodwin and constructed a larger mill downstream. The Lower Carroll Mill site is comprised of an enormous dry laid, cut head race on the east side of the river leading to the mill, which was also on the east side of the river. Gate mechanisms in the dam controlled the power flow. The dam, the long head race channel, the mill foundations, and a shorter tail race channel all survive in relatively good condition today.

In complement to the mill sites, the district also has high potential for the presence of eighteenth and nineteenth-century residential archaeological sites. These include a few known residences that are no longer standing, such as the John Carroll House Site (Map 17/41) and the E. Adams House Site (Map 4/62). The location of a ca. 1738 Ward log cabin is also reported on the north side of the river near its deepest and widest falls. Structural remains may also survive from the 1871 Town Hall on Southfield Road which burned and was rebuilt in 1909.

Occupational related features (trash pits, privies, wells) are also expected at residential and commercial archaeological sites and in association with structures still extant. These resources could range from small trash deposits at residential homes and smaller industries like blacksmith shops to large refuse areas associated with mills or, municipal trash disposal. Mill related refuse was also commonly used to fill old mill locations. Unmarked graves are also possible at the Old Mill River Cemetery (Map 4/29) located on School Road where the earliest stone dates to 1758.

(end)

8. STATEMENT OF SIGNIFICANCE

The Mill River Historic District is significant as the location of New Marlborough's first settlement and mill, and as an historically prominent nineteenth century local manufacturing center, town center, and residential/commercial village. The period of significance extends from 1742 when the first mill was built to ca. 1942 when the last paper mill closed. The sturdy buildings within the village are a good collective example of rural conservative nineteenth-century architecture and reflect the rise and decline of Mill River's vitality from the

(continued)

United States Department of the Interior
National Park Service

National Register of Historic Places
Continuation Sheet

Mill River Historic District
New Marlborough (Berkshire County)
Massachusetts

Section number 8 Page 2

mid-eighteenth century to the mid-nineteenth century. The well preserved remains of at least eight historic mills spanning 200 years of occupation provide a valuable archaeological record worthy of preservation and study. The Mill River Historic District retains integrity of location, design, setting, materials, workmanship, feeling, and association. It is significant at the local level in the areas of architecture, archaeology (historic), exploration / settlement, industry, and politics / government and meets Criteria A, C, and D of the National Register of Historic Places.

Mill River is one of five villages in the Town of New Marlborough. This western section of the Massachusetts Bay Colony around the Hoosac Range in Berkshire County was opened for settlement with completion of the Westfield to Sheffield Road in 1735. To encourage settlement in the remote hilly area, four townships were surveyed and laid out in 1737. Designated Townships No. 1, 2, 3, & 4, they later became Tyringham, New Marlborough, Sandisfield, and Becket.

The Konkapot River, also known as the Iron Works River, flows roughly north to south through New Marlborough. Its water power potential attracted early settlers. Later, in the nineteenth century, the river and the abundant woods of the region encouraged the establishment of the paper industry, a major force in the economies of Mill River and of Berkshire County.

On August 25, 1737, Nahum Ward of Shrewsbury was empowered to assemble grantees or proprietors of Township No. 2 (New Marlborough) to choose a moderator, clerk, and committee to allot and divide lands. Many of the original settlers were from the town of Marlborough in eastern Massachusetts. They paid 1200 pounds to the committee of the Court for surveying and other charges and for purchase of land from the Native Americans.

Intent on planning the settlement and development of their lands to the west, the group contracted with Nahum Ward to construct a grist mill and saw mill in the Iron Works River. Ward built a cabin on the west side of the river near its deepest and widest falls, and by 1742, a saw mill had been constructed on the east side of the river downstream of his house (Map 4/38). Ward promptly sold his New Marlborough interests to Elias Keyes. Keyes in turn subcontracted to Joseph Blackmer to erect the grist mill, for which construction began in 1744 (Map 4/35).

(continued)

**United States Department of the Interior
National Park Service****National Register of Historic Places
Continuation Sheet****Mill River Historic District
New Marlborough (Berkshire County)
Massachusetts**Section number 8 Page 3

The first settler, Benjamin Wheeler, arrived in New Marlborough in 1739, followed in 1740 by his family. As settlement increased, additional mills were constructed on the steepest half-mile stretch of river in the north section of the Mill River Historic District. Land along the river was cleared to provide wood for construction, heating, and cooking, as well as to open fields for growing crops and grazing animals. When Township No. 2 had reached its projected population of 60 families, it was organized on June 15, 1740 as the District of New Marlborough. The town incorporated in 1756.

The heavily forested region furnished material not only for building, but also for mill machinery. The water wheels, pulleys, bearings, pinions, and gears that powered the mills were all fashioned from arborvitae from the local forests. Saw blades and shafts were of iron, brought overland from Marlborough, and possibly later manufactured in the region by local iron works. Log jams or cribs built against natural outcroppings and laid stone in the river raised the height of the falls to as much as 20 feet, generating up to 75 horse power.

By 1750, an iron works and forge (location not known) for manufacturing pig iron was established below the saw mill on the east river bank. The generation of the charcoal burned to sustain required high temperatures utilized the woodlands surrounding Mill River and afforded many farmers additional cash income.

In 1790, Ebenezer Hall established a fulling mill (location not known) for processing home spun wool cloth on a site across the river from the iron works. Water power was supplied from the Ward saw mill dam via a sluiceway to the fulling mill. The process used a soft clay, known as "Fuller's Earth", to remove oil and grease, after which the cloth was "fulled" or thickened. It is said to have been the first mill of its kind in Berkshire County and the second in Massachusetts.

Little remains of the eighteenth century settlement of Mill River. All the mills are gone, and only a few houses remain. They were built at the end of the century and mostly modified in the Greek Revival style in the nineteenth century. This important period of early settlement is recorded in the archaeological remains of the industrial and residential sites scattered in the district. The fabric of Mill River today reflects its nineteenth century era of expansion, the period of

(continued)

**United States Department of the Interior
National Park Service**

**National Register of Historic Places
Continuation Sheet**

**Mill River Historic District
New Marlborough (Berkshire County)
Massachusetts**

Section number 8 Page 4

the village's greatest growth.

To realize the power available from the Konkapot River, which has a total fall of 129 feet in the one-and-one-half miles through Mill River, some eleven dams were built with individual falls from seven to 23 feet in height. All but one of the nineteenth century mills were situated downstream from the pioneer mills, with the exception of the Brewer Saw Mill (Map 4/74A).

By the second quarter of the nineteenth century, industry began to transform Mill River from a quiet agricultural hamlet to a more bustling industrial village. The advent of new mills oriented to manufacturing paper products for shipment and sale, rather than to serving the immediate needs of the local farming population spurred construction of new houses, commercial buildings, and churches. As the population expanded, its make up changed, with an influx of Irish-born immigrants who arrived beginning about 1830 to work in the mills. Despite these changes, the village retained its isolated rural character.

The natural resources within and surrounding Mill River -- the narrow swift Konkapot River, the abundance of wood, and the fertile agricultural lands -- that had fostered initial eighteenth century settlement drew the paper industry in the nineteenth century. The village derives its name not from the Konkapot River itself, but from the concentration of mills along the river's banks. It was known as Mill River by 1876, and probably earlier.

Although mechanical power to operate the paper mills came from water wheels or water turbines, steam heat was required to dry the paper. Most likely this came from wood-fired boilers, as no railroads existed to import coal cheaply. Supply of the fuel needed to run the boilers again tapped the local forests and provided a source of income for area farmers.

The first paper mill at Mill River was established in 1836 by Warren Wheeler and Noah Gibson (Upper G. Robbins Paper Mill Site, also known as the "Creamery", Map 17/17 & 17/30B). At about the same time, John Carroll built a small straw wrapping paper mill on the privilege below Wheeler and Gibson (Upper J. Carroll & Co. Paper Mill Site, Map 17/53). In 1856, he made additions and improvements to manufacture writing paper, but in 1860 abandoned it for the manufacture of printing paper from bleached straw. This was the second mill in the country to make white paper from

(continued)

United States Department of the Interior
National Park ServiceNational Register of Historic Places
Continuation SheetMill River Historic District
New Marlborough (Berkshire County)
MassachusettsSection number 8 Page 5

rye straw, and the paper was used by the New York Times. The straw was most likely grown by farmers around Mill River. In 1873, Carroll entered into partnership with James Goodwin and constructed a larger printing paper mill downstream (Lower J. Carroll & Co. Paper Mill Site, Map 7/26 & 7/25). In 1877, Goodwin became sole proprietor of the mill under the Berkshire Paper Company. At its height of production, it manufactured three tons of paper per day.

By the mid-1870s, Mill River had at least five paper mills producing paper for markets all over the country and abroad. The population of New Marlborough peaked in 1875 with 2,037 residents; separate figures for Mill River are not available, but the village contained approximately 50 dwellings. Mill River bustled as the center of New Marlborough's industrial economy and its town government. A new town hall was constructed at the central crossroads of the village (Map 17/46, MHC 49). Two hotels operated to serve sales agents and others passing through town (Map 17/12, MHC #35; Map 17/10, MHC #46). A small commercial concentration developed at the center of the village with a general store, a drug store, a millinery, shoe shop, doctor's office, and meat market. One of the mill owners, John Carroll, made possible the construction of a Congregational Church to serve the local Protestant population (Map 17/47, MHC #51). At about the same time, the increasing Irish population spurred construction of a Roman Catholic Church, the second oldest remaining Catholic Church in Berkshire County (Map 17/11, MHC #34). The first Catholic masses were held in private homes beginning in 1841, and the church was completed in 1866.

Supplementing the core of late eighteenth century dwellings, new houses built between about 1850 and 1870 ranged from simple workers' cottages, to sturdy middle class houses, to a few more high style residences erected for the village's most prominent citizens. The clean lines and classical simplicity of the Greek Revival style with its idealistic associations as the proper architecture of the new American republic was the most popular.

The buildings in Mill River are typically conservative and modest in conception. Although simple brackets and projecting bays, indicators of Italianate influences, appear on a few houses; with few exceptions, styles emerging by the 1870s had little audience in Mill River. The handful of houses that represent more sophisticated taste in the Italianate, Gothic Revival, and Queen Anne styles were built for the more wealthy residents. As a

(continued)

United States Department of the Interior
National Park Service

National Register of Historic Places
Continuation Sheet

Mill River Historic District
New Marlborough (Berkshire County)
Massachusetts

Section number 8 Page 6

group, the intact concentration of largely unaltered nineteenth century buildings in Mill River provide an excellent record of the village's history and valuable representative example of the characteristic architectural forms in rural western Massachusetts.

The paper industry in Mill River survived for only one half a century, pushed into decline at the end of the century by rising transportation costs and increased competition. Newer and larger mills closer to efficient transport facilities were being erected in other areas of Berkshire County, drawing both business and workers from the Mill River mills. Although the need for rail transportation had been recognized and a survey made in 1879, the Konkapot Valley Railroad projected in 1891 to connect the Housatonic and the Central New England lines at Canaan, Connecticut was never built. By that time, the slump in Mill River's industries had proceeded to the extent that the new line was not economically feasible.

By World War II (1940s) all the mills, except the Brewer Saw Mill, were closed. Today the mills exist as archaeological sites (See statement below). With the waning of industry and population in the early twentieth century, the village's commercial activities also slowed, leaving only the Mill River General Store/Post Office (Map 17/14, MHC #44) and Ormsbee's Garage (Map 17/40) in operation. These two buildings, along with three institutional buildings testify to the character of the village in the early twentieth century. Mill River retained a vital role in the town as New Marlborough's center of government, reflected in the rebuilding of the town hall in 1909 (Map 17/46, MHC #49), replacement of the school in 1938 (Map 4/32), and construction of a new library in 1919 (Map 17/16, MHC #43), in the first decades of the twentieth century.

In a rather low key fashion, the influence of the automobile appears to have been an important factor in Mill River's stable character in the last 70 or 80 years. Cars provided residents with their only physical link to neighboring communities, and small garages proliferated in the first decades of the century. To serve the automobile enthusiasts, Edwin Stanton established a small commercial garage in Mill River in 1918. It burned in 1939 and was replaced by a new fireproof, concrete block structure, Ormsbee's Garage (Map 17/40).

(continued)

United States Department of the Interior
National Park Service

National Register of Historic Places Continuation Sheet

Mill River Historic District
New Marlborough (Berkshire County)
Massachusetts

Section number 8 Page 7

The rising popularity of the Berkshire region as a summer and weekend resort area had little impact on Mill River until the last few decades, when many properties have been purchased by part-time residents. The preservation of Mill River has largely been due to the efforts of private property owners and the New Marlborough Historical Society. The village's relatively remote location has also helped avoid the intense commercial development pressures that neighboring communities have experienced.

Archaeological Significance

Since patterns of prehistoric settlement and subsistence in New Marlborough are poorly documented, any surviving sites would be significant. Western Massachusetts, particularly the Berkshire County area along the New York/Massachusetts is underreported archaeologically. More sites should exist in the area than are currently known. Prehistoric sites in the New Marlborough area may contribute data indicating the extent to which sites in this area and Native American socio/political patterns are related more to developments to the west in New York, to the East along the Connecticut River Valley or southernly along the Housatonic River drainage to the Connecticut area. Nearly the entire town of New Marlborough is drained by the Housatonic drainage. This area may offer an excellent test case for the importance of riverine drainage settlement hypotheses in spite of the fact that major Native American culture core areas exist abutting the drainage in New York and the Connecticut River Valley.

The historic archaeological significance of the Mill River Historic District is well supported. The mills were the reason for the village's existence and development; their rise and decline carried the village. The level of known existing historical information chronicling the mills and the visual and physical presence of the sites in the ground make clear their high potential to reveal insights in industrial and local history through carefully designed archaeological research.

Of the eleven mills known to have existed along the Konkapot River in the village between 1742 and ca. 1942, eight have been identified. The general locations of the other three are known, and existing data can likely lead to identification of their specific sites with further archival and in-field study. In all cases, some level of information has been collected regarding the builders and owners, the function, the appearance, and the history of the mills. Several mills were photographed in the

(continued)

United States Department of the Interior
National Park Service

National Register of Historic Places
Continuation Sheet

Mill River Historic District
New Marlborough (Berkshire County)
Massachusetts

Section number 8, 9 Page 8, 1

early twentieth century, providing an extraordinary visual record of the buildings, dams, and related structures prior to demolition. In addition, the New Marlborough Historical Society possesses important collections of artifacts and memorabilia from the mills.

The study of these mill remains and related materials can fruitfully answer questions and complete gaps in our understanding in several areas: production history, industrial and motive power (water power) technology, and the chronology of the construction, repair, and alterations of the mills and engineering structures.

Finally, analysis of occupation related features can also provide details of the village's existence and how inhabitants of the village adapted to the mills rise and decline. These features can help provide detailed information on the lives of the mill workers and mill owners. Examples of the areas that could be addressed through study of material culture include: ways in which the lifeways of workers and owners differed; ways in which different ethnic groups adapted to village life; and changes in behavior, as reflected in the archaeological record, during the rise and decline of the village's economy. Similar approaches could be applied to the commercial properties in Mill River, perhaps focussing on the impact of imported consumer items on village life.

(end)

9. MAJOR BIBLIOGRAPHICAL REFERENCES

Barber, John W.

1893 *History and Antiquities of Every Town in Massachusetts*.
Dorr, Howland & Co., Worcester, MA.

Beers, F.W.

1876 *County Atlas of Berkshire, Massachusetts*. R.T. White &
Co., and J.B. Beers & Co., New York, NY.

The Berkshire Courier, G. B.

Microfilm library at Mason Library, Great Barrington, MA.

(continued)

United States Department of the Interior
National Park Service

National Register of Historic Places
Continuation Sheet

Mill River Historic District
New Marlborough (Berkshire County)
Massachusetts

Section number 9 Page 2

Cooke, Rollin, H.

1906 *Historic Homes and Institutions and Genealogical and Personal Memoirs of Berkshire County, Massachusetts.*
Lewis Publishing Co. New York and Chicago.

Federal Writers Project

1939 *The Berkshire Hills (American Guide Series)*, Duell, Sloan and Pearce, New York, NY

Fiedl, David, D. Rev. (edited)

1829 *A History of the county of Berkshire by the Gentlemen in the County.* Chapter on New Marlborough by Rev. Harley Goodwin, Samuel W. Bush. Pittsfield, MA.

Holland, Josiah, G.

1855 *History of Western Massachusetts.* Samuel Bowles & Co. Springfield, MA.

Nason, E., Rev. and B.B. Russell

1874 *A Gazetteer of the State of Massachusetts,* Boston, MA.

New Marlborough Historical Commission

1975 *An Informal History of the Town of New Marlborough, 1793-1975.*

Palmer, Charles J.

1910 *Berkshire County-It's Past History and Achievements.* Pittsfield, MA.

Sisson, H. D.

1937 *The Town of New Marlborough, Massachusetts* (unpublished compendium), Pittsfield, MA.

Smith Joseph .E.A.

1885 *History of Berkshire County Massachusetts.* J.B. Beers & Co. New York, NY.

Turner, Hadley K.

1944 *A History of New Marlborough.* Great Barrington, MA.

Walling, H. P.

1858 *Map of the County of Berkshire,* Smith, Gallup, and Company, New York, NY.

(continued)

**United States Department of the Interior
National Park Service**

**National Register of Historic Places
Continuation Sheet**

**Mill River Historic District
New Marlborough (Berkshire County)
Massachusetts**

Section number 9, 10 Page 3, 1

Wright, Harry A.

1949 *The Story of Western Massachusetts*. 4 Volumes.
Historical Publishing Co. New York, NY.

Gazetteer of Berkshire County, Massachusetts. Compiled and
Published by Hamilton Child. Syracuse, 1885 NY.

NOTE:

Unless otherwise specified, most references can be found at
The Berkshire Antheneum, Pittsfield; New Marlborough
Historical Room Museum; or Mason Library, Great Barrington.

(end)

10. GEOGRAPHICAL DATA

UTM References (cont.):

5)	18	643340	4663620	15)	18	643000	4663100
6)	18	643450	4663680	16)	18	643000	4663220
7)	18	643500	4663520	17)	18	643100	4663240
8)	18	643420	4663420	18)	18	643000	4663800
9)	18	643280	4663360	19)	18	642800	4663900
10)	18	643420	4663100	20)	18	642920	4664040
11)	18	643340	4662860	21)	18	642820	4664440
12)	18	642990	4662620	22)	18	642940	4664380
13)	18	643100	4662840	23)	18	643220	4664660
14)	18	643160	4663020	24)	18	643340	4664660
				25)	18	643360	4664580

Verbal Boundary Description:

The Mill River Historic District is roughly defined by the route of the Konkapot River and adjacent roads in the river's valley as it passes through the village. It encompasses lots abutting the river and roads as delineated on the accompanying town Assessor's Maps 4, 7, and 17, with the lot lines and the river forming the boundaries.

(continued)

**United States Department of the Interior
National Park Service**

**National Register of Historic Places
Continuation Sheet**

**Mill River Historic District
New Marlborough (Berkshire County)
Massachusetts**

Section number 10 Page 2

Boundary Justification:

The boundaries of the district are defined by, and include, the Konkapot River, which forms the west boundary at the north end of the district and the east boundary at the south end of the district, and by historic properties lining the roads. The boundaries include the historic properties associated with the village during its period of significance and exclude land not historically considered to be part of the village. They roughly correspond to the village as delineated in a nineteenth-century atlas [Beers 1876; Attachment A], extending from the Brewer saw mill site on the north to the J. Carroll & Co. lower paper mill site on the south.

(end)

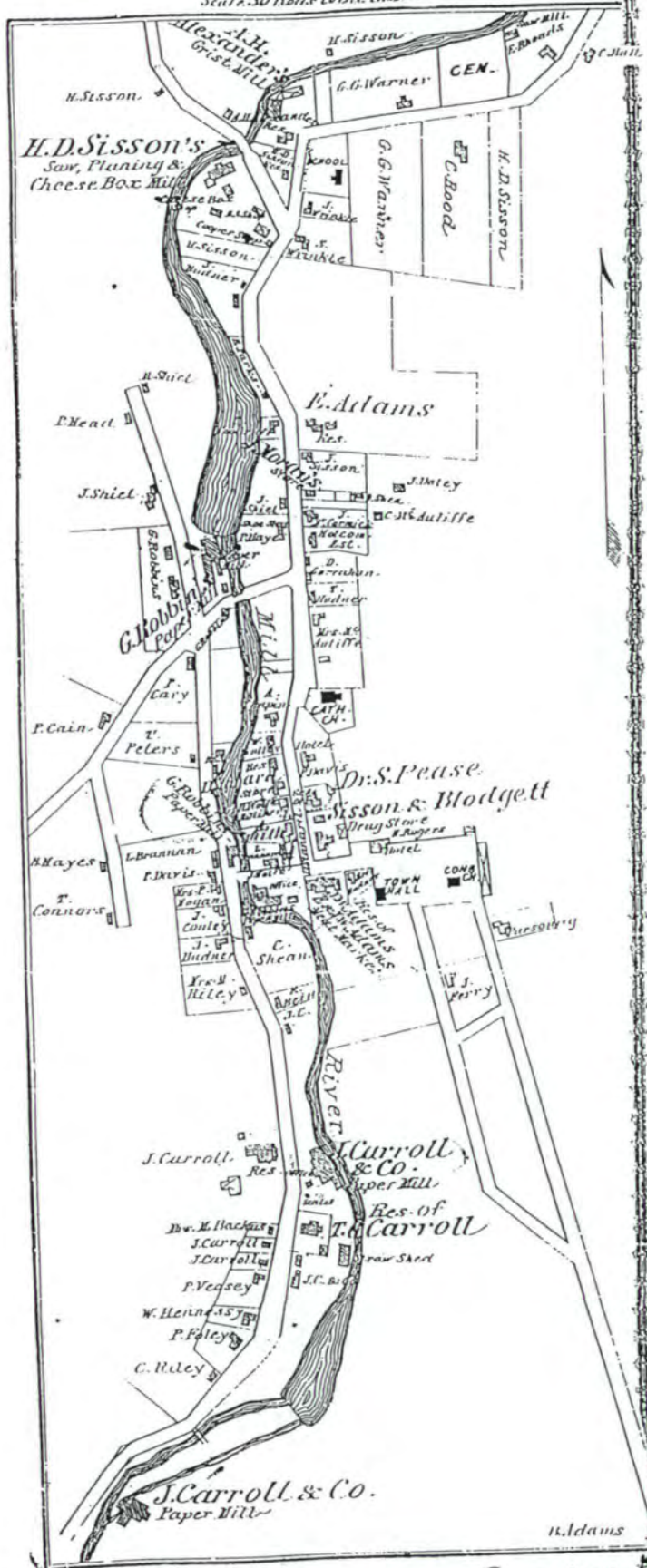


MILL RIVER

TOWN OF NEW MARLBOROUGH

Scale 30 Feet to the Inch

107



ATTACHMENT A: Beers, F. W.
1876 County Atlas of Berkshire, Massachusetts. R. T. White & Co.,
and J. B. Beers & Co., New York, NY.

**MILL RIVER HISTORIC DISTRICT
NEW MARLBOROUGH, (BERKSHIRE COUNTY)
MASSACHUSETTS
DISTRICT DATA SHEET**

Map/ Lot	MHC #	Historic Name	Street Address	Date of Construction	Status	Style	Resource Type
17/3	30	P. Hayes House, Shoe Shop	Main Street	ca. 1850	C	Classical Revival	B
		Garage		early 20th cen.	C	No Style	B
17/4	29	J. McCormick House, or Holcom Estate	Main Street	1790	C	Federal/ Greek Revival	B
		Garage		early 20th cen.	C	No Style (concrete block)	B
17/5		T. Hudner House	Main Street	ca. 1850	C	Greek Revival/ Colonial Revival	B
		Garage		early 20th cen.	C	Dutch Colonial Revival	B
17/7		Mrs. McAuliffe House	Main Street	1830	C	Greek Revival	B
17/11	34	Immaculate Conception Roman Catholic Church	Main Street	1866	C	Romanesque Revival	B
17/12	35	P. Davis Hotel, later Shaker Store	Main Street	ca. 1825	C	Greek Revival	B
		Barn		ca. 1825	C	No Style	B
17/10	46	H. Rogers Hotel	Main Street	ca. 1795	C	Federal/ Greek Revival	B
		Garage		early 20th cen.	C	No Style	B
17/13	36	Dr. S. Pease Res. & Office	Main Street	1875	C	Greek Revival	B
17/14	44	Sisson & Blodgett Drugstore (now Mill River Store & Post Office)	Main Street	1875	C	Greek Revival	B
		Garage		early 20th cen.	C	No Style	B
17/15	45	Sisson & Blodgett House	Main Street	ca. 1800	C	Greek Revival	B
		Barn (now art gallery)		19th cen.; 1988	C	Renovated	B
17/21	37	A. Chapin or W. Walley House	Main Street	1846	C	Classical Revival	B

**MILL RIVER HISTORIC DISTRICT
NEW MARLBOROUGH, (BERKSHIRE COUNTY)
MASSACHUSETTS
DISTRICT DATA SHEET**

Map/ Lot	MHC #	Historic Name	Street Address	Date of Construction	Status	Style	Resource Type
17/20	38	D. Stannard House	Main Street	1874	C	Classical Revival (Bracketed)	B
		Stable/ Garage		1874	C	Classical Revival	B
17/19	40	Mrs. H. Wolfe House	Main Street	ca. 1870	C	Greek Revival	B
17/18	42	A. Smith House	Main Street	1850	C	Italianate	B
		now Wool Home	Main Street	1840	C	Greek Revival	B
		Garage		1850	C	Greek Revival	B
17/18A	41	Mrs. H. Wolfe Millinery (later Maxwell Doctor Office)	Main Street	1845	C	Greek Revival	B
17/16	43	Public Library	Main Street	1919	C	Classical Revival	B
17/17 & 17/30B		Upper G. Robbins Paper Mill Site (Creamery Site)	River Road	1836	C	N/A	Site
17/30		Blacksmith Shop?? now Blount Home	River Road	19th century	C	Italianate (vernacular)	B
17/25		House (site of G. Robbins House)	Hayes Hill Road	ca. 1980	NC	Reproduction Cape	B
		Shed		ca. 1980	NC	No Style	B
17/24		House	River Road	ca. 1910	C	Reproduction Cape	B
4/62		G. Robbins House (now 80 Acres Club)	River Road	ca. 1820	C	Greek Revival	B
17/26A		P. Cary House	River Road	ca. 1790	C	Colonial	B
17/26B		P. Cary Barn; now Davis Home	River Road	early 20th cen.?	NC	No Style; altered for residence, 1970s	B
17/22	33	G. Robbins House	Hayes Hill Road	ca. 1835	C	Greek Revival	B
		Garage		early 20th cen.	C	No Style	B
17/23		Crosby - Robbins Paper Mill Site	Hayes Hill Road	1836	C	N/A	Site

**MILL RIVER HISTORIC DISTRICT
NEW MARLBOROUGH, (BERKSHIRE COUNTY)
MASSACHUSETTS
DISTRICT DATA SHEET**

Map/ Lot	MHC #	Historic Name	Street Address	Date of Construction	Status	Style	Resource Type
17/47	51	Former United (Congregational) Church (now residence)	Mill River Southfield Road	1870	C	Romanesque Revival	B
17/56A	52	Parsonage Garage	Church Road	1872 early 20th cen.	C C	Italianate No Style	B B
17/46	49	Town Hall	Mill River Southfield Road	1871; burned & rebuilt 1909	C	Greek Revival/ Colonial Revival	B
17/45A		Parking - Town Hall	Mill River Southfield Road	--	--	N/A	
17/48		J. Ferry House	Mill River Southfield Road	ca. 1850	C	Greek Revival	B
17/45	48	Mrs. Hudner Garage	Main Street	1858 early 20th cen.	C C	Greek Revival No Style	B B
17/40A	47	Res. of J.W. Adams, E. & J.W. Adams Meat Market Barn Garage	Main Street	ca. 1795 19th century early 20th cen.	C C C	Greek Revival No Style No Style	B B B
17/40		Ormsbee's Garage	Main Street	1939	C	Commercial (Cement Block)	B
		Lower, G.H. Robbins Paper Mill Site	Main Street	ca. 1850	C	N/A	Site
17/42	54	C. Shean House Shed	Clayton Road	1850 20th cen.	C NC	Greek Revival No Style	B B
17/43	55	E. Bein House	Clayton Road	1850	C	Greek Revival	B
17/44		J. Carroll House	Clayton Road	ca. 1845	C	Greek Revival (double house)	B

**MILL RIVER HISTORIC DISTRICT
NEW MARLBOROUGH, (BERKSHIRE COUNTY)
MASSACHUSETTS
DISTRICT DATA SHEET**

Map/ Lot	MHC #	Historic Name	Street Address	Date of Construction	Status	Style	Resource Type
17/34		P. Davis House Shed	River Road	1850 20th cen.	C NC	Greek Revival No Style	B B
17/31		T. Peters House	River Road	1850	C	Greek Revival	B
		now Johnson House	River Road	1988	NC	Modern	B
17/35	53	Mrs. P. Hogan House	River Road	1846	C	Greek Revival	B
17/36		J. Conley House	River Road	1858	C	Greek Revival	B
17/37		J. Hudner House	River Road	1858	C	Greek Revival	B
17/38		Mrs. M. Riley House	River Road	1850	C	Greek Revival	B
17/41		now Zaleski House	River Road	1920	C	Cape	B
		Site of John Carroll Res.	River Road	ca. 1850 ?	C	N/A	Site
17/45		Upper J. Carroll & Co. Paper Mill Site	River Road	1840s/1856	C	N/A	Site
4/28		now O'Brien Home Garage	School Road	1945-1963 1945-1963	NC NC	Modern Cape No Style	B B
4/74	22	C. Hall House Barn 3 Outbuildings	School Road	ca. 1880 19th century early 20th cen.	C C C (3)	Queen Anne No Style No Style	B B B (3)
4/74B		Barn (now Stanton)		early 20th cen.	C	No Style - dairy barn	B
4/29		Cemetery	School Road	1758 (earliest stone)	C	N/A	Site
4/30	25	G.G. Warner House Garage/Apartment	School Road	1835 ca. 1990	C NC	Greek Revival Neo-Colonial	B B

**MILL RIVER HISTORIC DISTRICT
NEW MARLBOROUGH, (BERKSHIRE COUNTY)
MASSACHUSETTS
DISTRICT DATA SHEET**

Map/ Lot	MHC #	Historic Name	Street Address	Date of Construction	Status	Style	Resource Type
4/31	24	C. Rood House	School Road	ca. 1850	C	Gothic Revival	B
		Garage		early 20th cen.	C	No Style	B
4/32		Mill River School	School Road	1938	C	Georgian Revival	B
4/33		now Sheldon - Vacant	School Road	--	--	N/A	
4/34		now Sheldon House	School Road	ca. 1929	C	Tudor Revival	B
		Garage		ca. 1929	C	No Style	B
4/35	26	H. D. Sisson House	School Road	1825	C	Federal/Greek Revival	B
		Blackmer - Alexander Grist Mill Site	School Road	1744	C	N/A	Site
		Garage		20th cen.	NC	No Style	B
4/74A	23	E. Rhoades House	School Road	ca. 1850	C	Greek Revival	B
		Garage and Outbuilding		early 20th cen.	C (2)	No Style	B (2)
		Brewer Saw Mill Site	School Road	ca. 1764/1814	C	N/A	Site
4/67A	14	H. Sisson House	Mill River - Great Barrington Road	1813	C	Federal	B
		Garage		early 20th cen.	C	No Style	B
4/38		Sisson House	Main Road	1927	C	Bungalow/ Colonial Revival	B
		Garage		1927	C	No Style	B
		Garage		1971	NC	No Style	B
		Ward - Sisson Saw Mill Site	Main Road	1742	C	N/A	Site
4/36	27	J. Wrinkle House	School Road	ca. 1835	C	Greek Revival	B
		Garage		early 20th cen.	C	No Style	B

**MILL RIVER HISTORIC DISTRICT
NEW MARLBOROUGH, (BERKSHIRE COUNTY)
MASSACHUSETTS
DISTRICT DATA SHEET**

Map/ Lot	MHC #	Historic Name	Street Address	Date of Construction	Status	Style	Resource Type
4/37		S. Wrinkle House	School Road	ca. 1835	C	Greek Revival	B
4/62		now Dempsey House	Main Road	ca. 1970	NC	Modern	B
		Garage		ca. 1970	NC	Modern	B
		Site of E. Adams Res.	Main Road	ca. 1850?	C	N/A	Site
4/64		C. Woodruff House	Main Road	ca. 1845	C	Greek Revival	B
4/80		now Goodness House (site of J. Morgan's Store)	Main Road	early 20th cen.	C	Colonial Revival	B
		Garage		early 20th cen.	C	No Style	B
4/81		J. Sisson House	Main Road	ca. 1850	C	Greek Revival	B
7/13		now Klein House (J. Carroll House?)	Clayton Road	ca. 1850	C	Greek Revival	B
		Garage		early 20th cen.	C	No Style	B
7/14	57	J. Carroll & Co. House	Clayton Road	ca. 1850	C	Greek Revival (vernacular)	B
7/28		now Fleury House (J. Carroll House?)	Clayton Road	ca. 1850	C	Greek Revival	B
7/27		now Mathews House	Clayton Road	20th century	NC	No Style (former house trailer)	B
		Garage		20th century	NC	No Style	B
7/29		P. Veasey House ?	Clayton Road	1850	C	Greek Revival	B
		Garage		early 20th cen.	C	No Style	B
7/26		now Knapke House	Clayton Road	ca. 1880	C	Victorian (vernacular); altered	B
		Garage		early 20th cen.	C	No Style	B
7/26 & 7/25		Lower J. Carroll & Co. Mill Site (7/26 Dam; 7/25 Mill)	Clayton Road	1873	C	N/A	Site

**MILL RIVER HISTORIC DISTRICT
NEW MARLBOROUGH, (BERKSHIRE COUNTY)
MASSACHUSETTS
DISTRICT DATA SHEET**

Map/ Lot	MHC #	Historic Name	Street Address	Date of Construction	Status	Style	Resource Type
7/30		now Laprell House (W. Hennessy House?)	Clayton Road	ca. 1850	C	Greek Revival	B
		Shed		20th century	NC	No Style	B
4/72	56	T.G. Carroll Residence	Clayton Road	ca. 1850	C	Italianate	B
		Garage		early 20th cen.	C	No Style	B
		Outbuilding		early 20th cen.	C	No Style	B
		2 Bridges	Over the Konkapot River	Late 20th cen.	NC (2)	Concrete	St (2)

NOTE: Historic names are derived from the 1876 Beers map of Mill River Village

TOTAL RESOURCES: 103 Contributing; 18 Noncontributing

92 Contributing Buildings 16 Noncontributing Buildings
11 Contributing Sites 2 Noncontributing Structures

**United States Department of the Interior
National Park Service**

**National Register of Historic Places
Continuation Sheet**

Section number _____ Page _____

SUPPLEMENTARY LISTING RECORD

NRIS Reference Number: 94000423 Date Listed: 5/17/94

Mill River Historic District Berkshire MA
Property Name: County: State:

Multiple Name

This property is listed in the National Register of Historic Places in accordance with the attached nomination documentation subject to the following exceptions, exclusions, or amendments, notwithstanding the National Park Service certification included in the nomination documentation.

Patrick Andrus
for Signature of the Keeper

5/17/94
Date of Action

=====
Amended Items in Nomination:

The nomination form has checked National Register Criteria Consideration A (Religious Property) and D (Cemetery) as applying to this district. As noted in National Register Bulletin 15 (pp. 26 and 34) and Bulletin 16A (p.36) these Criteria Considerations do not have to be met; in districts, check only the Criteria Considerations applying to the entire district or to a predominant resource or group of resources within the district. The form is officially amended to delete the two Criteria Considerations.

DISTRIBUTION:

- National Register property file
- Nominating Authority (without nomination attachment)

UNITED STATES DEPARTMENT OF THE INTERIOR
NATIONAL PARK SERVICE

NATIONAL REGISTER OF HISTORIC PLACES
EVALUATION/RETURN SHEET

REQUESTED ACTION: NOMINATION

PROPERTY NAME: Mill River Historic District

MULTIPLE NAME:

STATE & COUNTY: MASSACHUSETTS, Berkshire

DATE RECEIVED: 4/05/94 DATE OF PENDING LIST: 4/19/94
DATE OF 16TH DAY: 5/05/94 DATE OF 45TH DAY: 5/20/94
DATE OF WEEKLY LIST:

REFERENCE NUMBER: 94000423

NOMINATOR: STATE

REASONS FOR REVIEW:

APPEAL: N DATA PROBLEM: N LANDSCAPE: N LESS THAN 50 YEARS: N
OTHER: N PDIL: N PERIOD: N PROGRAM UNAPPROVED: N
REQUEST: N SAMPLE: N SLR DRAFT: Y NATIONAL: N

COMMENT WAIVER: N

ACCEPT RETURN REJECT _____ DATE

ABSTRACT/SUMMARY COMMENTS:

Historically and architecturally significant mill village with important archeological remains.

RECOM./CRITERIA Accept A,C,D
REVIEWER Patrick Andrews
DISCIPLINE Historian
DATE 5/17/94

DOCUMENTATION see attached comments Y/N see attached SLR Y/N

CLASSIFICATION

count resource type

STATE/FEDERAL AGENCY CERTIFICATION

FUNCTION

historic current

DESCRIPTION

architectural classification
 materials
 descriptive text

SIGNIFICANCE

Period Areas of Significance--Check and justify below

Specific dates Builder/Architect
Statement of Significance (in one paragraph)

summary paragraph
 completeness
 clarity
 applicable criteria
 justification of areas checked
 relating significance to the resource
 context
 relationship of integrity to significance
 justification of exception
 other

BIBLIOGRAPHY

GEOGRAPHICAL DATA

acreage verbal boundary description
 UTM's boundary justification

ACCOMPANYING DOCUMENTATION/PRESENTATION

sketch maps USGS maps photographs presentation

OTHER COMMENTS

Questions concerning this nomination may be directed to

_____ Phone _____

Signed _____ Date _____



Site of lower Carroll Mill (or Paper Co.)
Mill River - Clayton Road
New Marlborough, MA (Mill River Village)

By: Theodore Atkinson - 4 Jan 1990.

Neg. at: Historical Room
New Marlborough Town Hall
Mill River, MA 01244

No. 1 of 8.

Description: Site of Carroll Paper Co. of the 19th century, on the Konkapot River, looking east from the Mill River - Clayton Rd.

- 1) SITE OF LOWER CARROLL MILL / PAPER CO.
CLAYTON ROAD, NEW MARLBOROUGH
MILL RIVER HIST. DIST.
- 2) BERKSHIRE COUNTY, MA
- 3) THEODORE ATKINSON, PHOTOGRAPHER
- 4) 4 JAN. 90
- 5) NEG.: HISTORICAL ROOM
NEW MARLBOROUGH TOWN HALL
MILL RIVER, MA 01244
- 6) VIEW: SITE OF CARROLL PAPER CO. OF THE 19th
CENTURY, ON THE KONKAPOT RIVER, LOOKING
EAST FROM THE MILL RIVER - CLAYTON RD.
- 7) PHOTO # 1 OF 16



A view of Mill River Village.
Mill River - Southfield Rd. (off Main Street)
New Marlborough, Mass. (Mill River Village)

By: Theodore Atkinson - 4 Jan 1990.
Neg. at: Historical Room
New Marlborough Town Hall
Mill River, MA 01244

No. 2 of 8. 16

Description: Looking west from the former Cong'l.
Church. Town Hall on left, former home of Lorin
Keyes (now Lehrman) on right, New Marlborough Public
Library (with columns) at center.

- 1) A VIEW OF MILL RIVER VILLAGE
MILL RIVER - SOUTHFIELD RD (OFF MAIN ST.)
MILL RIVER HIST. DIST.
- 2) BERKSHIRE COUNTY, MA
- 3) THEODORE ATKINSON, PHOTOGRAPHER
- 4) 4 JAN 90
- 5) NEG.: HISTORICAL ROOM
NEW MARLBOROUGH TOWN HALL
MILL RIVER, MA 01244
- 6) VIEW: LOOKING WEST FROM THE FORMER CONGREGATIONAL
CHURCH. TOWN HALL ON LEFT, FORMER HOME OF LORIN
KEYES (NOW LEHRMAN) ON RIGHT, NEW MARLBOROUGH
PUBLIC LIBRARY (w/COLUMNS) AT CENTER.
- 7) PHOTO # 2 OF 16



Center of the Mill River Village
Main Street
New Marlborough, Mass. (Mill River Village)

By: Theodore Atkinson - 4 Jan 1990

Neg. at: Historical Room
New Marlborough Town Hall
Mill River, MA 01244

No. 4 of 8.16

Description: Public Library on left, former home
of Lorin Keyes (now Lehrman) on right, Mill River
General Store at center.

1) CENTER OF THE MILL RIVER VILLAGE
MAIN STREET
MILL RIVER HIST. DIST.

2) BERKSHIRE COUNTY, MA

3) THEODORE ATKINSON, PHOTOGRAPHER

4) 4 JAN 90

5) NEG. : HISTORICAL ROOM
NEW MARLBOROUGH TOWN HALL
MILL RIVER, MA 01244

6) VIEW: PUBLIC LIBRARY ON LEFT, FORMER HOME OF LORIN
KEYES (NOW LEHRMAN) ON RIGHT, MILL RIVER GENERAL
STORE AT CENTER.

7) PHOTO # 4 OF 16



Creamery site on Konkapot River
River Road
New Marlborough, Mass. (Mill River Village)

By: Theodore Atkinson - 4 Jan 1990
Neg. at: Historical Room
New Marlborough Town Hall
Mill River, MA 01244

No. 3 of 8.10

Description: Looking east across the Konkapot River,
from River Rd. Creamery site (1898+) in foreground,
earlier the site in 1836 of the Warren Wheeler &
Sons paper co.; library at center; Stanton home
on right; former Cong'l. Church in distance.

1) CREAMERY SITE ON KONKAPOT RIVER
RIVER RD
MILL RIVER HIST. DIST.

2) BERKSHIRE COUNTY, MA

3) THEODORE ATKINSON, PHOTOGRAPHER

4) 4 JAN. 90

5) NEG: HISTORICAL ROOM
NEW MARLBOROUGH TOWN HALL
MILL RIVER, MA 01244

6) VIEW: LOOKING EAST ACROSS THE KONKAPOT RIVER,
FROM RIVER ROAD. CREAMERY SITE (1898+) IN
FOREGROUND, EARLIER SITE IN 1836 OF THE
WARREN WHEELER & SONS PAPER CO.; LIBRARY
AT CENTER; STANTON HOME ON RIGHT;
FORMER CONGREGATIONAL CHURCH IN DISTANCE

7) PHOTO # 3 OF 16



Main Street houses.
Main Street (Mill River Village)
New Marlborough, MA 01244

By: Theodore Atkinson, 4 Jan 1990
Neg. at: Historical Room
New Marlborough Town Hall
Mill River, MA 01244

No. 5 Of 8.16

Description: Three houses on the east side of
Main Street in the center of the village. From
l. to rt. they are: Sporn house, Mill River
General Store, Lehrman house, formerly owned by
Lorin Keyes.

1) MAIN STREET HOUSES
MAIN STREET
MILL RIVER HIST. DIST.

2) BERKSHIRE COUNTY, MA

3) THEODORE ATKINSON, PHOTOGRAPHER

4) 4 JAN 90

5) NEG.: HISTORICAL ROOM
NEW MARLBOROUGH TOWN HALL
MILL RIVER, MA 01244

6) VIEW: THREE HOUSES ON THE EAST SIDE OF MAIN ST. IN THE
CENTER OF THE VILLAGE. FROM LEFT TO RIGHT THEY
ARE: SPORN HOUSE, MILL RIVER GENERAL STORE,
LEHRMAN HOUSE, FORMERLY OWNED BY LORIN KEYES.

7) PHOTO # 5 OF 16



Site of Crosby-Robbins Paper Mill
Hayes Hill Road
New Marlborough, Mass. (Mill River Village)

By: Theodore Atkinson - 4 Jan 1990.

Neg. at: Historical Room
New Marlborough Town Hall
Mill River, MA 01244

No. 6 of 8.16

Description: Site of the 19th cent. "Upper Paper Mill" of Crosby & Robbins on the Konkapot River. The viewer looks north up the river from a bridge on Hayes Hill Road.

1) SITE OF CROSBY-ROBBINS PAPER MILL
HAYES HILL ROAD
~~NE~~ MILL RIVER HIST. DIST.

2) BERKSHIRE COUNTY, MA

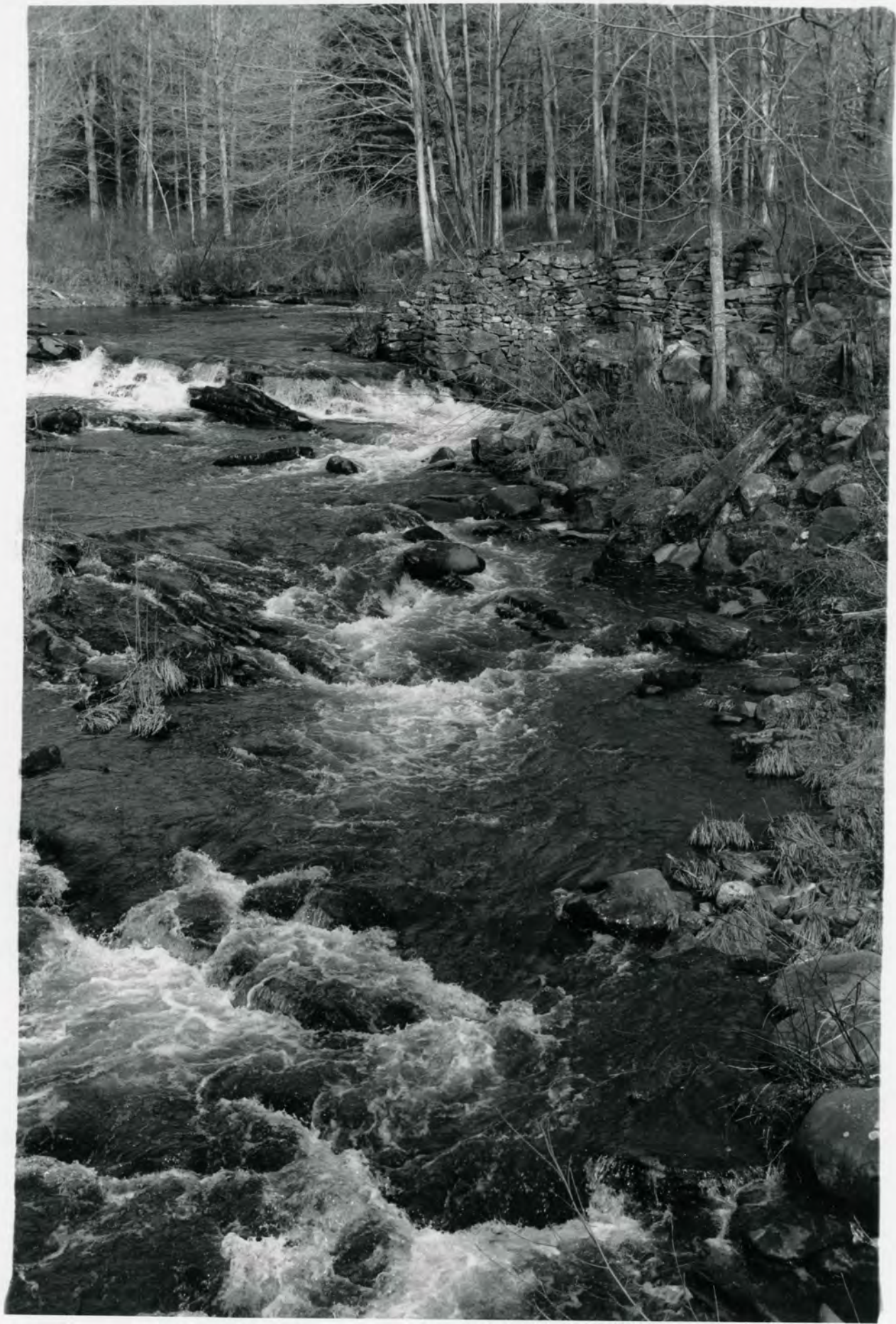
3) THEODORE ATKINSON, PHOTOGRAPHER

4) 4 JAN 90

5) NEG.: HISTORICAL ROOM
NEW MARLBOROUGH TOWN HALL
MILL RIVER, MA 01244

6) VIEW: SITE OF THE 19TH CENTURY "UPPER PAPER MILL" OF CROSBY & ROBBINS ON THE KONKAPOT RIVER. THE VIEWER LOOKS NORTH UP THE RIVER FROM A BRIDGE ON HAYES HILL ROAD.

7) PHOTO # 6 OF 16.



Site of Nahum Ward gristmill.
Mill River - Great Barrington Rd.
New Marlborough, Mass. (Mill River Village)

By: Theodore Atkinson - 4 Jan 1990.

Neg. at: Historical Room
New Marlborough Town Hall
Mill River, MA 01244

No. 7 of 8.11.6

Description: 1742 site of the Nahum Ward gristmill
on the east side of the Konkapot River. The
viewer looks up stream and north from a bridge
on the Mill River - Great Barrington Road.

- 1) SITE OF NAHUM WARD GRISTMILL
GREAT BARRINGTON RD
MILL RIVER HIST. DIST.
- 2) BERKSHIRE COUNTY, MA
- 3) THEODORE ATKINSON, PHOTOGRAPHER
- 4) 4 JAN 90
- 5) NEG.: HISTORICAL ROOM
NEW MARLBOROUGH TOWN HALL
MILL RIVER, MA 01244
- 6) VIEW: 1742 SITE OF THE NAHUM WARD GRISTMILL
ON THE EAST SIDE OF THE KONKAPOT
RIVER. THE VIEWER LOOKS UP STREAM
; NORTH FROM A BRIDGE ON THE MILL
RIVER - GREAT BARRINGTON ROAD.
- 7) PHOTO # 7 OF 16



View from Old Mill River Cemetery.
School Road
New Marlborough, Mass. (Mill River Village)

By: Theodore Atkinson - 4 Jan 1990.
Neg. at: Historical Room
New Marlborough Town Hall
Mill River, MA 01244

No. 8 of 8:16

Description: Old Mill River Cem. in foreground;
Field property on right; New Marlborough Central
School on left. (Abt. 30 feet to the right, down
an embankment, is the Konkapot River.)

1) VIEW FROM OLD MILL RIVER CEMETERY
SCHOOL ROAD
MILL RIVER HIST. DIST.

2) BERKSHIRE COUNTY, MA

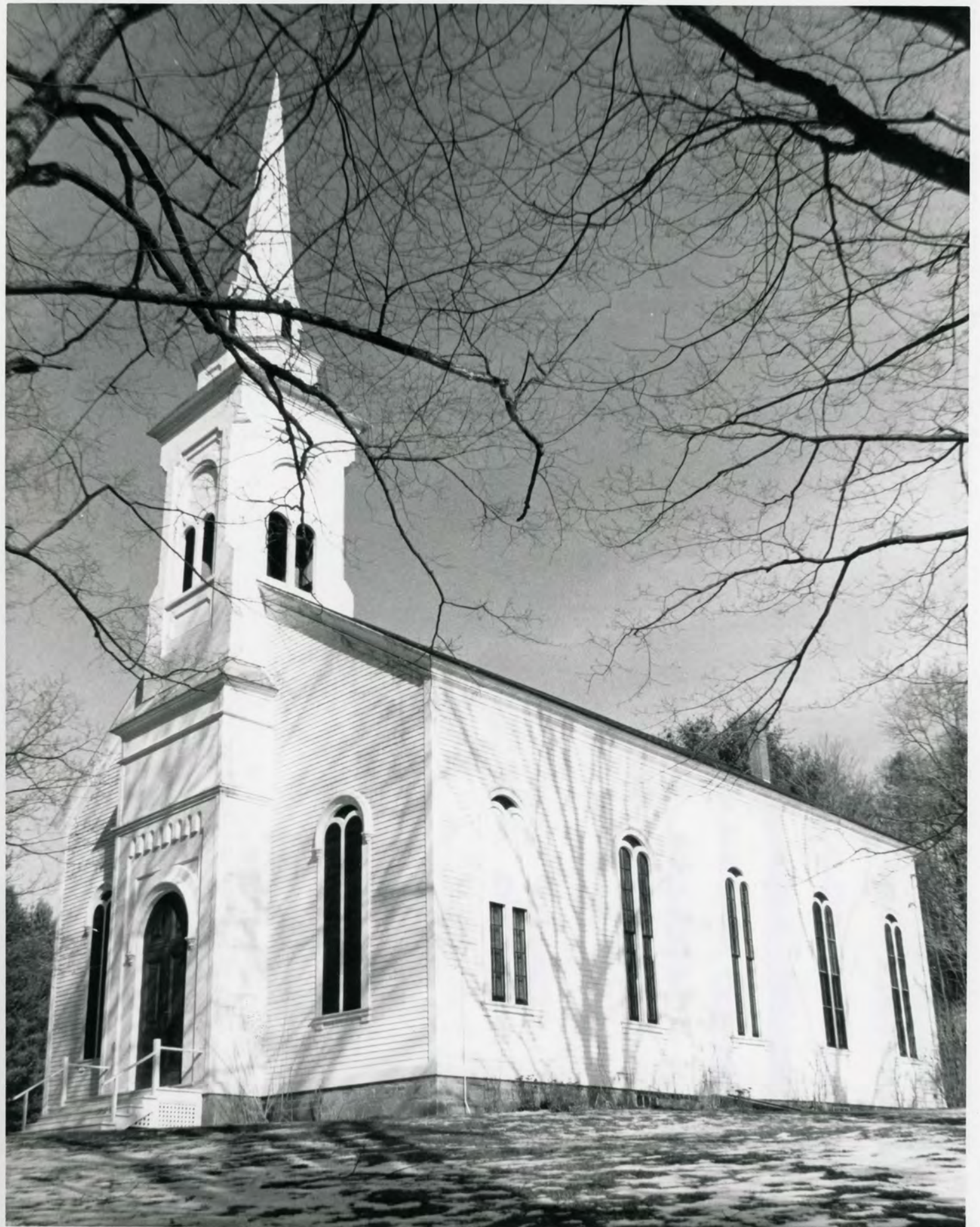
3) THEODORE ATKINSON, PHOTOGRAPHER

4) 4 JAN 90

5) NEG.: HISTORICAL ROOM
NEW MARLBOROUGH TOWN HALL
MILL RIVER, MA 01244

6) VIEW: OLD MILL RIVER CEMETERY IN FOREGROUND; FIELD
PROPERTY ON RIGHT; NEW MARLBOROUGH CENTRAL
SCHOOL ON LEFT. (ABT. 30 FEET TO THE RIGHT,
DOWN ON EMBANKMENT, IS THE KONKAPOT RIVER).

7) PHOTO # 8 OF 16



1) FORMER UNITED CONGREGATIONAL CHURCH
SOUTHFIELD ROAD
MILL RIVER HIST. DIST.

2) BERKSHIRE COUNTY, MA

3) ~~THEODORE ATKINSON~~, ^{ICE HOUSE STUDIO} PHOTOGRAPHER

4) ~~1 JAN 90~~ MARCH 91

5) NEG.: HISTORICAL ROOM
NEW MARLBOROUGH TOWN HALL
MILL RIVER, MA 01244

6) VIEW: LOOKING NORTH AT THE FACADE (WEST ELEVATION)
AND THE SIDE (SOUTH) ELEVATION.

7) PHOTO # 9 OF 16

17-47- United Church
E. Mill River - South
field Rd.

3-91

9 OF 16

ICE HOUSE STUDIO
ALFRED LENARDSON EDGAR ZUKAUSKAS
PHOTOGRAPHERS



1) IMMACULATE CONCEPTION CHURCH
MAIN STREET
MILL RIVER HIST. DIST.

2) BERKSHIRE COUNTY, MA

3) THE ICE HOUSE STUDIO PHOTOGRAPHERS

4) MARCH 91

5) NEG.: HISTORICAL ROOM
NEW MARLBOROUGH TOWN HALL
MILL RIVER, MA 02144

6) VIEW: LOOKING WEST, AT THE EAST SIDE OF THE CHURCH

7) PHOTO # 10 OF 16

#17-11 Immaculate
Conception Church
E. side main St.
north of mill River
Village. 3-91

ICE HOUSE STUDIO
ALFRED LENARDSON EDGAR ZUKAUSKAS
PHOTOGRAPHERS

10 of 16



- 1) BREWER HOUSE
SCHOOL ROAD
MILL RIVER HIST. DIST.
- 2) BERKSHIRE COUNTY, MA
- 3) ICE HOUSE STUDIO PHOTOGRAPHERS
- 4) MARCH 1991
- 5) NEG.: HISTORICAL ROOM
NEW MARLBOROUGH TOWN HALL
MILL RIVER, MA 02144
- 6) VIEW: LOOKING SOUTH AT THE NORTH ELEVATION OF THE
BREWER HOUSE.
- 7) PHOTO # 11 OF 16

7-28 Brewer Home
School Rd - S. side
3/91

ICE HOUSE STUDIO
ALFRED LENARDSON EDGAR ZUKAUSKAS
PHOTOGRAPHERS



- 1) SHAKER STORE
MAIN STREET
MILL RIVER HIST. DIST.
- 2) BERKSHIRE COUNTY, MA
- 3) ICE HOUSE STUDIO PHOTOGRAPHERS
- 4) MARCH 91
- 5) NEG.: HISTORICAL ROOM
NEW MARLBOROUGH TOWN HALL
MILL RIVER, MA 02144
- 6) VIEW: LOOKING SOUTHEAST, AT THE WEST AND NORTH
ELEVATIONS OF THE SHAKER STORE.
- 7) PHOTO # 12 OF 16

#17-12 Shaker Store
E. side Main St. Mill
River 3-91

ICE HOUSE STUDIO
ALFRED LENARDSON EDGAR ZUKAUSKAS
PHOTOGRAPHERS

12 OF 16



- 1) OLD HOTEL
MAIN STREET
MILL RIVER HIST. DIST.
- 2) BERKSHIRE COUNTY, MA
- 3) ICE HOUSE STUDIO PHOTOGRAPHERS
- 4) MARCH 91
- 5) NEG.: HISTORICAL ROOM
NEW MARLBOROUGH TOWN HALL
NEW MARLBOROUGH, MA
- 6) VIEW: LOOKING NORTH AT THE SOUTH ELEVATION OF
THE OLD HOTEL.
- 7) PHOTO # 13 OF 16

17-10 Old Hotel
main St. (n) across
from Town Hall
3-91

ICE HOUSE STUDIO
ALFRED LENARDSON EDGAR ZUKAUSKAS
PHOTOGRAPHERS

13 OF 16



- 1) MURRY HOUSE
CLAYTON ROAD
MILL RIVER HIST. DIST.
- 2) BERKSHIRE COUNTY, MA
- 3) ICE HOUSE STUDIO PHOTOGRAPHERS

4) MARCH 91

5) NEG.: HISTORICAL ROOM
NEW MARLBOROUGH TOWN HALL
MILL RIVER, MA 02144

6) VIEW: LOOKING SOUTHEAST, AT THE NORTH (SIDE) AND EAST (FACADE) ELEVATIONS OF THE MURRY HOUSE.

7) PHOTO # ~~14~~¹⁴ OF 16

#4 72 - murray house
E. side mill River - Clayton Rd
3-91

ICE HOUSE STUDIO
ALFRED LENARDSON EDGAR ZUKAUSKAS
PHOTOGRAPHERS



- 1) NEW MARLBOROUGH PUBLIC LIBRARY
MAIN STREET
MILL RIVER HIST. DIST.
- 2) BERKSHIRE COUNTY, MA
- 3) ICE HOUSE STUDIO PHOTOGRAPHERS
- 4) MARCH 91
- 5) NEG: HISTORICAL ROOM
NEW MARLBOROUGH TOWN HALL
NEW MARLBOROUGH, MA 02144
- 6) VIEW: LOOKING ^{WEST} EAST AT THE EAST FACADE OF THE
NEW MARLBOROUGH PUBLIC LIBRARY.
- 7) PHOTO # 15 OF 16

New Marlborough Public Library
West of Main St. Mill
River 3-91.

ICE HOUSE STUDIO
ALFRED BENARDSON EDWIN ZUKAUSKAS
PHOTOGRAPHERS



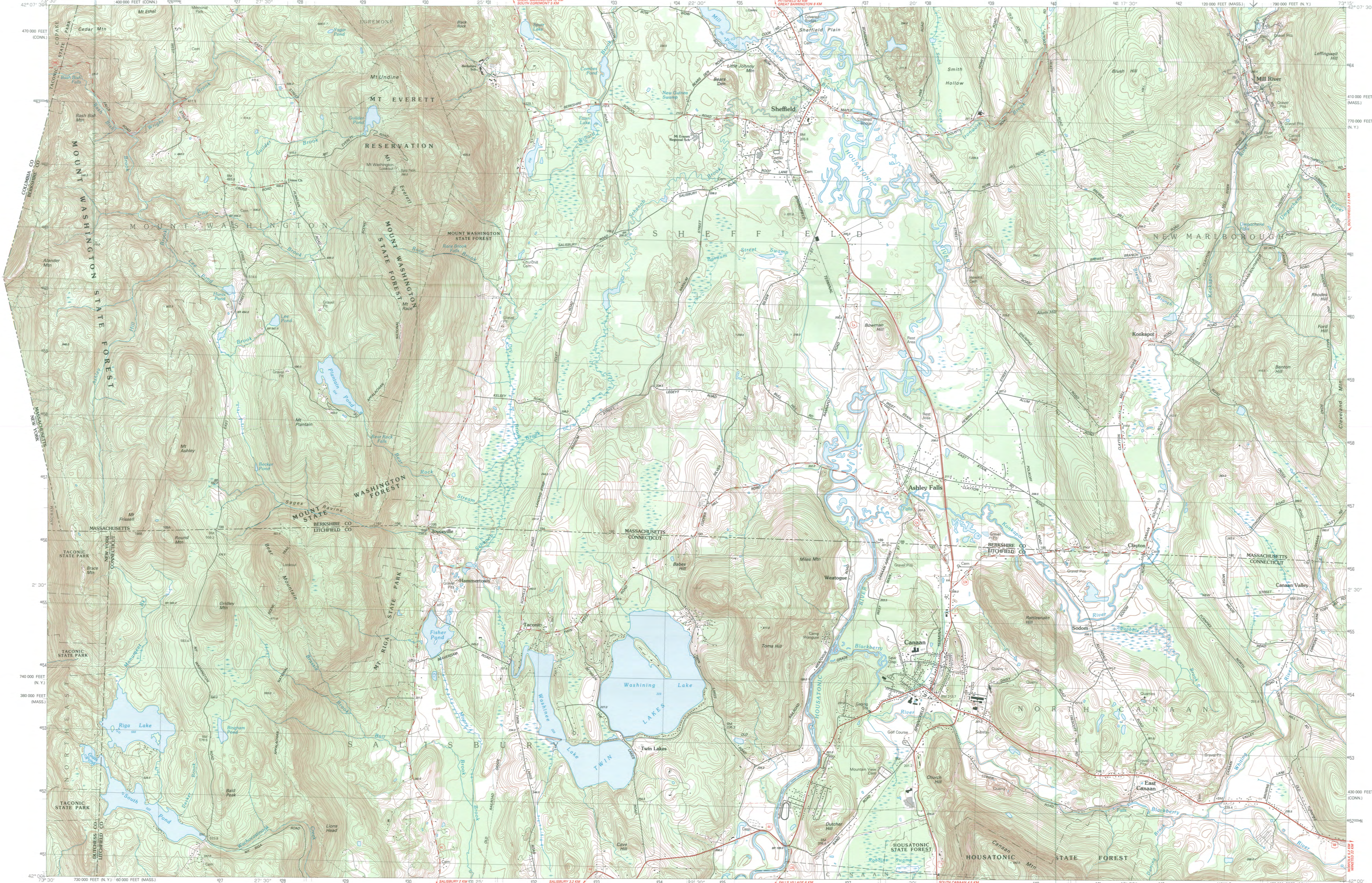
NEW MARLBOROUGH TOWN HALL
MILL RIVER VILLAGE

- 1) TOWN HALL
SOUTHFIELD ROAD
MILL RIVER HIST. DIST.
- 2) BERKSHIRE COUNTY, MA
- 3) ICE HOUSE STUDIO PHOTOGRAPHERS
- 4) MARCH 91
- 5) NEG.: HISTORICAL ROOM
NEW MARLBOROUGH TOWN HALL
NEW MARLBOROUGH, MA 02144
- 6) VIEW: LOOKING SOUTH AT THE NORTH ELEVATION OF THE
NEW MARLBOROUGH TOWN HALL.
- 7) PHOTO # 16 OF 16

New Marlborough Town Hall
S. of Mill River - South
field Rd. Village of
Mill River. 3-91

ICE HOUSE STUDIO
ALFRED LENARDSON EDGAR ZUKAUSKAS
PHOTOGRAPHERS

16 OF 16



Ashley Falls MASS.-CONN.-N. Y.

1:25 000-scale metric topographic map



- 7.5 X 15 MINUTE QUADRANGLE SHOWING
- Contours and elevations in meters
 - Highways, roads and other manmade structures
 - Water features
 - Woodland areas
 - Geographic names



Produced by the United States Geological Survey in cooperation with Massachusetts Department of Public Works and Connecticut Department of Environmental Protection. Control by USGS, NOS/NOAA, Commonwealth of Massachusetts agencies, and Connecticut Geographic Survey. Compiled by photogrammetric methods from aerial photographs taken 1968. Field checked 1981. Map issued 1987. This area also covered by 7.5-minute, 1:25,000-scale maps: Babbish Falls and Ashley Falls dated 1969. Projection and 1000-meter grid, zone 18. Universal Transverse Mercator. Massachusetts coordinate system, mainland zone. Connecticut coordinate system, and New York coordinate system, east zone. 1927 North American Datum. To place on the predicted North American Datum 1983, move the projection lines 6 meters south and 36 meters west as shown by dashed corner ticks. There may be private inholdings within the boundaries of the National or State reservations shown on this map.

CONTOUR INTERVAL 3 METERS
NATIONAL GEODETIC VERTICAL DATUM OF 1929
CONTOUR ELEVATIONS SHOWN TO THE NEAREST 0.1 METER
OTHER ELEVATIONS SHOWN TO THE NEAREST 0.5 METER

THIS MAP COMPLIES WITH NATIONAL MAP ACCURACY STANDARDS

CONVERSION TABLE		DECLINATION DIAGRAM		ADJOINING MAPS		
Meters	Feet	Diagram		1	2	3
1	3.2808			1	2	3
2	6.5617			4	5	6
3	9.8425			7	8	
4	13.1234					
5	16.4042					
6	19.6850					
7	22.9659					
8	26.2467					
9	29.5275					
10	32.8084					

To convert meters to feet: multiply by 3.2808
To convert feet to meters: multiply by 0.3048

UTM grid convergence (CON) and magnetic declination (MAG) at center of map. Diagram is approximate.

ADJOINING MAPS
1 Hilldale (7.5)
2 Coon Branch (7.5)
3 Ona
4 Tolland Center (7.5)
5 Sharon (7.5)
6 South Green (7.5)
7 North (7.5)

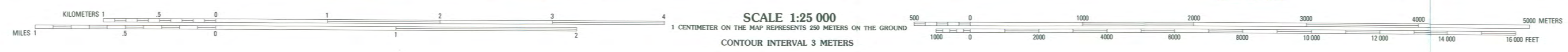
FOR SALE BY U.S. GEOLOGICAL SURVEY
DENVER, COLORADO 80225, OR RESTON, VIRGINIA 22092

TOPO-AFALL

Topographic Map Symbols

- Primary highway, hard surface
- Secondary highway, hard surface
- Light-duty road, hard or improved surface
- Unimproved road; trail
- Route marker: Interstate, U. S., State
- Railroad: standard gage, narrow gage
- Bridge; drawbridge
- Footbridge; overpass; underpass
- Build-up area: only selected landmark buildings shown
- House; barn; church; school; large structure
- Boundary:
 - National, with monument
 - State
 - County, parish
 - Civil township, precinct, district
 - Incorporated city, village, town
 - National or State reservation; small park
 - Land grant with monument; forest section open
 - U. S. public lands survey: range, township, section
 - Range, township; section line: location approximate
 - Fence or field line
 - Power transmission line, located tower
 - Dam; dam with lock
 - Cemetery; grave
 - Campground; picnic area; U. S. location monument
 - Windmill; water well; spring
 - Mini-shed; prospect; well or cave
 - Control: horizontal station; vertical station; spot elevation
 - Contours: index; intermediate; supplementary; depression
 - Disturbed surface: strip mine, lava, sand
 - Bathymetric contours: index; intermediate
 - Perennial lake and stream; intermittent lake and stream
 - Rapids, large and small; falls, large and small
 - Swamp; marsh
 - Submerged mark; land subject to controlled flooding
 - Woodland; scattered trees
 - Scrub; mangrove
 - Orchard; vineyard

A pamphlet describing topographic maps is available on request



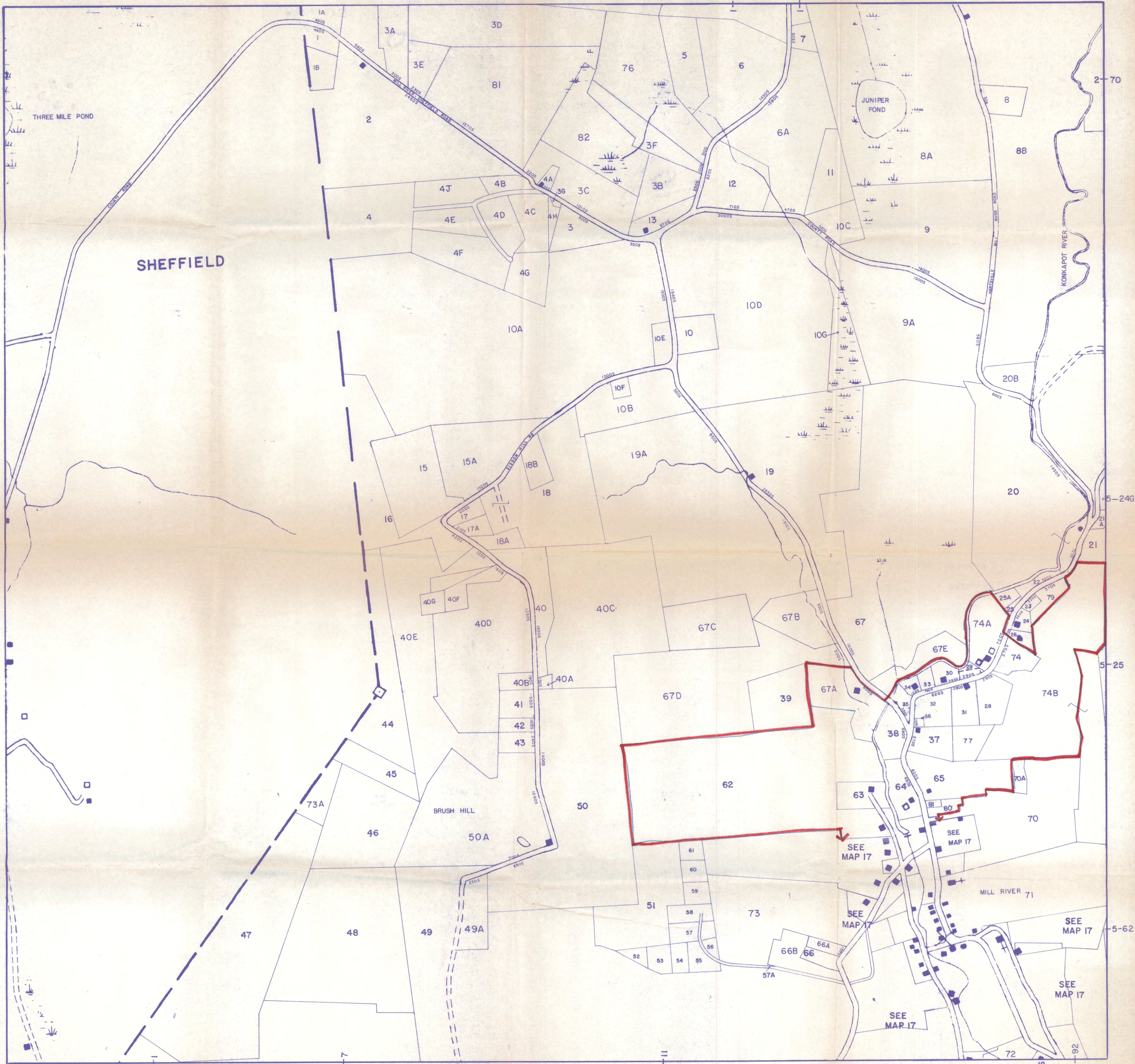
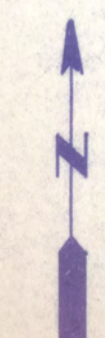


PHOTO COPIES
BY
COL-EAST, INC.
PITTSFIELD, MASS.



SCALE: 1" = 400'

TOWN OF NEW MARLBOROUGH, MASS.

ASSESSORS PLANS

1968

MILL RIVER HISTORIC DISTRICT
NEW MARLBOROUGH (BERKSHIRE CT.)
MASSACHUSETTS
MAP # 1 of 3

1	2	3
4	5	6
7	8	9
10	11	12

4

SOURCE: PHOTO COPIES OF U.S.G.S. QUADS



SEE MAP 4
80 ACS CLUB

MILL RIVER

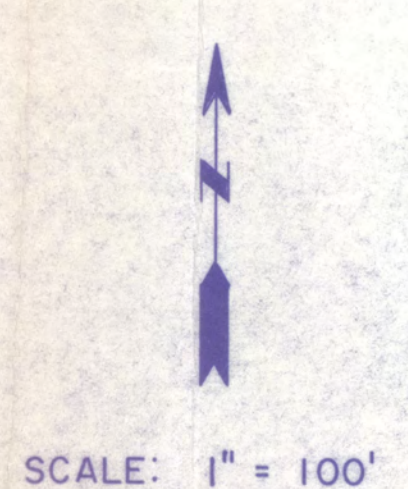
TOWN OF NEW MARLBOROUGH, MASS.

ASSESSORS PLANS

1968

MILL RIVER HISTORIC DISTRICT
NEW MARLBOROUGH (BERKSHIRE CTY.)
MASSACHUSETTS
MAP # 2 OF 3

PHOTO COPIES
BY
COL-EAST, INC.
PITTSFIELD, MASS.



SOURCE: PHOTO COPIES OF U.S.G.S. QUADS



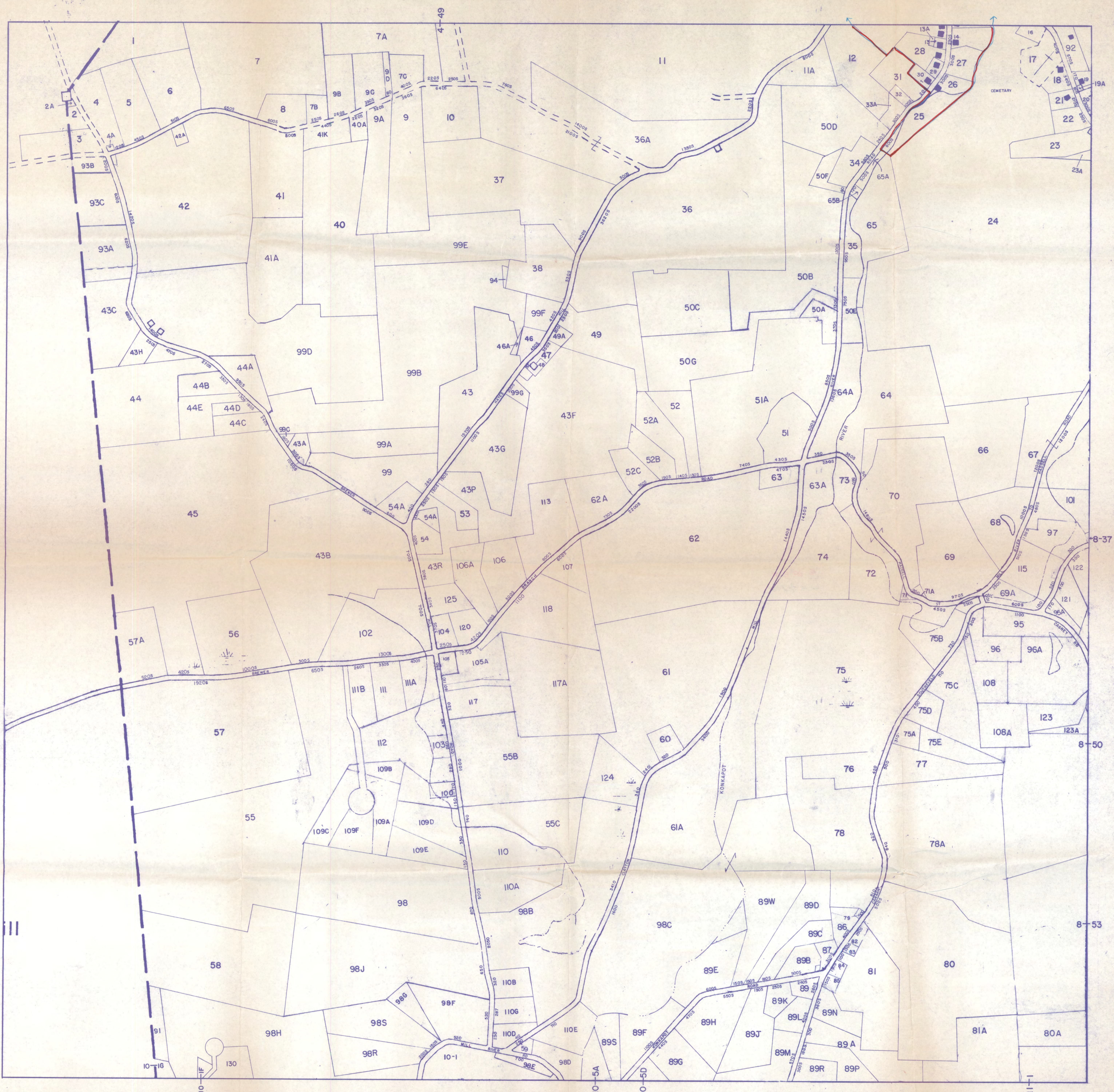
MILL RIVER

TOWN OF NEW MARLBOROUGH, MASS.

ASSESSORS PLANS

1988

17



TOWN OF NEW MARLBOROUGH, MASS.

ASSESSORS PLANS

1968

MILL RIVER WIDEG DISTRICT
 NEW MARLBOROUGH (BERKSHIRE CTY)
 MASSACHUSETTS
 MAP # 3 OF 3

1	2	3
4	5	6
7	8	9
10	11	12

7

PHOTO COPIES
 BY
 COL-EAST, INC.
 PITTSFIELD, MASS

SCALE: 1" = 400'

SOURCE: PHOTO COPIES OF U.S.G.S. QUADS



March 28, 1994



Carol Shull
National Register of Historic Places
Department of the Interior
National Park Service
P.O. Box 37127
Washington, DC 20013-7127

Dear Ms. Shull:

Enclosed please find the following nomination form:

Mill River Historic District, New Marlborough (Berkshire County),
Massachusetts, 01244.

The nomination has been voted eligible by the State Review Board and has been signed by the State Historic Preservation Officer. Owners were notified of pending State Review Board consideration 30-75 days before the meeting and were afforded the opportunity to comment. Of a total of 68 owners, the MHC has received 2 letters of objection.

Sincerely,

Betsy Friedberg
Betsy Friedberg
National Register Director
Massachusetts Historical Commission

enclosure

cc: Claudette Callahan, Chair., New Marlborough Hist. Comm.
David Lowman, Chairman, Board of Selectmen
Virginia Adams, The Public Archaeology Lab., Inc.
Debbie O'Brien, Librarian, Mill River Public Library

UNITED STATES DEPARTMENT OF THE INTERIOR
NATIONAL PARK SERVICE

NATIONAL REGISTER OF HISTORIC PLACES
EVALUATION/RETURN SHEET

REQUESTED ACTION: ADDITIONAL DOCUMENTATION

PROPERTY NAME: Mill River Historic District

MULTIPLE NAME:

STATE & COUNTY: MASSACHUSETTS, Berkshire

DATE RECEIVED: 3/08/05 DATE OF PENDING LIST:
DATE OF 16TH DAY: DATE OF 45TH DAY: 4/21/05
DATE OF WEEKLY LIST:

REFERENCE NUMBER: 94000423

NOMINATOR: STATE

REASONS FOR REVIEW:

APPEAL: N DATA PROBLEM: N LANDSCAPE: N LESS THAN 50 YEARS: N
OTHER: N PDIL: N PERIOD: N PROGRAM UNAPPROVED: N
REQUEST: N SAMPLE: N SLR DRAFT: N NATIONAL: N

COMMENT WAIVER: N

ACCEPT RETURN REJECT _____ DATE

ABSTRACT/SUMMARY COMMENTS:

Additional Documentation Accepted

RECOM./CRITERIA accept

REVIEWER Edson Beall

DISCIPLINE Historian

TELEPHONE _____

DATE 3/22/05

DOCUMENTATION see attached comments Y/N see attached SLR Y/N

If a nomination is returned to the nominating authority, the nomination is no longer under consideration by the NPS.



The Commonwealth of Massachusetts
William Francis Galvin, Secretary of the Commonwealth
Massachusetts Historical Commission

March 2, 2005

Ms. Carol Shull
National Register of Historic Places
Department of the Interior
National Park Service
1201 Eye Street, NW 8th floor
Washington, DC 20005

MAR - 8

Dear Ms. Shull:

I am writing with the following technical correction to the National Register nomination for the **Mill River Historic District, New Marlborough (Berkshire County), Massachusetts** (NR 5/17/1994). The nomination notes the presence of two bridges over the Konkapot River within the district boundaries and terms both of them noncontributing because of construction dates postdating the period of significance (1742-ca. 1942). However, additional research has shown that the district includes three, not two, bridges over the Konkapot River, and that two of the three fall within the period of significance. Please revise the district data sheet as follows:

Resource: 1 Bridge

Location: Over the Konkapot River at Mill River Rd./Great Barrington Rd.

Date of construction: 1936

Resource status: 1 C

Bridge type: Steel stringer

Resource type: Structure

Resource: 1 Bridge

Location: Over the Konkapot River at Hayes Hill Road

Date of construction: 1938

Resource status: C

Bridge type: Steel stringer

Resource type: Structure

Resource: 1 Bridge

Location: Over the Konkapot River at Mill River Rd.

Date of construction: 1966

Resource status: 1 NC

Bridge type: Concrete slab

Resource type: Structure

220 Morrissey Boulevard, Boston, Massachusetts 02125

(617) 727-8470 • Fax: (617) 727-5128

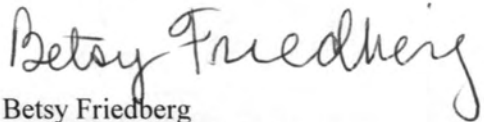
www.state.ma.us/sec/mhc

The resource count for the district should also be revised, as follows:

Contributing	Noncontributing	
92	16	Buildings
11		Sites
2	1	Structures
		Objects
105	17	Total

Thank you. If you have any questions regarding this request, please do not hesitate to contact me.

Sincerely,



Betsy Friedberg
National Register Director
Massachusetts Historical Commission