

United States Department of the Interior National Park Service

National Register of Historic Places Registration Form

JAN 17 1989

NATIONAL REGISTER

This form is for use in nominating or requesting determinations of eligibility for individual properties or districts. See instructions in Guidelines for Completing National Register Forms (National Register Bulletin 16). Complete each item by marking "x" in the appropriate box or by entering the requested information. If an item does not apply to the property being documented, enter "N/A" for "not applicable." For functions, styles, materials, and areas of significance, enter only the categories and subcategories listed in the instructions. For additional space use continuation sheets (Form 10-900a). Type all entries.

1. Name of Property

historic name Engine Company 16 Fire Station other names/site number

2. Location

street & number 636 Blue Hills Avenue not for publication N/A city, town Hartford vicinity N/A state Connecticut code CT county Hartford code 003 zip code 06112

3. Classification

Table with 3 columns: Ownership of Property, Category of Property, and Number of Resources within Property. Includes checkboxes for private, public-local, public-State, public-Federal, building(s), district, site, structure, object, and resource counts.

Name of related multiple property listing: Firehouses of Hartford, Connecticut

Number of contributing resources previously listed in the National Register 0

4. State/Federal Agency Certification

As the designated authority under the National Historic Preservation Act of 1966, as amended, I hereby certify that this nomination request for determination of eligibility meets the documentation standards for registering properties in the National Register of Historic Places and meets the procedural and professional requirements set forth in 36 CFR Part 60. In my opinion, the property meets does not meet the National Register criteria. See continuation sheet.

Signature of certifying official: Director, Connecticut Historical Commission State or Federal agency and bureau

Date: January 10, 1989

In my opinion, the property meets does not meet the National Register criteria. See continuation sheet.

Signature of commenting or other official State or Federal agency and bureau

Date

5. National Park Service Certification

I, hereby, certify that this property is:

- entered in the National Register. See continuation sheet. determined eligible for the National Register. See continuation sheet. determined not eligible for the National Register. removed from the National Register. other, (explain:)

Signature of the Keeper: Nelson Byrum

Date of Action: 3/2/89

6. Function or Use

Historic Functions (enter categories from instructions)

GOVERNMENT/fire station

Current Functions (enter categories from instructions)

GOVERNMENT/fire station

7. Description

Architectural Classification
(enter categories from instructions)

Tudor Revival

Materials (enter categories from instructions)

foundation concrete

walls brick

roof slate

other sandstone

Describe present and historic physical appearance.

The firehouse of Engine Company 16, built in 1927, is located near Hartford's northern boundary approximately three miles from the downtown. Despite its commercial-area location, the building's Tudor Revival design gives it a residential quality (Photograph 1).

The foundation of the building is concrete, the walls above are brick. Steel frame construction provides the building's structural support.

The facade of the building is its most distinctive feature (Photograph 2). Faced in a combination of multi-colored stone and brick, the facade is arranged horizontally, with two entrance bays flanked by two doors and two small, one-story projecting wings. Above is a half-timbered second floor with two wall dormers and bricks arranged in a basketweave pattern. Windows throughout the building generally are nine-over-nine double hung sash. The hipped roof is composed of multi-colored slate and slopes down on either side of the facade to enclosed the two side wings.

A round crenelated hose tower composed of multi-colored stone stands on the north side of the building. The land at the rear of the building slopes downward, providing three full stories at the rear.

The right wing of the building serves as the watchroom, while the left provides access to the stairway. The interior is very simple in design. The apparatus room walls are lined in white tile. Above the apparatus room on the second floor is the dormitory, which is unadorned but for two brass sliding poles with guard rails (Photograph 3).

The firehouse has been little altered since its construction (Photograph 4). The only noticeable change has been the installation of metal overhead doors in the entrance bays.

8. Statement of Significance

Certifying official has considered the significance of this property in relation to other properties:

nationally statewide locally

Applicable National Register Criteria A B C D

Criteria Considerations (Exceptions) A B C D E F G N/A

Areas of Significance (enter categories from instructions)
Architecture
Community Planning and Development

Period of Significance
1927-1938

Significant Dates
1927

Cultural Affiliation
N/A

Significant Person
N/A

Architect/Builder
Ebbets and Frid

State significance of property, and justify criteria, criteria considerations, and areas and periods of significance noted above.

636 Blue Hills Avenue was the first firehouse built for Engine Company 16, organized in 1928. The exterior of the building is remarkably rich in texture and detail, making it one of the most architecturally distinctive firehouses in Hartford. The interior is very simple, characteristic of firehouses of its period, but, like the exterior, displays a high level of integrity.

The station for Company No. 16 was designed by Hartford architects Ebbets and Frid, and is an excellent example of their work in the Tudor Revival style and of their application of the style to the design of a firehouse. At the time the station was built, north Blue Hills Avenue was less populated and more residential in character than now. The unique design of the station helped it to blend effectively with the neighborhood.

The firehouse retains integrity of design, materials, setting, and association and meets the requirements for registration as outlined in the multiple property submission, "Firehouses of Hartford." It retains its original massing, layout, fenestration, and decorative elements, as well as the features characteristic of a firehouse: large entrance bays, apparatus room, watchroom, sleeping quarters, hose tower, and sliding poles. A basis on which to evaluate its significance is contained within the associated historic context, "Fire Service in Hartford, 1789-1939."

9. Major Bibliographical References

See multiple property form.

Previous documentation on file (NPS): N/A

preliminary determination of individual listing (36 CFR 67) has been requested

previously listed in the National Register

previously determined eligible by the National Register

designated a National Historic Landmark

recorded by Historic American Buildings
Survey # _____

recorded by Historic American Engineering
Record # _____

See continuation sheet

Primary location of additional data:

State historic preservation office

Other State agency

Federal agency

Local government

University

Other

Specify repository: _____

10. Geographical Data

Acreeage of property approximately .41 acre

UTM References

A 18 691440 4630380
Zone Easting Northing

C _____

B _____
Zone Easting Northing

D _____

See continuation sheet

Verbal Boundary Description

The nominated property occupies the City of Hartford Parcel Number 522-008-011.

See continuation sheet

Boundary Justification

The boundary of the property surrounds the building and immediate setting historically associated with the firehouse.

See continuation sheet

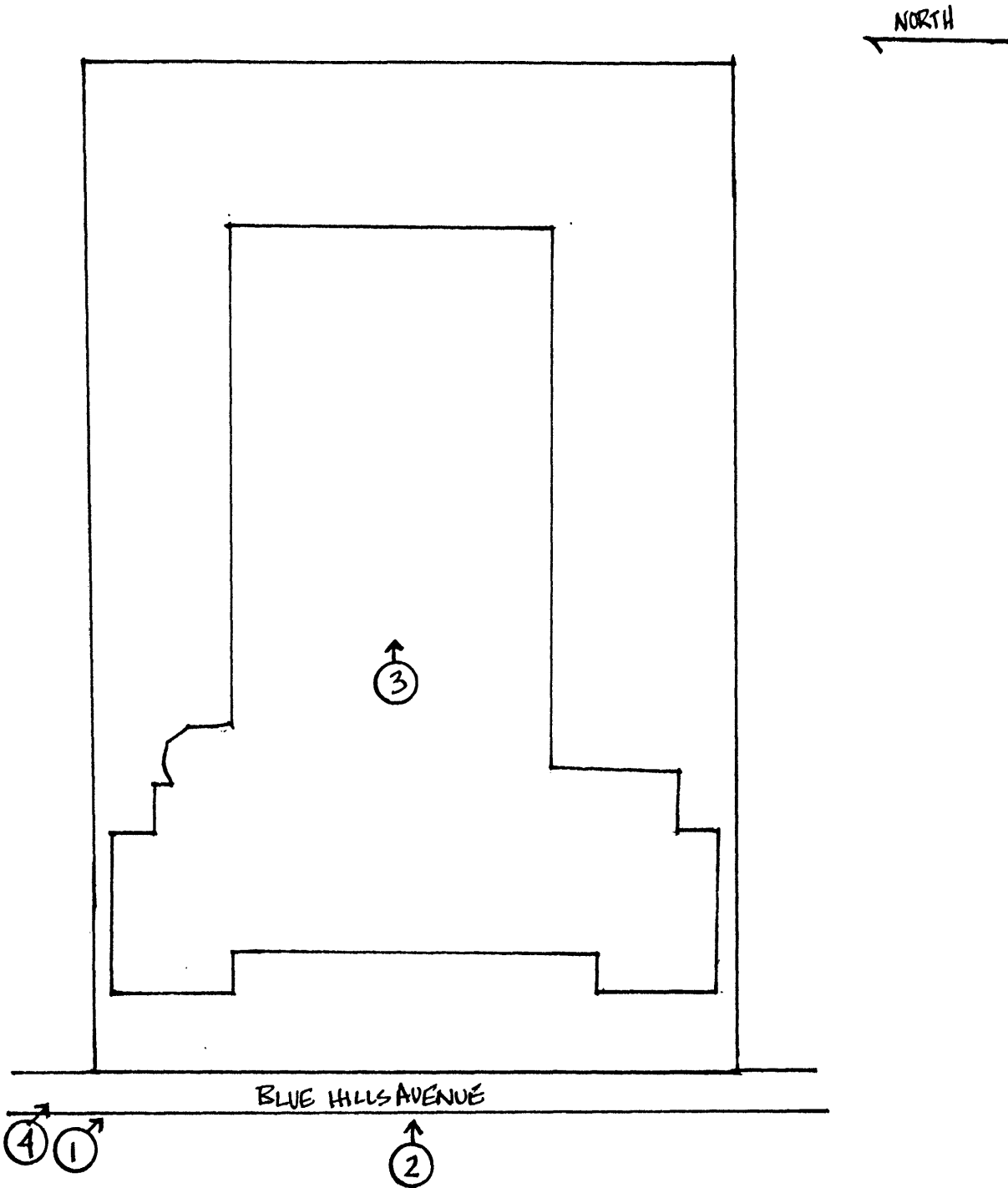
11. Form Prepared By Reviewed by John Herzan, National Register Coordinator

name/title Janice L. Elliott and David Ransom/Consultants

organization Connecticut Historical Commission date May 22, 1988

street & number 56 S. Prospect St. telephone (203)566-3005

city or town Hartford state CT zip code 06106



Sketch Map

Engine Company 16 Fire Station
636 Blue Hills Avenue
Hartford, Connecticut

Not to Scale

Photo Key: ○→

United States Department of the Interior
National Park Service

National Register of Historic Places
Continuation Sheet

636 Blue Hills Avenue
Hartford, Connecticut

Section number Photos Page 1

Photographs

All photographs were taken by Janice L. Elliott in April, 1988, unless otherwise noted. Negatives are on file with the Connecticut Historical Commission. Any photographs marked with an asterisk (*) may be reproduced only with permission of the Connecticut Historical Society, 1 Elizabeth Street, Hartford, Connecticut. Negatives for those photographs are on file with the Connecticut Historical Society.

<u>Number</u>	<u>Description</u>	<u>View</u>	<u>Comment</u>
1	636 Blue Hills Avenue West and north elevations	Southeast	
2	636 Blue Hills Avenue Facade.	East	
3	636 Blue Hills Avenue Second-floor dormitory.	East	
4	636 Blue Hills Avenue As it appeared in 1928.	Southeast	*CHS Photo